

Path: Z:\Clients\ENV\CERT_ClientInfo\Sites\Database\Geospatial\Maps_Photos_Dwgs\ArcGIS\BMD\Files\Arcdocs\2015\Decommissioning Plan\Fig2-9_GW Elevations in Western Upland Area_Sandstone A.mxd
COPYRIGHT © 2015 BURNS & MCDONNELL ENGINEERING COMPANY, INC.

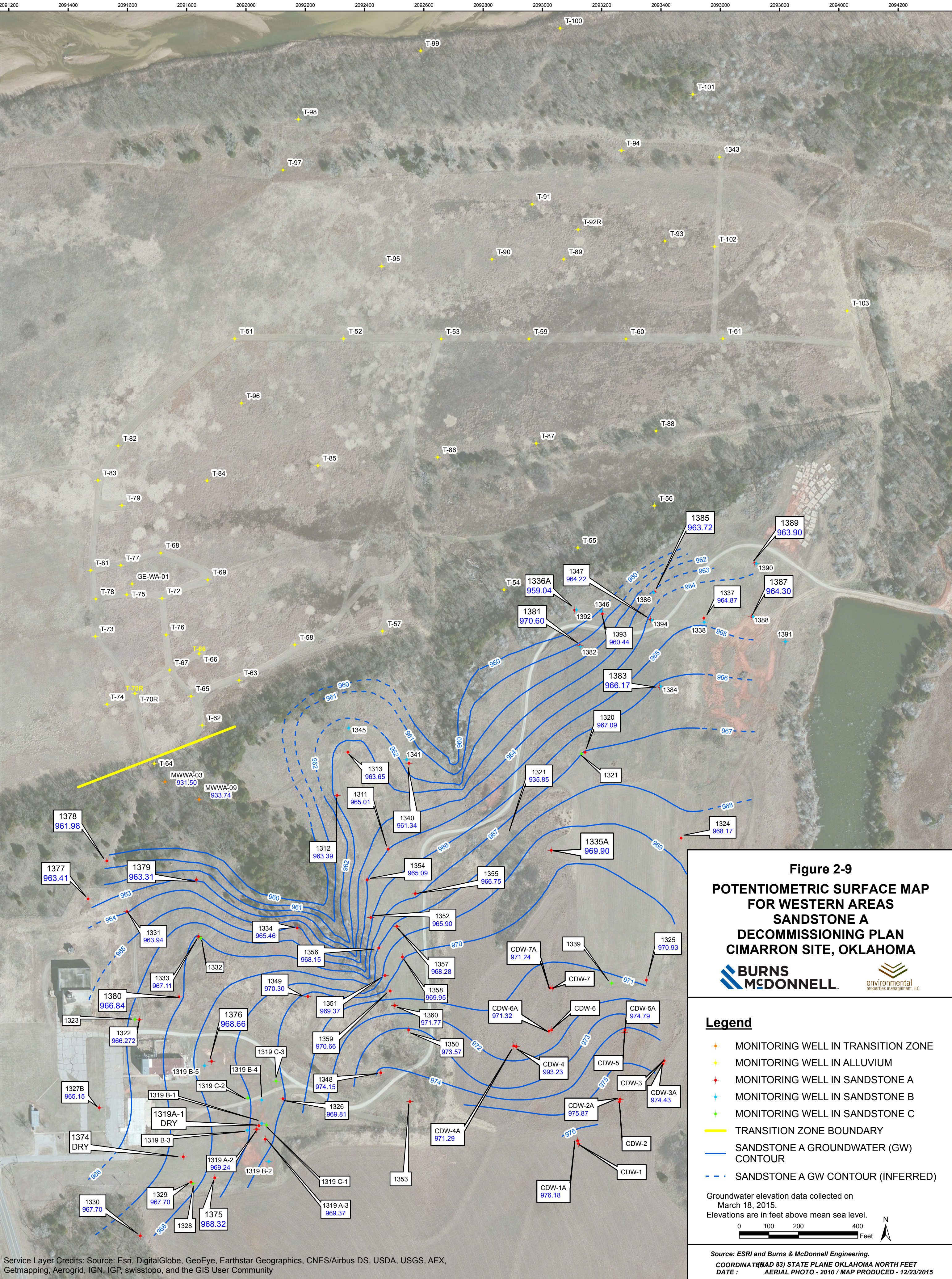


Figure 2-9
POTENTIOMETRIC SURFACE MAP
FOR WESTERN AREAS
SANDSTONE A
DECOMMISSIONING PLAN
CIMARRON SITE, OKLAHOMA



Legend

- MONITORING WELL IN TRANSITION ZONE
- MONITORING WELL IN ALLUVIUM
- MONITORING WELL IN SANDSTONE A
- MONITORING WELL IN SANDSTONE B
- MONITORING WELL IN SANDSTONE C
- TRANSITION ZONE BOUNDARY
- SANDSTONE A GROUNDWATER (GW) CONTOUR
- SANDSTONE A GW CONTOUR (INFERRED)

Groundwater elevation data collected on
March 18, 2015.
Elevations are in feet above mean sea level.



Source: ESRI and Burns & McDonnell Engineering.
COORDINATE: NAD 83) STATE PLANE OKLAHOMA NORTH FEET
DATE : AERIAL PHOTO - 2010 / MAP PRODUCED - 12/23/2015

Service Layer Credits: Source: Esri, DigitalGlobe, GeoEye, Earthstar Geographics, CNES/Airbus DS, USDA, USGS, AEX, Getmapping, Aerogrid, IGN, IGP, swisstopo, and the GIS User Community