

Path: Z:\Clients\ENV\CERT_ClientInfo\Sites\Database\Geospatial\Maps_Photos_Dwgs\ArcGIS\BMD\CD_Files\Arcdocs\2015\Decommissioning Plan\Fig2-10 Potentiometric Surface Map for Western Areas_Sandstone_B_Alluvium.mxd
COPYRIGHT © 2015 BURNS & MCDONNELL ENGINEERING COMPANY, INC.

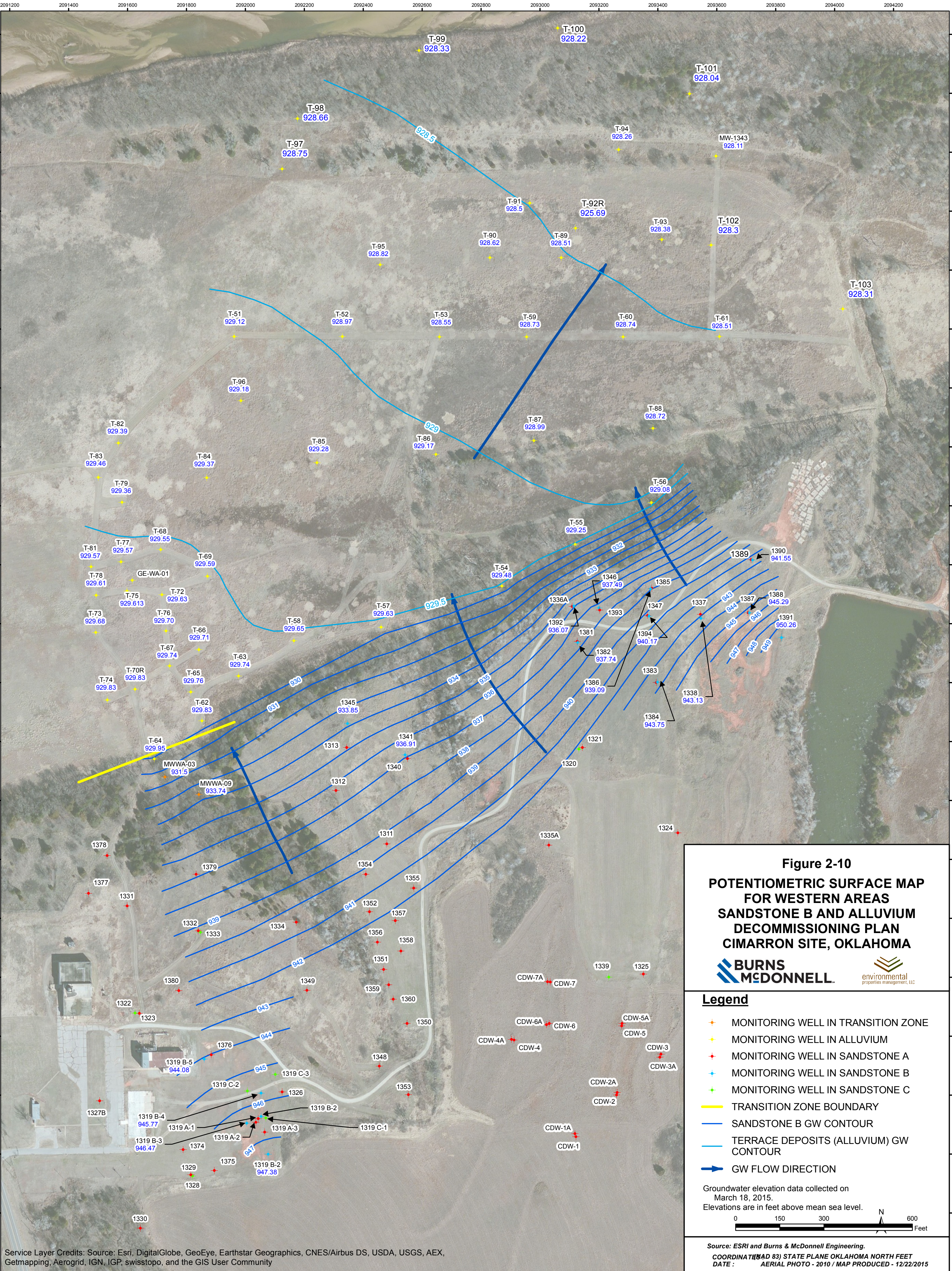




Figure 2-10


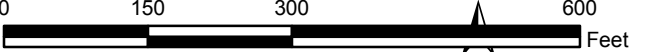
**POTENTIOMETRIC SURFACE MAP
FOR WESTERN AREAS
SANDSTONE B AND ALLUVIUM
DECOMMISSIONING PLAN
CIMARRON SITE, OKLAHOMA**



Legend

- MONITORING WELL IN TRANSITION ZONE
- MONITORING WELL IN ALLUVIUM
- MONITORING WELL IN SANDSTONE A
- MONITORING WELL IN SANDSTONE B
- MONITORING WELL IN SANDSTONE C
- TRANSITION ZONE BOUNDARY
- SANDSTONE B GW CONTOUR
- TERRACE DEPOSITS (ALLUVIUM) GW CONTOUR
- GW FLOW DIRECTION

Groundwater elevation data collected on
March 18, 2015.
Elevations are in feet above mean sea level.



0 150 300 600 Feet

Source: ESRI and Burns & McDonnell Engineering.
COORDINATE SYSTEM: NAD 83) STATE PLANE OKLAHOMA NORTH FEET
DATE : AERIAL PHOTO - 2010 / MAP PRODUCED - 12/22/2015

Service Layer Credits: Source: Esri, DigitalGlobe, GeoEye, Earthstar Geographics, CNES/Airbus DS, USDA, USGS, AEX, Getmapping, Aerogrid, IGN, IGP, swisstopo, and the GIS User Community