

**AEC DISTRIBUTION FOR PART 50 DOCKET MATERIAL  
(TEMPORARY FORM)**

CONTROL NO: 9155

FILE: \_\_\_\_\_

FROM: Duke Power Company Charlotte, N. C. 28201 A. C. Thies			DATE OF DOC  12-19-73	DATE REC'D  12-27-73	LTR  X	MEMO	RPT	OTHER
TO: Mr. Giambusso			ORIG  3 signed	CC  	OTHER  	SENT AEC PDR X SENT LOCAL PDR X		
CLASS	UNCLASS  XXXX	PROP INFO	INPUT  XXXX	NO CYS REC'D  40		DOCKET NO:  50-269/270		
DESCRIPTION: Ltr notarized 12-19-73, requesting that Sec 6.1.1 of the Oconee Tech Spec Appendix A be modified..... W/Attachment 1, 2 & 3.				ENCLOSURES:  <div style="text-align: center; font-size: 1.2em; font-weight: bold;">Do Not Remove ACKNOWLEDGED</div>				
PLANT NAME: Oconee Units 1 & 2								

FOR ACTION/INFORMATION

1-2-74

AB

BUTLER(L) W/ Copies	✓ SCHWENCER(L) W/ 6 Copies	ZIEMANN(L) W/ Copies	REGAN(E) W/ Copies
CLARK(L) W/ Copies	STOLZ(L) W/ Copies	DICKER(E) W/ Copies	W/ Copies
GOLLER(L) W/ Copies	VASSALLO(L) W/ Copies	KNIGHTON(E) W/ Copies	W/ Copies
KNIEL(L) W/ Copies	SCHEMEL(L) W/ Copies	YOUNGBLOOD(E) W/ Copies	W/ Copies

INTERNAL DISTRIBUTION

<u>REG FILE (2)</u> ✓ AEC PDR (2) ✓ OGC, ROOM P-506A ✓ MUNTZING/STAFF CASE GIAMBUSSO BOYD MOORE (L)(BWR) ✓ DEYOUNG(L)(FWR) SKOVHOLT (L) P. COLLINS  <u>REG OPR</u> ✓ FILE & REGION(2) MORRIS STEELE	<u>TECH REVIEW</u> HENDRIE SCHROEDER MACCARY KNIGHT PAWLICKI SHAO STELLO HOUSTON NOVAK ROSS IPPOLITO TEDESCO LONG LAINAS BENAROYA VOLLMER	DENTON GRIMES GAMMILL KASTNER BALLARD SPANGLER  <u>ENVIRO</u> MULLER DICKER KNIGHTON YOUNGBLOOD REGAN PROJECT LDR  HARLESS	<u>LIC ASST</u> DIGGS (L) GEARIN (L) ✓ GOULBOURNE (L) LEE (L) MAIGRET (L) SERVICE (L) SHEPPARD (E) SMITH (L) TEETS (L) WADE (E) WILLIAMS (E) WILSON (L) DURHAM (E)	<u>A/T IND</u> BRAITMAN SALTZMAN B. HURT  <u>PLANS</u> MCDONALD ✓ DUBE w/Input  <u>INFO</u> C. MILES B. KING ✓ ALLEN CABELL
--	---	---	---	---

EXTERNAL DISTRIBUTION

✓ 1 - LOCAL PDR Walhalla, S. C. ✓ 1 - DTIE(ABERNATHY) ✓ 1 - NSIC(BUCHANAN) 1 - ASLB(YORE/SAYRE/ WOODARD/"H" ST. ✓ 16 - CYS ACRS HOLDING SENT TO LIC ASST. E. GOULBOURNE ON 1-2-74	(1)(2)(10)-NATIONAL LAB'S 1-ASLBP(E/W Bldg, Rm 529) 1-W. PENNINGTON, Rm E-201 GT 1-CONSULTANT'S NEWMARK/BLUME/AGBABIAN 1-GERALD ULRIKSON...ORNL	1-PDR-SAN/LA/NY 1-GERALD LELLOUCHE BROOKHAVEN NAT. LAB 1-AGMED(Ruth Gussman) RM-B-127, GT. 1-RD..MULLER..F-309 GT
---	--	--

## DUKE POWER COMPANY

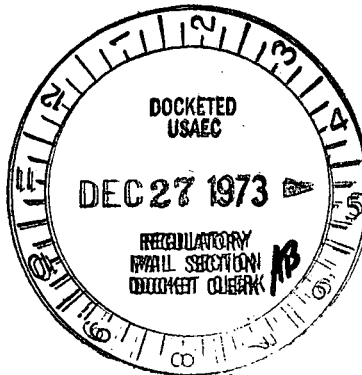
POWER BUILDING

422 SOUTH CHURCH STREET, CHARLOTTE, N. C. 28201

A. C. THIES  
SENIOR VICE PRESIDENT  
PRODUCTION AND TRANSMISSION

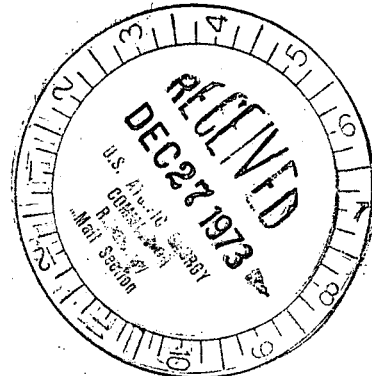
P. O. Box 2178

December 19, 1973



Mr. Angelo Giambusso  
Deputy Director for Reactor Projects  
Directorate of Licensing  
Office of Regulation  
U. S. Atomic Energy Commission  
Washington, D. C. 20545

Re: Oconee Nuclear Station  
Units 1 & 2  
Docket Nos. 50-269 and 270



Dear Mr. Giambusso:

Section 6.1.1 of the Oconee Nuclear Station Technical Specifications, Appendix A to Facility Operating Licenses DPR-38 and DPR-47, states that the station organization shall be as shown in Figure 6.1.1. It is requested that this figure be modified to include a Maintenance Engineer who will report to the Station Superintendent. The Maintenance Supervisor will report to the Maintenance Engineer. Either the Maintenance Engineer or the Maintenance Supervisor will meet the minimum requirements for training and experience specified in Section 12.2 of the Oconee FSAR. As shown in Attachment 1, this section of the FSAR will be revised to explicitly state that either the Maintenance Engineer or the Maintenance Supervisor shall meet the training and experience described in Section 4 of ANSI 18.1, "Selection and Training of Nuclear Power Plant Personnel." Revised page 6.1-7 of the Technical Specification is enclosed as Attachment 2.

Section 6.1.2.1(a) of the Oconee Technical Specifications describes membership of the Station Review Committee. The present technical specification requires that the Assistant Superintendent, the Operating Engineer and the Technical Support Engineer be members of this committee. It is requested that this specification be modified as shown in Attachment 3. The technical expertise of this committee will not be diminished by this revision to the technical specification, but additional flexibility would be gained. The technical expertise of the committee would be appropriate to the items being considered by the committee.

Mr. Angelo Giambusso  
Page 2  
December 19, 1973

Yours very truly,



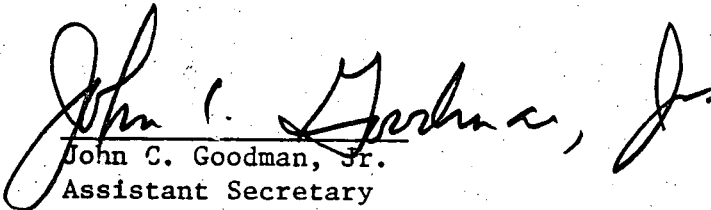
A. C. Thies

ACT/jg  
Attachments


A. C. THIES, being duly sworn, states that he is Senior Vice President of Duke Power Company; that he is authorized on the part of said Company to sign and file with the Atomic Energy Commission this request for revision to the Oconee Nuclear Station Technical Specifications Appendix A to Facility Operating Licenses DPR-38 and DPR-47; and that all statements and matters set forth therein are true and correct to the best of his knowledge.



A. C. Thies, Senior Vice President

  
John C. Goodman, Jr.  
Assistant Secretary

Subscribed and sworn to me before this 19th day of December, 1973.

  
Notary Public

My Commission Expires:

October 24, 1977

# ATTACHMENT 1

<u>Position</u>	<u>Minimum Requirement for Position</u>
Assistant Operating Engineer (Cont'd)	<ol style="list-style-type: none"> <li>2. Minimum of 3 years plant experience including at least 2 years nuclear experience</li> <li>3. Same as Operating Engineer</li> </ol>
Technical Support Engineer	<ol style="list-style-type: none"> <li>1. Graduate in Engineering or a related physical science or equivalent in experience.</li> <li>2. Minimum of 3 years nuclear experience</li> </ol>
Performance Engineer	<ol style="list-style-type: none"> <li>1. Graduate in Engineering, a related science or equivalent experience and training. (If the Technical Support Engineer is not a graduate in Engineering or related physical science, then the Performance Engineer shall be.)</li> <li>2. Minimum of 2 years nuclear experience</li> </ol>
30.   Instrument & Control Engineer	<ol style="list-style-type: none"> <li>1. Graduate in Engineering or a related physical science or equivalent in experience</li> <li>2. Minimum of 1 years experience with power plant instrumentation and controls, 1/2 year of which is with nuclear instrumentation and controls</li> </ol>
Chemist	<ol style="list-style-type: none"> <li>1. Graduate chemist or Chemical Engineer or equivalent experience</li> <li>2. Minimum of 1 year experience in radiochemistry.</li> </ol>
Health Physics Supervisor	<ol style="list-style-type: none"> <li>1. High school graduate with 2 years technical training in Health Physics</li> <li>2. 3 years experience in Health Physics</li> </ol>
Maintenance Engineer or Maintenance Supervisor	<ol style="list-style-type: none"> <li>1. High school graduate with 2 years technical school or equivalent training or experience. (1 years experience for 1 year technical school)</li> <li>2. Minimum 4 years experience in plant maintenance</li> </ol>

## ATTACHMENT 1

### 12.1.2.7 Technical Support Engineer

30. | The technical support group at Oconee is headed by a Technical Support Engineer. He reports directly to the Superintendent and has reporting to him the Performance Engineer, the Instrument and Control Engineer, the Chemist and the Health Physics Supervisor.

It is anticipated that the Technical Support Engineer and the Performance Engineer will obtain an AEC Senior Reactor Operator License.

### 12.1.2.8 Performance Engineer

The Performance Engineer directs data gathering and evaluation in the areas of equipment and plant performance. Specifically included in this are core physics and core performance, from both nuclear and thermal-hydraulic considerations. He will assist in setting up fuel shuffling patterns and will participate in other phases of fuel management.

### 30. | 12.1.2.9 Instrument and Control Engineer

30. | The Instrument and Control Engineer has responsibility for preventive maintenance and repair of all instrumentation and controls at Oconee with the exception of certain electrical instrumentation applying only to the generators and switching station, which are maintained on a system basis by other departments (12.1.1) He will also supervise computer maintenance.

### 12.1.2.10 Health Physics Supervisor

The Health Physics Supervisor has the responsibility for conducting the Health Physics Program for Oconee. His duties include training of personnel in use of equipment, control of radiation exposure of all personnel, continuous determination of the radiological status of the plant, surveillance of all radioactive waste disposal operations, conducting the Environmental Monitoring Program, and maintaining all required records. He has direct access to the Superintendent in matters concerning any phase of radiological protection. This position may be combined with the Chemist in the future when an individual, fully qualified in both fields, is available.

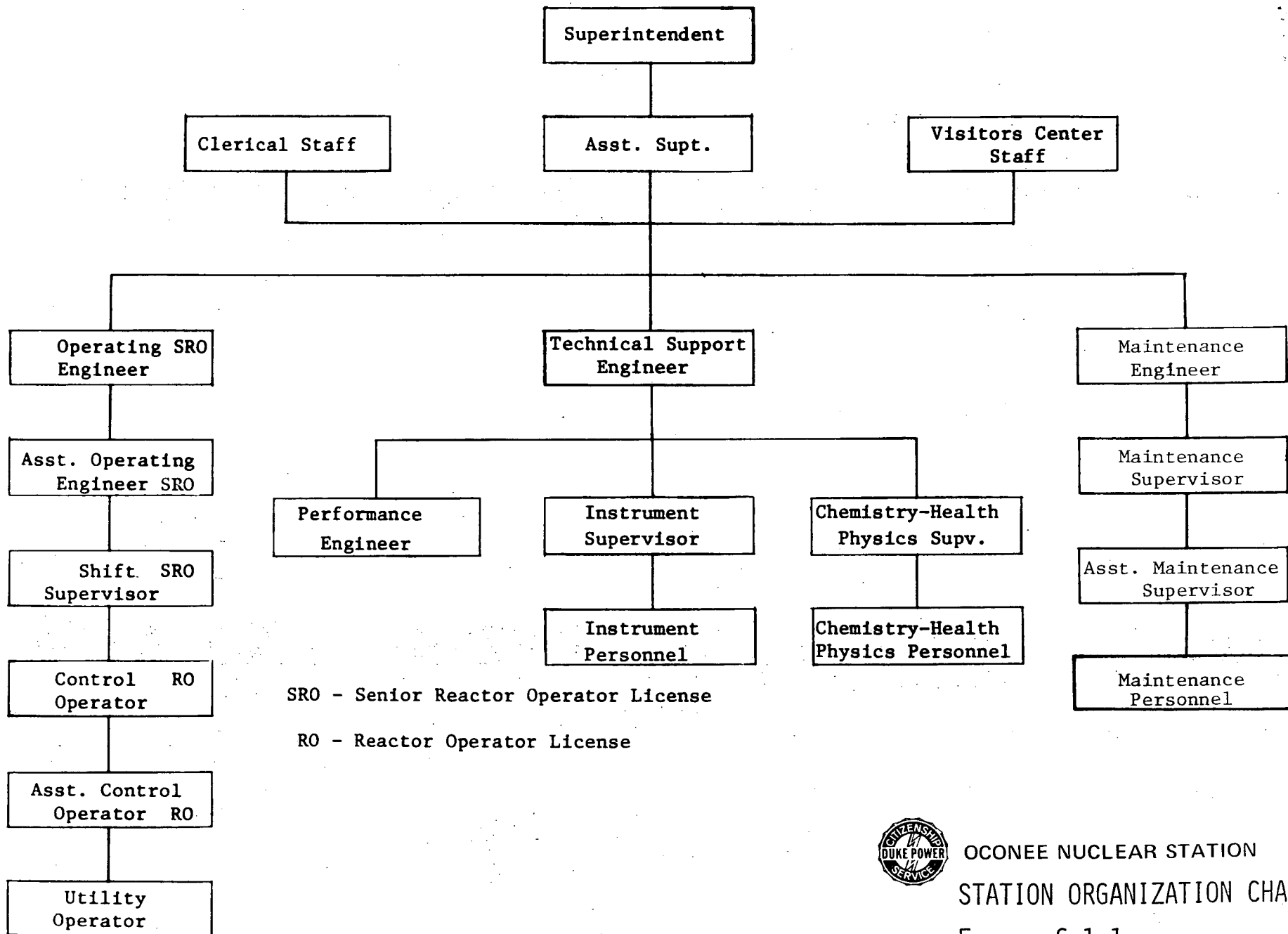
### 12.1.2.11 Chemist

The Chemist is responsible for overall chemistry and radiochemistry requirements, with special emphasis on primary and secondary system water chemistry. At some future date, a fully qualified individual may serve as both Chemist and Health Physics Supervisor.

### 12.1.2.12 Maintenance Engineer

The Maintenance Engineer reports to the Superintendent and is responsible for organizing and conducting preventive maintenance and repairs of mechanical and non-instrument related electrical equipment. Operation related maintenance activities are coordinated with the Operating Engineer.

6.1-7



ATTACHMENT 2



OCONEE NUCLEAR STATION  
STATION ORGANIZATION CHART  
FIGURE 6.1-1

### ATTACHMENT 3

- b. At least one licensed Reactor Operator per unit and two Senior Reactor Operators shall be at the station at all times when there is fuel in two reactor vessels. One licensed operator per unit shall be in the control room for that unit. At no time will the shift crew be less than three persons per unit.
- c. Two licensed reactor operators shall be in the control room during startup and scheduled shutdown of the reactor, and during recovery from reactor trips.
- d. At least one licensed reactor operator shall be in the reactor building when fuel handling operations are in progress in the reactor building. An operator holding a Senior Reactor Operators license and assigned no other concurrent operational duties shall be in direct charge of refueling operations.
- e. At least one operator per shift for each unit will have sufficient training to perform routine health physics requirements.
- f. If the computer for a reactor is inoperable for more than eight (8) hours, an additional operator shall be called in to supplement the shift crew.

#### 6.1.2 Review and Audit

In matters of nuclear safety and radiation exposure, review and audit of station operation, maintenance and technical matters shall be provided by two committees as follows (Reference Figure 6.1.2):

##### 6.1.2.1 Station Review Committee

###### a. Membership

The Superintendent shall appoint an on-site review committee consisting of at least five members of the station supervisory staff. Representation shall be provided from Operations and from Technical Support. Membership shall include expertise appropriate to the items being considered by the committee.

The chairman of the on-site review committee shall be appointed by the Superintendent.

###### b. Meeting Frequency

This committee shall meet at least once each month and as required on call by the chairman.

###### c. Quorum

The chairman plus two members shall constitute a quorum.

###### d. Responsibilities

The committee shall have the following responsibilities:

- (1) Review all new procedures or proposed significant, safety-related changes to existing procedures as determined by the Station Superintendent.