

UNIVERSITY *of* MISSOURI

ENVIRONMENTAL HEALTH AND SAFETY

December 18, 2015

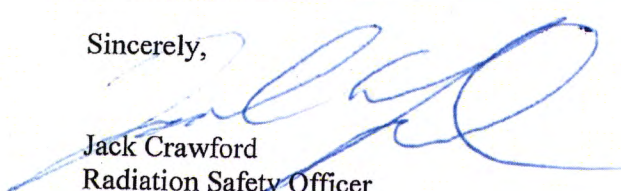
Mr. Mike LaFranzo
Senior Health Physicist
Materials Control, ISFSI and Decommissioning Branch
Region III - Division of Nuclear Materials and Safety
U.S. Nuclear Regulatory Commission
2443 Warrenville Road
Lisle, Illinois 60532

SUBJECT: SUBMISSION OF ADDITIONAL DOCUMENTS IN SUPPORT OF
RELEASING PORTIONS OF SINCLAIR RESEARCH FARM PROPERTIES AT MU

The purpose of this letter is to submit the attached additional documentation (maps/drawings) in support of the of MU's request to release portions of Sinclair Research Farm properties (Tract 3, Tract 4, and Tract 6), and to identify, by the use of Northing and Easting coordinates along with their equivalent GPS (degrees, minute, and seconds) coordinates the site that MU will be retaining and therefore should not to be considered as part of this release request.

If you have any questions or concerns please contact me at (573) 882-0931 or crawfordw@missouri.edu.

Sincerely,



Jack Crawford
Radiation Safety Officer

References:
ML15106A519
ML15106A613
ML15106A647
ML15106A666
ML15106A393



Docket No. 030-02278
License No. 24-00513-32

cc: T. Houts (MU EHS Director)
S. Jurisson (MU Profession of Chemistry and Chair of RSC)
G. Ward (MU Vice Chancellor of Operations)
RSO File

Sinclair Research Farm areas requested to be free released as part of
"University of Missouri-Columbia Sinclair Farm Phase 4
Final Status Report Revision 0"

May 23, 2014
(ML15106A666)

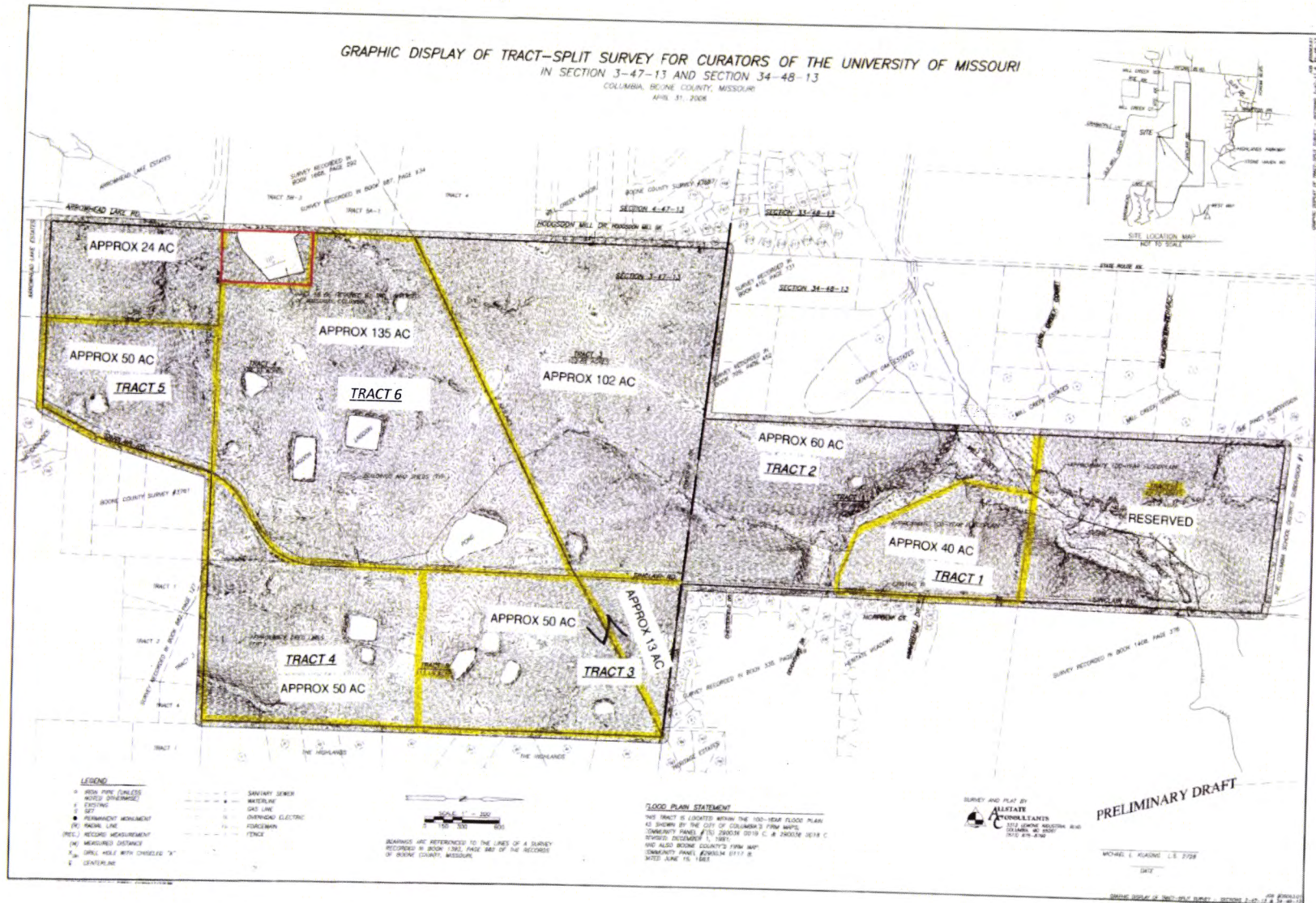
These maps/drawings have several Tracts/areas listed. While MU owns all these Tracts we are only asking the NRC to free release those areas that were impacted by historical Radioactive Material (RAM) use at the site. Specifically those areas impacted by historical RAM use are in Tract 3, Tract 4, and Tract 6.

These maps/drawings also show the area of SRF that MU plans to retain which is boxed in red. We have provided both Missouri's State Planes Northing and Easting along with GPS (degrees, minutes, seconds) coordinates for this area as we want to retain it from the request for releasing the other Tracts on the SRF property.

Note: Sinclair Farm buildings shown on this photo have been demolished.



GRAPHIC DISPLAY OF TRACT-SPLIT SURVEY FOR CURATORS OF THE UNIVERSITY OF MISSOURI
IN SECTION 3-47-13 AND SECTION 34-48-13
COLUMBIA, BOONE COUNTY, MISSOURI
APRIL 31, 2008



GRAPHIC DISPLAY OF TRACT-SPLIT SURVEY FOR CURATORS OF THE UNIVERSITY OF MISSOURI
IN SECTION 3-47-13 AND SECTION 34-48-13
COLUMBIA, BOONE COUNTY, MISSOURI
APRIL 31, 2008

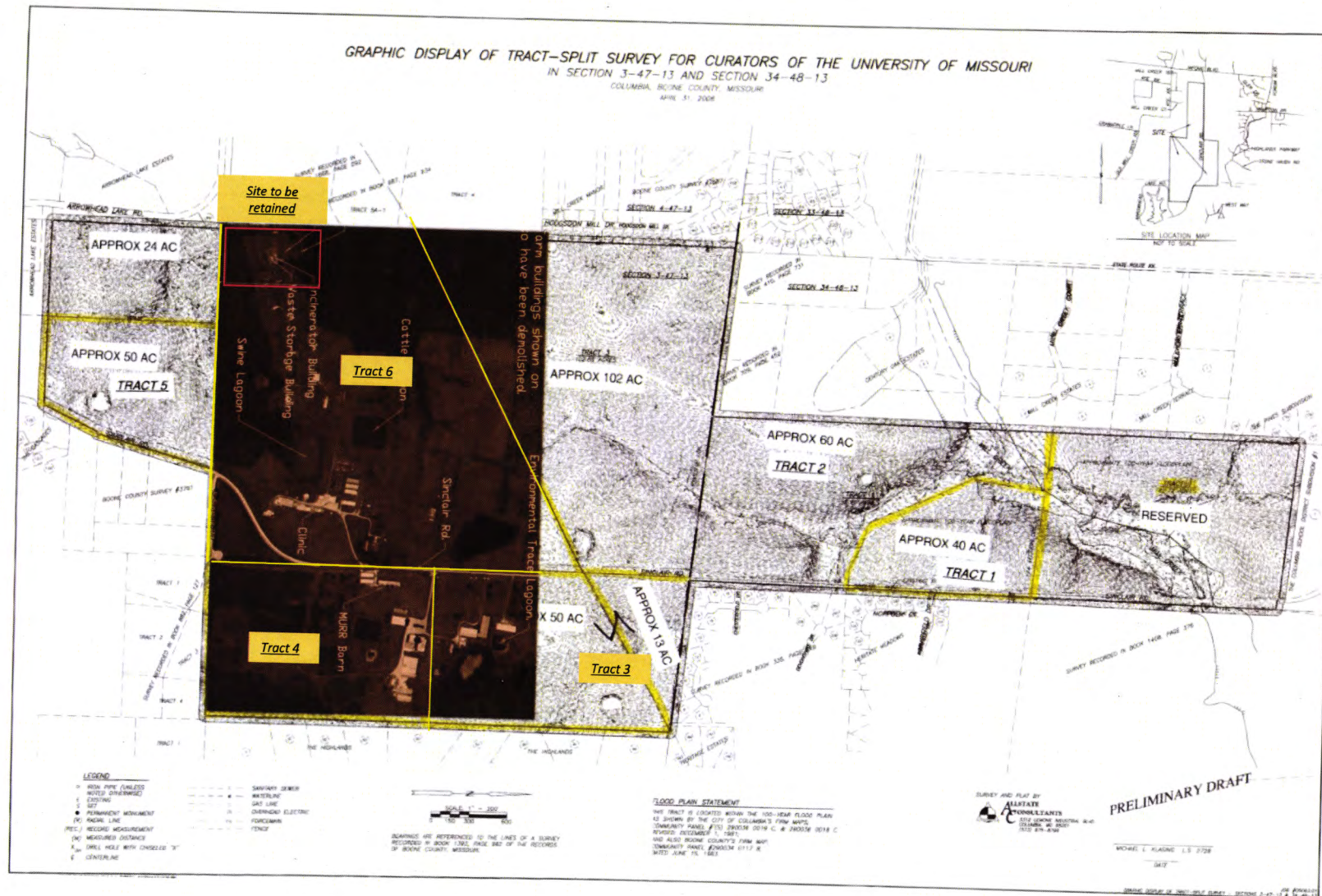
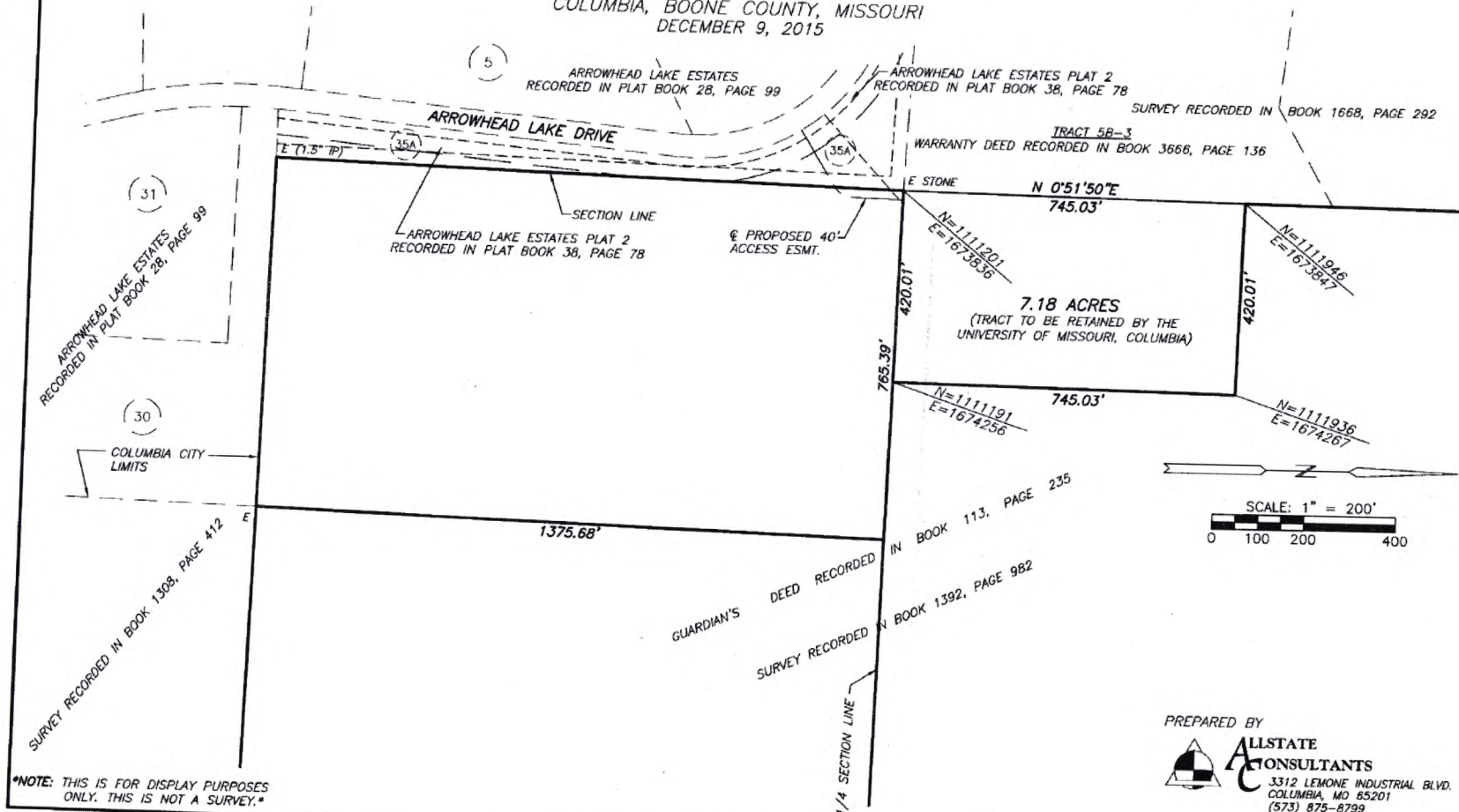


EXHIBIT FOR THE CURATORS OF THE UNIVERSITY OF MISSOURI IN SECTION 3-47-13

COLUMBIA, BOONE COUNTY, MISSOURI
DECEMBER 9, 2015



*NOTE: THIS IS FOR DISPLAY PURPOSES
ONLY. THIS IS NOT A SURVEY.*

ARROWHEAD
LAKE DRIVE

Missouri State Plane
Degrees Minutes Seconds

1673836.000 1111201.000
38°53'06.7524", -092°22'57.3368"

TRACT 5B-3
TY DEED RECORDED IN BOOK

Missouri State Plane
Degrees Minutes Seconds

1673847.000 1111946.000
38°53'14.1165", -092°22'57.1856"

E STONE

N 0°51'50"E 745.03'

N 88°39'05"W 420.01'

PROPOSED TRACT
7.18 ACRES
(TRACT TO BE RETAINED BY THE
UNIVERSITY OF MISSOURI, COLUMBIA)

GUARDIAN'S DEED RECORDED IN BOOK 113, PAGE 235
SURVEY RECORDED IN BOOK 1382, PAGE 982

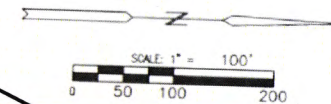
Missouri State Plane
Degrees Minutes Seconds

1674256.000 1111191.000
38°53'06.6482", -092°22'52.0251"

S 0°51'50"W 745.03'

Missouri State Plane
Degrees Minutes Seconds

1674267.000 1111936.000
38°53'14.0123", -092°22'51.8737"



*NOTE: THIS IS FOR DISPLAY PURPOSES
ONLY. THIS IS NOT A SURVEY.*

PLATTED BY UNIVERSITY OF MISSOURI PLATTING DIVISION, COLUMBIA, MISSOURI 65201



ALLSTATE
CONSULTANTS
3312 LEMONE INDUSTRIAL BLVD.
COLUMBIA, MO 65201
(573) 875-8799