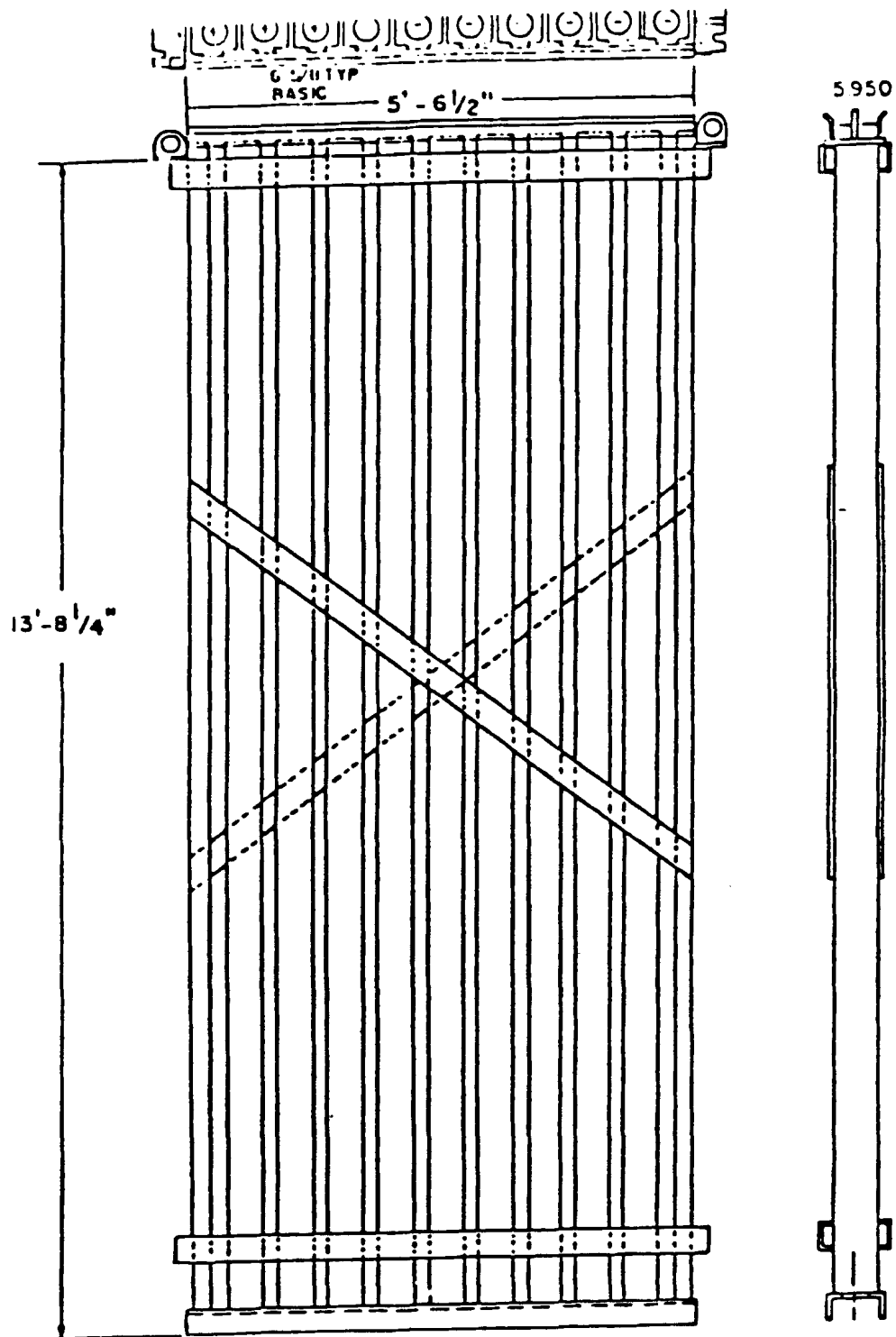


OCNGS UFSAR

Figures 9.1-1A through 9.1-1D

Deleted



GPU Nuclear

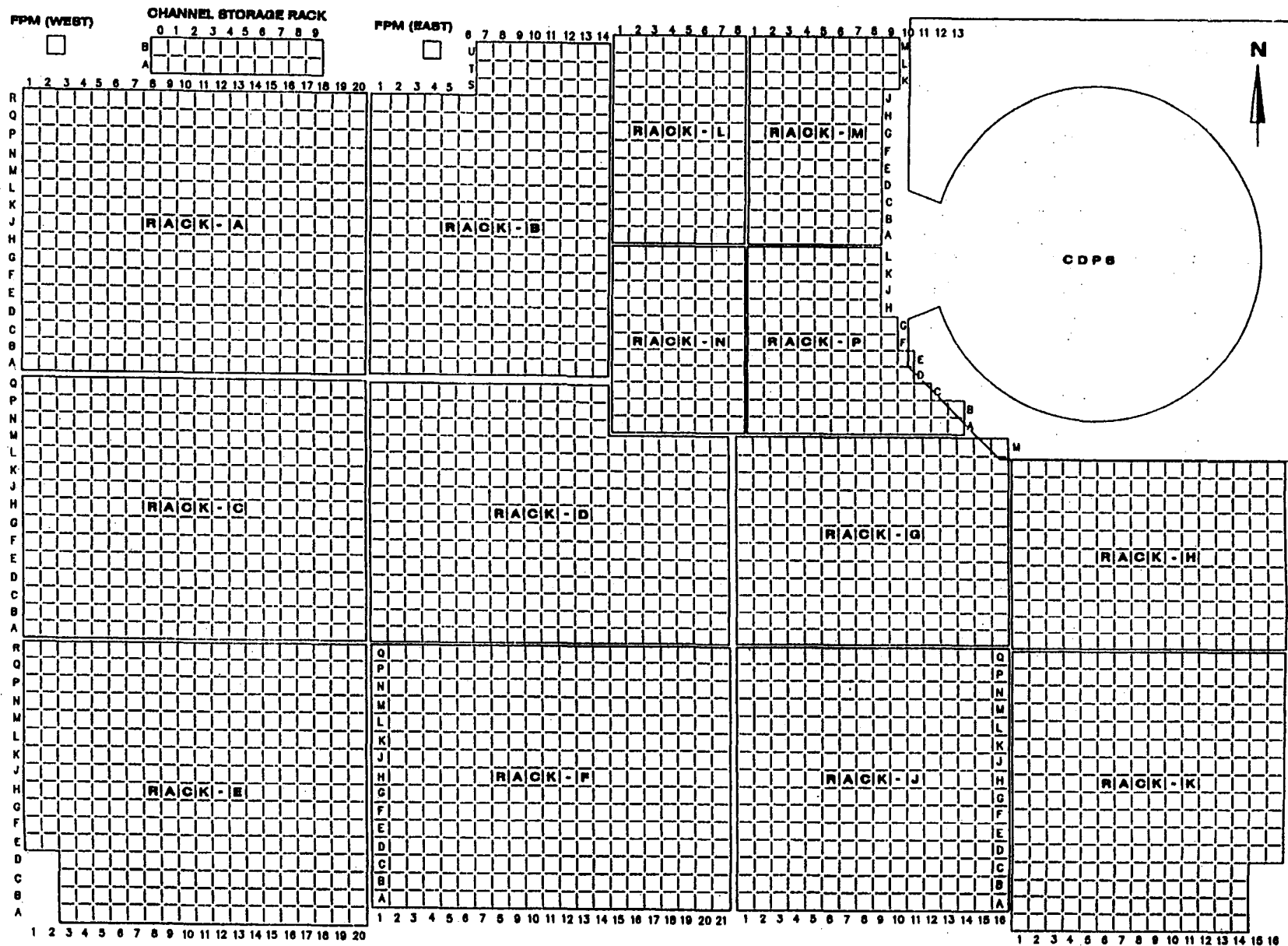
Oyster Creek

New Fuel Storage Rack

Update - 5

12/90

Fig. 9.1-2

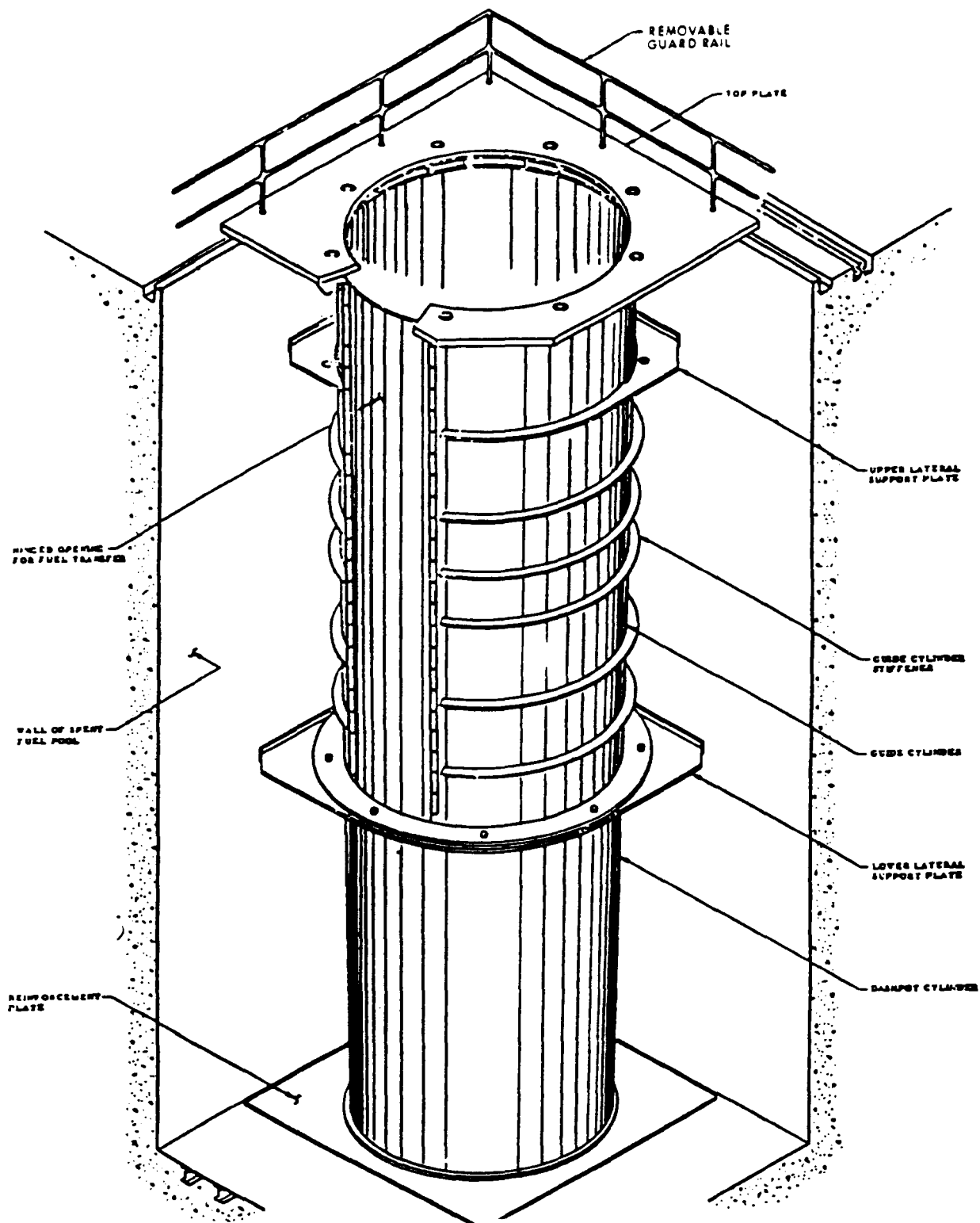


Rev. 12 04/01
 OYSTER CREEK NUCLEAR GENERATING STATION
 SPENT FUEL STORAGE POOL
 FIGURE 9.1-3

OCNGS UFSAR

Figures 9.1-4 through 9.1-5

Deleted



GPU Nuclear

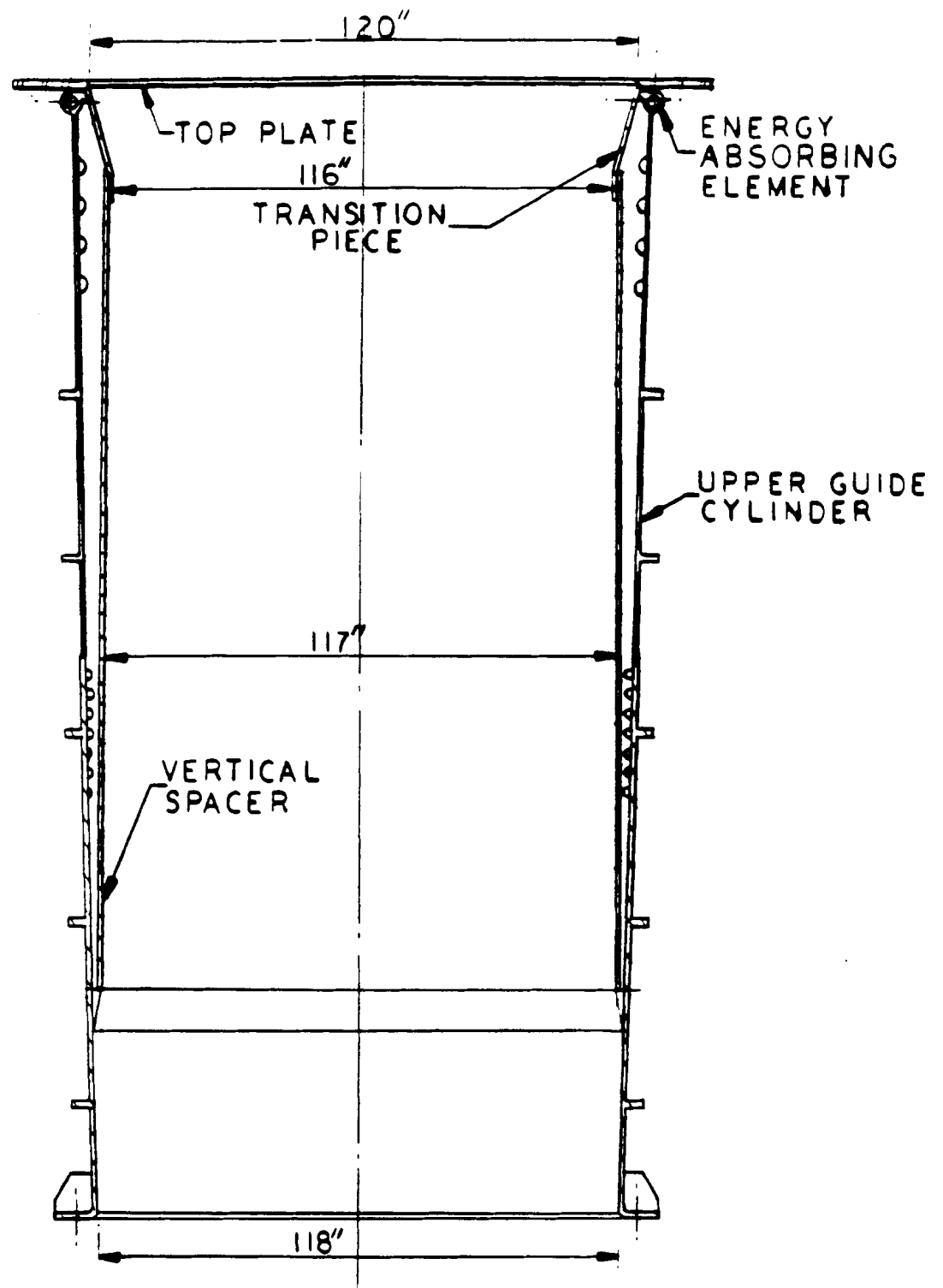
Update - 5

Oyster Creek

12/90

Guide Structure and Dash Pot Assembly

Fig. 9.1-6



GPU Nuclear

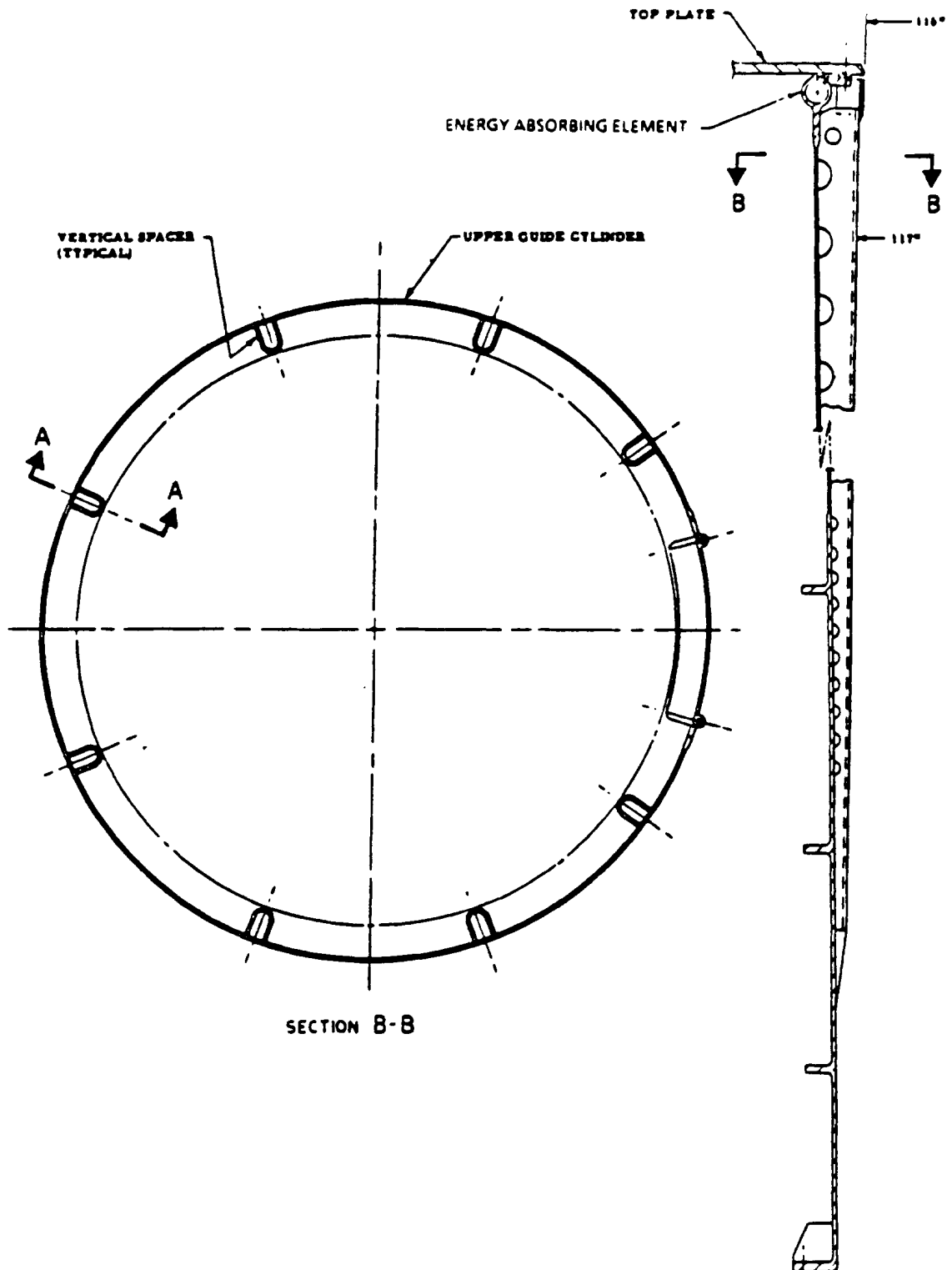
Update - 5

Oyster Creek

12/90

Cross Section Through Upper Guide Cylinder

Fig. 9.1-7



GPU Nuclear

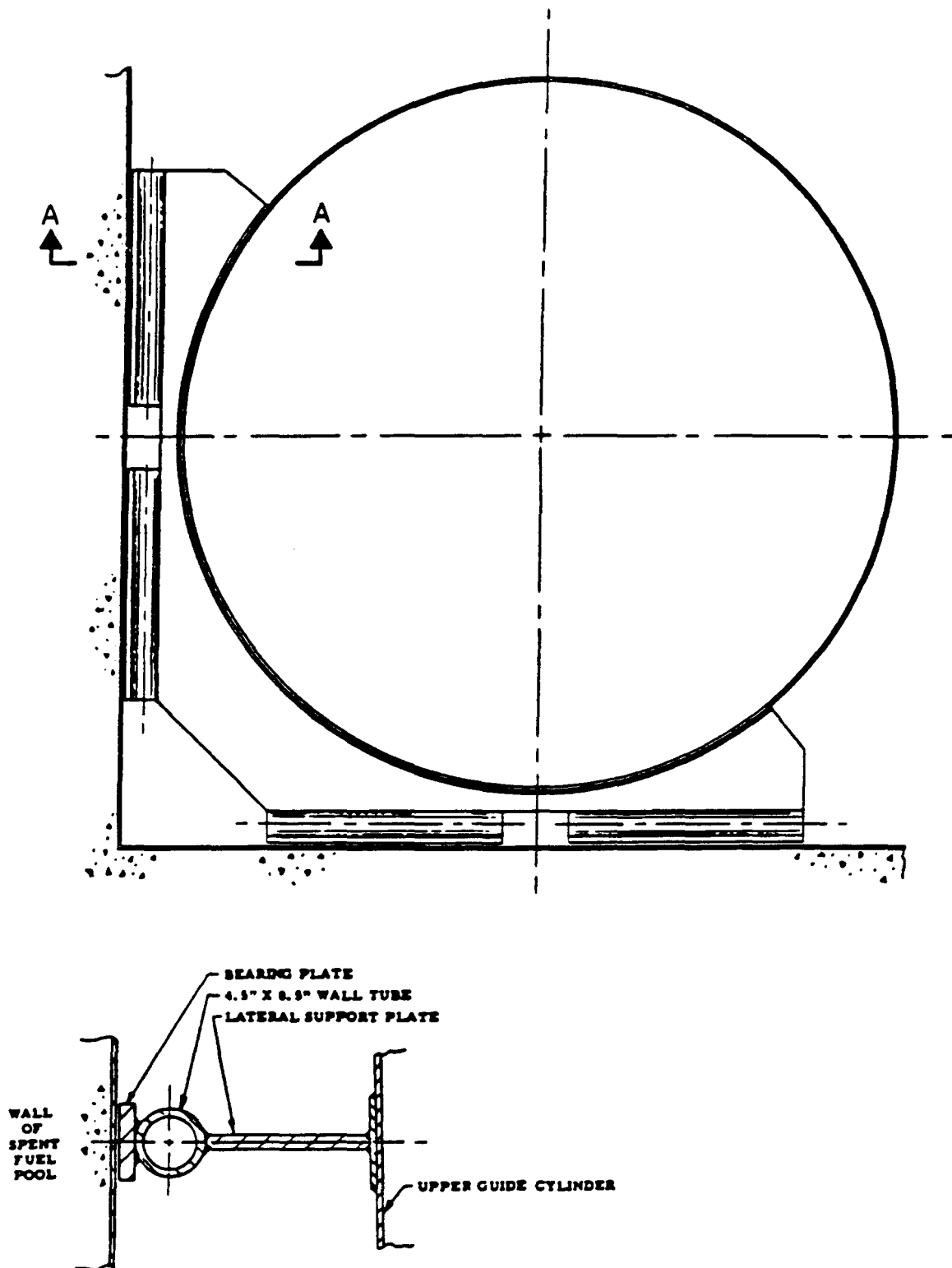
Update - 5

Oyster Creek

12/90

Vertical Spacers Inside Upper Guide Cylinder

Fig. 9.1-8



GPU Nuclear

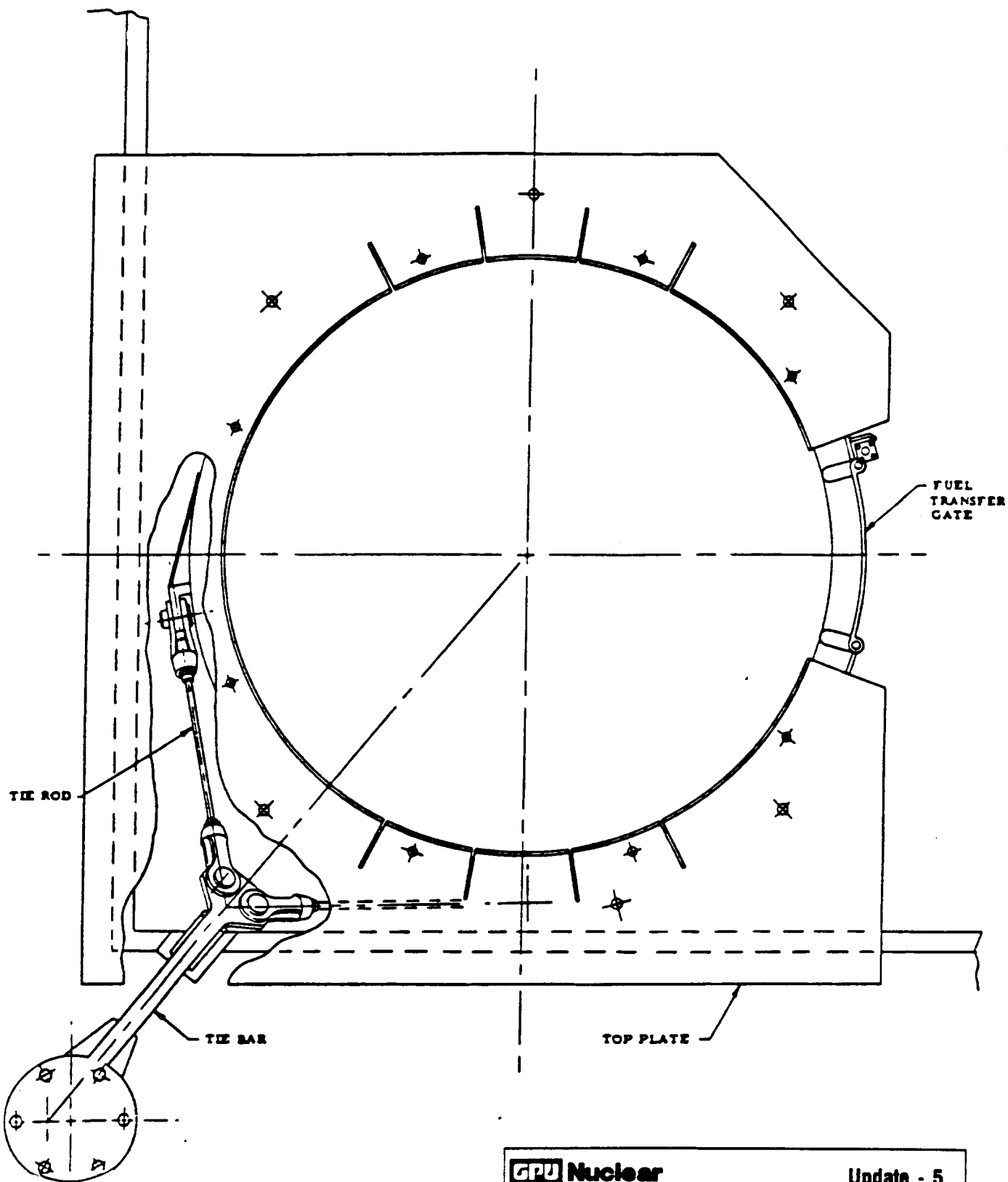
Update - 5

Oyster Creek

12/90

Energy Absorbing Elements on Lateral
Support Plate

Fig. 9.1-9



GPU Nuclear

Oyster Creek

Attachment to Spent Fuel Pool

Update - 5

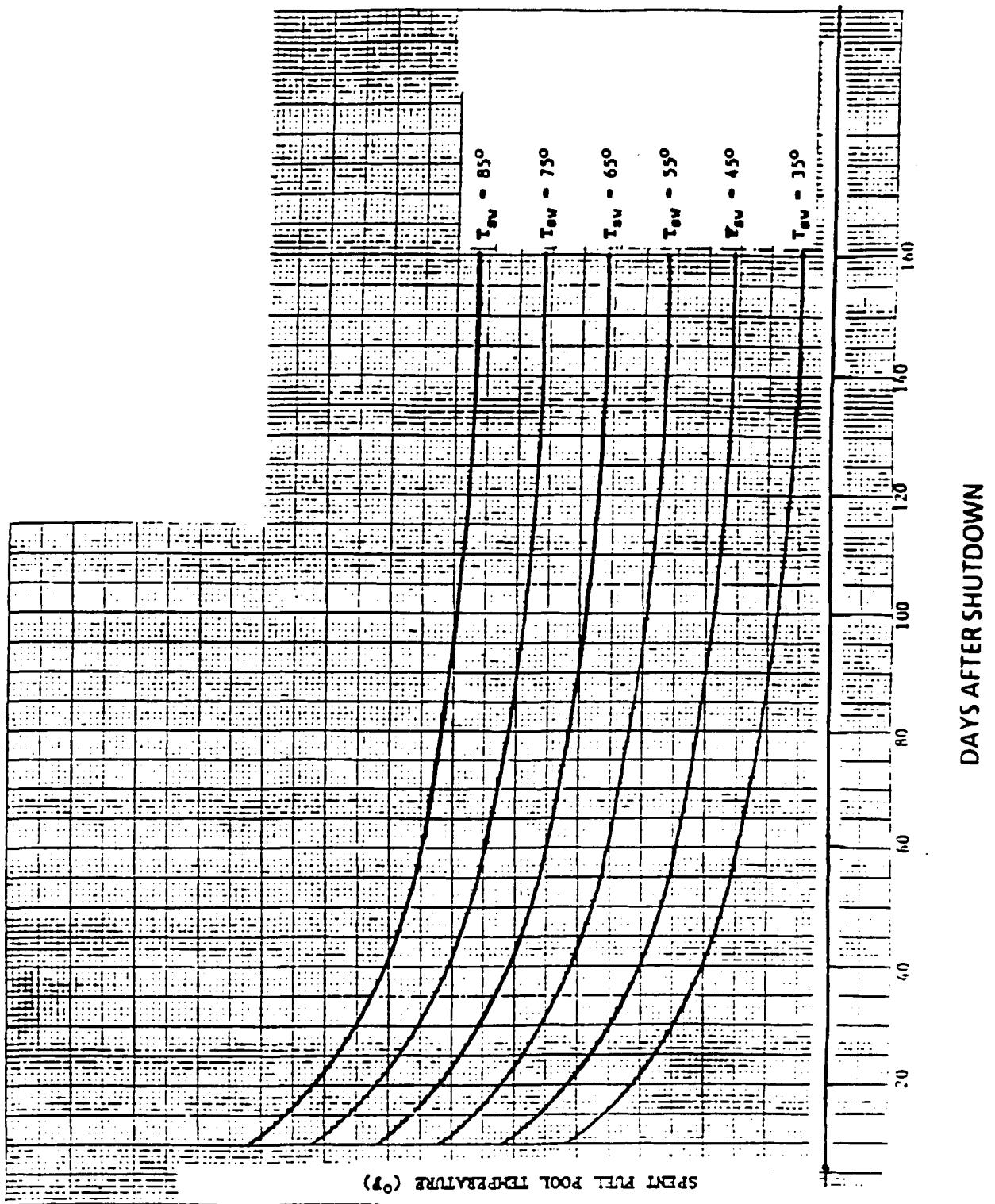
12/90

Fig. 9.1-10

OCNGS UFSAR

Figures 9.1-11 through 9.1-12B

Deleted



GPU Nuclear

Update - 5

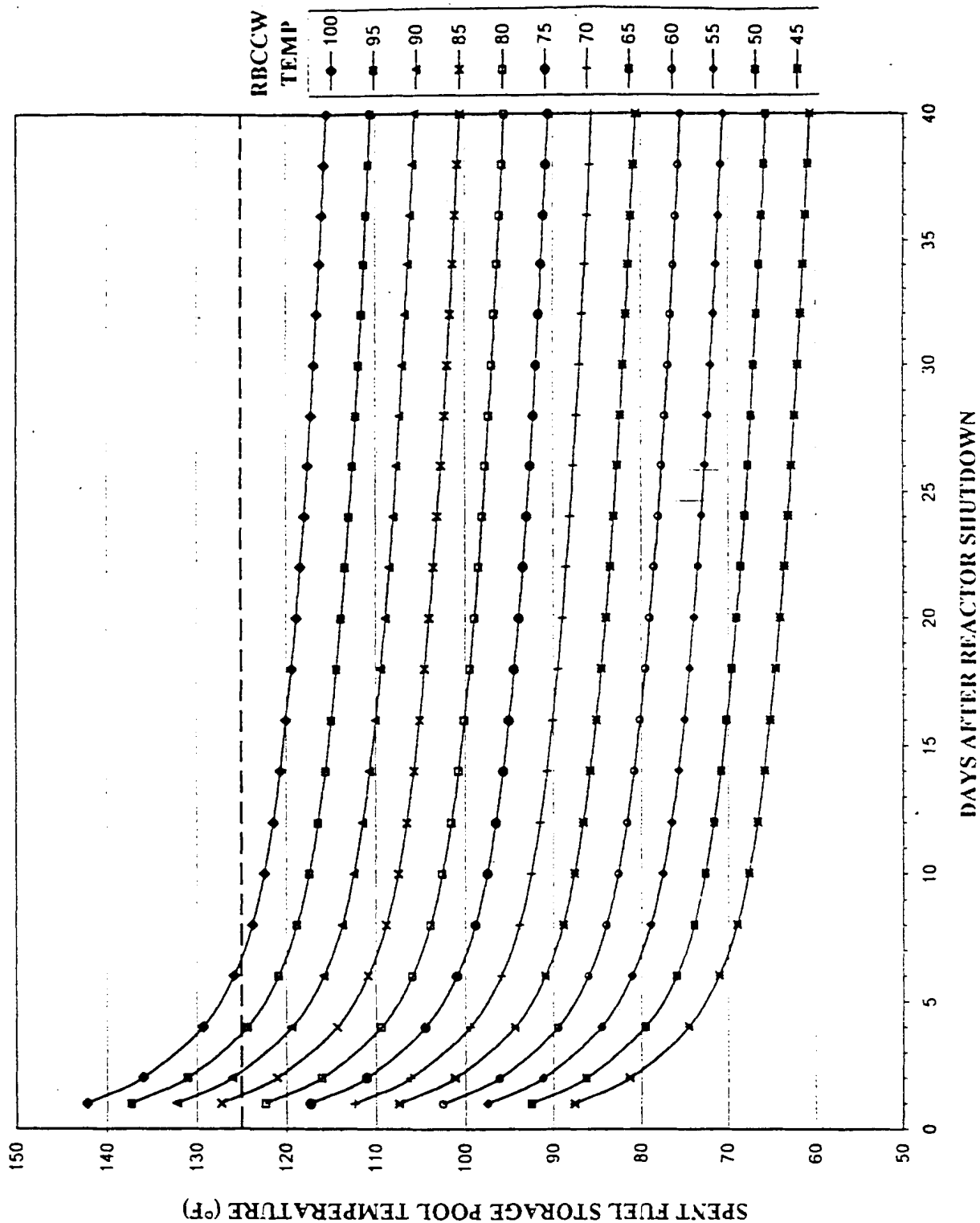
Oyster Creek

12/90

Fuel Pool Temperature vs Time After Shutdown
($Q_t = 18.2 \times 10^6$ Btu/hr)

Fig. 9.1-13

NORMAL REFUEL OFFLOAD

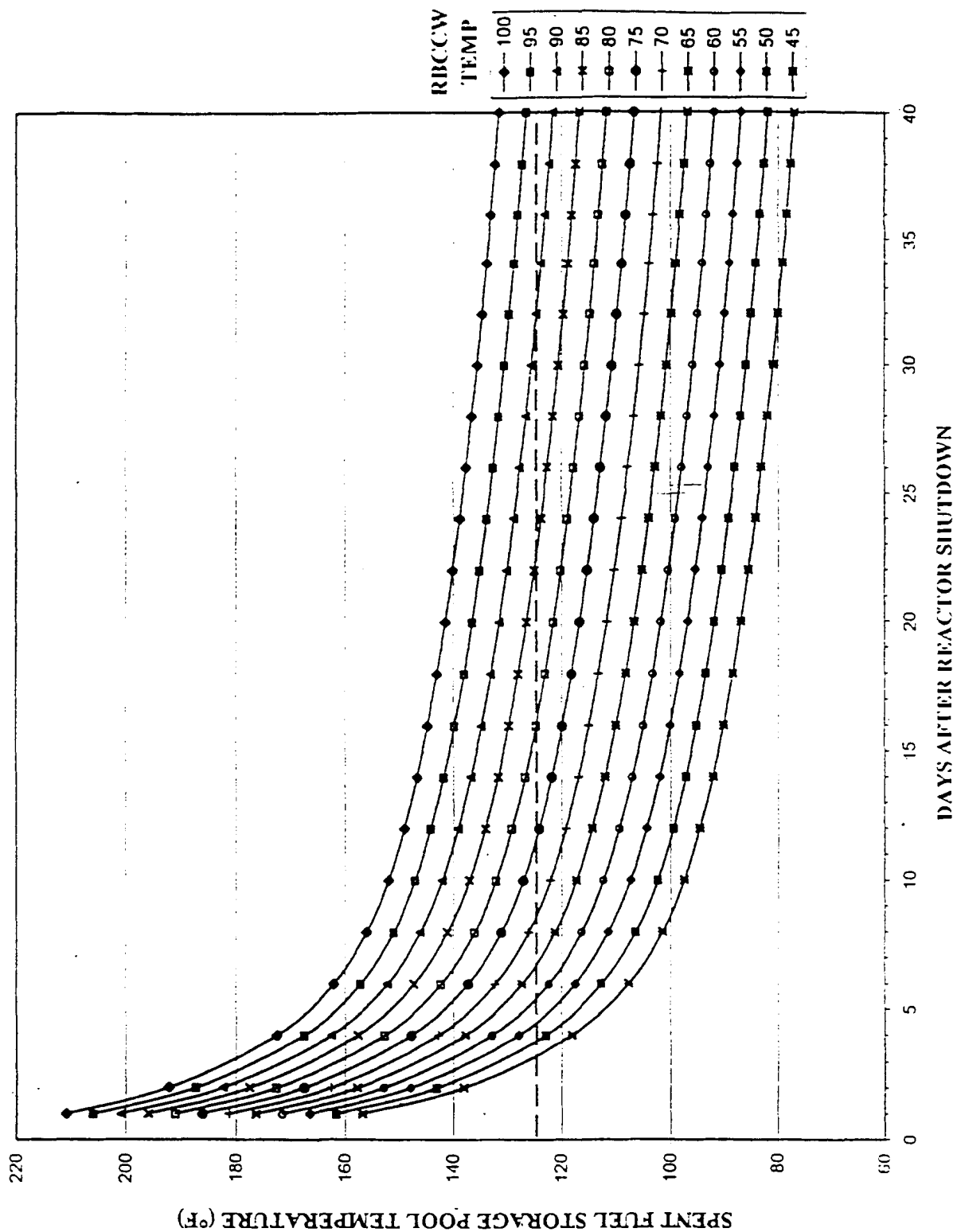


Update-11
04/99

Oyster Creek
Normal Refuel Offload
Spent Fuel Storage Pool Temperature
vs
Time After Reactor Shutdown

Fig.9.1-13A

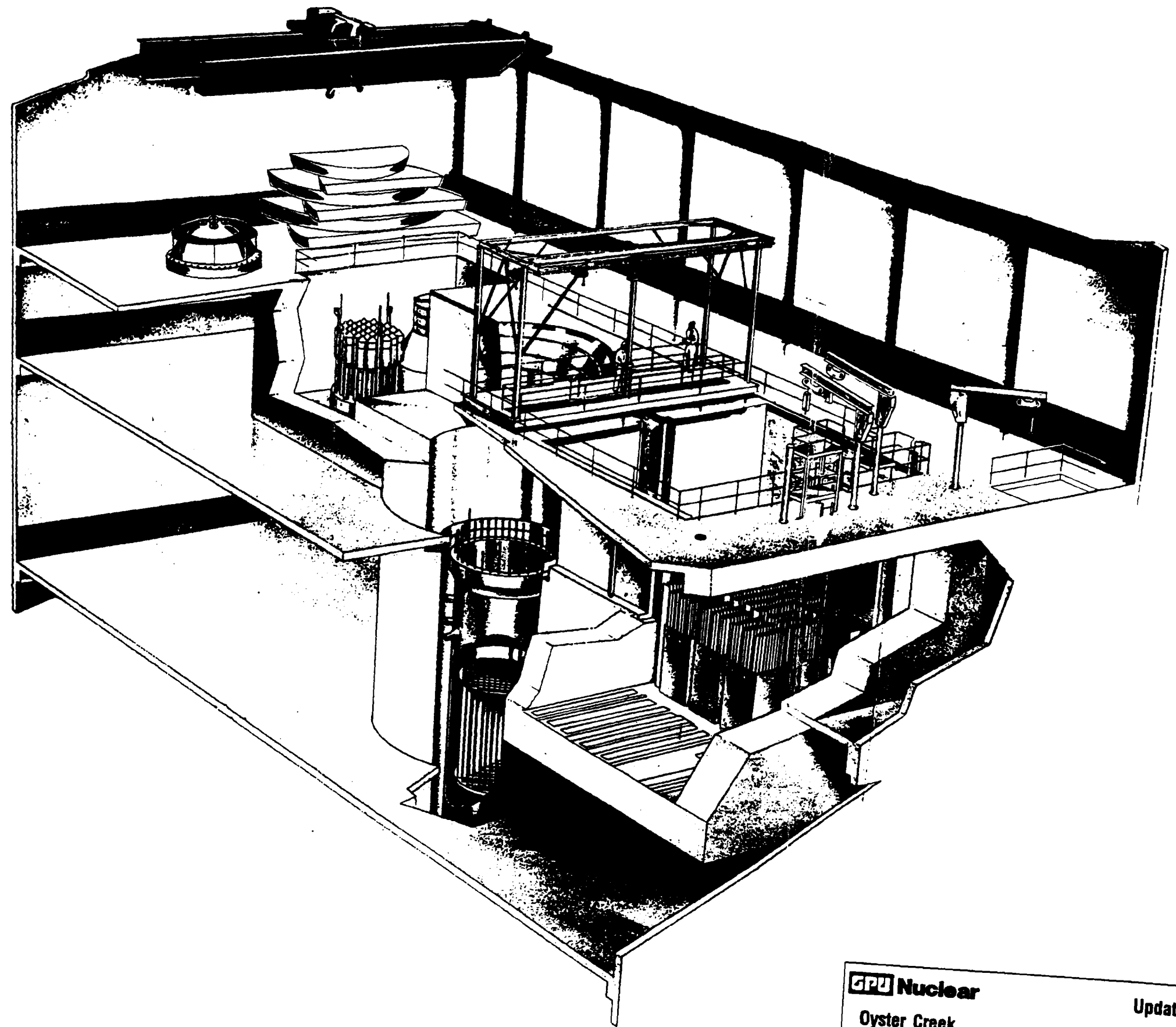
FULL CORE OFFLOAD



Oyster Creek
Full Core Offload
Spent Fuel Storage Pool Temperature
vs
Time After Reactor Shutdown

Update-11
04/99

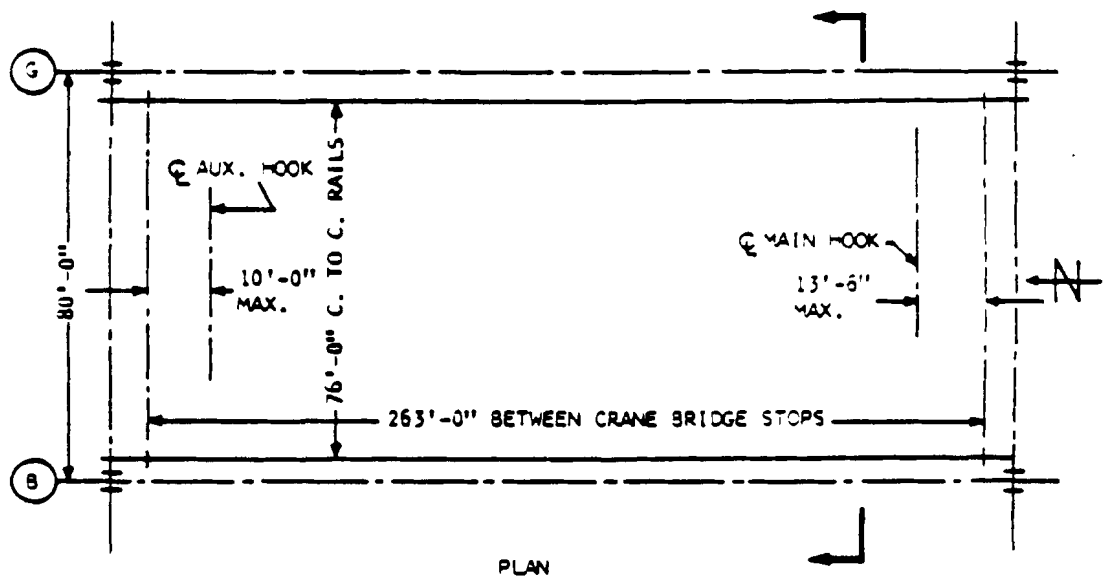
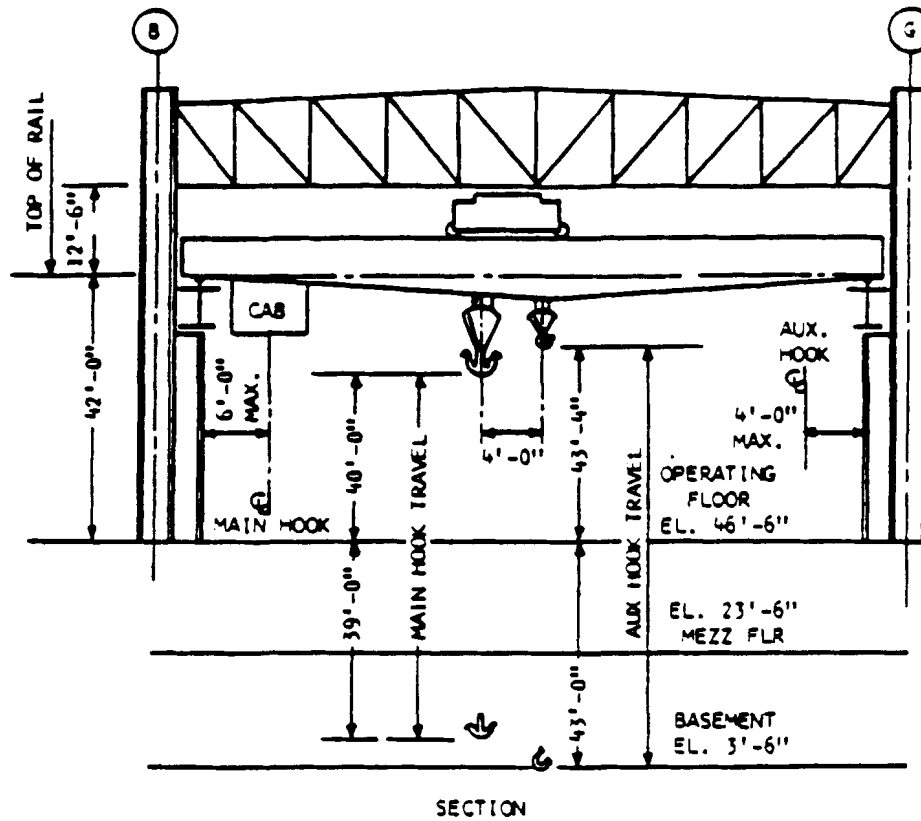
Fig.9.1-138



GPU Nuclear
Oyster Creek
Reactor Refueling System — Pictorial

Update - 5
12/90

Fig. 9.1-14



GPU Nuclear

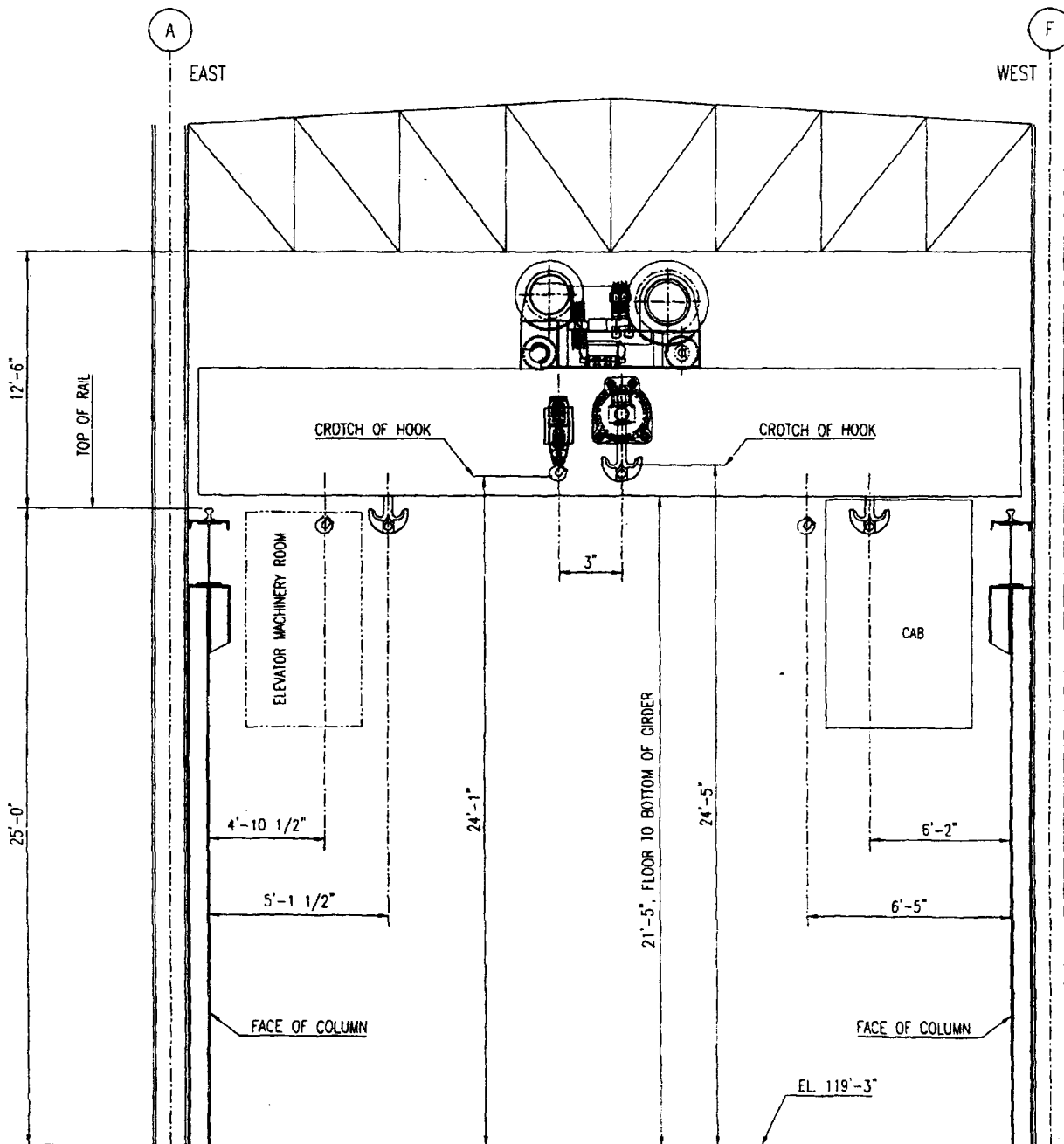
Update - 5

Oyster Creek

12/90

Turbine Building Crane, Limits of Travel

Fig. 9.1-15



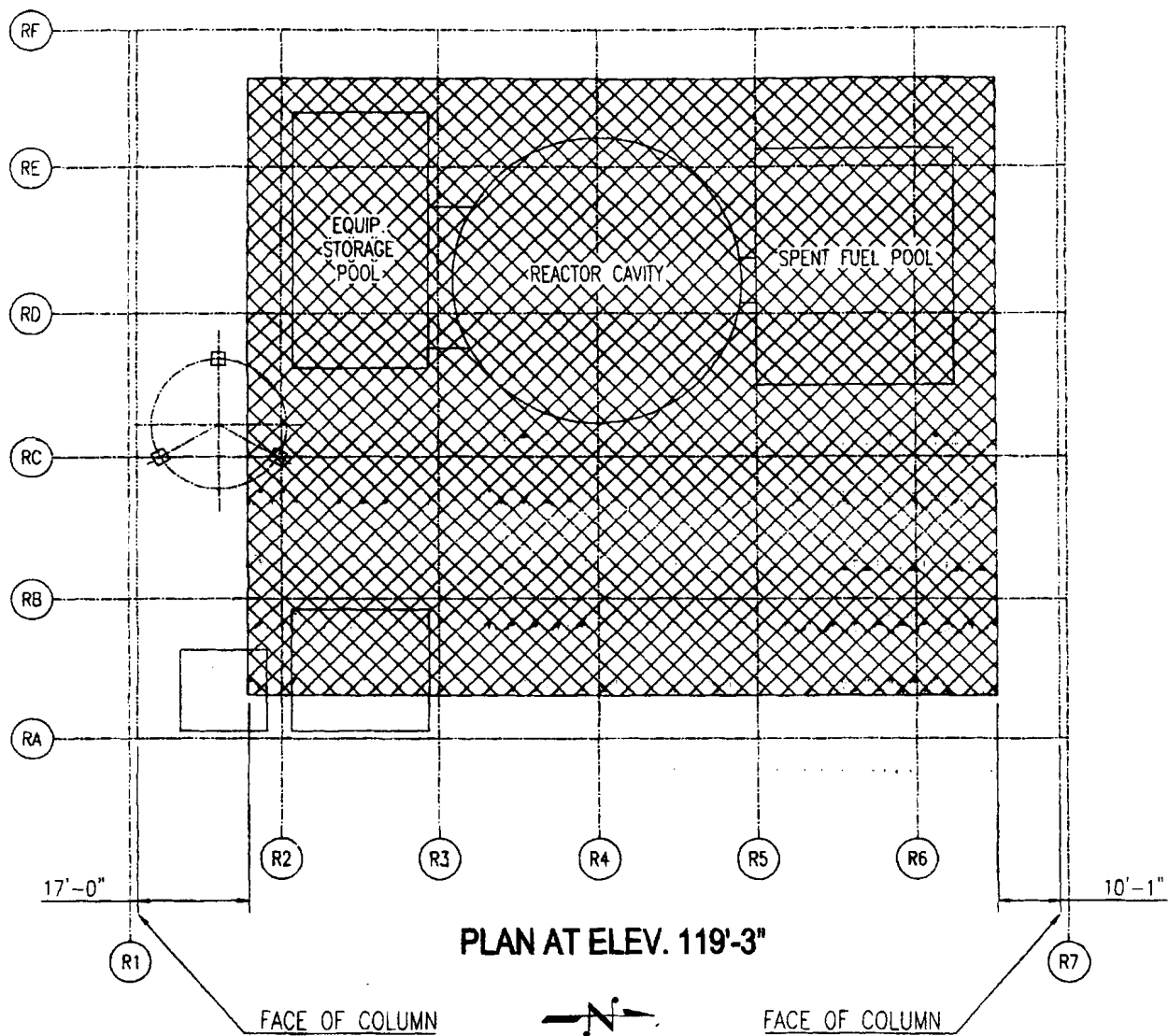
FABRICATION TOLERANCES	
0 - 2'-0" = ± 1/16	5'-1" - 10'-0" = ± 3/16
2'-1" - 5'-0" = ± 1/8	10'-1" & OVER = ± 1/4
DIMENSIONS ARE IN INCHES UNLESS OTHERWISE SPECIFIED	
MACHINING TOLERANCES UNLESS OTHERWISE SPECIFIED:	
FUNCTIONAL = ± 1/32	ANGLES = ± 1/2°
XXI = ± .015	✓ = 125 ✓
XXX = ± .005	
BREAK ALL SHARP EDGES	
TOLERANCES	

Rev. 13 04/03

OYSTER CREEK NUCLEAR GENERATING STATION

Reactor Building Crane, Limits of Travel

FIGURE 9.1-16 Sheet 1 of 3



NORTH / SOUTH AUX. HOIST HOOK APPROACHES

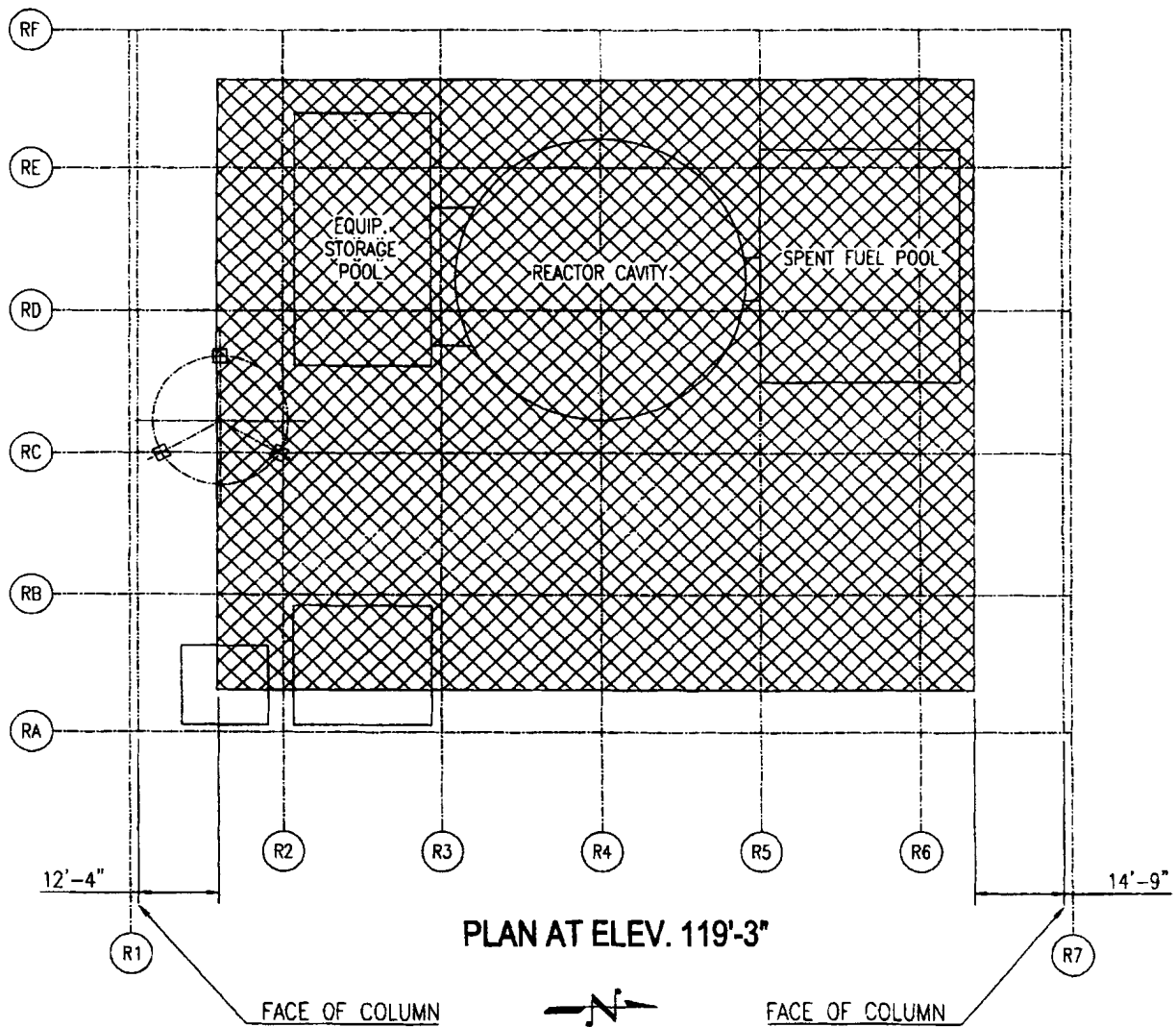
FABRICATION TOLERANCES	
0 - 2'-0" = $\pm 1/16$	5'-1" - 10'-0" = $\pm 3/16$
2'-1" - 5'-0" = $\pm 1/8$	10'-1" & OVER = $\pm 1/4$
DIMENSIONS ARE IN INCHES UNLESS OTHERWISE SPECIFIED	
MACHINING TOLERANCES UNLESS OTHERWISE SPECIFIED:	
FRACTIONAL = $\pm 1/32$	ANGLES = $\pm 1/2^\circ$
X.XX = $\pm .015$	✓ = 125 ✓
X.XXX = $\pm .005$	
BREAK ALL SHARP EDGES	
TOLERANCES	

Rev. 13 04/03

OYSTER CREEK NUCLEAR GENERATING STATION

**Reactor Building Crane,
Limits of Travel**

FIGURE 9.1-16 Sheet 2 of 3



NORTH / SOUTH MAIN HOIST HOOK APPROACHES

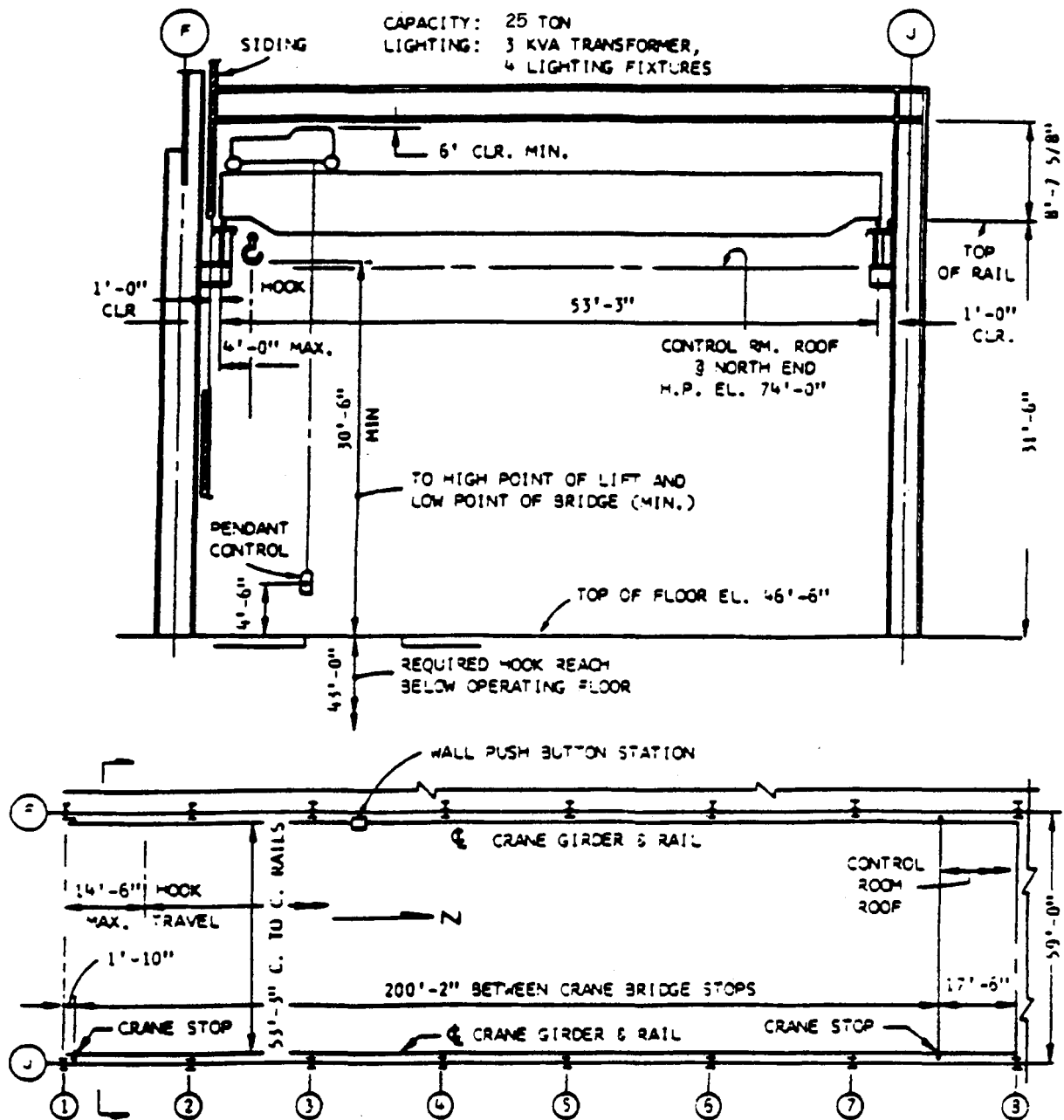
FABRICATION TOLERANCES			
0 - 2'-0"	= ± 1/16	5'-1" - 10'-0"	= ± 3/16
2'-1" - 5'-0"	= ± 1/8	10'-1" & OVER	= ± 1/4
DIMENSIONS ARE IN INCHES UNLESS OTHERWISE SPECIFIED			
MACHINING TOLERANCES UNLESS OTHERWISE SPECIFIED:			
FRACTIONAL	= ± 1/32	ANGLES	= ± 1/2°
X.JXX	= ± .015	✓	= 125°
X.XXX	= ± .005		
BREAK ALL SHARP EDGES			
TOLERANCES			

Rev. 13 04/03

OYSTER CREEK NUCLEAR GENERATING STATION

Reactor Building Crane, Limits of Travel

FIGURE 9.1-16 Sheet 3 of 3



Rev. 12 04/01
OYSTER CREEK NUCLEAR GENERATING STATION

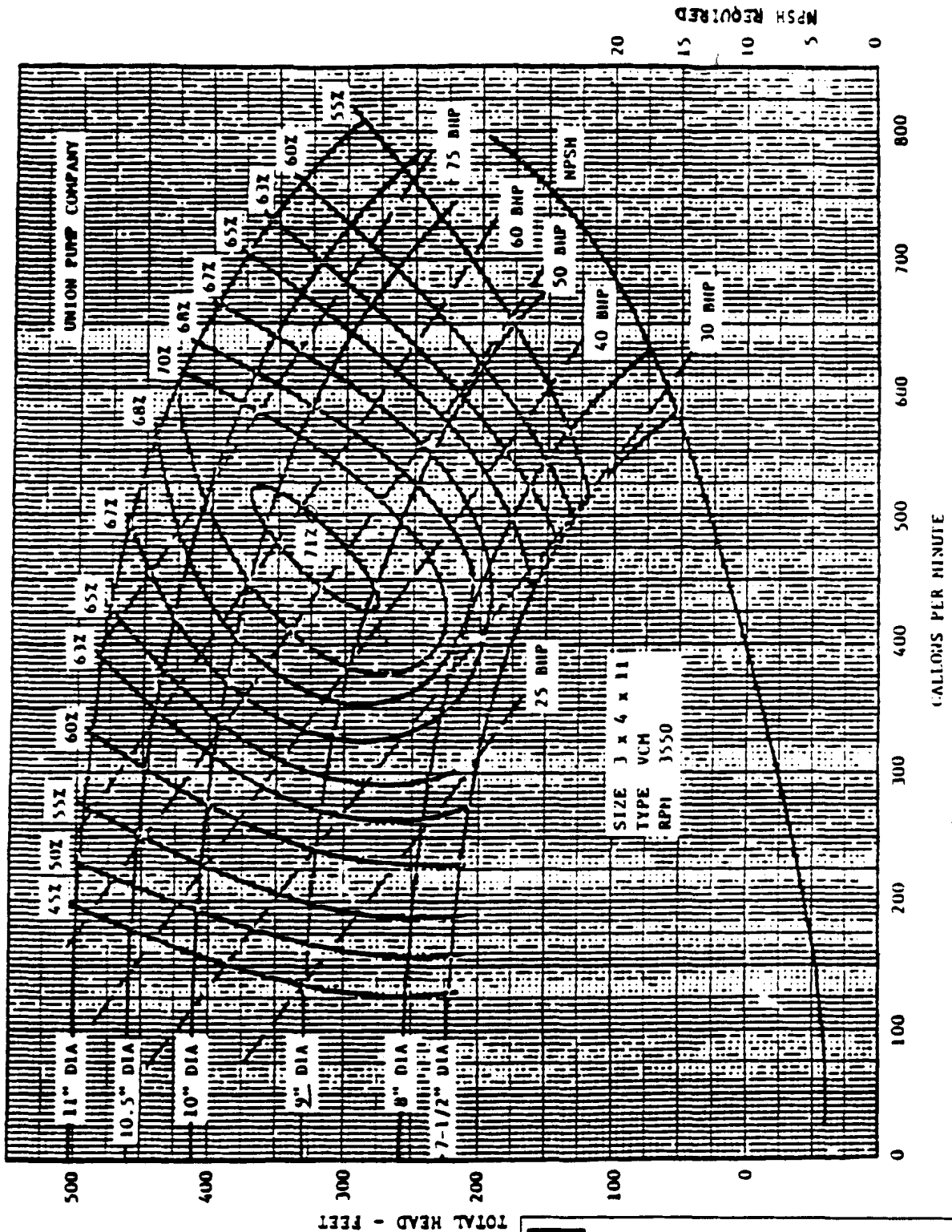
Heater Bay Crane, Limits of Travel

FIGURE 9.1-17

OCNGS UFSAR

Figures 9.1-18 through 9.1-19

Deleted



GPU Nuclear

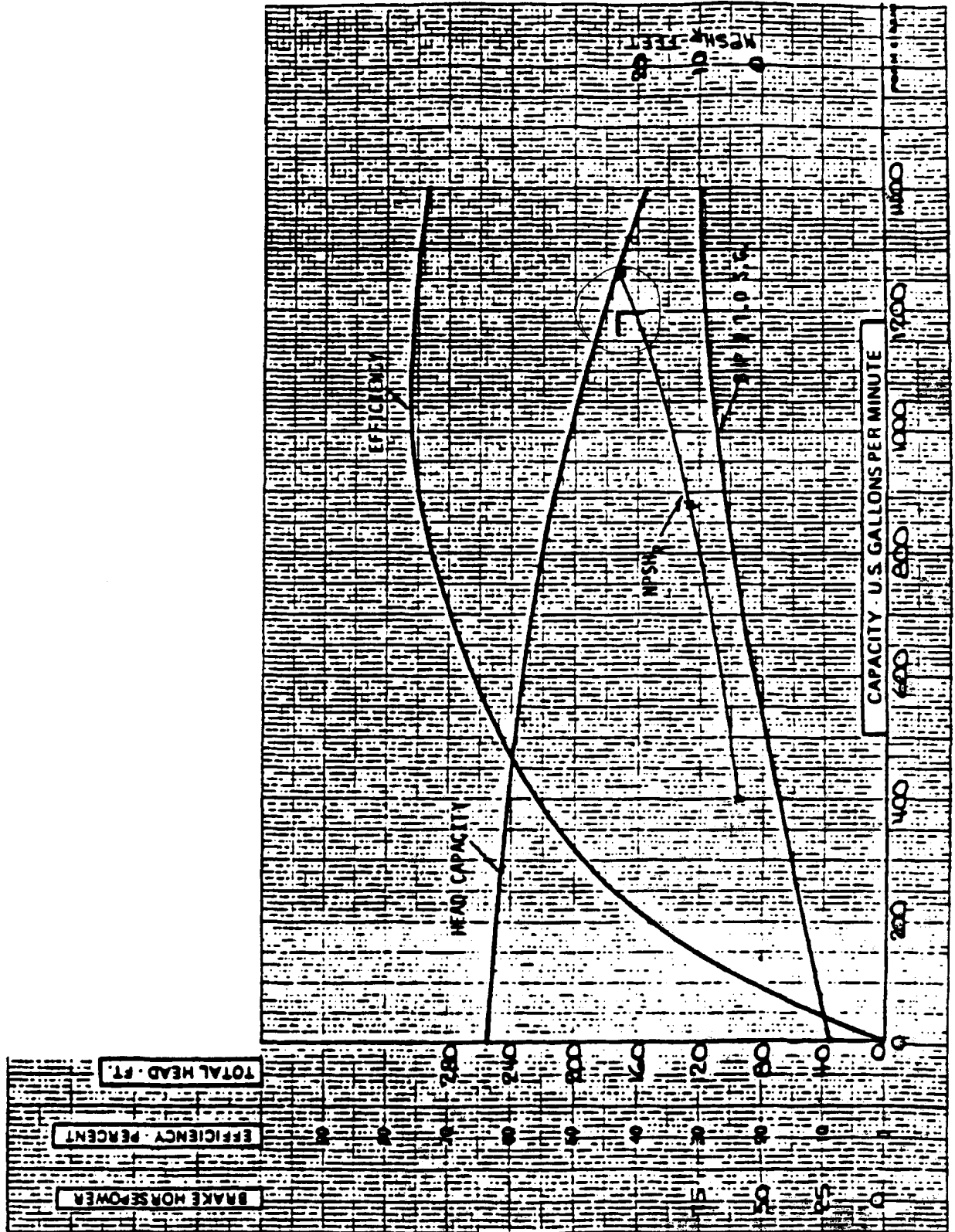
Oyster Creek

Fuel Pool Pump Performance Data

Update - 5

12/90

Fig. 9.1-20



GP Nuclear

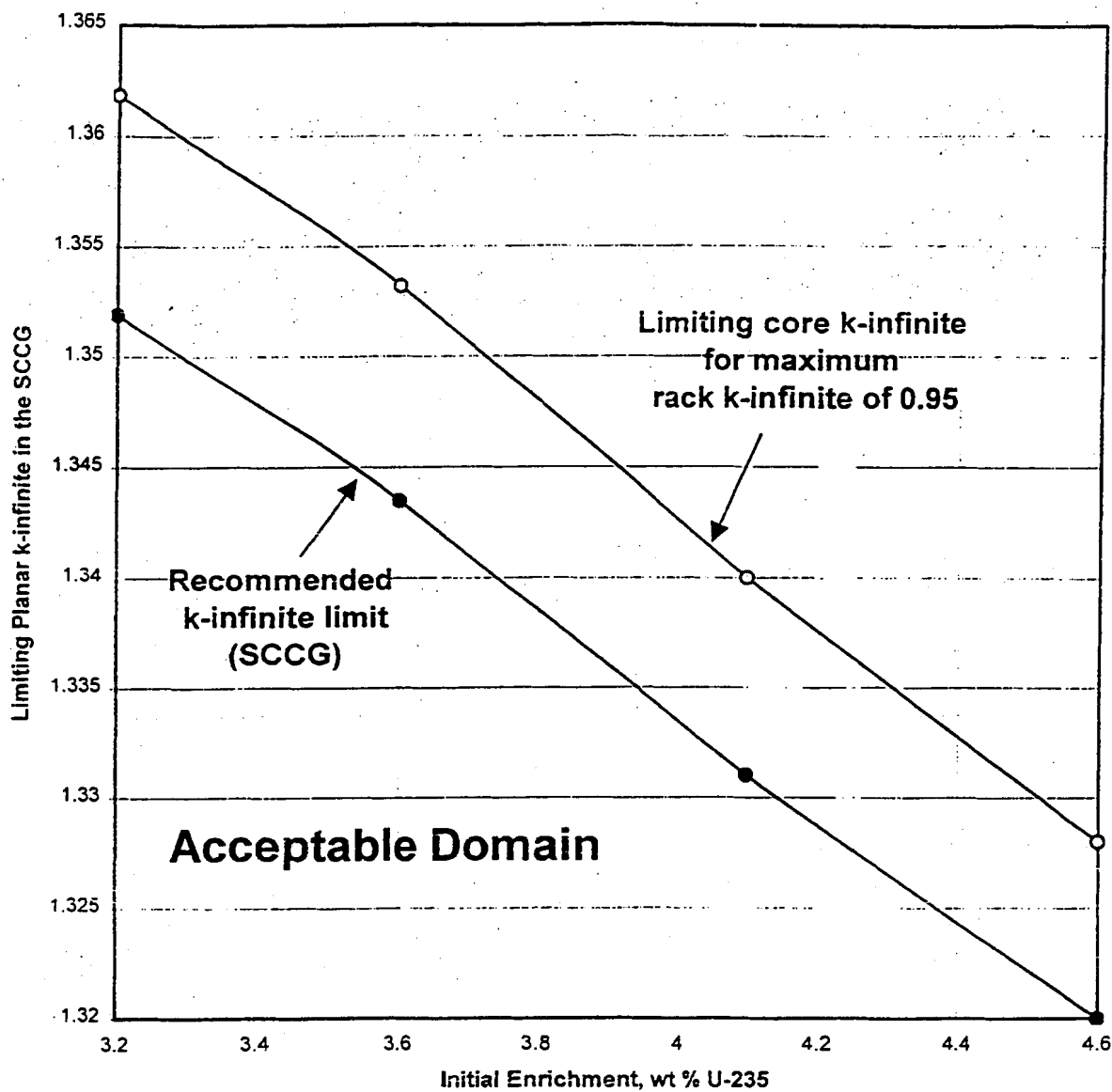
Update - 5

Oyster Creek

12/90

Augmented Spent Fuel Pool Pumps
Characteristic Curve

Fig. 9.1-21



Rev. 12 04/01

OYSTER CREEK NUCLEAR GENERATING
STATION

LIMITING K -INFINITE IN THE STANDARD
COLD CORE GEOMETRY FOR FUEL
ENRICHMENTS BETWEEN 3.2 AND 4.6%

FIGURE 9.1-22

OCNGS UFSAR

Figures 9.2-1A through 9.2-11

Deleted

OCNGS UFSAR

Figures 9.3-1A through 9.3-10

Deleted

OCNGS UFSAR

Figure 9.3-12

Deleted

OCNGS UFSAR

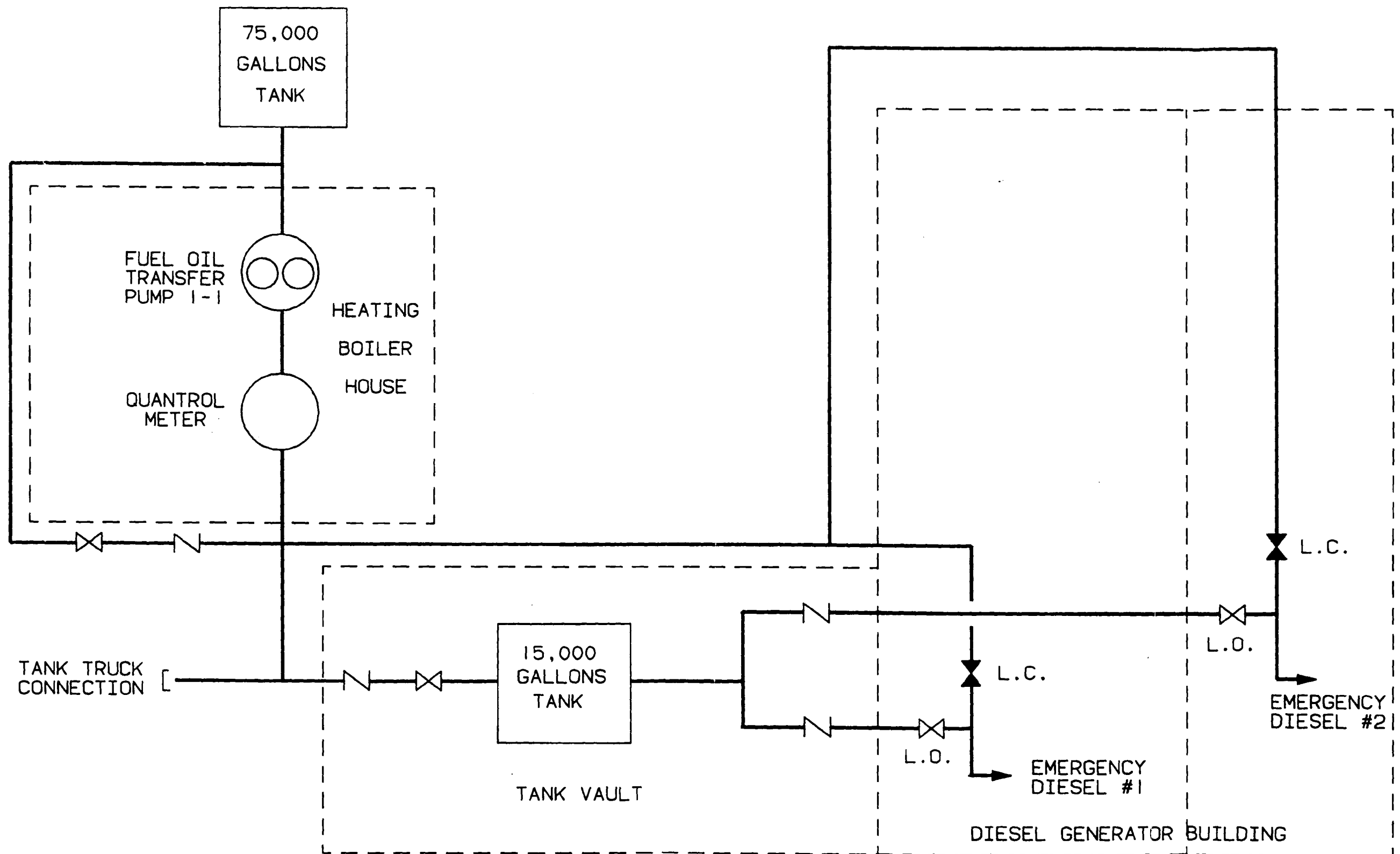
Figures 9.4-1A through 9.4-5C

Deleted

OCNGS UFSAR

Figures 9.5-1A through 9.5-2B

Deleted



GPU Nuclear

Oyster Creek

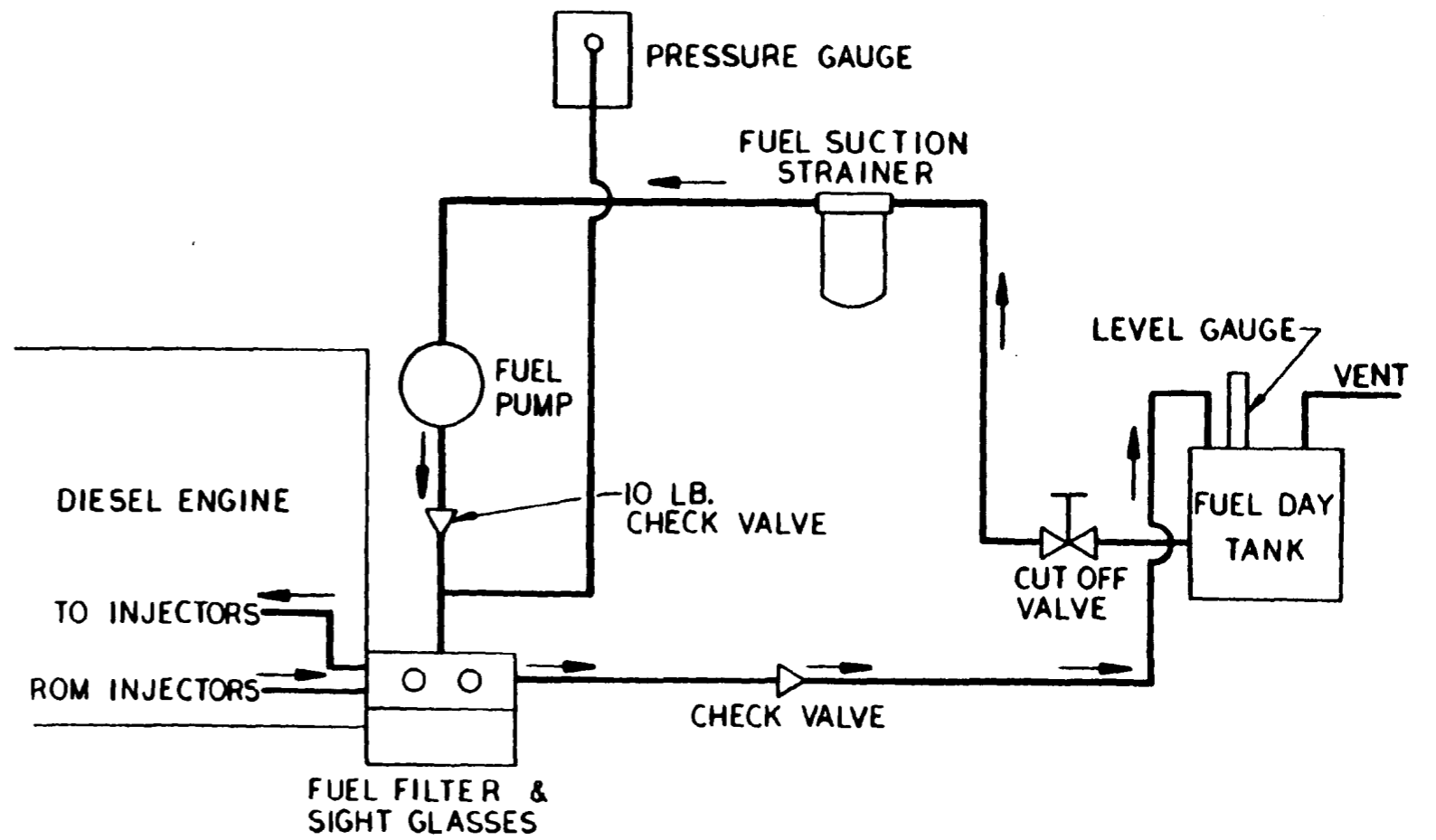
Diesel Generator
Equipment Layout

CADD #S1B,SKM,00,0281,001-,0601

Update-6

12/91

Fig.9.5-3

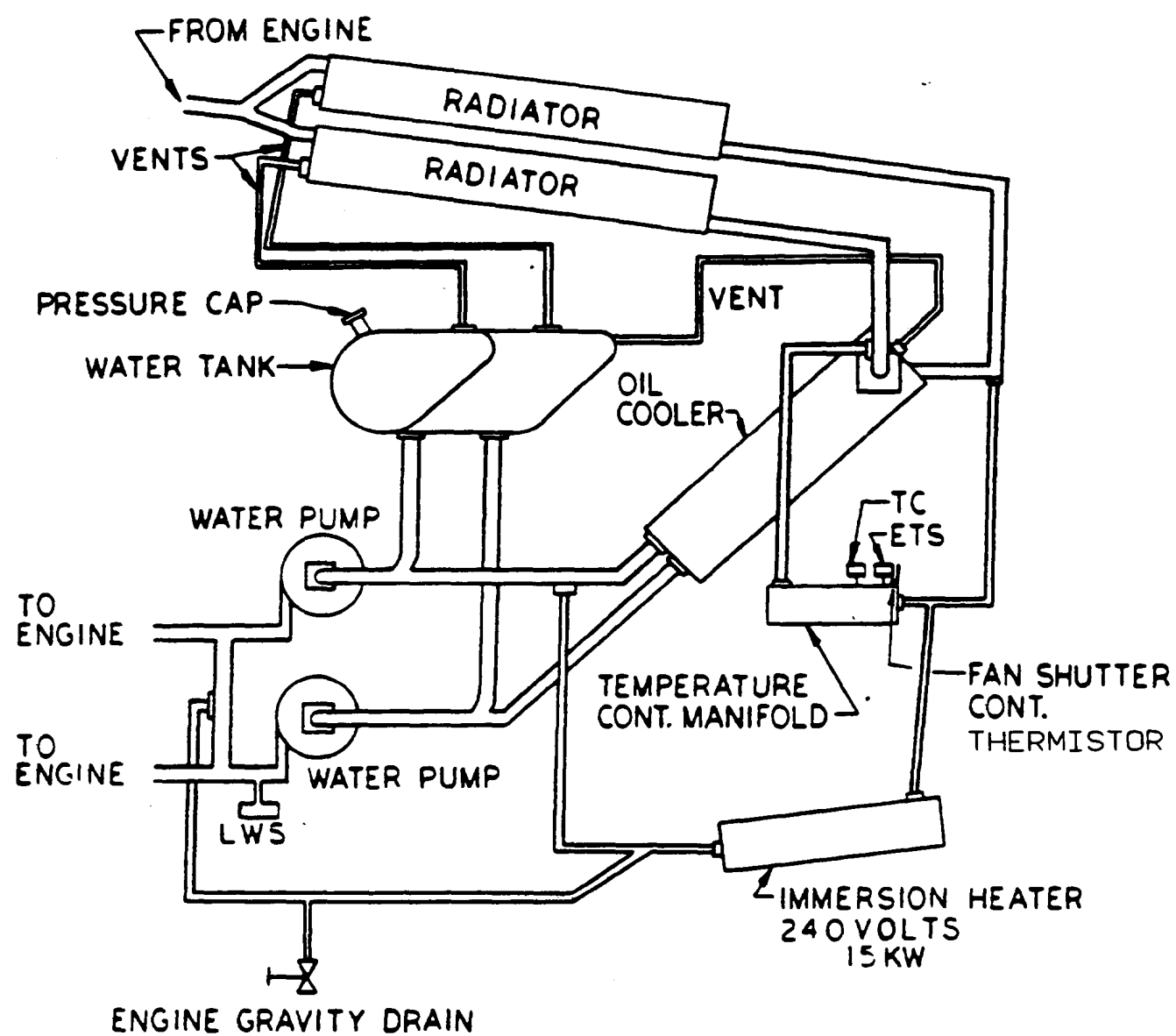


ENR Nuclear
 Oyster Creek
 Diesel Generator Fuel Oil Schematic
 Update - 5
 12/90
 Fig. 9.5-4

OCNGS UFSAR

Figure 9.5-5

Deleted



GPU Nuclear

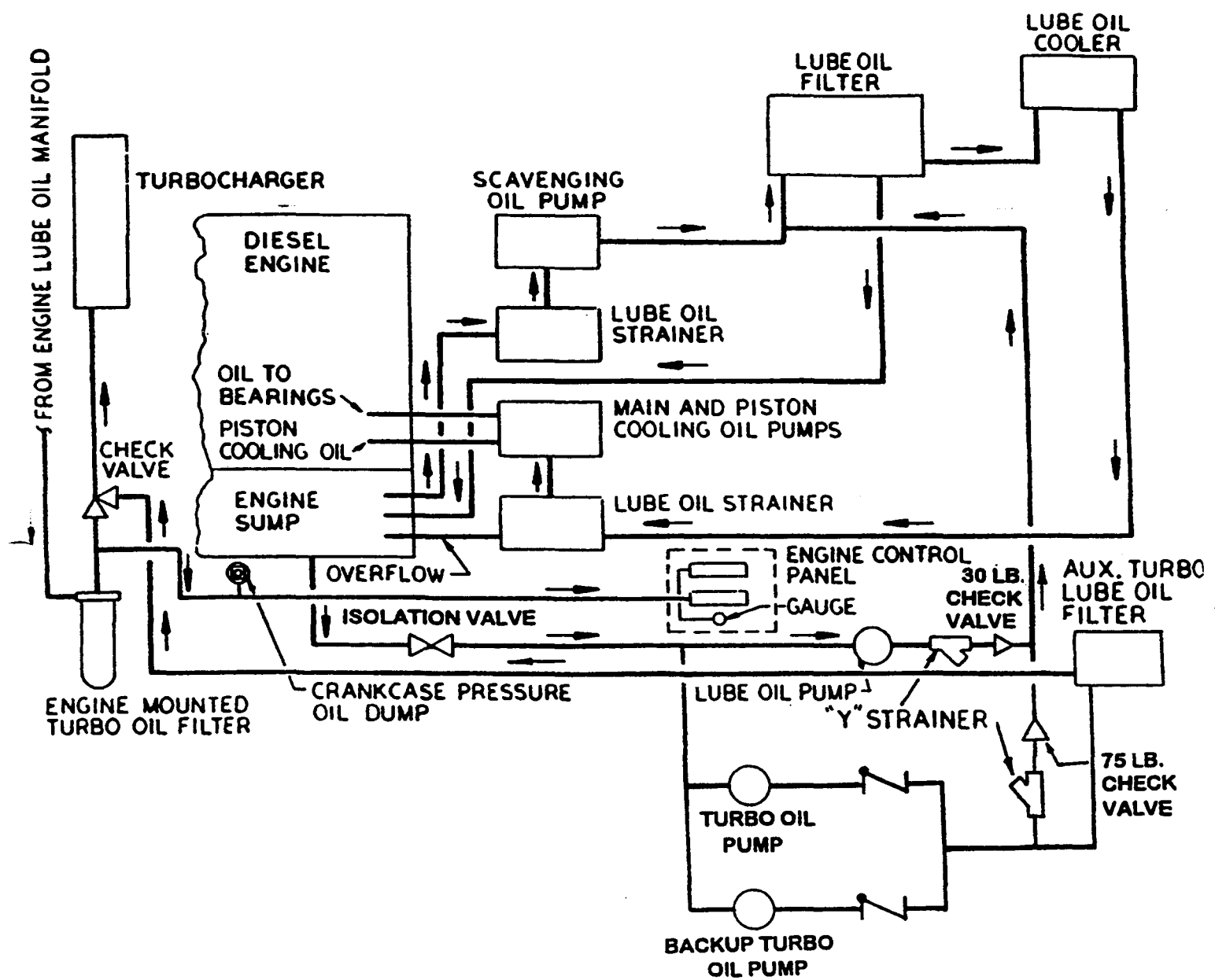
Update 9

Oyster Creek

6/95

Diesel Generator Cooling System Schematic

Fig. 25-6



GPU Nuclear

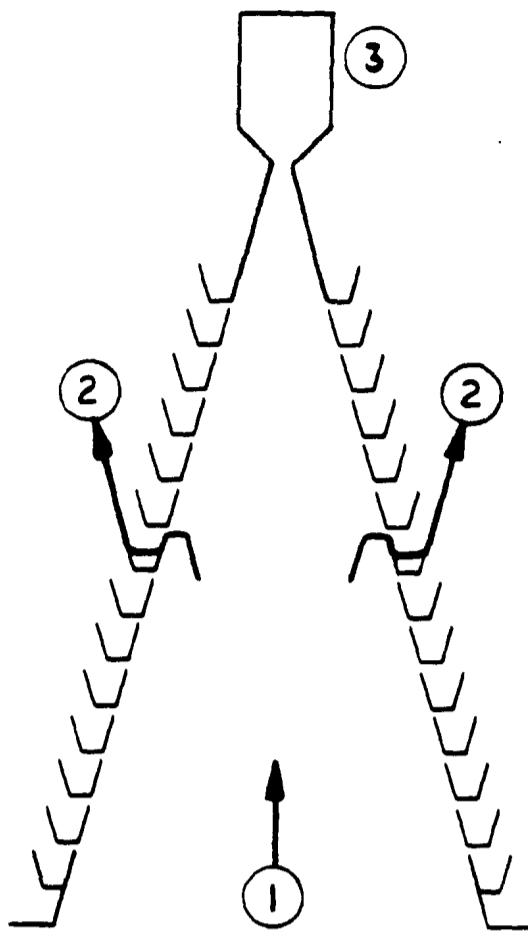
Update - 10

Oyster Creek

04/97

Diesel Generator Lube Oil System Schematic

Fig. 9.5-7



- 1-OUTSIDE AIR INTAKE
- 2-CLEAN AIR INTO SEALED
COMPARTMENT
- 3-BLOWER DRIVEN AIR
CARRYING DIRT

GPU Nuclear

Oyster Creek

Diesel Generator Inertial Air Filter Cell Diagram

Update - 5

12/90

Fig. 9.5-8