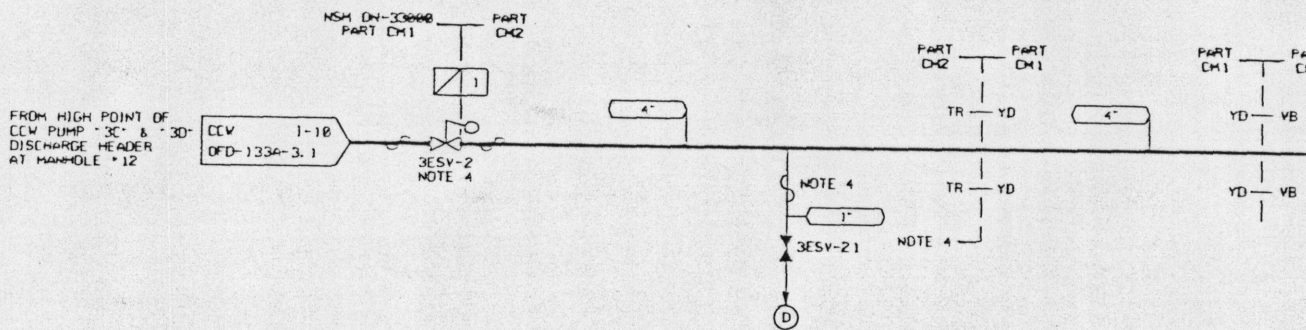


H
G
F
E
D
C
B
A



NOTES:

1. OPERATING MODE REPRESENTED BY BOLD LINES.
NORMAL ESY PUMP ALIGNMENT TO MAINTAIN SIPHON READINESS.
2. EXHAUST IS DUCTED OUTSIDE TO LIMIT HUMIDITY IN VACUUM BUILDING.
FLEXIBLE CONNECTION TO BE USED TO ALLOW EASY REMOVAL FOR ATTACHMENT OF PORTABLE FLOW TESTING INSTRUMENTS.
3. MINIMUM FLOW LINE THROTTLE VALVES (3ESV-16, 17) LOCKED THROTTLED TO ALLOW GREATER THAN 85%/HR. OF DRY AIR FLOW FOR ESY PUMP PROTECTION.
4. LINE TO BE HEAT TRACED AROUND THE FLOAT VALVE AND AT LOW POINTS TO PREVENT FLUID FROM FREEZING.
5. ALL 4" PIPING IN TRENCHES SHALL HAVE 2 1/2" FIBERGLASS INSULATION.
OTHER INSULATION SHALL BE IN ACCORDANCE WITH OSS-0241.00-00-0004.
6. THE HEAT TRACED PIPING TEMPERATURE CAN APPROACH THE HIGH DESIGN TEMPERATURE DURING HOT WEATHER. AT THE FLOAT VALVES AND AT THE LOW POINTS, IF A TEMP. CONTROLLER ON THE LOW POINT HEAT TRACE FAILS, PIPING LOCATED INSIDE THE VACUUM BUILDING CAN REACH 125°F DURING HOT WEATHER WITH THE EXHAUST FANS OFF.
7. NORMAL OPERATING TEMPERATURE WILL BE APPROXIMATELY 20-30°F ABOVE LAKE WATER TEMPERATURE.

LINE NO.	DUKE CLASS	DESIGN PRESS.
1	F	35 PSIG
2	G	ATM
3	F	ATM

ERN: 0X00905W