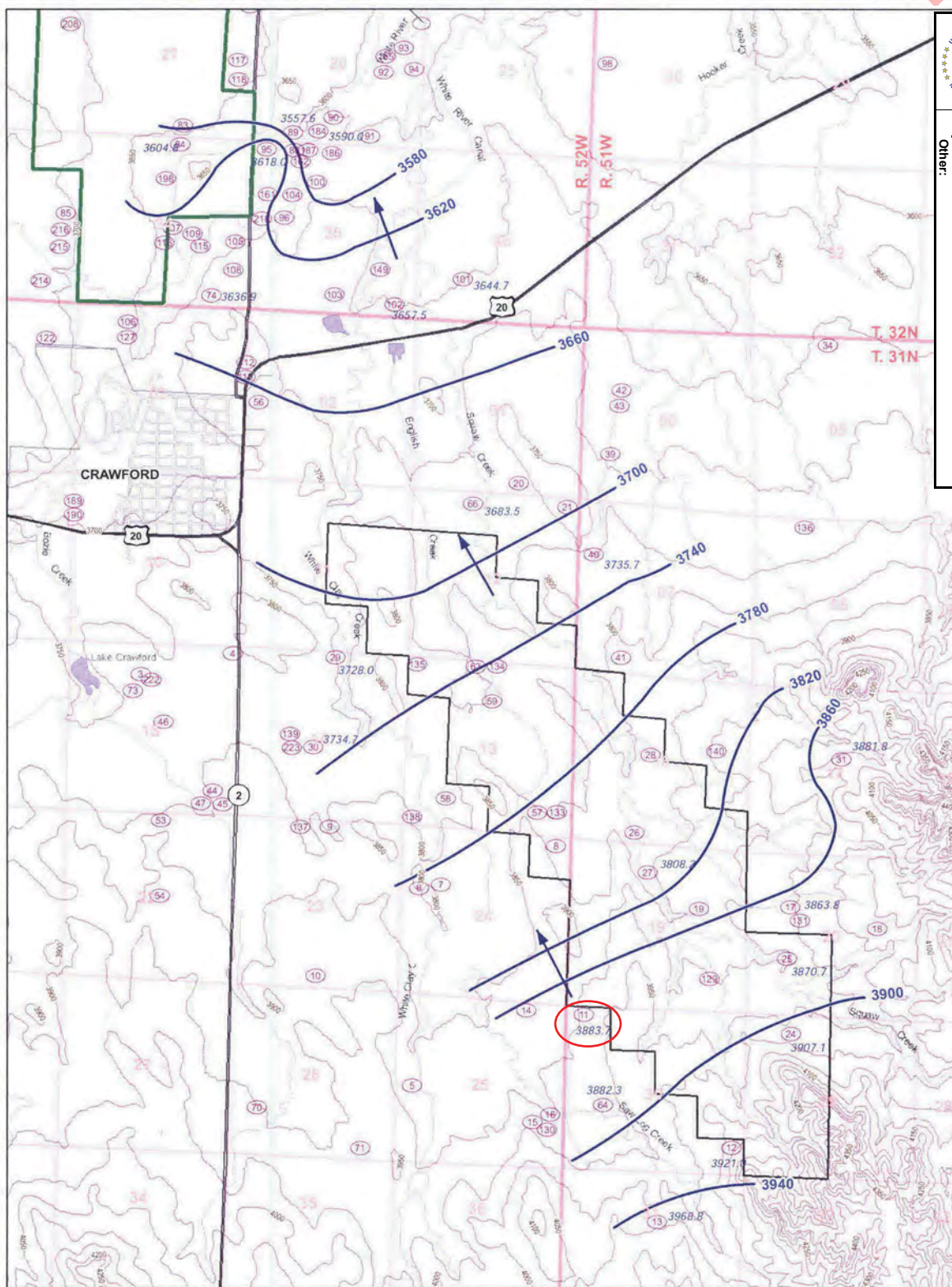




United States Nuclear Regulatory Commission Official Hearing Exhibit
In the Matter of:
 CROW BUTTE RESOURCES, INC.
 (License Renewal for the In Situ Leach Facility, Crawford, Nebraska)

ASLRP #: 08-867-02-OLA-BD01
Docket #: 0408943
Exhibit #: BRD-0084-00-BD01
Admitted: 9/4/2015
Rejected:
Other:

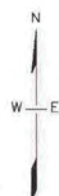
Identified: 8/26/2015
Withdrawn:
Stricken:



LEGEND

- Groundwater Elevation (Brule Formation, FT-AMSL)
- Elevation Contours (FT-AMSL, 40-Ft Interval)
- Brule Formation Water Well and Water Level Elevation (FT-AMSL)
- Proposed North Trend Expansion Area
- Class III Permit Boundary
- Groundwater Flow Direction

0 3,000 6,000
 Scale in Feet



**CROW BUTTE
 RESOURCES, INC.**

**FIGURE 2.7-3a
 REGIONAL WATER LEVEL MAP
 BRULE FORMATION 1982-1983**

PROJECT: CO001322 MAPPED: JC CHECKED: MS

FILE: CSA_Fig 2.7-3a_Regional_WL_Brule.mxd



630 Plaza Drive, Ste. 100
 Highlands Ranch, CO 80129
 P: 720-344-3500 F: 720-344-3535
 www.arcadis-us.com