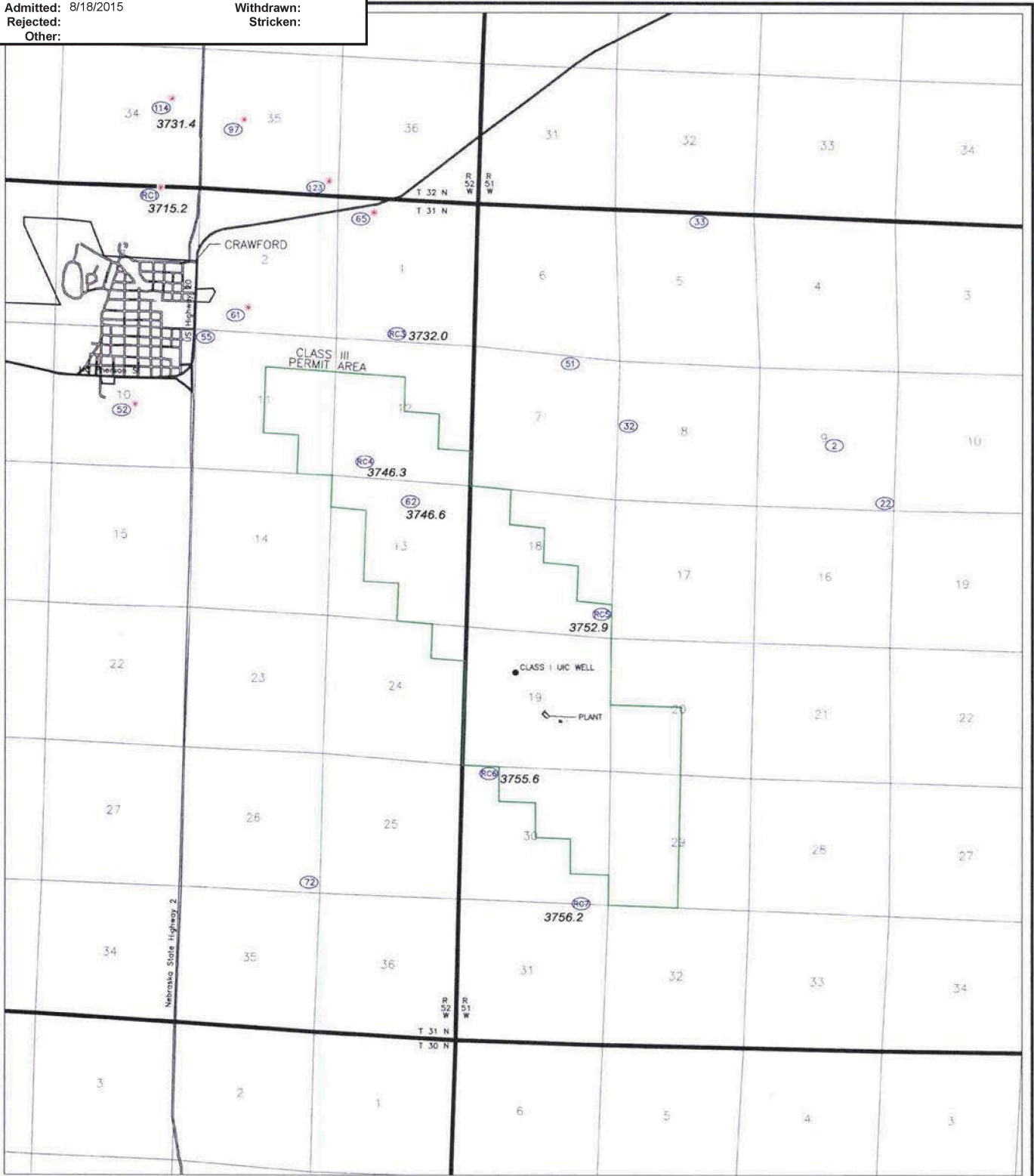


ASLBP #: 08-867-02-OLA-BD01
Docket #: 04008943
Exhibit #: NRC-058-00-BD01
Admitted: 8/18/2015
Rejected:
Other:
Identified: 8/18/2015
Withdrawn:
Stricken:



LEGEND

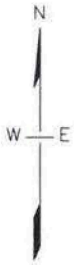
3756.2 Chadron Formation Water Level Elevation (ft-amsl)


Chadron Formation Artesian Well

Notes: Wells 52, 65, 114 and RC-3 have been abandoned.

0 0.5 1.0 2.0

SCALE IN FEET 1" = 1 MILE






CROW BUTTE RESOURCES, INC.

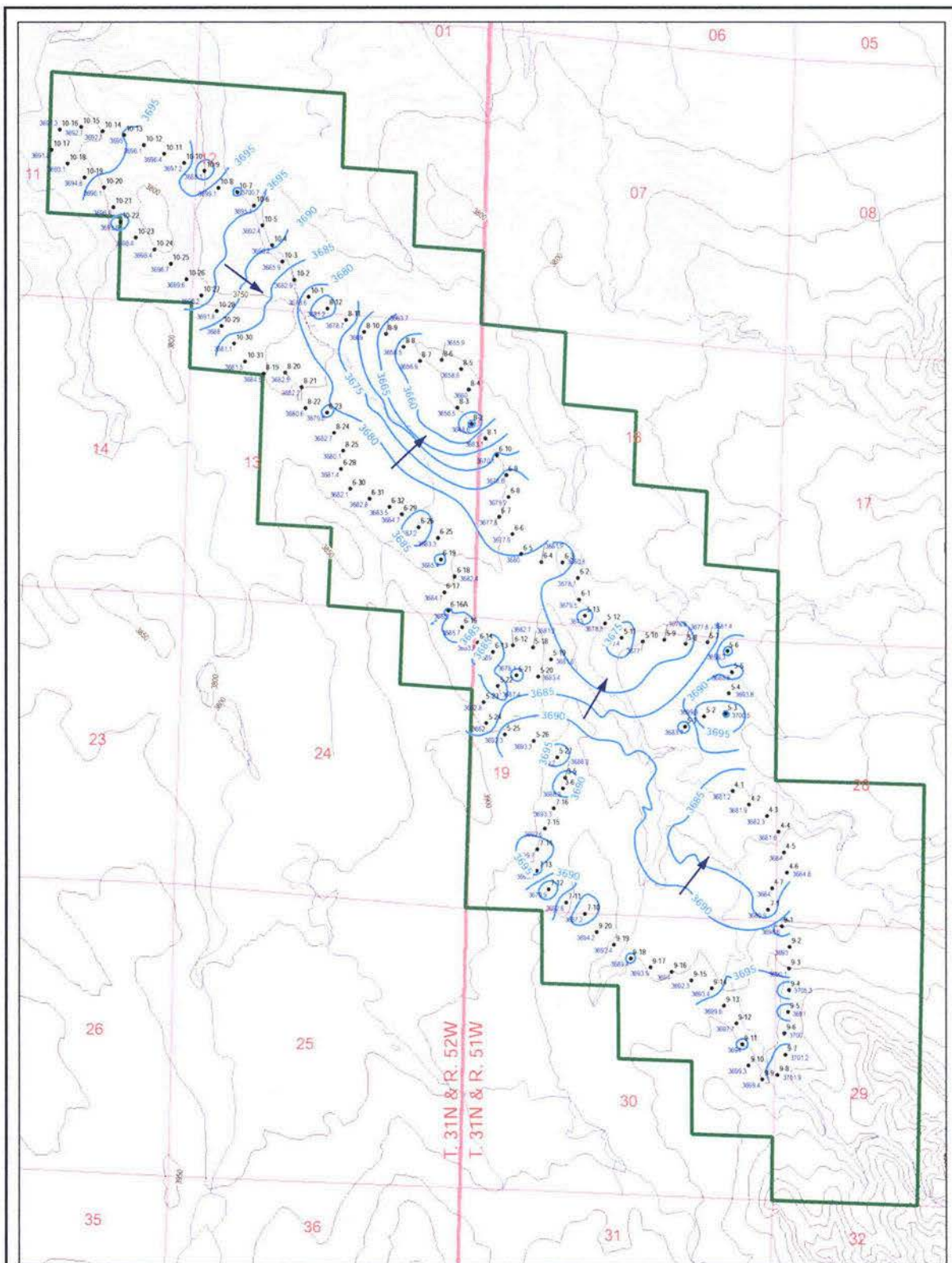
FIGURE 2.7-4a
REGIONAL WATER LEVEL MAP
BASAL CHADRON SANDSTONE 1982-1983

PROJECT: CO001322.0001 MAPPED: JC CHECKED: MS

FILE: CSA_FIGURE 2.7-4a REGIONAL WATER LEVEL_BCS.psd



ARCADIS
630 Plaza Drive, Ste. 100
Highlands Ranch, CO 80129
P: 303-344-3000 F: 303-344-3535
www.arcadis-us.com



LEGEND

- Well ID
- Basal Chadron Sandstone Water Well
- Groundwater Elevation (F.T.AMSL)
- Elevation Contours (F.T.AMSL)
- Groundwater Elevation Contour (5-FT Interval)
- Groundwater Elevation (F.T.AMSL)
- Stream or Canal
- Direction of Groundwater Flow

Class III Permit Boundary

0 1,500 3,000
Scale in Feet



CROW BUTTE
RESOURCES, INC.

FIGURE 2.7-4d
CURRENT LICENSE AREA
POTENTIOMETRIC SURFACE -
BASAL CHADRON SANDSTONE (2/23/09 - 3/5/09)

PROJECT: CO001322

MAPPED: JC

CHECKED: MS

FILE: CSA_BCS_POTENTIOMETRIC_0309.MXD

ARCADIS
Infrastructure, environment, buildings

630 Plaza Drive, Ste. 100
Highlands Ranch, CO 80129
P 720-344-3500 F 720-344-3535
www.arcadis-us.com