

| | |
|----------------------------------------------------------------------------------------------------------------------------------------------------------------------------------------------|--------------------------------------------------|
| United States Nuclear Regulatory Commission Official Hearing Exhibit In the Matter of: CROW BUTTE RESOURCES, INC. (License Renewal for the In Situ Leach Facility, Crawford, Nebraska) | |
| ASLBP #: 08-867-02-OLA-BD01 Docket #: 04008943 Exhibit #: NRC-054L-00-BD01 Admitted: 8/18/2015 Rejected: Other: | Identified: 8/18/2015 Withdrawn: Stricken: |



Figure 128. 25DW371, Feature F20, facing west. Photograph taken by Ashley Howder on 2/17/11.

Previously Recorded Sites

25DW00-243 (2368-S016)

Site 25DW00-243 is a historic homestead located in Section 7 T50W R29N, east and west of Hollibaugh Road (**Figures 130 and 153**). The Nebraska State Historic Preservation Office, in cooperation with the Nebraska State Historical Society, completed a historic building inventory of Dawes County in 2005 that identified the main farmhouse (Feature F2) as DW00-243, an abandoned house built circa 1890.

ARCADIS revisited the property in 2010 and recorded three houses (Features F1, F2, and F4), four outbuildings (Features F3, F5, F6, and F7), an orchard, a network of fenced animal enclosures, numerous abandoned farm implements, and one large debris pile. The site measures 1,225 feet by 455 feet and covers an area of 421,122 square feet. Vegetation across the property consists of sparse to moderate mixed grasses affording a bare ground visibility that varied between 70 to 100 percent across the site area. Sediments consist of silt sandy loam. Impacts to the site include historic ranching and farming activities throughout the area, vandalism, grazing, and wind and water erosion. The site datum is a GPS point taken from the southwest corner of Feature F1.

Cultural features include three houses (Features F1, F2, and F4), two storage sheds (Features F3 and F5), one livestock shelter (Feature F6), one foundation and chicken coop gate (Feature F7), an orchard, a network of fenced animal enclosures, numerous abandoned farm implements, five abandoned vehicles, two silos, and one large historic debris pile.

One small house (Feature F1) has a rectangular floor plan measuring 16 feet by 32 feet (**Figure 131**). Feature F1 has a metal roof, metal siding, a brick chimney, two rooms, a white enamel washing machine, and interior shelving. This small structure appears to have functioned as a house and a laundry shed. There are pieces of concrete from a foundation that surround the base of the house for landscaping purposes as opposed to supporting the structure. At the time of abandonment, the structure had electricity as evidenced by electrical outlets and light fixtures remaining in the structure.

The main farmhouse (Feature F2) is located on the east side of Hollibaugh Road and is a one and a half story front gable house with 6/6 windows, a four panel door, 4+ rooms, and an addition on the back or east side of structure (**Figure 132 and 133**). The farmhouse (Feature F2) has a rectangular floor plan that measures 36 feet by 18 feet, has composite and white horizontal wood siding, wide fascia board, and a rolled asphalt roof. The front door is accessed by way of a small wooden front porch that is in poor condition on the west face of the house and opens into a living room. Inside the main room is a curved stair case leading to the upper story (**Figure 132**). The upper story appears to have a finished interior. There is a lumber stamp reading "6-61" on the upper northwest corner of the south face of the house (**Figure 134**). At the time of abandonment, the house had electricity as evidenced by light fixtures and electrical appliances remaining in the structure. There are two outbuildings in the direct vicinity of the main farmhouse, a wood frame house that has been converted into a washing shed (Feature F1) 210 feet northeast and one side gable storage shed (Feature F3) 70 feet southwest. One 1953 Willys Overland pickup truck and several wagons are parked behind, or on the east side, the house (**Figure 135**).

The side gable storage shed (Feature F3) has a rectangular floor plan measuring 10 feet by 16 feet (**Figure 136**). Feature F3 has a wood frame construction, unpainted horizontal siding, a narrow door, and two small upper windows on the southern face. The side gable shed is adjacent and north of the orchard. The orchard

is rectangular in shape and measures 141 feet by 118 feet, and was planted directly north of the second farmhouse (Feature F4) (**Figure 137**).

The second farmhouse (Feature F4) is an unpainted, one story, side gable house in considerably poorer condition than the main farmhouse (**Figure 138**). The original floor plan was relatively square, measuring 25 feet by 32 feet. The front of the house (e.g. the eave line and door) faces the east toward the unpaved driveway and away from Hollibaugh Road (**Figure 139**). A sizeable side gable porch measuring 8 feet by 24 feet has been added to the front of the house, and is structurally unstable thus preventing entry. The horizontal wooden siding and wooden shingles are unpainted. The house contains 3+ rooms and a dirt crawl space used for storage (**Figure 140**). The crawl space is filled with abandoned furniture, including one chair, shelves, drawers, and a table. At the time of abandonment, the structure had electricity as evidenced by electrical outlets and light fixtures remaining in the structure. A wood paneled flatbed trailer is parked in the dirt road directly behind the house. One foundation and standing chicken coop gate (Feature F7) is located 62 feet northeast. There is one white side gable shed (Feature F5) 102 feet southeast of the farmhouse (Feature F4).

The white side gable shed (Feature F5) has a rectangular floor plan and measures 16 feet by 10 feet (**Figure 141**). The shed (Feature F5) has white painted horizontal wood siding, a wood plank roof, and a small door and small window on the south face of the structure. There is a small metal stock tank directly adjacent to the south face of the shed. The structure (Feature F5) may have been used for storage or as a livestock shelter. There is one red livestock shed (Feature F6) 189 feet east of the white side gable shed (Feature F5).

One animal shed (Feature F6) located 189 feet east of the white side gable shed is located within a network of fenced animal enclosures (**Figure 142**). The animal shed (Feature F6) has a rectangular floor plan, measures 20 feet by 12 feet, a wood frame construction, and was originally painted cherry red. The shed (Feature F6) has a wide, wood plank door on the east face of the structure. There are four squat windows on the south face of the structure and one window on the west face.

One remnant foundation (Feature F7) located 30 feet north of a standing chicken coop gate is located east of farmhouse (Feature F4) and measures approximately 23 feet by 23 feet (**Figure 143**). Foundation (Feature F7) appears razed and is in poor condition.

Two historic debris piles are located on the south side of the dirt road behind the farmhouses (Features F2 and F4) and chicken coop (Feature F7) (**Figure 144**). The debris piles contain scrap metal, wood remnants, tires, and other household and farm debris. The main debris pile is considerably larger and contains two Perfection cooking stoves. There are wagons, automobile and farm machinery, and household items scattered across the site area (**Figure 145**).

There is a dirt road that runs generally parallel to Hollibaugh Road behind the farmhouses (Features F2 and F4) and up the hill 253 feet to the south connecting this property with previously recorded site DW00-242 (B. Chapman House) (**Figure 153**). In addition to the structures and associated features and debris on the east side of Hollibaugh Road, there are two sheet metal grain silos and a large historic mechanical machinery debris scatter located on the west side of Hollibaugh Road that were recorded as part of historic homestead site 25DW00-243 (**Figure 146**). This large scatter measures 505 feet by 234 feet and covers an area of 1,335 square feet. Cultural materials consist of 50+ large farm implements and 50+ scrap metal parts and fragments. Diagnostic artifacts include a 1954 Ford flatbed truck with a 1976 Nebraska license plate (**Figure**

147), a 1951 Ford Victoria car (**Figure 148**), a Gleaner Baldwin Model "R" combine manufactured from 1929 to 1935 (**Figure 149**), a John Deere 2-row Lister corn planter first manufactured in 1928 and popular in the 1930s for erosion control (**Figure 150**) (William Lee, South Dakota State Agricultural Heritage Museum Exhibits/Restoration, personal communication 2011), a dump rake of unknown manufacture from the 1910s to 1920s (**Figure 151**) (William Lee, South Dakota State Agricultural Heritage Museum Exhibits/Restoration, personal communication 2011), and three early electric washing machines of unknown manufacture from the late 1920s to the early 1950s (**Figure 152**). Some debris has been washed down-slope into a steep large drainage to the north of the site area.

Historic homestead site 25DW00-243 was probably occupied from the late 1800s through the mid-1900s. This historic homestead consists of features and debris commonly recorded in the area, but the National Register criteria does not dismiss resources as insignificant simply because there are numerous examples of the type. National Register eligibility for any property, including historic period archeological sites, depends on integrity and significance. Integrity for a historic period archaeological site is based on the presence of features and whether or not they can tell us something about the location. Site 25DW00-243 is an early historic homestead with multiple features that are in poor physical condition but do retain integrity in that they are informative about early farming and ranching strategies in northwestern Nebraska. Significance was assessed following intensive survey and a historic records search that included a files search and architectural/structures property search conducted through the Nebraska SHPO; review of the National Register of Historic Places (NRHP) database for Dawes County, Nebraska; review of the National Historic Landmark inventory (NHL); review of General Land Office (GLO) Plats; and local literature review; that revealed sustained Euro-American historic occupation in this area occurred between 1890 to present day, and no leases or purchasers were found that can be associated with an important person or persons of "significance in history" or having an uncommon ethnic affiliation. Finally, the features associated with site 25DW00-243 lack a unique design and any other unusual physical characteristic. Therefore, site 25DW00-243 does not possess enough significance to qualify for the National Register. Site 25DW00-243 is a common historic site associated with historic and early modern ranching or farming activities in the region that ARCADIS recommends **not eligible for listing on the NRHP and no further work is necessary**. ARCADIS believes historic homestead site 25DW00-243 has numerous features with associated artifacts that could reveal more complex and in-depth temporal contexts and spatial extents to provide meaningful data that would address more important research questions and recommends Cameco Resources avoid all construction activities within 200 feet of the 25DW00-243 site boundary.



Figure 130. 25DW00-243, overview, facing southeast. Photograph taken by Ashley Howder on 12/05/101.

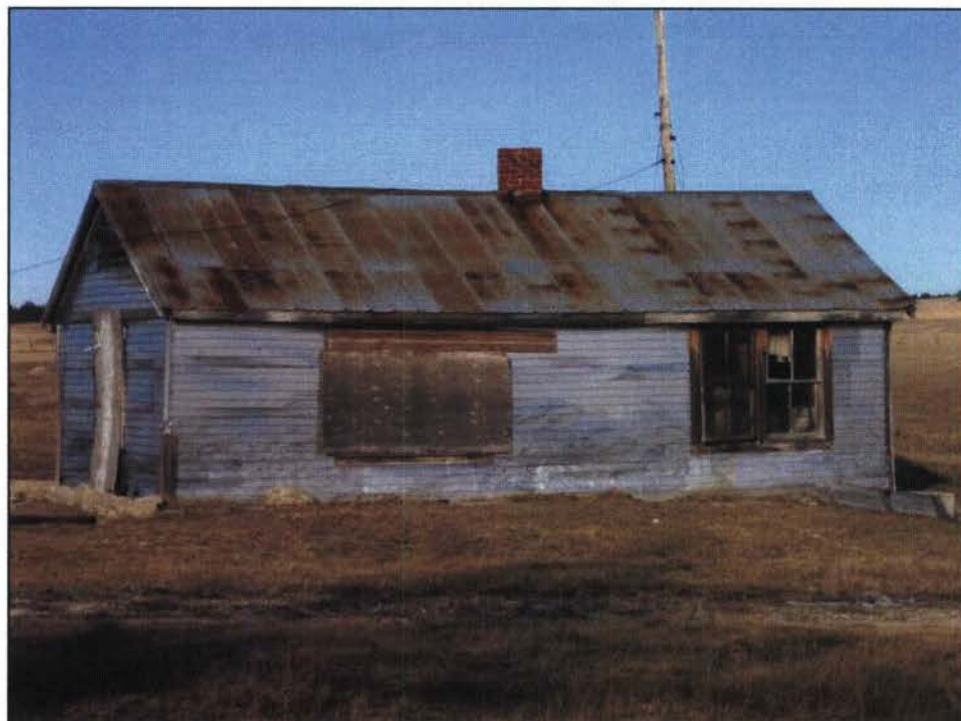


Figure 131. 25DW00-243, house (Feature F1), facing northeast. Photograph taken by Ashley Howder, on 12/05/2010.



Figure 132. 25DW00-243, house (Feature F2), facing east. Photograph taken by Ashley Howder, on 12/05/2010.

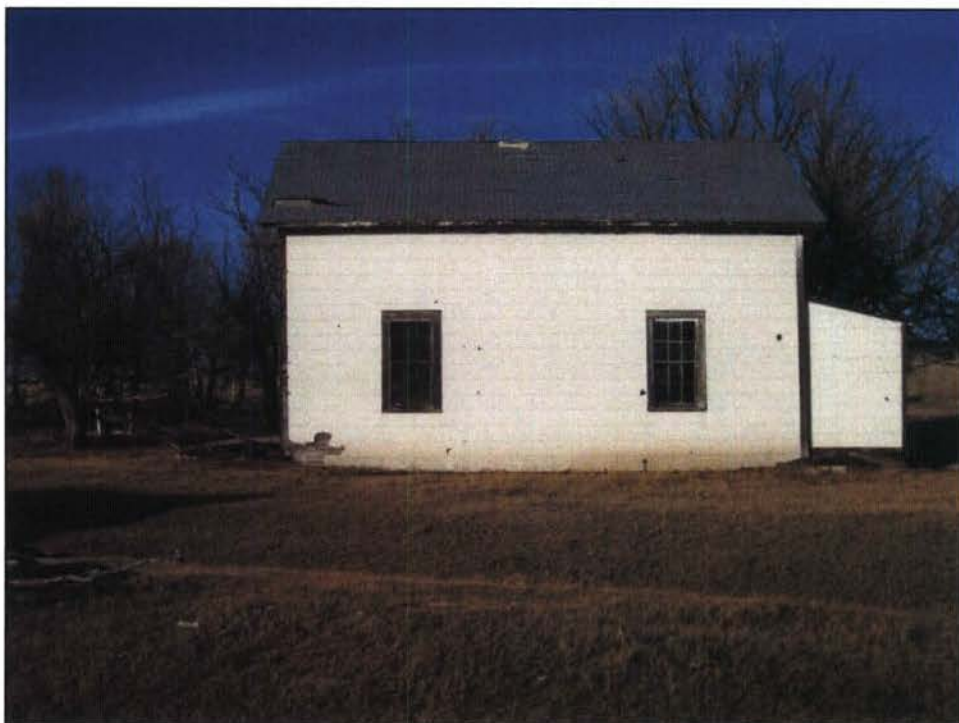


Figure 133. 25DW00-243, south face of main house (Feature F2) showing shed roof addition, 6/6 windows, siding, and asphalt roof, facing north. Photograph taken by Ashley Howder, on 12/05/2010.



Figure 134. 25DW00-243, south face of main house (Feature F2) showing lumber stamp "6-61", facing north. Photograph taken by Ashley Howder, on 12/05/2010.

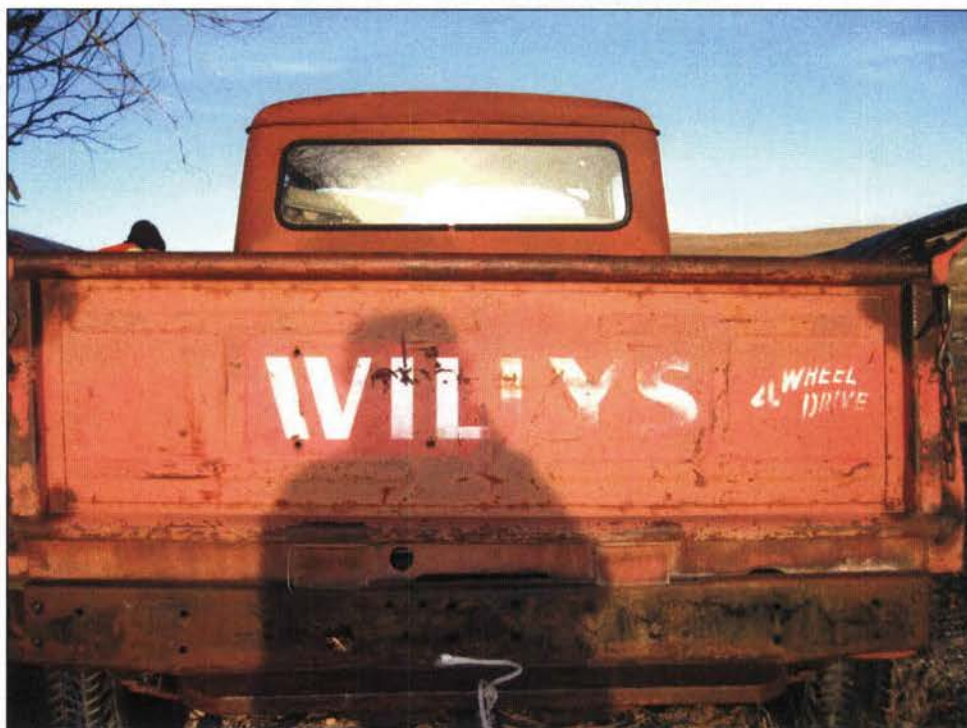


Figure 135. 25DW00-243, 1953 Willys Overland pickup truck, facing northeast. Photograph taken by Ashley Howder, on 12/05/2010.



Figure 136. 25DW00-243, side gable shed (Feature 3) near main farm house, facing northwest. Photograph taken by Ashley Howder, on 12/05/2010.



Figure 137. 25DW00-243, orchard, facing southeast. Photograph taken by Ashley Howder, on 12/05/2010.



Figure 138. 25DW00-243, farmhouse (Feature F4) showing the north and west faces of the structure, facing southeast. Photograph taken by Ashley Howder, on 12/05/2010.



Figure 139. 25DW00-243, farmhouse (Feature F4) showing front porch, facing northwest. Photograph taken by Ashley Howder, on 12/05/2010.



Figure 140. 25DW00-243, crawl space beneath farmhouse (Feature F4), facing south. Photograph taken by Ashley Howder, on 12/05/2010.



Figure 141. 25DW00-243, white side gable shed (Feature F5), facing northeast. Photograph taken by Ashley Howder, on 12/05/2010.



Figure 142. 25DW00-243, animal shed (Feature F6) with fencing in background, facing southeast. Photograph taken by Ashley Howder, on 12/05/2010.



Figure 143. 25DW00-243, chicken coop gate and foundation (Feature F7) with Feature F5 and Feature F4 in the background, facing west. Photograph taken by Ashley Howder, on 12/05/2010.