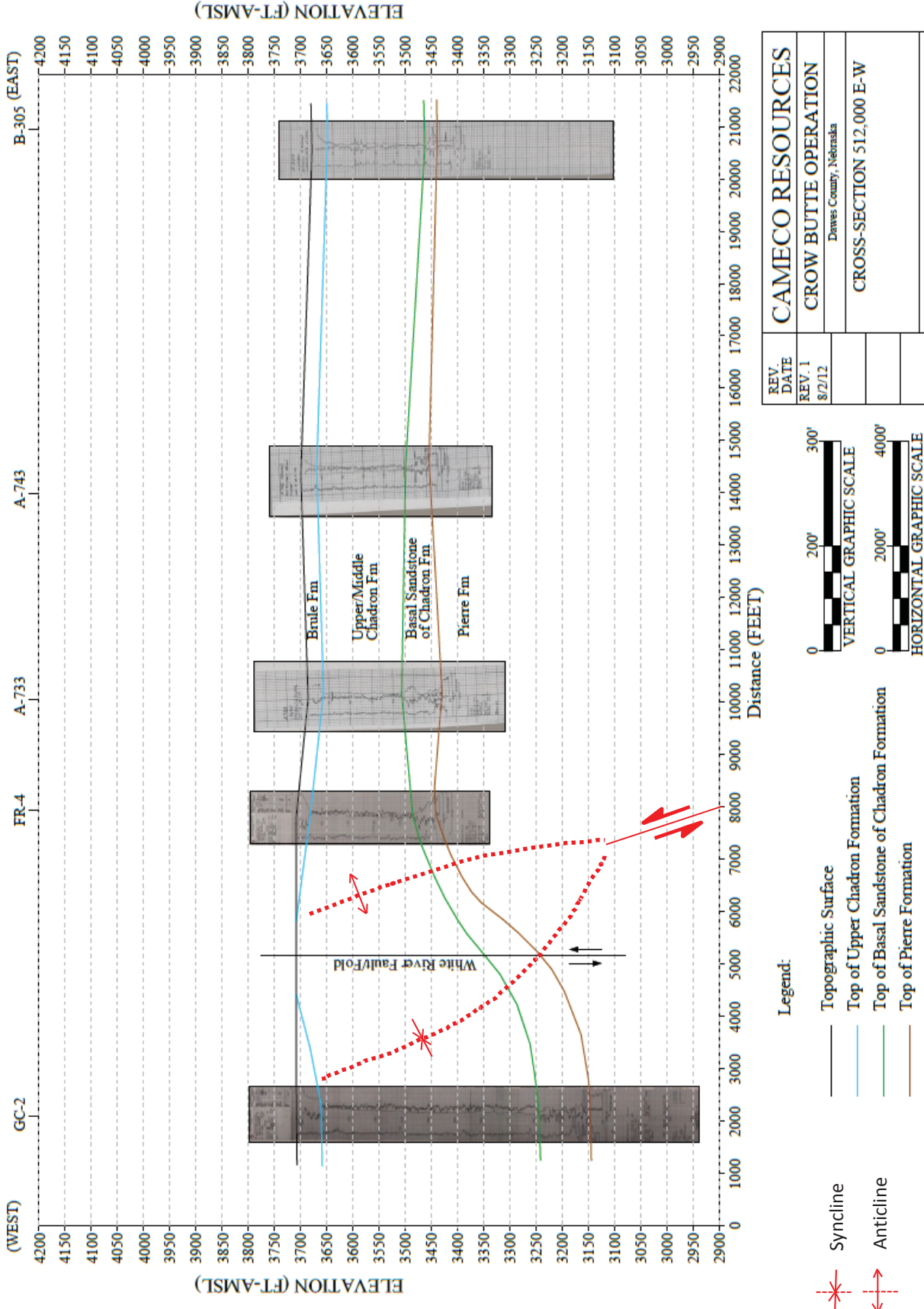


FIGURE 2.6-4 Cross Section 512,000 E-W



REV.	DATE	CAMECO RESOURCES
REV. 1	8/2/12	CROW BUTTE OPERATION
		Dawes County, Nebraska
		CROSS-SECTION 512,000 E-W
		FIGURE 2.6-4
		Prepared by: CBO
		Drawn by: Wade Bains



United States Nuclear Regulatory Commission Official Hearing Exhibit
In the Matter of:
CROW BUTTE RESOURCES, INC.
(License Renewal for the In Situ Leach Facility, Crawford, Nebraska)

ASLBP #: 08-867-02-OLA-BD01
Docket #: 04008943
Exhibit #: CBR-026-00-BD01
Admitted: 8/18/2015
Rejected:
Other:

Identified: 8/18/2015
Withdrawn:
Stricken: