

United States Nuclear Regulatory Commission Official Hearing Exhibit

CROW BUTTE RESOURCES, INC.

(License Renewal for the In Situ Leach Facility, Crawford, Nebraska)

In the Matter of:

ASLBP #: 08-867-02-OLA-BD01

Docket #: 04008943

Exhibit #: CBR-024-00-BD01

Admitted: 8/18/2015

Rejected:

Stricken:

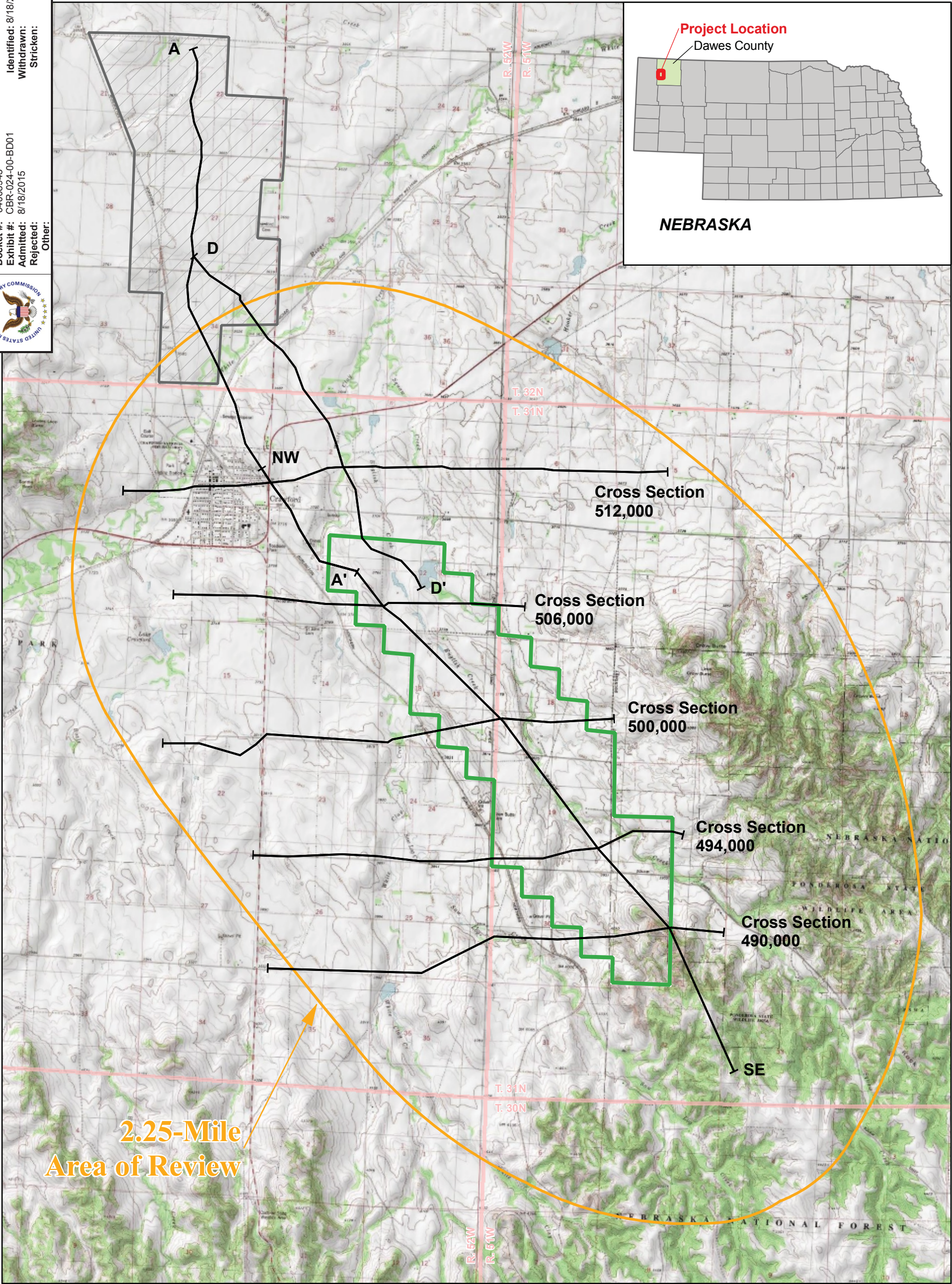
Other:

Identified: 8/18/2015





Withdrawn:

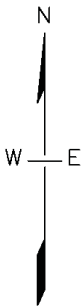
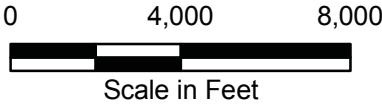
Stricken:





LEGEND

-  Cross Section
-  Class III Permit Boundary
-  Proposed North Trend Expansion Area
-  2.25-Mile CSA Area of Review



CROW BUTTE  
RESOURCES, INC.

FIGURE 2.6-3  
CROSS SECTION LOCATION

PROJECT: CO001322    MAPPED: JC    CHECKED: MS  
FILE: Figure 2.6-3\_XSLocation.mxd @ 04/09/2009

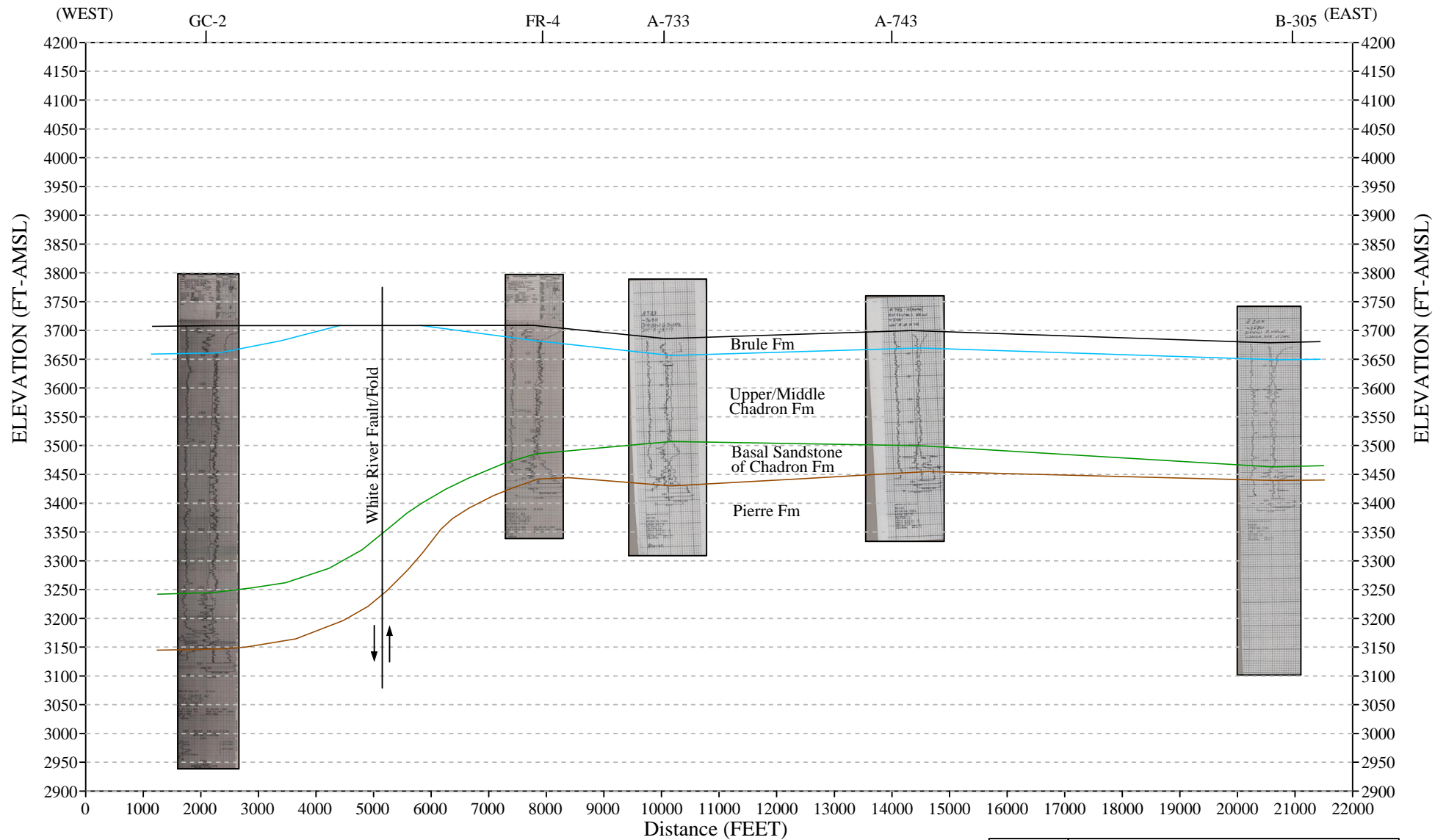


630 Plaza Drive, Ste. 100  
Highlands Ranch, CO 80129  
P: 720-344-3500 F: 720-344-3535  
www.arcadis-us.com



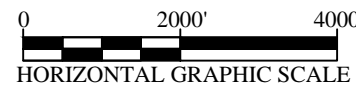
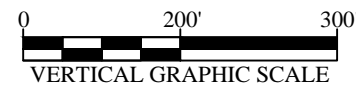
# FIGURE 2.6-4 Cross Section 512,000 E-W

CBR-024



Legend:

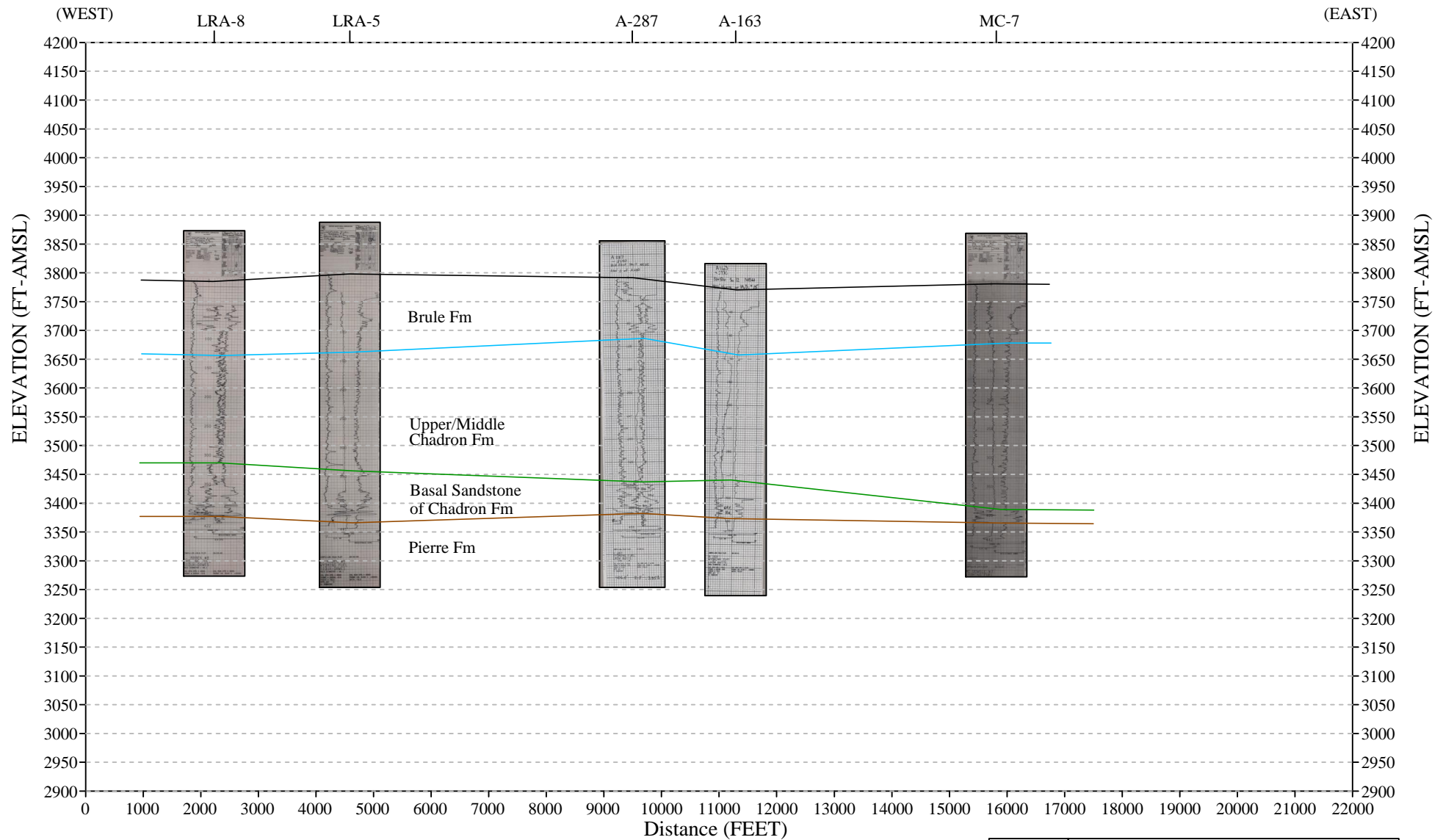
- Topographic Surface
- Top of Upper Chadron Formation
- Top of Basal Sandstone of Chadron Formation
- Top of Pierre Formation



REV. DATE	<b>CAMECO RESOURCES</b>
REV. 1 8/2/12	<b>CROW BUTTE OPERATION</b>
	Dawes County, Nebraska
	<b>CROSS-SECTION 512,000 E-W</b>
	<b>FIGURE 2.6-4</b>
	Prepared by: CBO Drawn by: Wade Beins

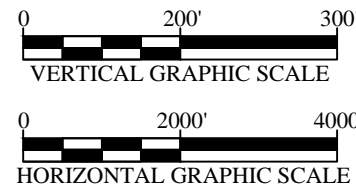
# FIGURE 2.6-5 Cross Section 506,000 E-W

CBR-024



Legend:

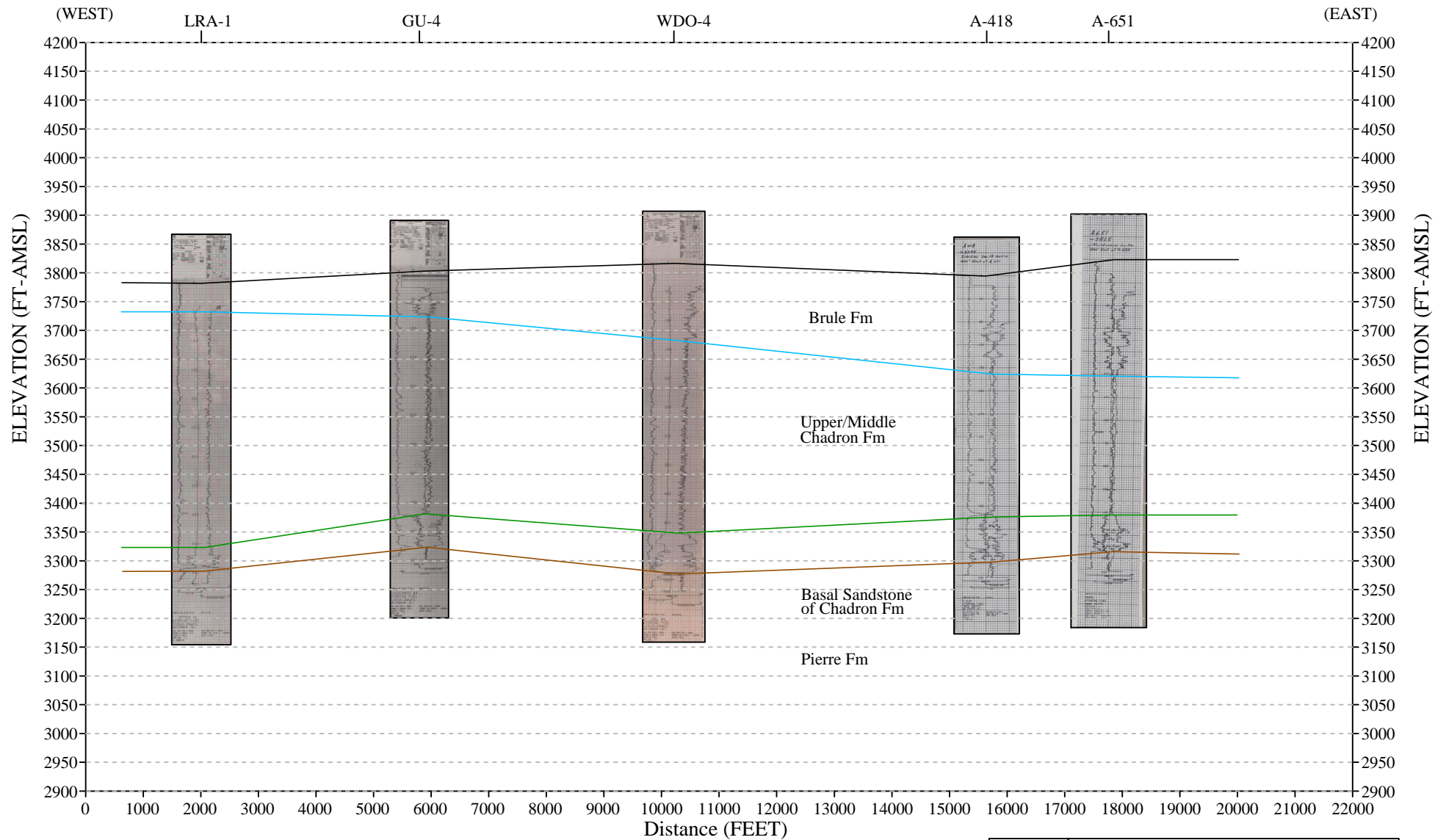
- Topographic Surface
- Top of Upper Chadron Formation
- Top of Basal Sandstone of Chadron Formation
- Top of Pierre Formation



REV. DATE	<b>CAMECO RESOURCES</b>
REV. 1 8/2/12	<b>CROW BUTTE OPERATION</b>
	Dawes County, Nebraska
	<b>CROSS-SECTION 506,000 E-W</b>
	<b>FIGURE 2.6-5</b>
	Prepared by: CBO Drawn by: Wade Beins

# FIGURE 2.6-6 Cross Section 500,000 E-W

CBR-024



Legend:

- Topographic Surface
- Top of Upper Chadron Formation
- Top of Basal Sandstone of Chadron Formation
- Top of Pierre Formation

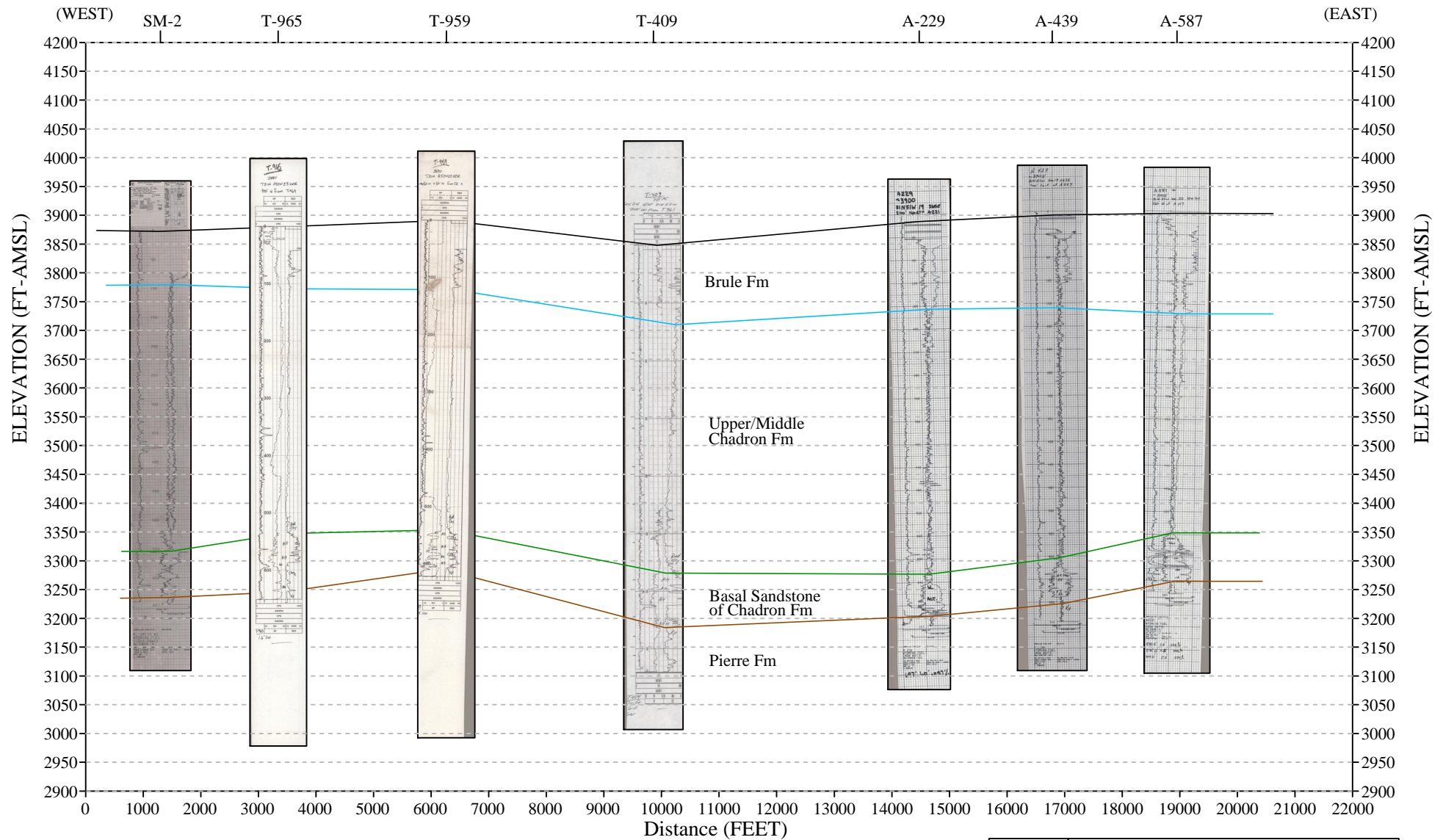
0 200' 300'  
VERTICAL GRAPHIC SCALE

0 2000' 4000'  
HORIZONTAL GRAPHIC SCALE

REV. DATE	CAMECO RESOURCES
REV. 1 8/2/12	CROW BUTTE OPERATION
	Dawes County, Nebraska
	CROSS-SECTION 500,000 E-W
	FIGURE 2.6-6
	Prepared by: CBO Drawn by: Wade Beins

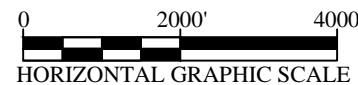
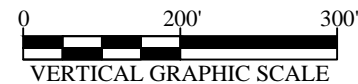
# FIGURE 2.6-7 Cross Section 494,000 E-W

CBR-024



## Legend:

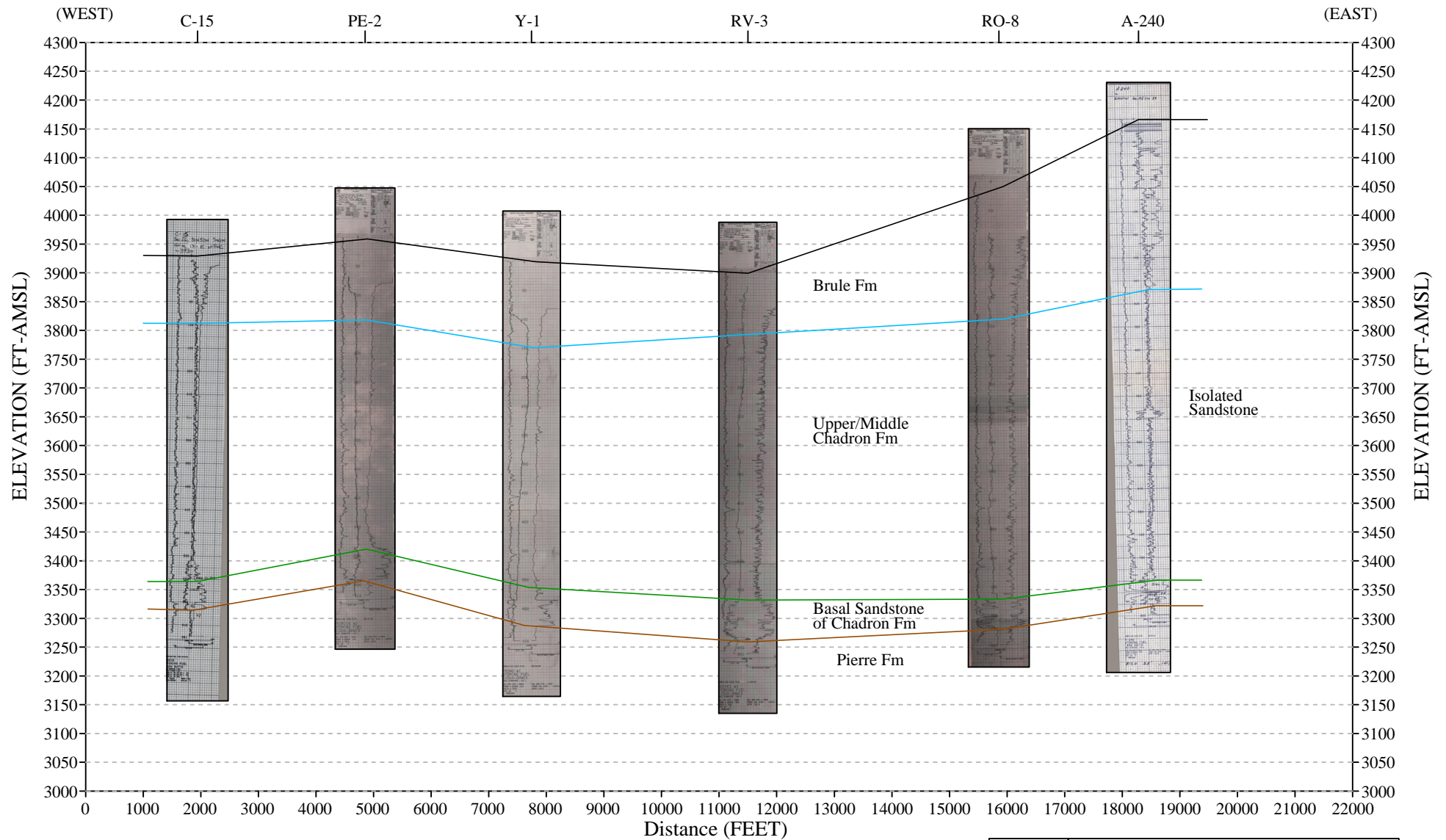
- Topographic Surface
- Top of Upper Chadron Formation
- Top of Basal Sandstone of Chadron Formation
- Top of Pierre Formation



REV. DATE	<b>CAMECO RESOURCES</b>
REV. 1 8/2/12	<b>CROW BUTTE OPERATION</b>
	Dawes County, Nebraska
	<b>CROSS-SECTION 494,000 E-W</b>
	<b>FIGURE 2.6-7</b>
	Prepared by: CBO Drawn by: Wade Beins

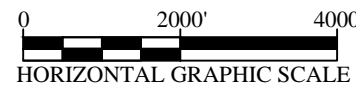
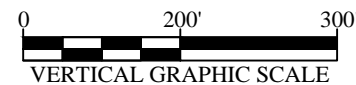
# FIGURE 2.6-8 Cross Section 490,000 E-W

CBR-024



## Legend:

- Topographic Surface
- Top of Upper Chadron Formation
- Top of Basal Sandstone of Chadron Formation
- Top of Pierre Formation



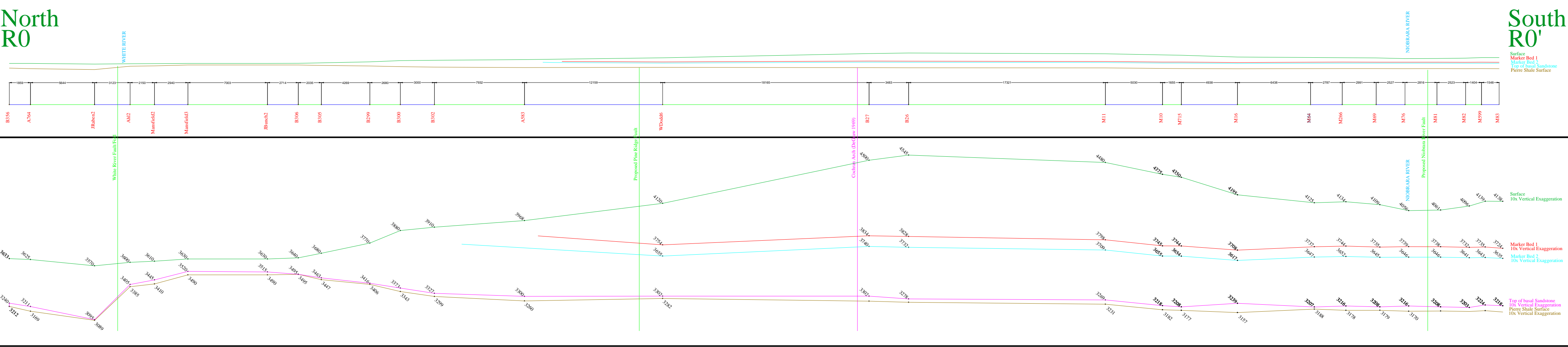
REV. DATE	<b>CAMECO RESOURCES</b>
REV. 1 8/2/12	<b>CROW BUTTE OPERATION</b>
	Dawes County, Nebraska
	<b>CROSS-SECTION 490,000 E-W</b>
	<b>FIGURE 2.6-8</b>
	Prepared by: CBO Drawn by: Wade Beins



# CRAWFORD BASIN GEOLOGIC STRUCTURE

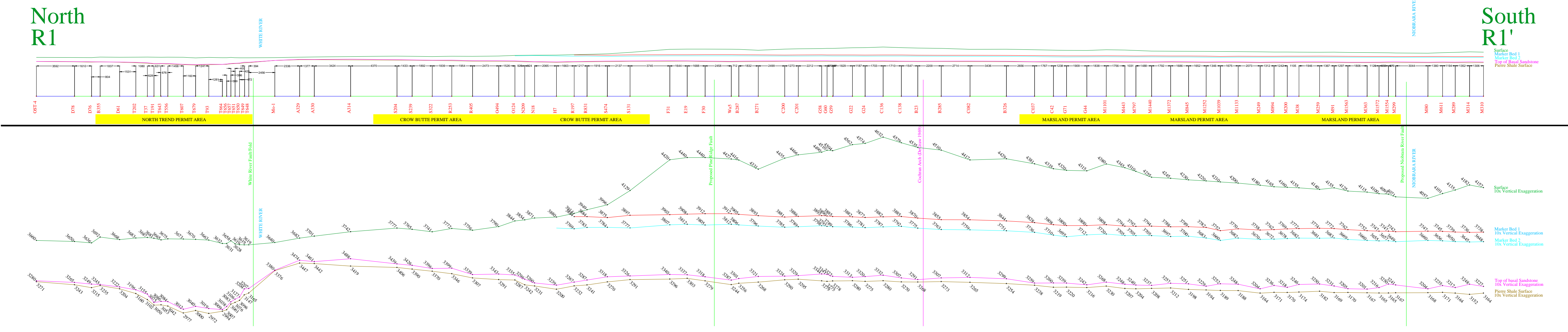
Regional incline S-N = 1.24 degrees

## CROSS-SECTION R0 - R0'



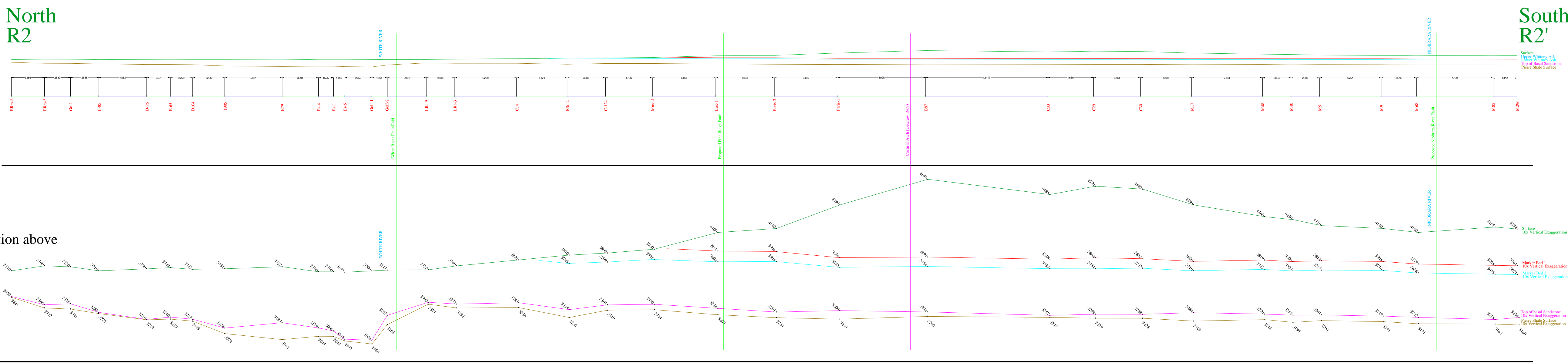
Picks show surface elevation above Mean Sea Level

## CROSS-SECTION R1 - R1'



Picks show surface elevation above Mean Sea Level

## CROSS-SECTION R2 - R2'



Picks show surface elevation above Mean Sea Level

## THREE CROW AREA CROSS-SECTIONS

(As shown in TCEA License Application)  
Picks show surface elevation above Mean Sea Level

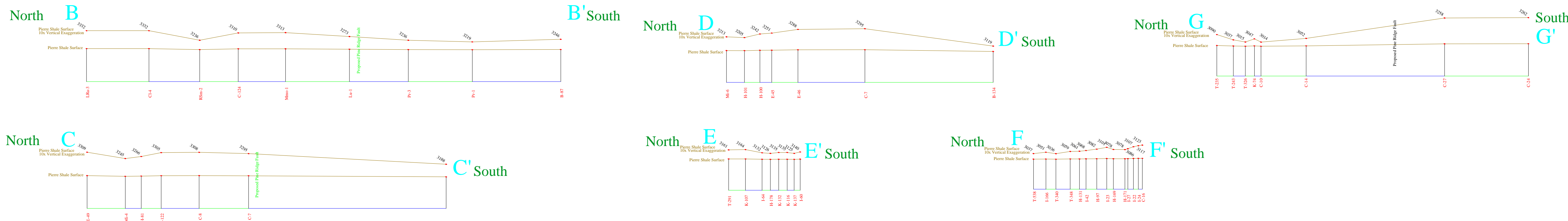


Figure 3



Figure 3