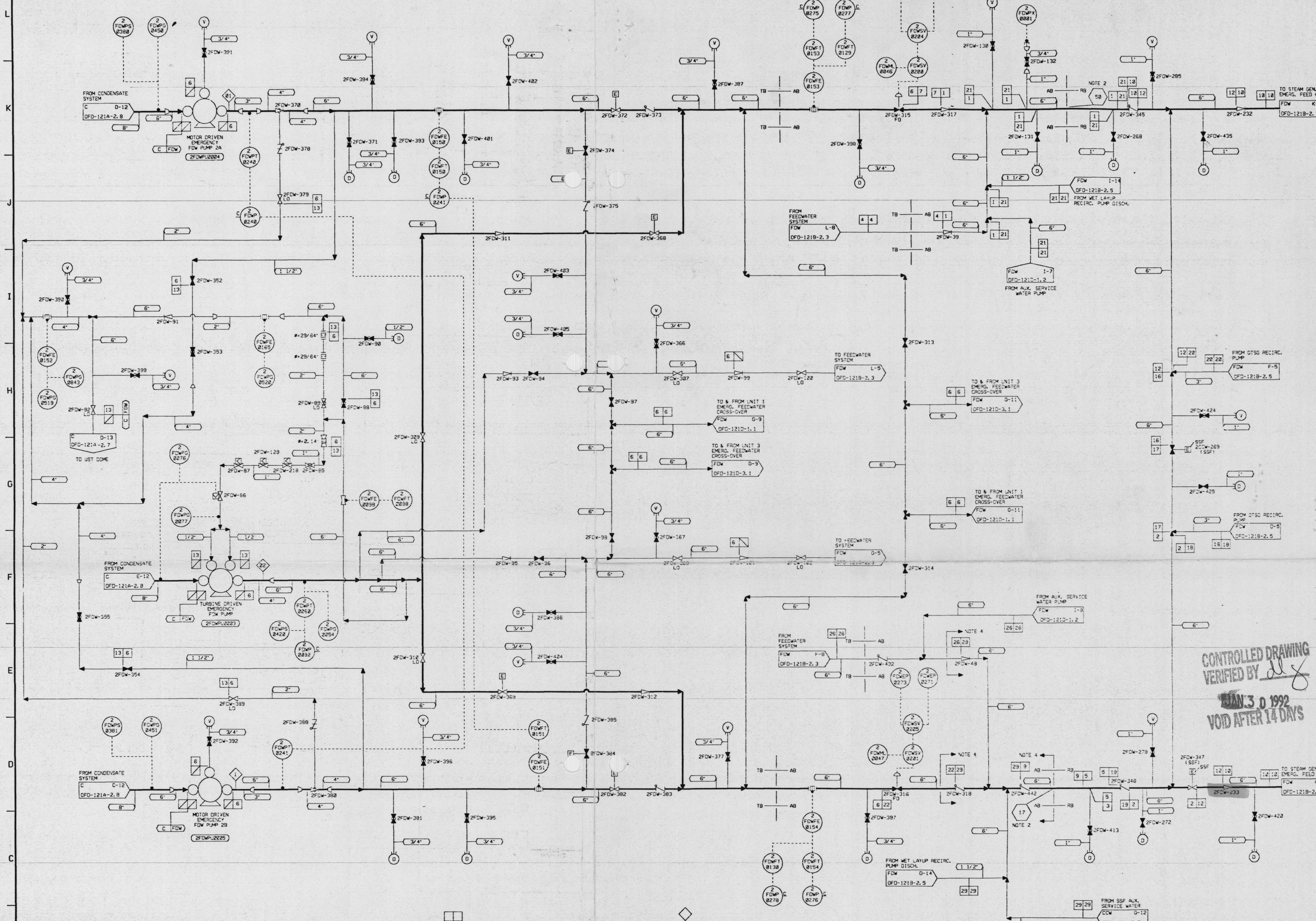


OVERSIZE DOCUMENT PAGE PULLED

SEE APERTURE CARDS

NUMBER OF OVERSIZE PAGES FILMED ON APERTURE CARDS 1

**APERTURE CARD/HARD COPY AVAILABLE FROM
RECORDS AND REPORTS MANAGEMENT BRANCH**



NOTES:

- OPERATING MODE REPRESENTED BY BOLD LINES. EMERGENCY FEEDWATER TO STEAM GENERATORS. VALVE POSITIONS ARE FOR NORMAL PLANT OPERATION.
- FOR DETAIL OF TRANSITION, REFER TO D-1439C.
- THE ORIGINAL ISSUE OF THIS DRAWING IS BASED ON PD-1210-2, REV. 6.
- GUARD PIPE AND VALVE ENCLOSURE COMPONENTS TO PROVIDE SECURITY BOUNDARY.
- 1 1/2" THRU 2" - SCH. 40
- 2 1/2" THRU 6" - SCH. 80
- 6" THRU 14" - SCH. 160
- 1440 PSIG - 60°F
- 1420 PSIG - 150°F
- 1275 PSIG - 475°F
- 1050 PSIG - 620°F
- 1440 PSIG - 60°F
- 1420 PSIG - 150°F
- 1275 PSIG - 475°F
- 1050 PSIG - 620°F
- 1440 PSIG - 60°F
- 1420 PSIG - 150°F
- 1275 PSIG - 475°F
- 1050 PSIG - 620°F
- PER DES. CALD. 4850 PIPING FROM DISCHARGE OF MDEFW PUMPS THROUGH 2FDW-372, 374, 382, 384, & 92 MAY BE UP TO 1680 PSIG FOR 3 HRS.

DESIGN PARAMETERS

LINE NO.	DUKE CLASS	DESIGN PRESS.	DESIGN TEMP.	MATERIAL	PIPE SPEC. NO.	PIPE CL. NO.	IS1 CLASS
1	F	1050 PSIG	475°F	CS	680.4	1/2" THRU 24" - SCH. 80	B
2	F	NOTE 6	NOTE 6	CS	680.4	1/2" THRU 24" - SCH. 80	B
3	F	NOTE 7	NOTE 7	CS	680.4	1/2" THRU 24" - SCH. 80	B
4	F	1050 PSIG	475°F	CS	680.4	1/2" THRU 24" - SCH. 80	B
5	F	NOTE 7	NOTE 7	CS	680.4	1/2" THRU 24" - SCH. 80	B
6	F	1420 PSIG (NOTE 10)	150°F	CS	680.4	1/2" THRU 24" - SCH. 80	B
7	F	1250 PSIG	150°F	CS	680.4	1/2" THRU 24" - SCH. 80	B
8	F	NOTE 7	NOTE 7	CS	680.4	1/2" THRU 24" - SCH. 80	B
9	F	1050 PSIG	620°F	CS	680.4	1/2" THRU 24" - SCH. 80	B
10	F	1250 PSIG	620°F	CS	680.4	1/2" THRU 24" - SCH. 80	B
11	F	1050 PSIG	620°F	CS	680.4	1/2" THRU 24" - SCH. 80	B
12	F	1420 PSIG	620°F	CS	680.4	1/2" THRU 24" - SCH. 80	B
13	F	1440 PSIG	60°F	CS	680.4	1/2" THRU 24" - SCH. 80	B
14	C	1420 PSIG	60°F	CS	680.4	1/2" THRU 24" - SCH. 80	B
15	B	1050 PSIG	620°F	CS	680.4	1/2" THRU 24" - SCH. 80	B
16	B	NOTE 6	NOTE 6	CS	680.4	1/2" THRU 24" - SCH. 80	B
17	B	NOTE 6	NOTE 6	CS	680.4	1/2" THRU 24" - SCH. 80	B
18	F	NOTE 6	NOTE 6	CS	680.4	1/2" THRU 24" - SCH. 80	B
19	F	NOTE 6	NOTE 6	CS	680.4	1/2" THRU 24" - SCH. 80	B
20	F	1050 PSIG	620°F	CS	680.4	1/2" THRU 24" - SCH. 80	B
21	F	NOTE 9	NOTE 9	CS	680.4	1/2" THRU 24" - SCH. 80	B
22	F	NOTE 9	NOTE 9	CS	680.4	1/2" THRU 24" - SCH. 80	B
23	F	NOTE 9	NOTE 9	CS	680.4	1/2" THRU 24" - SCH. 80	B
24	F	NOTE 7	NOTE 7	CS	680.4	1/2" THRU 24" - SCH. 160	C

DESIGN FLOW

NO.	FLOW
1	500 GPM
2	1000 GPM

SI APERTURE CARD

9202190279

SSF RELATED

Q. A. CONDITION 1

DUKE POWER COMPANY

OCONEE NUCLEAR STATION UNIT 2

FLOW DIAGRAM OF

EMERGENCY FEEDWATER

SYSTEM

REV.	PER	DATE	BY	CHKD	DATE	APPR	DATE	CIVIL	ELEC	MECH	INSPECTED
9	REV. PER OE-4204	8/28/93	7/3/94	1/1/94	1/1/94	1/1/94	1/1/94	1/1/94	1/1/94	1/1/94	1/1/94
7	NSM ON-22658/20 (IMP 10-22-90)	10/23/90	10/23/90	10/23/90	10/23/90	10/23/90	10/23/90	10/23/90	10/23/90	10/23/90	10/23/90
6	RECAPTION FOR DOW. RESTORATION	10/23/90	10/23/90	10/23/90	10/23/90	10/23/90	10/23/90	10/23/90	10/23/90	10/23/90	10/23/90
5	ORIG. DRAWING RETIRED	10/23/90	10/23/90	10/23/90	10/23/90	10/23/90	10/23/90	10/23/90	10/23/90	10/23/90	10/23/90

NO.

REVISIONS

DRN

DATE

CHKD

DATE

APPR

DATE

CIVIL

ELEC

MECH

INSPECTED

DESIGNER

DATE

INSR.

DATE

APPR.

DATE

SCALE

DWG. NO.

9202190279