

PRIORITY 1

(ACCELERATED RIDS PROCESSING)

REGULATORY INFORMATION DISTRIBUTION SYSTEM (RIDS)

ACCESSION NBR: 9510170231 DOC. DATE: 95/10/05 NOTARIZED: NO DOCKET #
FACIL: 50-269 Oconee Nuclear Station, Unit 1, Duke Power Co. 05000269
50-270 Oconee Nuclear Station, Unit 2, Duke Power Co. 05000270
50-287 Oconee Nuclear Station, Unit 3, Duke Power Co. 05000287
AUTH. NAME AUTHOR AFFILIATION
HAMPTON, J.W. Duke Power Co.
RECIP. NAME RECIPIENT AFFILIATION
Document Control Branch (Document Control Desk)

SUBJECT: Forwards relief request 95-04, allowing util to take credit for limited ultrasonic exams on certain reactor vessel head welds, reactor vessel head-to-flange welds, SG nozzle-to-vessel welds & SG nozzle inside radius welds.

DISTRIBUTION CODE: A047D COPIES RECEIVED: LTR 1 ENCL 1 SIZE: 10
TITLE: OR Submittal: Inservice/Testing/Relief from ASME Code - GL-89-04

NOTES:

	RECIPIENT ID CODE/NAME	COPIES LTTR ENCL	RECIPIENT ID CODE/NAME	COPIES LTTR ENCL
	PD2-2 LA	1 1	PD2-2 PD	1 1
	WIENS, L	1 1		
INTERNAL:	ACRS	6 0	AEOD/SPD/RAB	1 1
	<u>FILE CENTER 01</u>	1 1	NRR/DE/EMCB	1 1
	NRR/DE/EMEB	1 1	NUDOCS-ABSTRACT	1 1
	OGC/HDS2	1 0	RES/DSIR/EIB	1 1
EXTERNAL:	LITCO ANDERSON	1 1	NOAC	1 1
	NRC PDR	1 1		

NOTE TO ALL "RIDS" RECIPIENTS:

PLEASE HELP US TO REDUCE WASTE! CONTACT THE DOCUMENT CONTROL DESK, ROOM OWFN 5D8 (415-2083) TO ELIMINATE YOUR NAME FROM DISTRIBUTION LISTS FOR DOCUMENTS YOU DON'T NEED!

TOTAL NUMBER OF COPIES REQUIRED: LTTR 19 ENCL 12

MAY

Duke Power Company
Oconee Nuclear Site
P.O. Box 1439
Seneca, SC 29679

J. W. HAMPTON
Vice President
(803)885-3499 Office
(803)885-3564 Fax



DUKE POWER

October 5, 1995

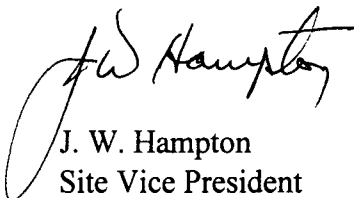
U.S. Nuclear Regulatory Commission
Attention: Document Control Desk
Washington, DC 20555

Subject: Duke Power Company
Oconee Nuclear Station, Units 1, 2, and 3
Docket Nos. 50-269, -270, and -287
Third Ten Year Inservice Inspection Interval
Request for Relief No. 95-04

Pursuant to 10 CFR 50.55a, section (g) (4) (iii), attached is a Request for Relief from ASME Section XI, 1989 Edition. This request is to allow Duke Power to take credit for limited ultrasonic examinations on certain reactor vessel head welds, reactor vessel head-to-flange welds, steam generator nozzle-to-vessel welds, and steam generator nozzle inside radius welds. During the examinations, the ultrasonic examination coverage did not meet the 90% examination coverage requirements of ASME Section XI. Achievement of greater than 90% examination coverage for the subject welds is impractical due to piping geometry, joint configuration, and interferences. All three Oconee units are being addressed by this Request for Relief per recommendations delineated in NRC Inspection Report 95-05 dated 5/5/95.

If there are any questions or further information is needed you may contact D. A. Nix at (803) 885-3634.

Very truly yours,


J. W. Hampton
Site Vice President

Attachment

9510170231 951005
PDR ADDCK 05000269
Q PDR

A047
11

U. S. Nuclear Regulatory Commission
Page 2

xc (w/attch): Mr. L. A. Wiens
 Office of Nuclear Reactor Regulation
 U. S. Nuclear Regulatory Commission
 Washington, DC 20555

xc (w/o attch): Mr. S. D. Ebnetter
 Regional Administrator, Region II
 U. S. Nuclear Regulatory Commission

 Mr. P. E. Harmon
 Senior NRC Resident Inspector
 Oconee Nuclear Station

 Mr. Max Batavia
 Bureau of Radiological Health
 SC Dept. of Health & Environmental Control
 2600 Bull St.
 Columbia, SC 29201

Duke Power Company

Station Oconee Unit 1, 2 & 3

10-YEAR INTERVAL REQUEST FOR RELIEF NO. 95-04

I. System/Component(s) for Which Relief is Requested:

a. Reactor vessel head welds;

1-RPV-WH5, Item Number B01.021.001
2-RPV-WH5, Item Number B01.021.001
3-RPV-WH5, Item Number B01.021.001

b. Reactor vessel head-to-flange welds:

1-RPV-WH7, Item Number B01.040.001
2-RPV-WH7, Item Number B01.040.001
3-RPV-WH7, Item Number B01.040.001

c. Steam generator nozzle-to-vessel welds:

1-SGA-WG50-2, Item Number B03.130.001
1-SGA-WG50-1, Item Number B03.130.002
2-SGA-WG50-2, Item Number B03.130.003
2-SGA-WG50-1, Item Number B03.130.004
3-SGA-WG50-2, Item Number B03.130.001
3-SGA-WG50-1; Item Number B03.130.002

d. Steam generator nozzle inside radius welds:

1-SGA-WG50-2, Item Number B03.140.001
1-SGA-WG50-1, Item Number B03.140.002
2-SGA-WG50-2, Item Number B03.140.003
2-SGA-WG50-1, Item Number B03.140.004
3-SGA-WG50-2, Item Number B03.140.001
3-SGA-WG50-1, Item Number B03.140.002

II. Code Requirement:

Section XI Table IWB-2500-1, Examination Category B-A, Pressure Retaining Welds In Reactor Vessel, Figure IWB-2500-3, Note 2 requires essentially 100% of the weld length be examined.

Section XI Table IWB-2500-1, Examination Category B-A, Pressure Retaining Welds In Reactor Vessel, Figure IWB-2500-5, Note 2 requires essentially 100% of the weld length be examined.

Section XI Table IWB-2500-1, Examination Category B-D, Full Penetration Welds Of Nozzles In Vessels - Inspection Program B, Figures IWB-2500-7(a) through IWB-2500-7(d) requires essentially 100% of the nozzle weld and radius be examined.

III. Code Requirement from which Relief is Requested:

Relief is requested from the requirement of examining essentially 100% of the weld length. Due to part geometry and actual physical barriers, obtaining even 90% of the weld length as outlined in Code Case N-460 is not possible.

ASME Section V, Article 4, T-441.3.2 Scanning Requirements, 1989 Edition with no addenda as modified by Code Case N-460.

This Paragraph requires scanning of the examination volume(s) using three angle beams and a straight beam from both sides of the weld. When scanning for reflectors parallel to the weld, the angle beams shall be aimed at right angles to the weld axis, with the search unit(s) manipulated so that the ultrasonic beams pass through the entire volume of weld metal. The adjacent base metal in the examination volume must be completely scanned by two angle beams, but need not be completely scanned by both angle beams from both directions (any combination of two angle beams will satisfy the requirement).

When scanning for reflectors transverse to the weld, the angle beam search units shall be aimed parallel to the axis of longitudinal and circumferential welds. The search unit shall be manipulated so that the ultrasonic beams pass through all of the examination volume.

Scanning shall be done in two directions 180 degrees to each other to the extent possible. Areas blocked by geometric conditions shall be examined from at least one direction.

Code Case N-460 allows credit for full volume coverage if it can be shown that at least 90% of the required volume has been examined.

IV. Basis for Relief:

Item Number B01.021.001 (3RPV-WH5), RPV Head Weld was examined to the maximum extent practical using ultrasonic techniques in accordance with the requirements of ASME Section V, Article 4, 1989 Edition. The additional requirements of Regulatory Guide 1.150, Revision 1, Appendix A were also used in the examination.

Because of geometric conditions, i.e., lifting lugs adjacent to the weld, 81.85% of the near surface volume and 79.85% of the weld and base metal volumes were covered. In order to achieve more coverage of the required volumes the lifting lugs would have to be moved away from the weld area.

Item Number B01.040.001 (3RPV-WH7), RPV Head-to-Flange Weld was examined to the maximum extent practical using ultrasonic techniques in accordance with the requirements of ASME Section V, Article 4, 1989 Edition. The additional requirements of Regulatory Guide 1.150, Revision 1, Appendix A were also used in the examination.

Because of geometric conditions, i.e., single sided access, 63.35% of the near surface volume and 48.55% of the weld and base metal volumes were covered. In order to achieve more coverage of the required volumes, the weld must be at a greater distance from the flange.

Item Numbers B03.130.001 (3-SGA-WG50-2, nozzle weld), B03.130.002 (3-SGA-WG50-1, nozzle weld), B03.140.001 (3-SGA-WG50-2, inside radius) and B03.140.002 (3-SGA-WG50-1, inside radius), Steam Generator A Primary Outlet Nozzle-to-Lower Head Weld were examined to the maximum extent practical using ultrasonic techniques in accordance with the requirements of ASME Section V, Article 4, 1989 Edition.

Because of geometric conditions, i.e., single sided access and support skirt location, 15.6% of the required examination volume was covered. In order to achieve more coverage the support skirt would have to be cut away from the nozzle.

All three units for Oconee are being addressed in this request for relief as addressed in NRC correspondence dated May 5, 1995 concerning NRC Inspection Report No. 50-269/95-05, 50-270/95-05, 50-287/95-05.

V. Alternate Examinations or Testing:

Duke Power Company will continue to perform an ultrasonic examination of Item Numbers B01.021.001, 3RPV-WH5, RPV Head Weld and B01.040.001, 3RPV-WH7, RPV Head-to-Flange Weld to the maximum extent practical in accordance with the requirements of ASME Section V, Article 4, 1989 Edition and Regulatory Guide 1.150, Revision 1, Appendix A.

Duke Power Company will continue to perform an ultrasonic examination of Item Numbers B03.130.002, B03.130.001, B03.140.002 and B03.140.001, Steam Generator A Primary Outlet Nozzle-to-Lower Head Weld and Inside Radius to the maximum extent practical in accordance with the requirements of ASME Section V, Article 4, 1989 Edition.

VI. Justification for the Granting of Relief:

As stated above, Duke Power Company will continue to ultrasonically examine the welds and components (inside radius) to the extent practical within the limits of original design and construction. This will provide reasonable assurance of weld / component integrity. Thus, an acceptable level of quality and safety will have been achieved and public health and safety will not be endangered by allowing relief from the aforementioned Code requirements.

VII. Implementation Schedule:

Unit 3, Refueling Outage 15

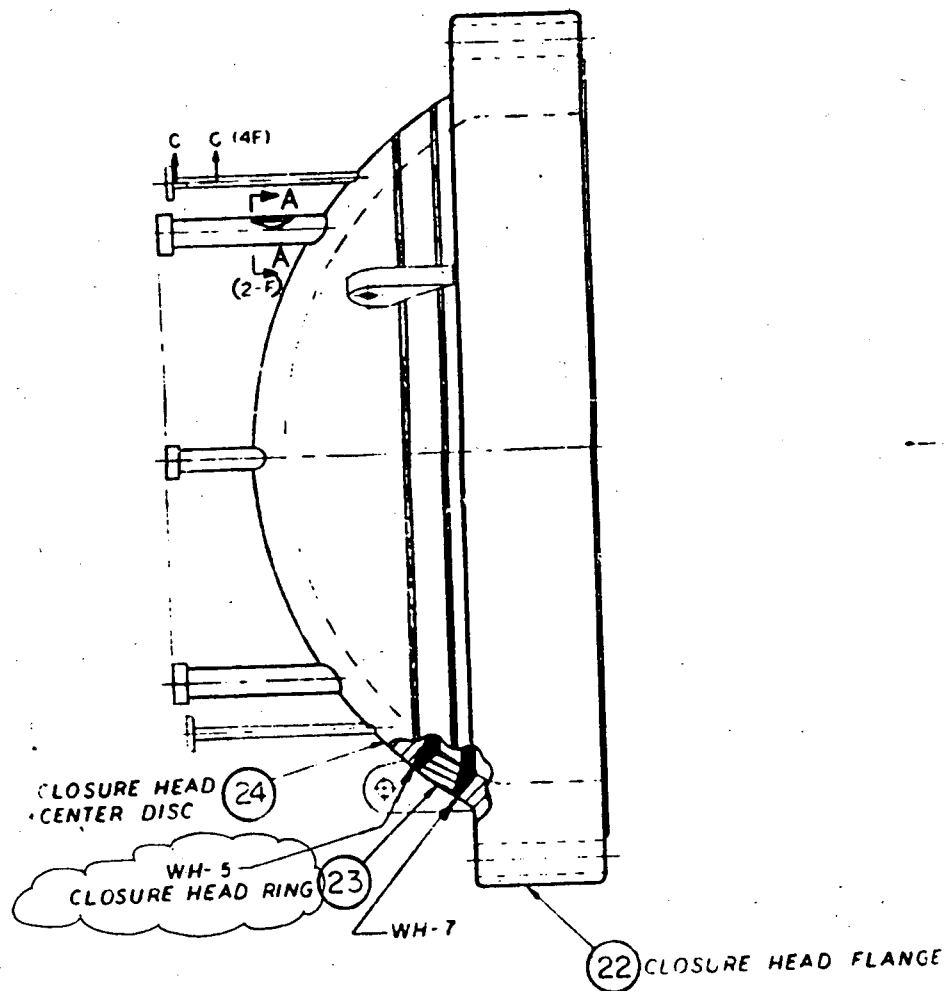
Unit 1, Refueling Outages 16 & 17

Unit 2, Refueling Outage 15

Evaluated By: RTG Rowe Date 10/2/95

Reviewed By: JC Shopshire Date 10/2/95

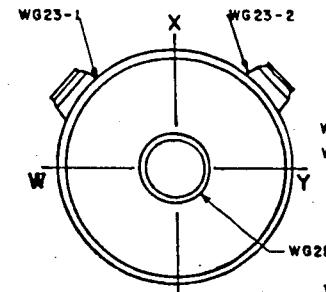
REVISIONS			
NO.	DESCRIPTION	DATE	APPROVED
1	PLAN VIEW - RELOCATED LIFTING LUGS 90° COUNTERCLOCKWISE R/D/AMS	6/27	G. R. Smith
2	(158) ADDED THERMOCOUPLE PENETRATIONS (149) ADDED SECTION C-C RSM/AMS	6-7-68	G. R. Smith
3	(ZONE C-8) RELOCATED SECT. A-A IN- DICATION. (ZONE I-II) REMOVED REF. TO CONTRACTS 620-0004 & 620-0009. (ZONE C-2 H-2) IN SECT. B-B: EXTENDED VIEW TO INCLUDE WH-152 (WH-38, 46, 48, 49-1, 54, 55 WAS -150	7/4/68	RDP
4	(62) RELOCATED CALLOUT FOR SECT. A-A (184) (WH-152 & WH-38, 46) CHSD CONFG. OF WELD PREP TO SUNT DETAIL DWG. REL/REF	8/10/68	K. L. Smith
5	(SECTION 'A-A'/'B-B') MOVED SOURCE & PENETRATOR OUTSIDE OF CRDM HOUSING & (SECTION 'B-B') FINE GRAIN FILM WAS AA OR EQUIV. 200KV TO 400KV X-RAY WAS IR-192, ADDED MIN FOCAL DIST 38" ROY/SGS	7/11/70	SGS



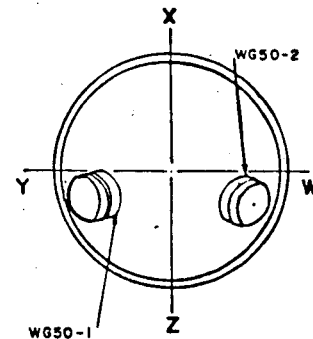
UNCONTROLLED

WELD LIST				BILL OF MATERIAL			
IDENT NO.	PIECE NO.	DIAM.	THICK.	PC NO	QTY	DESCRIPTION	MAIL.
58-1	1 TO 2	138" I.D.	4.188 MIN.	1	1	SHELL SECTION	SA 212 GR. B
WG8-2	2 TO 3	138" I.D.	4.188 MIN.	2	2	SHELL SECTION	SA 212 GR. B
WG8-3	3 TO 4	138" I.D.	4.188 MIN.	3	1	SHELL SECTION	SA 212 GR. B
WG8-4	5 TO 6	138" I.D.	4.188 MIN.	4	1	SHELL SECTION	SA 212 GR. B
WG23-1	14 TO 3	29.00"	6.625 MIN.	5	1	SHELL SECTION	SA 212 GR. B
WG23-2	14 TO 3	29.00"	6.625 MIN.	6	1	SHELL SECTION	SA 212 GR. B
WG25	70 TO 8	48.63"	8.000 MIN.	7	1	LOWER HEAD	SA 302 GR. B
WG50-1	65 TO 7	38.38"	8.000 MIN.	8	1	UPPER HEAD	SA 302 GR. B
WG50-2	65 TO 7	38.38"	8.000 MIN.	14	2	24" STEAM OUTLET NOZZLE	SA 508 CL. 1
WG57	95 TO 7	135" I.D.	N/A	50	1	LOWER TUBE SHEET	SA 508 CL. 2
WG58-1	8 TO 51	119" I.D.	8.000 MIN.	51	1	UPPER TUBE SHEET	SA 508 CL. 1
WG58-2	7 TO 50	119" I.D.	8.000 MIN.	65	2	28" PRIMARY OUTLET NOZZLE	SA 508 CL. 1
WG59	6 TO 50	138" I.D.	6.625 MIN.	70	1	36" PRIMARY INLET NOZZLE	SA 508 CL. 1
	1 TO 51	138" I.D.	6.625 MIN.	95	1	SUPPORT SKIRT TRANSITION RING	SA 302 GR. B

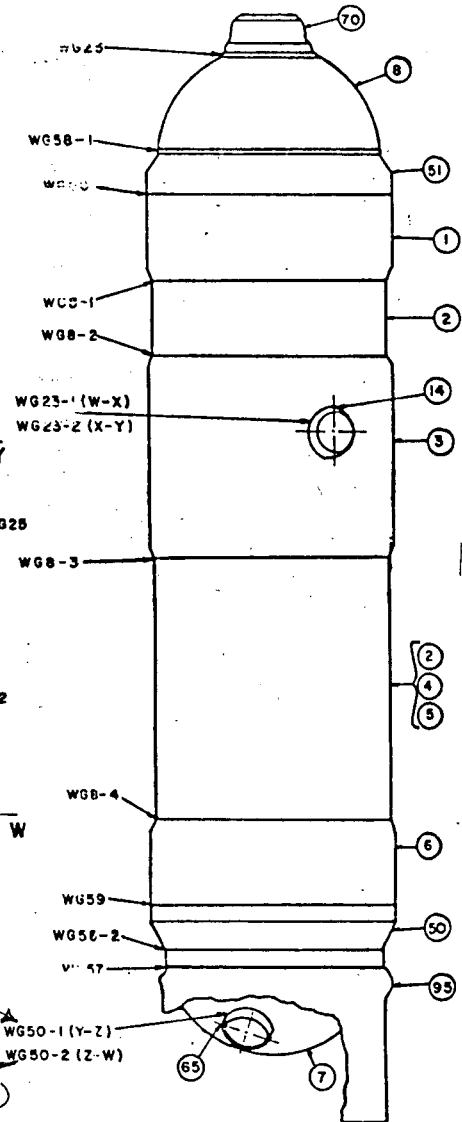
UNCONTROLLED



TOP VIEW



BOTTOM VIEW



B03.130.002

B03.140.002 (INSIDE RADIUS)

REFERENCE DWGS:

OM 201-1873
OM 201-176

B03.130.001

B03.140.001 (INSIDE RADIUS)

NOTES:

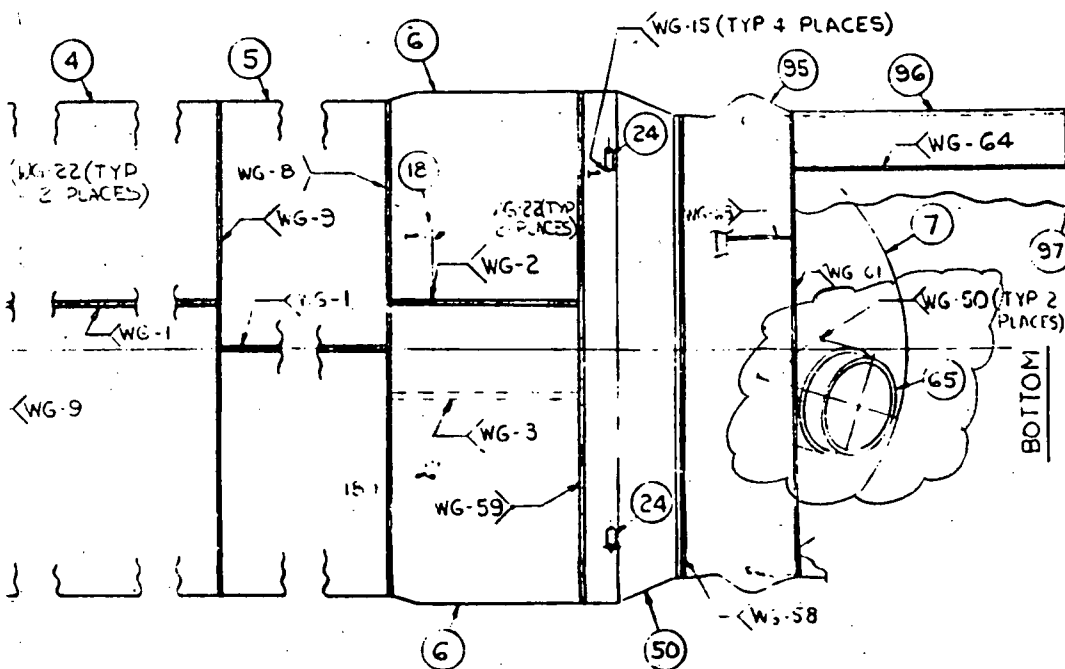
1. ALL I.D. NUMBERS SHALL BE PRECEDED BY "ISGA-".
2. PIECE NUMBERS ARE SHOWN IN CIRCLES.

1.	ADD TO BODY VIEWS & ELEV. DRAWING	REV.	DATE	REV.	DATE
0	ORIGINAL	REV.	DATE	REV.	DATE
NO.	REVISION	DATE	DATE	DATE	DATE

TITLE
STEAM GENERATOR "A"
WELD OUTLINE

DWG NO. ISI-OCNI-003 REV. 1

UNCONTROLLED



NO.	DESCRIPTION	DATE	BY
1	RELOCATED WG-68 ZONE GHIO TO F-7 CHGD WELD DET ZONE I-1 CHGD LOC 1 DET SECTION D-D ADDED DET & CHART ZONE I-8	1/16/67	C. H. H.
2	RELOCATED MK-20, ADDED MK-18 & CHGD TABLE D-D TO AGREE	1/24/68	C. H. H.
3	ADDED LOWER MK-8 WELD WGT (780 AND 81) DELETED WELD NUMBERS WG-54, WG-56, WG-57, WG-97, WG-98, WG-99 (D, L, B, C, D) AND FROM 20-ES (2 D, 7-1, AND 8-9-1) CHGD MIN THK AND PENE FOR WELD WG-68 (7-F) KACH	2/20/68	C. H. H.
4	CHGD WG-50 FROM SECT 'CC' TO SECT 'B-B' DRS/TSR	1/16/69	J. B. H.
5	REMOVED CONTRACT NPS 620-0004-S WELD-CON-55 AND ADD UNIT #1 & SHEET #1 IN TITLE BLOCK. DELETED WG-1170 (K-2) CHGD MK-20 TO MK-18 (B, C, D) (SECT D-D) DRS/TSR	2/20/68	J. B. H.
6	CHGD SECT 'E' (WG-13) FROM SINGLE WALL TO DOUBLE WALL SHOT & MOVED LOCATION OF SECT 'E' FROM (H-10) TO (D-2). ADDED TUBESHEET PLUG X-RAY INFORMATION (H-10) JSE/ED	1/16/68	J. B. H.
7	REMOVED BACKING RING AT WELD WG-50 ZONE (E-2), DELETED WELD WG-29 & SECT. A-A (B, C, D) (10) TS	2/20/68	J. B. H.

NOTES

- FOR GENERAL NOTES SEE LONGITUDINAL SECTION DRAWING

STEAM GENERATOR

WELD ID

2-SGA-WG50-2
2-SGA-WG50-1

ITEM NOS.

B03.130.001
B03.140.001

B03.130.002
B03.140.002