



UNITED STATES
NUCLEAR REGULATORY COMMISSION
WASHINGTON, D.C. 20555-0001

August 17, 2015

Lindsey D. Bilyeu
Senior Section 106 Reviewer
Historic Preservation Office, THPO
Choctaw Nation of Oklahoma
P.O. Box 1210
Durant, OK 74701

SUBJECT: U.S. NUCLEAR REGULATORY COMMISSION, CONTINUING
PALEOLIQUEFACTION FIELD WORK ALONG SELECTED RIVER SEGMENTS
IN ARKANSAS AND TENNESSEE

Dear Ms. Bilyeu:

The United States Nuclear Regulatory Commission (NRC) has performed the field work described in our National Historic Preservation Act (NHPA), Section 106 consultation letters of February 15, 2013 and July 29, 2014 as well as the GIS Shapefiles transmitted by an e-mail from Dr. Thomas Weaver of my staff, dated September 25, 2014 (enclosed). The field work identified various paleoliquefaction features in Arkansas and Tennessee for the purpose of assessing seismic hazards to commercial nuclear power plants. The NRC's contractor conducted this field work along various river segments in Arkansas and Tennessee (please see Figure 1 below for the location of the work conducted previously) during September through December 2013 and 2014. By e-mail dated September 25, 2014, your office concurred with our no adverse effect finding.

The NRC plans to continue the field work described most recently in its letter of July 29, 2014 in Arkansas and Tennessee during the months of September through December 2015. Figure 1 shows additional river segments in Arkansas and Tennessee that may be the subject of the NRC's continuing field work. Due to the limited scope and minor disturbance of this field work, the NRC has determined that the expansion of the field work to these additional river segments will have no adverse effect on any historic properties or tribal cultural resources located along or in these river segments, assuming such properties or resources are present. GIS Shapefiles for the previously identified and new river sections are included in the enclosed compact disc. As noted in your e-mail of September 25, 2014, the NRC contractor will stop all work and contact your office immediately in the event that Native American cultural materials, human remains, or burials are encountered.

In the event that the NRC considers any particular site along any of the subject river segments to be a candidate site for a paleoliquefaction study, which may involve the excavation of a trench, the NRC will determine the area of potential effects and then initiate consultation with your office, the appropriate State Historic Preservation Officer(s), and other interested

consulting parties. The NRC considers such paleoliquefaction study, if pursued, to be a separate undertaking than the field work described in our July 29, 2014 letter.¹

Please provide your comments on our determination of no adverse effect for the proposed field work at your earliest convenience. If you have any questions or require additional information, please contact Dr. Weaver by phone at (301) 415-2383 or by email at Thomas.Weaver@nrc.gov. All written correspondence should be sent to the NRC at the following address with attention to the Document Control Desk. We look forward to your feedback.

ATTN: Document Control Desk
U.S. Nuclear Regulatory Commission
Washington, DC 20555-0001

Sincerely,

/RA Kathryn M. Brock for/

Brian E. Thomas, Director
Division of Engineering
Office of Nuclear Regulatory Research

Enclosures:

Letter from NRC to Choctaw Nation of Oklahoma dated February 13, 2013

Letter from NRC to Choctaw Nation of Oklahoma dated July 29, 2014

Email correspondence between NRC and Choctaw Nation of Oklahoma dated
September 25, 2013

Compact Disc containing GIS Shapefiles for river sections in Arkansas and Tennessee

¹ In addition to the field work (river reconnaissance), the July 29, 2014 letter also described a proposed paleoliquefaction study involving the excavation of two sites in Arkansas (that undertaking is designated by the Arkansas Historic Preservation Program as AHPP Tracking Number 78798.1).

cc: Mr. Eric Gillilad
Senior Archeologist/106 Review Coordinator
The Department of Arkansas Heritage
Arkansas Historic Preservation Program
323 Center Street, Suite 1500
Little Rock, AR 72201

Dr. Martitia Tuttle
M. Tuttle & Associates
128 Tibbetts Lane
Georgetown, ME 04548

Dr. Thomas Weaver, P.E., NRC/RES/DE/SGSEB
Mr. Andrew Pessin, Esq., NRC/OGC/GCLR/RMR
Mr. Stuart Easson, NRC/NMSS/MSTR/FSTB

L. Bilyeu

-3-

cc: Mr. Eric Gillilad
Senior Archeologist/106 Review Coordinator
The Department of Arkansas Heritage
Arkansas Historic Preservation Program
323 Center Street, Suite 1500
Little Rock, AR 72201

Dr. Martitia Tuttle
M. Tuttle & Associates
128 Tibbetts Lane
Georgetown, ME 04548

Dr. Thomas Weaver, P.E., NRC/RES/DE/SGSEB
Mr. Andrew Pessin, Esq., NRC/OGC/GCLR/RMR
Mr. Stuart Easson, NRC/NMSS/MSTR/FSTB

ADAMS Accession No.: ML15226A532

OFFICE	RES/DE/SGSEB	RES/DE/SGSEB	OGC (via email)	D: RES/DE
NAME	T. Weaver	J. Burke	A. Pessin	K. Brock for B. Thomas
DATE	08/14/15	08/17/15	07/23/15	08/17/15

OFFICIAL RECORD COPY

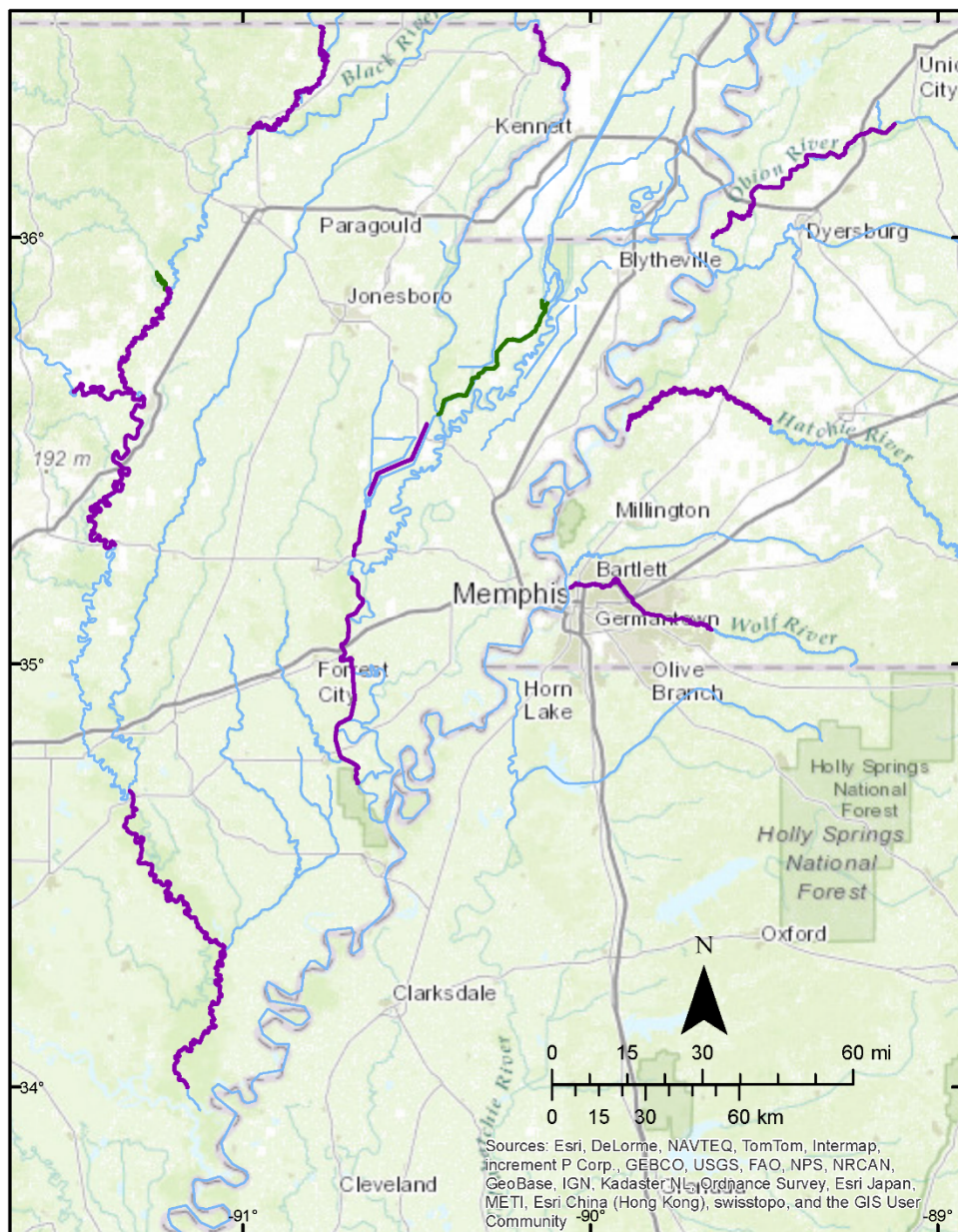


Figure 1 Map of paleoliquefaction study area in Arkansas and Tennessee. River segments identified in the GIS Shapfiles provided by NRC September 25, 2015 are delineated in purple. The NRC has conducted, and may continue, field work in these purple delineated river segments. Additional river segments where the NRC proposes to expand its field work are delineated in green.