

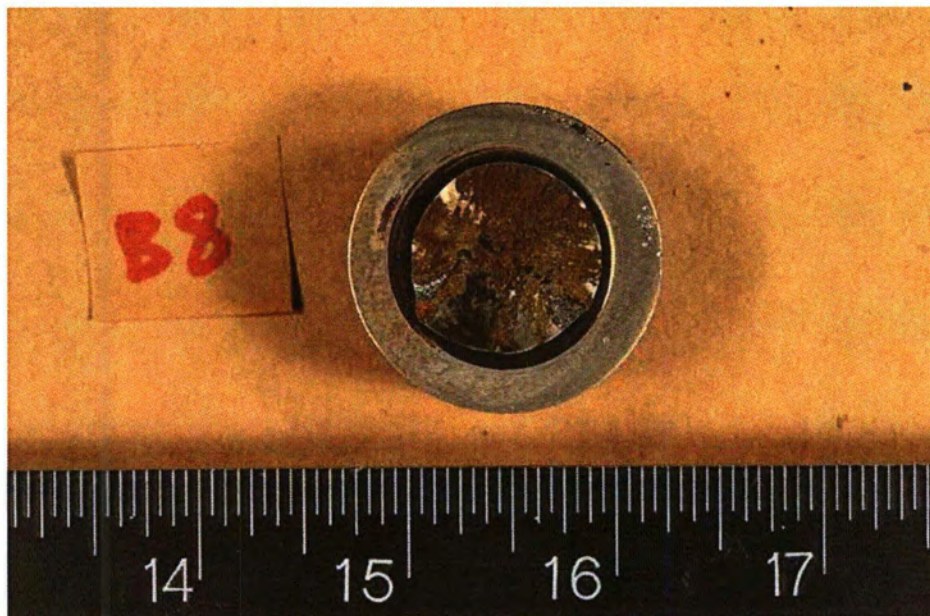


Bolt 300°-6 Head



Bolt 300°-6 Shank

Figure 34: Receipt macro photographs for bolt 300°-6.



Bolt 300°-7 Head



Bolt 300°-7 Shank

Figure 35: Receipt macro photographs for bolt 300°-7.

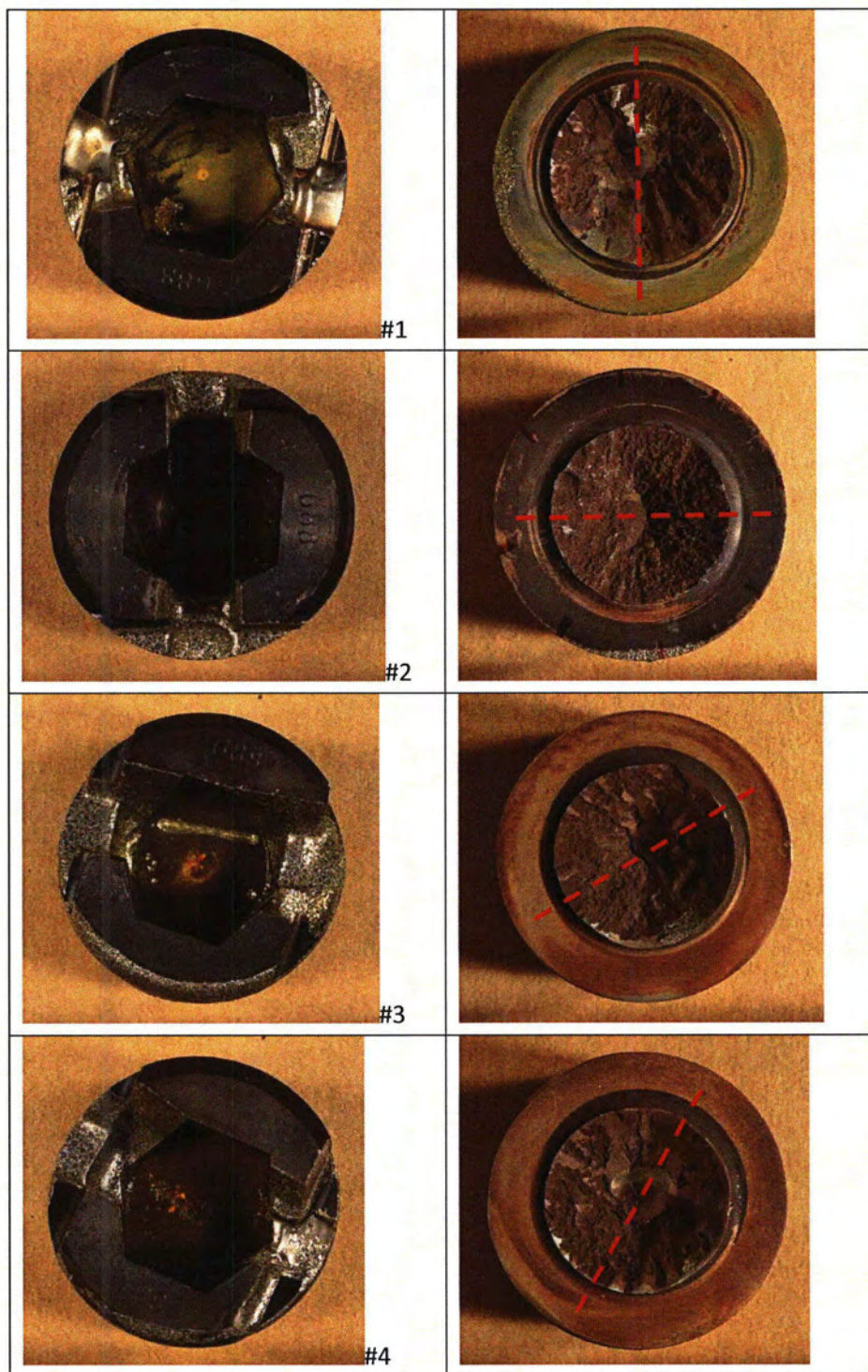


Figure 36: Receipt macro photographs for bolts 1-4 from the 120° clevis. Bolt orientation in the photos matches the in-service orientation. Red dashed lines denote fracture surface axis of symmetry.

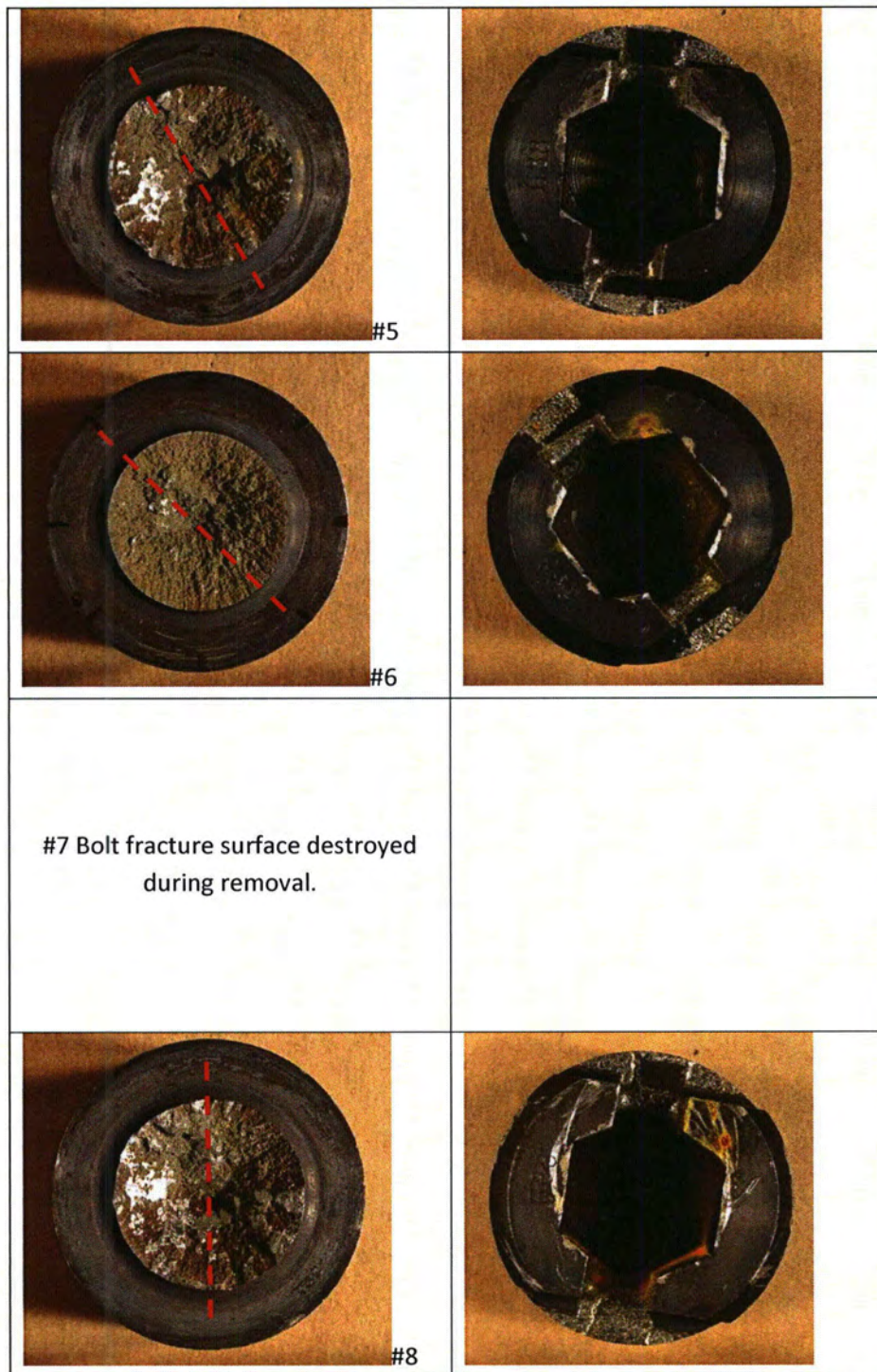


Figure 36 (continued): Receipt macro photographs for bolts 5, 6, and 8 from the 120° clevis. Bolt orientation in the photos matches the in-service orientation. Red dashed lines denote fracture surface axis of symmetry.

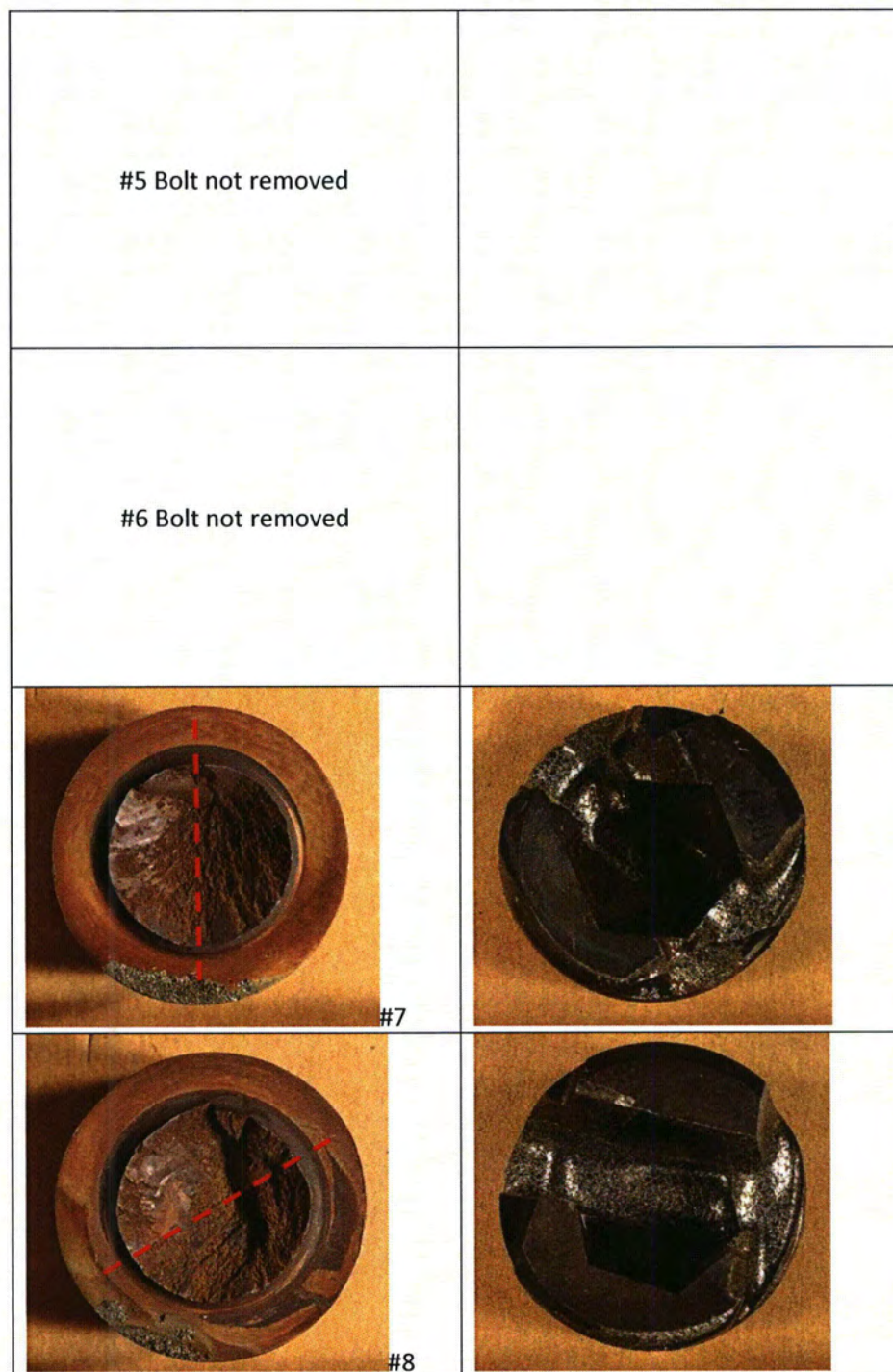


Figure 37: Receipt macro photographs for bolts 7 and 8 from the 180° clevis. Bolt orientation in the photos matches the in-service orientation. Red dashed lines denote fracture surface axis of symmetry.

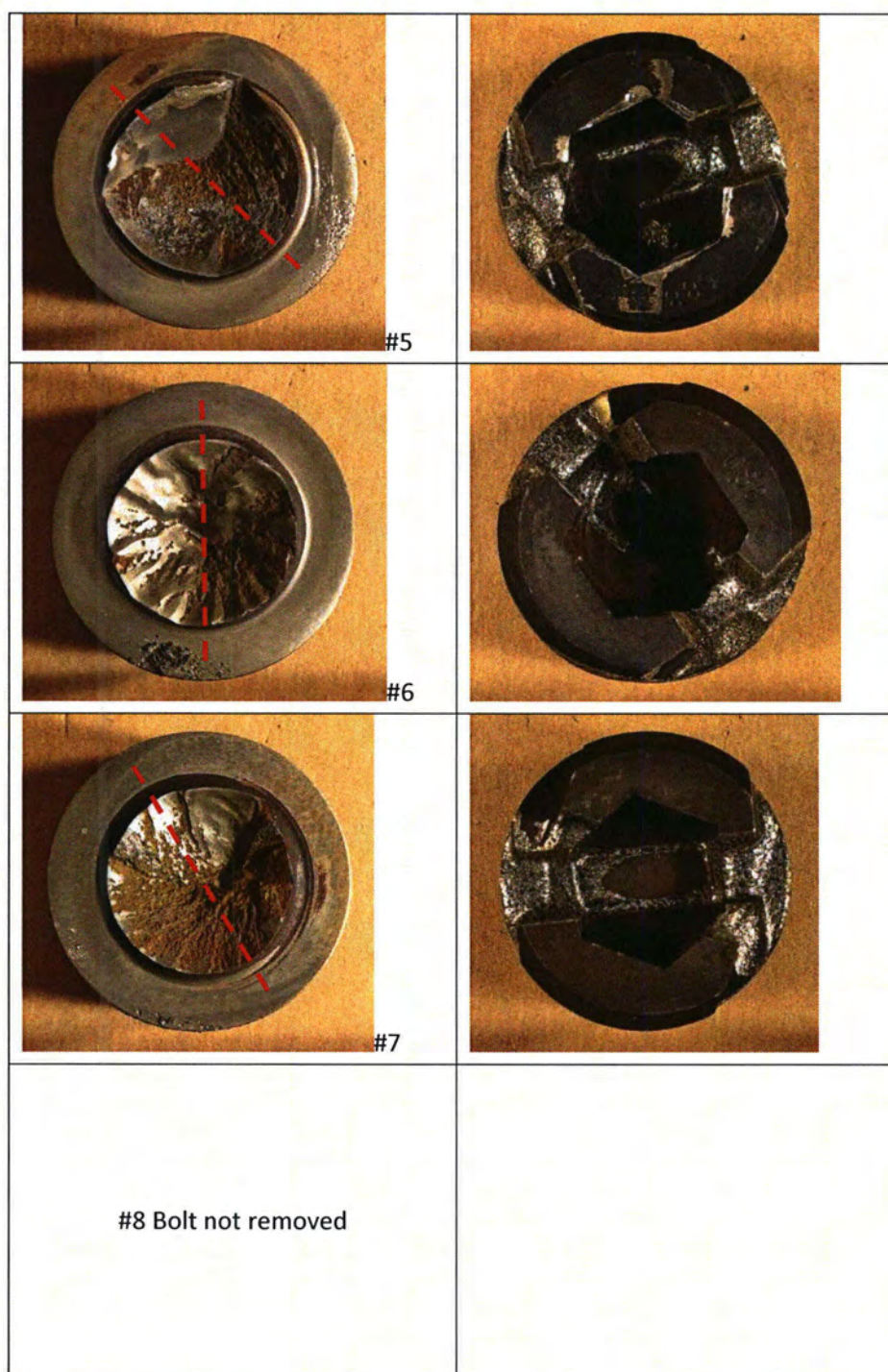


Figure 38: Receipt macro photographs for bolts 5, 6, and 7 from the 300° clevis. Bolt orientation in the photos matches the in-service orientation. Red dashed lines denote fracture surface axis of symmetry.

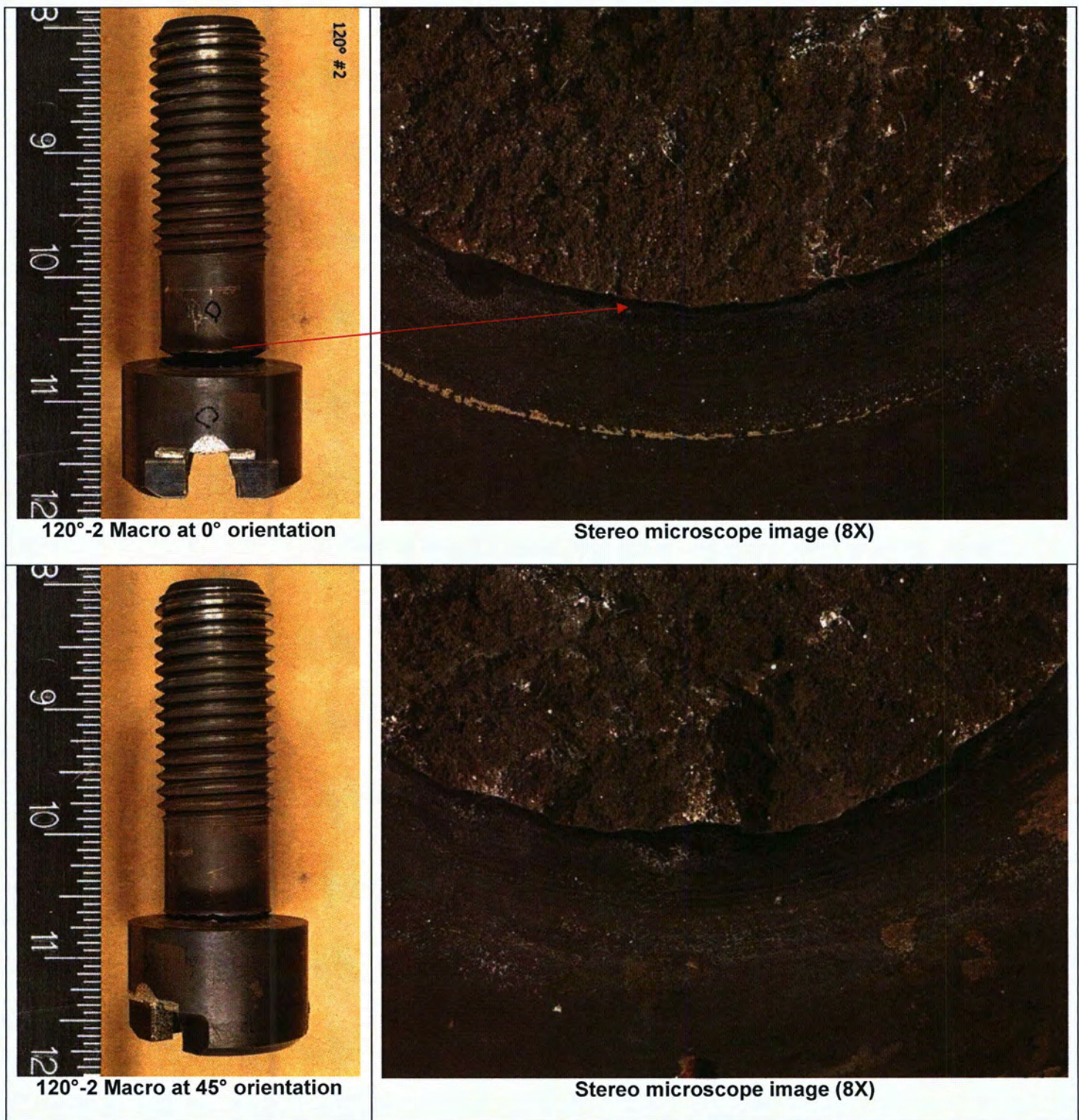


Figure 39: Macro and stereo photographs of bolt 120°-2 taken at 45° increments.

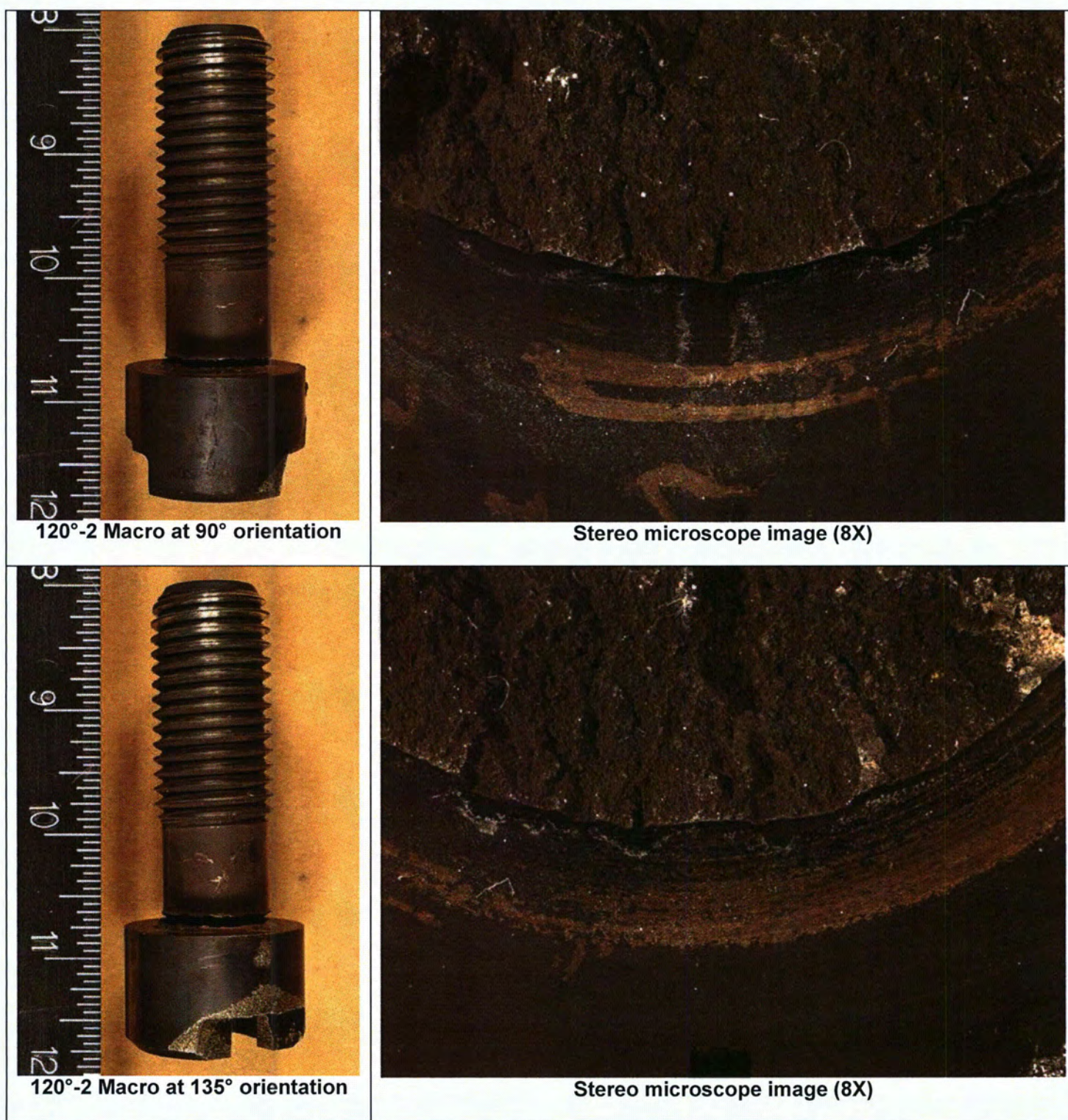


Figure 39 (continued): Macro and stereo photographs of bolt 120°-2 taken at 45° increments.

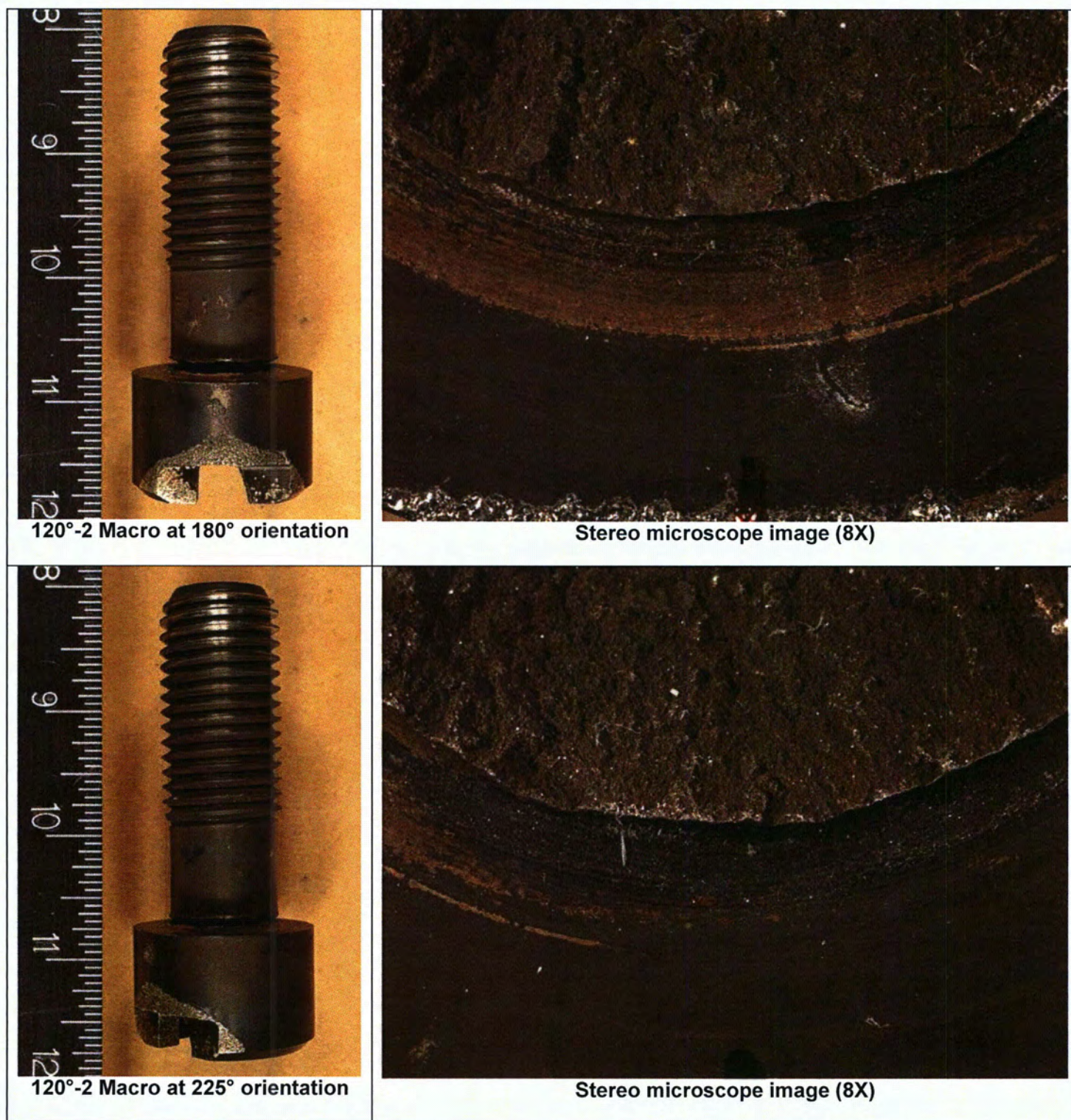


Figure 39 (continued): Macro and stereo photographs of bolt 120°-2 taken at 45° increments.

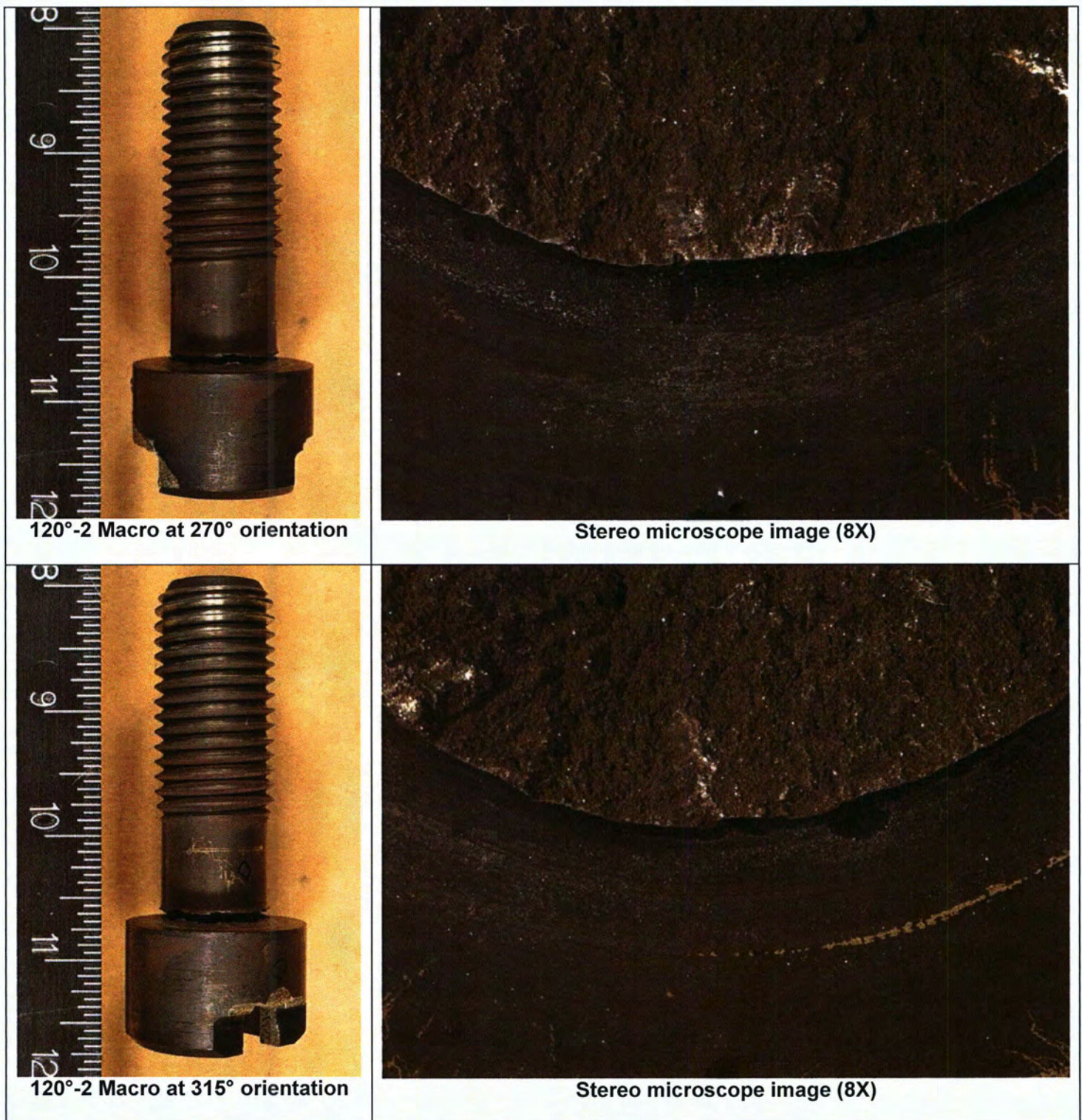


Figure 39 (continued): Macro and stereo photographs of bolt 120°-2 taken at 45° increments.

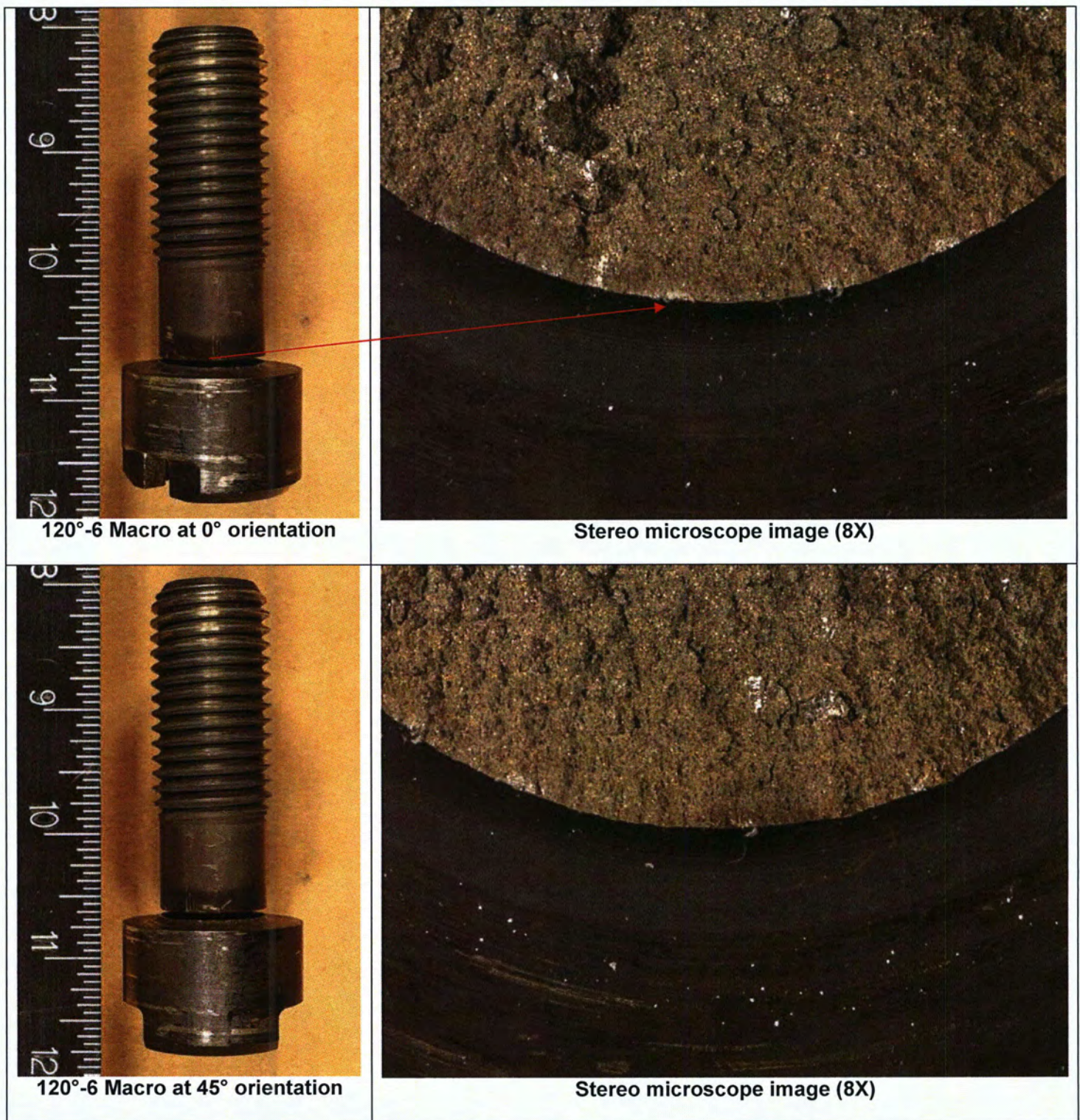


Figure 40: Macro and stereo photographs of bolt 120°-6 taken at 45° increments.

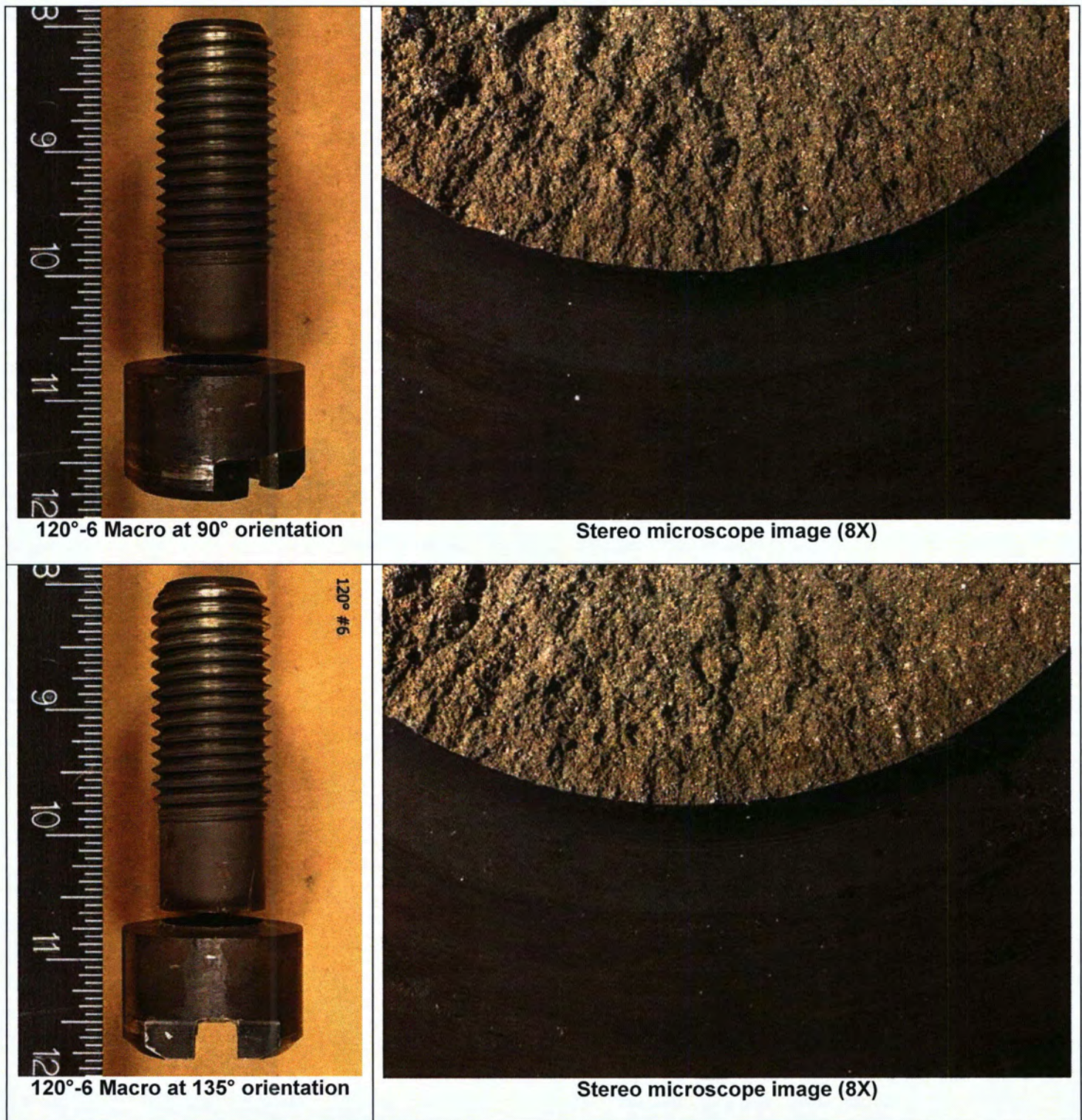


Figure 40 (continued): Macro and stereo photographs of bolt 120°-6 taken at 45° increments.



Figure 40 (continued): Macro and stereo photographs of bolt 120°-6 taken at 45° increments.

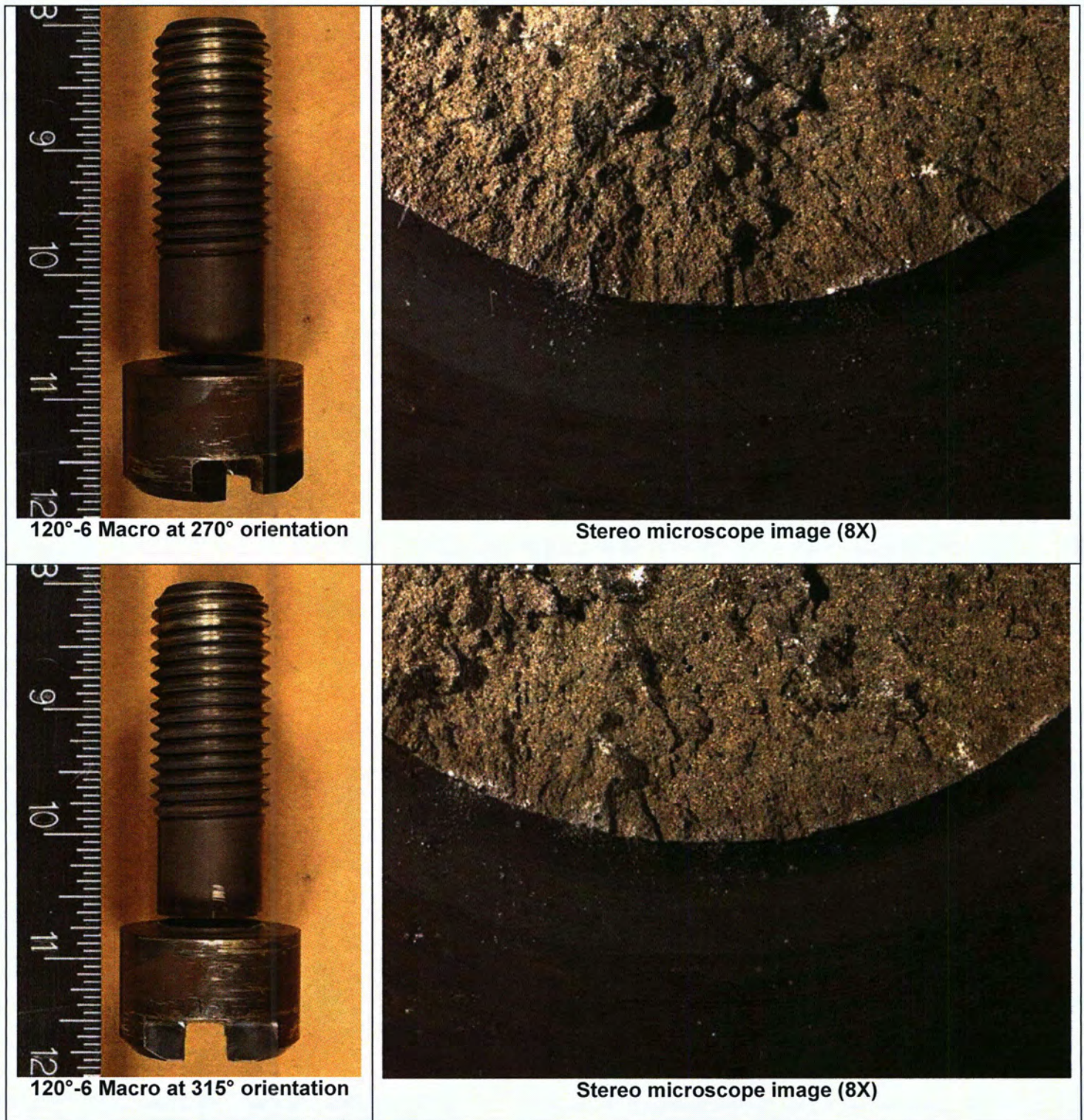


Figure 40 (continued): Macro and stereo photographs of bolt 120°-6 taken at 45° increments.

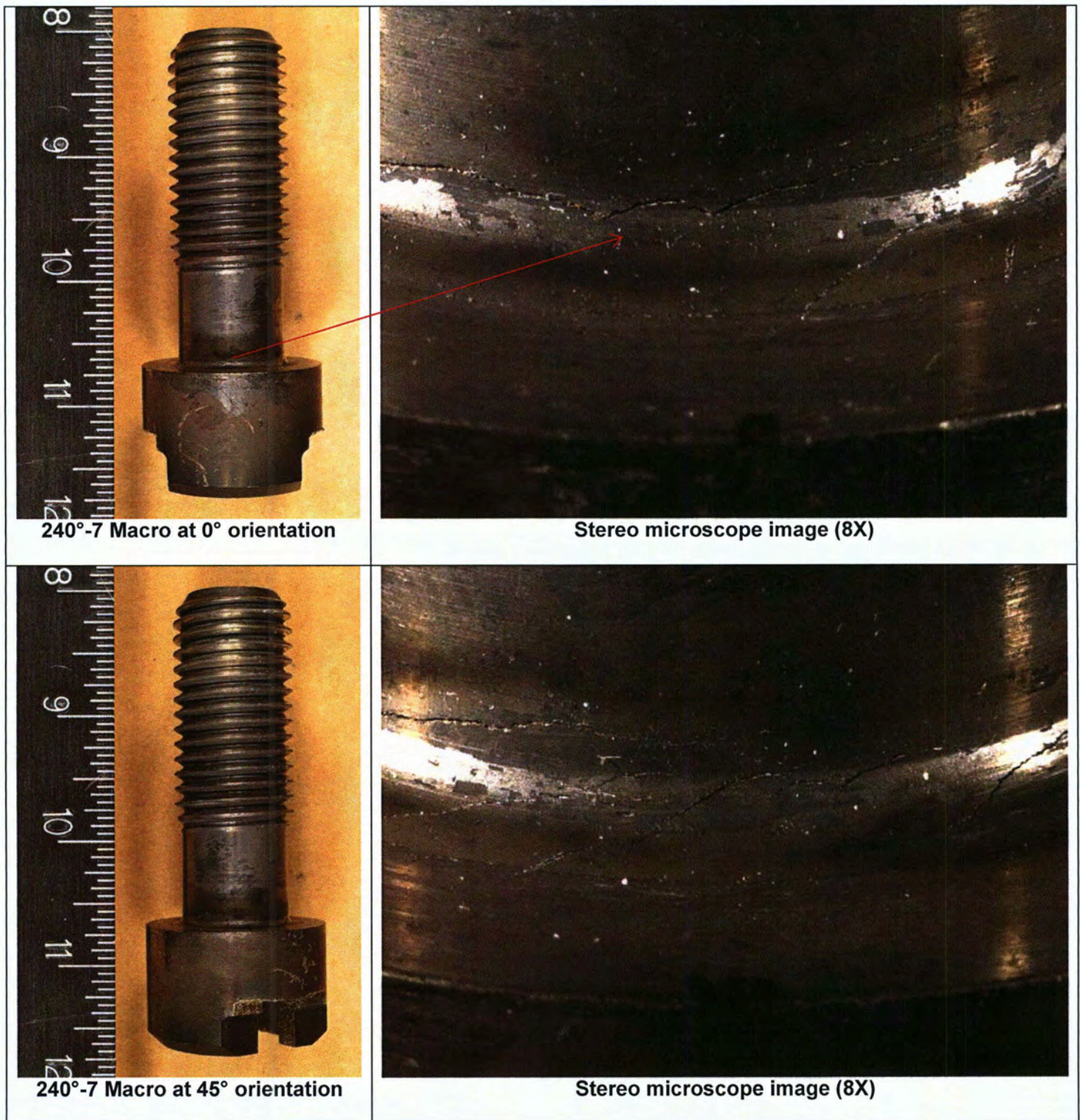


Figure 41: Macro and stereo photographs of bolt 240°-7 taken at 45° increments.