

Dresden 10 CFR 20.2002 Approval for Disposal of Soils

IPaC Trust Resource Report

Generated July 02, 2015 02:18 PM MDT



US Fish & Wildlife Service

IPaC Trust Resource Report



Project Description

NAME

Dresden 10 CFR 20.2002 Approval for
Disposal of Soils

PROJECT CODE

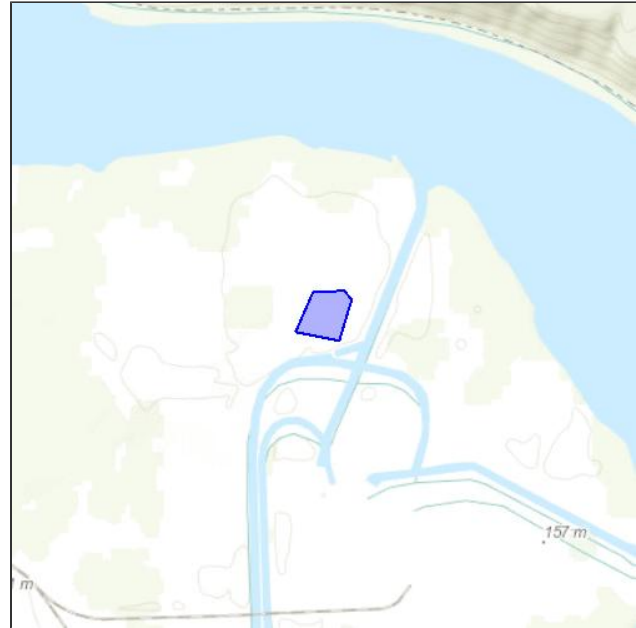
BABNW-VFGFZ-ATZF4-T4C64-U4MDBM

LOCATION

Grundy County, Illinois

DESCRIPTION

The U.S. Nuclear Regulatory Commission (NRC) is considering a request by Exelon Generation Company, LLC (EGC) for onsite disposal of slightly contaminated soil at the Dresden Nuclear Power Station



(DNPS). This request proposes the disposal of approximately 20,000 cubic meters (m³) (cubic feet [ft³]) of soil and sludge containing trace quantities of residual radioactive material in a 100 meter (m) (328 ft) by 100 m (328 ft) plot located on the owner controlled area on the north side of DNPS.

U.S. Fish & Wildlife Contact Information

Species in this report are managed by:

Rock Island Ecological Services Field Office

Rock Island Ecological Services Field Office

1511 47TH AVE

Moline, IL 61265-7022

(309) 757-5800

Endangered Species

Proposed, candidate, threatened, and endangered species that are managed by the [Endangered Species Program](#) and should be considered as part of an effect analysis for this project.

This unofficial species list is for informational purposes only and does not fulfill the requirements under [Section 7](#) of the Endangered Species Act, which states that Federal agencies are required to "request of the Secretary of Interior information whether any species which is listed or proposed to be listed may be present in the area of a proposed action." This requirement applies to projects which are conducted, permitted or licensed by any Federal agency.

A letter from the local office and a species list which fulfills this requirement can be obtained by returning to this project on the IPaC website and requesting an Official Species List from the regulatory documents section.

Clams

Sheepnose Mussel *Plethobasus cyphus*

Endangered

CRITICAL HABITAT

No critical habitat has been designated for this species.<https://ecos.fws.gov/speciesProfile/profile/speciesProfile.action?spcode=F046>

Flowering Plants

Eastern Prairie Fringed Orchid *Platanthera leucophaea*

Threatened

THIS SPECIES ONLY NEEDS TO BE CONSIDERED IF THE FOLLOWING CONDITION APPLIES

Will this project impact, directly or indirectly, emergent wetland, wet meadow, sedge meadow, fen, wet to mesic prairie, or marsh edges?

CRITICAL HABITAT

No critical habitat has been designated for this species.<https://ecos.fws.gov/speciesProfile/profile/speciesProfile.action?spcode=Q2GG>

Insects

Rattlesnake-master Borer Moth *Papaipema eryngii*

Candidate

CRITICAL HABITAT

No critical habitat has been designated for this species.<https://ecos.fws.gov/speciesProfile/profile/speciesProfile.action?spcode=I0LJ>

Mammals

Indiana Bat *Myotis sodalis*

Endangered

CRITICAL HABITAT

No critical habitat has been designated for this species.

<https://ecos.fws.gov/speciesProfile/profile/speciesProfile.action?spcode=A000>

Northern Long-eared Bat *Myotis septentrionalis*

Threatened

CRITICAL HABITAT

No critical habitat has been designated for this species.

<https://ecos.fws.gov/speciesProfile/profile/speciesProfile.action?spcode=A0JE>

Critical Habitats

Potential effects to critical habitat(s) within the project area must be analyzed along with the endangered species themselves.

There is no critical habitat within this project area

Migratory Birds

Birds are protected by the [Migratory Bird Treaty Act](#) and the Bald and Golden Eagle Protection Act.

Any activity which results in the take of migratory birds or eagles is prohibited unless authorized by the U.S. Fish and Wildlife Service ([1](#)). There are no provisions for allowing the take of migratory birds that are unintentionally killed or injured.

You are responsible for complying with the appropriate regulations for the protection of birds as part of this project. This involves analyzing potential impacts and implementing appropriate conservation measures for all project activities.

Acadian Flycatcher *Empidonax virens*

Season: Breeding

Bird of conservation concern

Bald Eagle *Haliaeetus leucocephalus*

Year-round

Bird of conservation concern

<https://ecos.fws.gov/speciesProfile/profile/speciesProfile.action?spcode=B008>

Bell's Vireo *Vireo bellii*

Season: Breeding

Bird of conservation concern

Black-billed Cuckoo *Coccyzus erythrophthalmus*

Season: Breeding

Bird of conservation concern

<https://ecos.fws.gov/speciesProfile/profile/speciesProfile.action?spcode=B0H1>

Black-crowned Night-heron *Nycticorax nycticorax*

Season: Breeding

Bird of conservation concern

<https://ecos.fws.gov/speciesProfile/profile/speciesProfile.action?spcode=B0EU>

Blue-winged Warbler *Vermivora pinus*

Season: Breeding

Bird of conservation concern

Dickcissel *Spiza americana*

Season: Breeding

Bird of conservation concern

Field Sparrow *Spizella pusilla*

Season: Breeding

Bird of conservation concern

Henslow's Sparrow *Ammodramus henslowii*

Season: Breeding

Bird of conservation concern

<https://ecos.fws.gov/speciesProfile/profile/speciesProfile.action?spcode=B09D>

Kentucky Warbler *Oporornis formosus*

Season: Breeding

Bird of conservation concern

Least Bittern *Ixobrychus exilis*

Season: Breeding

Bird of conservation concern

Northern Flicker *Colaptes auratus*

Year-round

Bird of conservation concern

Pied-billed Grebe *Podilymbus podiceps*

Season: Breeding

Bird of conservation concern

Prothonotary Warbler *Protonotaria citrea*

Season: Breeding

Bird of conservation concern

Red-headed Woodpecker *Melanerpes erythrocephalus*

Year-round

Bird of conservation concern**Rusty Blackbird** *Euphagus carolinus*

Season: Wintering

Bird of conservation concern**Short-eared Owl** *Asio flammeus*

Season: Wintering

Bird of conservation concern<https://ecos.fws.gov/speciesProfile/profile/speciesProfile.action?spcode=B0HD>**Upland Sandpiper** *Bartramia longicauda*

Season: Breeding

Bird of conservation concern<https://ecos.fws.gov/speciesProfile/profile/speciesProfile.action?spcode=B0HC>**Wood Thrush** *Hylocichla mustelina*

Season: Breeding

Bird of conservation concern

Refuges

Any activity proposed on [National Wildlife Refuge](#) lands must undergo a 'Compatibility Determination' conducted by the Refuge. If your project overlaps or otherwise impacts a Refuge, please contact that Refuge to discuss the authorization process.

There are no refuges within this project area

Wetlands

Impacts to [NWI wetlands](#) and other aquatic habitats from your project may be subject to regulation under Section 404 of the Clean Water Act, or other State/Federal Statutes.

Project proponents should discuss the relationship of these requirements to their project with the Regulatory Program of the appropriate [U.S. Army Corps of Engineers District](#).

DATA LIMITATIONS

The Service's objective of mapping wetlands and deepwater habitats is to produce reconnaissance level information on the location, type and size of these resources. The maps are prepared from the analysis of high altitude imagery. Wetlands are identified based on vegetation, visible hydrology and geography. A margin of error is inherent in the use of imagery; thus, detailed on-the-ground inspection of any particular site may result in revision of the wetland boundaries or classification established through image analysis.

The accuracy of image interpretation depends on the quality of the imagery, the experience of the image analysts, the amount and quality of the collateral data and the amount of ground truth verification work conducted. Metadata should be consulted to determine the date of the source imagery used and any mapping problems.

Wetlands or other mapped features may have changed since the date of the imagery or field work. There may be occasional differences in polygon boundaries or classifications between the information depicted on the map and the actual conditions on site.

DATA EXCLUSIONS

Certain wetland habitats are excluded from the National mapping program because of the limitations of aerial imagery as the primary data source used to detect wetlands. These habitats include seagrasses or submerged aquatic vegetation that are found in the intertidal and subtidal zones of estuaries and nearshore coastal waters. Some deepwater reef communities (coral or tubercid worm reefs) have also been excluded from the inventory. These habitats, because of their depth, go undetected by aerial imagery.

DATA PRECAUTIONS

Federal, state, and local regulatory agencies with jurisdiction over wetlands may define and describe wetlands in a different manner than that used in this inventory. There is no attempt, in either the design or products of this inventory, to define the limits of proprietary jurisdiction of any Federal, state, or local government or to establish the geographical scope of the regulatory programs of government agencies. Persons intending to engage in activities involving modifications within or adjacent to wetland areas should seek the advice of appropriate federal, state, or local agencies concerning specified agency regulatory programs and proprietary jurisdictions that may affect such activities.

There are no wetlands identified in this project area