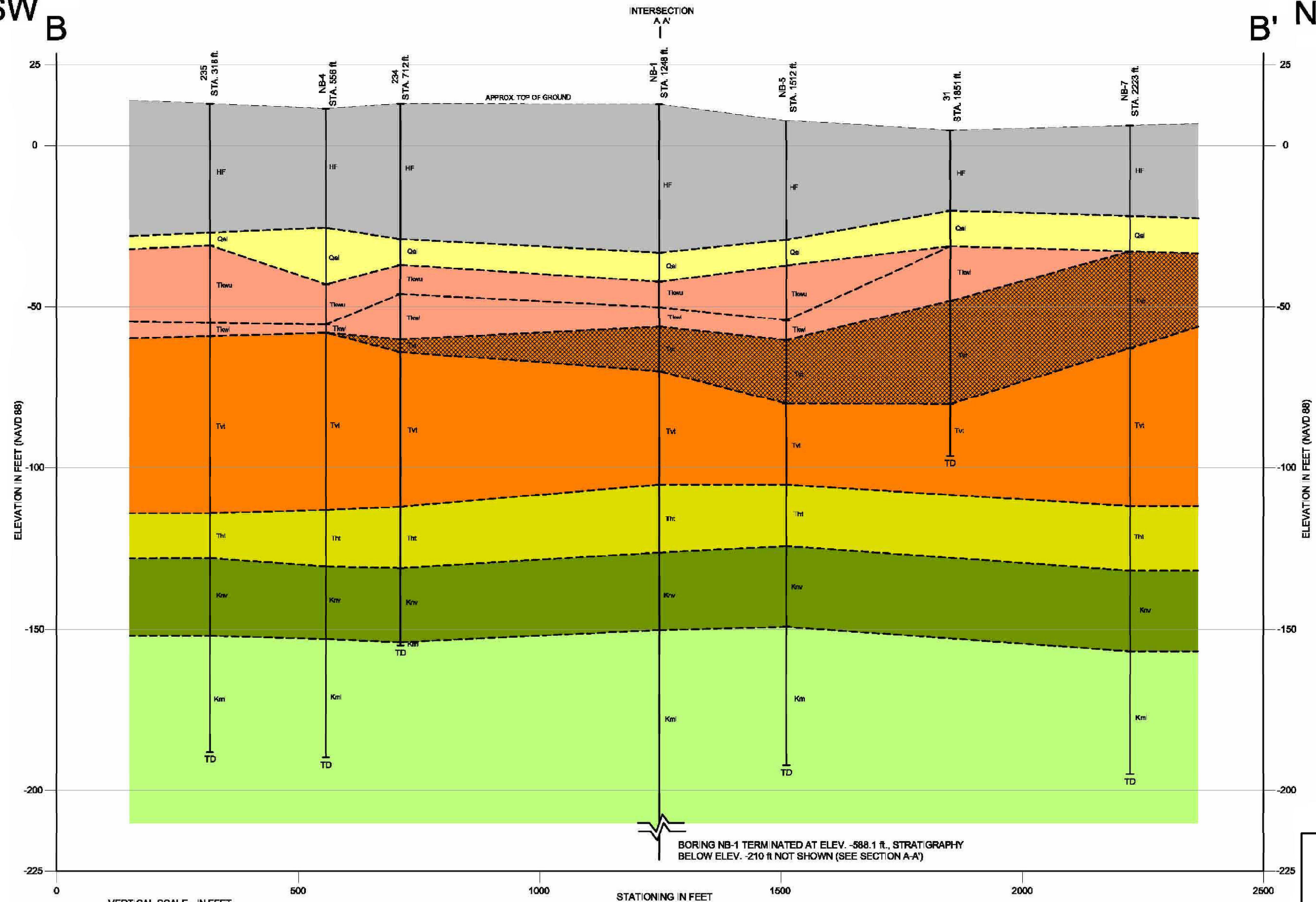


SW
B

B' NE



LEGEND:

- | | |
|------|-----------------------------------|
| HF | - Artificial and Hydraulic Fill |
| Qal | - Alluvium |
| Tlou | - Kirkwood Formation (Upper) |
| Tlow | - Kirkwood Formation (Lower) |
| Tvi | - Vincentown Formation (Oxidized) |
| Tvt | - Vincentown Formation |
| Thi | - Homestown Formation |
| Krv | - Navesink Formation |
| Kml | - Mount Laurel Formation |

NOTES:

- BORING 31 (DAMES & MOORE, 2.6-3)
- BORINGS 234 AND 235 (2.6-2)
- EB AND NB SERIES BORINGS COMPLETED FOR ESPA (2.6-8)
- TD = TERMINATION DEPTH

NOTES (continued):

- SEE FIGURE 2.6-6 FOR SECTION LOCATION
- BORINGS PROJECTED ORTHOGONALLY TO SECTION LINE.
- SOME BORINGS SHOWN ON FIG-2.6-6 NOT INCLUDED DUE TO SHALLOW DEPTH OR PROXIMITY TO OTHER BORINGS.

PSEG Power, LLC
PSEG Site ESPA
Part 3, Environmental Report

Cross Section B-B'
Orientation

FIGURE 2.3-24

Rev 0