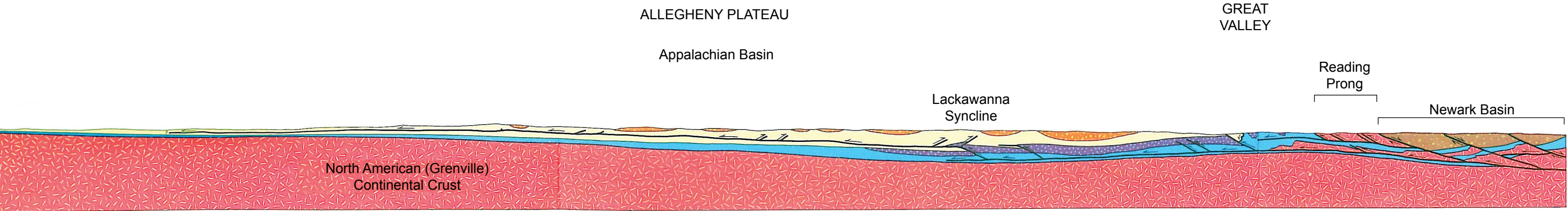


E

E'



**LEGEND**

- Triassic-Jurassic rift basin
- Late Mississippian-Permian molasse and Middle Devonian-Permian molasse (New England)
- Acadian clastic wedge
- Taconian clastic wedge (Upper Ordovician-Silurian Martinsburg-Shawangunk patterned)
- North American platform
- North American basement massifs

from Reference 2.5.1-82

**Location of Cross-Section E-E'**

