

# PUBLIC MEETING ON THE PROPOSED LOW-LEVEL RADIOACTIVE WASTE DISPOSAL RULEMAKING

**Chip Cameron, Facilitator**

**June 10, 2015  
NRC Public Meeting  
Salt Lake City, UT**

# Agenda

<u>Time</u>	<u>Topic</u>	<u>Speaker</u>
6:00 pm	Opening remarks and NRC staff introductions	Chip Cameron
6:10 pm	Discussion of background and need for rulemaking	Andrew Persinko
6:30 pm	Discussion on process for submitting comments	Stephen Dembek
6:45 pm	NRC presentations on proposed rule language (questions and comments from the public after each discussion topic)	David Esh
8:50 pm	Summation and closing remarks	Andrew Persinko

# PUBLIC MEETING ON THE PROPOSED LOW-LEVEL RADIOACTIVE WASTE DISPOSAL RULEMAKING

**Andrew Persinko**  
**Deputy Director**

Division Of Decommissioning, Uranium Recovery, and Waste  
Programs

Office of Nuclear Material Safety and Safeguards

June 10, 2015  
NRC Public Meeting  
Salt Lake City, UT

# Objectives

- To discuss the proposed revisions to the Commission's low-level radioactive waste disposal regulations
- Encourage the submittal of comments on the proposed rule language
- Answer questions and receive comments from the public

# Why are we doing this rulemaking?

To require low-level radioactive waste (LLW) disposal licensees or license applicants to ensure that LLW streams that are significantly different from the LLW streams considered in the current 10 CFR Part 61 regulatory basis can be disposed of safely

# Staff/Commission Interactions

Large quantity of depleted uranium



Staff analyses and recognition



Commission directions



Proposed rulemaking



Compatibility



Agreement state applicability



Outstanding actions



# Purpose and Scope Provisions in Current Rule (10 CFR 61.1(a))



*The regulations in this part establish, for land disposal of radioactive waste, the procedures, criteria, and terms and conditions upon which the Commission issues licenses for the disposal of radioactive wastes containing byproduct, source and special nuclear material received from other persons. Disposal of waste by an individual licensee is set forth in part 20 of this chapter. Applicability of the requirements in this part to Commission licenses for waste disposal facilities in effect on the effective date of this rule will be determined on a case-by-case basis and implemented through terms and conditions of the license or by orders issued by the Commission.*

# ***Federal Register Notice - Proposed Rule for Public Comment***



B. Who would this action affect?

This proposed rule would affect existing and future LLW disposal facilities that are regulated by the NRC or an Agreement State.



# Rationale for Current Rulemaking

- Depleted uranium
  - especially from enrichment facilities
- LLW from DOE operations
- Waste forms/volumes
- Blended LLW
  - greater quantities than previously expected
- New technologies might generate unexpected LLW waste streams

# Public Interactions

- March 20, 2015 – Phoenix, AZ
- April 28, 2015 – Rockville, MD
- May 12, 2015 – Austin, TX
- May 20, 2015 – Webinar on Guidance Document
- June 2, 2015 – Columbia, SC
- June 9, 2015 – Richland, WA
- June 10, 2015 – Salt Lake City, UT
- Post rulemaking actions

## Backup Slides



# CLI-05-20 Memorandum and Order (2005)

*The Commission is aware that in creating the § 61.55 waste classification tables, the NRC considered depleted uranium, but apparently examined only specific kinds of depleted uranium waste streams – “the types of uranium-bearing waste being typically disposed of by NRC licensees” at the time. The NRC concluded that those waste streams posed an insufficient hazard to warrant establishing a concentration limit for depleted uranium in the waste classification tables. Perhaps the same conclusion would have been drawn had the Part 61 rulemaking explicitly analyzed the uranium enrichment waste stream.*

*Continued on next page* 

# CLI-05-20 Memorandum and Order (2005)

*But as Part 61's FEIS indicates, no such analysis was done. Therefore, the Commission directs the NRC staff, outside of this adjudication, to consider whether the quantities of depleted uranium at issue in the waste stream from uranium enrichment facilities warrant amending section 61.55(a)(6) or the section 61.55(a) waste classification tables.*

# Commission Direction: SRM-SECY-08-0147 (2009)

*Previously, in the adjudicatory proceeding for the Louisiana Enrichment Services (LES) license application, the Commission determined that depleted uranium is properly classified as low-level radioactive waste. Although the Commission stated that a literal reading of 10 CFR 61.55(a)(6) would render depleted uranium a Class A waste, it recognized that the analysis supporting this section did not address the disposal of large quantities of depleted uranium. Outside of the adjudication, the staff was tasked to evaluate this complex issue and provide specific recommendations to the Commission.*



# Commission Direction: SRM-SECY-08-0147 (2009)


Two tasks:

- Specify a requirement for a site-specific analysis, technical parameters (i.e., new definitions and performance period) to support such analysis, and develop a guidance document.
- “...in a future budget request, the staff should propose the necessary resources for a comprehensive revision to risk-inform the Part 61 waste classification framework, with conforming changes to the regulations as needed, using updated assumptions and referencing the latest ICRP methodology...” “...This effort should explicitly address the waste classification of depleted uranium...”

# **Commission Redirection: SRM-COMWDM-11-0002 /COMGEA-11-0002 (2012)**

- Flexibility to use current International Commission on Radiological Protection (ICRP) dose methodologies
- Two-tiered period of performance:
  - Tier 1: Compliance period covering reasonably foreseeable future
  - Tier 2: Longer period based on site characteristics and peak dose to a designated receptor, that is not a priori
- Flexibility to establish site-specific waste acceptance criteria based on performance and intruder assessments
- Balance Federal-State alignment and flexibility

# SRM-COMWDM-11-0002 /COMGEA-11-0002 (2012)

*The changes considered as part of the current rulemaking should be limited to revisions to address the four issues identified. The staff should, separate from any actions resulting from this SRM, continue to engage stakeholders to pursue the possibility of the other risk-informed revisions to 10 CFR Part 61 outlined in SECY-10-0165. Continued on next page* 

# SRM-COMWDM-11-0002/ COMGEA-11-0002 (2012)

*Recognizing that the path forward on revisions on the issues outlined in SECY-10-0165 depend in part on the final content of the limited rulemaking, the notation vote paper providing the staff's recommendations on which, if any, of the risk-informed revisions in SECY-10-0165 should be implemented should be submitted to the Commission after completion of the limited rulemaking.*

# SRM-13-0001 (2013)

*The staff should end further efforts associated with SECY-10-0165, “Staff’s Approach to Comprehensive Revision to 10 CFR Part 61,” and proceed with the integrated approach to revising 10 CFR Part 61 as described in SRM-13-0001.*

*Continued on next page* 

# SRM-13-0001 (2013)

*After the limited rulemaking is complete, the staff should provide a CA note to the Commission on the second rulemaking effort for the waste classification tables. The CA note should outline the objectives and timeline for developing the regulatory basis of this second rulemaking, in consideration of the outcome of the near-term limited rulemaking that will precede it. The CA note to the Commission should identify the specific comments that have been received on the need for a second rulemaking, and clearly articulate the basis in accepting or dismissing their comments.*



# Commission Direction: SRM-SECY-13-0075 (2014)

- The proposed rule should be published with a compatibility category “B” applied to the most significant provisions of the revised rule, including the Compliance Period, the Protective Assurance Period and its analytical threshold, and the Waste Acceptance Criteria.
- Realistic intruder scenarios based on expected activities on and around the disposal site at the time of closure
- Licensing decisions are to be based on defense-in-depth (DID) protections (e.g. siting, waste forms) and performance assessment (PA) goals/insights.
  - This combination of DID and PA is the safety case for licensing.
- Thorough review of guidance by LLW community

# 10 CFR Part 61 Rulemaking Process and Comment Submittal

**Stephen Dembek**  
Project Manager

Division Of Decommissioning, Uranium Recovery, and  
Waste Programs

Office of Nuclear Material Safety and Safeguards

June 10, 2015  
NRC Public Meeting  
Salt Lake City, UT

# 10 CFR Part 61

- Why Rulemaking?
- Draft Guidance Document (NUREG-2175)
- Timeline
- Where to Get Copies
- Comment Submittal

# Why Rulemaking?

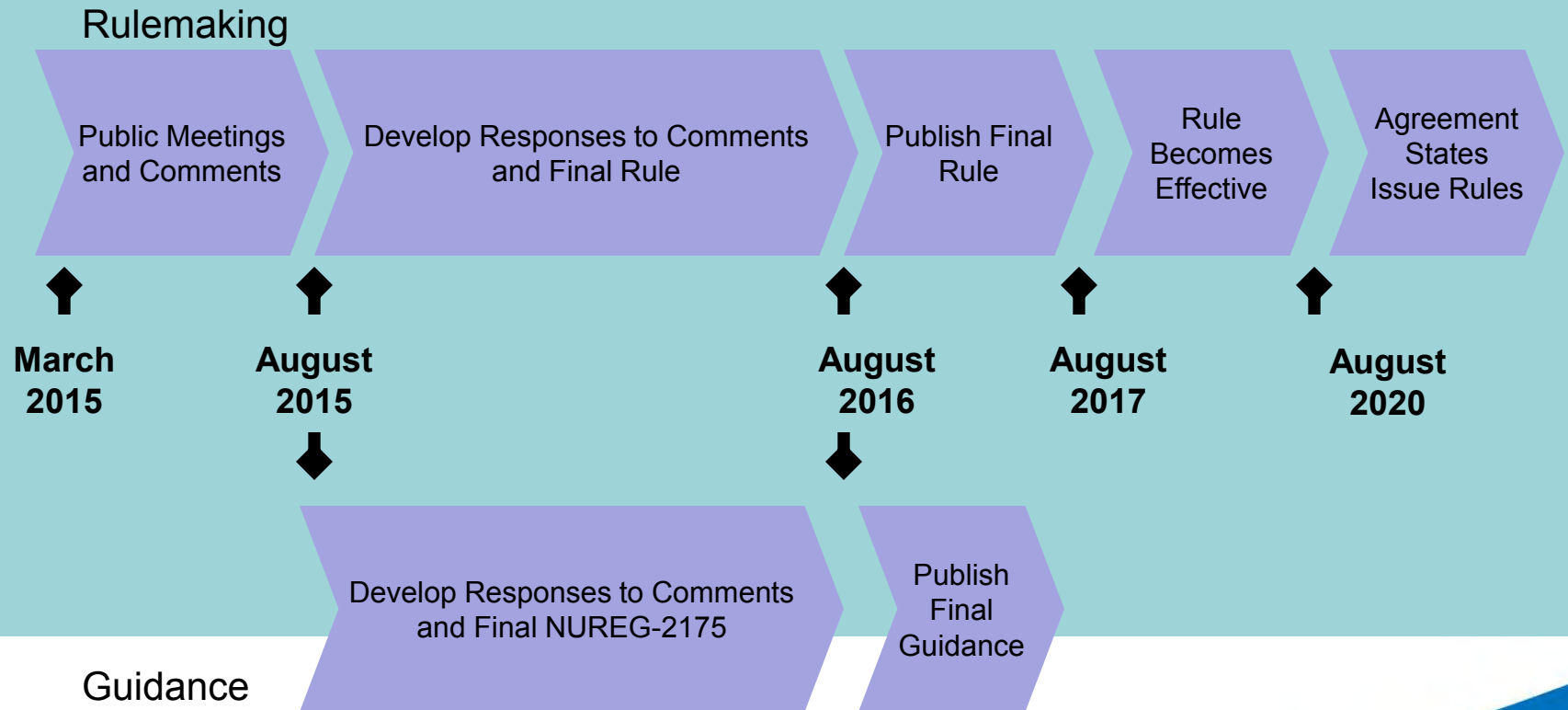
- Implement Commission policy
- Make provisions generally applicable
- Public process
- Address lessons learned and recommendations
- 10 CFR Part 61:
  - To require LLW disposal licensees or applicants to ensure that LLW streams that are significantly different from the LLW streams considered in the current 10 CFR Part 61 regulatory basis can be disposed of safely

# Draft Part 61 Guidance

The Guidance for Conducting Technical Analyses for 10 CFR Part 61 (NUREG-2175) provides:

- ✓ Flowcharts, NRC staff recommendations, and examples for how licensees can develop high-quality technical analyses
- ✓ Guidelines for what licensees or applicants should include and what regulators should review for each type of analysis
- ✓ Suggested references, screening tools, and case studies

# What is the Timeline?



Published for comment March 26, 2015  
Comment period is 120 days, closes July 24, 2015

Note: Dates are approximate



# Get Your Copies Here...

[www.nrc.gov](http://www.nrc.gov)

**Radioactive Waste**

**Low-Level Waste Disposal**

**Site-Specific Analysis  
Rulemaking**

Redlined versions of the proposed changes, the complete Guidance document, and the Proposed Rule and Guidance Federal Register Notices are available at the Public NRC website.

Both documents are also available at [www.regulations.gov](http://www.regulations.gov),  
Docket ID NRC-2011-0012 (Rule)  
Docket ID NRC-2015-0003 (NUREG-2175)

In NRC's Agencywide Document Access and Management System (ADAMS)  
ML14289A152 (Rule)  
ML15056A516 (NUREG-2175)  
  
Public Document Room  
at NRC Headquarters in  
Rockville, MD

# Comment Submittal: Proposed Rule – Low-Level Radioactive Waste Disposal

- Please include Docket ID NRC-2011-0012 in the subject line of your comments.
- **Federal Rulemaking Website:** Go to <http://www.regulations.gov> and search for documents filed under Docket ID NRC-2011-0012.
- **Mail comments to:** Secretary, U.S. Nuclear Regulatory Commission, Washington, DC 20555-0001, ATTN: Rulemakings and Adjudications Staff.
- **E-mail comments to:** [Rulemaking.Comments@nrc.gov](mailto:Rulemaking.Comments@nrc.gov). If you do not receive a reply e-mail confirming that we have received your comments, contact us directly at 301-415-1677.
- **Hand-deliver comments to:** 11555 Rockville Pike, Rockville, Maryland 20852, between 7:30 am and 4:15 pm Federal workdays. (Telephone 301-415-1677)
- **Fax comments to:** Secretary, U.S. Nuclear Regulatory Commission at 301-415-1101.

# Comment Submittal Implementation Guidance for 10 CFR Part 61

- Please include Docket ID NRC-2015-0003 in the subject line of your comments.
- **Federal Rulemaking Web Site:** Go to <http://www.regulations.gov> and search for documents filed under Docket ID NRC-2015-0003. Click on the comment icon and complete the Web form.
- **Mail comments to:** Cindy Bladey, Chief, Rules, Announcements, and Directives Branch (RADB), Office of Administration, Mail Stop: 3WFN-06-A44M, U.S. Nuclear Regulatory Commission, Washington, DC 20555-0001.

# Questions?

## Contacts:

**Stephen Dembek**

**[Stephen.Dembek@nrc.gov](mailto:Stephen.Dembek@nrc.gov)**

**(301) 415-2342**

**Gary Comfort**

**[Gary.Comfort@nrc.gov](mailto:Gary.Comfort@nrc.gov)**

**(301) 415-8106**

# Overview of Proposed 10 CFR Part 61 Technical Requirements and Guidance

David Esh

Division of Decommissioning, Uranium Recovery, & Waste Programs  
Office of Nuclear Material Safety and Safeguards

June 10, 2015  
NRC Public Meeting  
Salt Lake City, UT

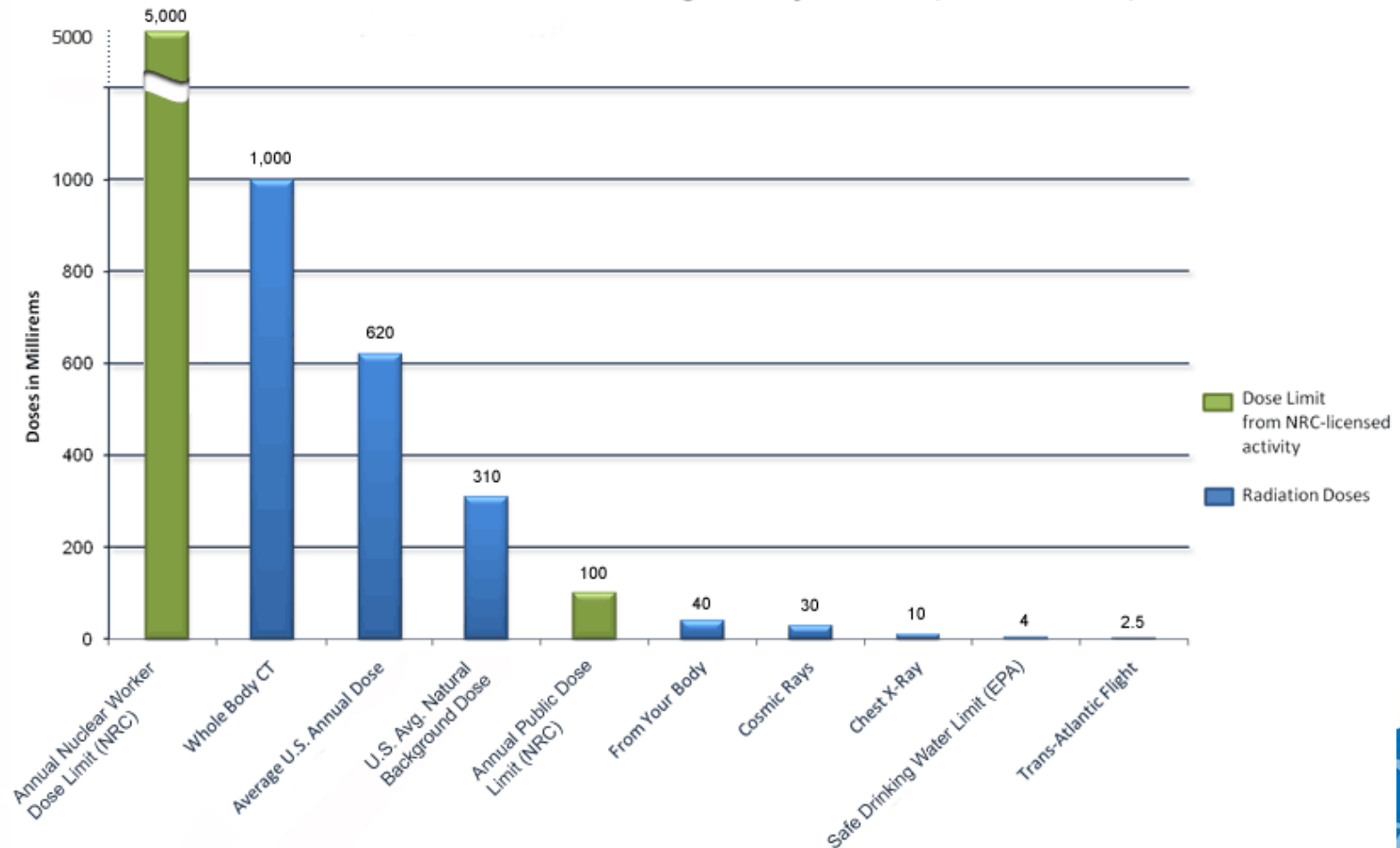
# Summary

- Overview
- Rule Topics
  - Analyses timeframes
  - Performance assessment (PA)
  - Intruder assessment (IA)
  - Protective assurance period analyses
  - Performance period analyses
  - Safety case / Defense-in-depth (DID)
  - Waste acceptance criteria (WAC)
  - Other
- Guidance
  - Overview
  - Select examples



# Radiation Doses and Limits

**Radiation Doses and Regulatory Limits (in Millirems)**



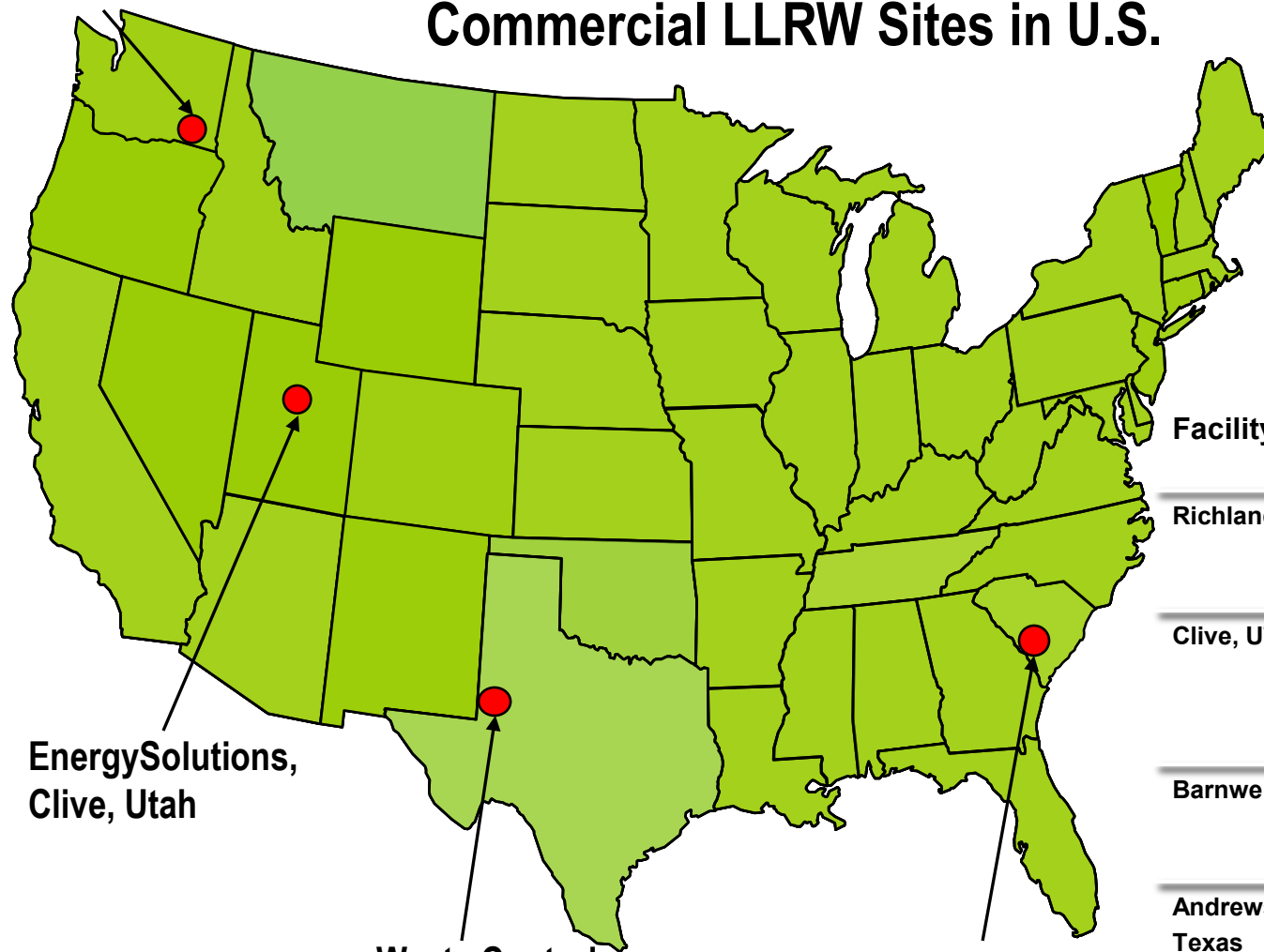
# What is in the Proposed Rule?

The NRC is proposing to amend its regulations that govern low-level radioactive waste (LLRW) disposal facilities to require:

- ✓ New and revised site-specific technical analyses to demonstrate that the performance objectives are met.
- ✓ To permit the development of site-specific criteria for LLRW acceptance based on the results of these analyses.
- ✓ To facilitate implementation and to better align the requirements with current health and safety standards.
- ✓ To ensure licensing decisions are based on defense-in-depth protections.

This proposed rule would affect LLRW disposal licensees or license applicants that are regulated by the NRC or the Agreement States.

# Who will perform these Technical Analyses? Commercial LLRW Sites in U.S.



EnergySolutions,  
Clive, Utah

Waste Control  
Specialists,  
Andrews, TX

EnergySolutions,  
Barnwell SC

Facility	Waste	Compact Restrictions
Richland, WA	A, B, C	11 Western states in 2 LLW Compacts only
Clive, UT	A only	None, all US generators OK (Compacts must approve)
Barnwell, SC	A, B, C	SC, NJ, CT only (Atlantic Compact)
Andrews Cty, Texas	A, B, C	Texas and VT only (out-of-compact waste can be authorized for disposal by TX LLW Compact)

 Operating facility

*How do I develop the right scenarios for my performance assessment?*

*Do I need to do a performance period analysis for my site?*

*How can I demonstrate that my site is stable for 10,000 years?*

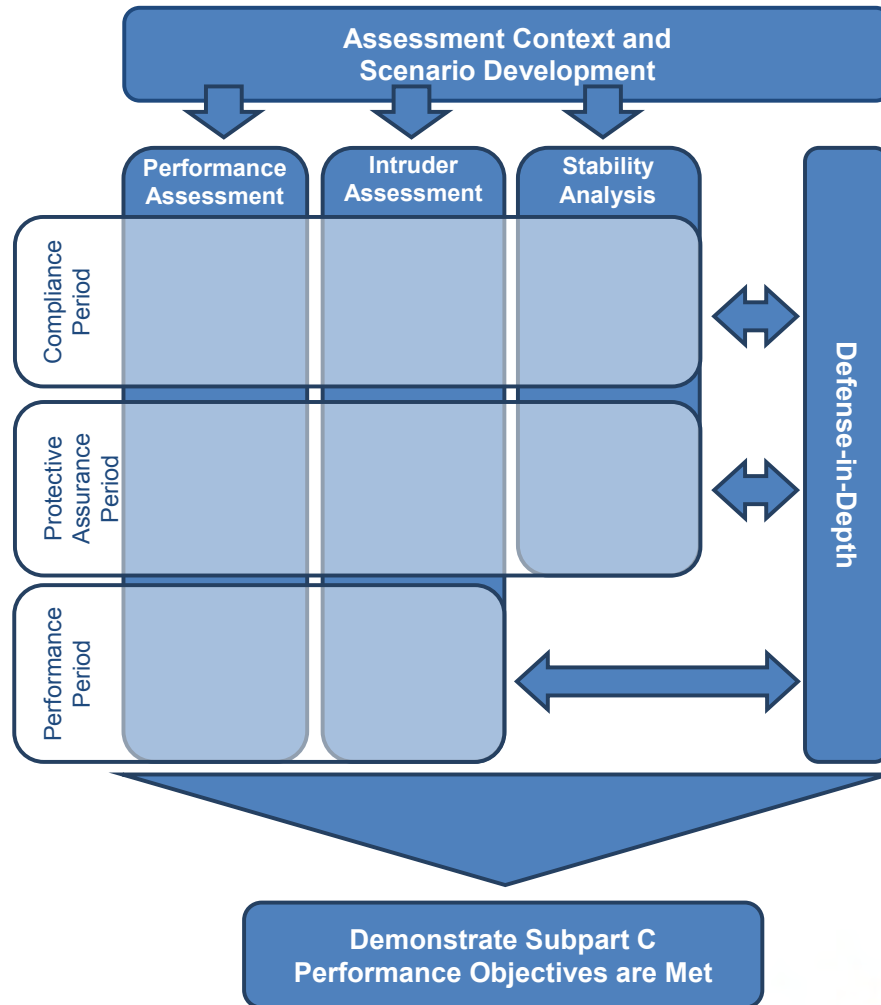
*How do I demonstrate that I have minimized doses for the protective assurance period?*

*What should I do to demonstrate my facility includes defense-in-depth protections?*

*How do I develop Waste Acceptance Criteria for my site?*



# Context for Analyses



# Rule Topics

- Analyses timeframes
- Performance assessment (PA)
- Intruder assessment (IA)
- Protective assurance period analyses
- Performance period analyses
- Safety case / Defense-in-depth (DID)
- Waste acceptance criteria (WAC)
- Other

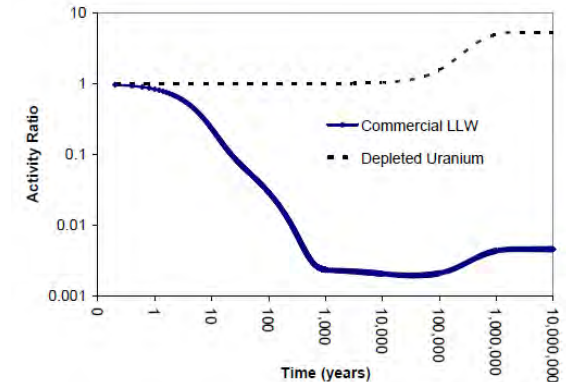


# Analyses Timeframes

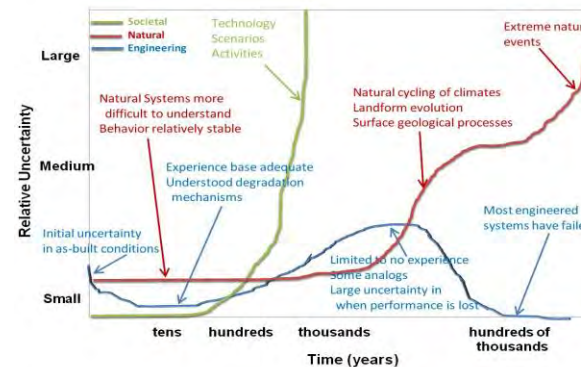
- Complex issue
- Topic with extensive stakeholder input
- Staff developed white paper for initial recommendation (ML111030586)
- Commission directed changes to staff recommendation in SRM-SECY-13-0075
- Seek stakeholder input, especially on compatibility designation

# Analyses Timeframes - Considerations

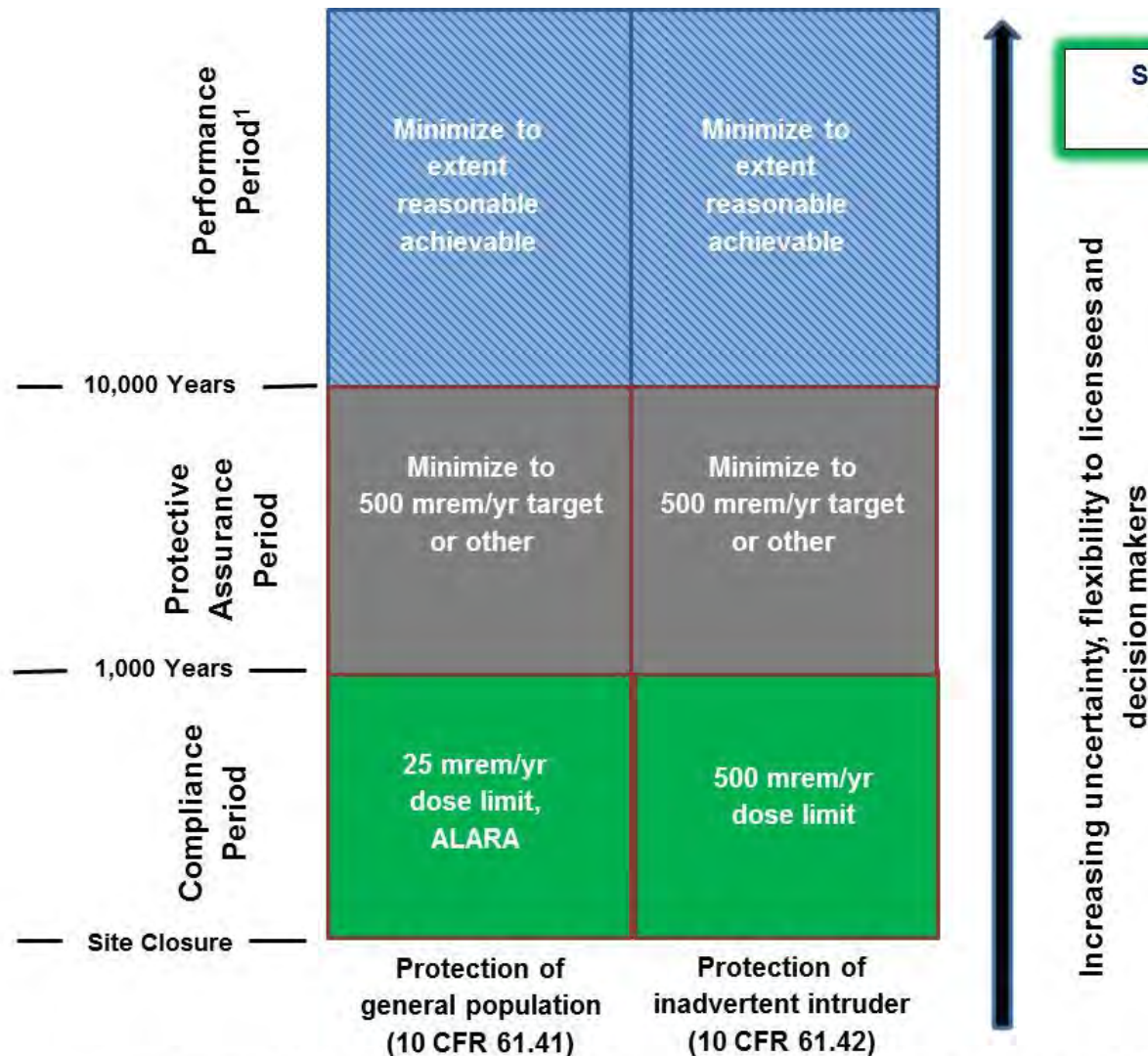
- Waste characteristics
- Uncertainties
- Domestic experience
- International experience
- Policy



Material	Hazard	Hazard Duration	Action	Compliance Period
EPA RCRA	Chem	∞	Disposal	30+ yrs
Uranium Mill Tailings	Rad	LL	Remediate	200 yrs (<1000 yrs)
Part 20 Decommission Criteria	Rad	VSL	Release	1000 yrs
DOE Order 435.1	Rad	SL	Disposal	1000 yrs
LLW Disposal Facility	Rad	SL	Disposal	[10,000 yrs]
EPA Underground Injection	Chem	∞	Disposal	10,000 yrs
DOE WIR Determinations	Rad	SL-LL	Remediate	DOE: 1000 yrs NRC: 10,000 yrs
DOE Siting Guidelines (10 CFR 960)	Rad	LL	Screening Action	100,000 yrs
EPA HLW/SNF/TRU Generic Standards	Rad	LL	Disposal	10,000 yrs
EPA HLW/SNF Site-Specific Standards	Rad	LL	Disposal	10,000 yrs – 15 mrem 1,000,000 yrs – 100 mrem



# What are the timeframes and dose limits for the analyses?



SRM-SECY-13-0075  
3-tier approach

<sup>1</sup> Only applicable if concentrations on a facility-averaged basis are above 10 CFR 61.13(e) Table A

# Analyses Timeframes

**Long-lived waste** means waste containing radionuclides (1) where more than 10 percent of the initial activity of a radionuclide remains after 10,000 years (e.g., long-lived parent), (2) where the peak activity from progeny occurs after 10,000 years (e.g., long-lived parent – short-lived progeny), or (3) where more than 10 percent of the peak activity of a radionuclide (including progeny) within 10,000 years remains after 10,000 years (e.g., short-lived parent – long-lived progeny).

**Compliance period** is the time out to 1,000 years after closure of the disposal facility.

**Protective assurance period** is the period from the end of the compliance period through 10,000 years following closure of the site.

**Performance period** is the timeframe established for considering waste and site characteristics to evaluate the performance of the site after the protective assurance period.

# Analyses Timeframes

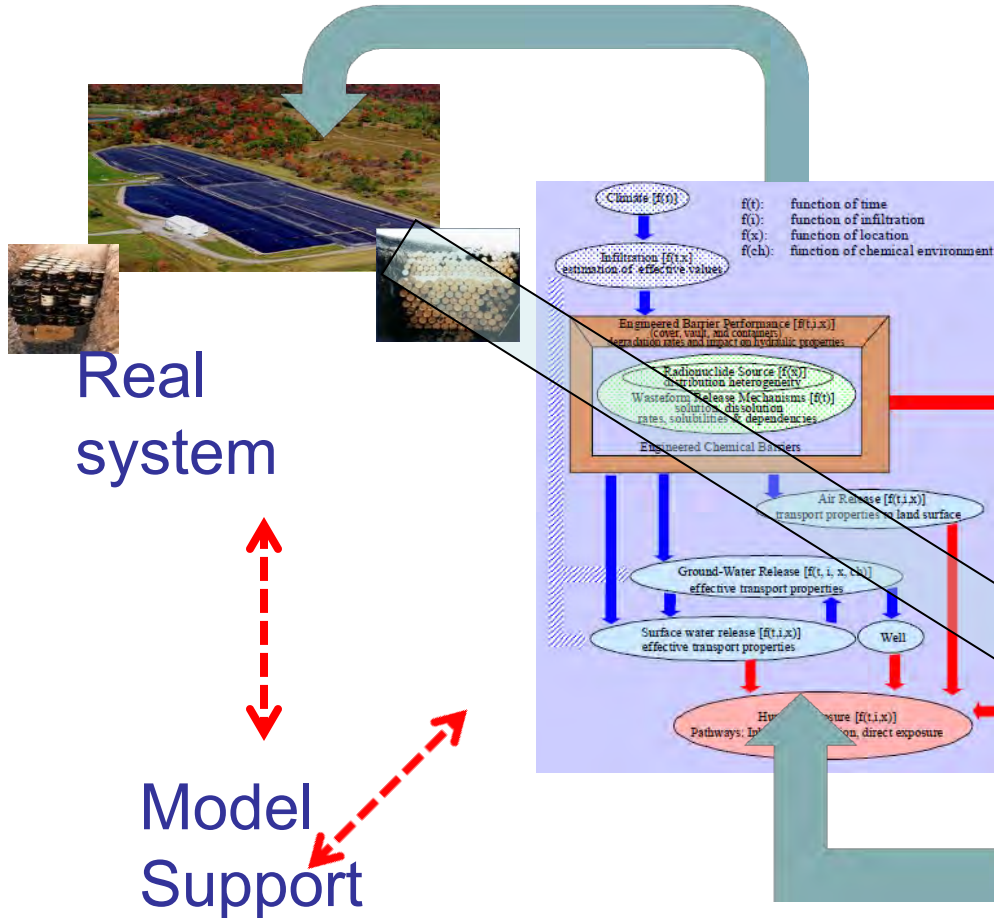
## Seeking feedback on:

- Overall approach
- Compatibility
- Long-lived waste definition

# Comments and questions

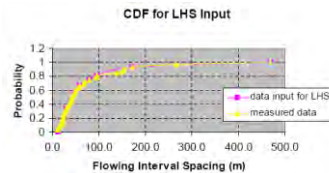
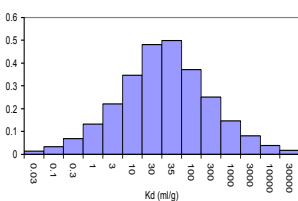
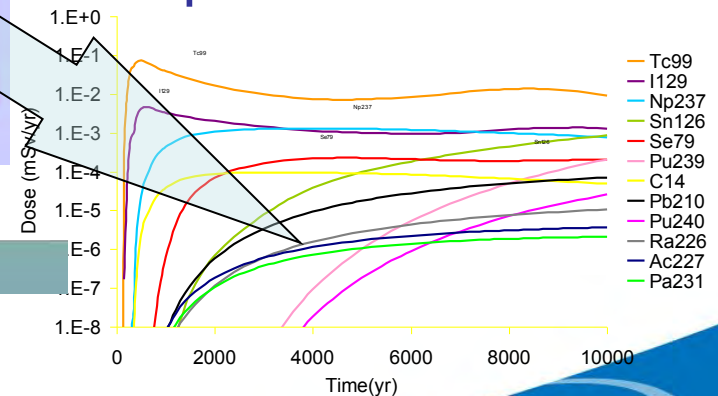


# Performance Assessment

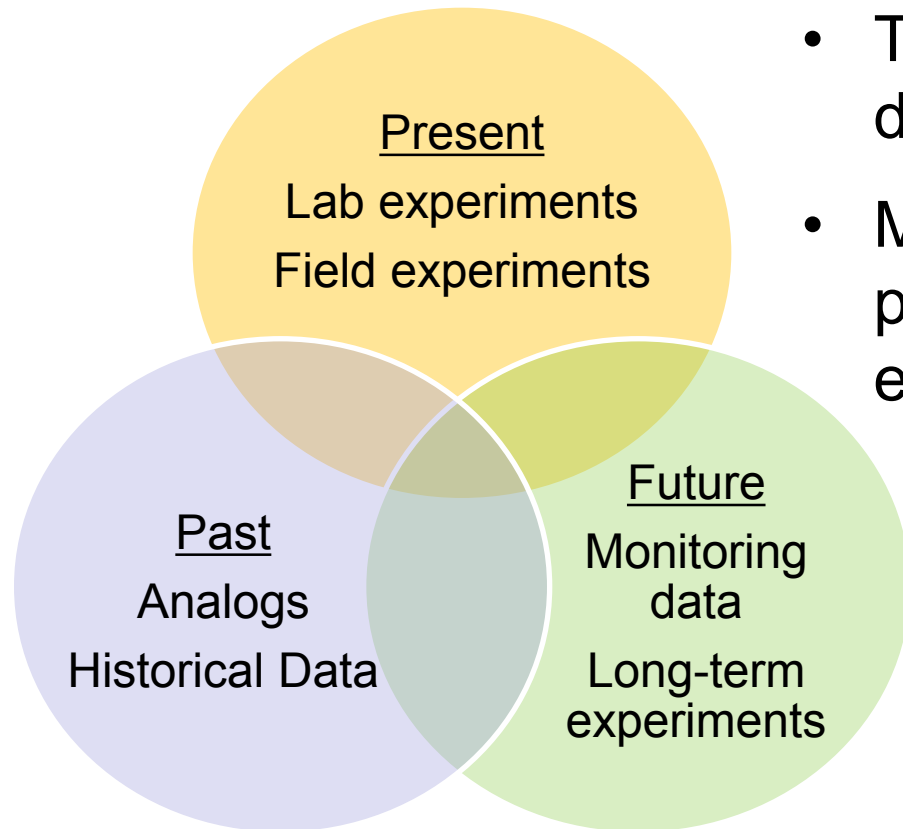


Mathematical  
model  
(abstraction)

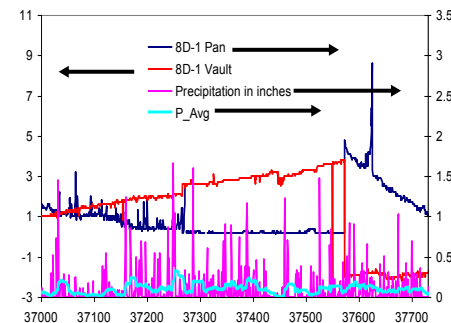
Estimated future  
performance



# Model Support - Past, Present, and Future Conditions



- The real world can be highly dynamic.
- Model support should be provided for the full range of expected future conditions.



# Performance Assessment

- Performance assessment is not a new topic – renaming of technical analyses
- Proposed modifications modernize the technical analyses requirements
- New requirements in 61.13:
  - Scope (features, events, and processes)
  - Uncertainty and variability
  - Model support
- Requirement to update the performance assessment at closure
- Modified siting characteristics consistent with disposal of long-lived waste

**IMPLICIT**



**EXPLICIT**

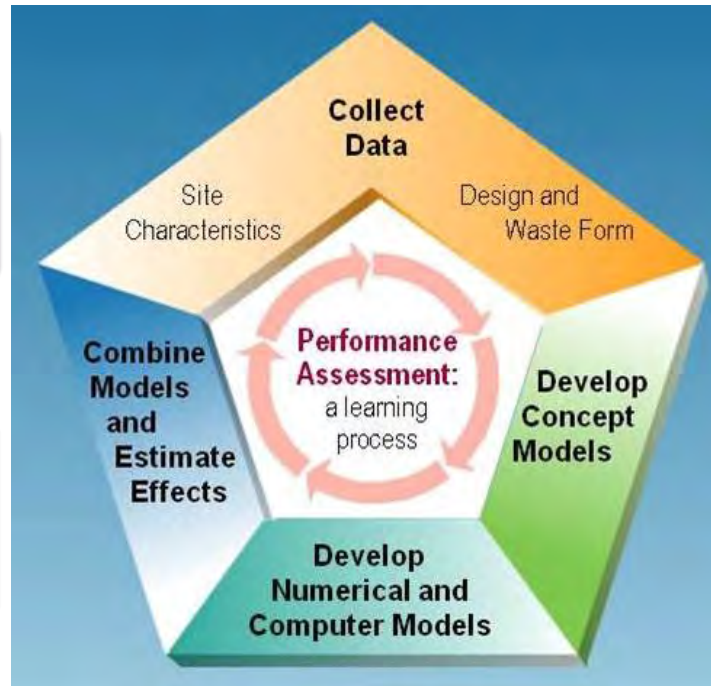
# Performance Assessment

**61.28: Updated PA at closure**

**61.50: Modified as a result of PA requirements for long-lived waste disposal**

**61.58: WAC “or” approach developed that allows the use of PA results**

**61.13: Provide model support and consider alternative conceptual models**



**61.13: Features, events, and processes (scope)**

**61.13: Results of PA used in DID analysis**

**61.13: Explicit consideration of uncertainty and variability**

# Performance Assessment

***Performance assessment*** is an analysis that (1) identifies the features, events, and processes that might affect the disposal system; (2) examines the effects of these features, events, and processes on the performance of the disposal system; and (3) estimates the annual dose to any member of the public caused by all significant features, events, and processes.



# Hazard Map Example



Figure B-3: Areas of potential flooding that may require additional site characterization and analysis (FEMA, 2012; FEMA, 1998; ESRI, 2008a; ESRI, 2008b)



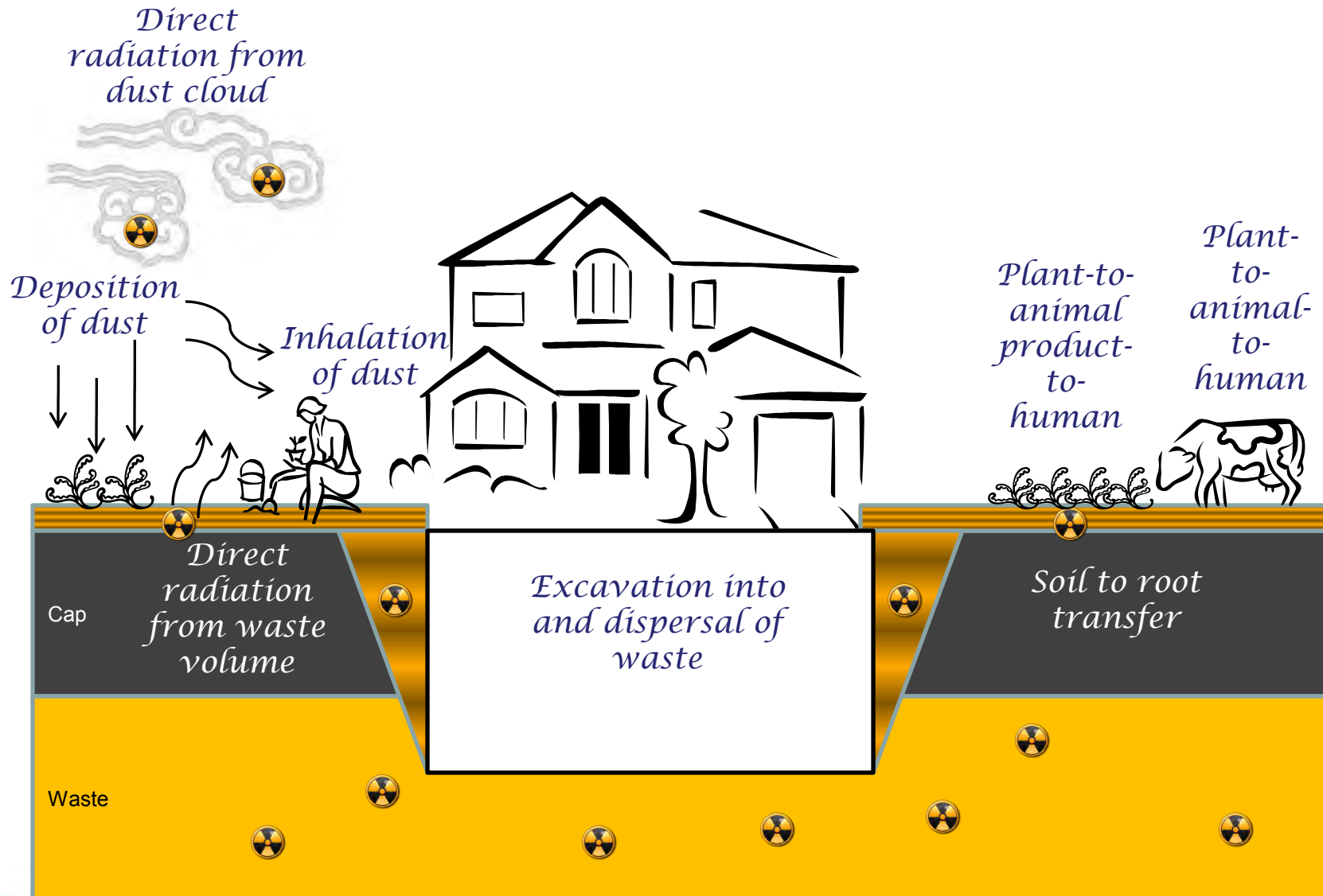
# Performance Assessment

## Seeking feedback on:

- Suitability of using technical analyses to evaluate the disposal of long-lived waste
- New technical analyses requirements (61.13)
- Modifications to siting characteristics requirements (61.50)
- Requirement to update the PA at closure (61.28)

# Comments and questions

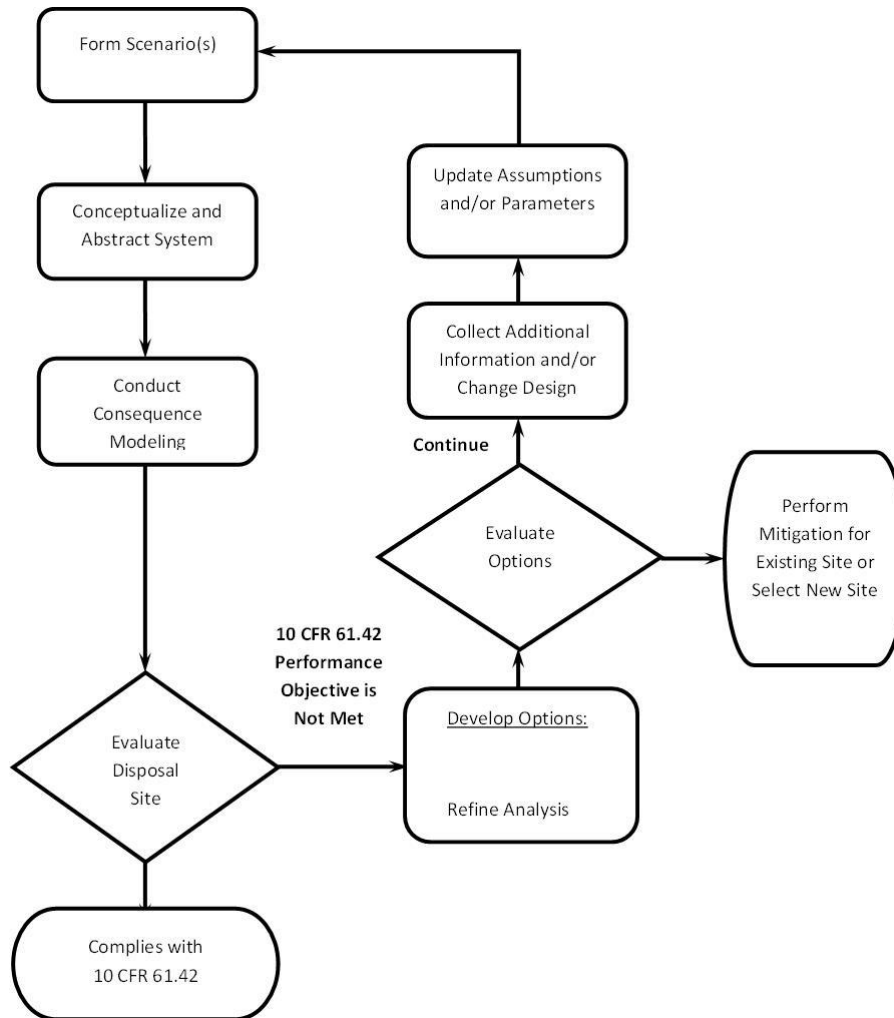
# Intruder Assessment



# Inadvertent Intruder Assessment

- Inadvertent Intruder Assessment is a new analysis
- Proposed modifications require a stylized analysis instead of solely relying on waste classification and the underlying generic analysis used to develop waste classification
- New requirements in 61.13:
  - Scope
  - Intruder Barriers
  - Uncertainty and variability
- Performance objective in 61.42
- Requirement to update intruder assessment at closure

# Intruder Assessment



- Requires an intruder assessment analysis
- Based on intrusion scenarios that are realistic and consistent with expected activities in and around the disposal site at the time of site closure
- Dose limit of 500 mrem for compliance period

# Inadvertent Intruder Assessment

## Seeking feedback on:

- Revised and new definitions for intruder assessment (61.2)
- Revised concepts on intruder assessment (61.7)
- New technical analyses requirements (61.13)
- Requirement to update intruder assessment at closure (61.28)
- Revised performance objective for intruder assessment (61.42)



# Comments and questions

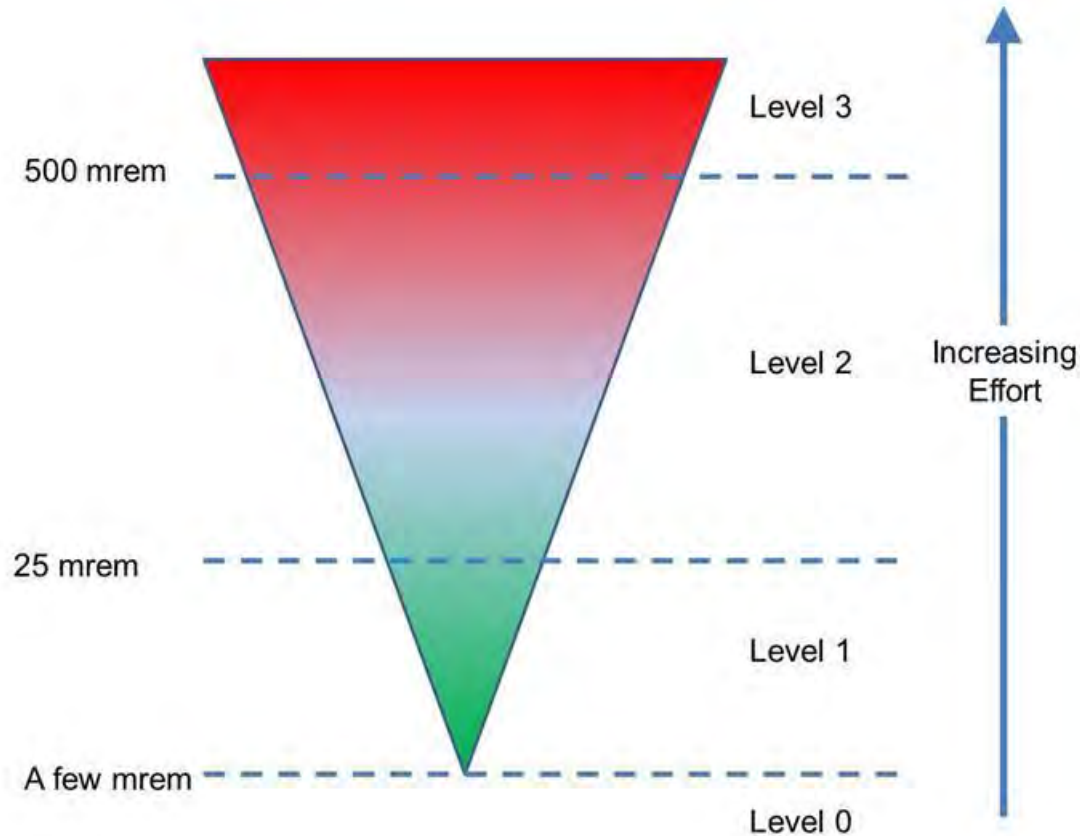
# Protective Assurance Analyses

- Second tier of the analyses timeframe
- Required for all types of low-level waste
- Proposed as an optimization type process, rather than comparison to a dose limit
- Goal → minimize doses
- Simplest approach is to extend the performance assessment and intruder assessment analyses
- Approach in guidance:

**High risk = High effort**

**Low risk = Low effort**

# Protective Assurance Analyses



**Figure 6-1 Analyses Framework for the Minimization Process for the Protective Assurance Period Analyses Applied to 10 CFR 61.41(b)**

# Protective Assurance Analyses

## Seeking feedback on:

- Protective assurance analyses requirements
- Extension of PA/IA to the protective assurance period
- Optimization approach
- Minimization target
- Risk-based discounting

# Comments and questions

# Performance Period Analyses

- Applicable to times after 10,000 years
- Applies only if sufficient waste is present (Table A)
- Concentrations based on disposal site average using sum of fractions approach
- Assess how the disposal site limits long-term impacts
- Identify design features and site characteristics
- Minimize impacts to the extent reasonably achievable



# Performance Period Analyses

**Table A - Average Concentrations of Long-lived Radionuclides Requiring Performance Period Analyses**

Radionuclide	Concentration (Ci/m <sup>3</sup> ) <sup>1</sup>
C-14	0.8
C-14 in activated metal	8
Ni-59 in activated metal	22
Nb-94 in activated metal	0.02
Tc-99	0.3
I-129	0.008
Long-lived alpha-emitting nuclides <sup>2, 3</sup>	10
Pu-241 <sup>3</sup>	350
Cm-242 <sup>3</sup>	2,000

<sup>1</sup> Values derived from § 61.55 Class A limits.

<sup>2</sup> Includes alpha-emitting transuranic nuclides as well as other long-lived alpha-emitting nuclides.

<sup>3</sup> Units are nanocuries per gram.

# Performance Period Analyses

(e) Analyses that assess how the disposal site limits the potential long-term radiological impacts, consistent with available data and current scientific understanding. The analyses shall be required for disposal sites with waste that contains radionuclides with average concentrations exceeding the values listed in table A of this paragraph, or if necessitated by site-specific conditions. For wastes containing mixtures of radionuclides found in table A, the total concentration shall be determined by the sum of fractions rule described in paragraph 61.55(a)(7). The analyses must identify and describe the features of the design and site characteristics that will demonstrate that the performance objectives set forth in §§ 61.41(c) and 61.42(c) will be met.

# Performance Period Example

**Table 7-1 Long-lived Isotopes Potentially Present in LLW Performance Assessment Inventories**

Isotope	Half-life (yr)	Long-lived		LLW PA Inventory <sup>1</sup>	Isotope	Half-life (yr)	Long-lived		LLW PA Inventory <sup>1</sup>
		Parent	Progeny <sup>2</sup>				Parent	Progeny <sup>2</sup>	
Al-26	$7.17 \times 10^5$	X			U-233	$1.59 \times 10^5$	X	Th-229	Yes
C-14	5,730	X		Yes	U-234	$2.45 \times 10^5$	X	Th-230	Yes
Cl-36	$3.01 \times 10^5$	X		Yes	U-235	$7.038 \times 10^8$	X	Pa-231	Yes
K-40	$1.3 \times 10^9$	X			U-236	$2.342 \times 10^8$	X	Th-232	Yes
Ni-59	$7.5 \times 10^4$	X		Yes	U-238	$4.468 \times 10^9$		U-234	Yes
Se-79	$1.1 \times 10^6$	X			Np-237	$2.14 \times 10^6$	X	U-233	Yes
Zr-93	$1.53 \times 10^6$	X			Pu-238	87.7		U-234	Yes
Nb-94	$2.0 \times 10^4$	X			Pu-239	$2.41 \times 10^4$	X	U-235	Yes
Tc-99	$2.14 \times 10^5$	X		Yes	Pu-240	$6.54 \times 10^3$	X	U-236	Yes
Pd-107	$6.56 \times 10^6$	X			Pu-241	14.4		Np-237	Yes
Sn-126	$1 \times 10^5$	X			Pu-242	$3.76 \times 10^5$	X	U-238	Yes
I-129	$1.6 \times 10^7$	X		Yes	Pu-244	$8.26 \times 10^7$	X	Pu-240	
Cs-135	$3 \times 10^6$	X			Am-241	432		Np-237	Yes
Sm-146	$1 \times 10^8$	X			Am-242m	16 hr		U-234	Yes
Pm-147	2.62		Sm-147		Am-243	$7.38 \times 10^3$	X	Pu-239	Yes
Sm-147	$1.06 \times 10^{11}$	X			Cm-242	0.446		U-234	
Eu-152	13.3		Gd-152		Cm-243	28.5		Am-243	
Gd-152	$1.08 \times 10^{14}$	X			Cm-244	18.1		Pu-240	
Ra-226	1,600	X		Yes	Cm-245	$8.5 \times 10^3$	X	Np-237	
Th-229	$7.3 \times 10^3$	X		Yes	Cm-247	$1.56 \times 10^7$	X	Am-243	
Th-230	$7.7 \times 10^4$	X	Ra-226	Yes	Cm-248	$3.39 \times 10^5$	X	Pu-244	
Th-232	$1.41 \times 10^{10}$	X		Yes	Cf-249	351		Cm-245	
Pa-231	$3.28 \times 10^4$	X			Cf-251	898		Am-243	
U-233	$1.59 \times 10^5$	X	Th-229	Yes	Cf-252	2.64		Cm-248	

# Performance Period Analyses

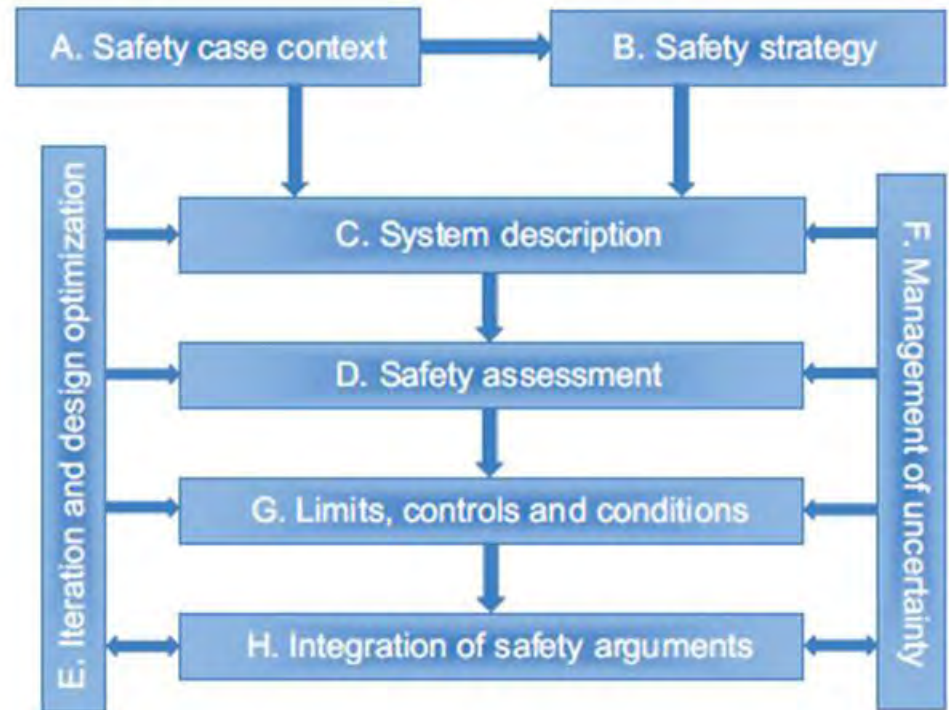
## Seeking feedback on:

- Approach to the performance period analyses
- Use of Class A values as a trigger for the requirements
- Averaging approach to concentrations
- Minimization to the extent reasonably achievable
- The requirement to identify the features that contribute to limiting long-term impacts

# Comments and questions

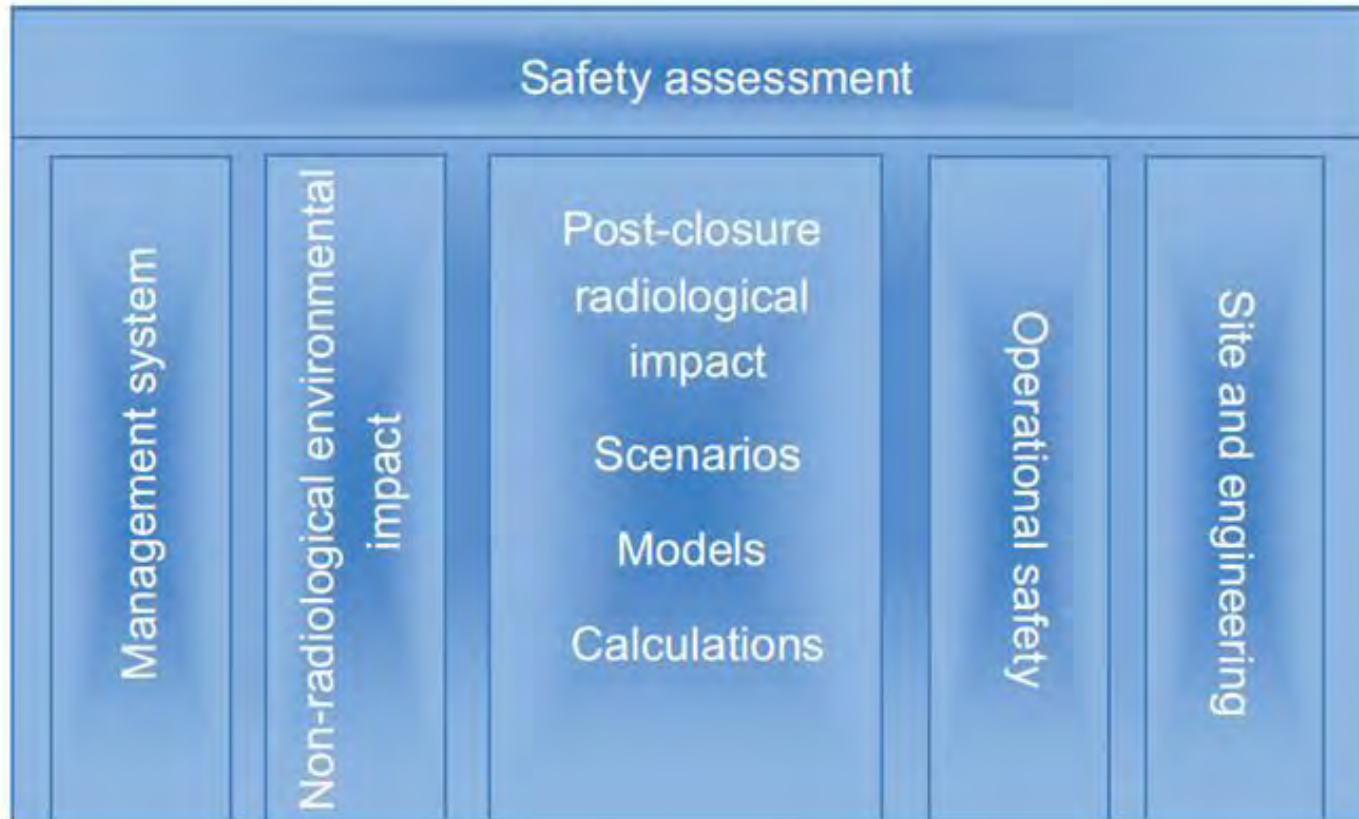
# Safety Case - IAEA

- IAEA approach to safety case is comprehensive
- Safety assessment is an important component but is one of many components
- Specific Safety Guide No. SSG-23



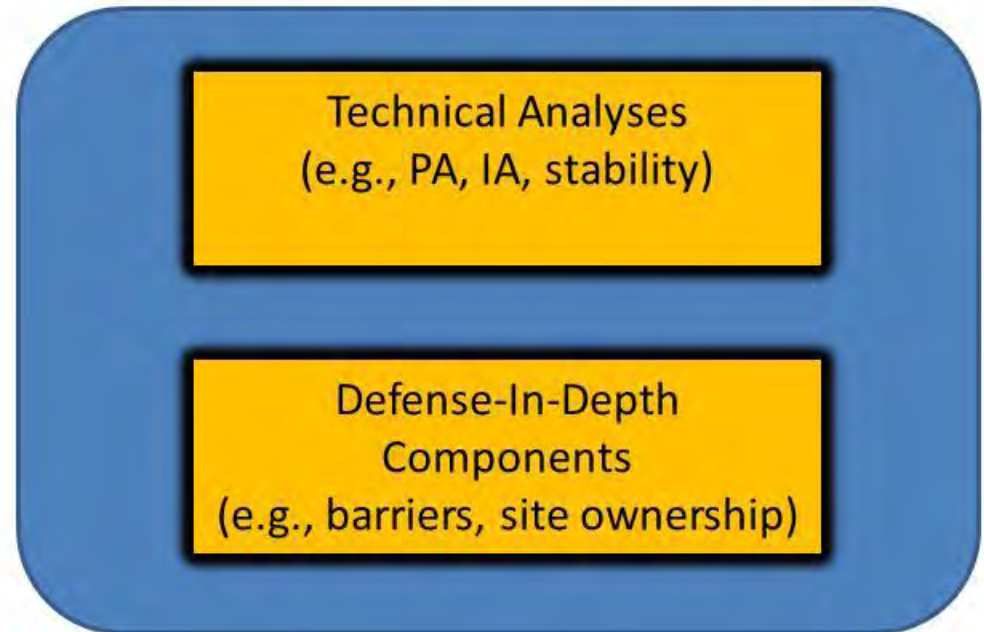


# Safety Assessment - IAEA



- Proposed rule includes discussion of safety case and defense-in-depth (DID) protections
- Explains how the combination of DID and performance assessment (i.e., safety case) should be used to support the licensing decision

Safety Case (for long-term safety) in 10 CFR Part 61



**Defense-in-Depth:**

The use of multiple, independent, and redundant layers of defense so that no single layer, no matter how robust, is exclusively relied upon for safety.

# Safety Case – 61.2

**Safety case** is a collection of information that demonstrates the assessment of the safety of a waste disposal facility. This includes technical analyses, such as the performance assessment and intruder assessment, but also includes information on defense-in-depth and supporting evidence and reasoning on the strength and reliability of the technical analyses and the assumptions made therein. The safety case also includes description of the safety relevant aspects of the site, the design of the facility, and the managerial control measures and regulatory controls.

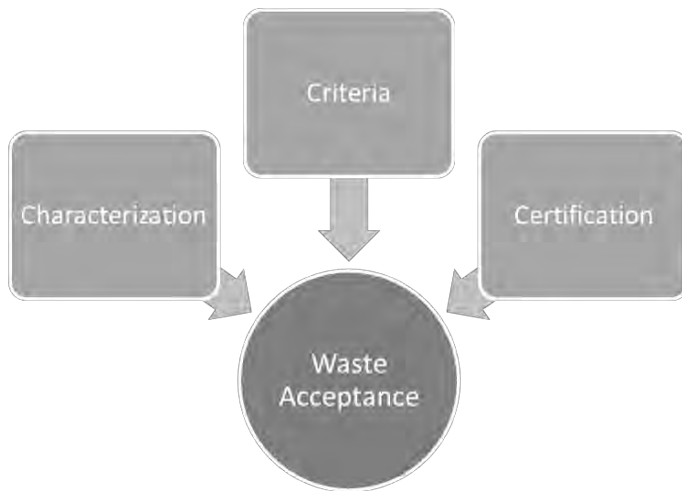
# Safety Case/Defense-in-Depth

## Seeking feedback on:

- Definitions for safety case and defense-in-depth (61.2)
- Concepts regarding safety case and defense-in-depth (61.7)
- Requirements for a safety case (61.10)
- New technical analyses requirements for defense-in-depth (61.13)
- Requirement to update defense-in-depth at closure (61.28)

# Comments and questions

# Waste Acceptance



- New requirements for developing waste acceptance criteria (WAC) using either:
  - 61.55 waste classification system, or
  - Site-specific WAC
- New 61.58 focuses on three areas:
  - WAC
  - Waste Characterization
  - Waste Certification



# Waste Acceptance – 61.7

(e) *Waste acceptance.* Demonstrating compliance with the performance objectives also requires a determination of criteria for the acceptance of waste. The criteria can be determined from the results of the technical analyses that demonstrate compliance with the performance objectives for any land disposal facility **or**, for a near-surface disposal facility, the waste classification requirements of subpart D of this part.

# Waste Acceptance

## Seeking feedback on:

- Concepts regarding waste acceptance (61.7)
- Requirements for waste acceptance (61.58)

# Comments and questions

# Guidance Document

- Overview/context (Chapter 1)
- Examples, tables, figures
- Use of other NRC guidance documents (Chapter 11)
- 434 pages, 18 pages of references
- Glossary
- Appendices (e.g. hazard maps, FEPs)

ML15056A516 Guidance for Conducting Technical Analyses  
for 10 CFR Part 61

---

Guidance for Conducting  
Technical Analyses for  
10 CFR Part 61

Draft Report for Public Comment

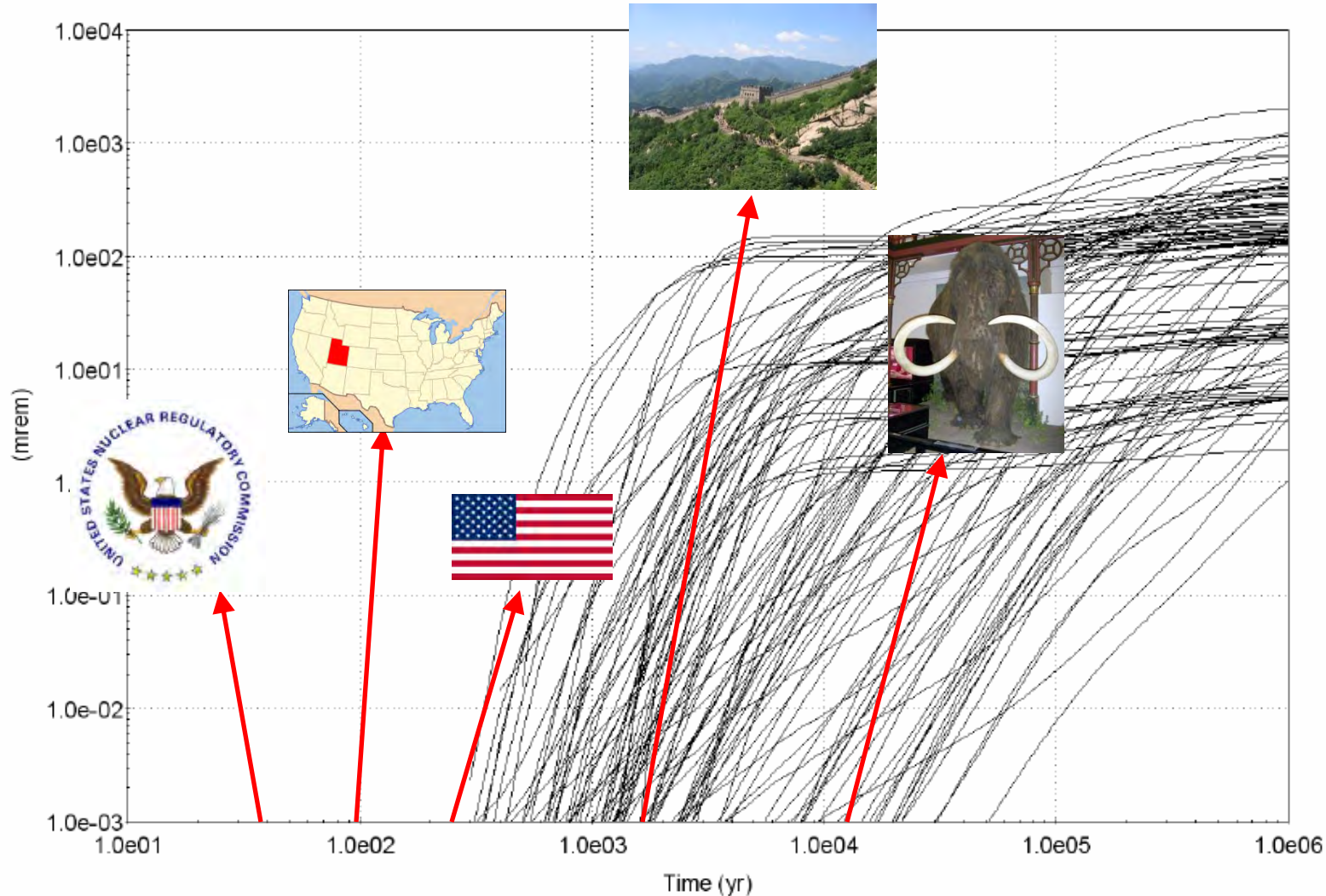
---

Prepared by:

D. Esh, C. Grossman, H. Arit, C. Barr, P. Yadav |

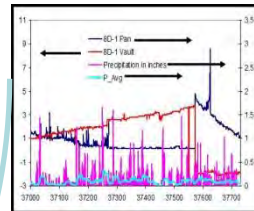
# Backup

# Timeframes - context

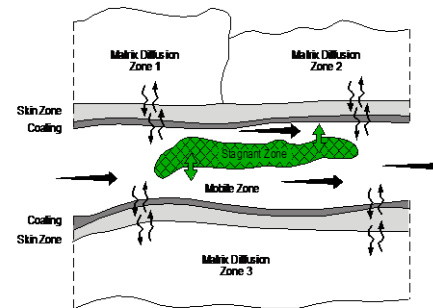




# Example - PA

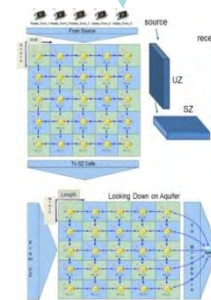


Site  
characterization  
data and other  
information



Hydrologic  
conceptual  
model

→ Longitudinal/Advection/Dispersive Transport  
↔ Advection Mixing  
↔ Diffusive Transport

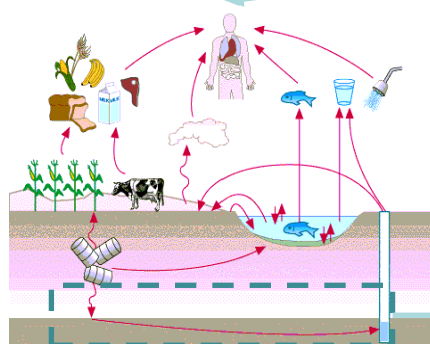


Boundary conditions  
Spatial and temporal  
discretization



Numerical  
model  
development

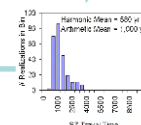
$$m'_{is} = -m_{is}\lambda_s + \sum_{p=1}^{NP} m_p \lambda_p f_{ps} R_{sp} (A_s/A_p) + \sum_{c=1}^{NC} f_{cs} + S_{is}$$



Performance  
assessment conceptual  
model development

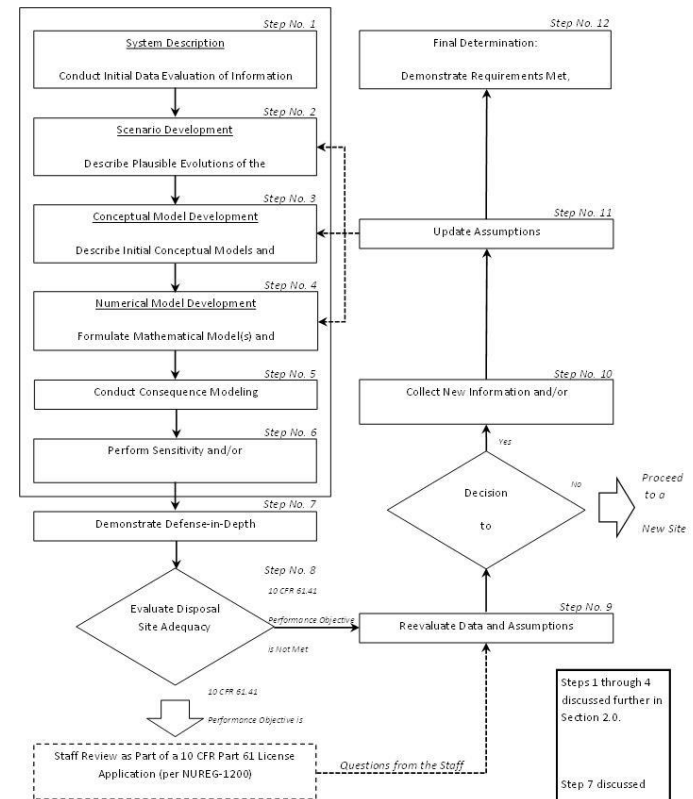
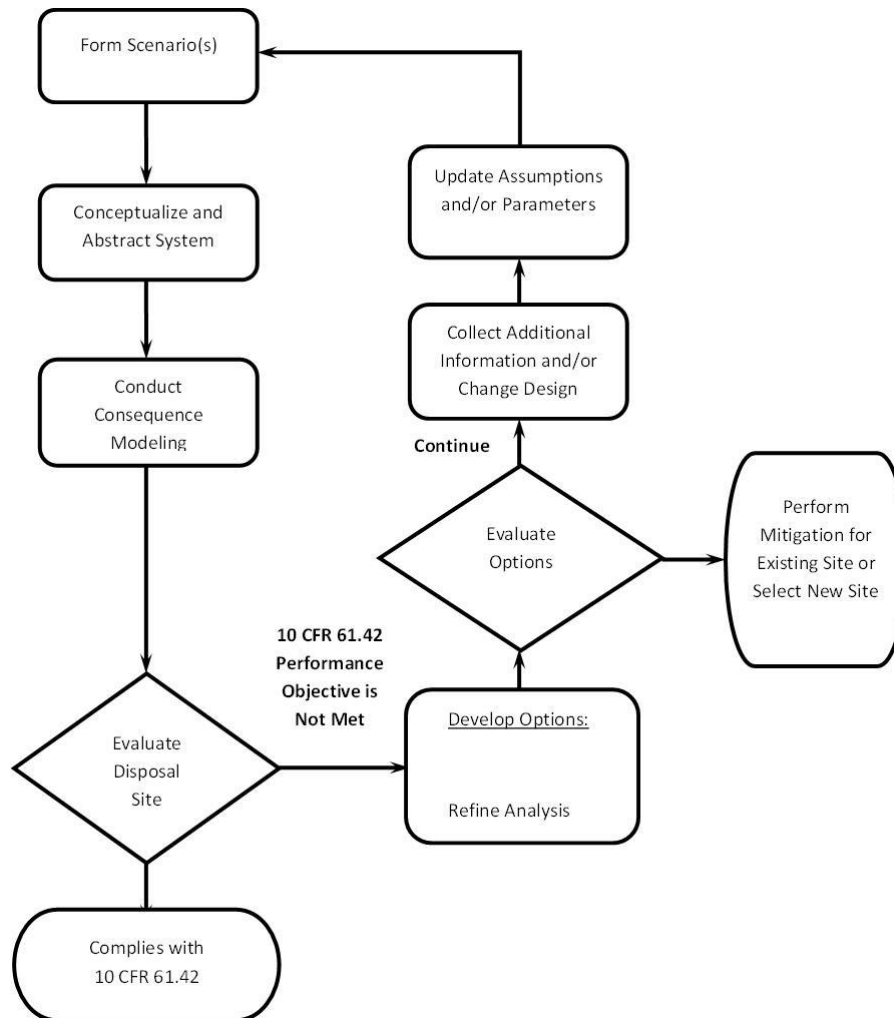
Hydrologic conceptual  
model development

Estimated system  
performance



Abstracted hydrologic model

# Flowcharts



# Site-Stability Example

