

## 25DW361 (2368-S006)

Site 25DW361 is a historic homestead located in Sections 26 and 35 T30N R51W on a hilltop southwest of a steep drainage cut (**Figures 47-49, 67**). An ephemeral drainage runs through the eastern one-third of the site boundary separating a single feature that was documented at the locale. The site measures 315 feet by 900 feet and covers an area of 273,250 square feet. Vegetation consists of some ponderosa pine around the periphery of the site, an isolated cottonwood tree, and mixed grasses affording a 65 to 80 percent bare ground visibility. The site datum is a GPS point taken at the southeast corner of Feature 1.

Cultural materials consists of four historic foundations (Features F1, F5, F9, F10), one windmill and stock tank (Feature F4), once corral (Feature F2), one small depression (Feature F3), one root cellar (Feature F6), one debris pile (Feature F7), on dirt mound (Feature F8), and an extensive historic debris scatter.

Feature F1 is a multi-room foundation composed of at least three rooms measuring 35 feet east to west and 55 feet north to south (**Figures 50 and 51**). The foundation walls remain approximately 10 inches high and consist of poured concrete intermixed with sandstone rocks and gravels with metal rebar exposed sporadically around the entirety of the foundation. The southern and northern rooms have concrete floors, while the center room has a dirt floor and contained several items such as metal door hinges, one wind rowler blade, one enamel bowl, and one metal track with pulleys. Milled lumber was scattered adjacent and east of Feature F1.

Feature F2 is a dilapidated wood corral located southeast of Feature F1 of which what remains measures 10 feet by 15 feet (**Figure 52**).

Feature F3 is a small depression located southwest of Feature F1 on the north side of a cottonwood tree and measures 5.5 feet in diameter (**Figure 53**). Depression Feature F3 contains several pieces of milled lumber.

Feature F4 is a windmill and stock pond located southwest of depression Feature F3 and measures approximately 35 feet by 25 feet. Feature F4 consists of a knocked over windmill (**Figures 54, 56, and 57**), a small square concrete pit with a metal wind mill pipe support embedded in its south wall (**Figures 55 and 57**), and a small concrete trough with an attached pipe on its south wall that once had water flowing into the depression assumed to be a stock pond now filled with water pipes, wood and metal debris, and household items (**Figures 54 and 57**).

Feature F5 is a multi-room foundation composed of at least two rooms located south of Feature F4 and measures 25 feet east to west and 40 feet north to south (**Figures 58, 59, and 60**). The foundation walls remain approximately 12 inches high and consist of poured concrete intermixed with sandstone rocks and gravels. Much of foundation wall remains intact with just the western wall of the southern room and northern wall of northern room partially collapsed. The rooms have dirt floors, and contained items such as one metal sink basin, bricks, scrap metal, two wood bed spindles and a metal bed head or foot board.

Feature F6 is a small depression assumed to be a root cellar located west of Feature F5 and measures 13 feet by 9 feet (**Figure 61**). Feature F6 is filled with milled lumber that appears to be a section of a roof, fence posts, a wood bed spindle, and fencing wire.



Feature F7 is a debris pile located northwest of Feature F6 and measures 10 feet by 15 feet (**Figure 62**). Feature F7 contains hog wire, scrap metal, wood fence debris, corrugated sheet metal, and wind rowler blades.

Feature F8 is a small round dirt mound of unknown use located south of Feature F7 and measures 10 feet by 10 feet (**Figure 63**).

Feature F9 is small foundation located south of Feature F3 and measures 15 feet by 11 feet (**Figure 64**). The foundation walls remain approximately six inches high and consist of poured concrete intermixed with sandstone rocks and gravels. The southern and northern portions of the foundation remain partially intact with the eastern and western portions collapsed. The floor is dirt and contained items such as metal mechanical parts and a metal bed frame. Bricks were scattered adjacent and west of Feature F9.

Feature F10 consists of a multi-room foundation and a well collar located west of Feature F7 and measures 30 feet by 30 feet (**Figures 65 and 66**). The foundation walls remain approximately 10 inches high and are constructed of sandstone and mortar. The sandstone rocks are rough, uncut, stones averaging 18 inches in size. The floor of Feature F10 is dirt and contained no cultural materials. The well collar is located adjacent to the foundation and is constructed of poured concrete that has degraded into multiple pieces.

Historic homestead site 25DW361 was probably occupied from the early to mid-1900s. This historic homestead consists of features and debris commonly recorded in the area, but the National Register criteria does not dismiss resources as insignificant simply because there are numerous examples of the type. National Register eligibility for any property, including historic period archeological sites, depends on integrity and significance. Integrity for a historic period archaeological site is based on the presence of features and whether or not they can tell us something about the location. Site 25DW361 is probably an early historic homestead that does not retain enough integrity to qualify for the National Register. Lack of integrity alone, however, does not automatically exclude this site as eligible for the National Register. Significance was assessed following intensive survey and a historic records search that included a files search and architectural/structures property search conducted through the Nebraska SHPO; review of the National Register of Historic Places (NRHP) database for Dawes County, Nebraska; review of the National Historic Landmark inventory (NHL); review of General Land Office (GLO) Plats; and local literature review; that revealed sustained Euro-American historic occupation in this area occurred between 1890 to present day, and no leases or purchasers were found that can be associated with an important person or persons of "significance in history" or having an uncommon ethnic affiliation. Finally, due primarily to their poor condition, the features associated with site 25DW361 lack a unique design and any other unusual physical characteristic. Therefore, site 25DW361 does not possess enough significance to qualify for the National Register. Site 25DW361 is a common historic site likely associated with historic and early modern ranching or farming activities in the region that ARCADIS recommends **not eligible for listing on the NRHP and no further work is necessary**.



Figure 47. 25DW361 site overview at Feature F5, facing Features F7 and F8 to the northwest. Photograph taken by Shane Rosenthal, on 11/20/2010.



Figure 48. 25DW361 site overview at Feature F5, facing Features F4 to the north. Photograph taken by Shane Rosenthal, on 11/20/2010.



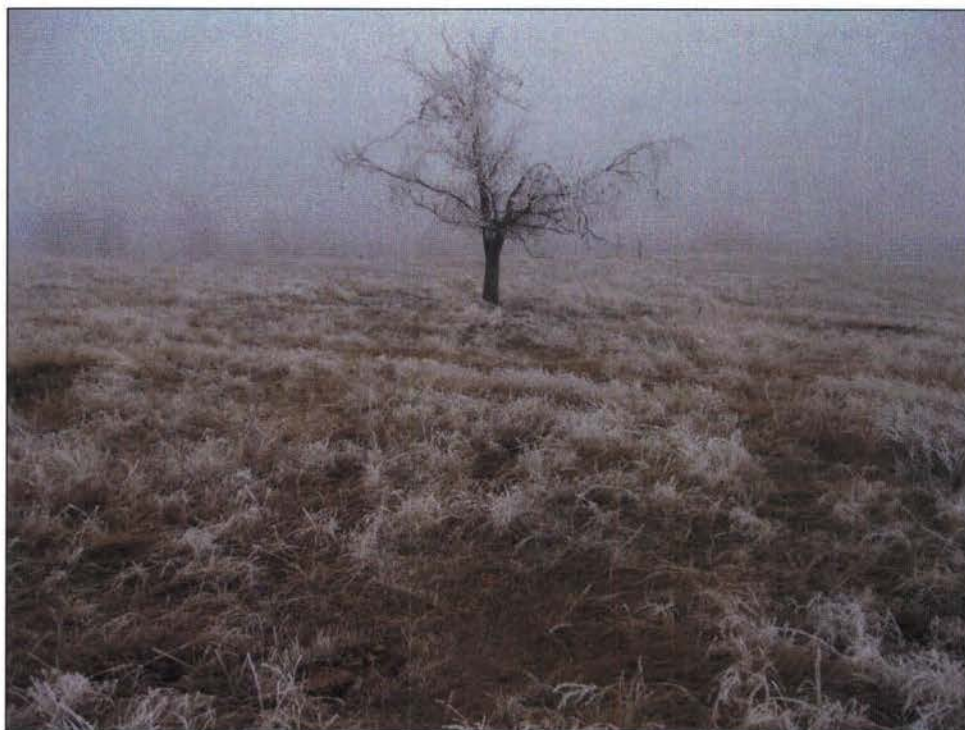


Figure 49. 25DW361 site overview at Feature F5, facing Features F1, F2, and F3 to the northeast. Photograph taken by Shane Rosenthal, on 11/20/2010.



Figure 50. 25DW361 Feature F1, east wall of multi-room foundation, facing south. Photograph taken by Adam Graves, on 11/20/2010.

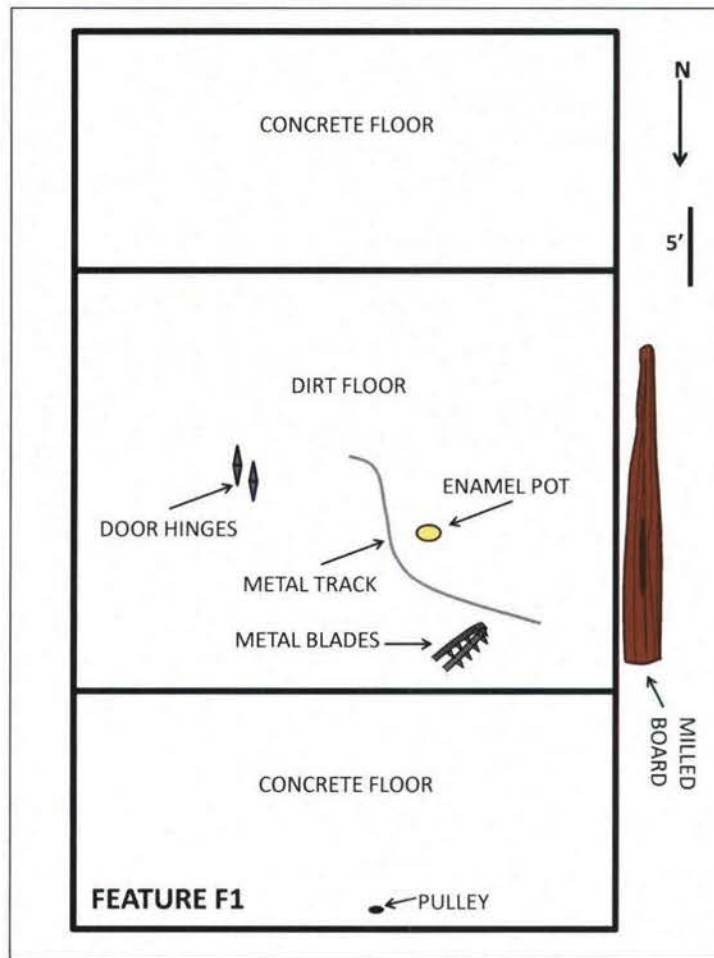


Figure 51. 25DW361 Feature F1 plan view drawing. Drawing by Ashley Howder, on 1/19/2011.





Figure 52. 25DW361 Feature F2, corral, facing east. Photograph taken by Adam Graves, on 11/20/2010.



Figure 53. 25DW361 Feature F3, depression, facing north. Photograph taken by Adam Graves, on 11/20/2010.





Figure 54. 25DW361 Feature F4, stock pond and windmill, facing north. Photograph taken by Shane Rosenthal, on 11/20/2010.



Figure 55. 25DW361 Feature F4, well, facing north. Photograph taken by Shane Rosenthal, on 11/20/2010.



Figure 56. 25DW361 Feature F4, windmill, facing west. Photograph taken by Shane Rosenthal, on 11/20/2010.



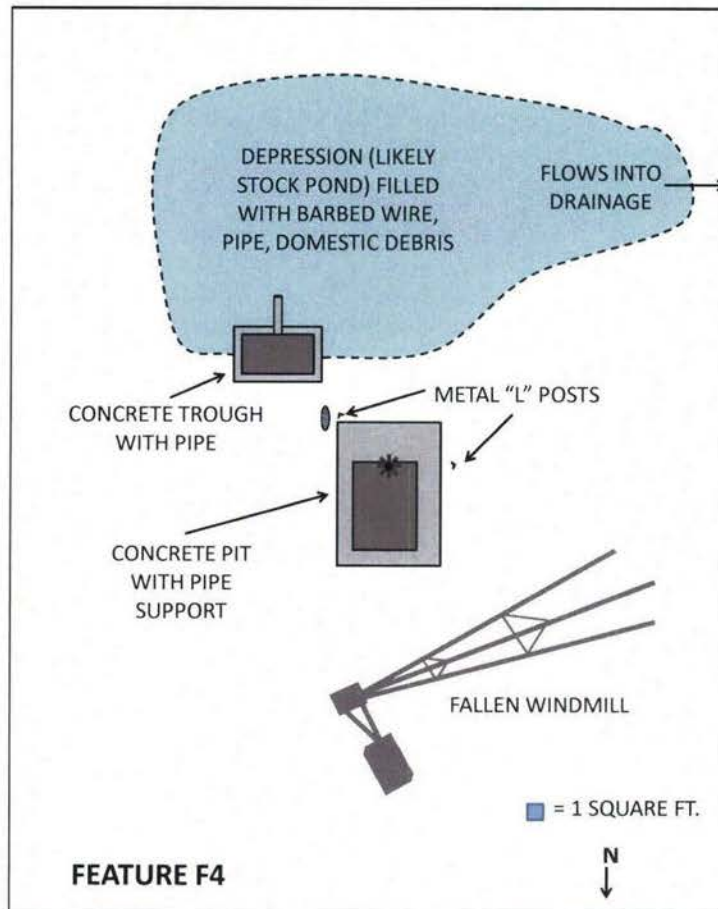


Figure 57. 25DW361 Feature F4 plan view drawing. Drawing by Ashley Howder, on 1/19/2011.



Figure 58. 25DW361 Feature F5, multi-room foundation, facing south. Photograph taken by Shane Rosenthal, on 11/20/2010.



Figure 59. 25DW361 Feature F5, western interior of multi-room foundation, facing south. Photograph taken by Shane Rosenthal, on 11/20/2010.



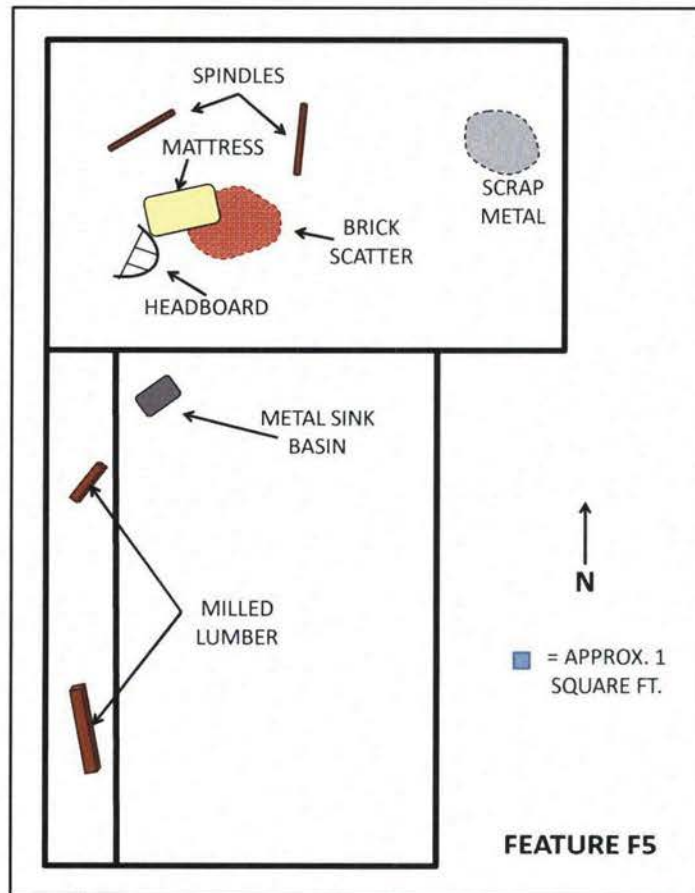


Figure 60. 25DW361 Feature F5, plan view, facing south. Photograph taken by Shane Rosenthal, on 11/20/2010.



Figure 61. 25DW361 Feature F6, root cellar, facing north. Photograph taken by Shane Rosenthal, on 11/20/2010.



Figure 62. 25DW361 Feature F7, debris pile, facing west. Photograph taken by Shane Rosenthal, on 11/20/2010.