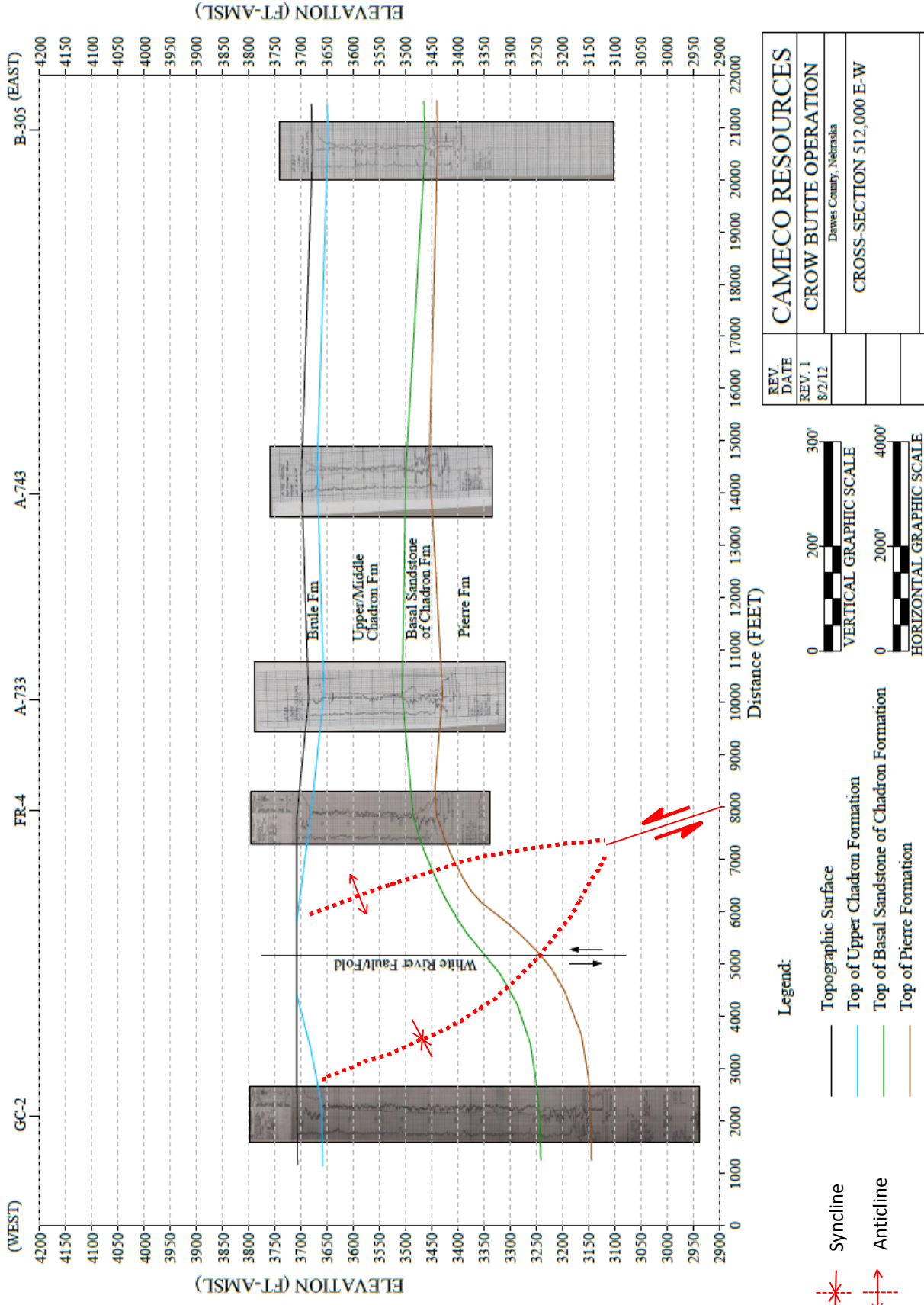


FIGURE 2.6-4 Cross Section 512,000 E-W



REV.	DATE	CAMECO RESOURCES
REV. 1	8/2/12	CROW BUTTE OPERATION
		Dawes County, Nebraska
		CROSS-SECTION 512,000 E-W
		FIGURE 2.6-4
		Prepared by: CBO
		Drawn by: Wade Beins