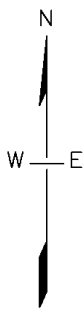
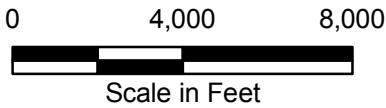


**LEGEND**

- Cross Section
- Class III Permit Boundary
- Proposed North Trend Expansion Area
- 2.25-Mile CSA Area of Review



CROW BUTTE  
RESOURCES, INC.

FIGURE 2.6-3  
CROSS SECTION LOCATION

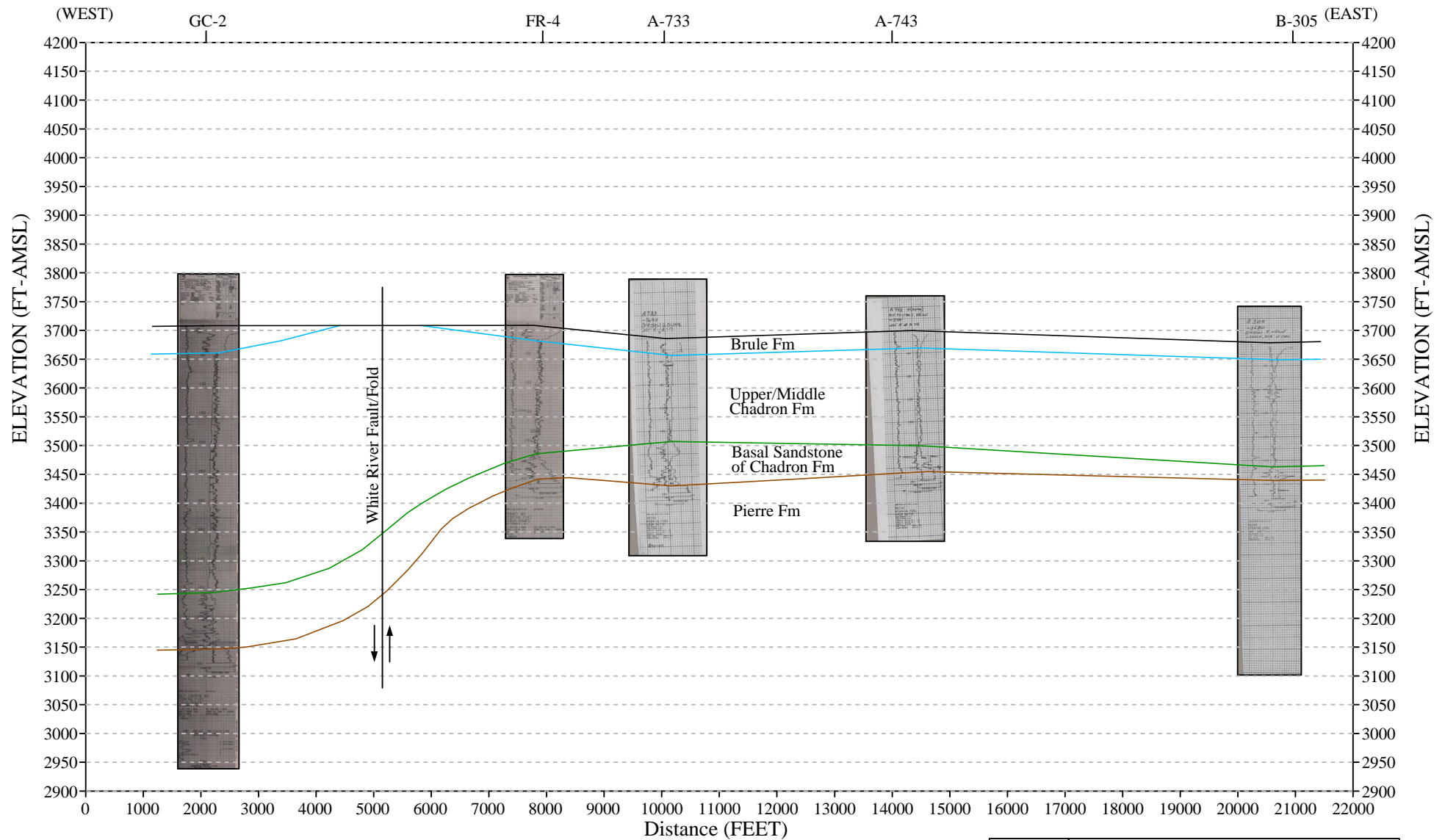
PROJECT: CO001322    MAPPED: JC    CHECKED: MS  
FILE: Figure 2.6-3\_XSLocation.mxd @ 04/09/2009

**ARCADIS**  
Infrastructure, environment, facilities

630 Plaza Drive, Ste. 100  
Highlands Ranch, CO 80129  
P: 720-344-3500 F: 720-344-3535  
www.arcadis-us.com

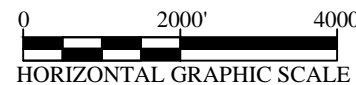
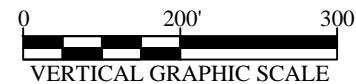
# FIGURE 2.6-4 Cross Section 512,000 E-W

CBR-024



Legend:

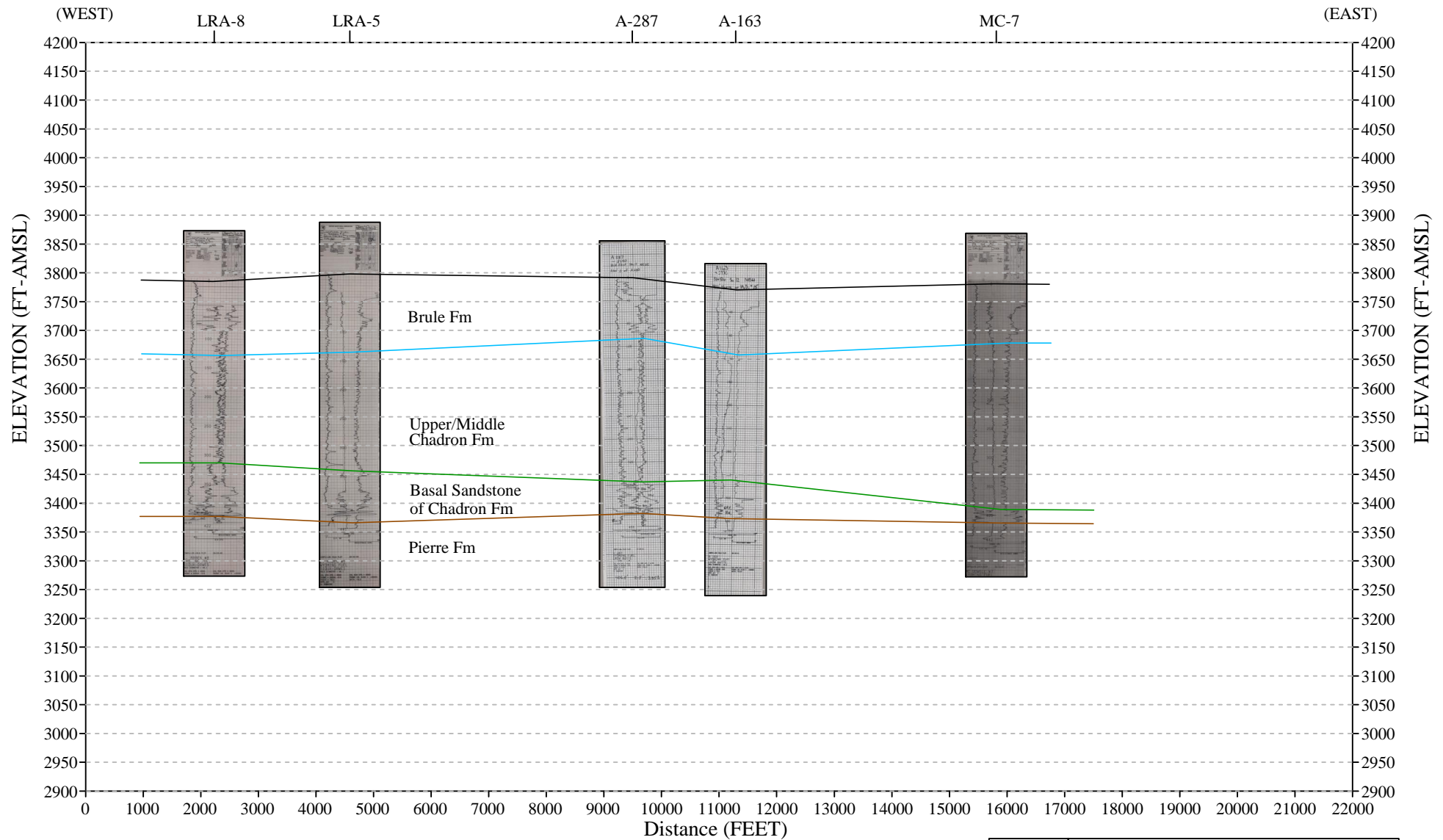
- Topographic Surface
- Top of Upper Chadron Formation
- Top of Basal Sandstone of Chadron Formation
- Top of Pierre Formation



REV. DATE	<b>CAMECO RESOURCES</b>
REV. 1 8/2/12	<b>CROW BUTTE OPERATION</b>
	Dawes County, Nebraska
	<b>CROSS-SECTION 512,000 E-W</b>
	<b>FIGURE 2.6-4</b>
	Prepared by: CBO Drawn by: Wade Beins

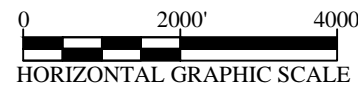
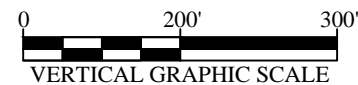
# FIGURE 2.6-5 Cross Section 506,000 E-W

CBR-024



Legend:

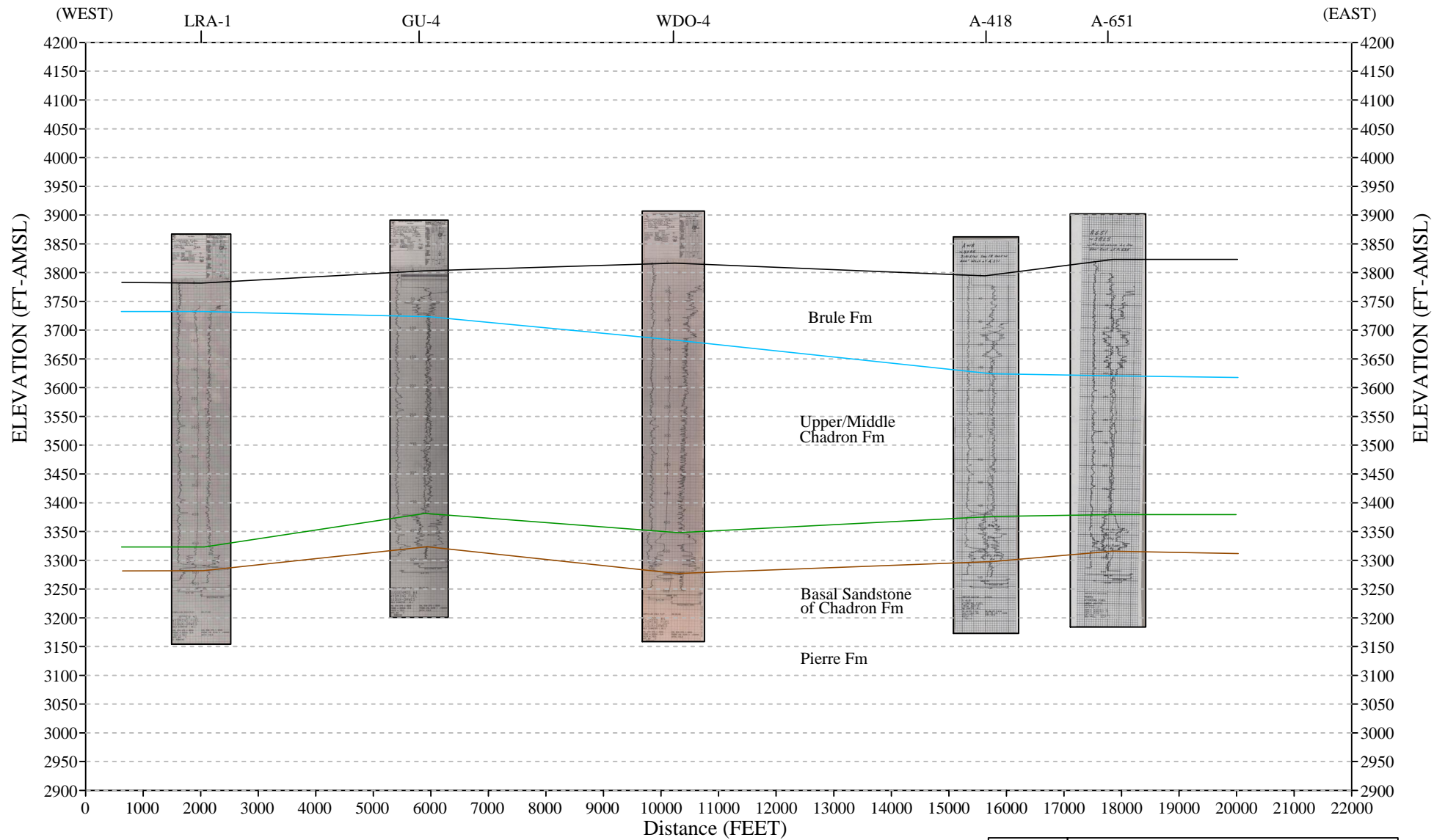
- Topographic Surface
- Top of Upper Chadron Formation
- Top of Basal Sandstone of Chadron Formation
- Top of Pierre Formation



REV. DATE	<b>CAMECO RESOURCES</b>
REV. 1 8/2/12	<b>CROW BUTTE OPERATION</b>
	Dawes County, Nebraska
	<b>CROSS-SECTION 506,000 E-W</b>
	<b>FIGURE 2.6-5</b>
	Prepared by: CBO Drawn by: Wade Beins

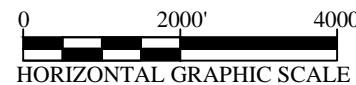
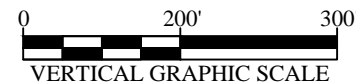
# FIGURE 2.6-6 Cross Section 500,000 E-W

CBR-024



## Legend:

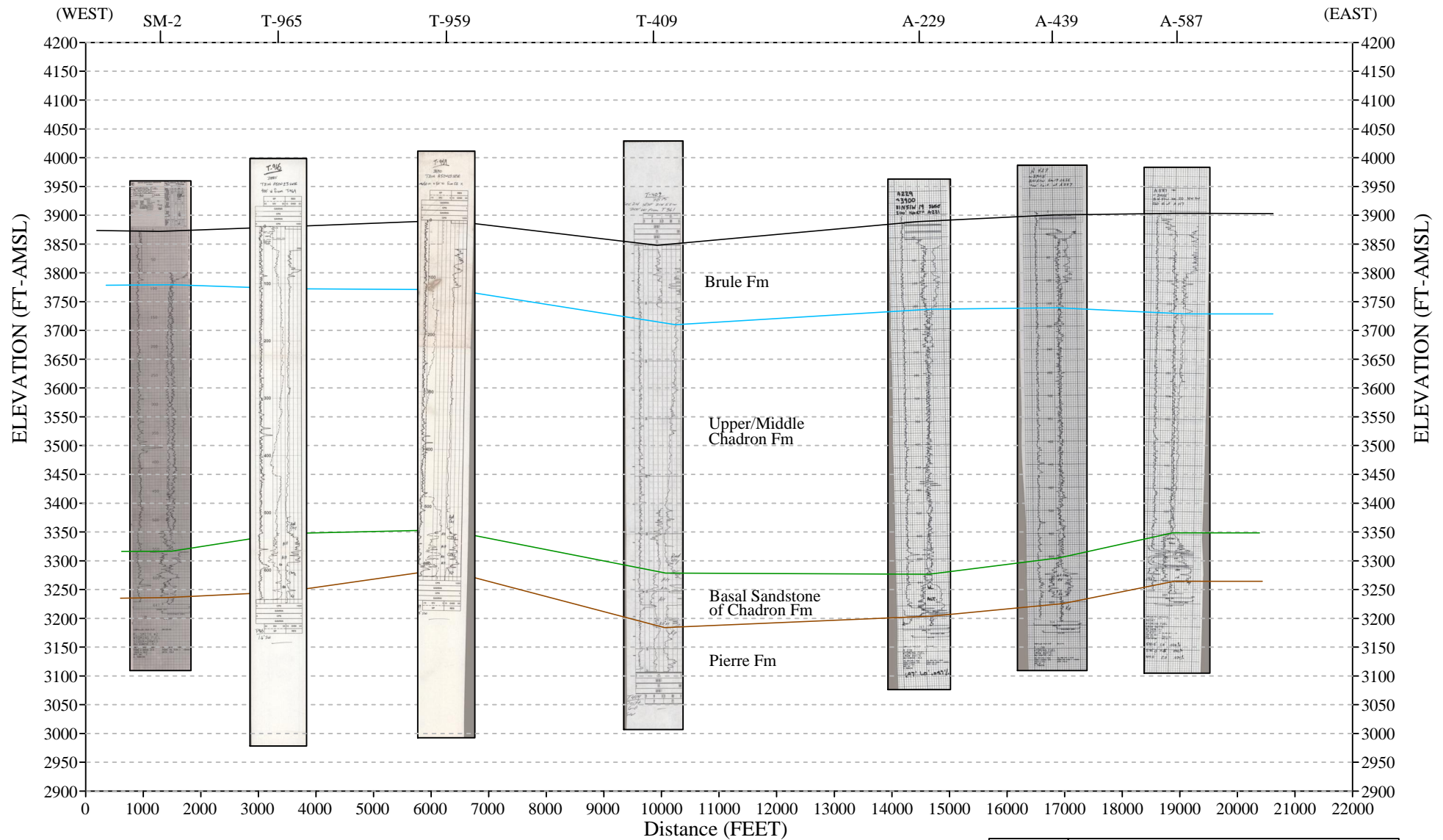
- Topographic Surface
- Top of Upper Chadron Formation
- Top of Basal Sandstone of Chadron Formation
- Top of Pierre Formation



REV. DATE	<b>CAMECO RESOURCES</b>
REV. 1 8/2/12	<b>CROW BUTTE OPERATION</b>
	Dawes County, Nebraska
	<b>CROSS-SECTION 500,000 E-W</b>
	<b>FIGURE 2.6-6</b>
	Prepared by: CBO Drawn by: Wade Beins

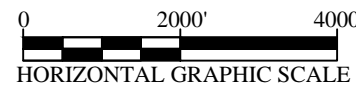
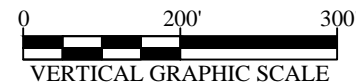
# FIGURE 2.6-7 Cross Section 494,000 E-W

CBR-024



## Legend:

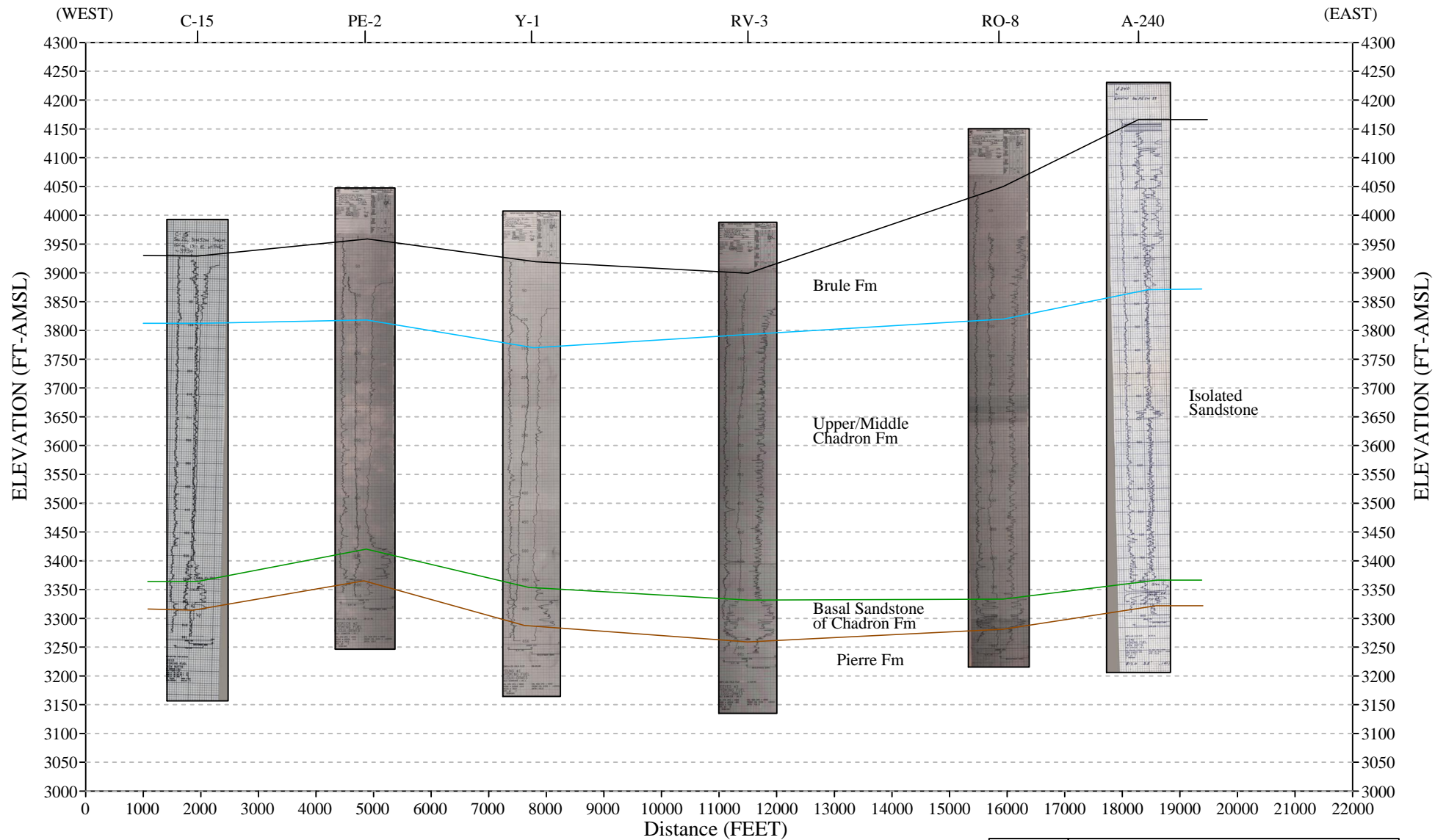
- Topographic Surface
- Top of Upper Chadron Formation
- Top of Basal Sandstone of Chadron Formation
- Top of Pierre Formation



REV. DATE	<b>CAMECO RESOURCES</b>
REV. 1 8/2/12	<b>CROW BUTTE OPERATION</b>
	Dawes County, Nebraska
	<b>CROSS-SECTION 494,000 E-W</b>
	<b>FIGURE 2.6-7</b>
	Prepared by: CBO Drawn by: Wade Beins

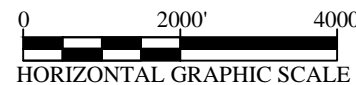
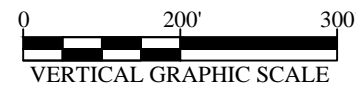
# FIGURE 2.6-8 Cross Section 490,000 E-W

CBR-024



Legend:

- Topographic Surface
- Top of Upper Chadron Formation
- Top of Basal Sandstone of Chadron Formation
- Top of Pierre Formation

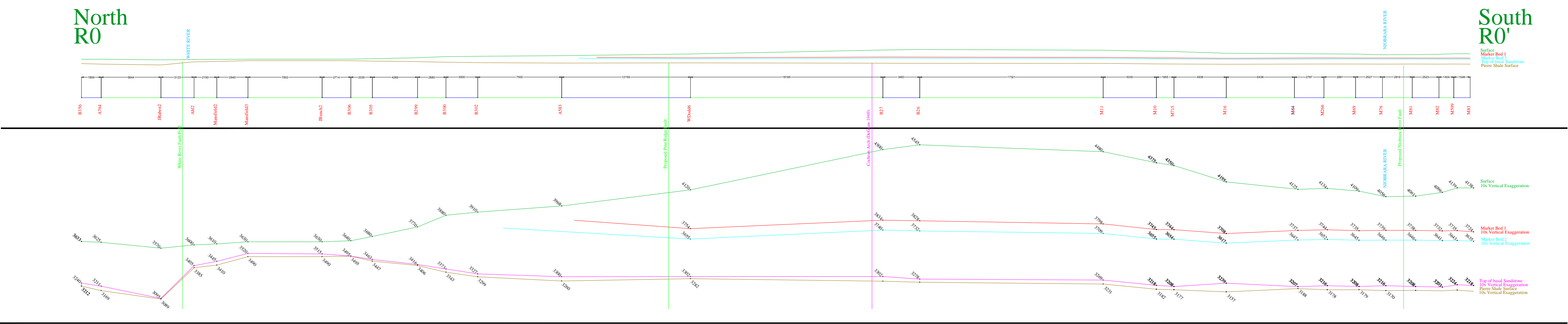


REV. DATE	<b>CAMECO RESOURCES</b>
REV. 1 8/2/12	<b>CROW BUTTE OPERATION</b>
	Dawes County, Nebraska
	<b>CROSS-SECTION 490,000 E-W</b>
	<b>FIGURE 2.6-8</b>
	Prepared by: CBO Drawn by: Wade Beins

# CRAWFORD BASIN GEOLOGIC STRUCTURE

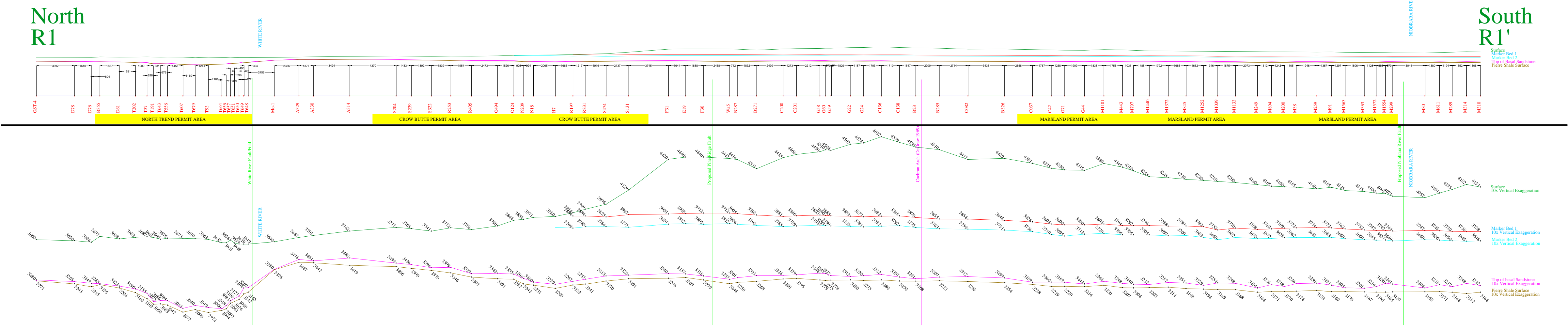
Regional incline S-N = 1.24 degrees

## CROSS-SECTION R0 - R0'



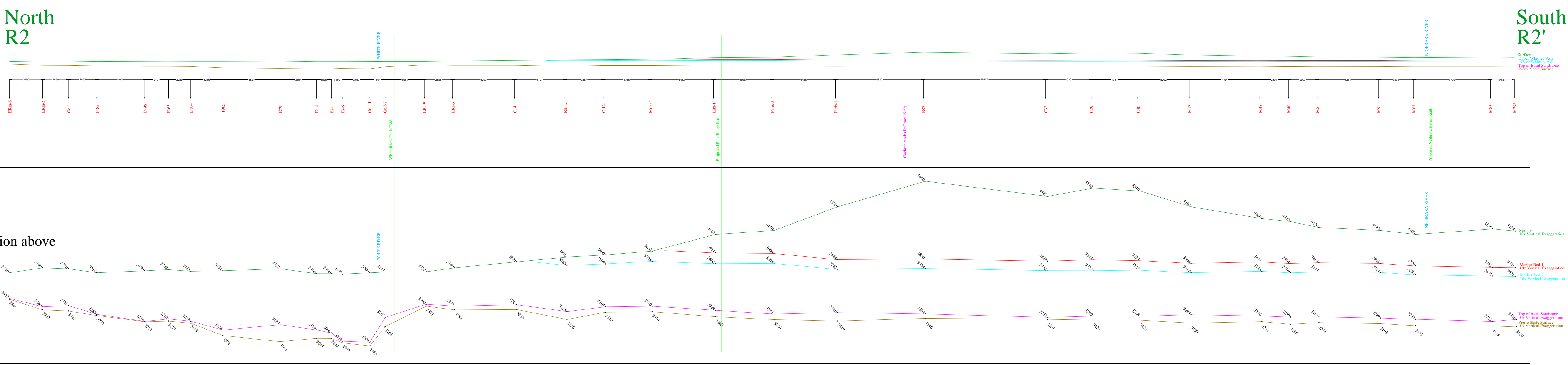
Picks show surface elevation above Mean Sea Level

## CROSS-SECTION R1 - R1'



Picks show surface elevation above Mean Sea Level

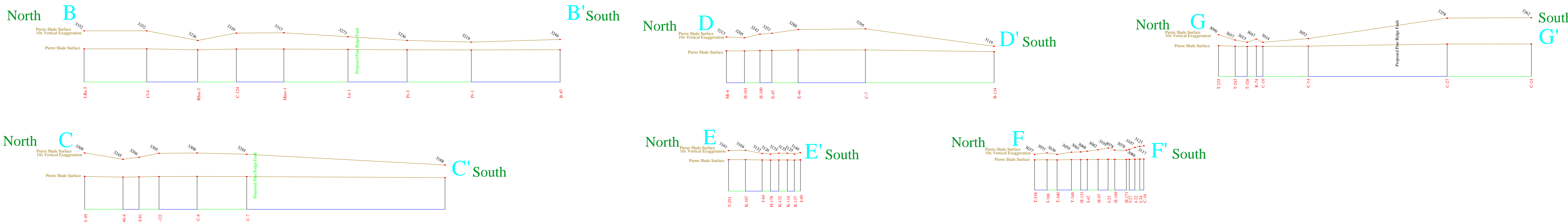
## CROSS-SECTION R2 - R2'



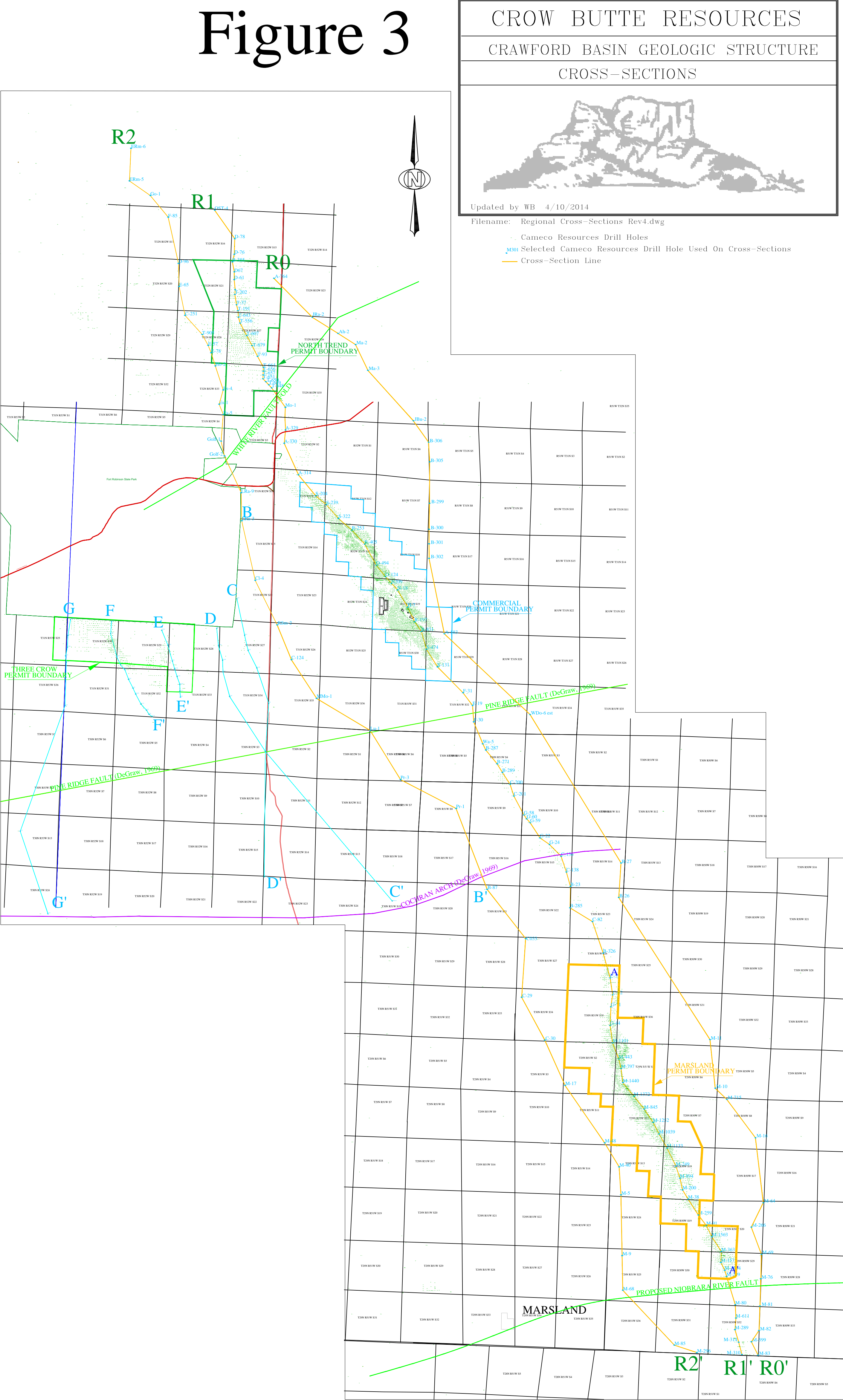
Picks show surface elevation above Mean Sea Level

## THREE CROW AREA CROSS-SECTIONS

(As shown in TCEA License Application)  
Picks show surface elevation above Mean Sea Level



### Figure 3



### Figure 3