

***Prairie Island Nuclear Plant Units 1 and 2
2014 Problem Identification and Resolution
Inspection***

Reactor Oversight Process – 2014

Nuclear Regulatory Commission - Region III

May 13, 2015



Purpose of Today's Meeting

- **Discuss the results of the 2014 Problem Identification and Resolution (PI&R) inspection**
- **Discuss the licensee's plans to improve performance**
- **Answer public questions associated with the 2014 PI&R inspection results and the licensee's plans to improve performance**



Agenda

- **Introduction**
- **2014 PI&R Inspection Results**
- **Licensee Performance Improvement Plans**
- **Closing Remarks**
- **Break**
- **Public Q&A Session**
- **Open House addressing 2014 Assessment**



Who is the NRC?

- **Civilian agency responsible for regulating the civilian nuclear program, including nuclear reactors, nuclear materials, nuclear waste and nuclear security.**
- **The NRC does not regulate nuclear weapons, military reactors, or space vehicle reactors; nor do we own or operate any nuclear power plants.**
- **The NRC is headquartered in Rockville, MD, with four regional offices. The NRC also has a staff of full time resident inspectors located at each operating nuclear reactor.**



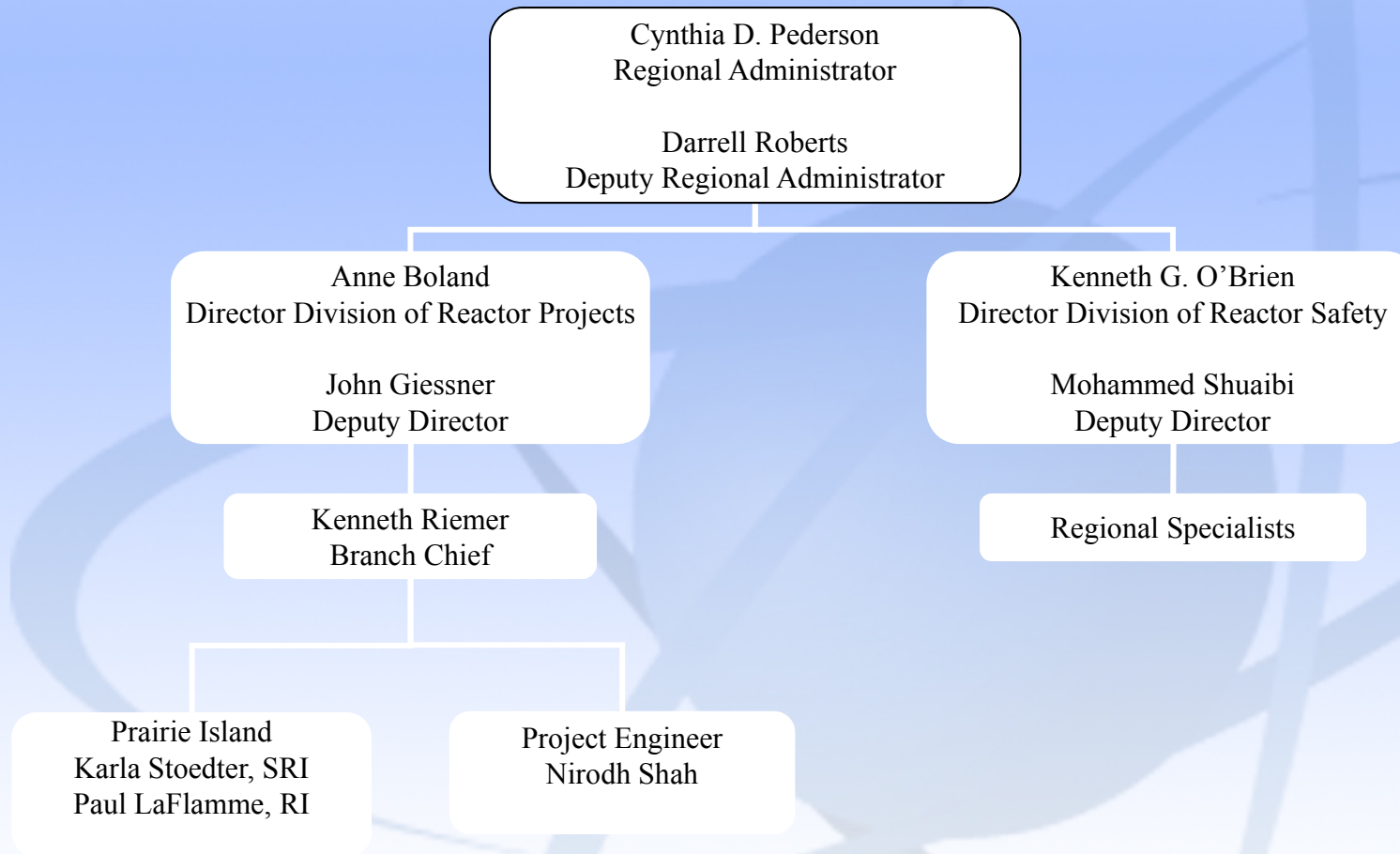
NRC Mission

To license and regulate the nation's civilian use of byproduct, source, and special nuclear materials to ensure adequate protection of public health and safety, promote the common defense and security, and protect the environment.



Region III Organization

Lisle, IL





Corrective Action Program

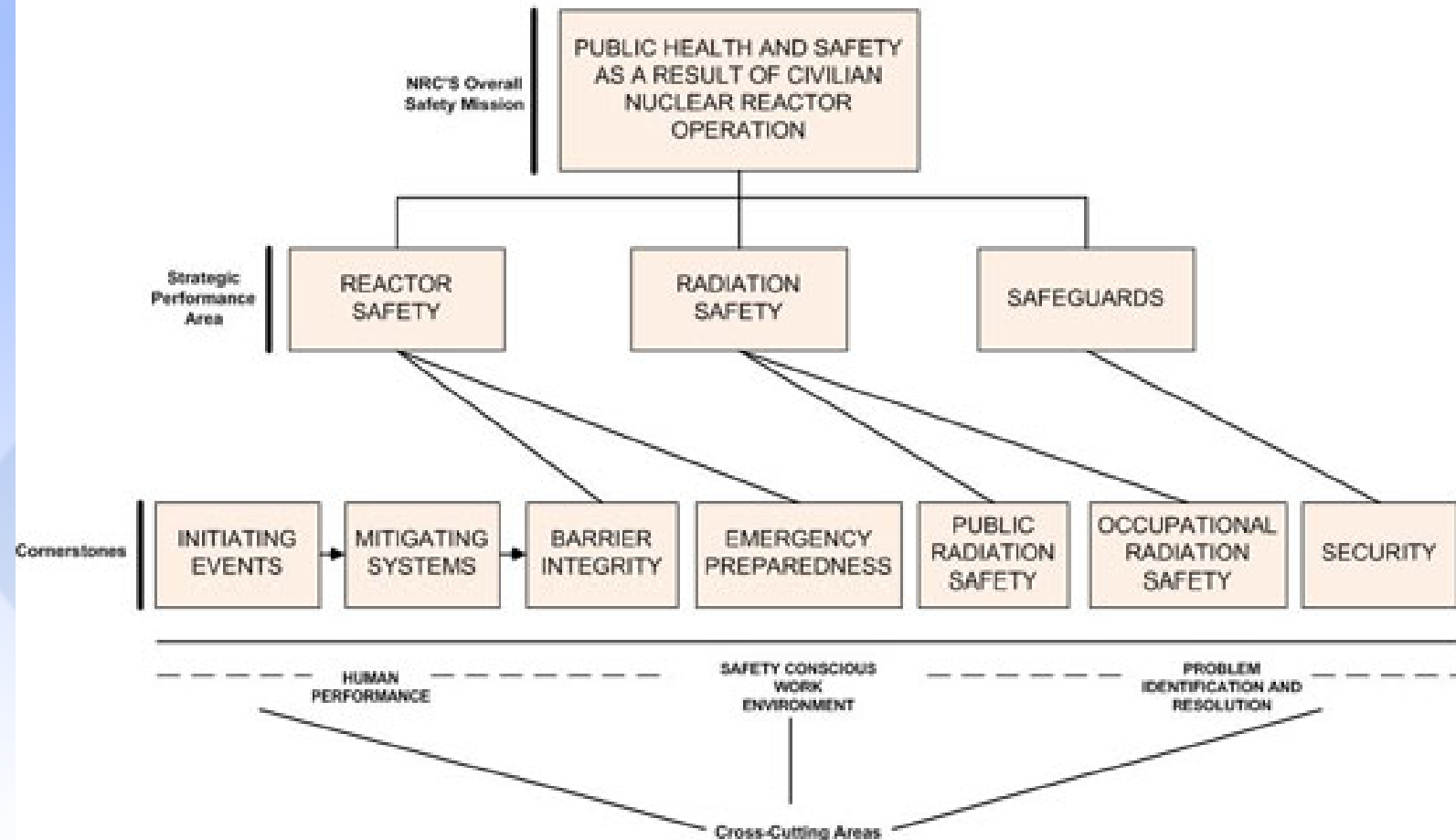
The NRC oversight process requires that each licensee have a robust and mature Corrective Action Program to:

**Identify
Evaluate
Correct**



Reactor Oversight Process

REGULATORY FRAMEWORK





2014 Problem Identification and Resolution Inspection Results

- Identified several concerns with the licensee's corrective action program.
- Similar to issues previously identified by NRC inspections in 2008, 2010 and 2012.
- The majority of issues involved a failure to properly resolve outstanding equipment issues and to correct negative trends in human performance.
- Most issues were in the CAP, but were not properly evaluated or corrected until they developed into more significant issues.
- In many cases, these issues were raised after they were identified by the NRC.



CAP Impact on Plant Performance

The failure to address the CAP is one of the primary reasons for the recurring ROP assessment and operating histories.

Prairie Island has an open substantive cross-cutting issue associated with Human Performance.

Prairie Island and Monticello are 2 of only 3 plants in the nation with open substantive cross-cutting issues.



Licensee Response and Remarks

**Kevin Davison
Site Vice President
Prairie Island Nuclear Generating Plant**



Closing Remarks

**Cynthia Pederson
Regional Administrator
NRC Region III**



Questions/Comments

