

PROPRIETARY INFORMATION

Figure 1.2-30 – Turbine Building, General Arrangement at Elevation 38300 mm

PROPRIETARY INFORMATION

Figure 1.2-31 – Turbine Building, General Arrangement at Elevation 47200 mm

PROPRIETARY INFORMATION

Figure 1.2-32 – Turbine Building, General Arrangement at Section A-A

PROPRIETARY INFORMATION

Figure 1.2-33 – Turbine Building, General Arrangement at Section B-B

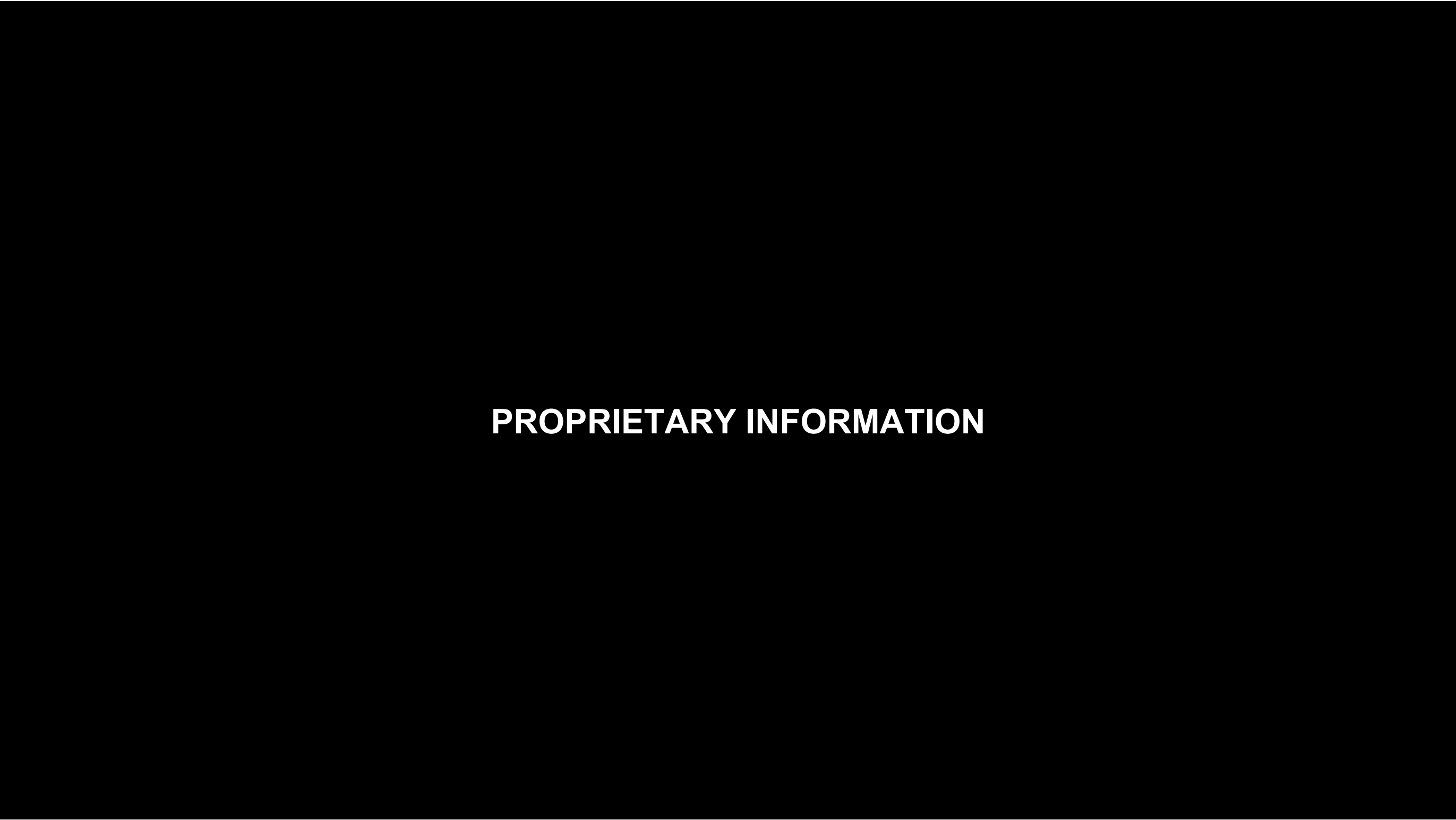


Figure 1.2-34 – UHS Tower Plans

PROPRIETARY INFORMATION

Figure 1.2-35 – UHS Tower Sections

PROPRIETARY INFORMATION

Figure 1.2-36 – RSW Pumphouse and Tunnel Plans and Sections

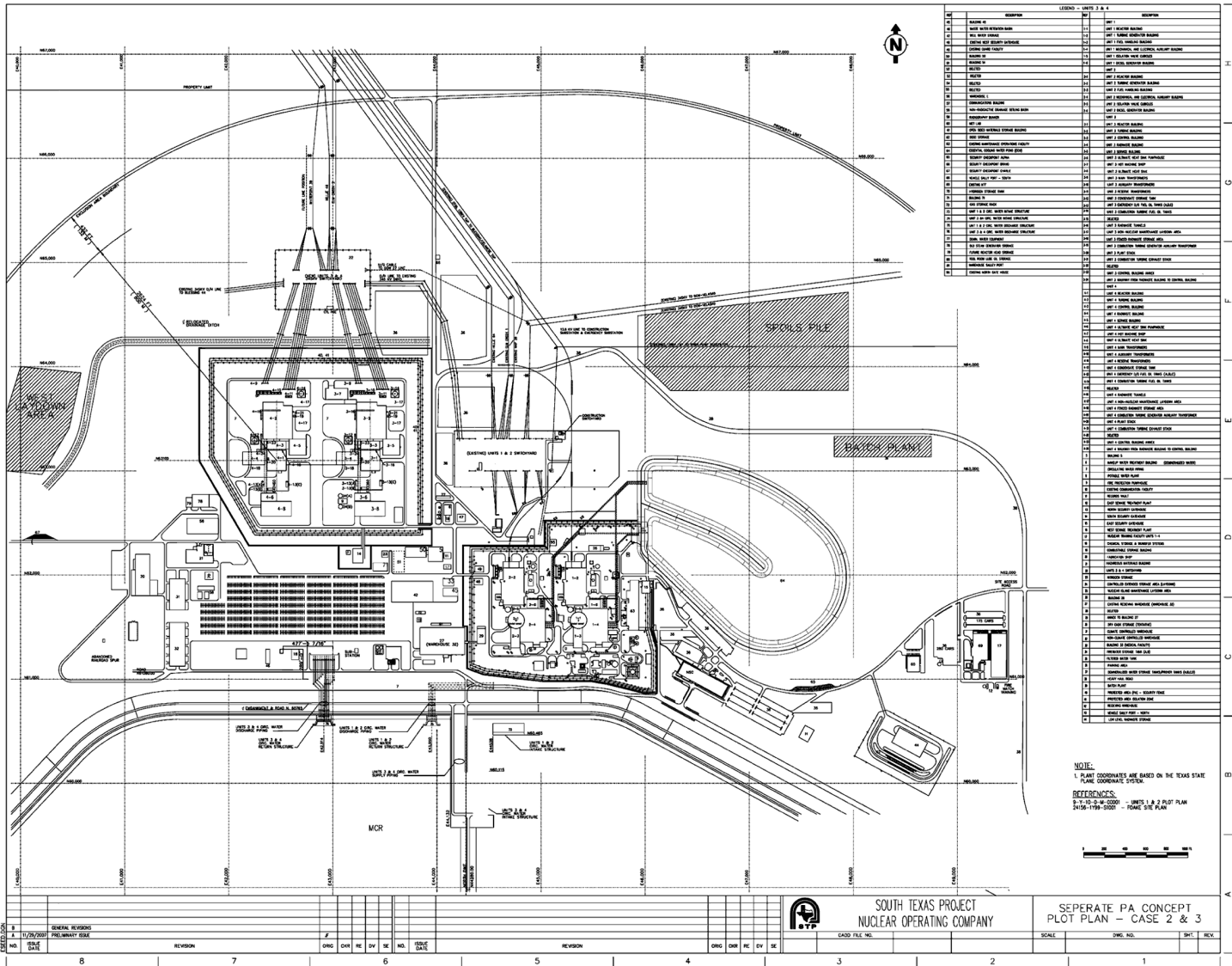


Figure 1.2-37 – Plot Plan

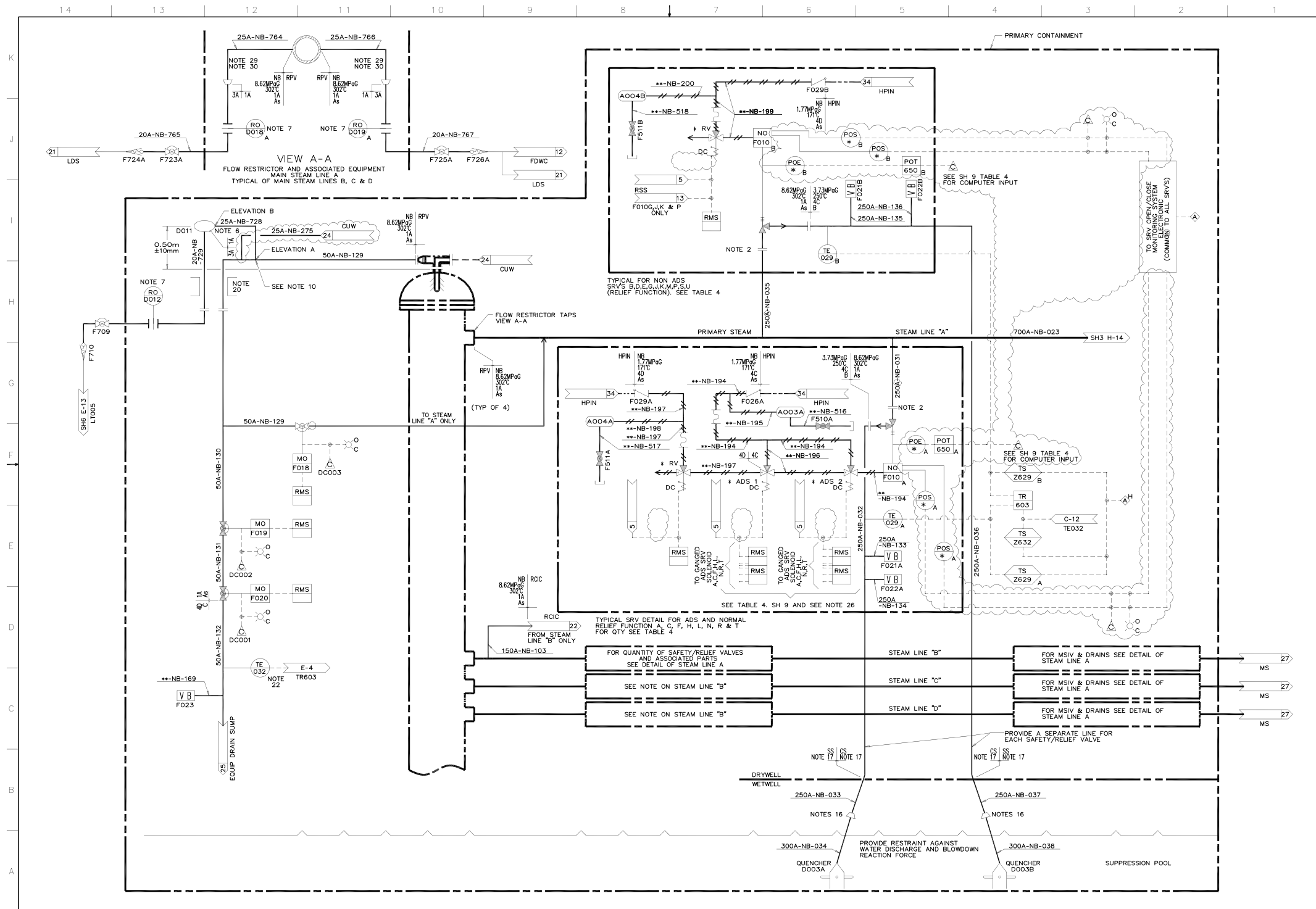


Figure 5.1-3 – Nuclear Boiler System P&ID (Sheet 2 of 11)

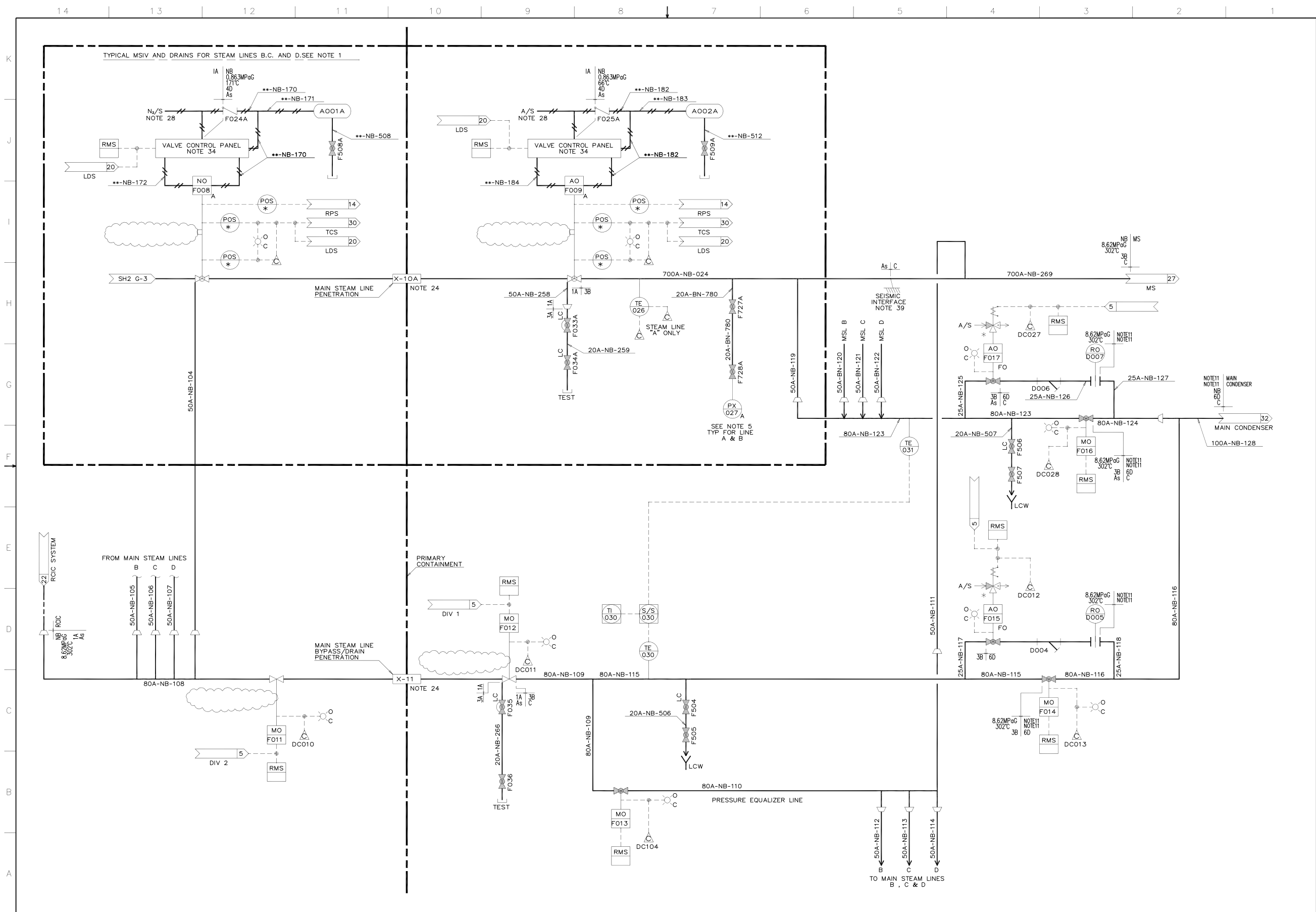


Figure 5.1-3 – Nuclear Boiler System P&ID (Sheet 3 of 11)

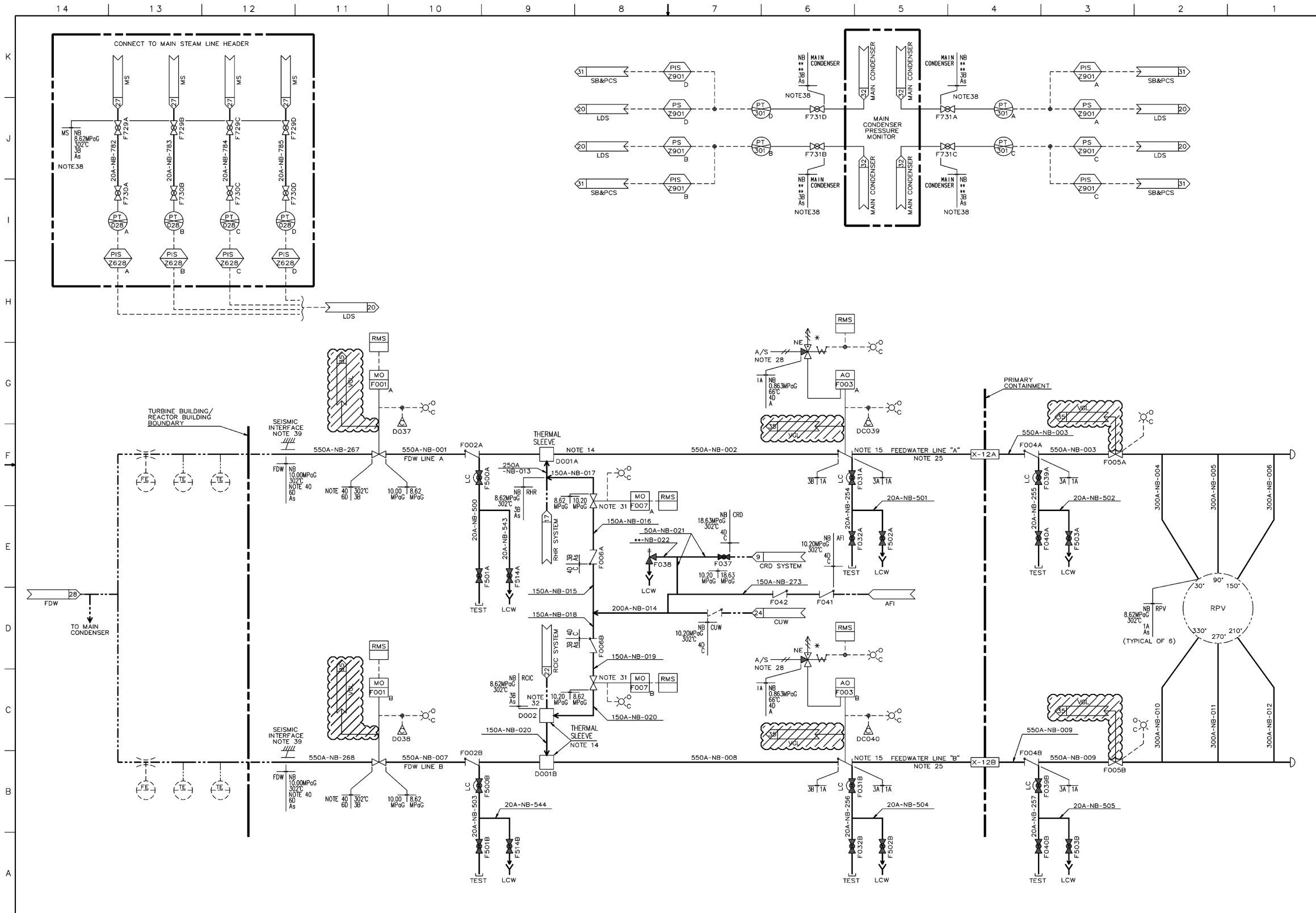


Figure 5.1-3 – Nuclear Boiler System P&ID (Sheet 4 of 11)

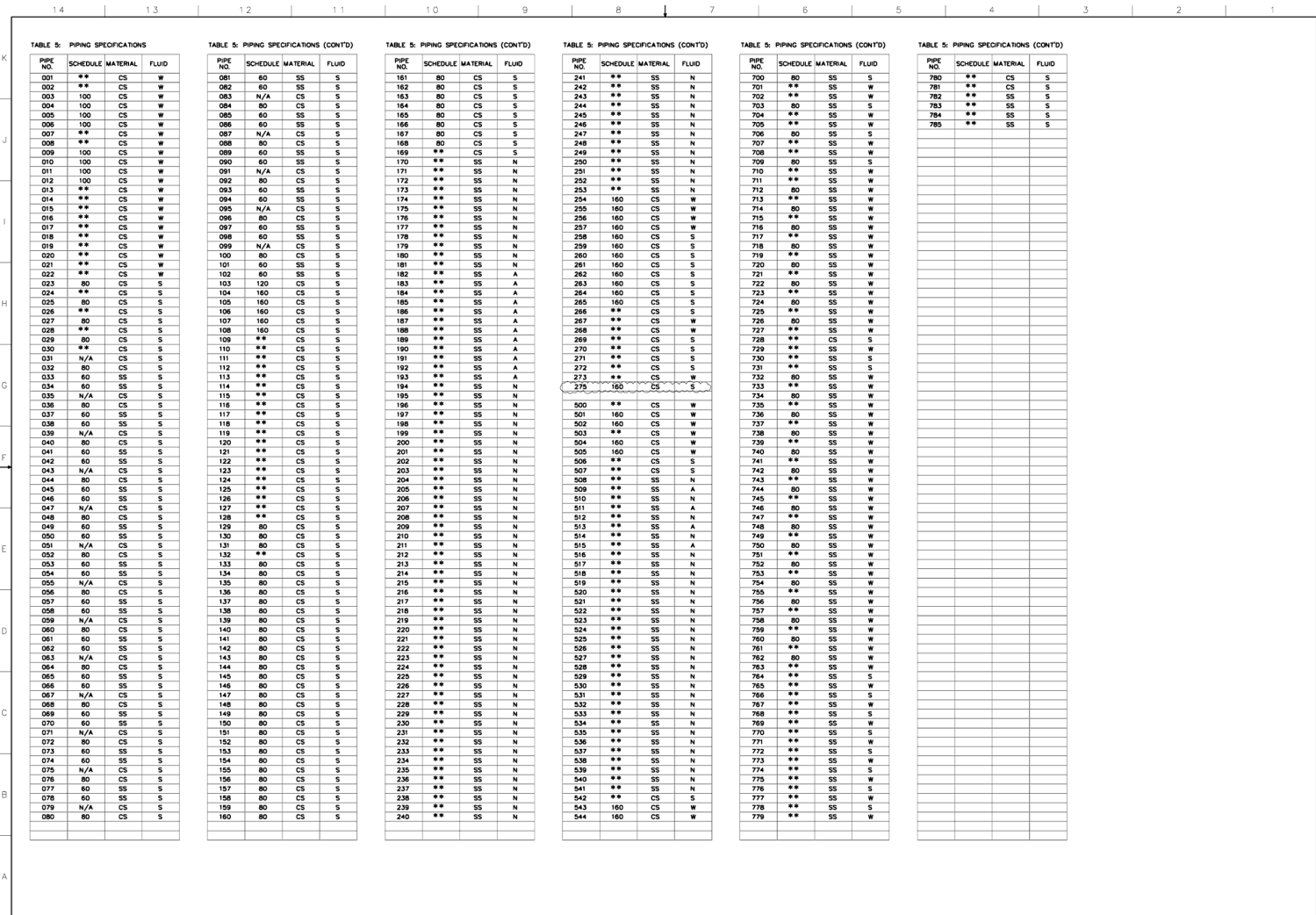
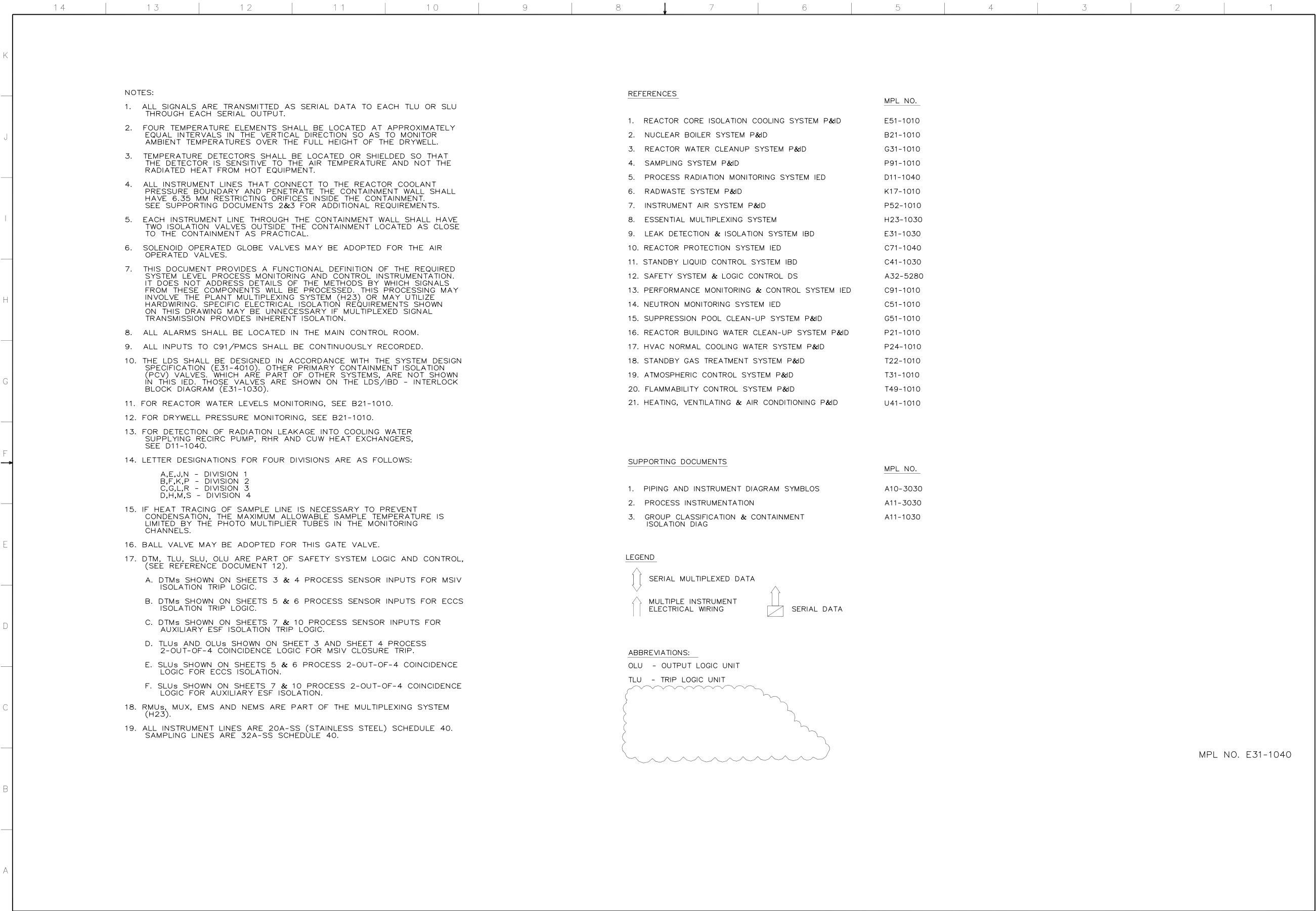


Figure 5.1-3 Nuclear Boiler System P&ID (Sheet 10 of 11)



18. RMUs, MUX, EMS AND NEMS ARE PART OF THE MULTIPLEXING SYSTEM (H23).

19. ALL INSTRUMENT LINES ARE 20A-SS (STAINLESS STEEL) SCHEDULE 40. SAMPLING LINES ARE 32A-SS SCHEDULE 40.

REFERENCES

SUPPORTING DOCUMENTS

LEGEND

SERIAL MULTIPLEXED DATA

MULTIPLE INSTRUMENT ELECTRICAL WIRING

SERIAL DATA

ABBREVIATIONS:

OLU - OUTPUT LOGIC UNIT

TLU - TRIP LOGIC UNIT

MPL NO. E31-1040

Figure 5.2-8 – Leak Detection and Isolation System IED (Sheet 1 of 10)

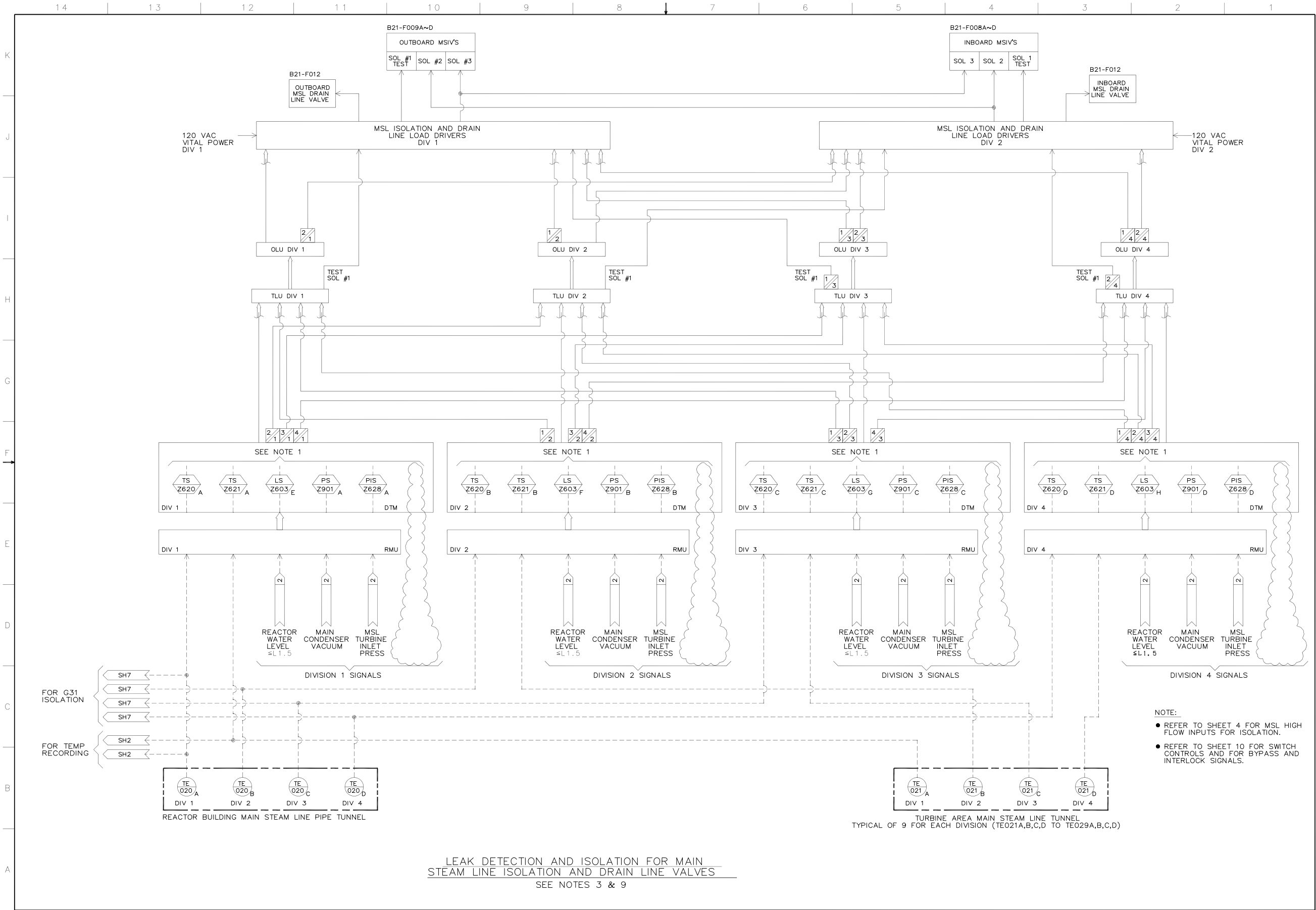


Figure 5.2-8 – Leak Detection and Isolation System IED (Sheet 3 of 10)

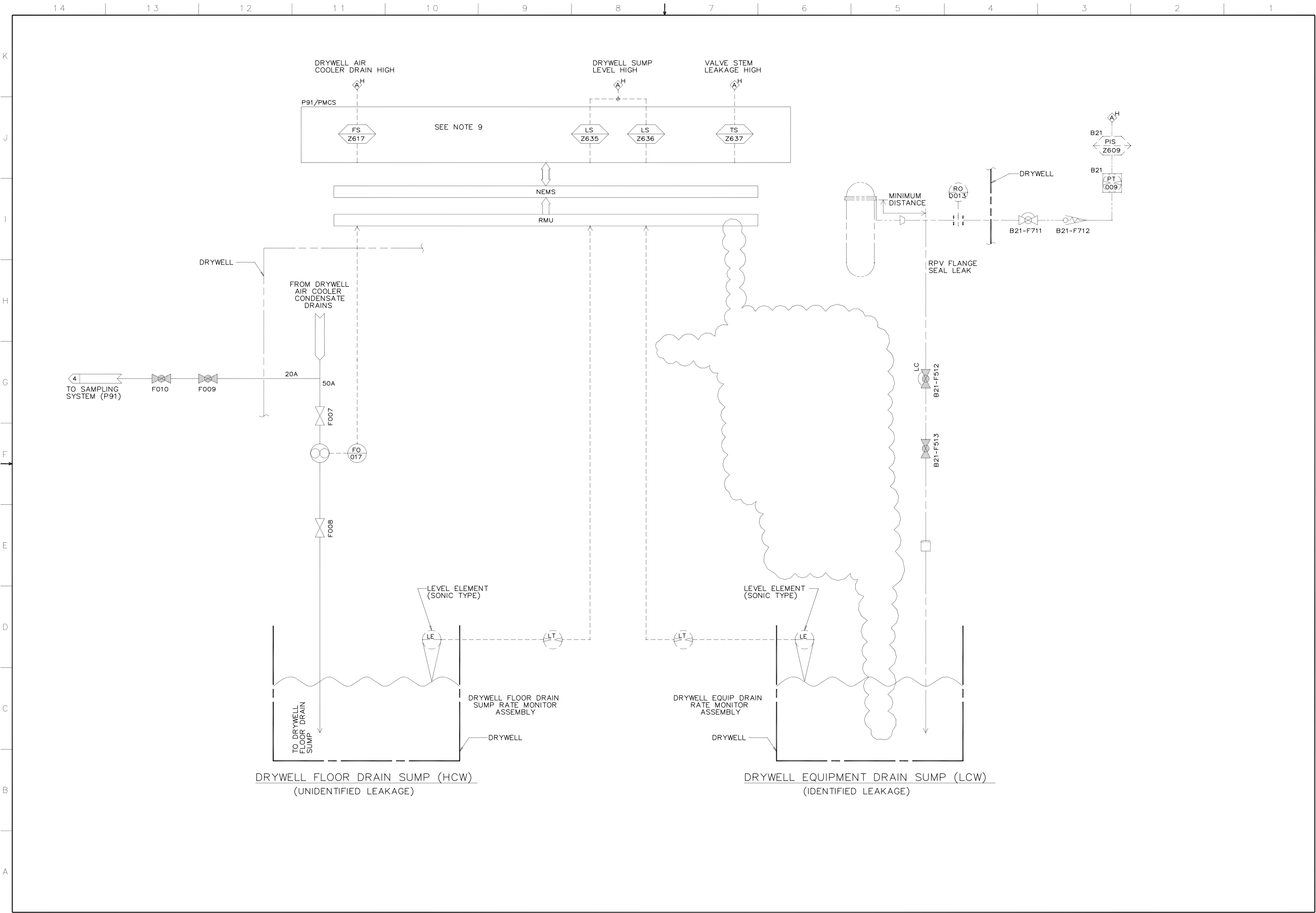


Figure 5.2-8 – Leak Detection and Isolation System IED (Sheet 8 of 10)

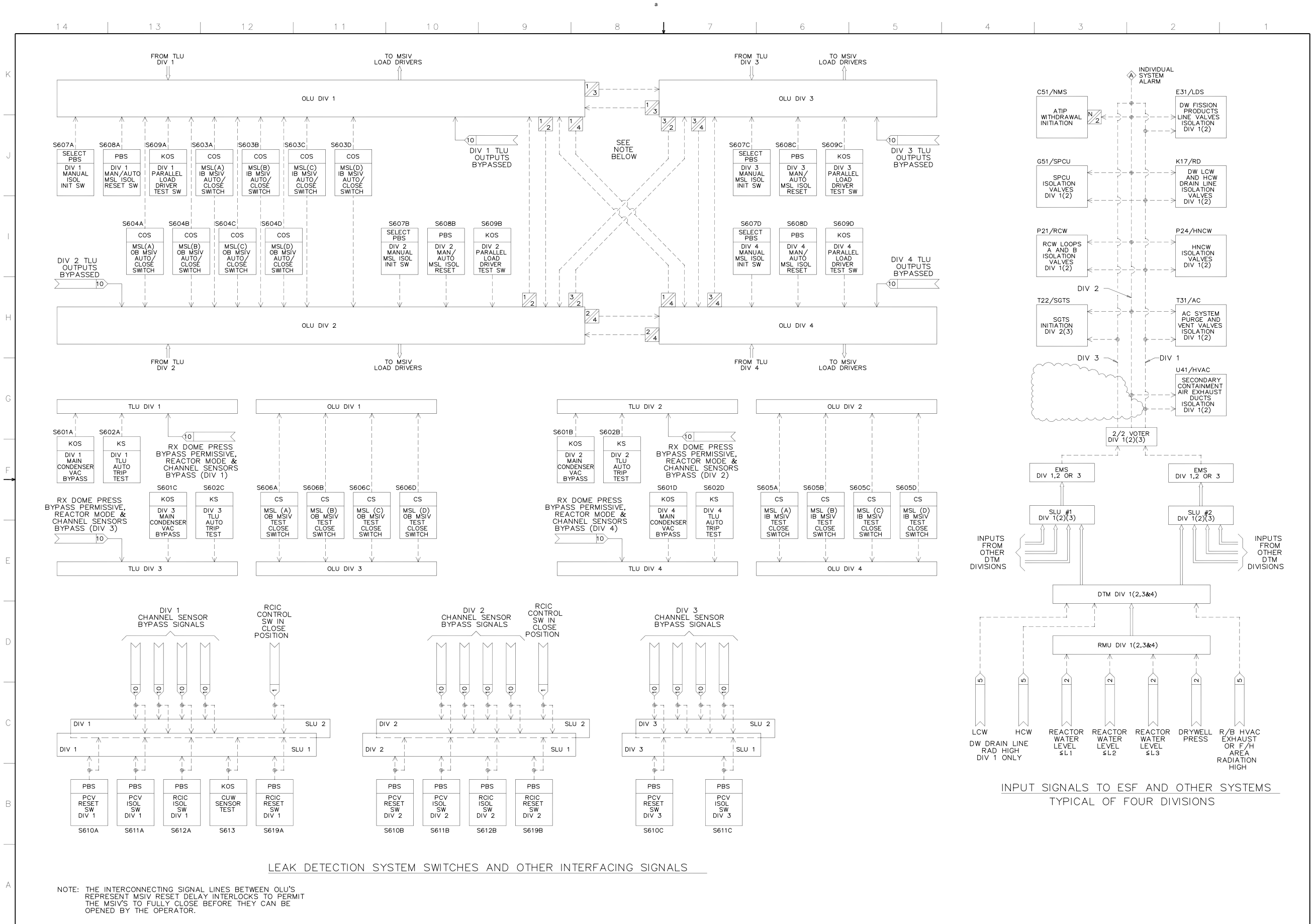


Figure 5.2-8 – Leak Detection and Isolation System IED (Sheet 10 of 10)

