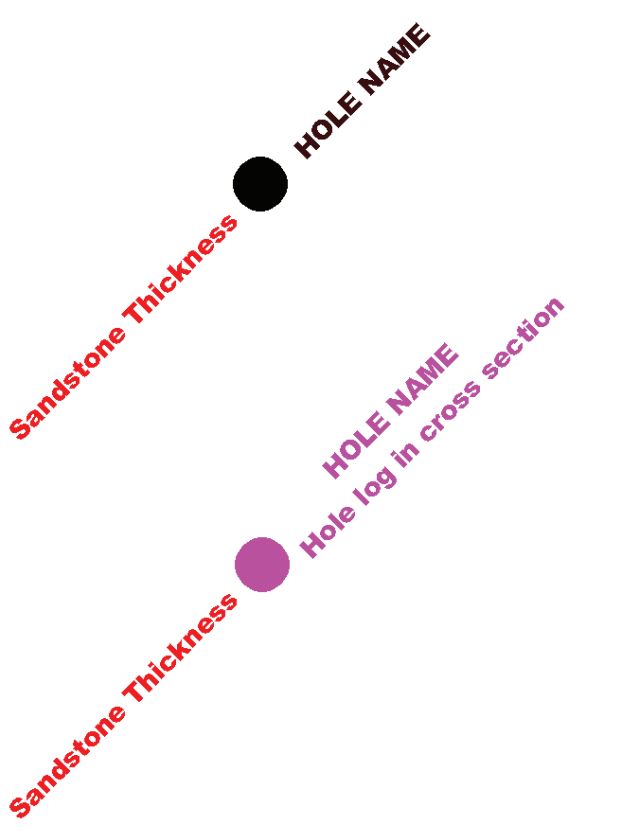
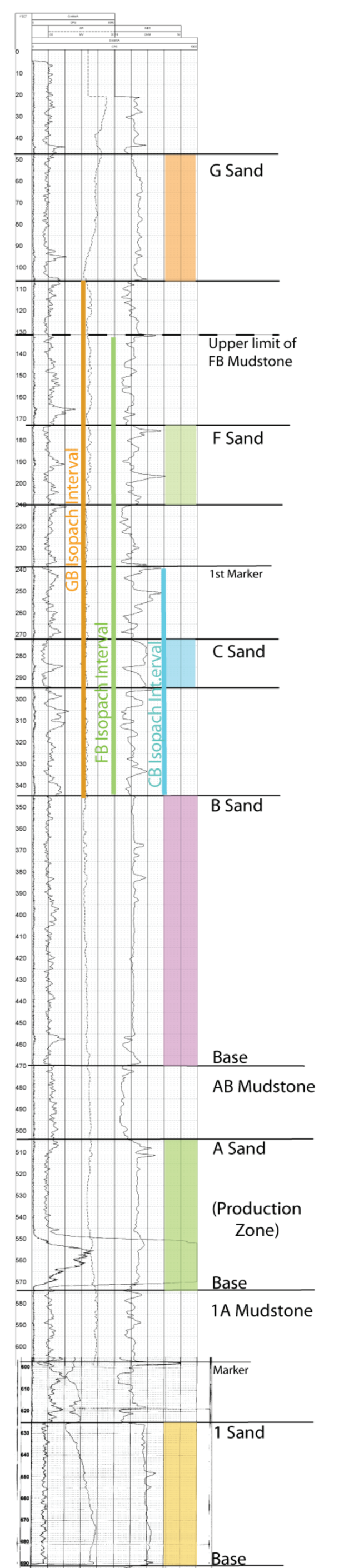
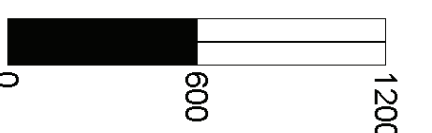


Jane Dough Composite Log



The hole names on this map have been modified due to the scale of the map. The first 4 characters on most of the hole names were omitted. For example A36-29-001 is labeled 29-001. All hole locations are labeled with unique names.



NICHOLS RANCH ISR PROJECT	
EXHIBIT JD-D5-24	
JANE DOUGH UNIT	
FB MUDSTONE ISOPACH MAP	
BY: B. LARSON	DATE: 04/03/15
CONTOR INTERVAL: 20'	REV. DATE:
SCALE: 1" = 600'	REV. #
FILE LOCATION: T:\Geology-Hydrology\Jane Dough\Rockworks	