

**Cameco Resources  
Crow Butte Operation**



**86 Crow Butte Road  
P.O. Box 169  
Crawford, Nebraska 69339-0169**

**(308) 665-2215  
(308) 665-2341 – FAX**

April 8, 2015

**CERTIFIED MAIL  
RETURN RECEIPT REQUESTED**

Attn: Document Control Desk, Director  
Office of Nuclear Material Safety and Safeguards  
U.S. Nuclear Regulatory Commission  
Washington, D.C. 20555-0001

2014 Annual ALARA Report  
Source Materials License SUA-1534  
Docket Number 40-8943

Dear Director:

Enclosed please find a copy of the Crow Butte Mine 2014 Annual ALARA Report and 2014 Land Use Survey. These reports are required under License Condition 11.2 of Source Materials License SUA-1534 (November 2014).

If you have any questions, please feel free to contact me at (308) 665-2215 ext 114.

Sincerely,  
CAMECO RESOURCES  
CROW BUTTE OPERATION

Larry Teahon  
SHEQ Manager

Attachments: As Stated

cc: CBO - File  
ec: Shar Sapp – NDEQ Chadron Field Office  
CR – Casper Office

NMSSOI

# Interoffice

## Memo



Cameco Resources  
Crow Butte Operation

---

**Date:** February 23, 2015

**To:** File

**From:** Larry Teahon, SHEQ Manager *LT*  
Tami Dyer, Radiation Safety Officer *TD*

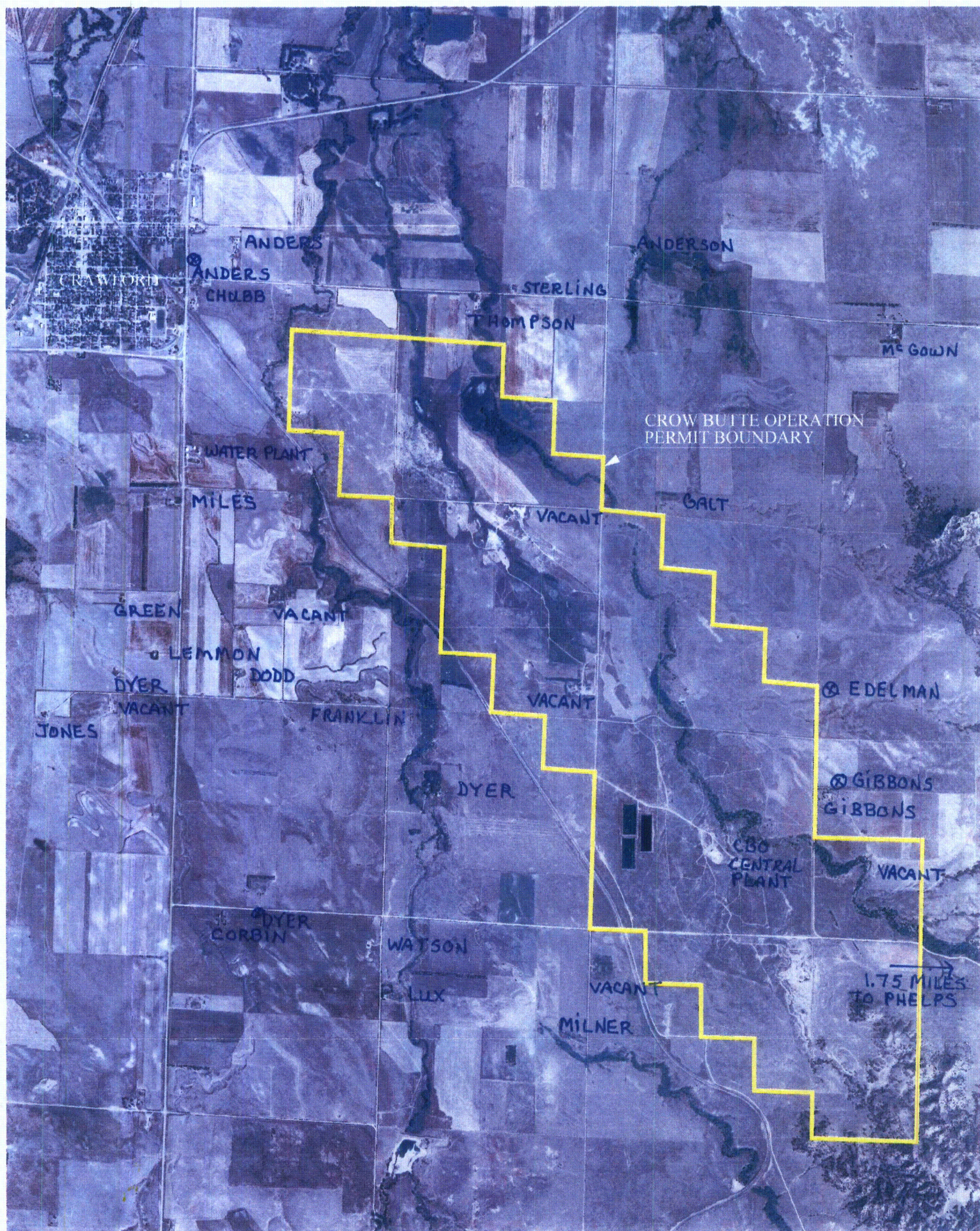
**Re:** License Renewal (November 2014) License Condition 11.2, Land Use Survey

---

Source Material License SUA-1534 (Renewed November 2014) License Condition 11.2 requires the licensee to conduct an annual land use survey. This survey was conducted by the Radiation Safety Officer and SHEQ Manager using aerial maps, interviews and ground verification. Attached is an aerial photo of the survey. No new occupied structures were identified that would affect dose to the public of the nearest resident to the Crow Butte operation.



75  
TD



2014 LAND USE SURVEY  
LICENSE CONDITION 11.2  
2/23/15