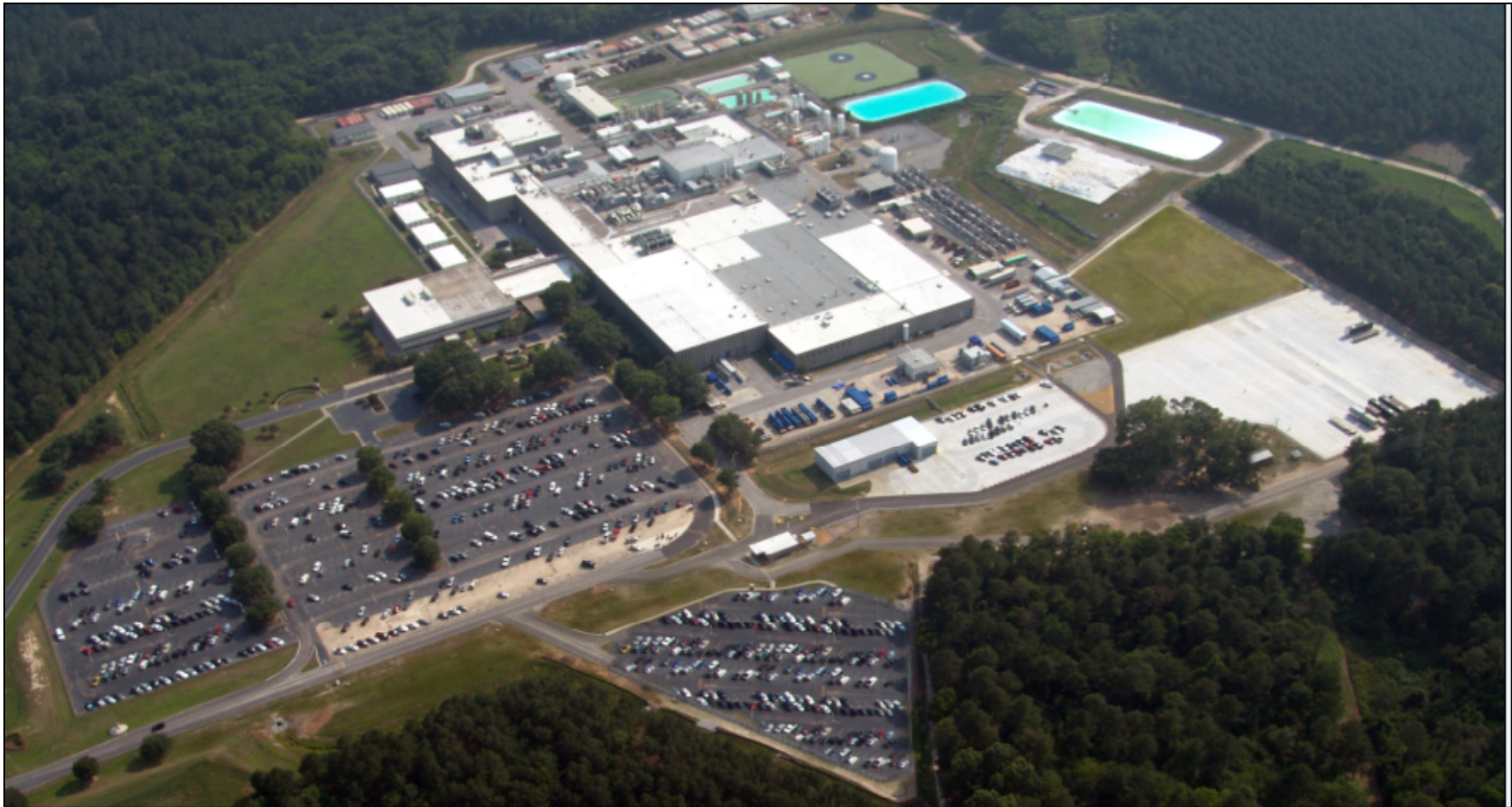


Westinghouse Columbia Fuel Fabrication Facility

Licensee Performance Review – April 14, 2015

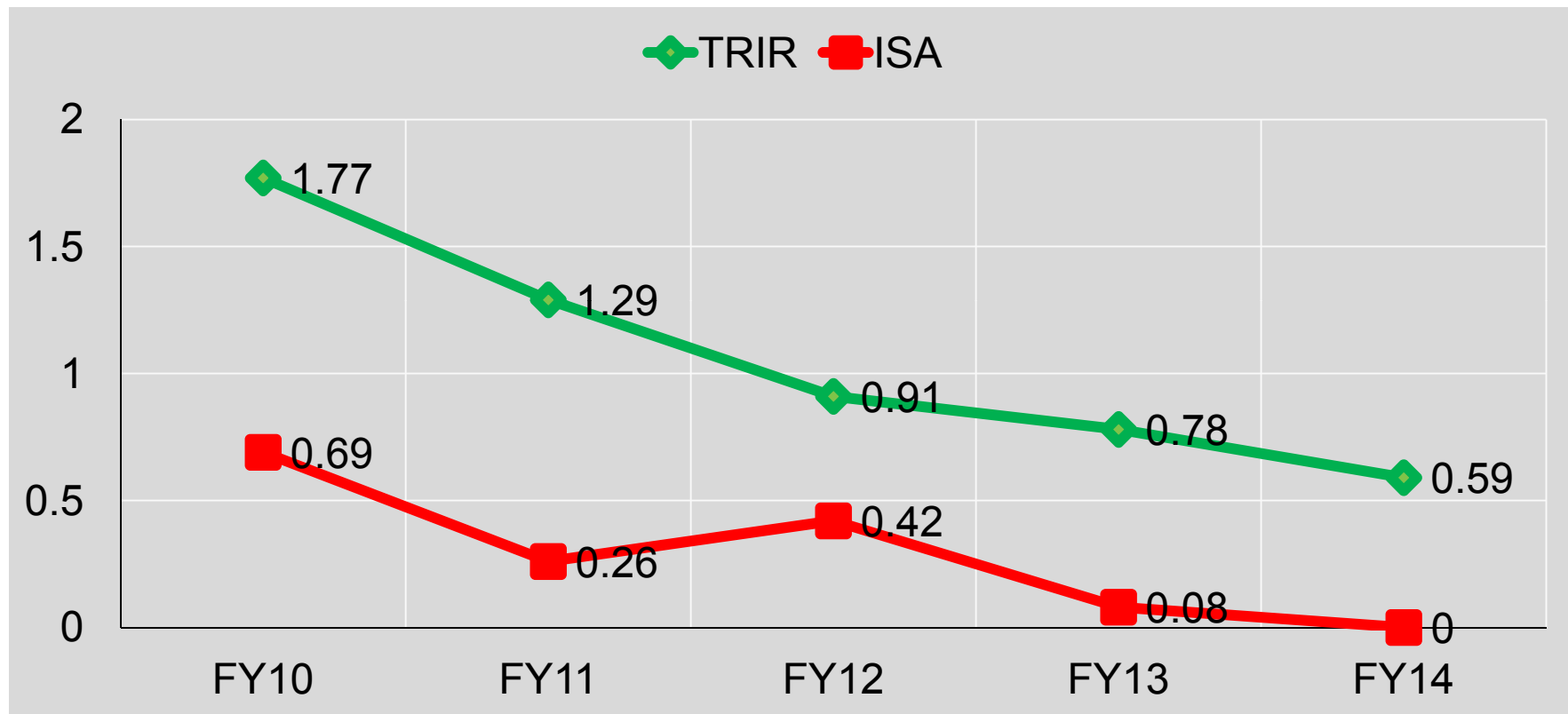


Westinghouse Performance Perspective

- Westinghouse concurs with the NRC's assessment that the Columbia Fuel Fabrication Facility “has continued to conduct its activities safely and securely, while protecting public health and the environment.”
- Even so, we continue to raise the bar on performance each year to drive further improvement in our processes and programs.

Industrial Safety

We continue to make year-over-year improvements.

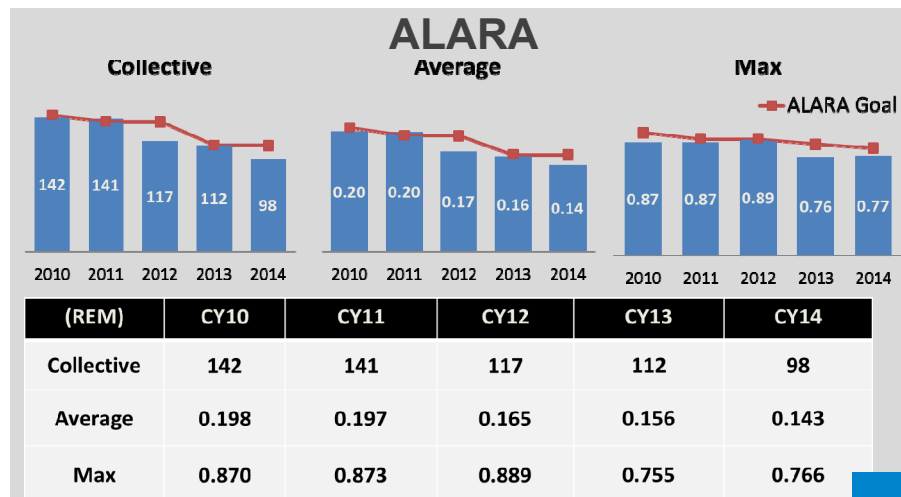
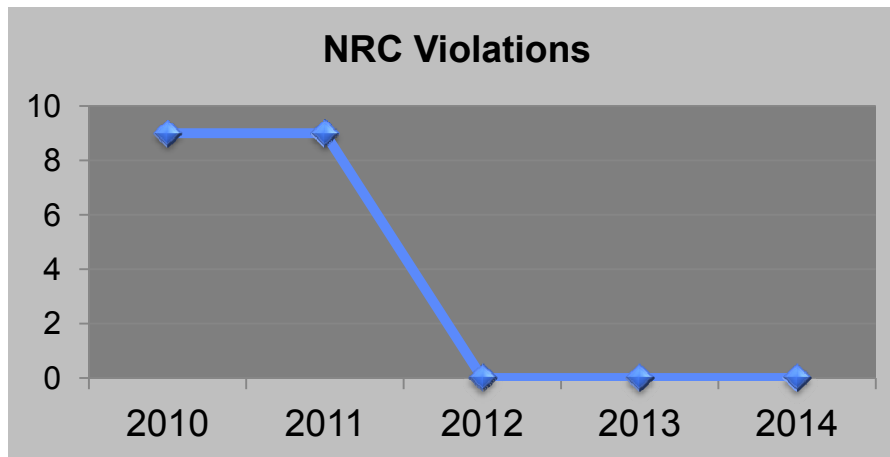


We strive for zero accidents and world-class performance!



Nuclear Safety

This, too, has improved, but we are driving to get better.



- The nuclear criticality safety improvement program resulted in a much more robust process.
 - ✓ Started in 2004
 - ✓ Added passive engineered controls
 - ✓ Reduced administrative controls
 - ✓ Completed in Dec. 2014
- Human Performance
 - ✓ Worker/Knowledge worker training
- Aggressive Internal Audits
 - ✓ EH&S QA, Peer Review, INPO
- Employee exposure continues to decline due to ALARA program activities.
 - ✓ Employee involvement with dose reduction projects
 - ✓ Improved communication, event reporting and trending
 - ✓ Technician observations



A healthy nuclear safety culture is the foundation for these improvements!

Emergency Brigade

The team continues to raise its performance.

- Injury-free for more than four years – it can be done!
- We now have 41 of the nation's 188 nationally certified industrial Emergency Response specialists employed at Columbia.
- We continue to lead a community fire brigade coalition to raise our standards and help others raise theirs.
- Investments were made to improve several parts of the fire protection system.
- Fourteen new volunteer members were added.

Security

This is another important area where we drive improvement.

Examples of recent enhancements:

- Continued partnering with local first responders, both fire and law enforcement - Richland County, SLED, Homeland Security, Columbia Fire, other industrial sites
- Established an Active Shooter Detection, Mitigation and Response program and provided training for other industrial sites
- Further limitations on access to CFFF
- Invested in physical security and cyber security upgrades



Columbia Fuel Fabrication Facility

What we do matters, and we understand this!

- Westinghouse continues to promote healthy dialogue and open communication to assure we meet expectations of the NRC and the public.
- Westinghouse continues to engage in the community to maintain public trust.
- Westinghouse continues to drive improvement in all aspects of our operations.