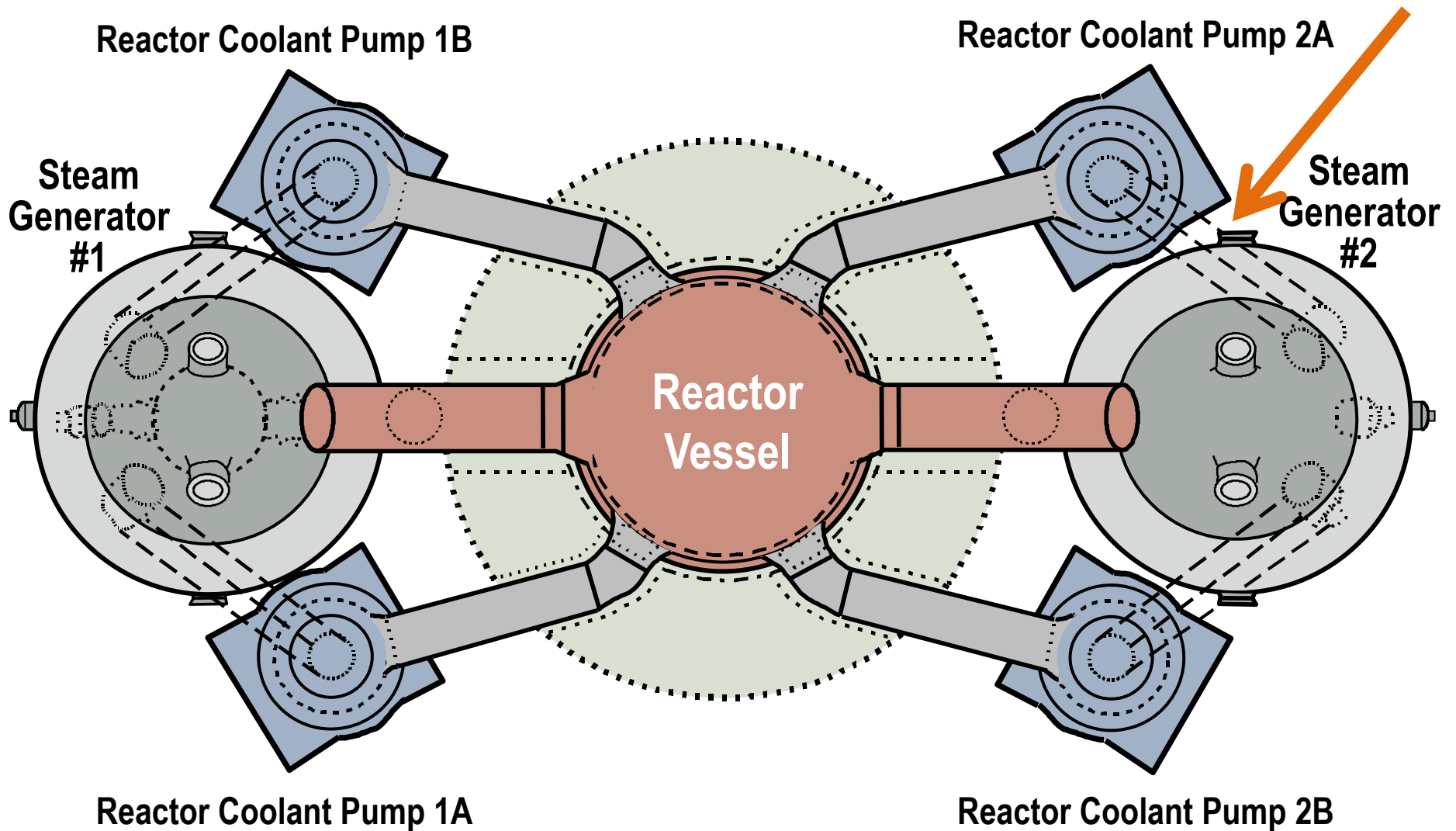


Unit 3 Reactor Coolant Pump 2A Pressure Instrument Nozzle

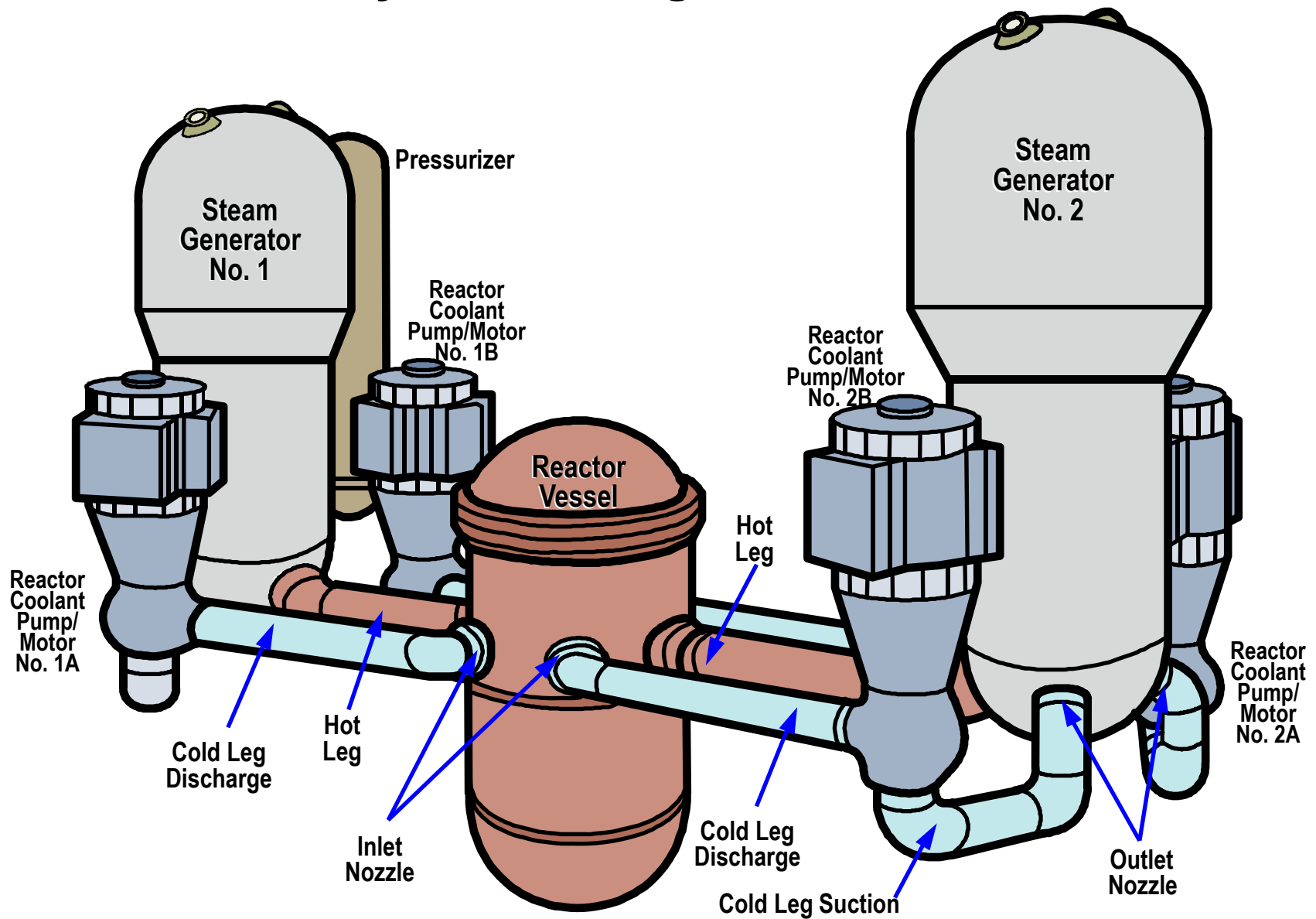
PVNGS Regulatory Affairs
April 9, 2015



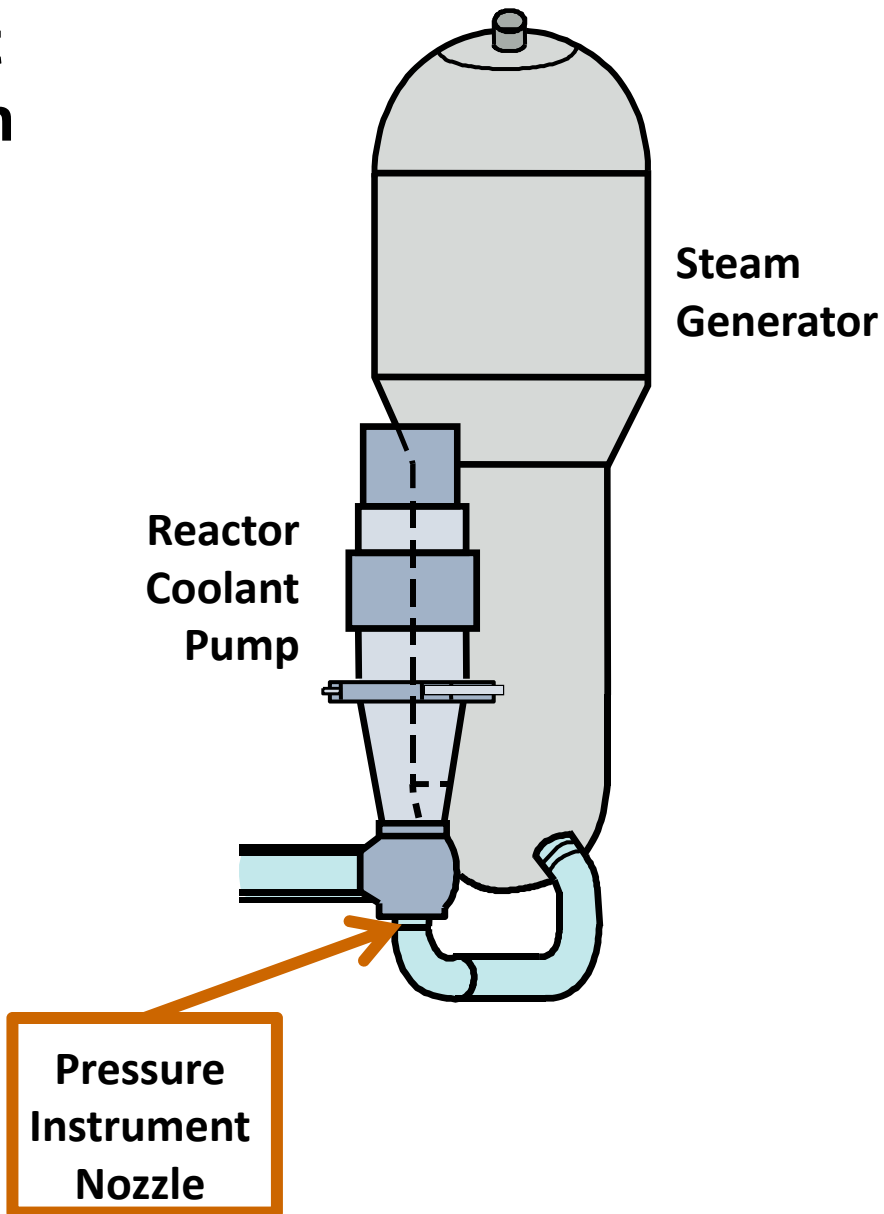
Reactor Coolant System Arrangement Top View



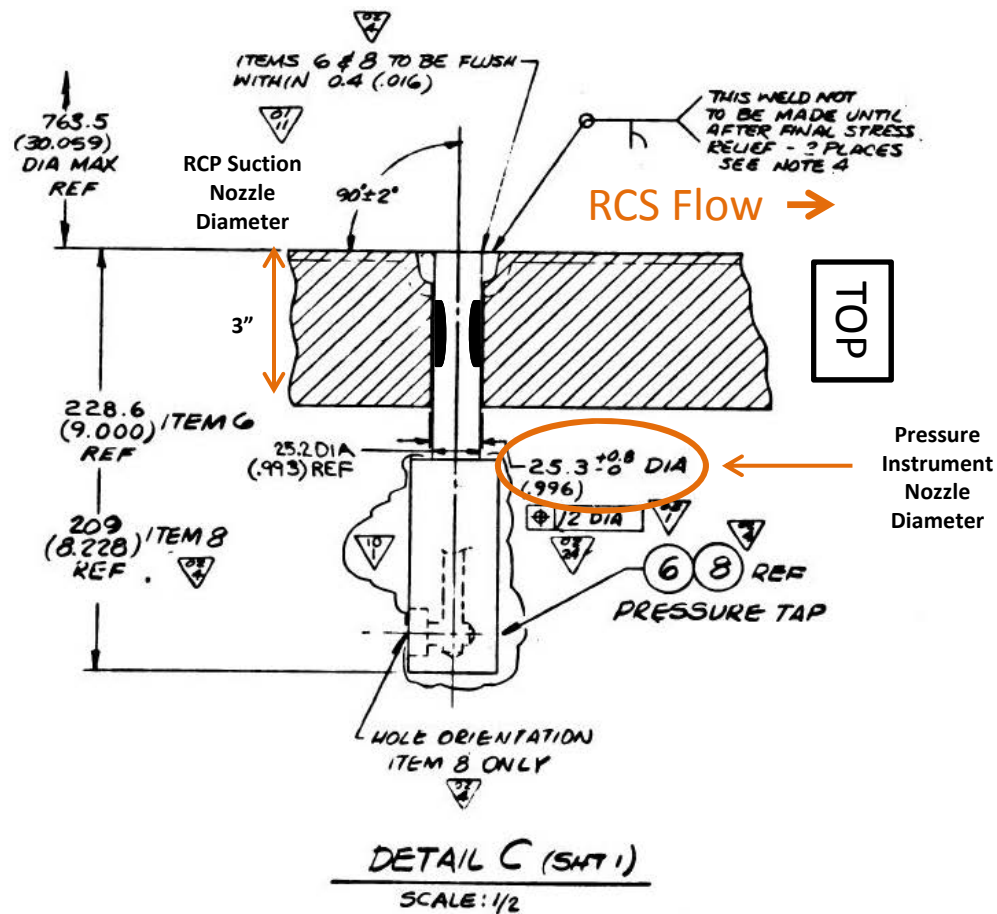
Reactor Coolant System Arrangement



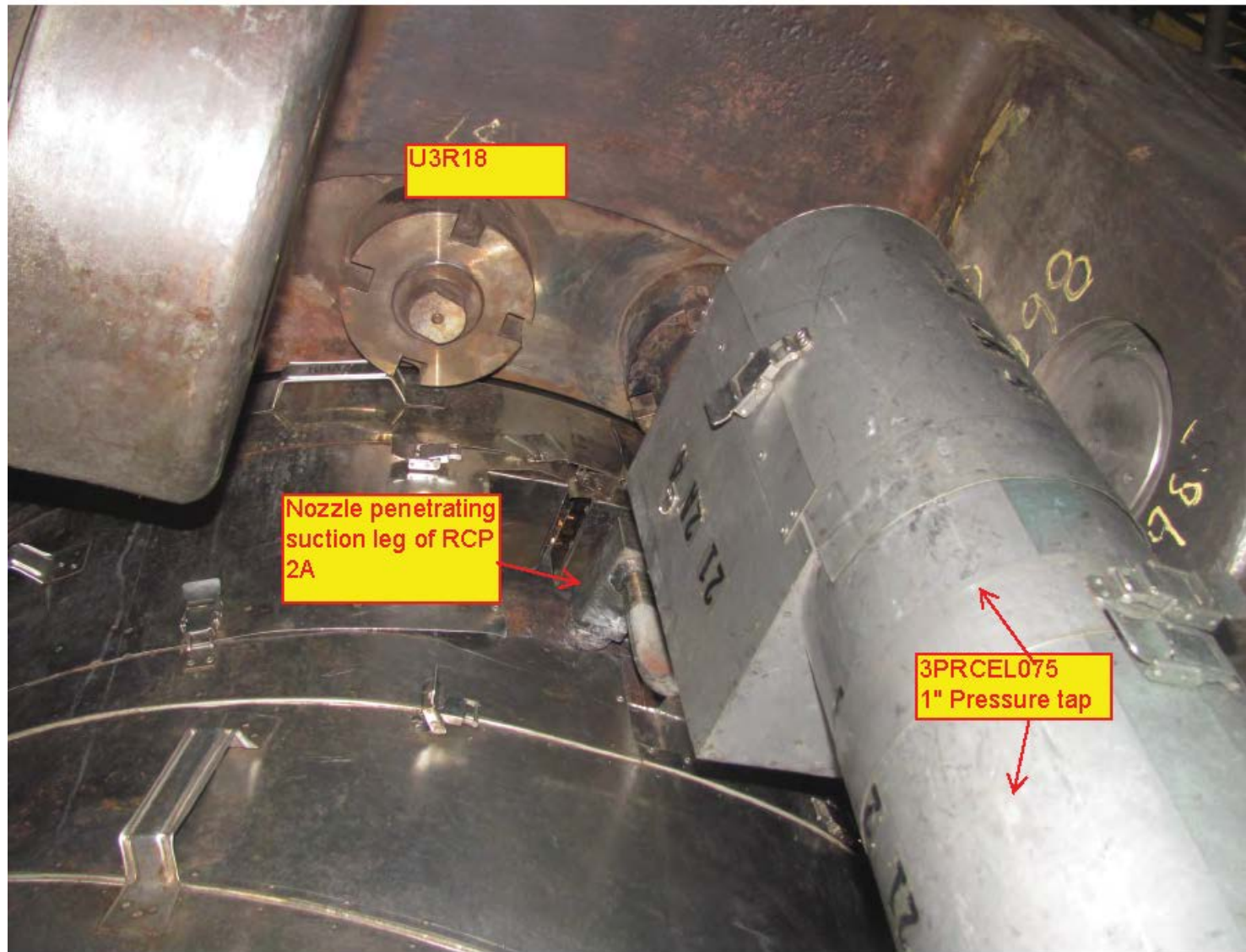
2A Reactor Coolant Pump 180° Rotation



Pressure Instrument Nozzle Cutaway



As-Found Leakage Indication (with insulation)



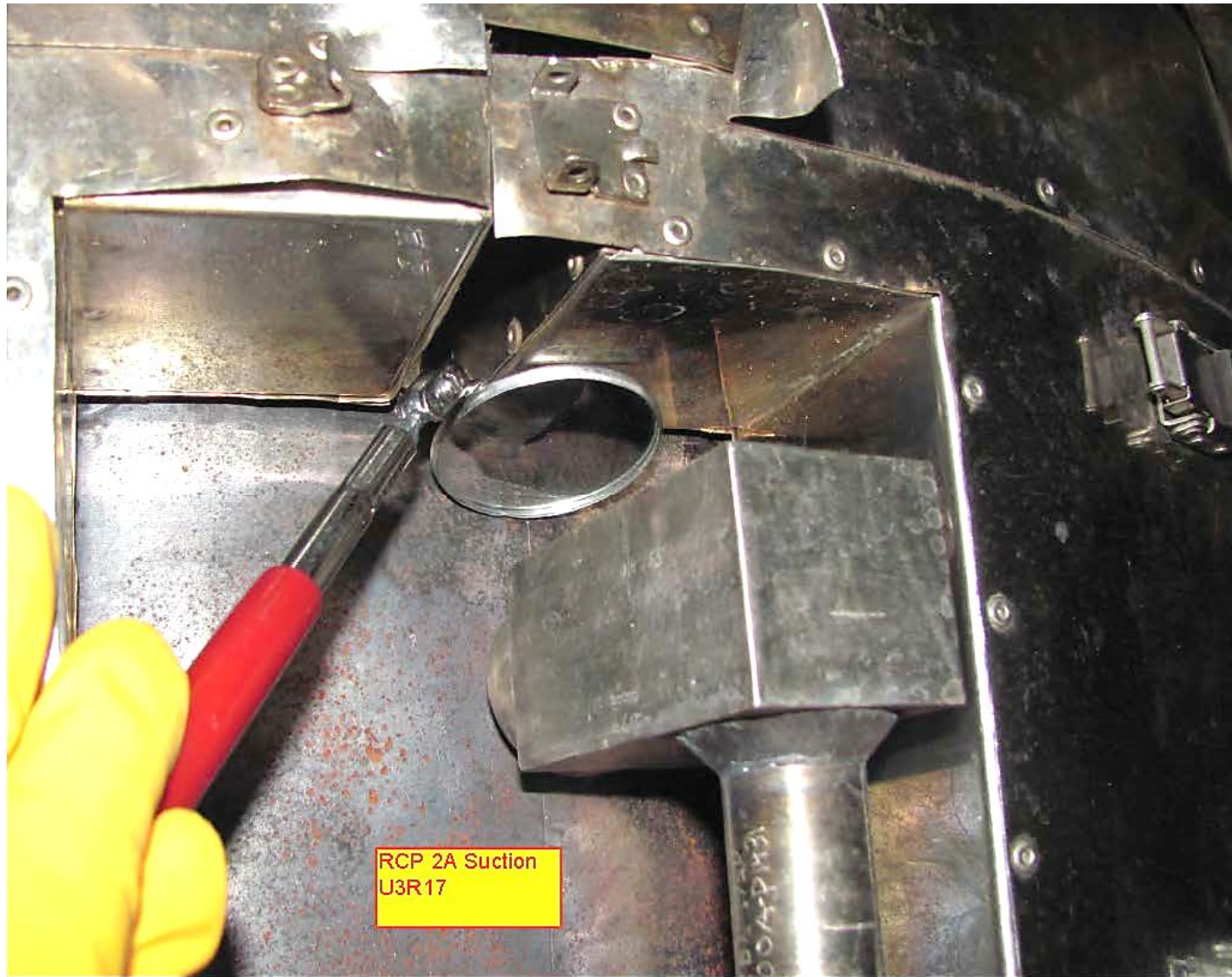
As-Found Leakage Indication



As-Found Leakage Indication (after insulation removal)

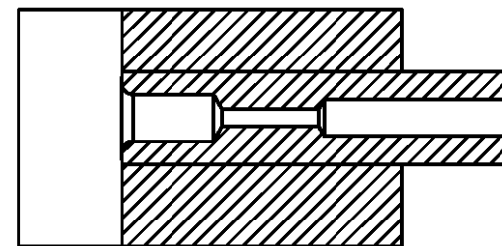
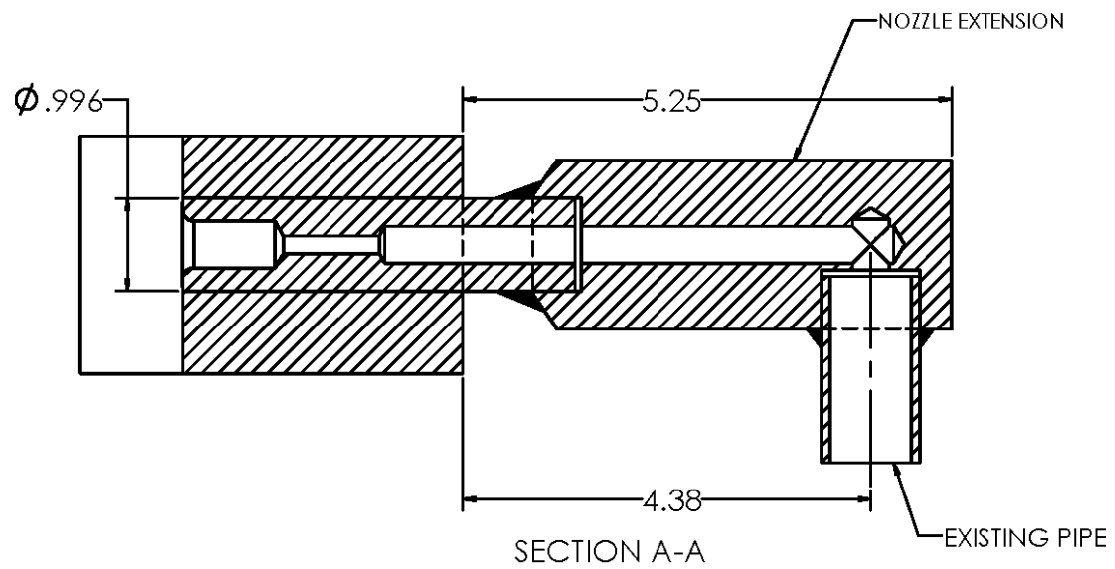


3R17 (2013) As-Found – No Indications



As-Is Configuration

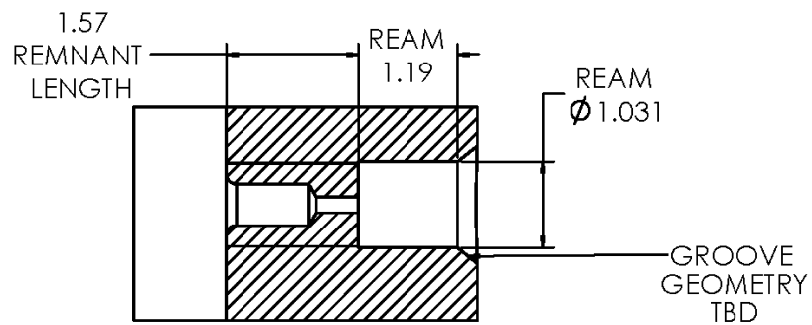




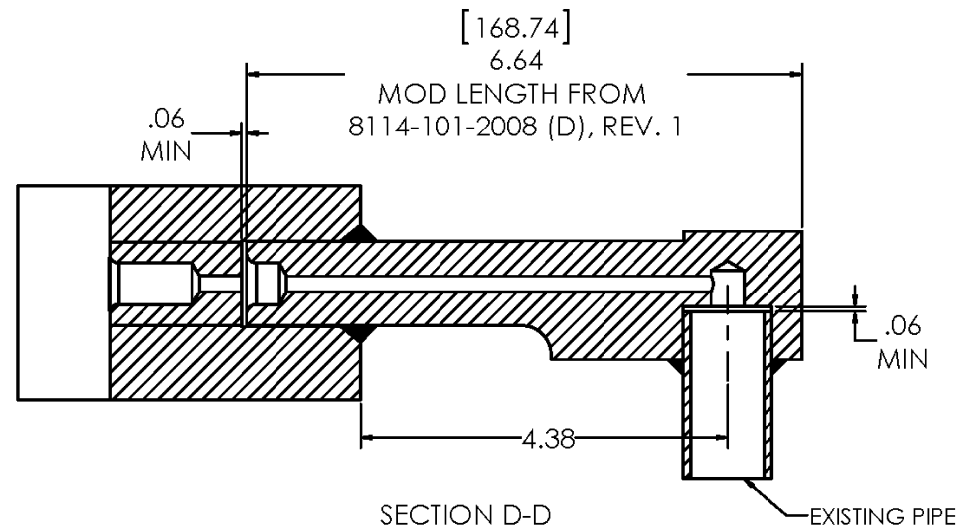
SECTION B-B
REMOVE THE NOZZLE
EXTENSION PIECE AND CONNECTING
WELDS SHOWN IN SECTION A-A

Half-Nozzle Repair





SECTION C-C
 DRILL AND REMOVE A LARGE PORTION
 OF THE NOZZLE LEAVING A SHORT REMNANT OF THE ORIGINAL ORIFICE.
 MACHINE/GRIND A NEW PARTIAL PENETRATION
 WELD PREP INTO THE CASING EXTENSION BASE MATERIAL



SECTION D-D
 INSTALL NEW REPLACEMENT ONE PIECE
 NOZZLE BY WELDING A NEW PARTIAL
 PENETRATION WELD. INSTALL THE VERTICAL
 STAINLESS STEEL PIPE WITH A SOCKET WELD.

Questions

