

FIGURES

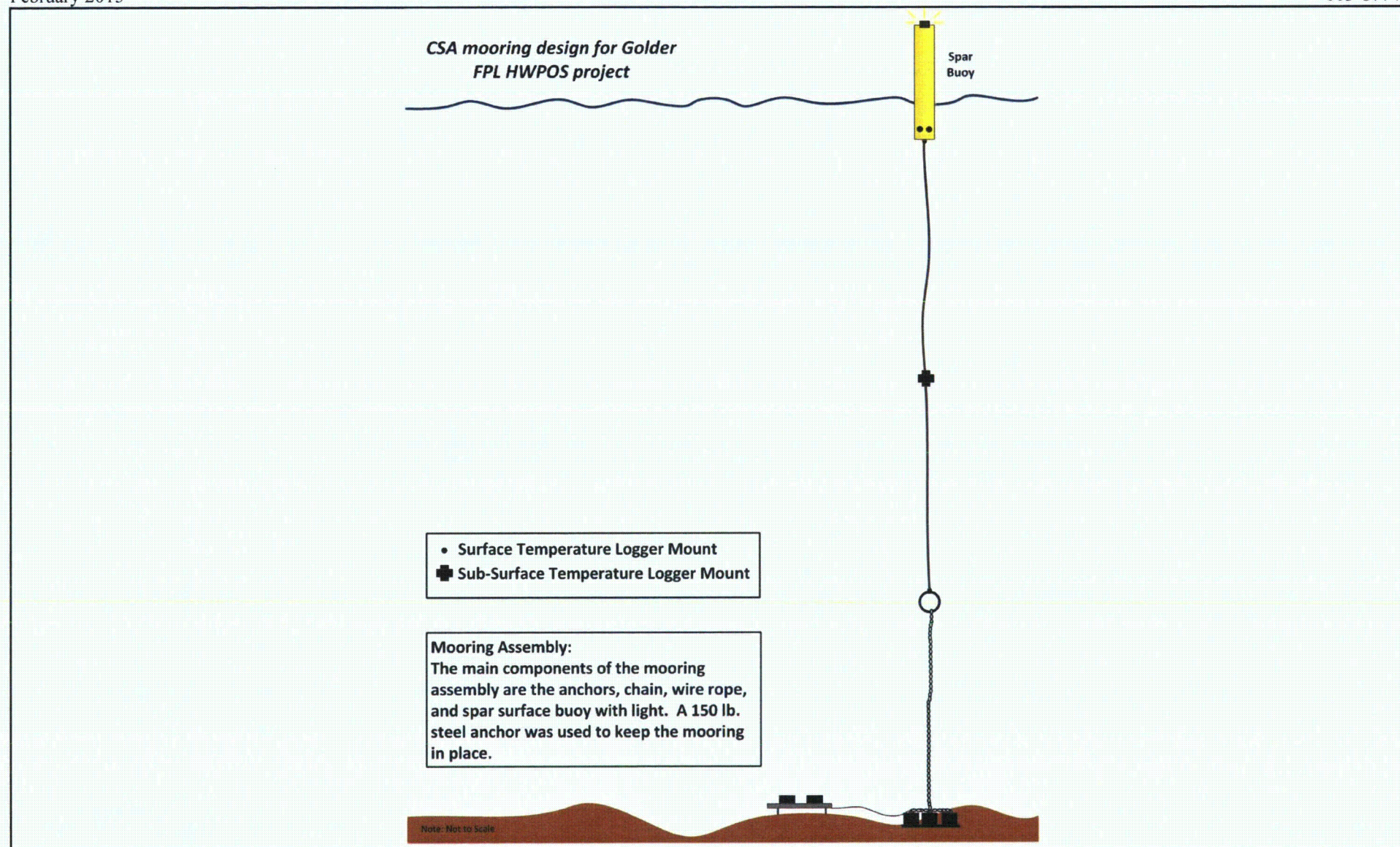


Figure 1
Mooring design for thermal monitoring stations (CSA, 2015)
Stephen LarsenFigure 1_mooring_design.docx

Source: Golder, 2014.



**FPL HWPOS
Mooring Modification
July 7, 2014**

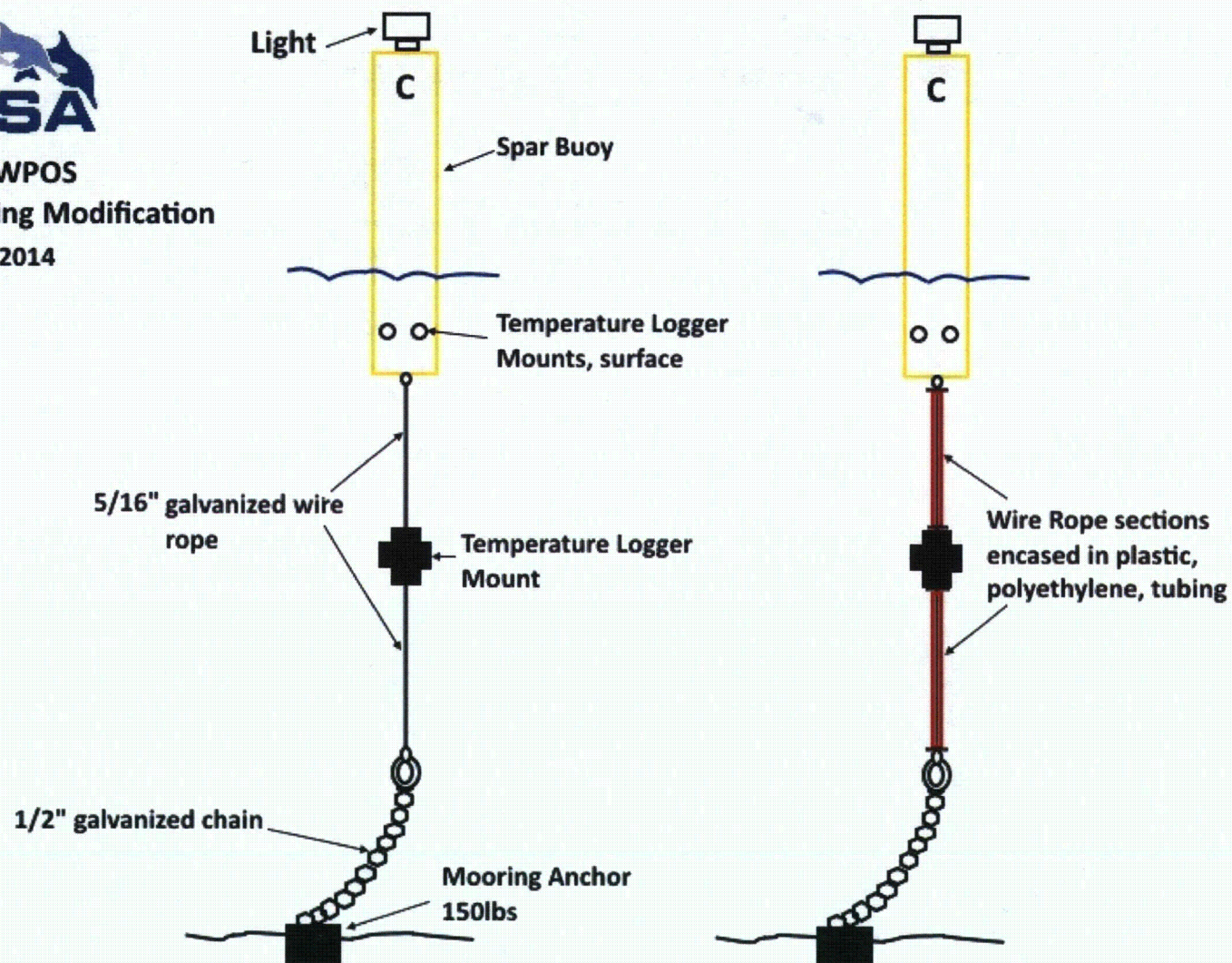


Figure 2
Mooring retro-fit to prevent marine life entanglement (CSA, 2015)
Stephen Larsen Figure 2_mooring_retrofit.docx

Source: Golder, 2014.



LEGEND

Monitoring Stations

- Thermal Monitoring Buoy Locations
- Acoustic Doppler Current Profile (ADCP) Locations
- Offshore Intake (Approximate)
- Discharge Pipes (Approximate)

REFERENCE(S)

MONITORING STATIONS, GOLDER ASSOCIATES INC., 2015
 BATHYMETRY, US ARMY CORPS OF ENGINEERS JOINT AIRBORNE LIDAR BATHYMETRY
 TECHNICAL CENTER OF EXPERTISE (JALBTCX), 2004
 AERIAL IMAGERY, USDA FARM SERVICE AGENCY / NATIONAL AGRICULTURE IMAGERY PROGRAM
 (NAIP), 2013

COORDINATE SYSTEM: NAD 1983 STATEPLANE FLORIDA EAST FIPS 0901 FEET
 PROJECTION: TRANSVERSE MERCATOR
 DATUM: NORTH AMERICAN 1983

CLIENT

FPL
 ST. LUCIE COUNTY, FL

PROJECT

HEATED WATER PLAN OF STUDY

TITLE

**THERMAL AND CURRENT MONITORING STATIONS IN THE
 VICINITY OF THE ST. LUCIE PLANT**

CONSULTANT



YYYY-MM-DD 2015-02-09

DESIGNED GD

PREPARED GD

REVIEWED SJL

APPROVED SJL

PROJECT NO
 11387743

CONTROL
 A003

REV
 0

FIGURE

3



Figure 4
Results of the thermal survey conducted on the day of deployment to determine installation locations for the discharge buoys

Source: Golder, 2014.

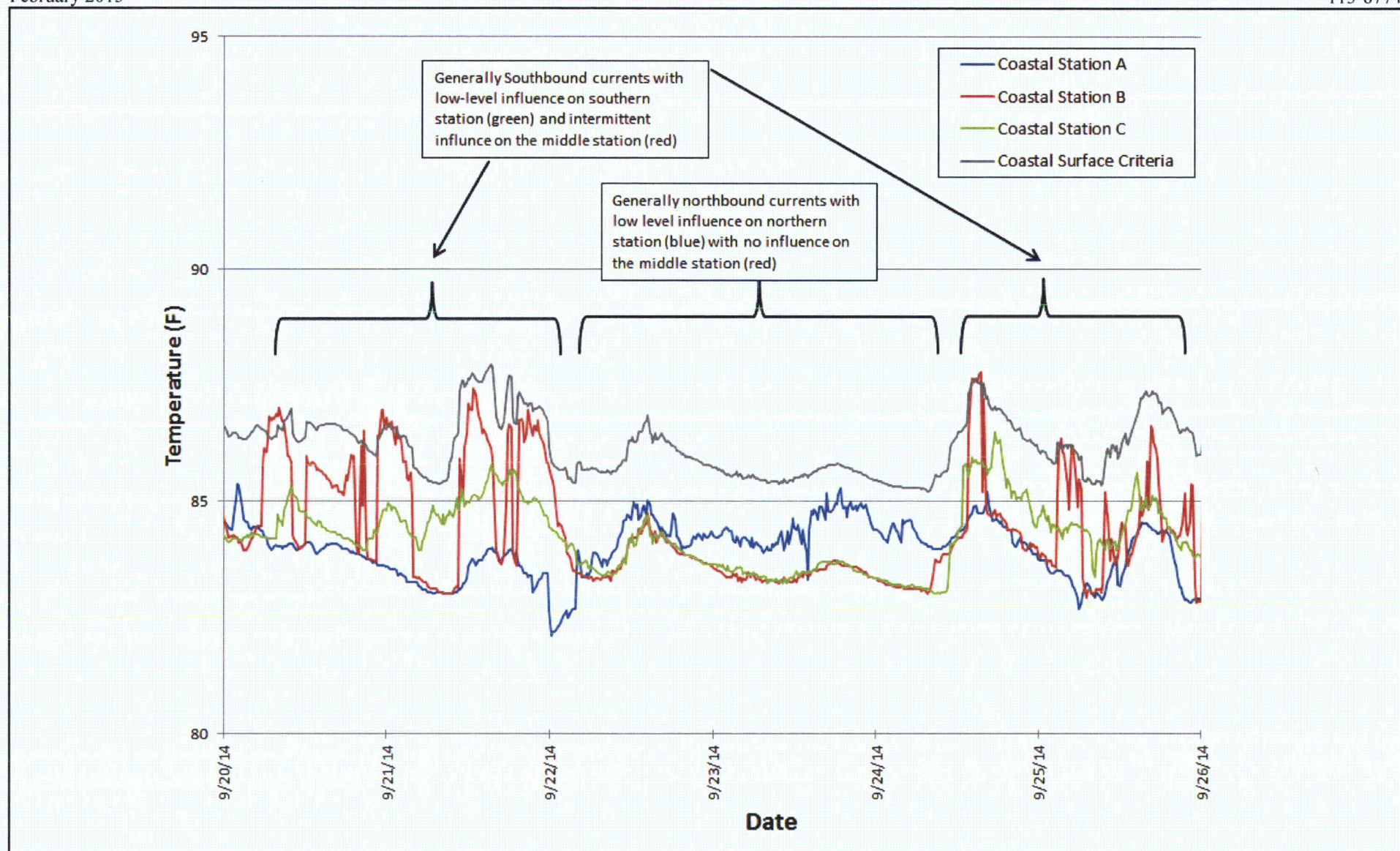


Figure 5

Coastal surface temperatures demonstrating the potential influence of the plume on multiple stations at the same time-steps. Coastal surface criteria is from the initial 'Lower Bound' analysis (20-26 September 2014).

Stephen LarsenFigure 5_influence two stations.docx

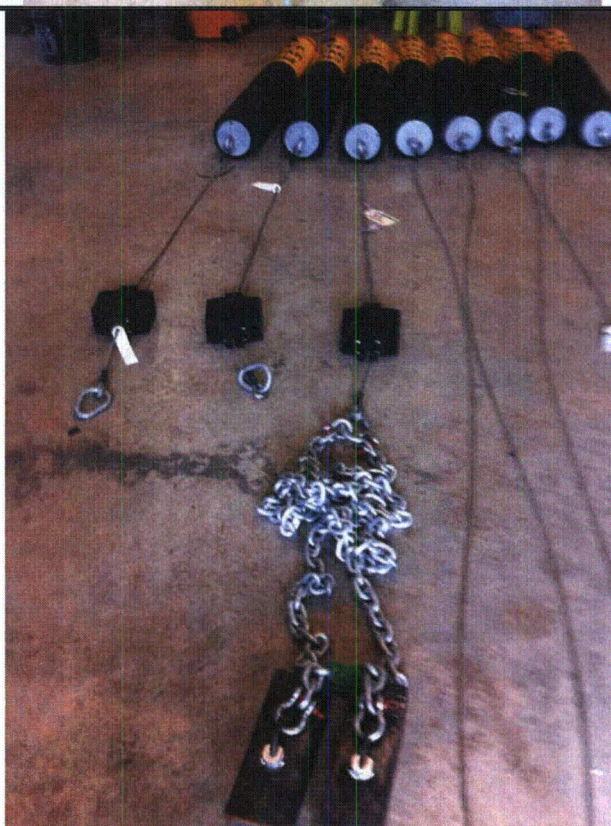
PHOTO LOG

**Photos of mooring equipment and deployment****PHOTO 1**

Spar buoy prior to deployment

**PHOTO 2**

Mooring components with buoy, wire cable, HOBO mount, chain, and anchors



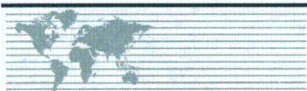


PHOTO 3

HOBO logger bottom mount

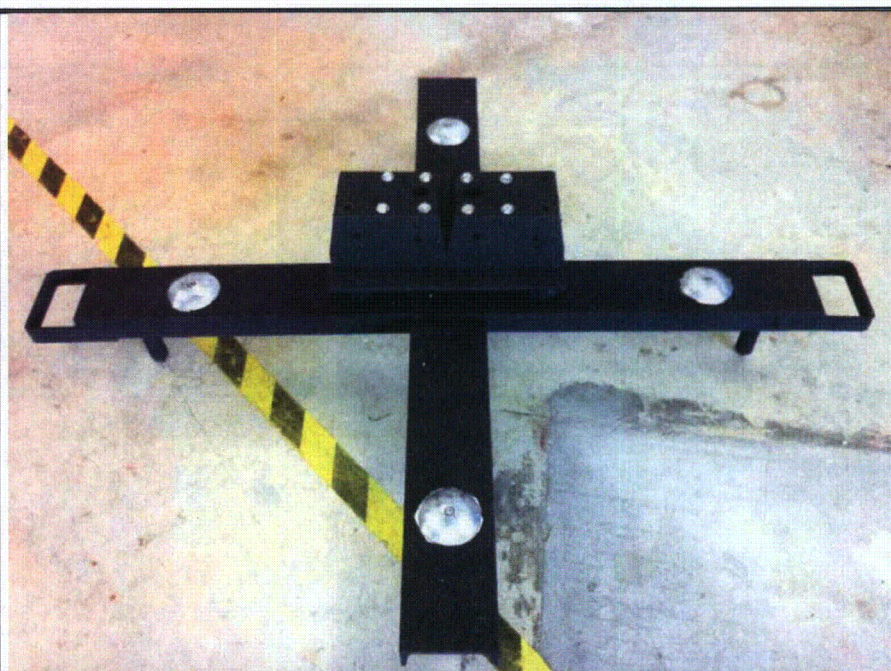


PHOTO 4

ADCP bottom mount

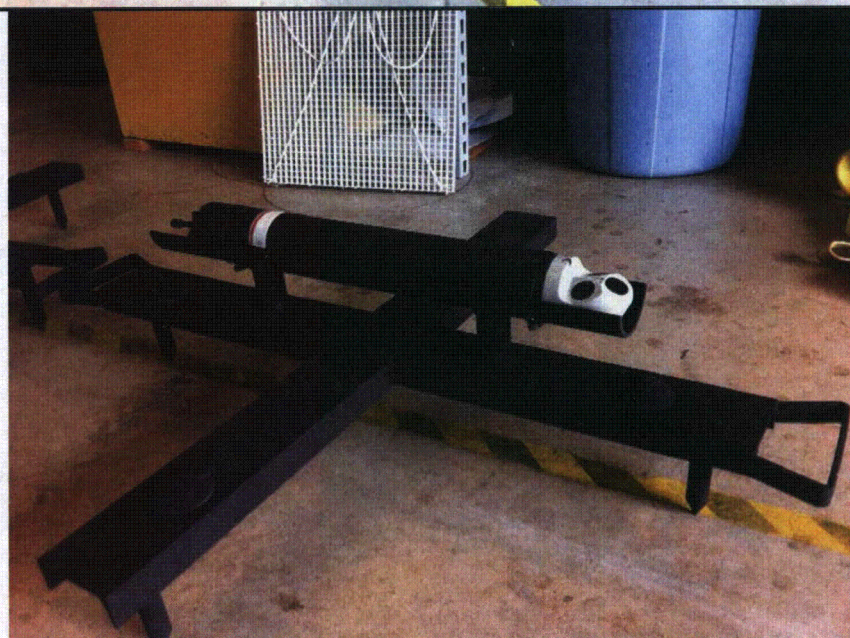




PHOTO 5

HOBO mount prior to deployment near the intake canal headwall



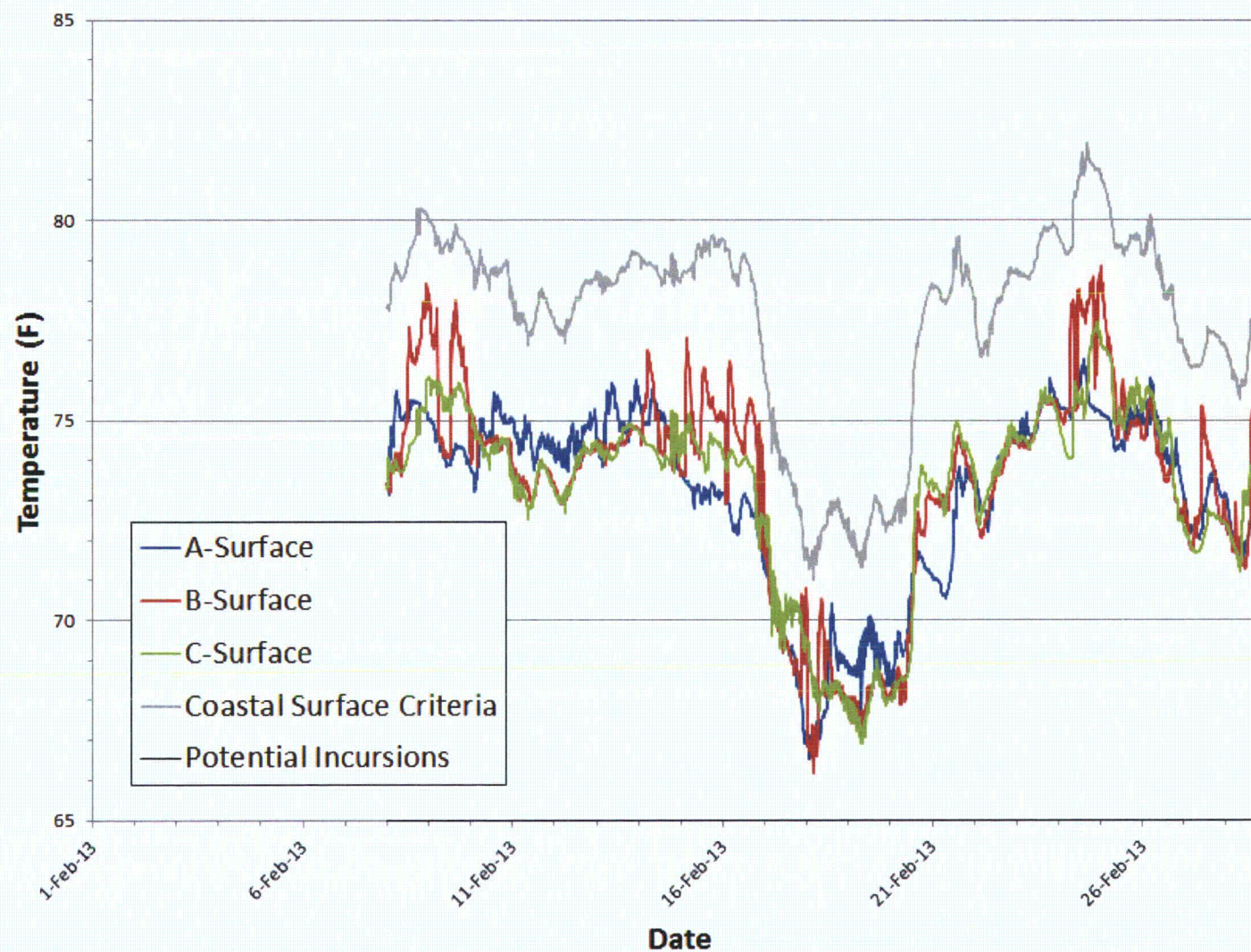
PHOTO 6

Buoy A deployed approximately one mile north of the Plant discharges along the 18 foot depth contour



ATTACHMENT 1

**SEA SURFACE TEMPERATURES AT
COASTAL STATIONS PRESENTED MONTHLY**



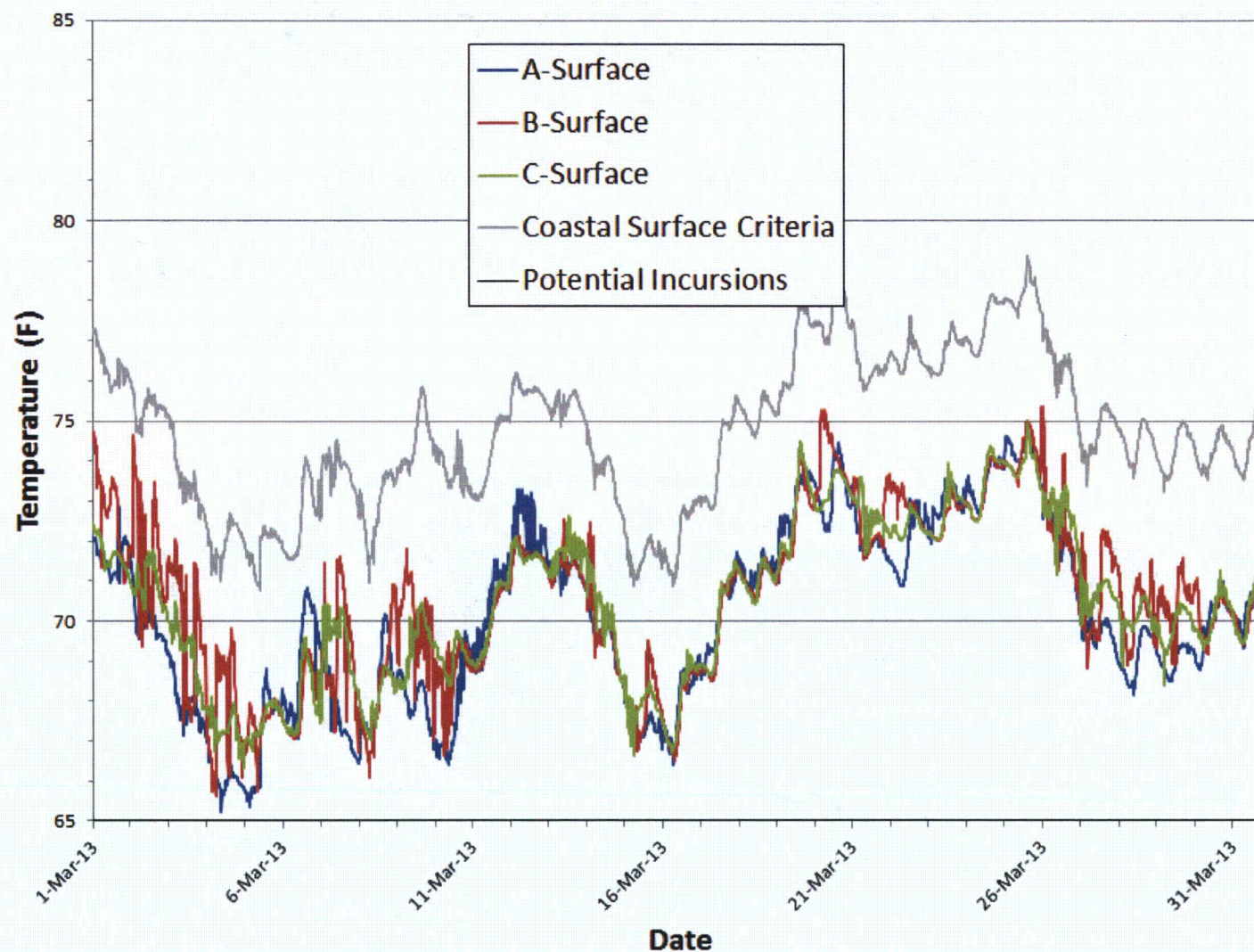
Attachment 1-1

Sea surface temperature at coastal stations (February 2013)

Stephen Larsen1-01_Cstl_2_13_rev.docx

Source: Golder, 2013.





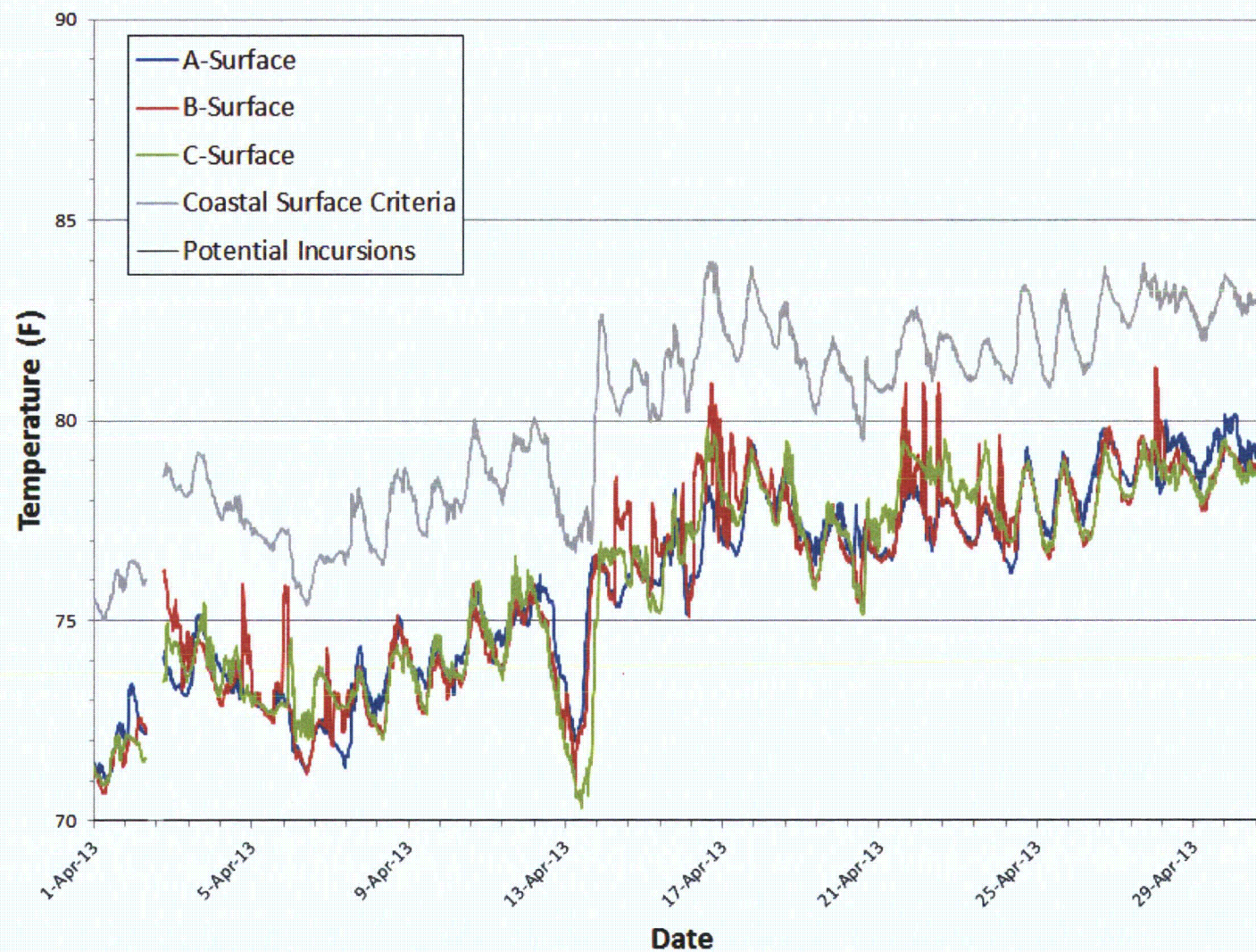
Attachment 1-2

Sea surface temperature at coastal stations (March 2013)

Stephen Larsen1-02_Cstl_3_13_rev.docx

Source: Golder, 2013.



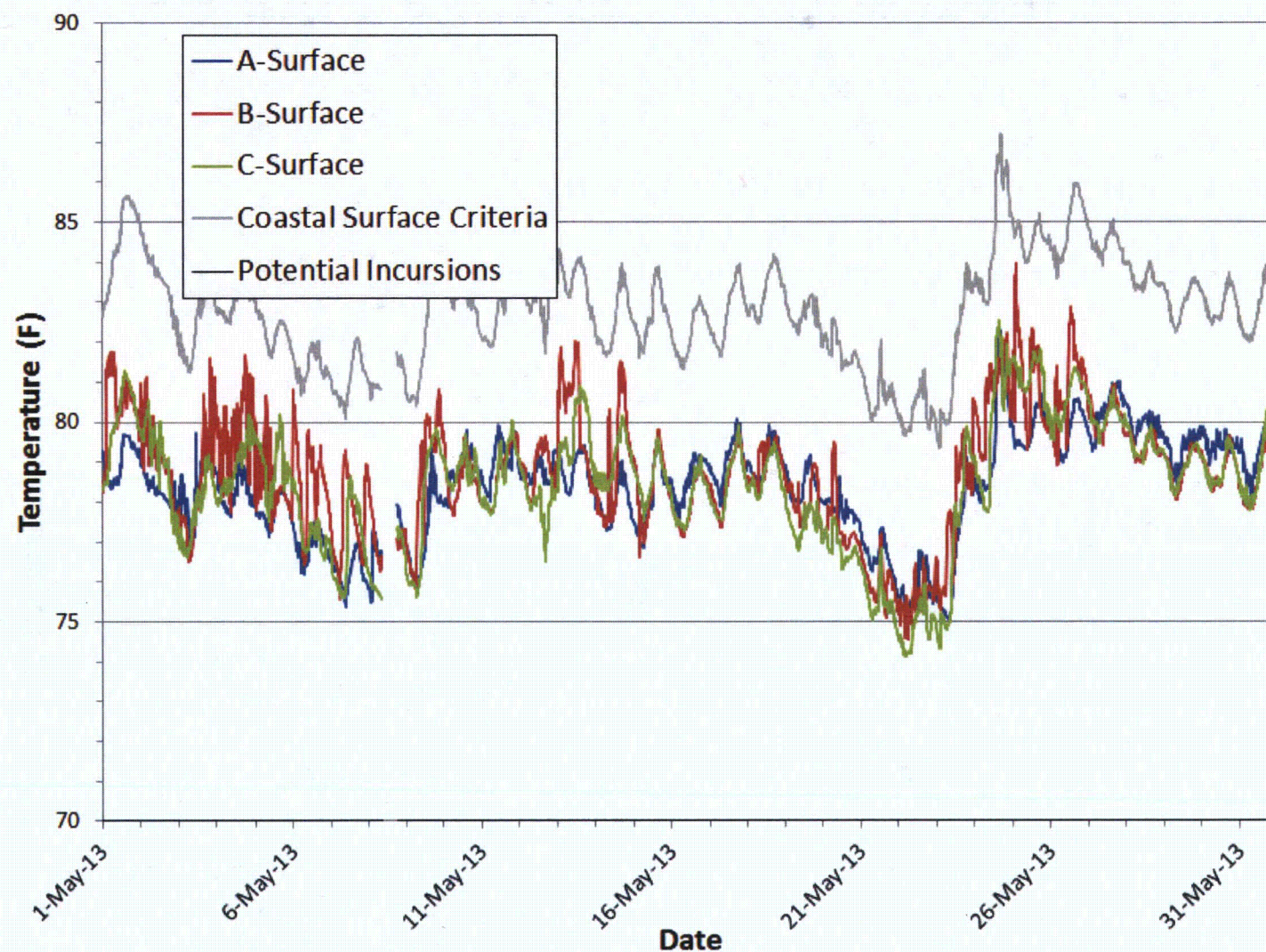


Attachment 1-3

Sea surface temperature at coastal stations (April 2013)

Stephen Larsen1-03_Cstl_4_13_rev.docx

Source: Golder, 2013.

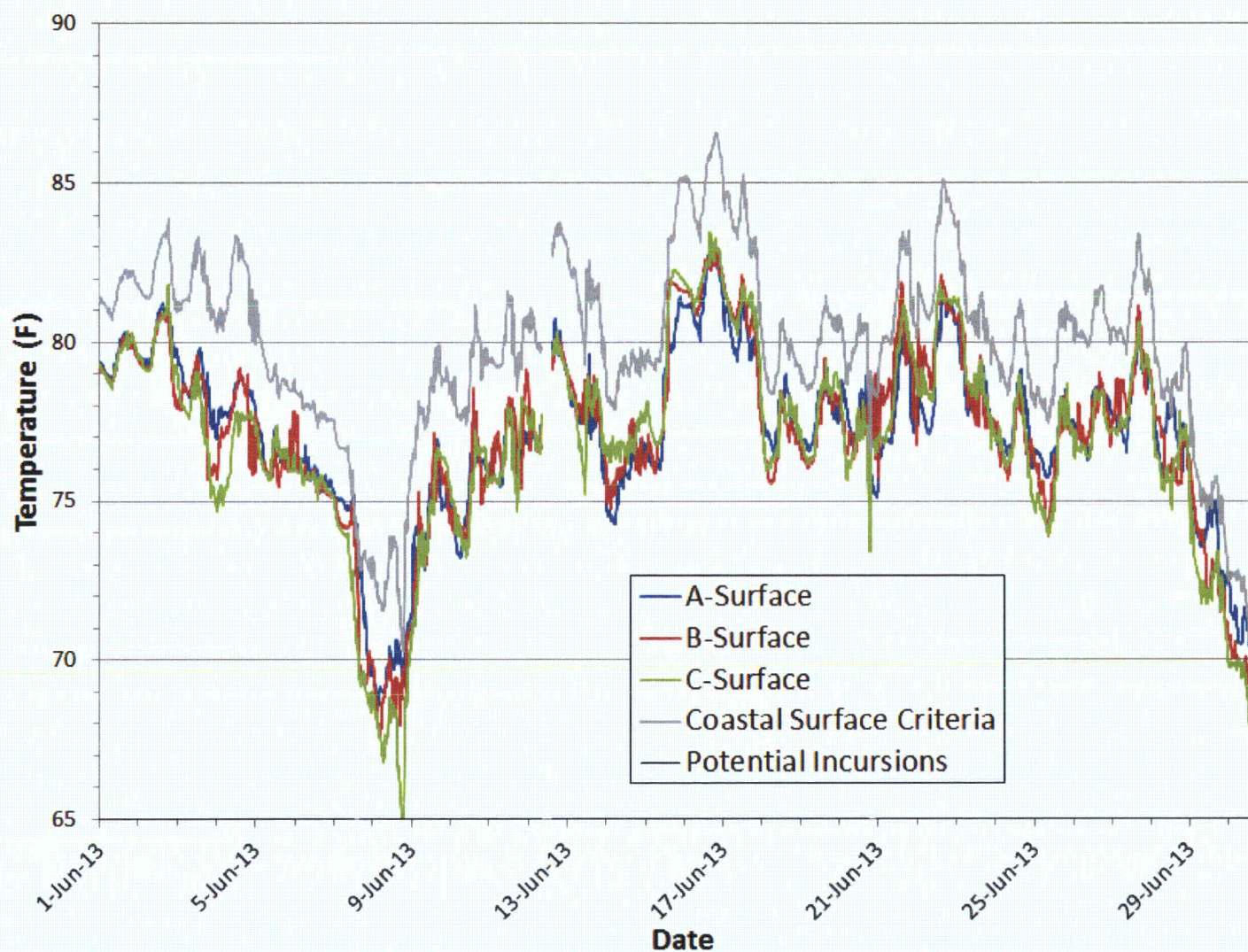


Attachment 1-4

Sea surface temperature at coastal stations (May 2013)

Stephen Larsen1-04_Cstl_5_13_rev.docx

Source: Golder, 2013.



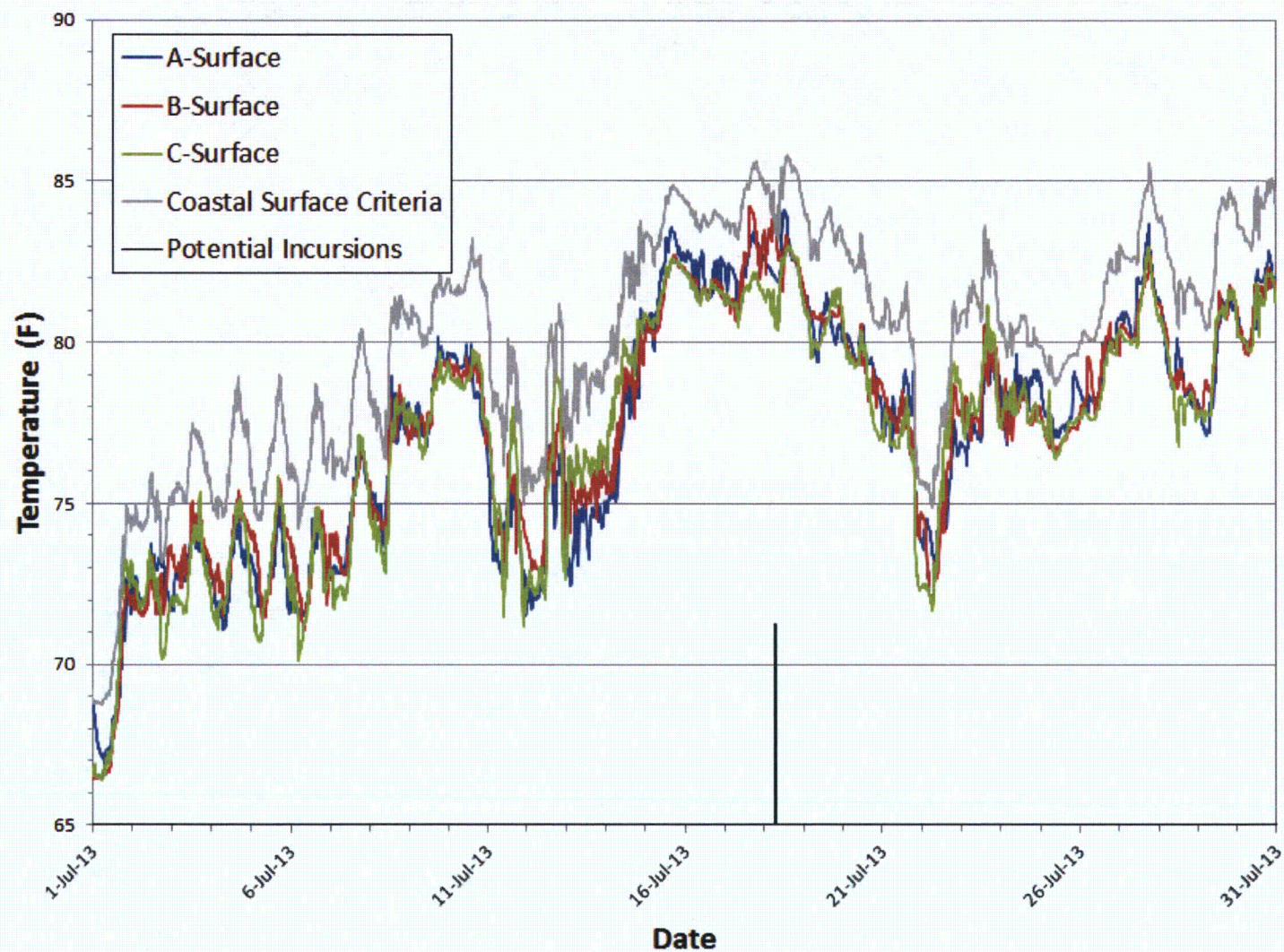
Attachment 1-5

Sea surface temperature at coastal stations (June 2013)

Stephen Larsen1-05_Cstl_6_13_rev.docx

Source: Golder, 2013.





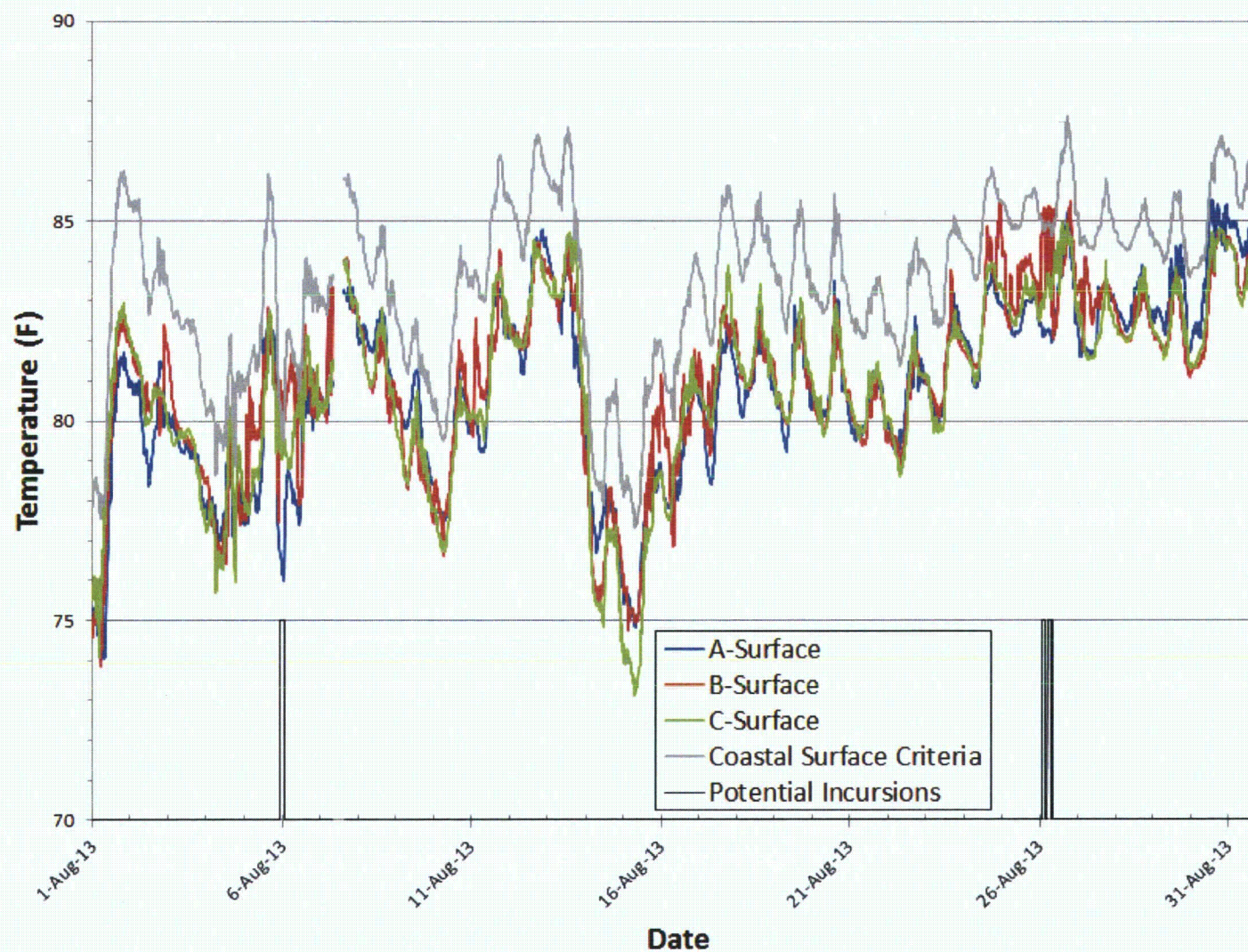
Attachment 1-6

Sea surface temperature at coastal stations (July 2013)

Stephen Larsen1-06_Cstl_7_13_rev.docx

Source: Golder, 2013.



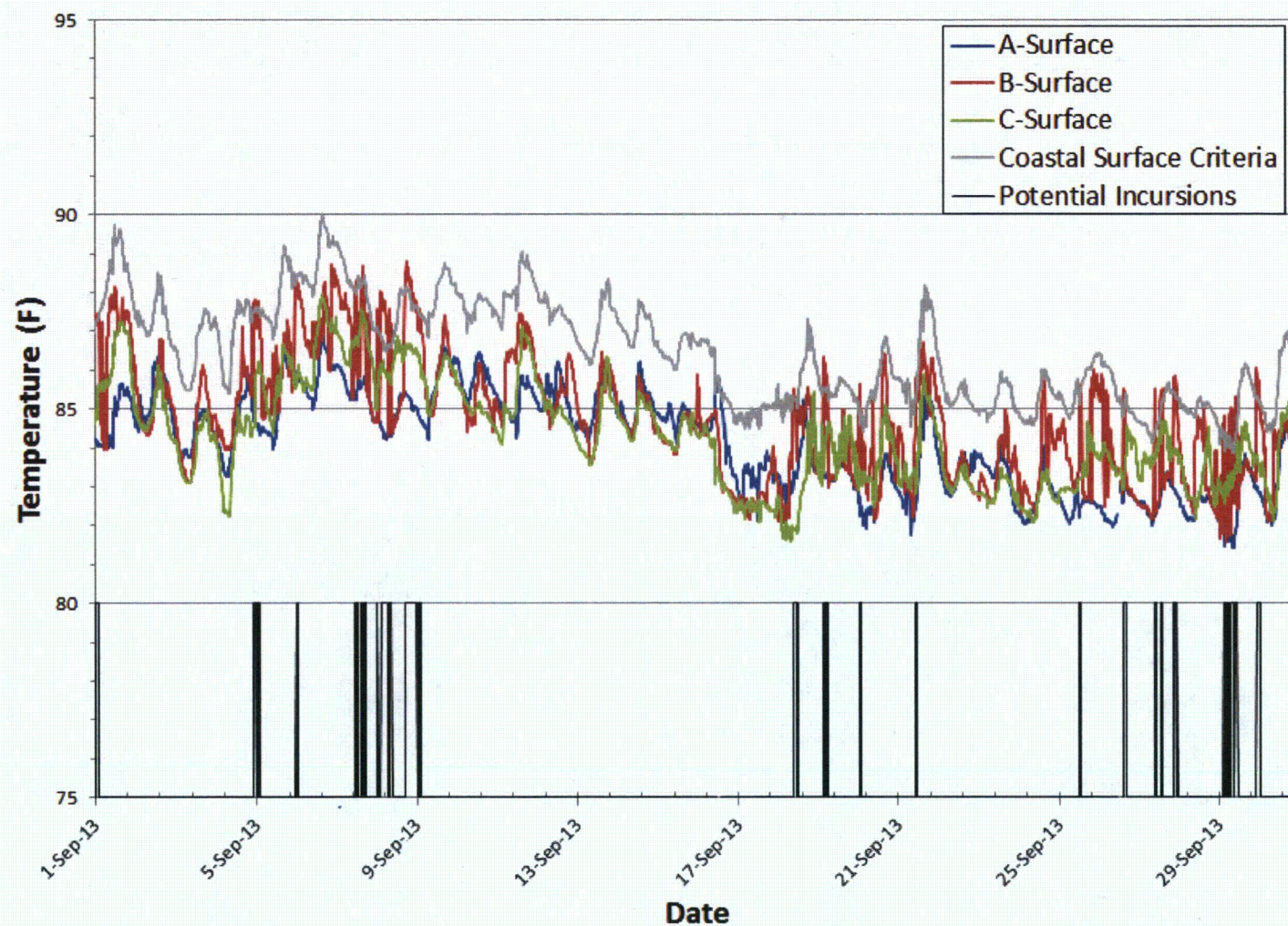


Attachment 1-7

Sea surface temperature at coastal stations (August 2013)

Stephen Larsen1-07_Cstl_8_13_rev.docx

Source: Golder, 2013.

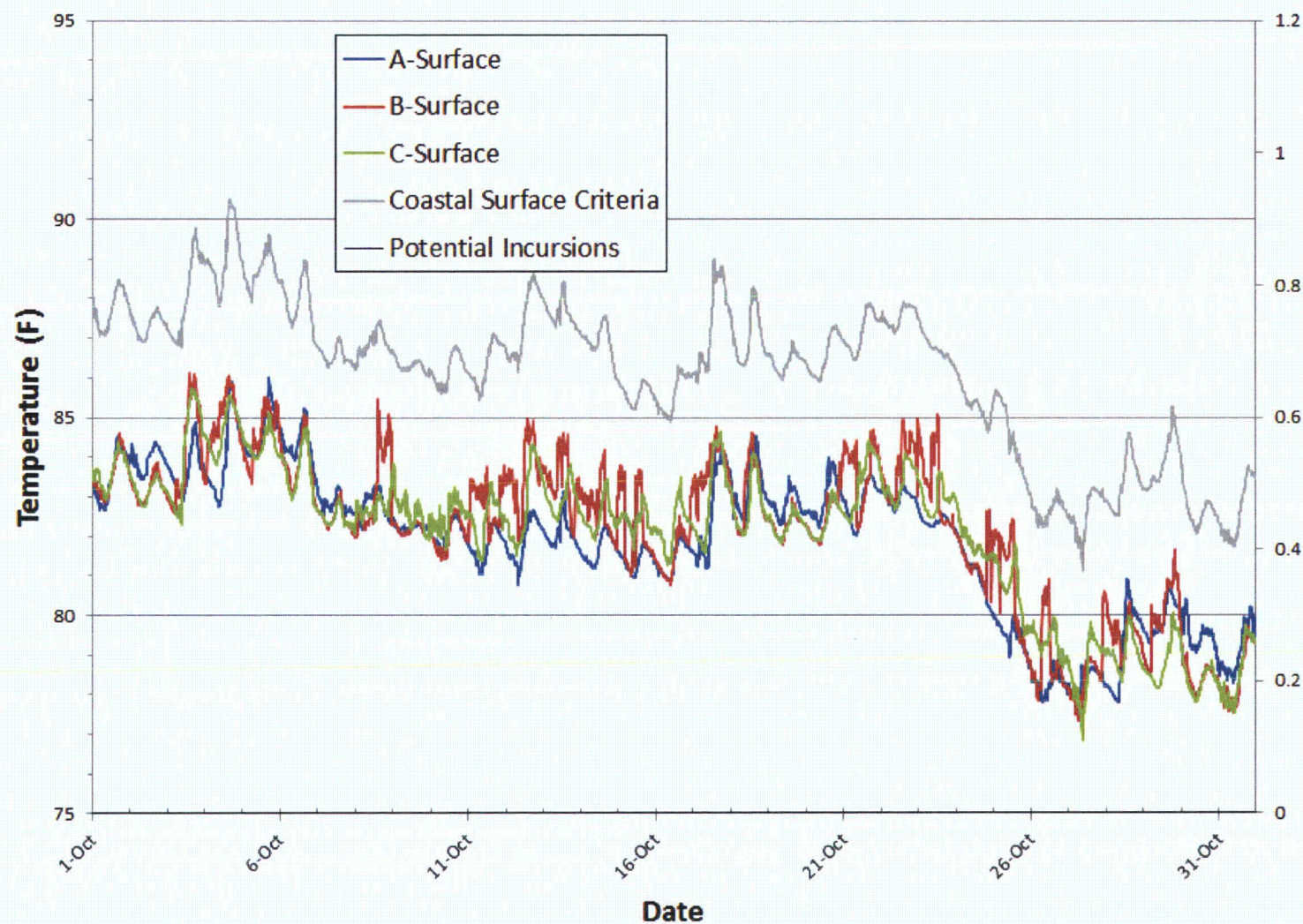


Attachment 1-8

Sea surface temperature at coastal stations (September 2013)

Stephen Larsen1-08_Cstl_9_13_rev.docx

Source: Golder, 2013.



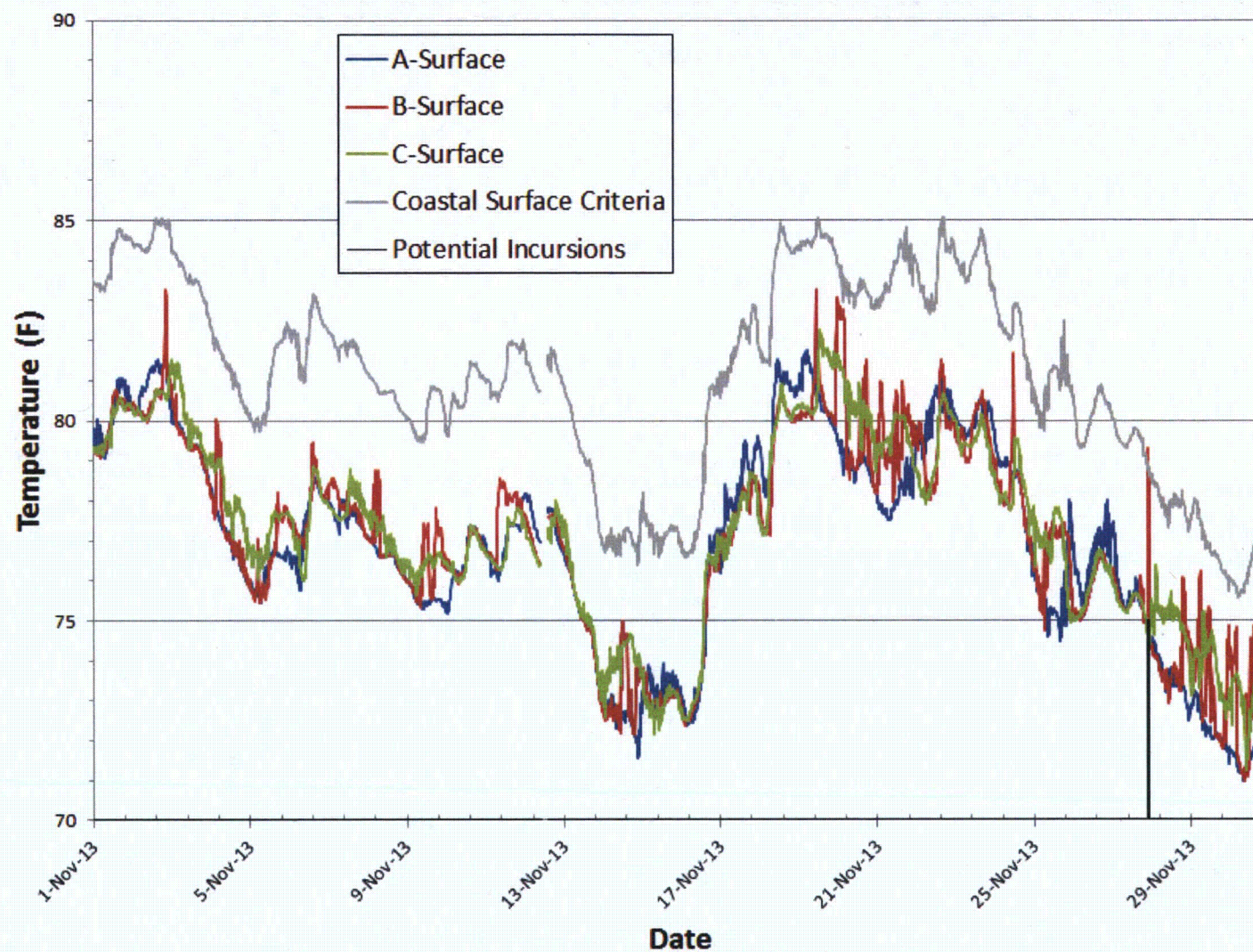
Attachment 1-9

Sea surface temperature at coastal stations (October 2013)

Stephen Larsen1-09_Cstl_10_13_rev.docx

Source: Golder, 2013.





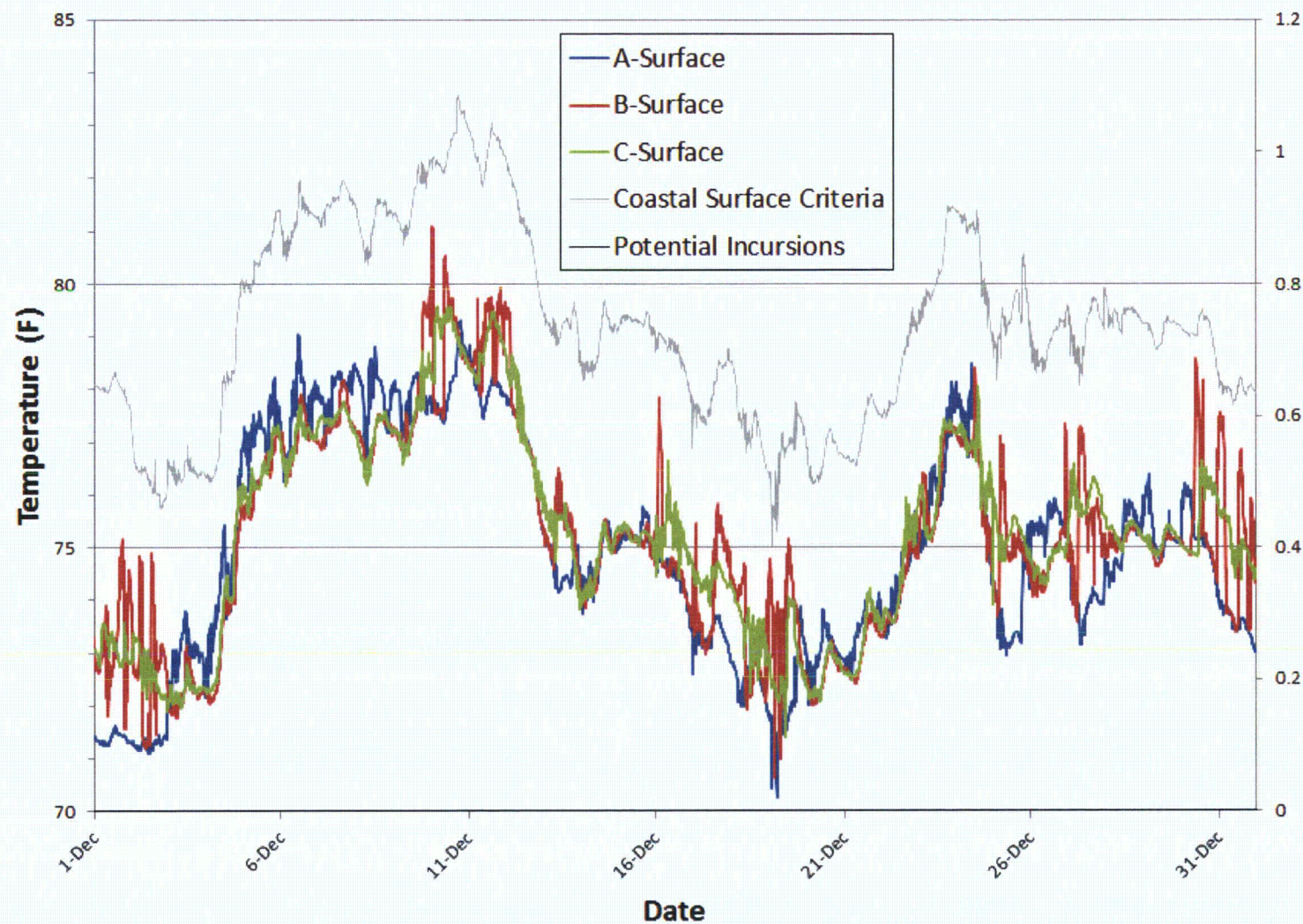
Attachment 1-10

Sea surface temperature at coastal stations (November 2013)

Stephen Larsen1-10_Cstl_11_13_rev.docx

Source: Golder, 2013.





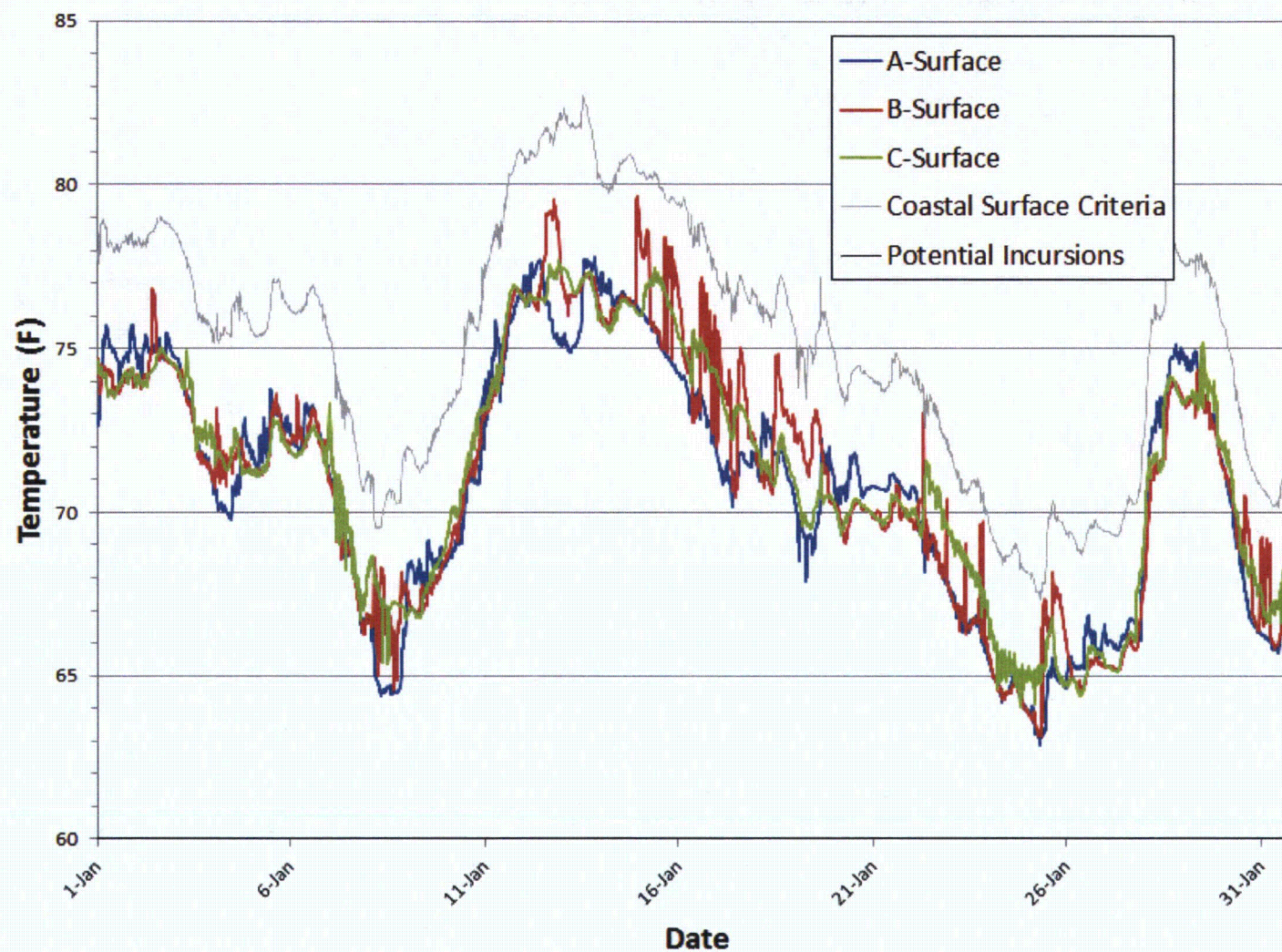
Attachment 1-11

Sea surface temperature at coastal stations (December 2013)

Stephen Larsen1-11_Cstl_12_13_rev.docx

Source: Golder, 2013.





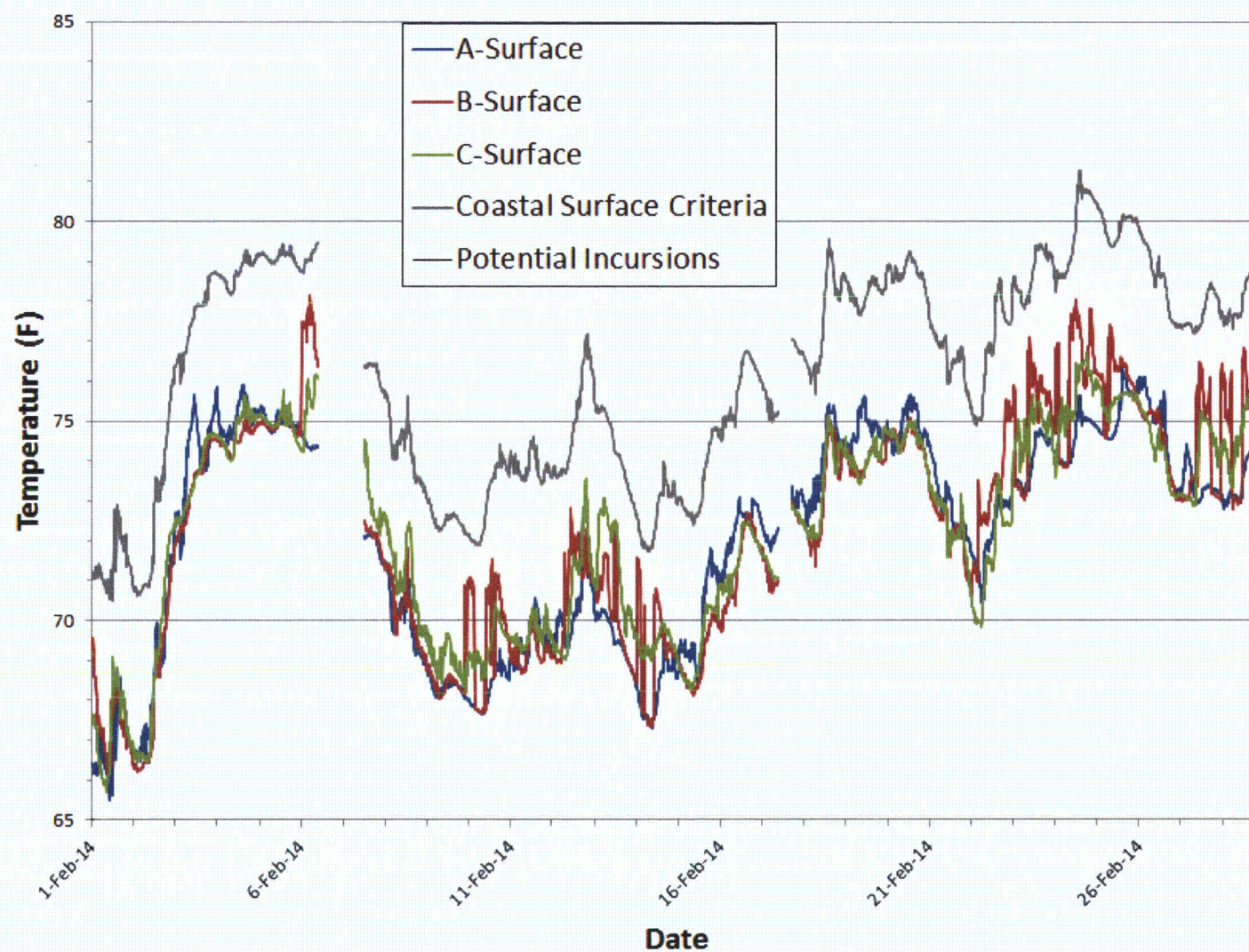
Attachment 1-12

Sea surface temperature at coastal stations (January 2014)

Stephen Larsen1-12_Cstl_1_14_rev.docx

Source: Golder, 2014.





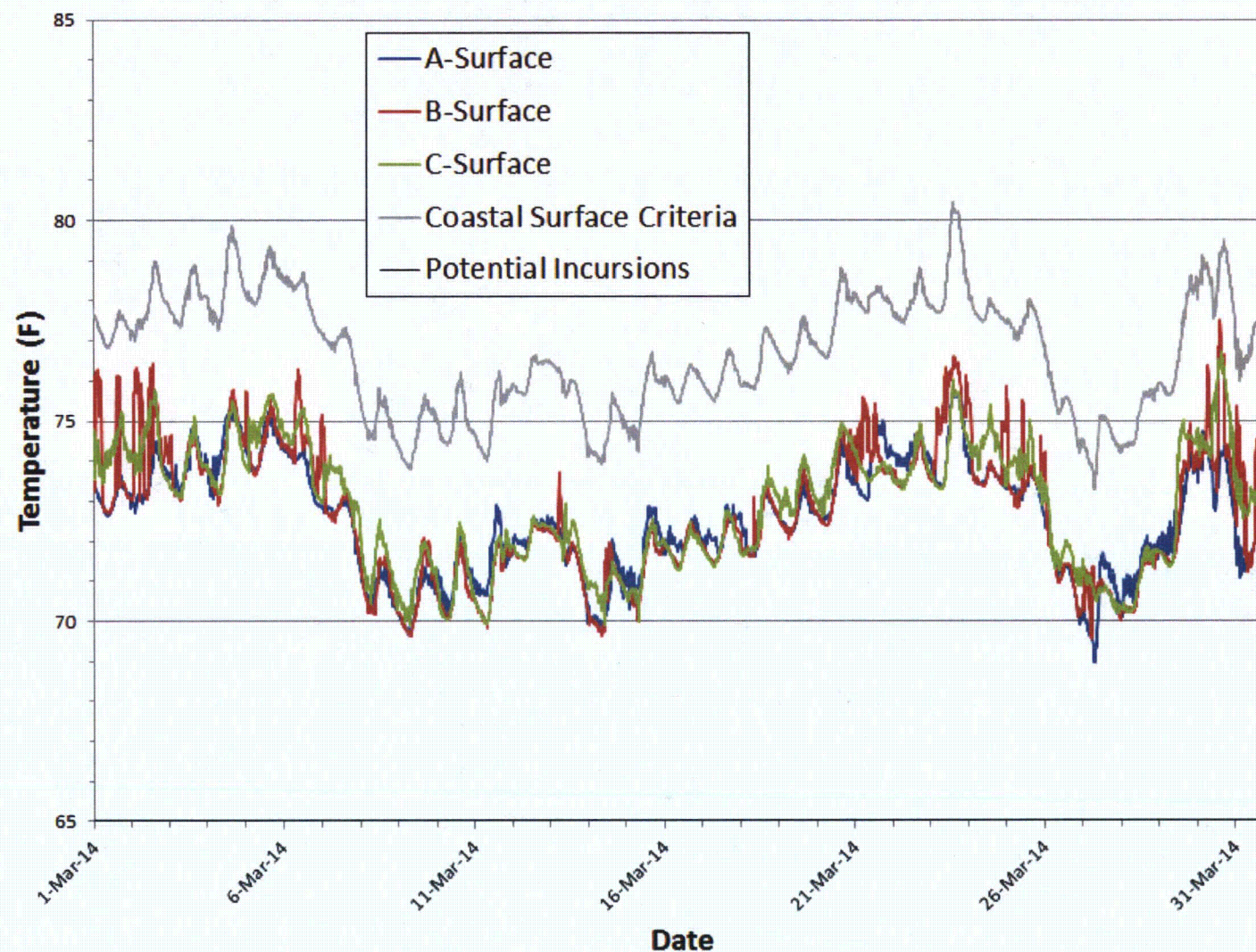
Attachment 1-13

Sea surface temperature at coastal stations (February 2014)

Stephen Larsen1-13_Cstl_2_14_rev.docx

Source: Golder, 2014.





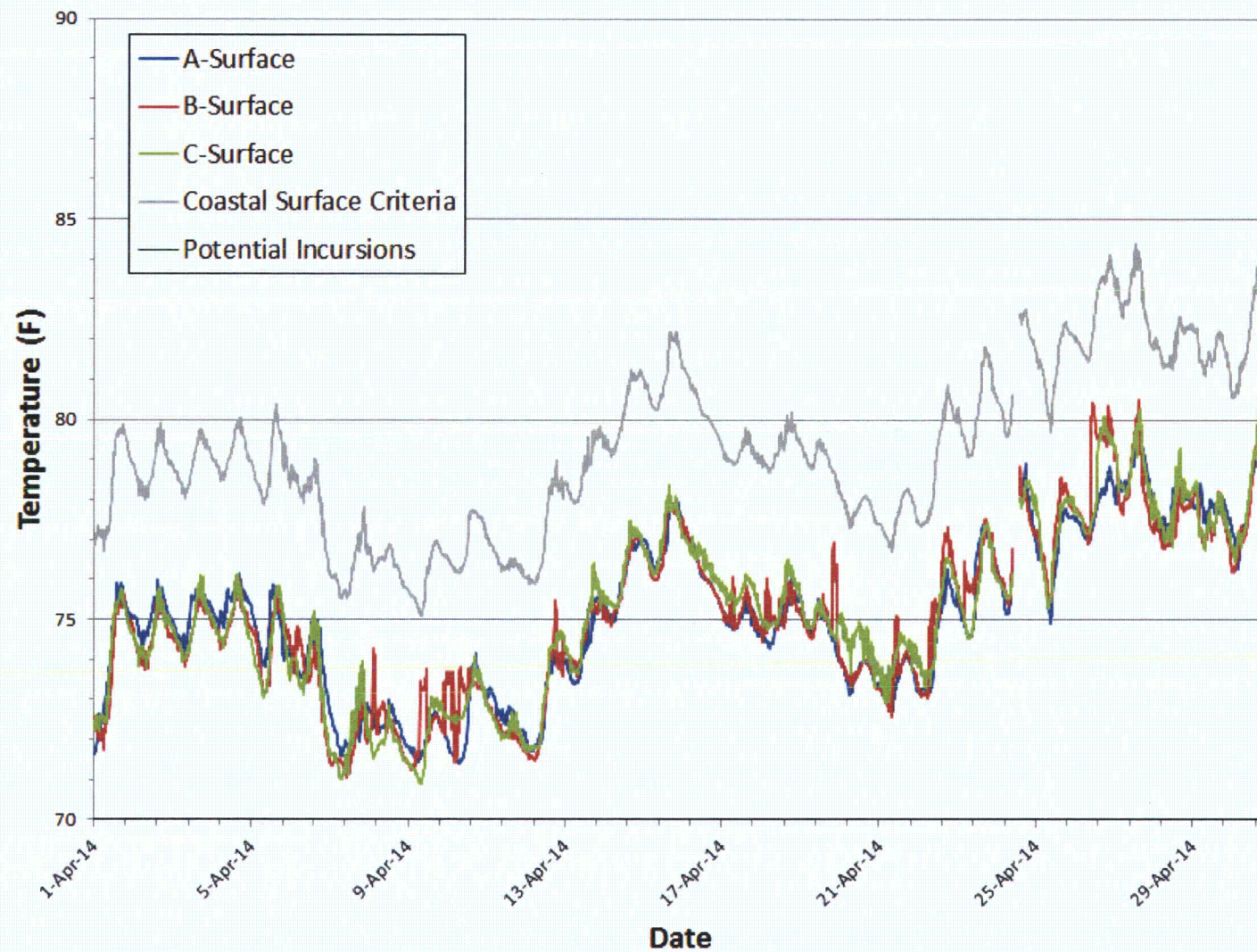
Attachment 1-14

Sea surface temperature at coastal stations (March 2014)

Stephen Larsen1-14_Cstl_3_14_rev.docx

Source: Golder, 2014.



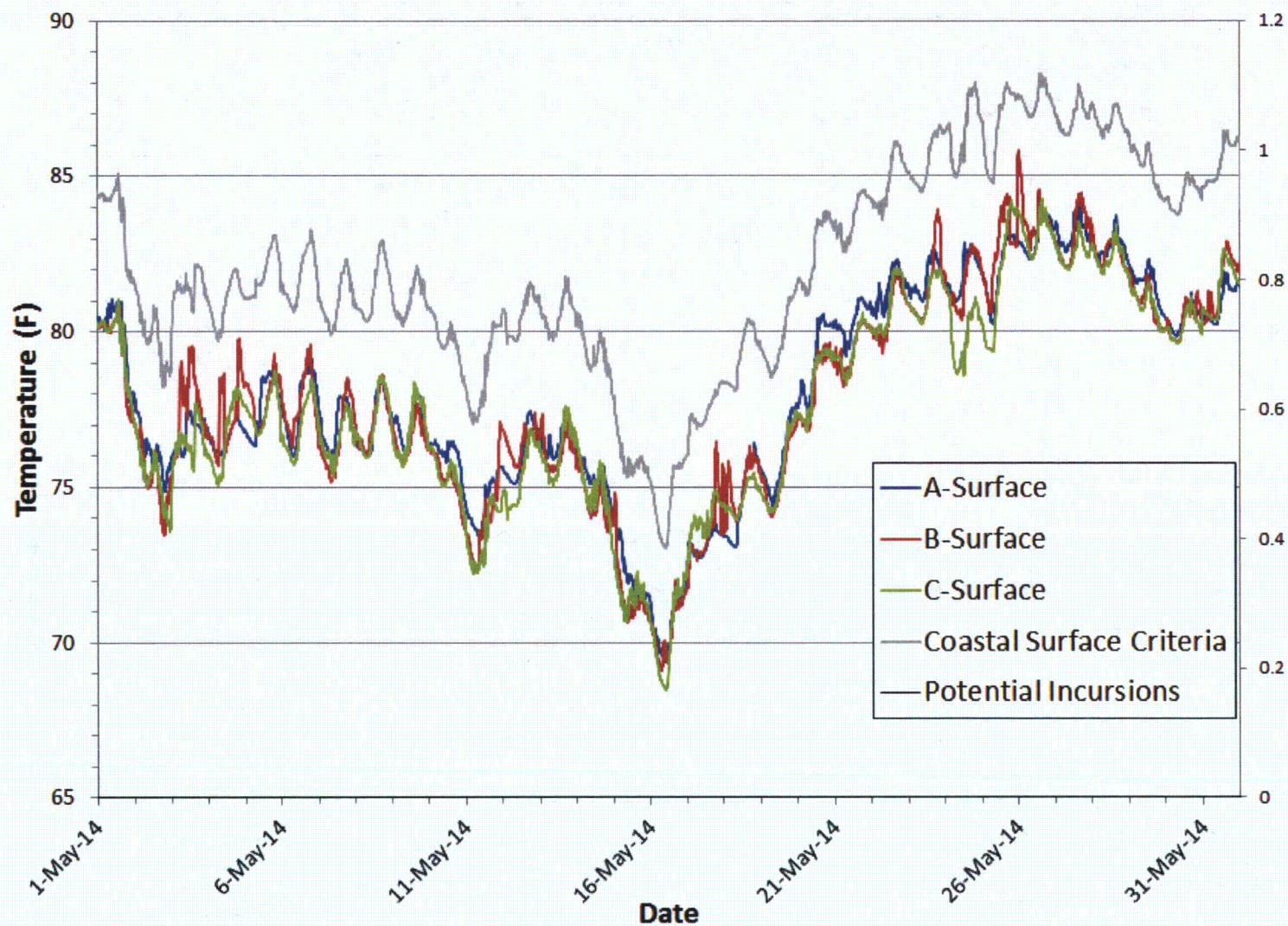


Attachment 1-15

Sea surface temperature at coastal stations (April 2014)

Stephen Larsen1-15_Cstl_4_14_rev.docx

Source: Golder, 2014.



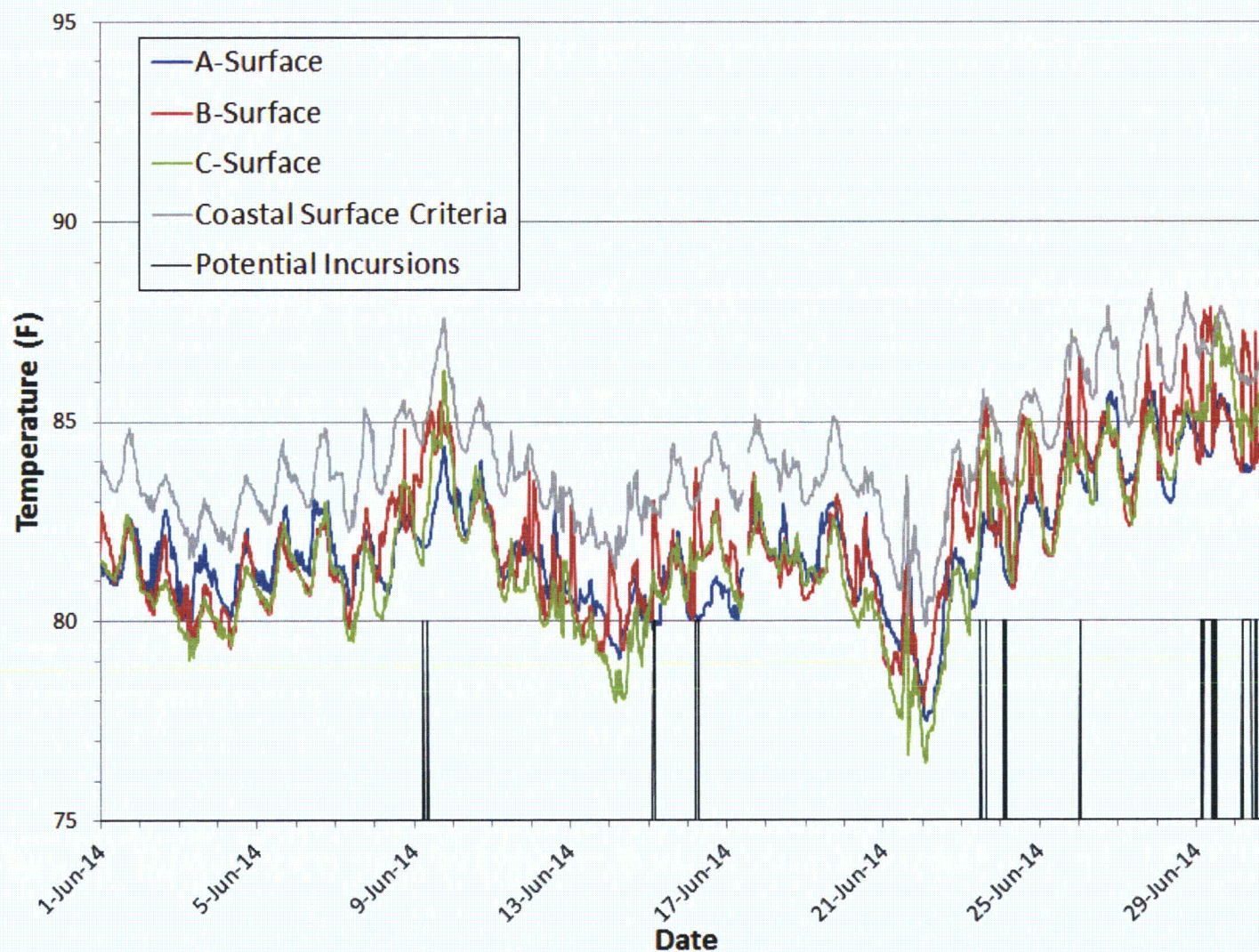
Attachment 1-16

Sea surface temperature at coastal stations (May 2014)

Stephen Larsen1-16_Cstl_5_14_rev.docx

Source: Golder, 2014.





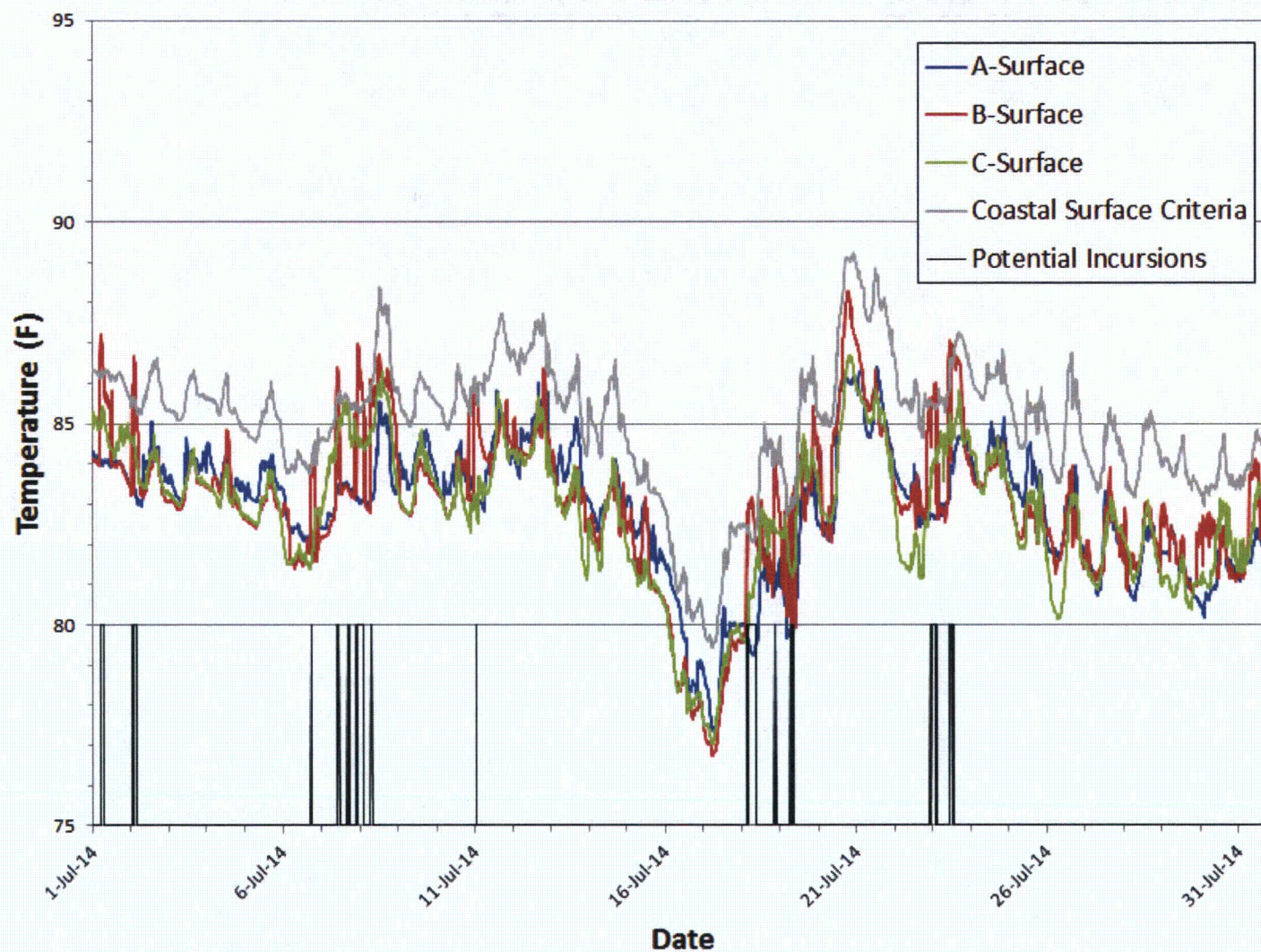
Attachment 1-17

Sea surface temperature at coastal stations (June 2014)

Stephen Larsen1-17_Cstl_6_14_rev.docx

Source: Golder, 2014.



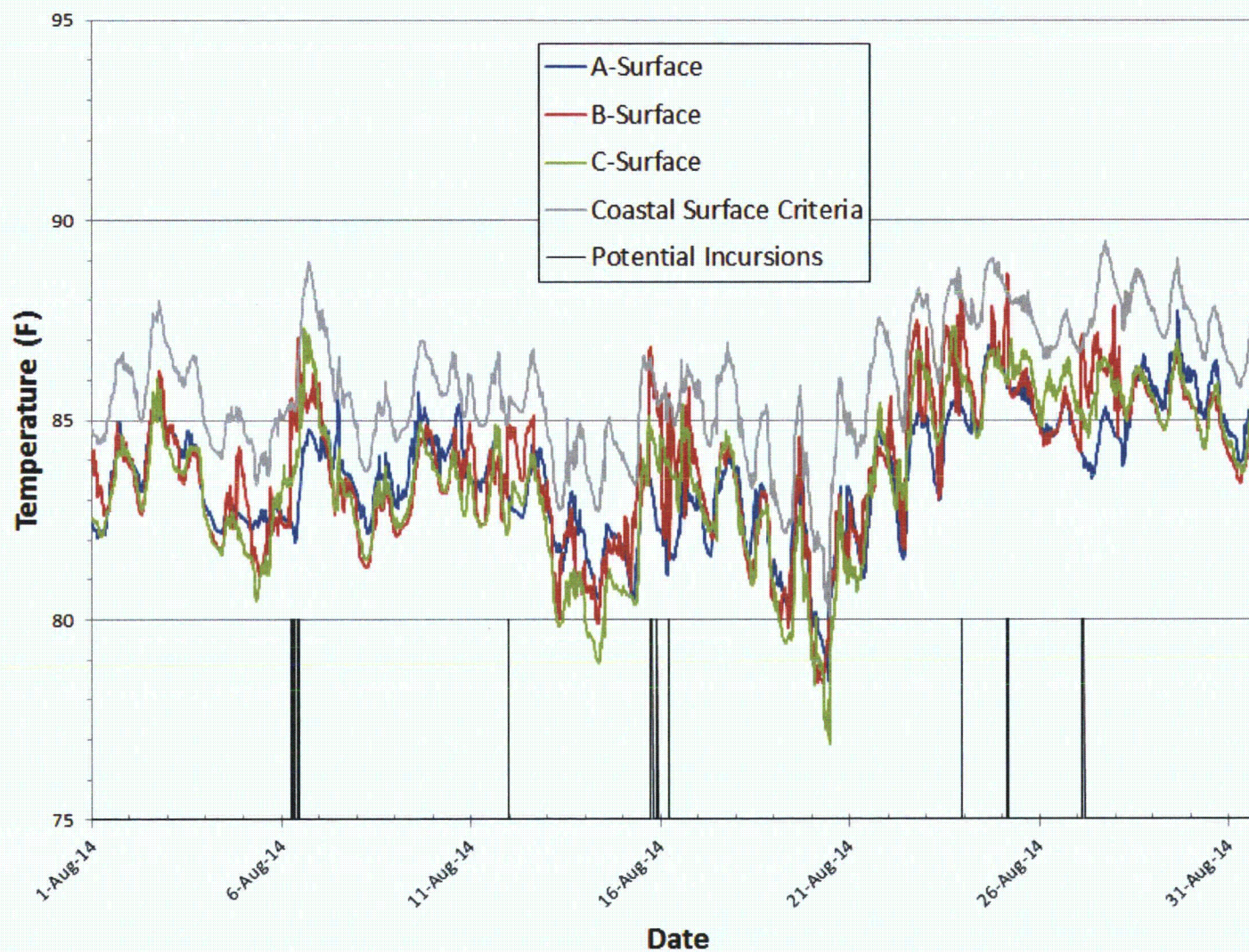


Attachment 1-18

Sea surface temperature at coastal stations (July 2014)

Stephen Larsen1-18_Cstl_7_14_rev.docx

Source: Golder, 2014.

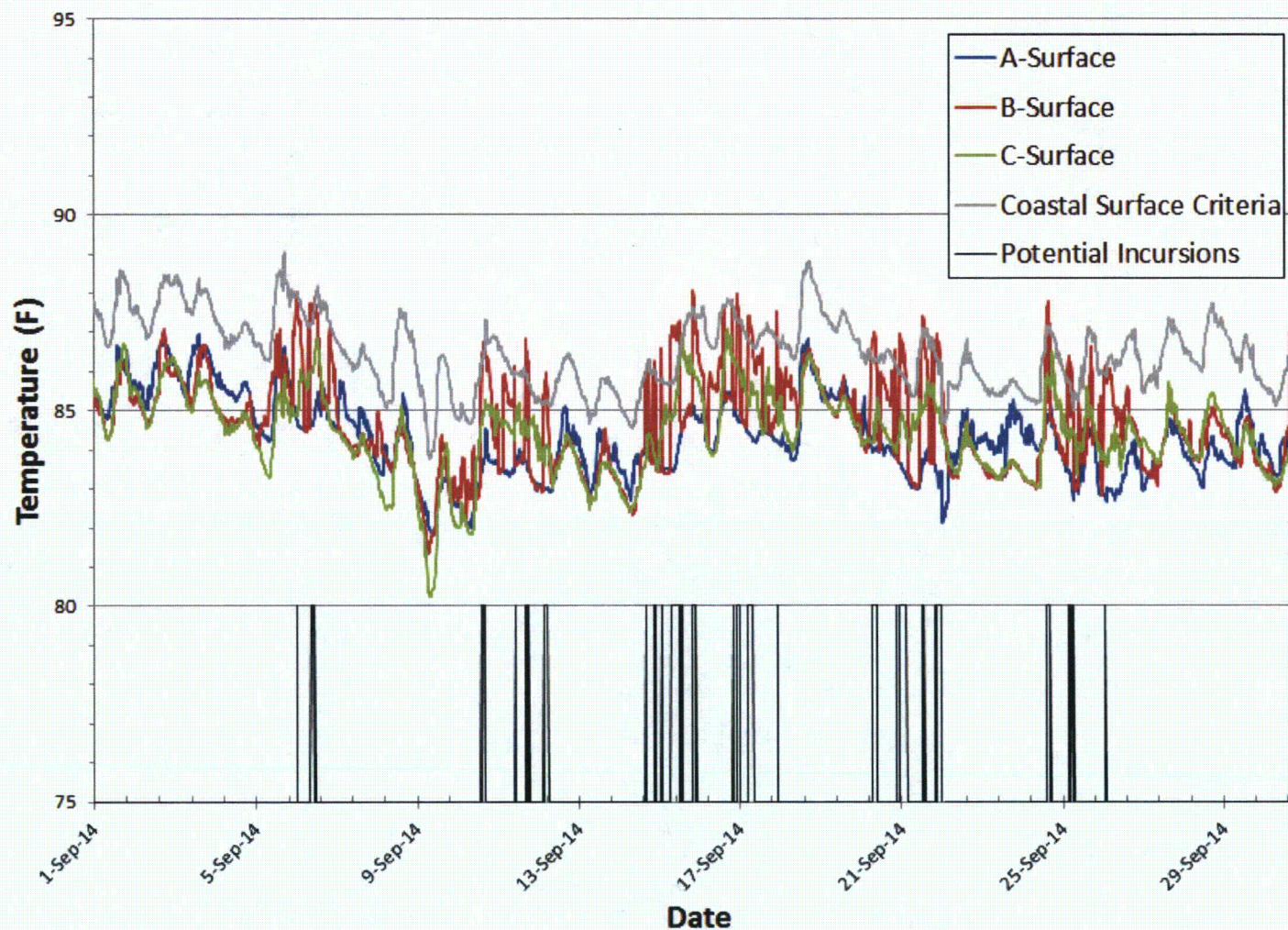


Attachment 1-19

Sea surface temperature at coastal stations (August 2014)

Stephen Larsen1-19_Cstl_8_14_rev.docx

Source: Golder, 2014.



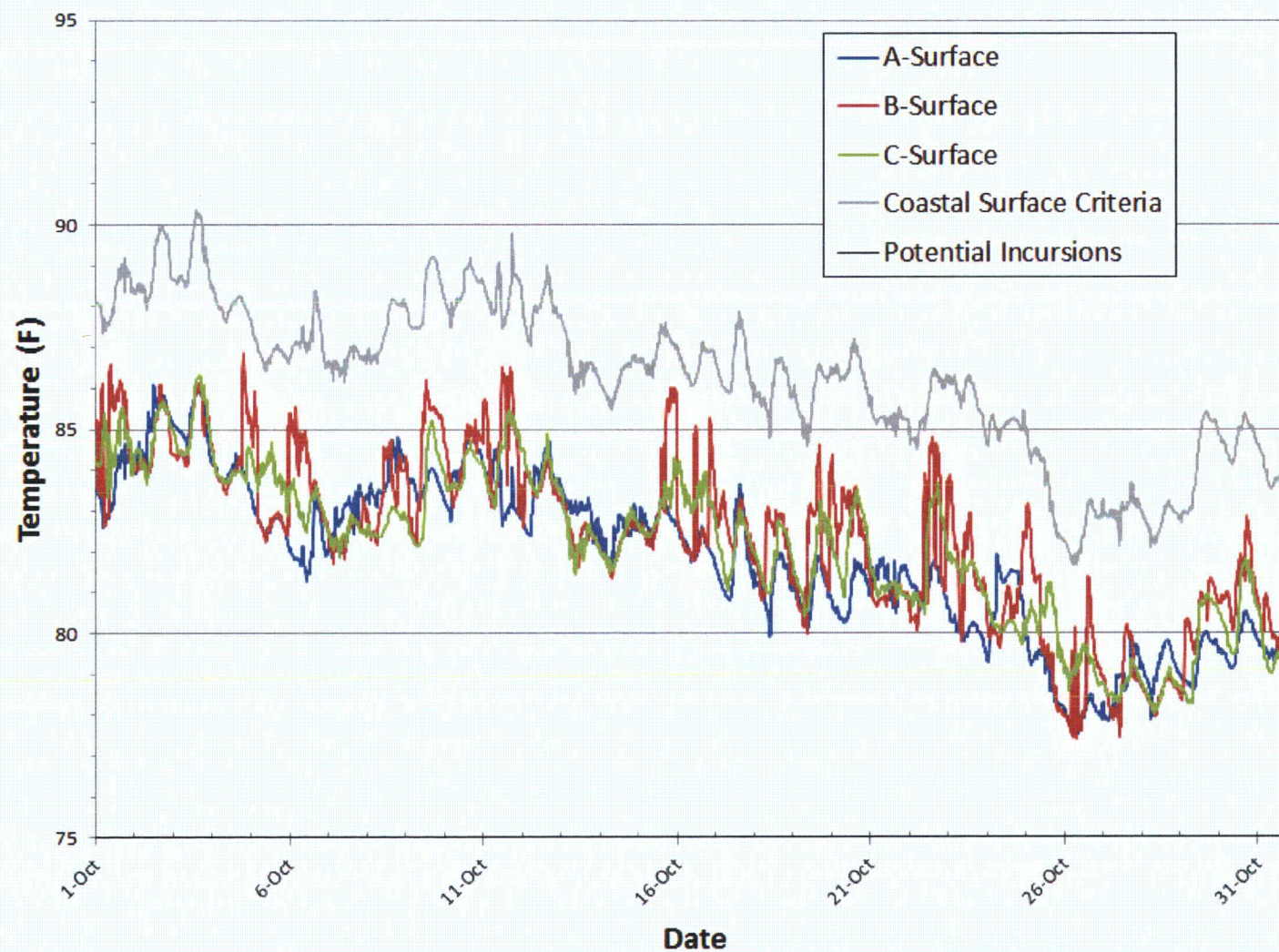
Attachment 1-20

Sea surface temperature at coastal stations (September 2014)

Stephen Larsen1-20_Cstl_9_14_rev.docx

Source: Golder, 2014.





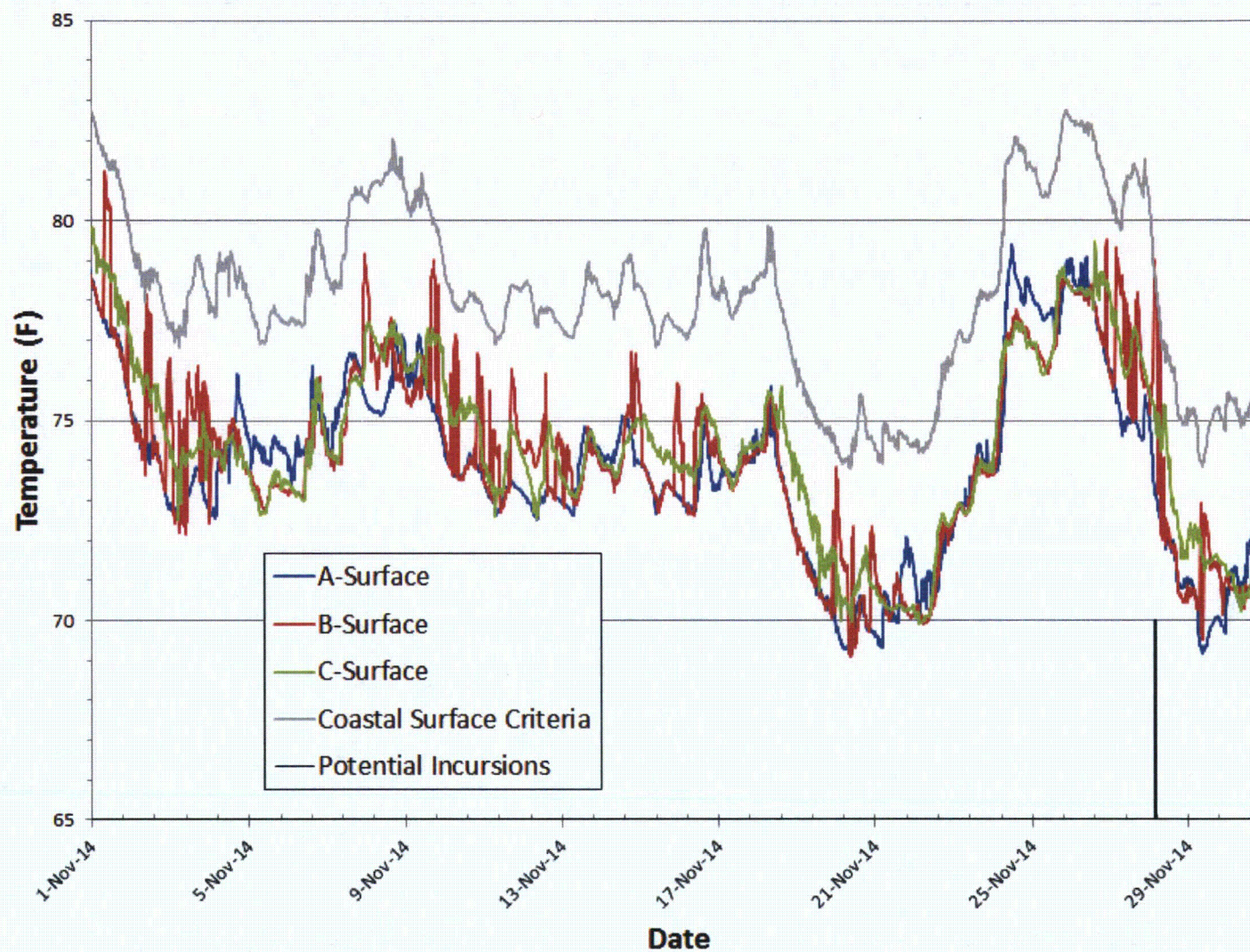
Attachment 1-21

Sea surface temperature at coastal stations (October 2014)

Stephen Larsen1-21_Cstl_10_14_rev.docx

Source: Golder, 2014.



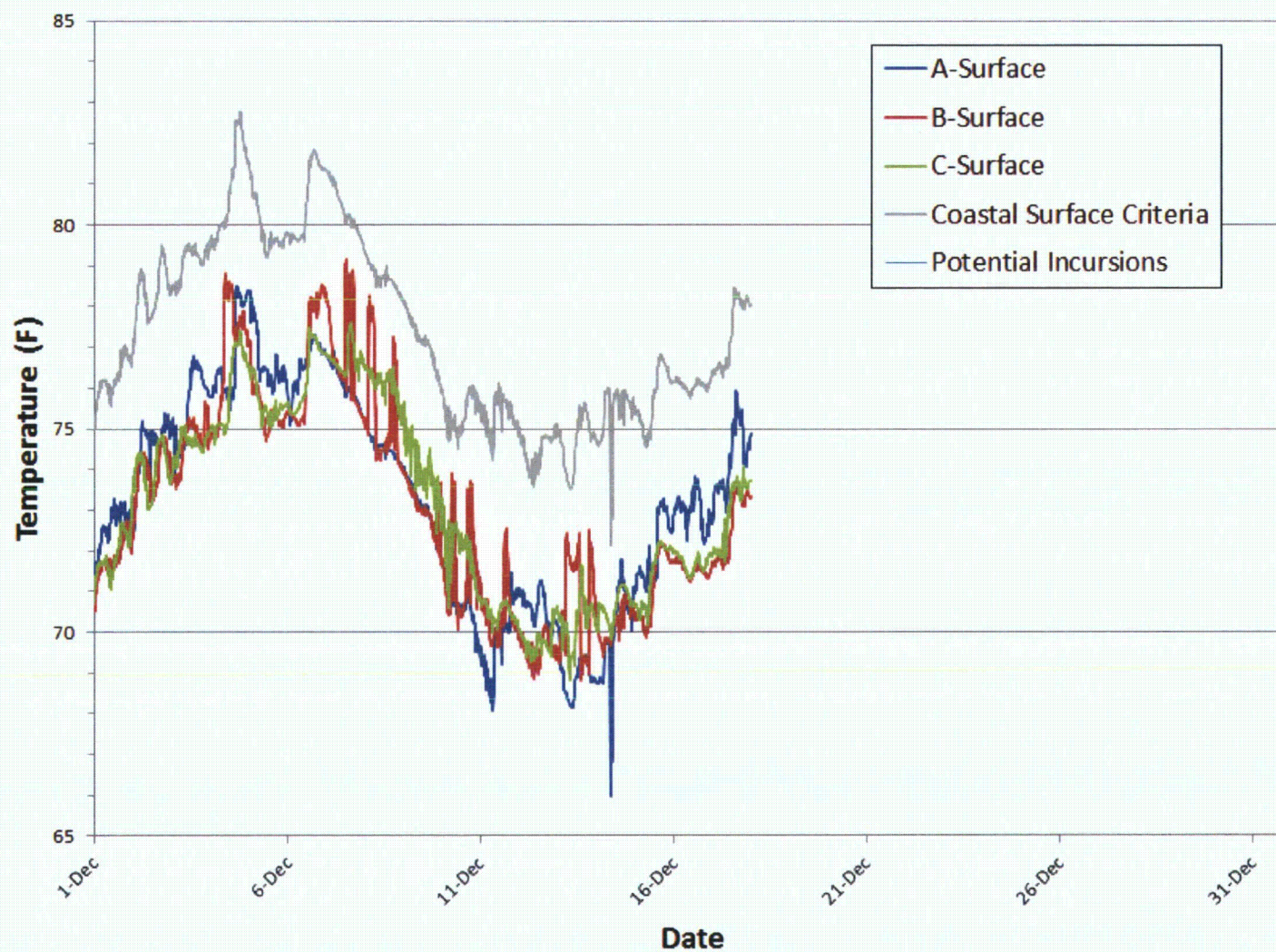


Attachment 1-22

Sea surface temperature at coastal stations (November 2014)

Stephen Larsen1-22_Cstl_11_14_rev.docx

Source: Golder, 2014.



Attachment 1-23

Sea surface temperature at coastal stations (December 2014)

Stephen Larsen1-23_Cstl_12_14_rev.docx

Source: Golder, 2014.