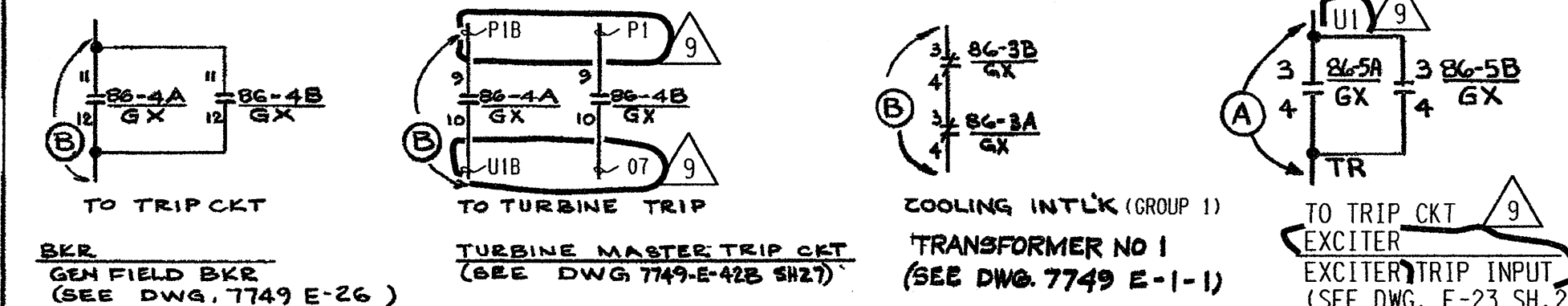
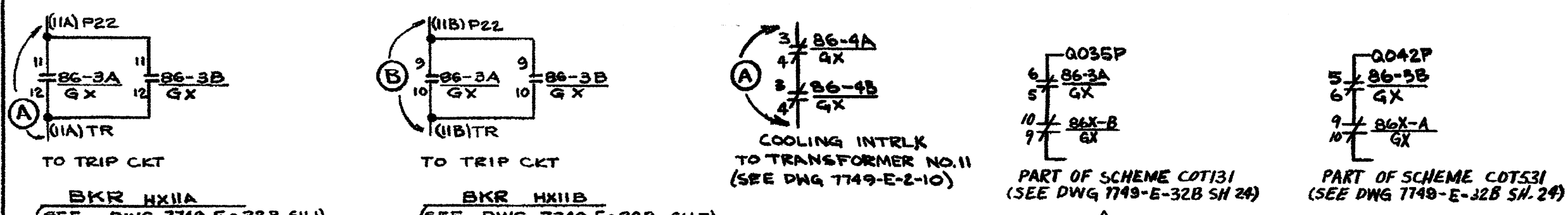
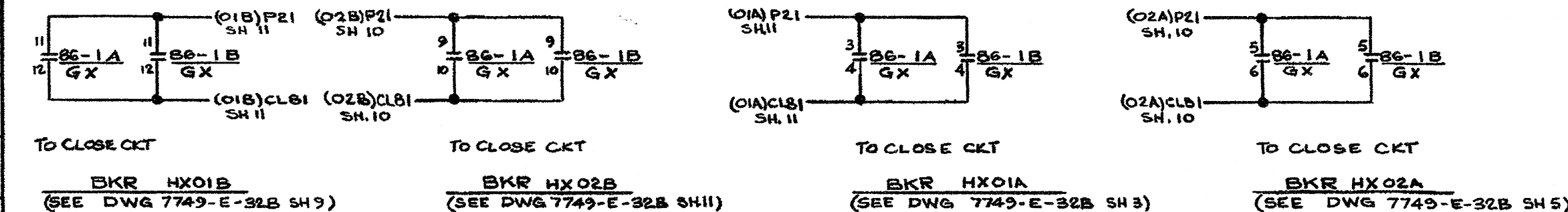
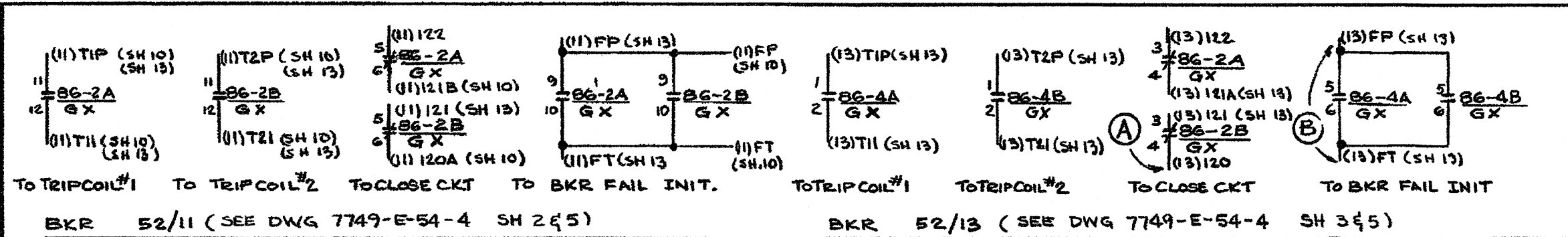


9	INC. DUN 05-0140-004-185 REV.01 & 12-0134-001-003 REV.00	DATE	6/14/94	DR	5-7-12	CHK	INITIALS ON FILE	PROJ	OWNER
8	INC. DUN 05-0255-001-008 REV.00 & GEN. UPDATE DO NOT INCLUDE "7749" TO ADDED INFOR. PER GEN. DRFTG. PRACTICE. (REDRAWN)	DATE	5-7-12	DR	5-7-12	CHK	INITIALS ON FILE	PROJ	OWNER
3	REVISED AS NOTED ISSUED FOR CONSTRUCTION	DATE	8/19/94	DR	8/19/94	CHK	INITIALS ON FILE	PROJ	OWNER
REV	DESCRIPTION	DATE		DR		CHK		PROJ	OWNER



# RELAY CONTACT ASSIGNMENTS FOR (SH-3) AND (SH-8) TRIPPING AND LOCK-OUT RELAY CKTS

DAVIS-BESSE NUCLEAR POWER STATION			
THE TOLEDO EDISON COMPANY			
THE CLEVELAND ELECTRIC ILLUMINATING COMPANY			
ELEMENTARY WIRING DIAGRAMS			
GENERATOR AND TRANSFORMER PROTECTION			
TRIPPING AND LOCK-OUT RELAY CKTS			
BECHTEL COMPANY	JOB NO	DRAWING NO	REV
	7749	E-31B SH-12	9

- NOTES
- FOR GENERAL NOTES & LOCATION DESIGNATIONS SEE DRAWING INDEX E-31B
  - (A) INDICATES PANEL C5750A FOR TERMINATION OF OUTGOING WIRES
  - (B) INDICATES PANEL C5750B FOR TERMINATION OF OUTGOING WIRES

THIS DRAWING HAS BEEN REDRAWN/SCANNED ON CAD AND SUPERSEDES REV. 7.