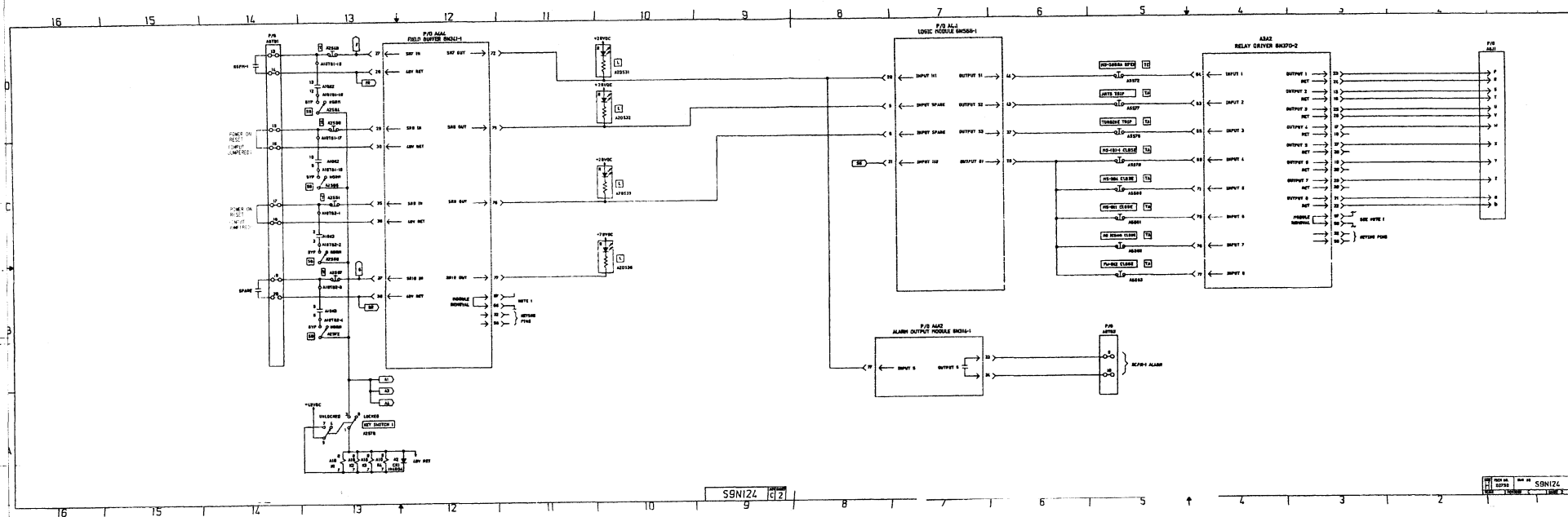


- DFN=1/ELEC/E30A06SH1.DGN/7.1P

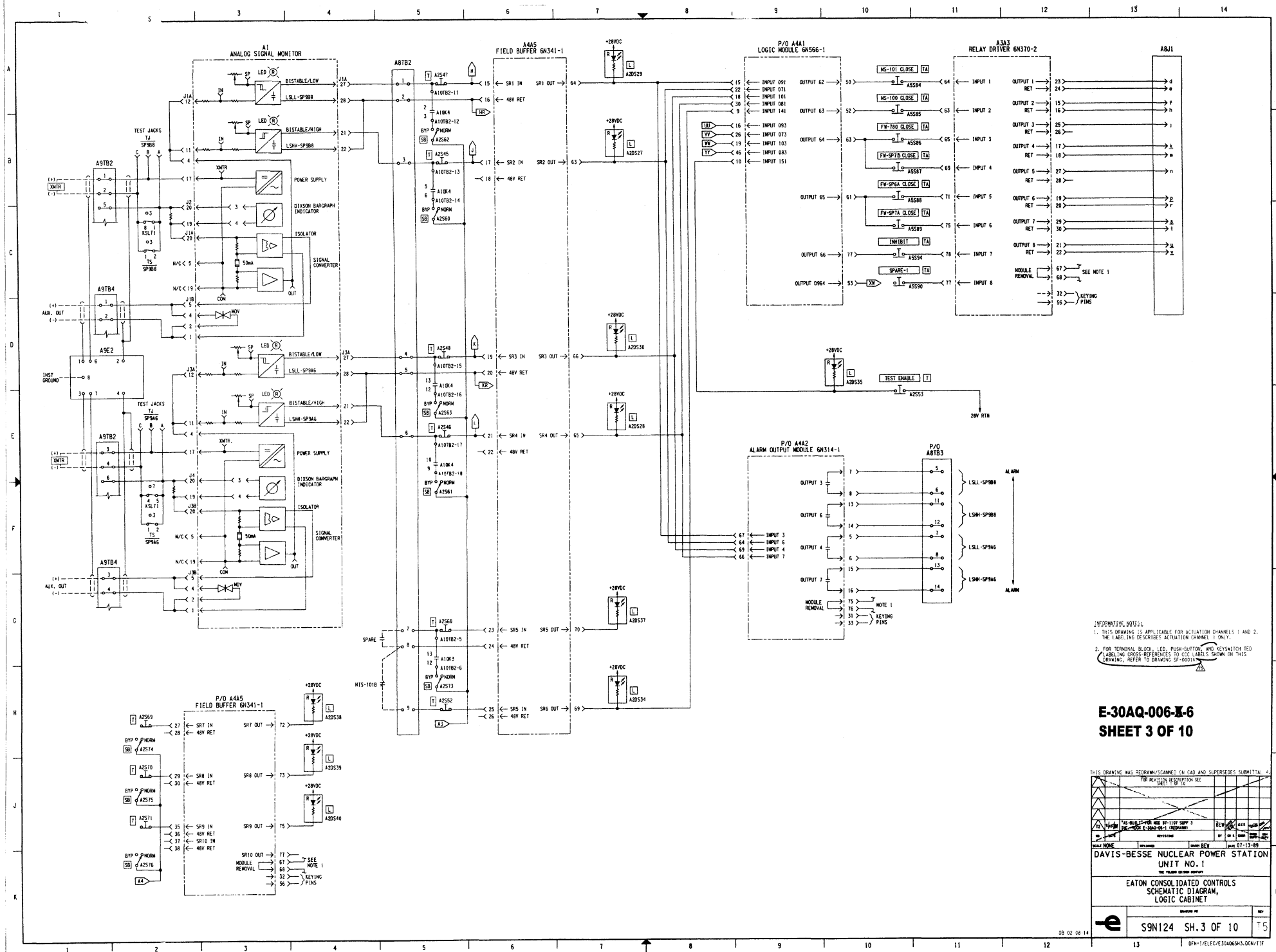


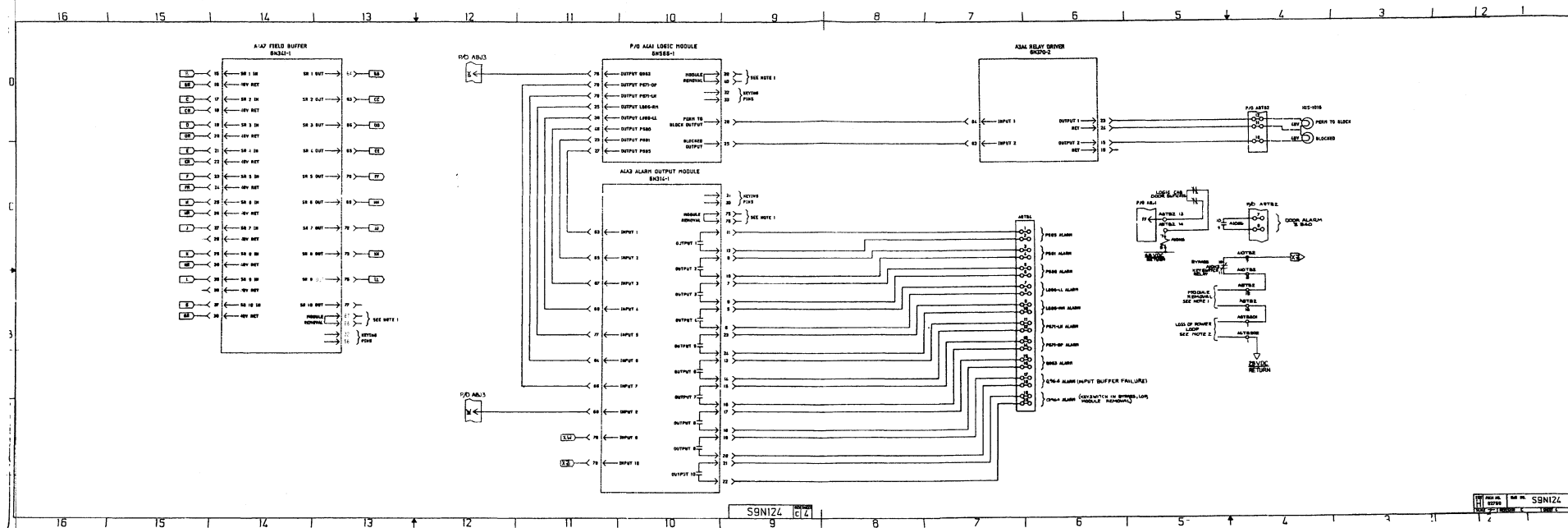
1. THIS DRAWING IS APPLICABLE FOR ACTUATION CHANNELS 1 AND 2. THE LABELING DESCRIBES ACTUATION CHANNEL 1 ONLY.
2. FOR TERMINAL BLOCK, LED, PUSH-BUTTON, AND KEYSWITCH TIED LABELING CROSS-REFERENCES TO DEC LABELS SHOWN IN THIS DRAWING, REFER TO DRAWING SF-00014.

THIS DRAWING WAS REDRAWN/SCANNED ON CAD AND SUPERSEDES SUBMITTAL 4.
FOR REVISION DESCRIPTION SEE SHEET 1 OF 10

REV	DATE	BY	CHKD	APPD	DESCRIPTION
T1	10/11/81	SWT'S 3, 4, 5, 6, 7, 8, 9, 10, 11, 12, 13, 14, 15, 16, 17, 18, 19, 20, 21, 22, 23, 24, 25, 26, 27, 28, 29, 30, 31, 32, 33, 34, 35, 36, 37, 38, 39, 40, 41, 42, 43, 44, 45, 46, 47, 48, 49, 50, 51, 52, 53, 54, 55, 56, 57, 58, 59, 60, 61, 62, 63, 64, 65, 66, 67, 68, 69, 70, 71, 72, 73, 74, 75, 76, 77, 78, 79, 80, 81, 82, 83, 84, 85, 86, 87, 88, 89, 90, 91, 92, 93, 94, 95, 96, 97, 98, 99, 100			REVISED ONLY
T2	10/11/81	SWT'S 3, 4, 5, 6, 7, 8, 9, 10, 11, 12, 13, 14, 15, 16, 17, 18, 19, 20, 21, 22, 23, 24, 25, 26, 27, 28, 29, 30, 31, 32, 33, 34, 35, 36, 37, 38, 39, 40, 41, 42, 43, 44, 45, 46, 47, 48, 49, 50, 51, 52, 53, 54, 55, 56, 57, 58, 59, 60, 61, 62, 63, 64, 65, 66, 67, 68, 69, 70, 71, 72, 73, 74, 75, 76, 77, 78, 79, 80, 81, 82, 83, 84, 85, 86, 87, 88, 89, 90, 91, 92, 93, 94, 95, 96, 97, 98, 99, 100			REVISED ONLY

E-30AQ-006-X-6
SHEET 2 OF 10





INFORMATIONAL NOTES:
 1. THIS DRAWING IS APPLICABLE FOR ACTUATION CHANNELS 1 AND 2.
 2. THE LABELING DESCRIBES ACTUATION CHANNEL 1 ONLY.
 3. FOR TERMINAL BLOCK, LED, PUSH-BUTTON, AND KEYSWITCH, THE LABELING CROSS-REFERENCED TO CCC LABELS SHOWN ON THIS DRAWING. REFER TO DRAWING OF 000114.

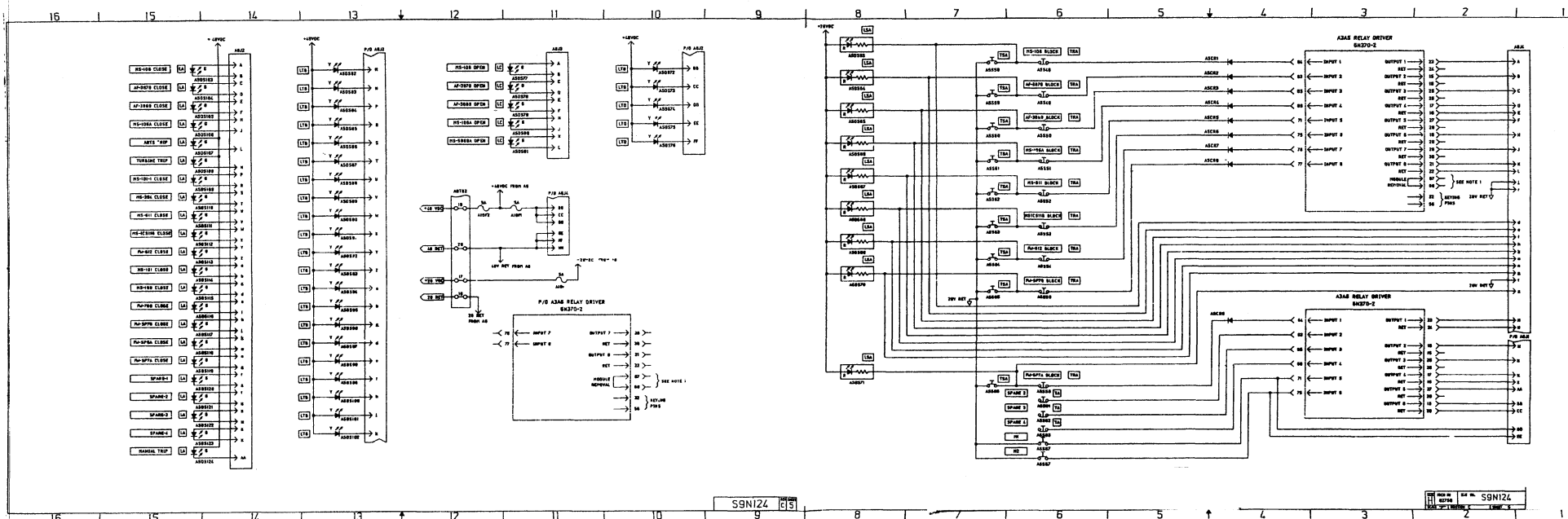
E-30AQ-006-X-6
SHEET 4 OF 10

THIS DRAWING WAS REDRAWN/SCANNED ON CAD AND SUPERSEDES SUBMITTAL 4.
 FOR REVISION DESCRIPTION SEE SHEET 1 OF 10

NO.	REVISION	DATE	INITIALS
1	FOR REVISION DESCRIPTION SEE SHEET 1 OF 10		

DR 02-08-14

DRW-1/2/EE/C/30A0504/00N/11F

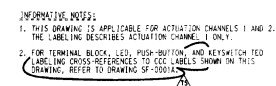


INFORMATIVE NOTES:
 1. THIS DRAWING IS NOT APPLICABLE FOR ACTIVATION CHANNELS 1 AND 2.
 THE LABELING DESCRIBES ACTIVATION CHANNEL 1 ONLY.
 2. FOR TERMINAL BLOCK, LED, PUSH-BUTTON, AND KEYSWITCH IED
 LABELING CROSS-REFERENCES TO CCC LABELS SHOWN ON THIS
 DRAWING, REFER TO DRAWING SP 0001.

E-30AQ-006-X-6 **SHEET 5 OF 10**

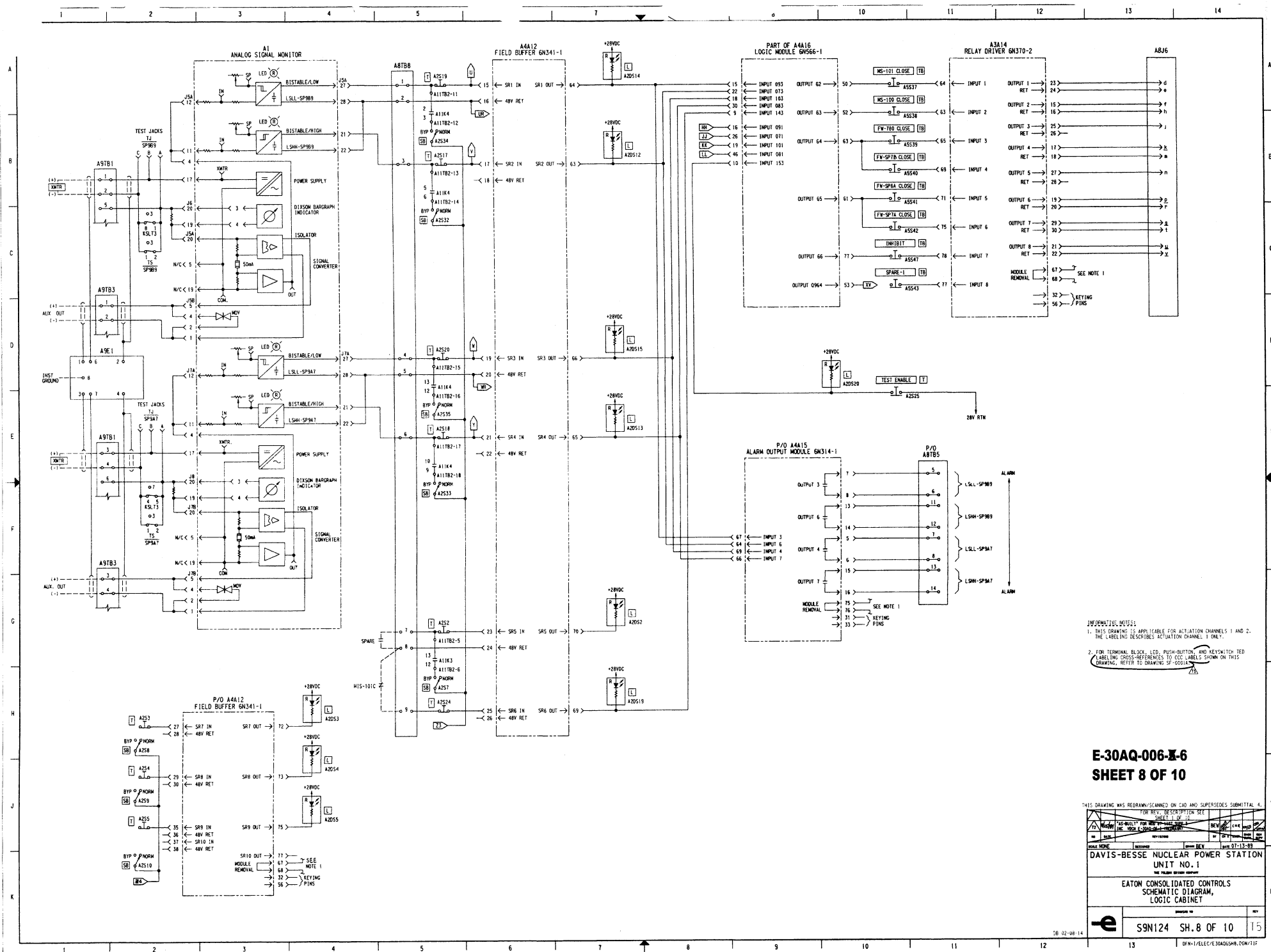
THIS DRAWING WAS REDRAWN/SCANNED ON CAD AND SUPERSEDES SUBMITTAL 4.
 FOR REVISION DESCRIPTION SEE SHEET 3 OF 10

NO	DATE	REVISIONS	BY	CHKD	APP'D
T1	11/18/11	REVISED ONLY	SPN	SPN	SPN
T1	11/18/11	REVISED ONLY	SPN	SPN	SPN
T1	11/18/11	REVISED ONLY	SPN	SPN	SPN



THIS DRAWING WAS REDRAWN/SCANNED ON CAD AND SUPERSEDES SUBMITTAL 4.
FOR REVISION DESCRIPTION SEE SHEET 1 OF 10

REVISION DESCRIPTION SEE SHEET 1 OF 10									
72	0/0/0	SHTS 3, 4, 8, 9 - REVISED ONLY.	CAE	CAE	CAE	CAE	CAE	CAE	CAE
71	0/0/0	SHTS 3, 4, 8, 9 - REVISED ONLY.	CAE	CAE	CAE	CAE	CAE	CAE	CAE
NO	DATE	REVISIONS	BY	CHK	APP	APP	APP	APP	APP



E-30AQ-006-X-6 SHEET 8 OF 10

THIS DRAWING WAS REDRAWN/SCANNED ON CAD AND SUPERSEDES SUBMITTAL 4.			
FOR REV. DESCRIPTION SEE SHEET 1 OF 10.			
DATE	REV	BY	CHK
07-13-89	1	W. J. W.	W. J. W.
DAVIS-BESSE NUCLEAR POWER STATION			
UNIT NO. 1			
EATON CONSOLIDATED CONTROLS			
SCHEMATIC DIAGRAM, LOGIC CABINET			
S9N124 SH. 8 OF 10			

58-92-00-14

DRW-1/ELCC/E-30AQ006N.DWG/117

