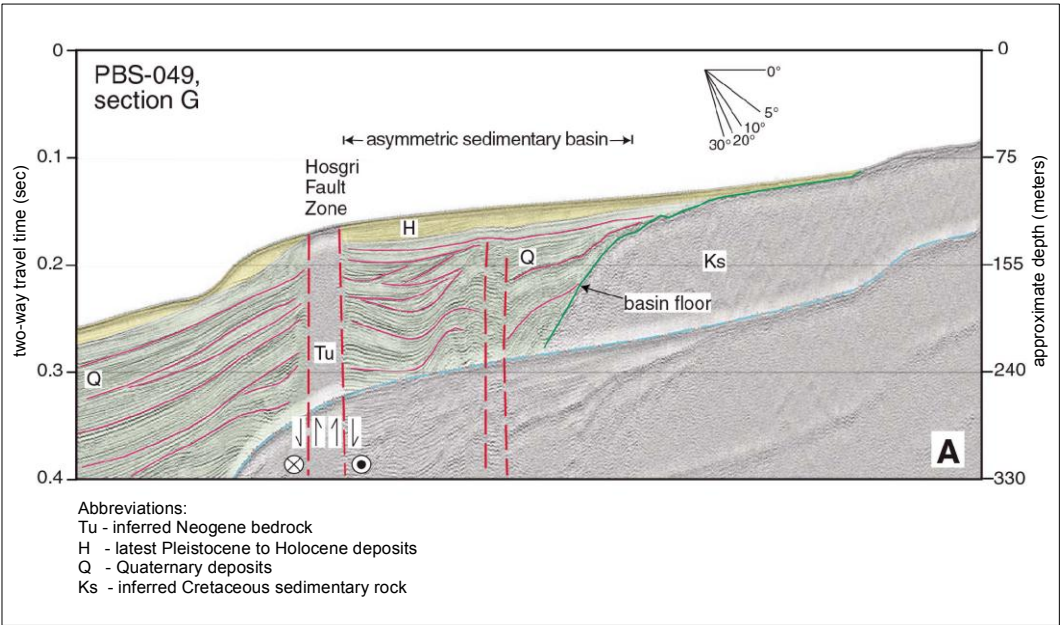
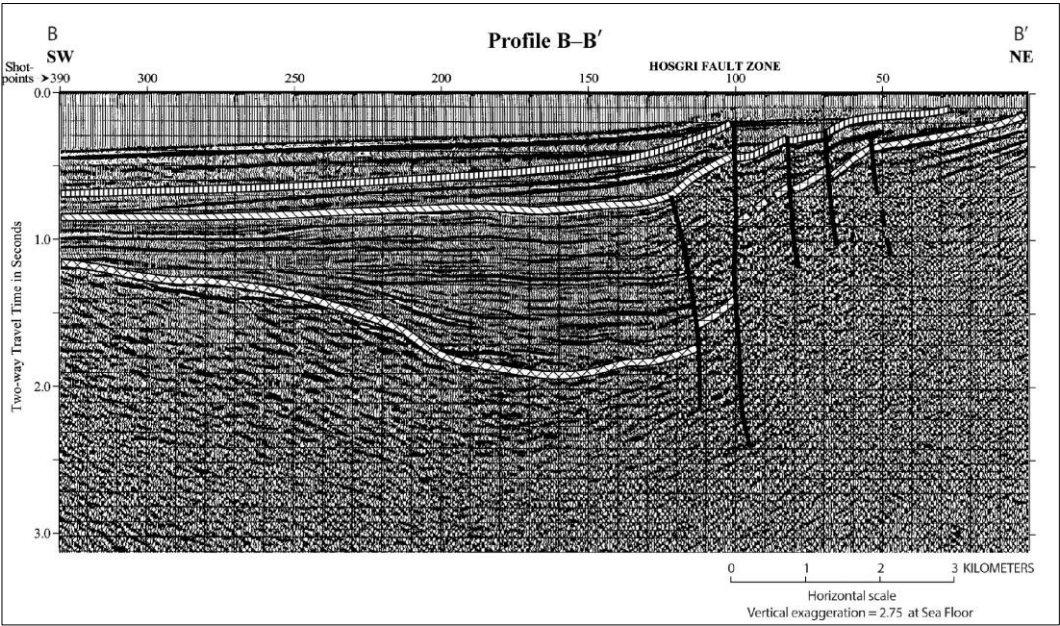


File path: S:\1005\051\Figures\20140625_SN\Figure_1-02.mxd; Date: 07/31/2014; User: Serkan Bozkurt, LCI; Rev: 1

(a) USGS 2D LESS profile (PBS-049, Johnson and Watt, 2012)



(b) HESS Profile B - B' (Western W76A, Willingham et al., 2013)



EXPLANATION

- Early-late Pliocene unconformity
 - Top of Miocene unconformity
 - Top of pre-Miocene basement unconformity
 - Fault
- Note: Faults and unconformities are dashed where continuity is inferred. Arrows show direction of relative displacement on low-angle detachments.

Note: Difference in vertical scale exists between (a) and (b).

**USGS 2D LESS Profile PBS-049
and HESS Profile B - B'**

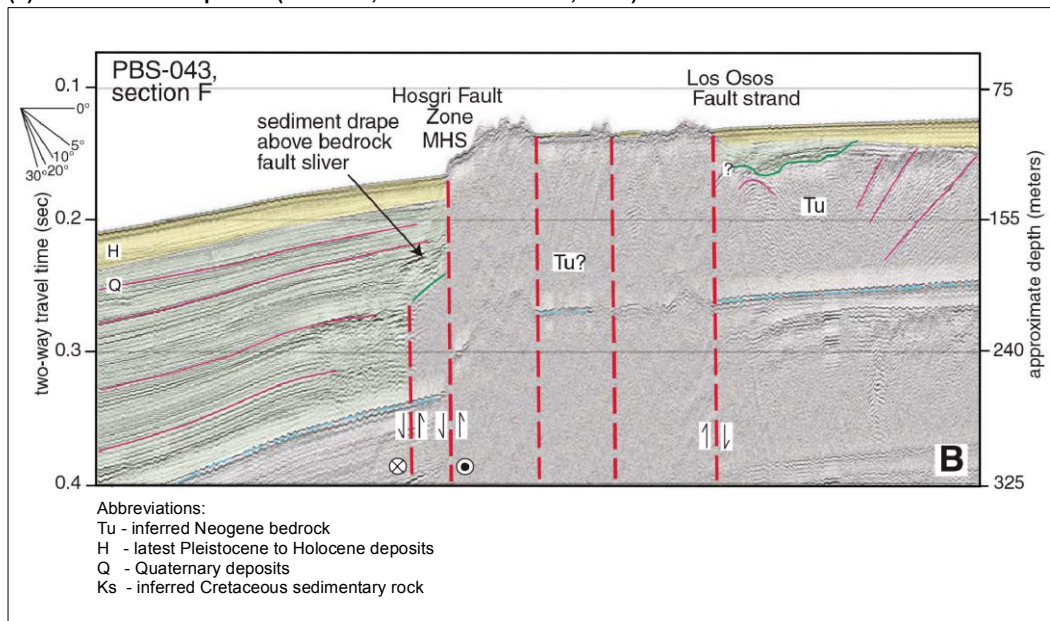
HOSGRI FAULT GEOPHYSICAL SURVEY



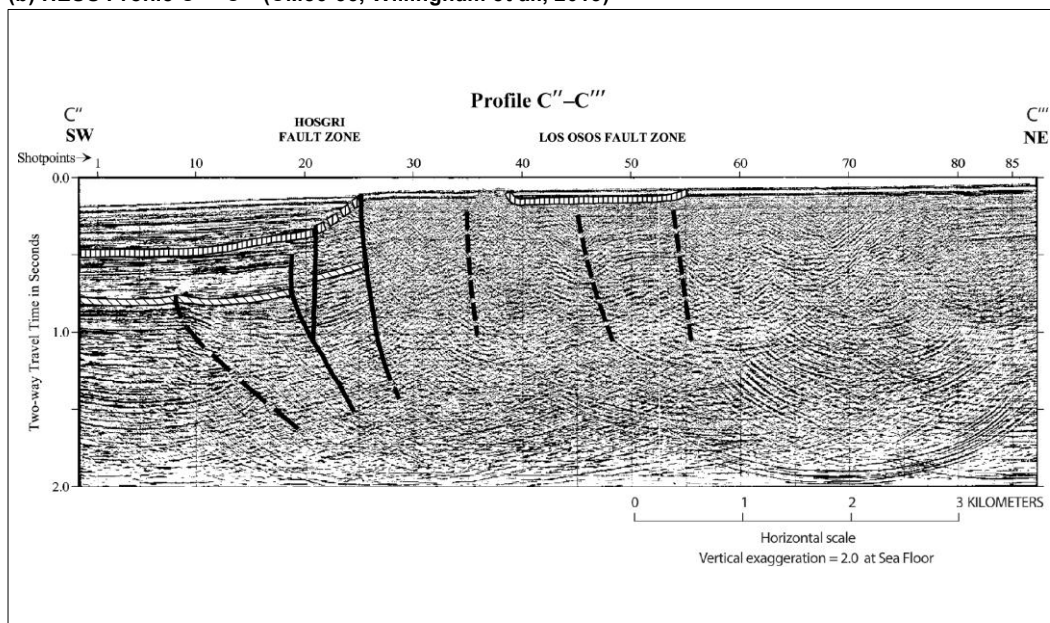
Pacific Gas and Electric Company

Figure 1-3

(a) USGS 2D LESS profile (PBS-043, Johnson and Watt, 2012)



(b) HESS Profile C'' - C''' (CM86-33, Willingham et al., 2013)



EXPLANATION

- Early-late Pliocene unconformity
 - Top of Miocene unconformity
 - Top of pre-Miocene basement unconformity
 - Fault
- Note: Faults and unconformities are dashed where continuity is inferred. Arrows show direction of relative displacement on low-angle detachments.

Note: Difference in vertical scale exists between (a) and (b).

USGS 2D LESS Profile PBS-043 and HESS Profile C'' - C'''

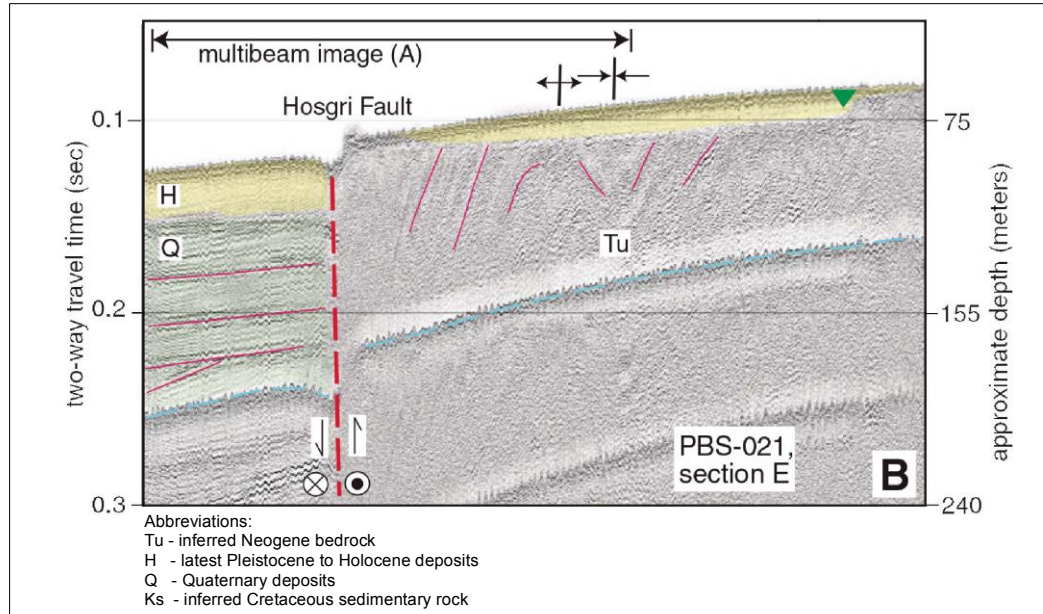
HOSGRI FAULT GEOPHYSICAL SURVEY



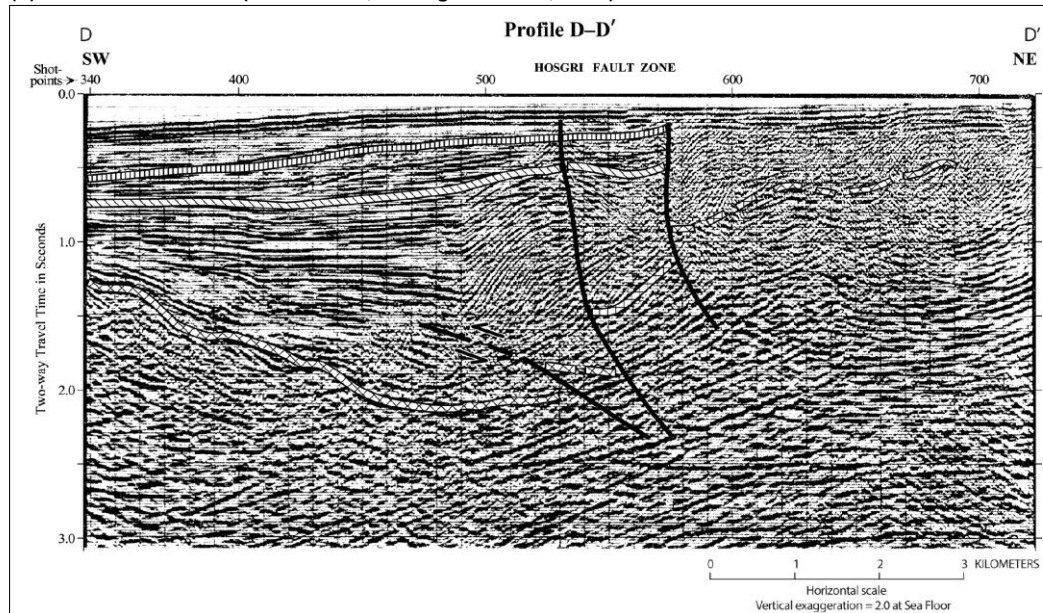
Pacific Gas and Electric Company

Figure 1-4

(a) USGS 2D LESS profile (PBS-021, Johnson and Watt, 2012)



(b) HESS Profile D - D' (Line GSI-85, Willingham et al., 2013)



File path: S:\1005\051\Figures\20140625_SNI\Figure_1-05.mxd; Date: 07/31/2014; User: Alex Remar, LCI; Rev: 1



EXPLANATION

- Early-late Pliocene unconformity
 - Top of Miocene unconformity
 - Top of pre-Miocene basement unconformity
 - Fault
- Note: Faults and unconformities are dashed where continuity is inferred. Arrows show direction of relative displacement on low-angle detachments.
- Note: Difference in vertical scale exists between (a) and (b).

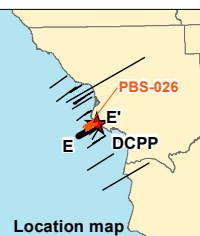
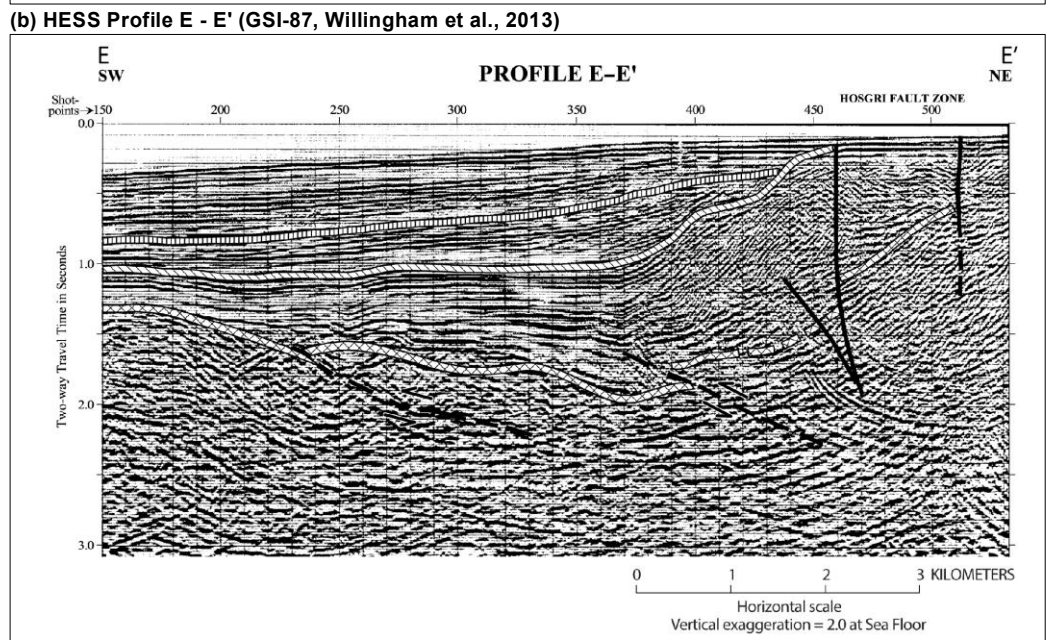
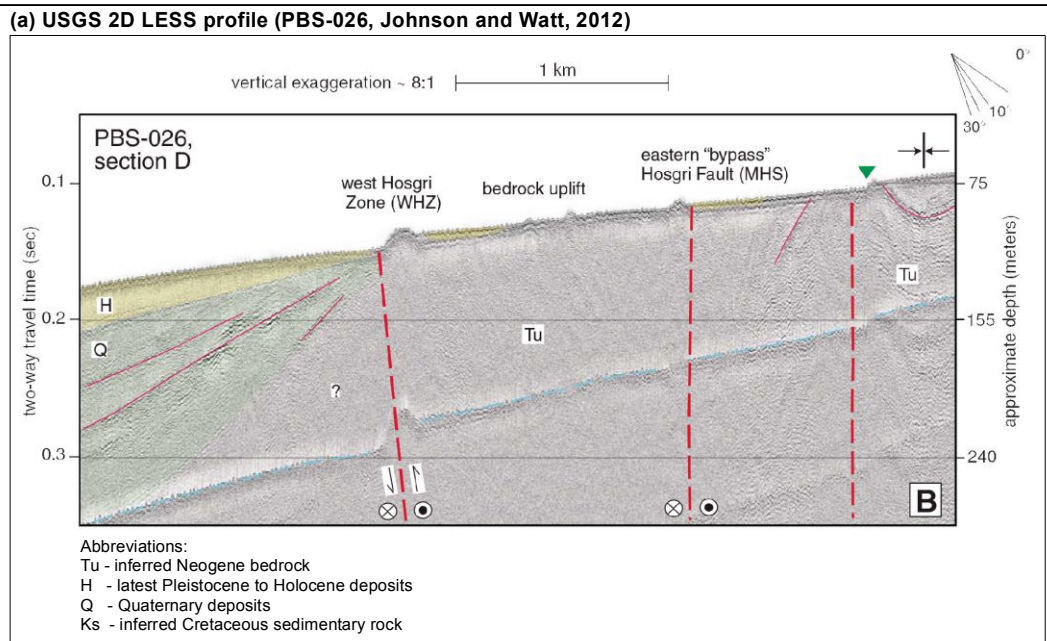
USGS 2D LESS Profile PBS-021 and HESS Profile D - D'

HOSGRI FAULT GEOPHYSICAL SURVEY



Pacific Gas and Electric Company

Figure 1-5



EXPLANATION

- Early-late Pliocene unconformity
- Top of Miocene unconformity
- Top of pre-Miocene basement unconformity
- Fault

Note: Faults and unconformities are dashed where continuity is inferred. Arrows show direction of relative displacement on low-angle detachments.

Note: Difference in vertical scale exists between (a) and (b).

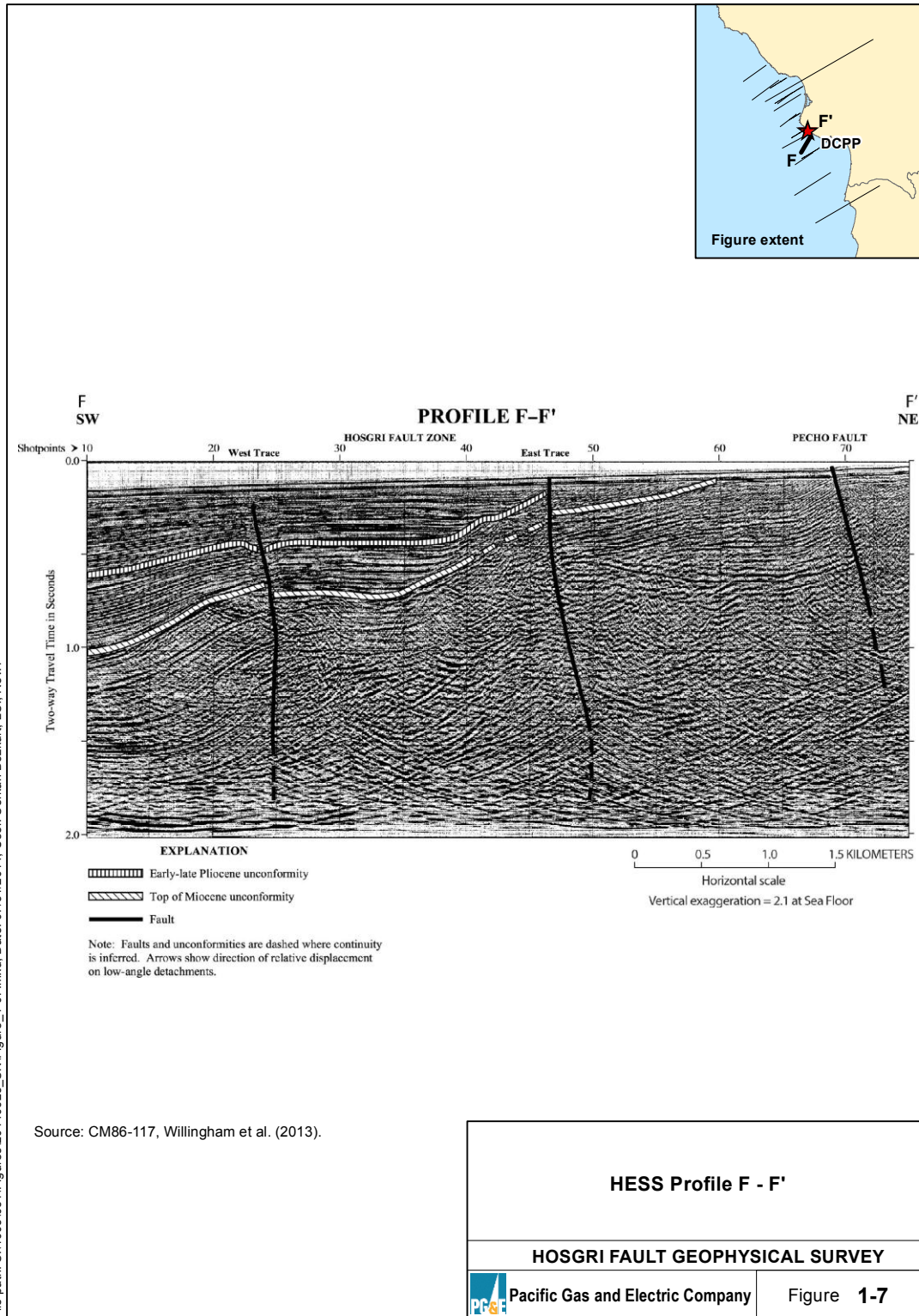
USGS 2D LESS Profile PBS-026 and HESS Profile E - E'

HOSGRI FAULT GEOPHYSICAL SURVEY



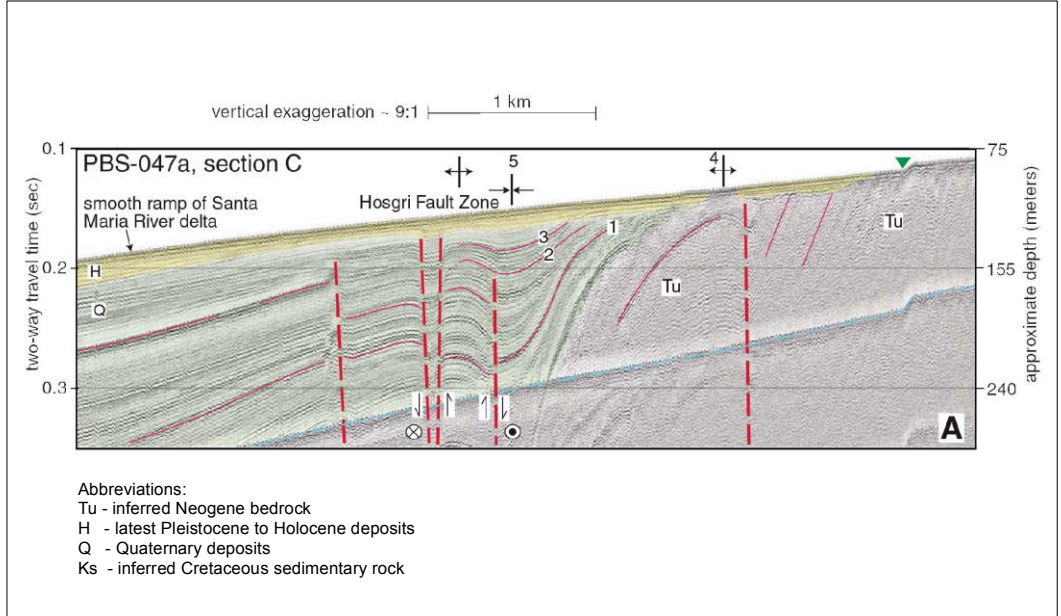
Pacific Gas and Electric Company

Figure 1-6

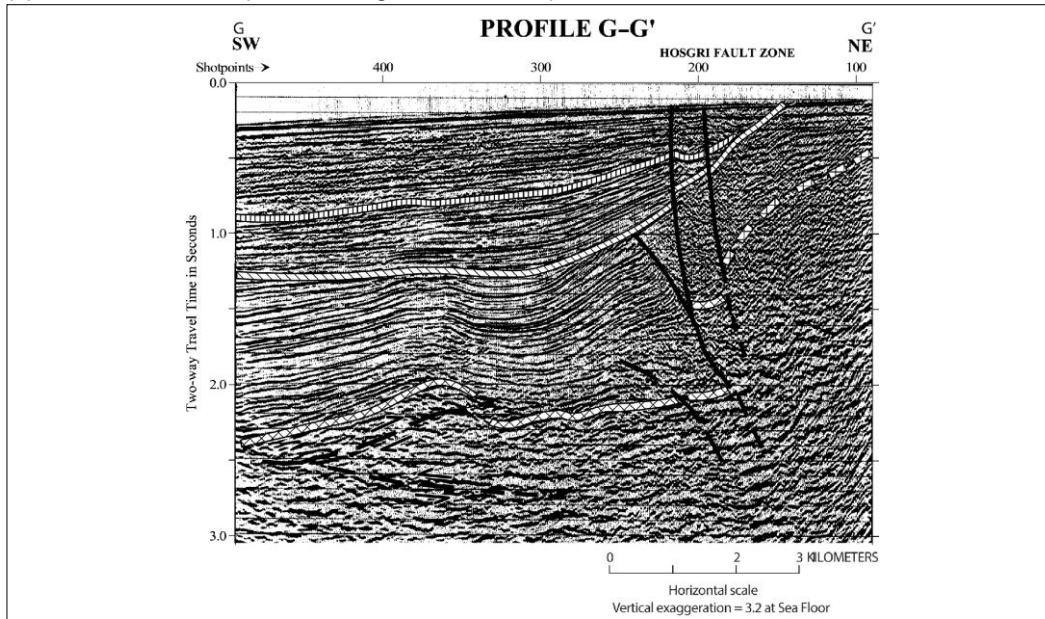


File path: S:\1005\051\Figures\20140625_SNI\Figure_1-07.mxd; Date: 07/31/2014; User: Serkan Bozkurt, LC; Rev: 1

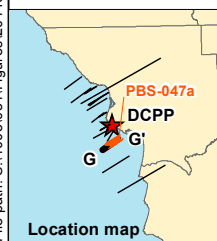
(a) USGS 2D LESS profile (PBS-047a, Johnson and Watt, 2012)



(b) HESS Profile G - G' (J-126, Willingham et al., 2013)



File path: S:\1005051\Figures\20140625_SNI\Figure_1-08.mxd; Date: 07/31/2014; User: Alex Remar, LCI; Rev: 1



EXPLANATION

- Early-late Pliocene unconformity
 - Top of Miocene unconformity
 - Top of pre-Miocene basement unconformity
 - Fault
- Note: Faults and unconformities are dashed where continuity is inferred. Arrows show direction of relative displacement on low-angle detachments.
- Note: Difference in vertical scale exists between (a) and (b).

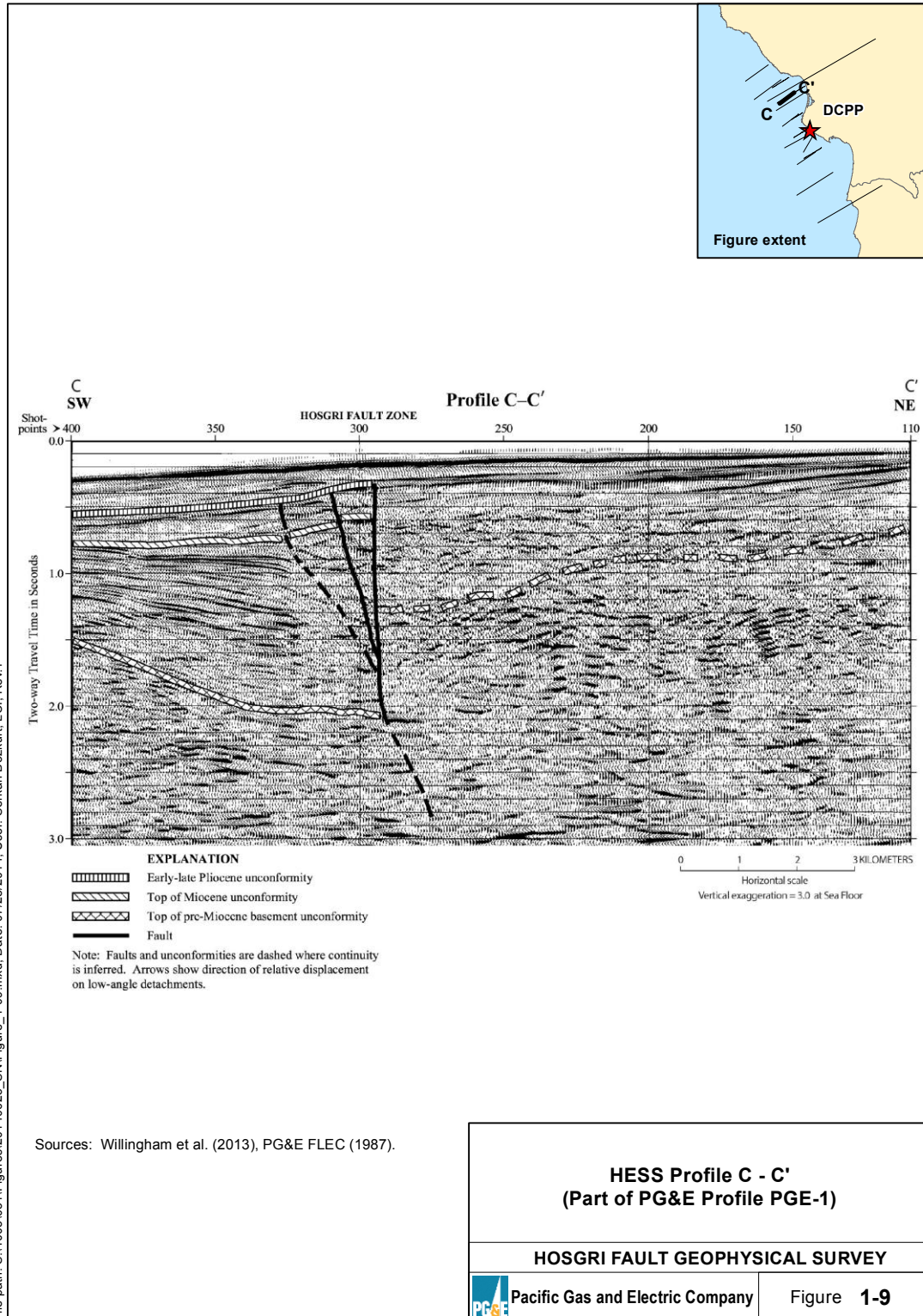
USGS 2D LESS Profile PBS-047a and HESS Profile G - G'

HOSGRI FAULT GEOPHYSICAL SURVEY

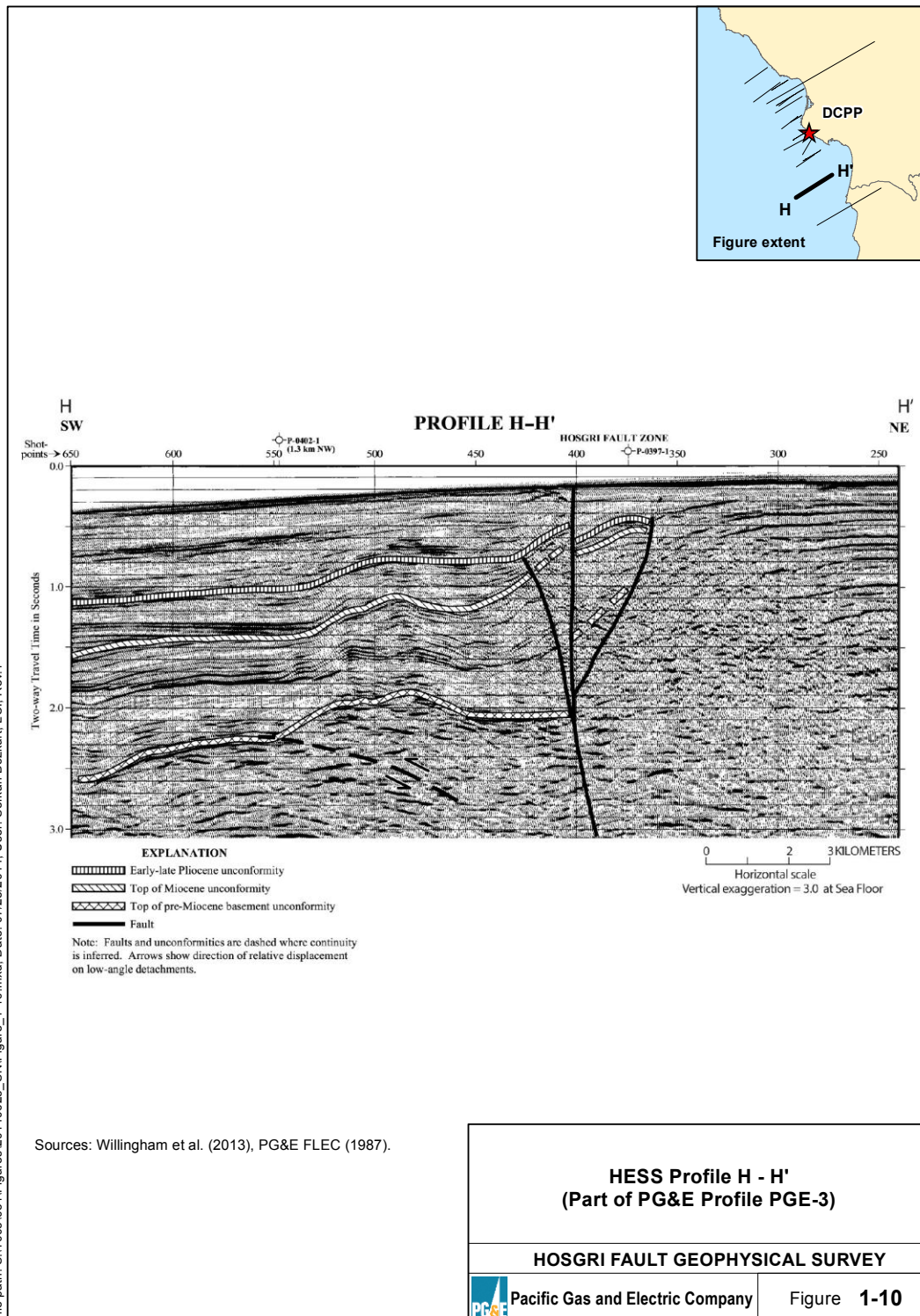


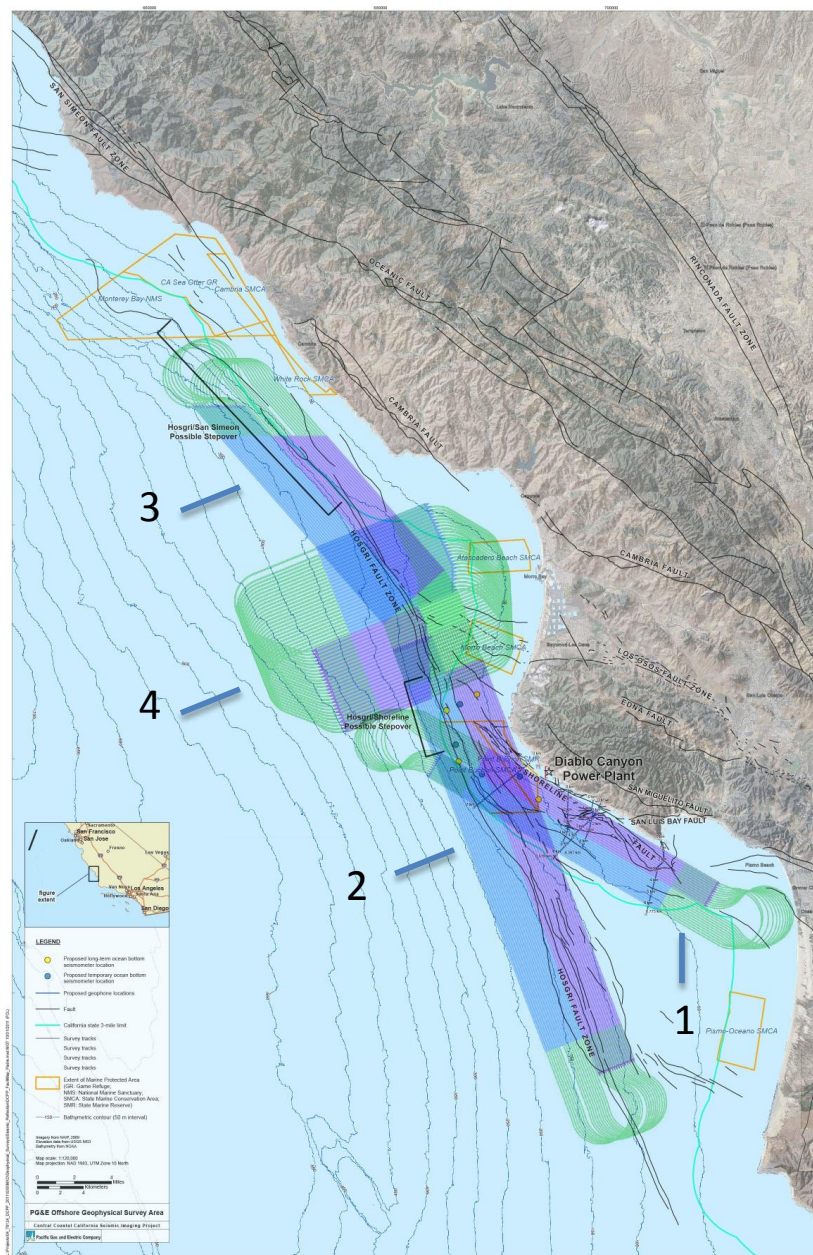
Pacific Gas and Electric Company

Figure 1-8



File path: S:\1005\05\Figures\20140625_SNI\Figure_1-09.mxd; Date: 07/28/2014; User: Serkan Bozkurt, LCI; Rev:1





**Proposed Track Lines
for PG&E CCCSIP HESS.**

PROJECT TITLE



Pacific Gas and Electric Company

Figure 1-11



