



August 21, 2014

Nuclear Regulatory Commission
Region IV
611 Ryan Plaza, Suite 400
Arlington, TX 76011-4005
Attn: Jack Whitten

Sent VIA email to: jack.whitten@nrc.gov

RE: **Final** – Radioactive Material Abandonment Report on Fieldwood Energy's well, South Marsh Island 142 A-7E (OCS – G 01216), in the Gulf of Mexico by Weatherford International's License 42-26891-01.

Mr. Whitten,

This final abandonment report is a follow-up to the original report submitted 19-NOV-2004. This well formerly belonged to Hunt Petroleum (AEC), Inc. The ownership of this well has changed numerous times in the past ten years. However, the current owner is Fieldwood Energy. As per our conversation on 17-JUL-2014 and your approval email, on 18-JUL-2014, to abandoned one 45 mCi Cs-137 source, please find the following written report pursuant to 10 CFR 39.77 concerning the abandonment of a radioactive well logging source in the above referenced well.

Date of Occurrence: July 26, 2004 (Initially Stuck)

Description of Recovery Efforts:

In addition to the unsuccessful recovery efforts made July 27 – 28, 2004, recovery efforts were attempted between July 1 and July 4, 2014. The attempts in 2014 recovered wireline down to a depth of 3,574' however, this was the deepest depth achieved and recovery of the tool and source were unsuccessful.

Description of Abandonment:

This well consists of two different strings of tubing, one short string (SS) and one long string (LS). The tool and radioactive source are located in the SS of tubing between 6,238' and 6,423'. The tool and source was sealed in place, within the SS, with cast iron bridge plugs (CIBP) and red dye cement. The first CIBP was set at 3,570' and 50' of red dye cement. The second CIBP was set at 2,980' and 500' of red dye cement. 2' of steel ball bearings were placed above the top cement plug to serve as a deflection device. Additionally, the LS of tubing was also plugged and cemented in two places and 2' of steel ball bearings were placed above the top plug to prevent future entry into this tubing string, which is adjacent to the radioactive source. Both tubing strings were then severed at approx. 1,500'. The entire well will be abandon with a series of CIBP's and cement. Radiation surveys conducted during fishing and cementing operations indicated NO readings above Background.

See attached well diagram on pg.3

Weatherford

7504 Benbrook Parkway
Benbrook, TX 76126
USA

+1.817.249.7013 Direct
+1.817.980.7106 Mobile
+1.817.409.1722 Fax

www.weatherford.com
christopher.perry@weatherford.com



Description of Source Involved:

1. **Serial Number:** XX-824
Isotope: Cs-137
Description: Doubly-encapsulated sealed source meeting or exceeding the requirements of IAEA Special Form, NRC well logging source requirements specified in 10 CFR 39.41.
Activity: 45 milliCuries (1.67 Gigabecquerels)
Manufacturer and Model Number: Isotope Products, Model HEG-137
Depth of Source: between 6,238' and 6,423 ft.

Surface Location and Identification of Well:

Well Operator:	Fieldwood Energy
Well Name:	OCS-G 01216 #A-7E
API Number:	17-708-40210-00
Well Location (Surface):	Gulf of Mexico (South Marsh Island Block 142)
Lat & Long:	Lat: 28.251478 Long: -91.863282

Depth of Deflection Device: 2,471 ft

Top of Cement Plug: 2,473 ft

Depth of the Original Wellbore: 6,423 ft

Information Contained on the permanent Identification Plaque:


Weatherford will have a wellhead plaque, with all required information, constructed and delivered to Fieldwood Energy for installation. (See attached plaque layout pg.4)

Additional Agencies Receiving Copy of Report:

Lafayette District Office U.S. Department of the Interior
Bureau of Safety and Environmental Enforcement
201 Energy Parkway, Suite 410
Lafayette, LA 70508
Attn: Mike Burdette
Sent via e-mail to michael.burdette@bsee.gov

If you have any questions related to these matters, please do not hesitate to contact me. My direct contact information is shown below.

Regards,



Christopher Sean Perry
US Radiation Safety Manager

Weatherford

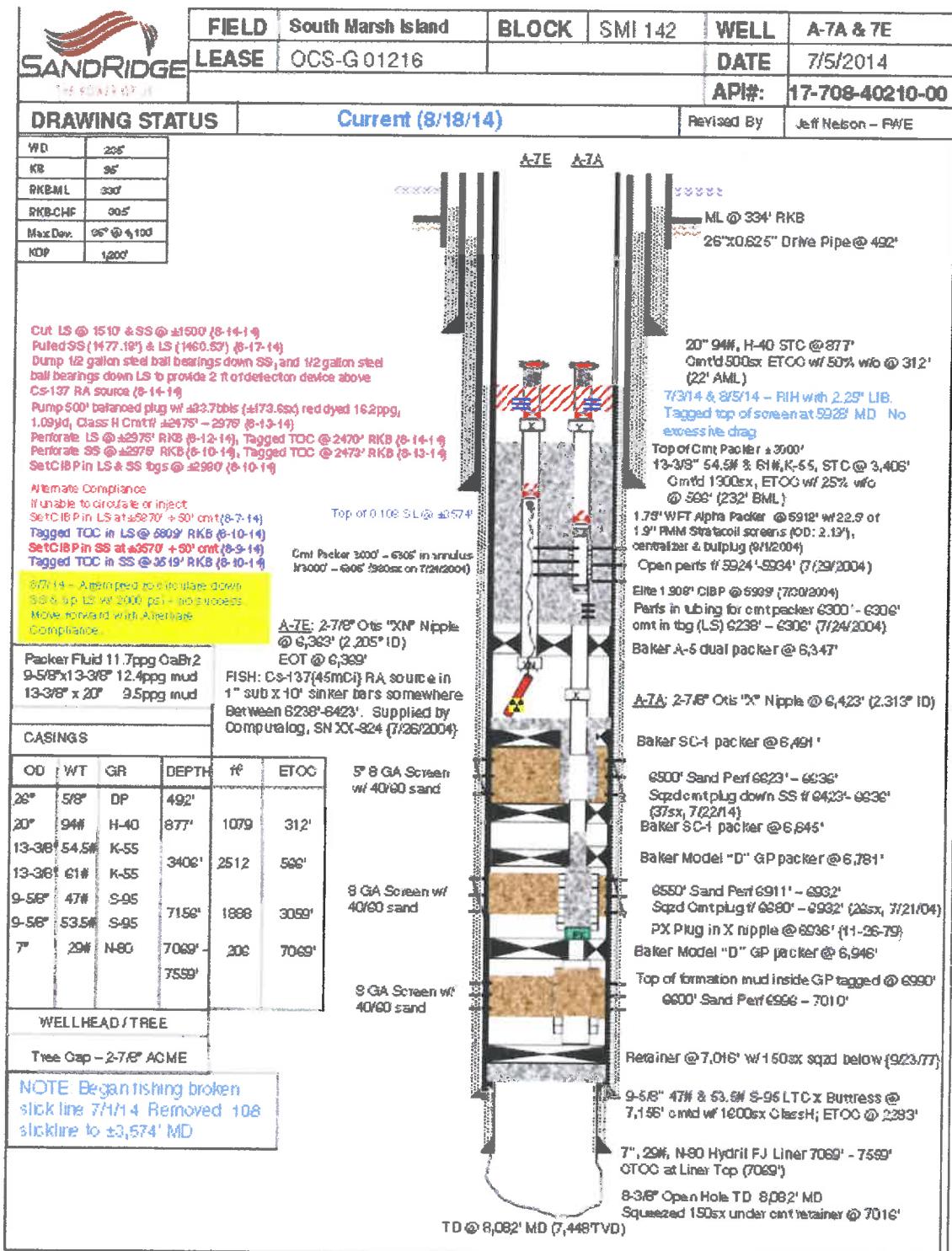
7504 Benbrook Parkway
Benbrook, TX 76126
USA

+1.817.249.7013 Direct
+1.817.980.7106 Mobile
+1.817.409.1722 Fax

www.weatherford.com
christopher.perry@weatherford.com



Weatherford



Weatherford

7504 Benbrook Parkway
Benbrook, TX 76126
USA

+1.817.249.7013 Direct
+1.817.980.7106 Mobile
+1.817.409.1722 Fax

www.weatherford.com
christopher.perry@weatherford.com

Page 3 of 4

**Fieldwood Energy
OCS G 01216 #A-7E
API # 17-708-4021000**

NAD27

Lat: 28.251478

Long: -91.863282



CAUTION



**ONE 45 mCi Cs-137
RADIOACTIVE SOURCE**

**ABANDONED August 18, 2014
Between 6,238' and 6,423 MD
TOP OF CEMENT PLUG AT 2,473' RKB
DEFLECTION DEVICE AT 2,471' RKB**

**DO NOT RE-ENTER ORIGINAL WELLBORE
BELOW 2,471' BEFORE CONTACTING**

**US NUCLEAR REGULATORY COMMISSION
&
BUREAU OF SAFETY AND ENVIRONMENTAL
ENFORCEMENT**