
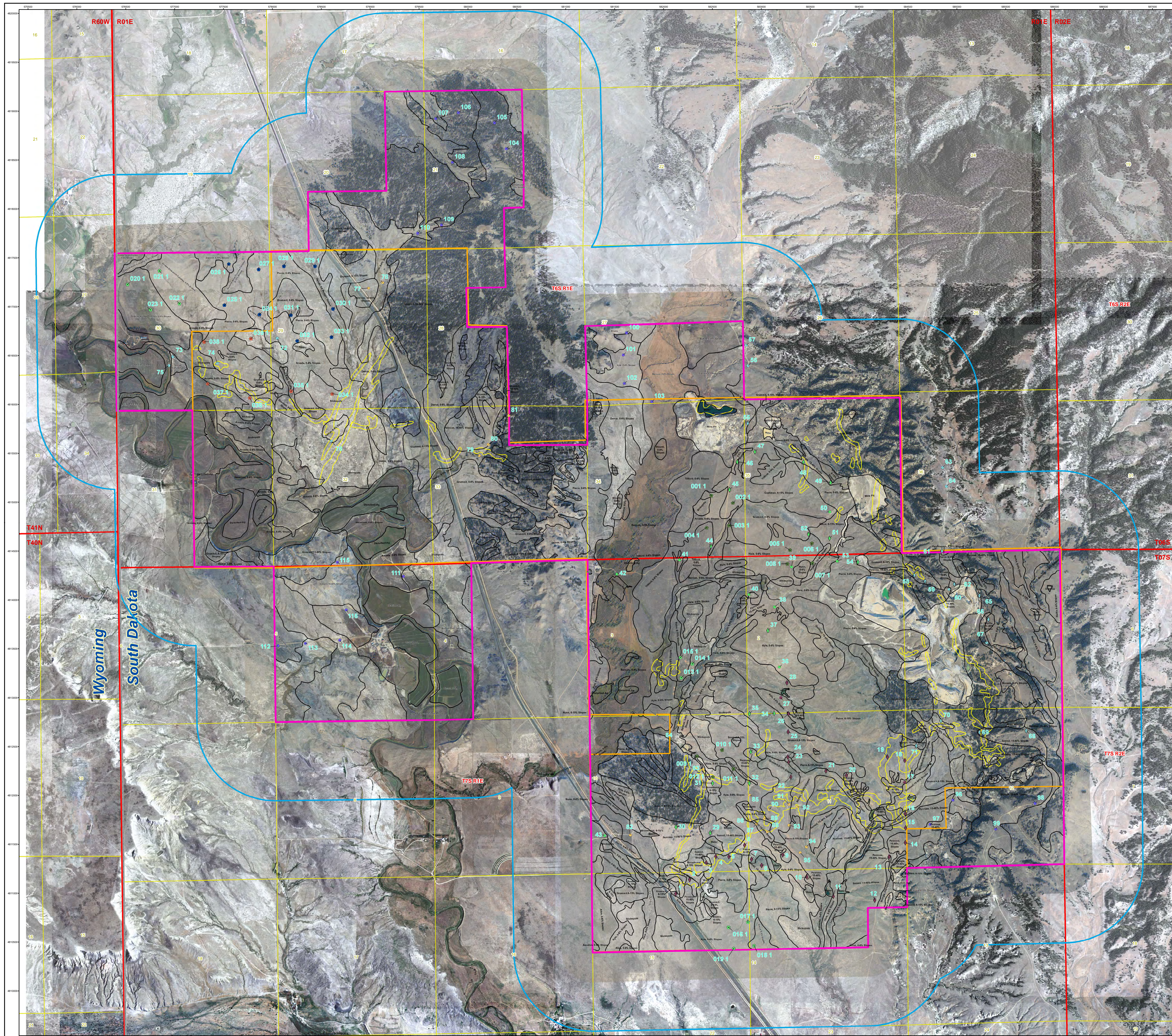


United States Nuclear Regulatory Commission Official Hearing Exhibit																									
In the Matter of: POWERTECH USA, INC. (Dewey-Burdock In Situ Uranium Recovery Facility)																									
	<table><tr><td>ASLBP #:</td><td>10-898-02-MLA-BD01</td><td>Identified:</td><td>8/19/2014</td></tr><tr><td>Docket #:</td><td>04009075</td><td>Withdrawn:</td><td></td></tr><tr><td>Exhibit #:</td><td>APP-015-G-00-BD01</td><td>Stricken:</td><td></td></tr><tr><td>Admitted:</td><td>8/19/2014</td><td></td><td></td></tr><tr><td>Rejected:</td><td></td><td></td><td></td></tr><tr><td>Other:</td><td></td><td></td><td></td></tr></table>	ASLBP #:	10-898-02-MLA-BD01	Identified:	8/19/2014	Docket #:	04009075	Withdrawn:		Exhibit #:	APP-015-G-00-BD01	Stricken:		Admitted:	8/19/2014			Rejected:				Other:			
ASLBP #:	10-898-02-MLA-BD01	Identified:	8/19/2014																						
Docket #:	04009075	Withdrawn:																							
Exhibit #:	APP-015-G-00-BD01	Stricken:																							
Admitted:	8/19/2014																								
Rejected:																									
Other:																									

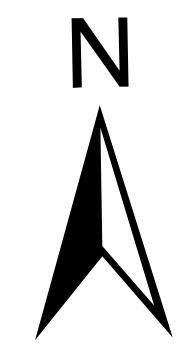


Legend

Soils with in Project Boundary			
Soil Series Name	Acres	Soil Series Name	Acres
Alva, 6-10% Slopes	37.52	Laramie, 6-10% Slopes	58.80
Arroyo, 6-10% Slopes	3.72	Melrose, 15-40% Slopes	20.00
Arroyo, 6-10% Slopes	345.17	Mesa, 6-10% Slopes	345.01
Arroyo, 6-10% Slopes	60.67	NW, 15-40% Slopes	9.71
Arroyo, 6-10% Slopes	27.35	NW, 6-10% Slopes	8.79
Barnard, 6-10% Slopes	277.51	NW, 6-10% Slopes	184.44
Barnard, 6-10% Slopes	23.40	Platte, 6-10% Slopes	0.66
Barnard, 6-10% Slopes	68.74	Platte, 15-40% Slopes	184.44
Barnard, 6-10% Slopes	100.95	Platte, 6-10% Slopes	100.95
Barnard, 6-10% Slopes	282.05	Platte, 6-10% Slopes	476.10
Barnard, 6-10% Slopes	61.51	Platte, 15-40% Slopes	184.44
Barnard, 6-10% Slopes	67.89	Platte, 15-40% Slopes	184.44
Barnard, 6-10% Slopes	120.08	Platte, 15-40% Slopes	12.22
Barnard, 6-10% Slopes	347.76	Platte, 15-40% Slopes	85.88
Barnard, 6-10% Slopes	123.91	Platte, 15-40% Slopes	184.44
Barnard, 6-10% Slopes	255.08	Platte, 15-40% Slopes	70.80
Barnard, 6-10% Slopes	82.89	Platte, 6-10% Slopes	100.95
Barnard, 6-10% Slopes	645.49	Platte, 6-10% Slopes	17.68
Barnard, 6-10% Slopes	13.51	Platte, 6-10% Slopes	12.75
Barnard, 6-10% Slopes	44.24	Platte, 6-10% Slopes	17.68
Barnard, 6-10% Slopes	208.04	Platte, 6-10% Slopes	1.08
Barnard, 6-10% Slopes	244.02	Platte, 6-10% Slopes	13.52
Barnard, 6-10% Slopes	29.89	Platte, 6-10% Slopes	10.50
Barnard, 6-10% Slopes	685.44	Platte, 6-10% Slopes	9.11

- 9/17/2007 - Soil Sample Collected
- 7/6/2008 - LAD Soil/Veg Sample Collected
- 7/14/2008 - LAD Soil/Veg Sample Collected
- 7/15/2008 - LAD Soil/Veg Sample Collected
- 7/6/2008 - LAD Soil/Veg Sample Collected
- 9/18/2007 - Soil Sample Collected
- 9/19/2007 - Soil Sample Collected
- 9/20/2007 - Soil Sample Collected
- 10/14/2008 - Soil Sample Collected
- 7/6/2008 - LAD Soil Sample Collected
- 7/6/2008 - LAD Soil Sample Collected
- 7/14/2008 - LAD Soil Sample Collected
- 7/15/2008 - LAD Soil Sample Collected
- 9/17/2007 - Soil Verification Points
- 9/18/2007 - Soil Verification Points
- 9/19/2007 - Soil Verification Points

- Soil Map Units
- One Bodies
- Project Boundary
- Project Boundary 1/2 Mi Buffer
- Project Boundary for Field Survey
- Sections
- TWNRMG
- State Boundary



0 0.1 0.2 0.4
Miles

NAD - 1983 UTM, Zone 13N
1 inch equals 1,050 feet

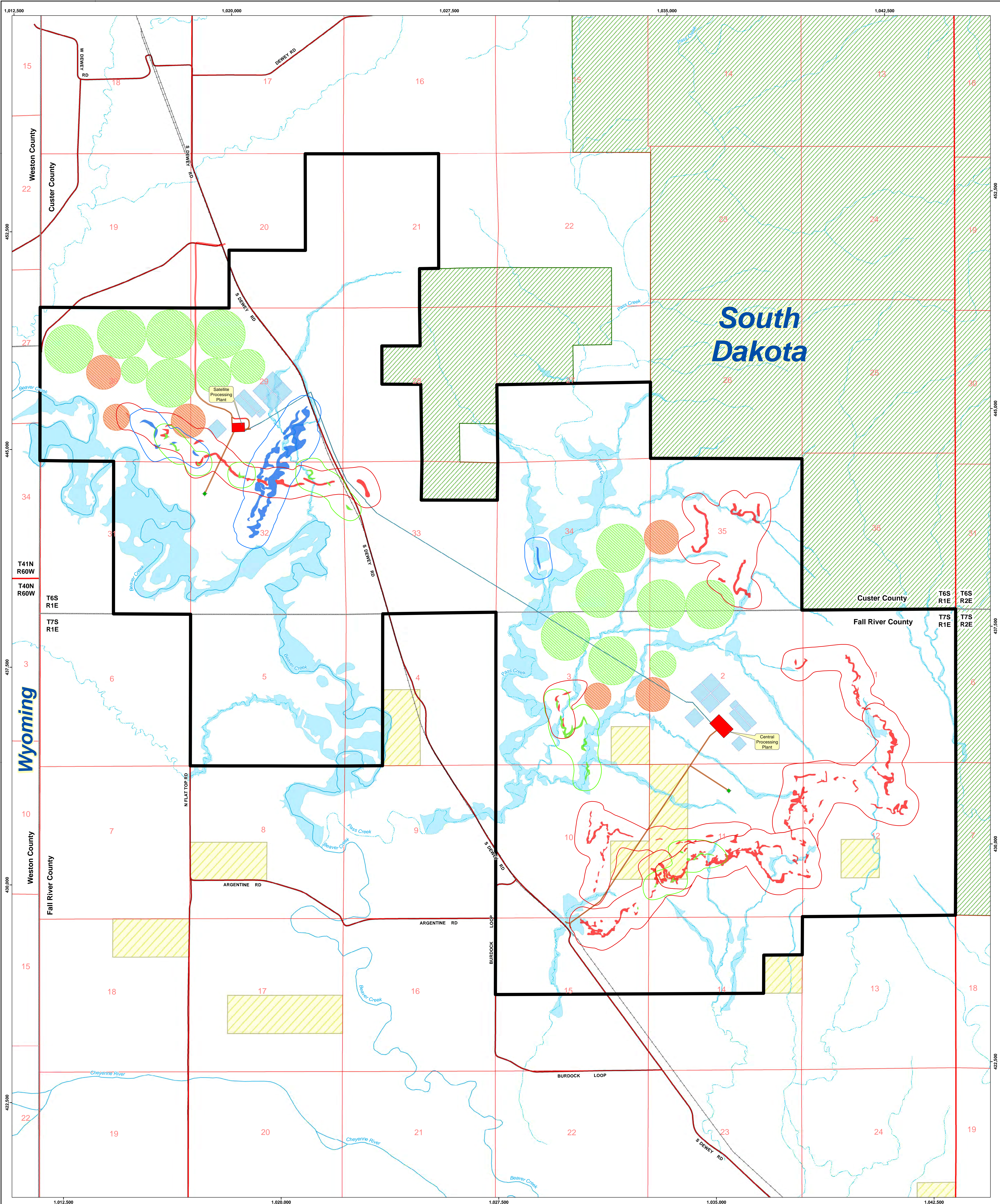
Soil Map

Dewey-Burdock Project
South Dakota



Created By: BKS Environmental - Tracy Spells
Date: 11/11/08
Map File: DeweyBurdock_Soil_map_v8_11112008.mxd

Plate
2.6-16



Legend

Black Hills National Forest

BLM Land

Processing Plants

Ponds

Ephemeral Streams

Perennial Streams

100-year Flood Inundation Boundary

Madison Well

Existing Roads Used for Access

Access Roads

BNSF Railroad

County Roads

Plant-to-Plant Pipeline

Land Application

Standby Land Application

Potential Well Field Areas

Fall River

Upper Chilson

Middle/Lower Chilson

Ore Bodies

Fall River

Upper Chilson

Middle/Lower Chilson

0 500 1,000 2,000 3,000 4,000

0 250 500 1,000

Feet

Meters

CONSULTANT

REF 977

CHECK SCALES

DATE 15-Dec-2013

DRAWN S. Hestick

CHECKED J. Bonner, J. Mays

DATE 15-Dec-2013

APPROVED

DATE

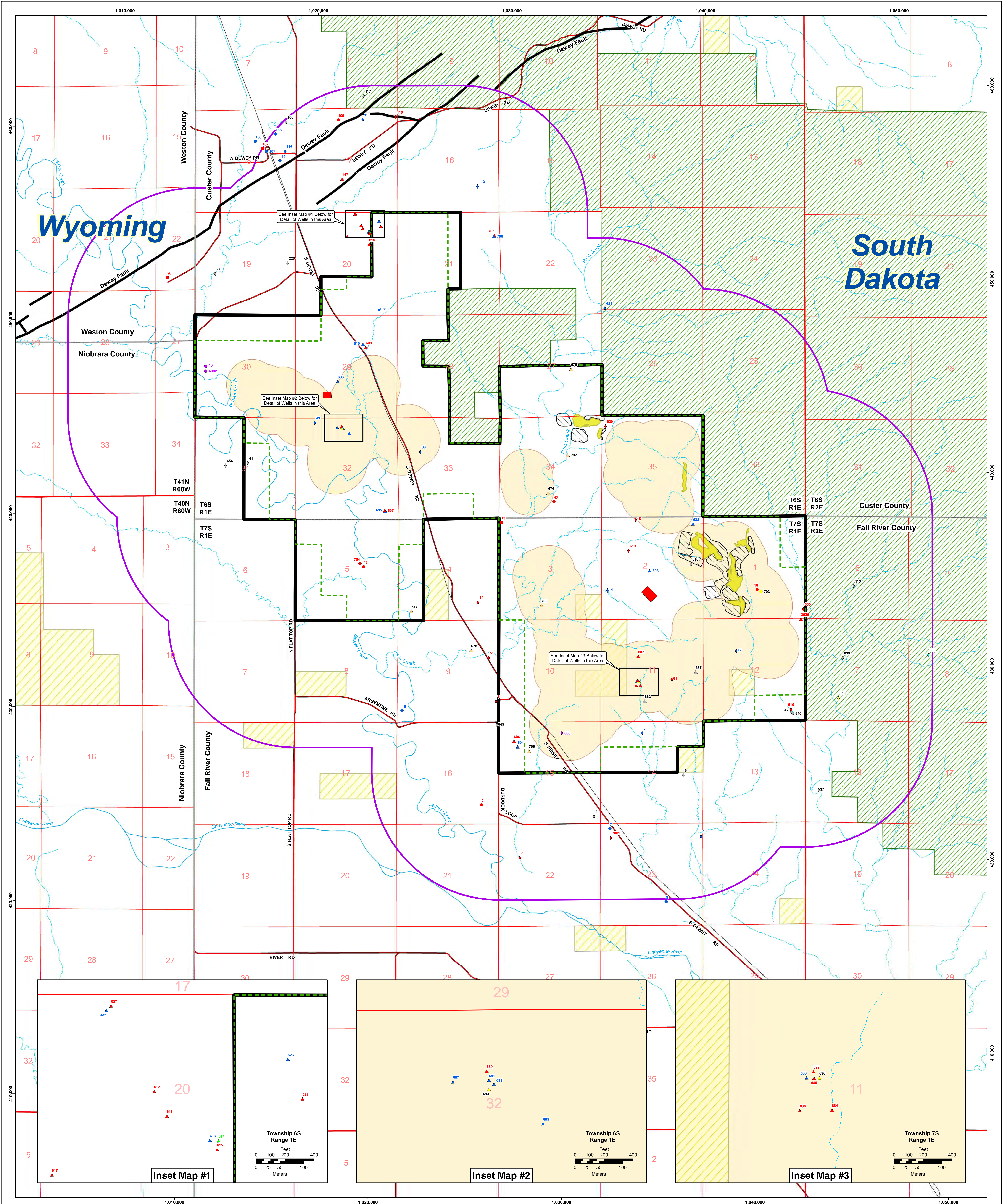
POWERTech (USA) INC.

Plate 2.7-1

Aerial Extent of 100-year Flood and Proposed Facilities and Potential Well Fields

Dewey-Burdock Project

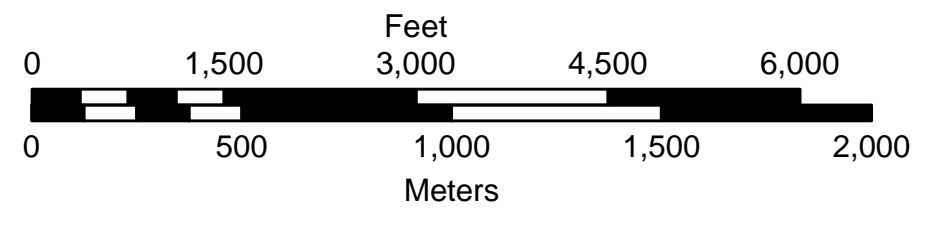
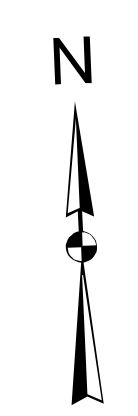
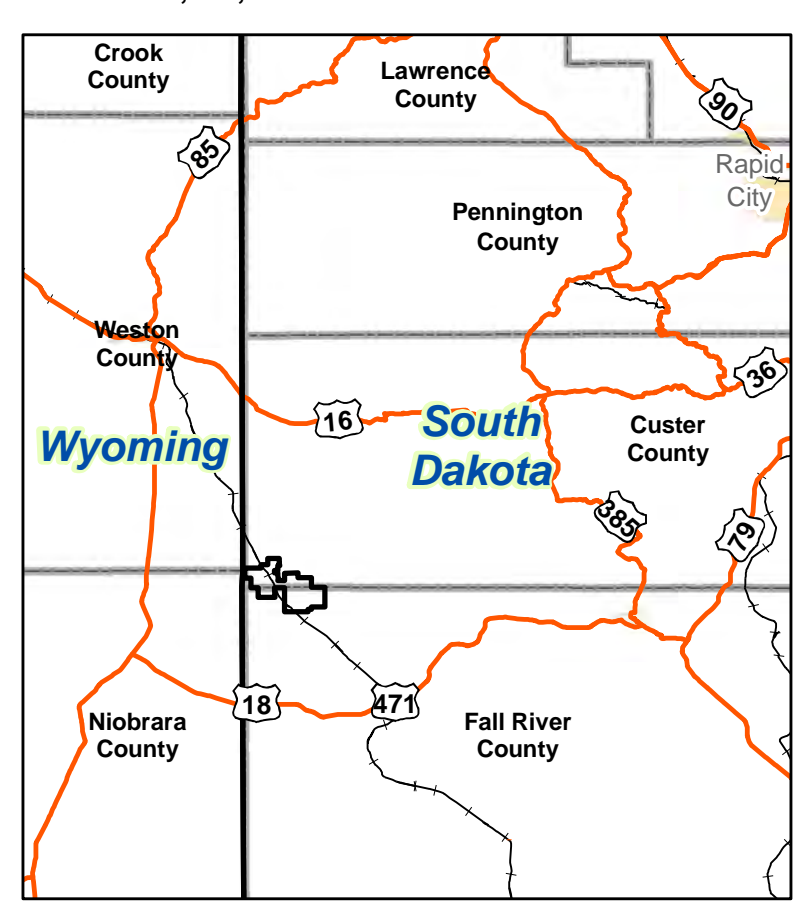
TOWNSHIP: NAD 27, South Dakota State Plane South (feet)



- Legend**
- Project Boundary
 - Proposed Aquifer Exemption Boundary
 - 2 km from Project Boundary
 - Black Hills National Forest
 - BLM Land
 - Processing Plants
 - BNSF Railroad
 - County Roads
 - Ephemeral Streams
 - Perennial Streams
 - Open Pit Uranium Mines
 - Spoil Piles
 - 1/4 Mile from Potential Well Field Area

- Well Use**
- Monitor
 - Domestic
 - Stock
 - Alluvium
 - Chilson
 - Fuson
 - Fall River
 - Inyan Kara
 - Unknown
 - Sundance
 - Unknapa

- Screened Interval**
- Alluvium
 - Chilson
 - Fuson
 - Fall River
 - Inyan Kara
 - Unknown
 - Sundance
 - Unknapa



REVISIONS			
#	DRAWN	CHECKED	APPROVED
1			
2			
3			
4			
5			
6			
7			
8			
9			
10			

Powertech (USA) Inc.
Plate 2.7-2
Wells within 2 km of Project Boundary
Dewey-Burdock Project

DATE: 16-Dec-2013
DRAWN: S. Hainick
CHECKED: J. Mays

DATE: 16-Dec-2013
APPROVED: S. Hainick
FILE: R896_VelloWells2km.pdf
FILE: P:\Dewey-Burdock\Submittals\WVC TR RAI June 2011\Exhibits 3.1-1.mxd