
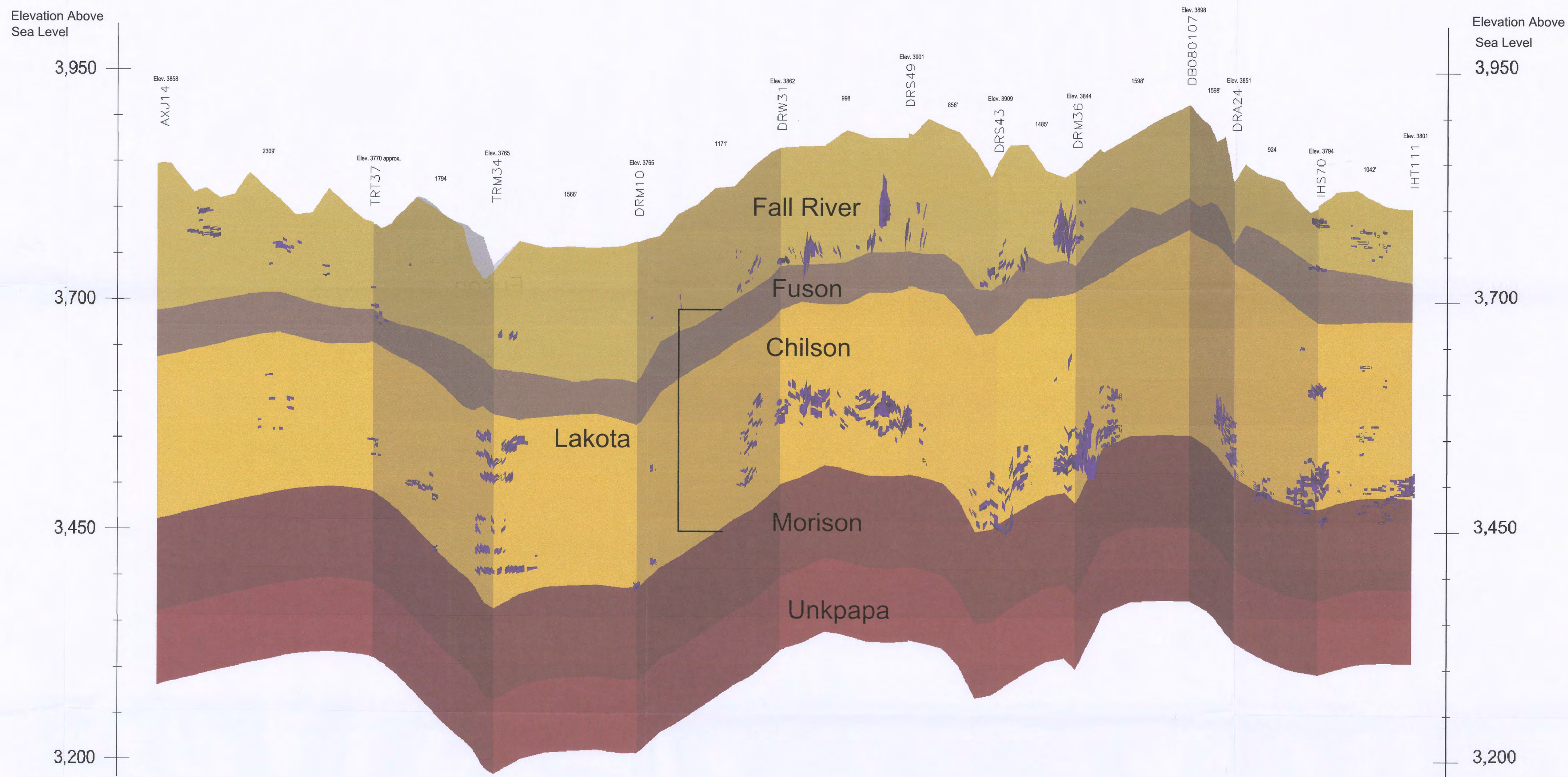


United States Nuclear Regulatory Commission Official Hearing Exhibit																									
In the Matter of: POWERTECH USA, INC. (Dewey-Burdock In Situ Uranium Recovery Facility)																									
	<table><tr><td><b>ASLBP #:</b></td><td>10-898-02-MLA-BD01</td><td><b>Identified:</b></td><td>8/19/2014</td></tr><tr><td><b>Docket #:</b></td><td>04009075</td><td><b>Withdrawn:</b></td><td></td></tr><tr><td><b>Exhibit #:</b></td><td>APP-040-R-00-BD01</td><td><b>Stricken:</b></td><td></td></tr><tr><td><b>Admitted:</b></td><td>8/19/2014</td><td></td><td></td></tr><tr><td><b>Rejected:</b></td><td></td><td></td><td></td></tr><tr><td><b>Other:</b></td><td></td><td></td><td></td></tr></table>	<b>ASLBP #:</b>	10-898-02-MLA-BD01	<b>Identified:</b>	8/19/2014	<b>Docket #:</b>	04009075	<b>Withdrawn:</b>		<b>Exhibit #:</b>	APP-040-R-00-BD01	<b>Stricken:</b>		<b>Admitted:</b>	8/19/2014			<b>Rejected:</b>				<b>Other:</b>			
<b>ASLBP #:</b>	10-898-02-MLA-BD01	<b>Identified:</b>	8/19/2014																						
<b>Docket #:</b>	04009075	<b>Withdrawn:</b>																							
<b>Exhibit #:</b>	APP-040-R-00-BD01	<b>Stricken:</b>																							
<b>Admitted:</b>	8/19/2014																								
<b>Rejected:</b>																									
<b>Other:</b>																									

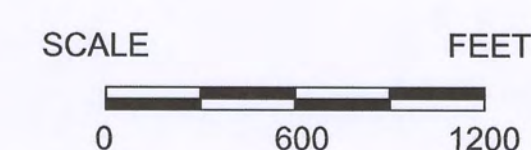


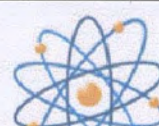
J'  
SOUTH



vertical exaggeration = 10X

D82



CONSULTANT		<div></div> <div><b>POWERTech (USA) INC.</b></div>		<div><b>PLATE 3.3-14</b></div> <div><b>Ore Cross Section J-J'</b></div> <div><b>Fall River &amp; Custer Counties</b></div>																																			
<table><tr><th colspan="4">REVISIONS</th></tr><tr><th>#</th><th>DRAWN</th><th>CHECKED</th><th>APPROVED DATE</th></tr><tr><td></td><td></td><td></td><td></td></tr><tr><td></td><td></td><td></td><td></td></tr><tr><td></td><td></td><td></td><td></td></tr><tr><td></td><td></td><td></td><td></td></tr><tr><td></td><td></td><td></td><td></td></tr><tr><td></td><td></td><td></td><td></td></tr></table>						REVISIONS				#	DRAWN	CHECKED	APPROVED DATE																										
						REVISIONS																																	
						#	DRAWN	CHECKED	APPROVED DATE																														
REF																																							
CHECK SCALES																																							
If this bar does not measure 1 inch this map is not at its original scale																																							
Arch D 24" x 36"																																							
SCALE		As Noted		FILENAME c:\powertech\south dakota\dewey burdock\autocad\2008\ sections 10-15-2008\I-T\sec J-J' ore 11-11-08.dwg																																			
				1 of																																			