

**POWERTECH (USA) INC.**

Richard Blubaugh  
 5575 DTC Parkway  
 Suite #140  
 Greenwood Village, CO 80111  
 November 24, 2009

United States Nuclear Regulatory Commission Official Hearing Exhibit	
In the Matter of:	POWERTECH USA, INC. (Dewey-Burdock In Situ Uranium Recovery Facility)
	<b>ASLBP #:</b> 10-898-02-MLA-BD01
	<b>Docket #:</b> 04009075
	<b>Exhibit #:</b> APP-040-W-00-BD01
	<b>Admitted:</b> 8/19/2014
	<b>Rejected:</b>
	<b>Other:</b>
	<b>Identified:</b> 8/19/2014
	<b>Withdrawn:</b>
	<b>Stricken:</b>

Ronald Burrows  
 Project Manager  
 US Nuclear Regulatory Commission  
 Materials and Environmental  
 Management Programs  
 Mailstop T8F5  
 Washington, DC 20555-0001

Dear Ron:

Re: Action Request: Environmental Report Plates

In response to the notification of the use of "Confidential" markings on 7 plates in the Environmental Report submitted to NRC, Powertech is submitting 7 replacement plates without the confidential status.

The above was noted in the transmittal via e-mail on 24 November 2009 from Richard Blubaugh.

Powertech is forwarding the single set of plates in hard copy form as requested by NRC. Powertech agrees the plates should not be marked confidential and that they can be made available for public viewing.

Please contact me if NRC needs additional copies. Digital copies can be made available upon request.

Sincerely,

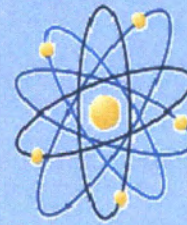
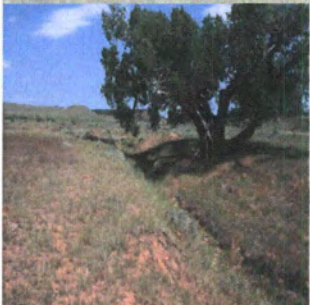
Richard Blubaugh

Enclosures (7)

Plates:

3.3-4	3.3-13
3.3-10	3.3-14
3.3-11	6.1-1
3.3-12	





**POWERTECH (USA) INC.**

**Dewey-Burdock Project  
Application for NRC  
Uranium Recovery License  
Fall River and Custer Counties,  
South Dakota  
Environmental Report**

**REPLACEMENT PLATES**

**November 2009**

*Prepared for*  
**U.S. Nuclear Regulatory Commission  
11545 Rockville Pike  
Rockville, MD 20852**

*Prepared by*  
**Powertech (USA) Inc.  
5575 DTC Parkway, Suite #140  
Greenwood Village, CO 80111  
Phone: 303-790-7528  
Facsimile: 303-790-3885**



The 7 Drawing specifically referenced in the Table of Contents have been processed into ADAMS.

These drawings can be accessed within the ADAMS package or by performing a search on the Document/Report Number.

D-77 through D-83