



POWERTECH (USA) INC.



ASLBP #: 10-898-02-MLA-BD01
Docket #: 04009075
Exhibit #: APP-021-EE-00-BD01
Admitted: 8/19/2014
Rejected:
Other:

Identified: 8/19/2014
Withdrawn:
Stricken:



W23, R3 P17: Upstream, wetland



W23, R3 P18, Downstream, wetland



POWERTECH (USA) INC.



Wpt. 35, R4 P23: Upstream, non-wetland



Wpt. 35, R4 P24: downstream, non-wetland



POWERTECH (USA) INC.



W25, R4 P1: Upstream, non-wetland



W25, R4 P2: Downstream, non-wetland



POWERTECH (USA) INC.



W26, R4 P3: Upstream, non-wetland



W26, R4 P4: Downstream, non-wetland



POWERTECH (USA) INC.



W27, R4 P11: Upstream, non-wetland



W27, R4 P12: Downstream, non-wetland



POWERTECH (USA) INC.



W28, R4 P13: Upstream, non-wetland



W28, R4 P14: Downstream, non-wetland



W29, R4 P17: Upstream, non-wetland



W29, R4 P18: Downstream, non-wetland



POWERTECH (USA) INC.



W30, R4 P19: East, non-wetland



W30, R4 P20: West, non-wetland



POWERTECH (USA) INC.



W31, R4 P21: Northeast, wetland



W31, R4 P22: East-southeast, wetland



POWERTECH (USA) INC.



W32, R4 P24: Previously mapped PEM wetland, wetland



W32, R4 P25: from the berm, wetland



POWERTECH (USA) INC.



W33, R5 P1: Upstream, wetland



W33, R5 P2: Downstream, wetland



Wpt. 56, R5 P3: Depression, non-wetland



Wpt. 56, R5 P4: Depression, non-wetland



POWERTECH (USA) INC.



Wpt. 57, R5 P5: Depression, non-wetland



Wpt. 58, R5 P8: Surface water ends



W34, R5 P9: Upstream, non-wetland



W34, R5 P10: Downstream, non-wetland



W35, R5 P11: Facing East, wetland



W35, R5 P12: Facing south, wetland



POWERTECH (USA) INC.



Wpt. 60 and 61, R5 P13: Depression, non-wetland



Wpt. 60 and 61, R5 P14: Depression, non-wetland



POWERTECH (USA) INC.



Wpt. 60 and 61, R5 P15: Depression w/ salt crusts, non-wetland



Wpt. 62, R5 P16: Depression, non-wetland



Wpt. 62, R5 P17: Depression, non-wetland



Wpt. 68, R5 P18: Upstream



POWERTECH (USA) INC.



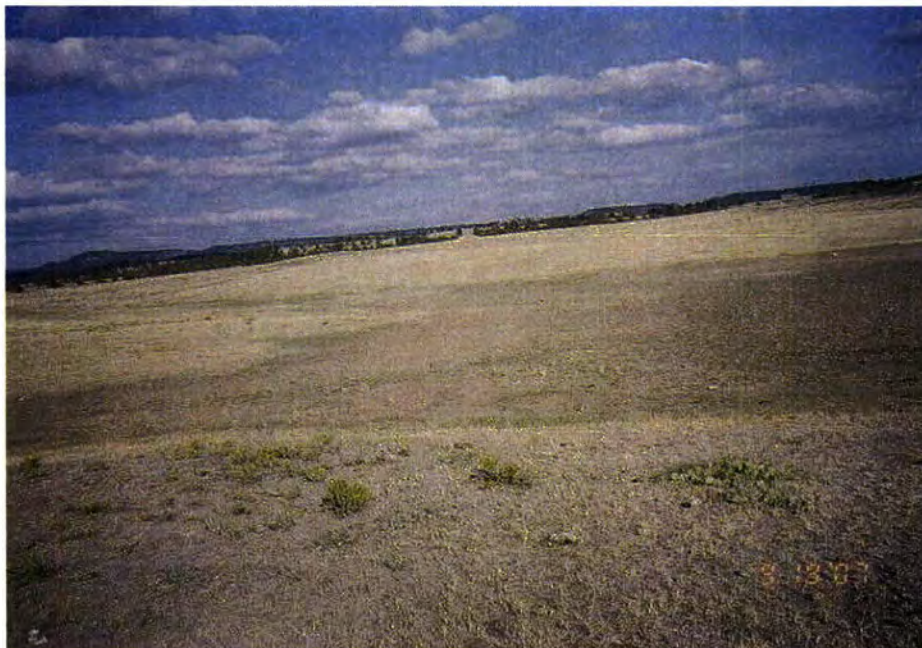
Wpt. 68, R5 P19: Downstream



W36, R5 P20: Downstream, wetland



W36, R5 P21: Upstream to stock tank, wetland



Wpt. 74, R6 P1: Depression, non-wetland



POWERTECH (USA) INC.



Wpt. 74, R6 P2: Depression, non-wetland



Wpt. 78, R6 P5: Depression, non-wetland



POWERTECH (USA) INC.



W37, R6 P6: Panoramic east to west of old mine pit, non-wetland



W37, R6 P7: Panoramic east to west of old mine pit, non-wetland



POWERTECH (USA) INC.



W37, R6 P8: Panoramic east to west of old mine pit, non-wetland



W37, R6 P9: Panoramic east to west of old mine pit, non-wetland



POWERTECH (USA) INC.



W37, R6 P10: Panoramic east to west of old mine pit, non-wetland



W38, R6 P13: East, wetland



W38, R6 P14: West, wetland



Wpt. 83, R6 P15: *Hordeum jubatum* depression, wetland



POWERTECH (USA) INC.



W39, R6 P16: Depression, wetland



W39, R6 P17: Drainage to the East, wetland



POWERTECH (USA) INC.



W40, R6 P18: Pond, wetland



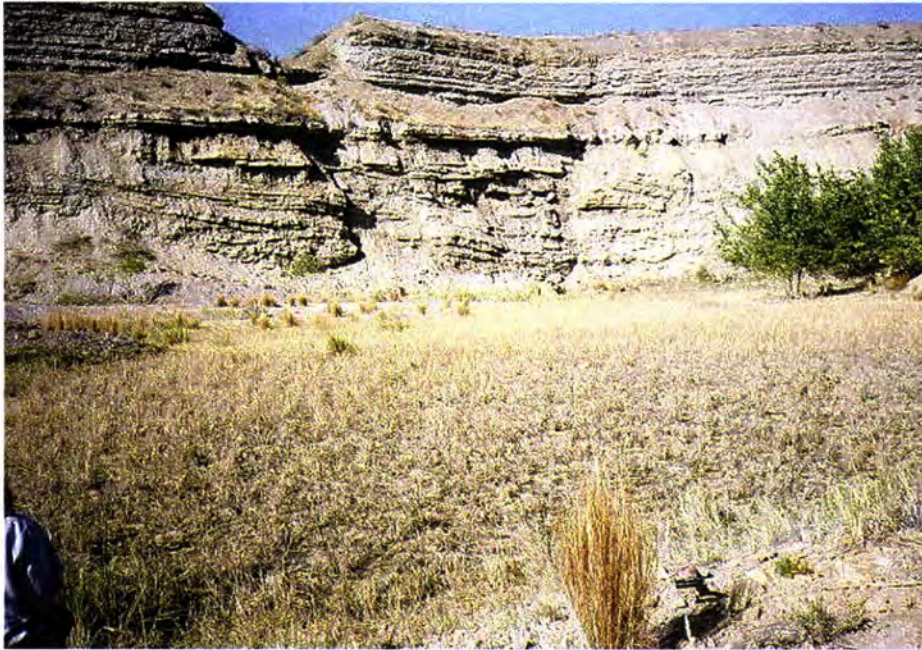
W41, R6 P19: Wetland



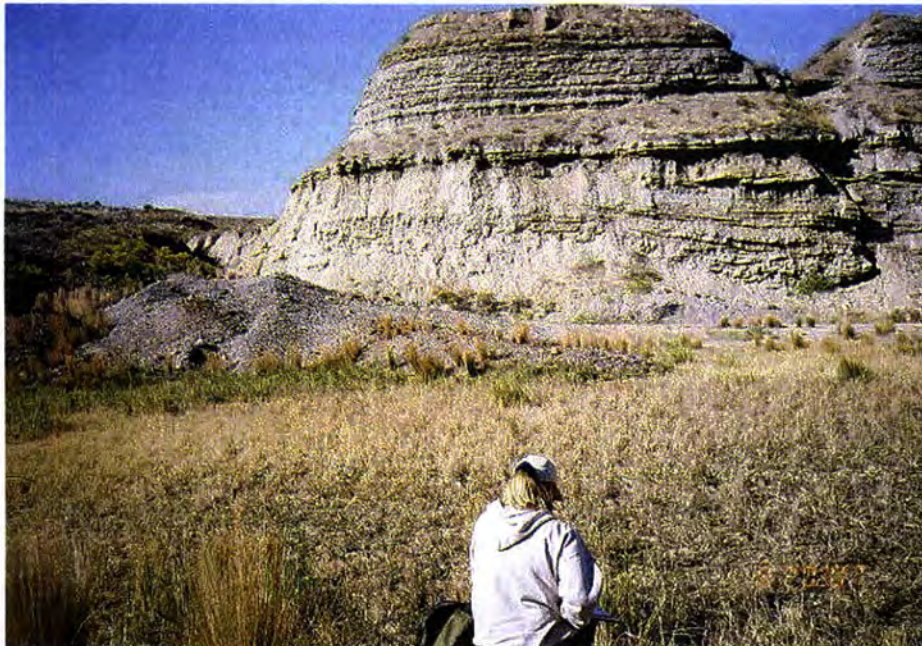
W41, R6 P20: General area, wetland



W42, R6 P22: Panoramic East to West, wetland



W42, R6 P23: Panoramic East to West, wetland



W42, R6 P24: Panoramic East to West, wetland



Wpt. 88 and 89, R7 P1: Mine Pit, non-wetland



Wpt. 88 and 89, R7 P2: Mine Pit, non-wetland



Wpt. 92, R7 P5: Mine Pit, non-wetland



Wpt. 92, R7 P6: Mine Pit, non-wetland



Wpt. 92, R7 P7: Mine Pit, non-wetland



Wpt. 94, R7 P9: Mine Pit, non-wetland



Wpt. 97, R7 P14: Depression, non-wetland



Wpt. 102, R7 P18: Depression, wetland



Wpt. 102, R7 P19: Depression, wetland



Wpt. 103, R7 P20: Mine Pit, wetland



POWERTECH (USA) INC.



Wpt. 104, R7 P21: Depression, wetland



Wpt. 104, R7 P22: Depression, wetland



POWERTECH (USA) INC.



Wpt. 104, R7 P23: Depression, wetland



W44, R7 P24: Northwest, wetland



POWERTECH (USA) INC.



W44, R8 P1: North, wetland



W44, R8 P2: East, wetland



W45, R8 P4: Upstream, wetland



W45, R8 P5: Downstream, wetland