

**POWERTECH (USA) INC.**

**Dewey-Burdock Project  
Application for NRC  
Uranium Recovery License  
Fall River and Custer Counties,  
South Dakota**

**Technical Report RAI Responses**


**June 2011**

*Prepared for*  
**U.S. Nuclear Regulatory Commission  
11545 Rockville Pike  
Rockville, MD 20852**

*Prepared by*  
**Powertech (USA) Inc.  
5575 DTC Parkway, Suite #140  
Greenwood Village, CO 80111  
Phone: 303-790-7528**

**Volume 2 of 4  
Exhibits**



		<b>United States Nuclear Regulatory Commission Official Hearing Exhibit</b> <b>In the Matter of:</b> POWERTECH USA, INC. (Dewey-Burdock In Situ Uranium Recovery Facility)
ASLRP #:	10-898-02-MLA-BD01	Identified: 8/19/2014
Docket #:	04009075	Withdrawn:
Exhibit #:	APP-016-E-00-BD01	Stricken:
Admitted:	8/19/2014	
Rejected:		
Other:		

## Table of Contents - Volume 2 of 4

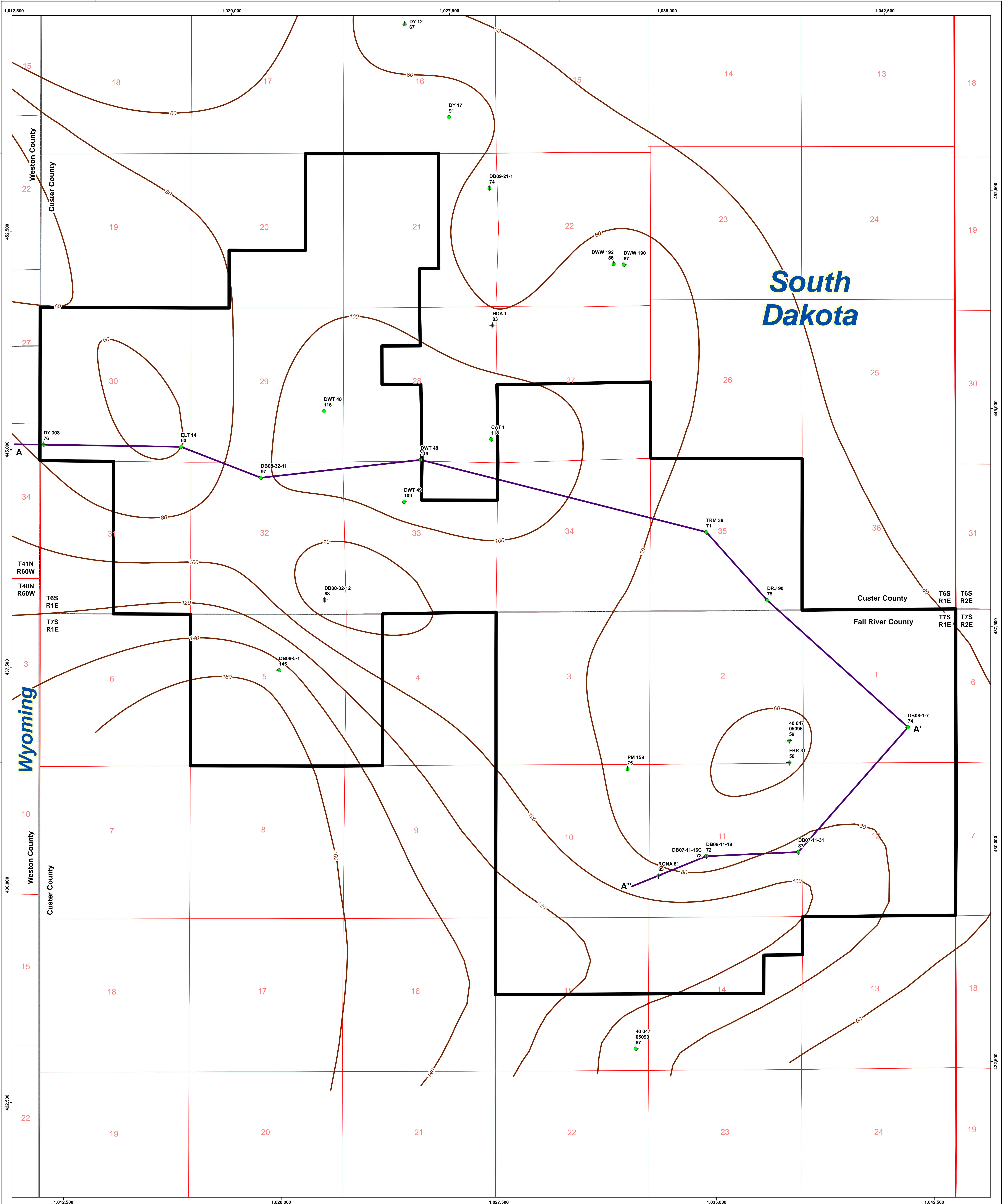
### **List of Exhibits**

2.6-1	Structure on Top of Morrison
2.6-2	Isopach Map of the Morrison Formation
2.6-3	Cross Section of the Morrison Formation
2.6-4	Geologic Map, Jewel Cave SW
2.6-5	Location of Breccia Pipes Proposed by USGS Professional Paper 763
2.6-6	Top of Fuson, Structure Contour Map, Dewey Well Field 1
2.6-7	Structure to the Top of Morrison, Burdock Area
2.6-8	Alluvium Isopach
2.7-1	Cross Section Index Map
2.7-1a	Cross Section A-A'
2.7-1b	Cross Section B-B'
2.7-1c	Cross Section C-C'
2.7-1d	Cross Section D-D'
2.7-1e	Cross Section E-E'
2.7-1f	Cross Section F-F'
2.7-1g	Cross Section G-G'
2.7-1h	Cross Section H-H'
2.7-1j	Cross Section J-J'
2.7-3	Aerial Extent of 100-year Flood and Proposed Facilities and Potential Well Fields
3.1-1	Wells within 2 km of Project Boundary
3.1-2	Proposed Facilities and Potential Initial Well Field Areas, Land Application Option
3.1-3	Proposed Facilities and Potential Initial Well Field Areas, Deep Disposal Well Option
3.1-4	Potential Well Field Areas
5.7-1	Operational Surface Water Monitoring Locations



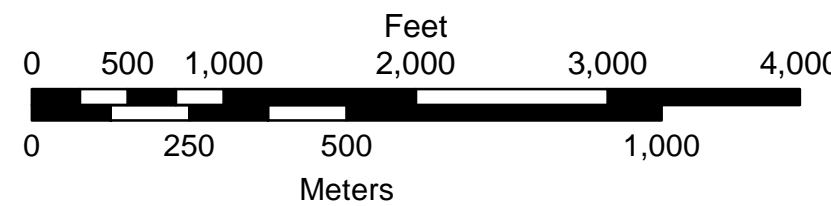
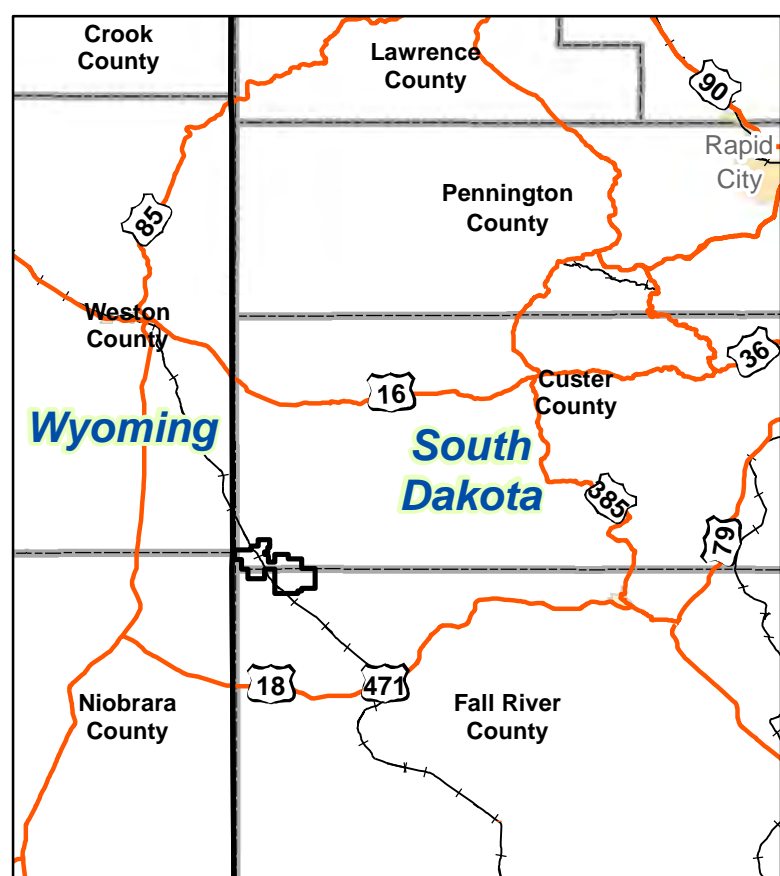







**Legend**

- Project Boundary
- Isopach Contour Line (feet)
- Cross Section Index Line
- Drill Hole Location Showing Thickness (feet)



CONSULTANT						 <b>POWERTECH (USA) INC.</b> <b>Exhibit 2.6-2</b>	
		<b>REVISIONS</b>					
		#	DRAWN	CHECKED	APPROVED	DATE	







