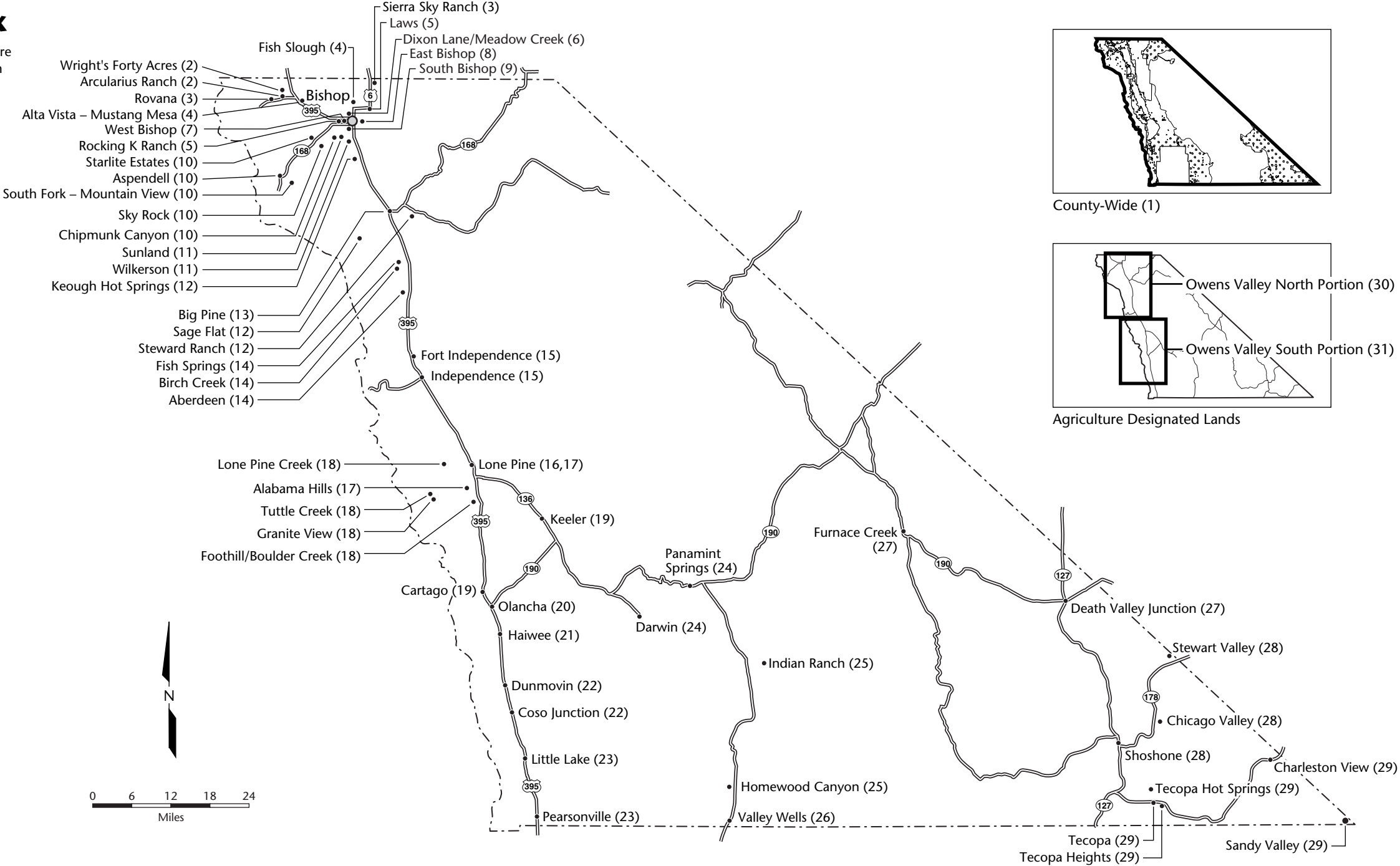


Map Index

Numbers in parentheses are diagram numbers for each community.



Inyo County  
General Plan

Land Use and Conservation/  
Open Space Elements

Index



Certificate of Adoption

I hereby certify that these elements, consisting of a text and thirty-one (31) maps are the land use and conservation/open space elements of the Inyo County General Plan that was recommended for adoption by the Inyo County Planning Commission on \_\_\_\_\_

Attest:  
\_\_\_\_\_  
Chair, Inyo County Planning Commission  
  
\_\_\_\_\_  
Charles S. Thistlethwaite, Director

Certificate of Adoption

I hereby certify that the elements consisting of a text and thirty-one (31) maps are the land use and conservation/open space elements of the Inyo County General Plan that was adopted by the Inyo County Board of Supervisors on \_\_\_\_\_

Attest:  
\_\_\_\_\_  
Chair, Inyo County Board of Supervisors  
  
\_\_\_\_\_  
Clerk of the Board

Diagrams prepared by:  Jones & Stokes  
2600 V Street  
Sacramento, CA 95818  
916/737-3000  
www.jonesandstokes.com  
  
1/16/02

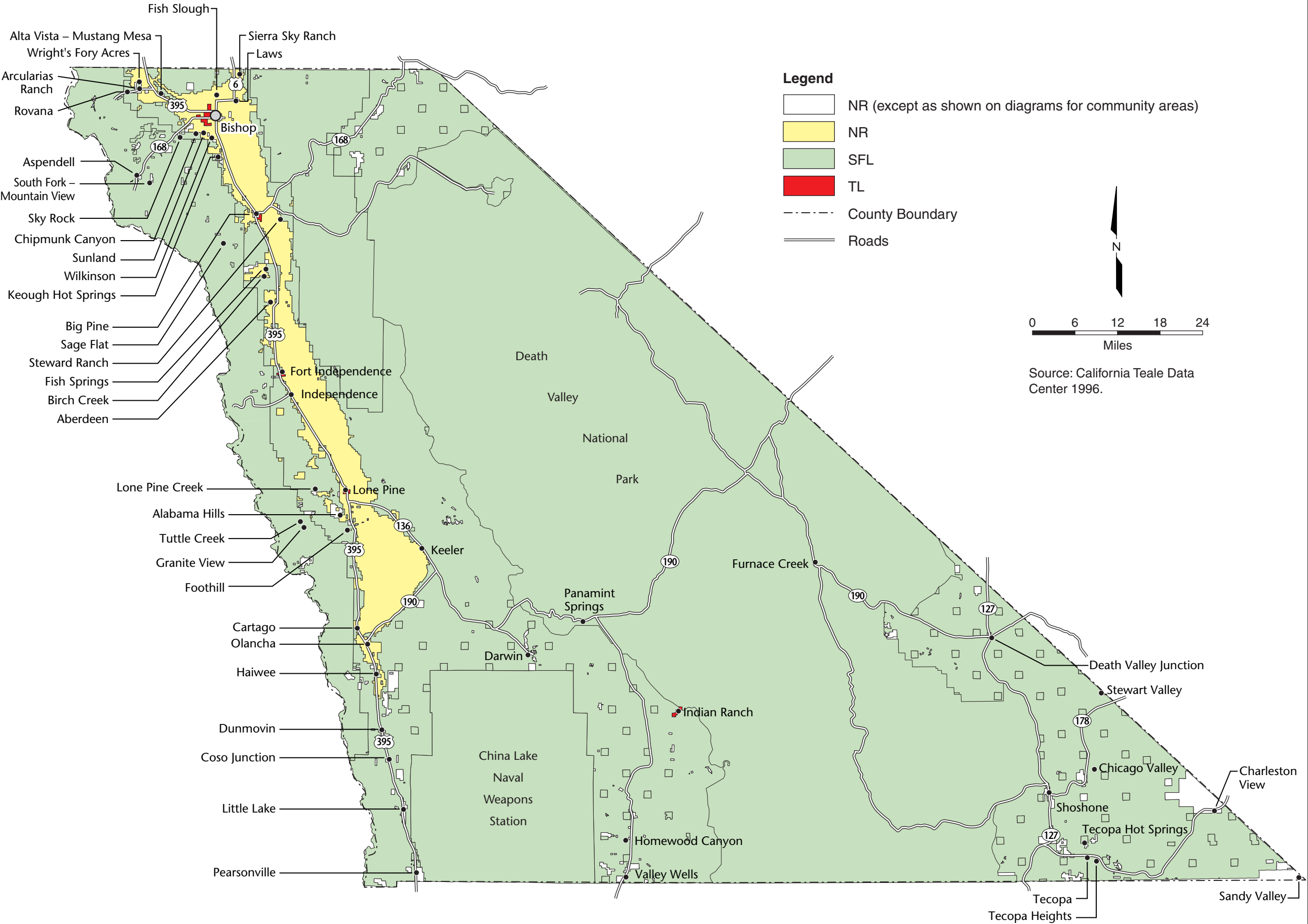
Alphabetical  
Index

The following communities are not mapped in this volume:

- Emigrant Ranger Station
- Grapevine Ranger Station
- Mt. Whitney Village
- Sandy Valley
- Scotty's Castle
- Stovepipe Wells
- Valley Crest
- Wildhorse Canyon Ranger Station

Community	Diagram No.	Community	Diagram No.	Community	Diagram No.	Community	Diagram No.	Community	Diagram No.
Aberdeen	14	Darwin	24	Homewood Canyon	25	Pearsonville/Sterling Road	23	Stewart Valley	28
Alabama Hills	17	Death Valley Junction	27	Independence	15	Rocking K Ranch	5	Sunland	11
Alta Vista - Mustang Mesa	4	Dixon Lane/Meadow Creek	6	Indian Ranch	25	Rovana	3	Tecopa	29
Arcularias Ranch	2	Dunmovin	22	Keeler	19	Sage Flat	12	Tecopa Heights	29
Aspendell	10	East Bishop	8	Keough Hot Springs	12	Sandy Valley	29	Tecopa Hot Springs	29
Big Pine	13	Fish Slough	4	Laws	5	Shoshone	28	Tuttle Creek	18
Birch Creek	14	Fish Springs	14	Little Lake	23	Sierra Sky Ranch/Rudolph Ranch	3	Valley Wells	26
Cartago	19	Foothill/Boulder Creek	18	Lone Pine (North Portion)	16	Sky Rock	10	West Bishop	7
Charleston View	29	Fort Independence	15	Lone Pine (South Portion)	17	South Bishop	9	Wilkerson	11
Chicago Valley	28	Furnace Creek	27	Lone Pine Creek	18	South Fork – Mountain View	10	Wright's Forty Acres	2
Chipmunk Canyon	10	Granite View	18	Olancha	20	Starlite Estates	10		
Coso Junction	22	Haiwee	21	Panamint Springs	24	Steward Ranch	12	Agriculture County-Wide	30,31 1

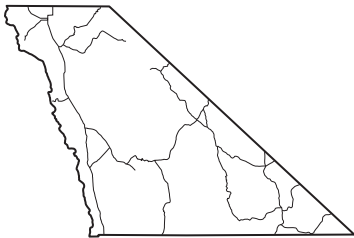
County-Wide



Inyo County  
General Plan

Land Use and Conservation/  
Open Space Elements

Diagram 1



Key to Land Use Designations

<b>RESIDENTIAL</b>	
RR	Residential Ranch
RE	Residential Estate
RRM	Residential Rural Medium Density
RRH	Residential Rural High Density
RVL	Residential Very Low Density
RL	Residential Low Density
RM	Residential Medium Density
RMH	Residential Medium-High Density
RH	Residential High Density
<b>COMMERCIAL</b>	
CBD	Central Business District
RC	Retail Commercial
HC	Heavy Commercial/Commercial Service
REC	Resort/Recreational
<b>INDUSTRIAL</b>	
LI	Light Industrial
GI	General Industrial
<b>OTHER</b>	
NH	Natural Hazards
OSR	Open Space and Recreation
PF	Public Service Facilities
A	Agriculture
NR	Natural Resources
SFL	State and Federal Lands
TL	Tribal Lands/BIA

Certificate of Adoption

I hereby certify that these elements, consisting of a text and thirty-one (31) maps are the land use and conservation/open space elements of the Inyo County General Plan that was recommended for adoption by the Inyo County Planning Commission on \_\_\_\_\_

Attest:  
Chair, Inyo County Planning Commission

Charles S. Thistlethwaite, Director

Certificate of Adoption

I hereby certify that the elements consisting of a text and thirty-one (31) maps are the land use and conservation/open space elements of the Inyo County General Plan that was adopted by the Inyo County Board of Supervisors on \_\_\_\_\_

Attest:  
Chair, Inyo County Board of Supervisors

Clerk of the Board