



POWERTECH (USA) INC.

**Dewey-Burdock Project
Application for NRC
Uranium Recovery License
Fall River and Custer Counties,
South Dakota
Technical Report**

**Plates
Volume III
Plates 2.6-13 – 5.7-1**

December 2013

Prepared for
**U.S. Nuclear Regulatory Commission
11545 Rockville Pike
Rockville, MD 20852**

Prepared by
**Powertech (USA) Inc.
5575 DTC Parkway, Suite #140
Greenwood Village, CO 80111
Phone: 303-790-7528
Facsimile: 303-790-3885**

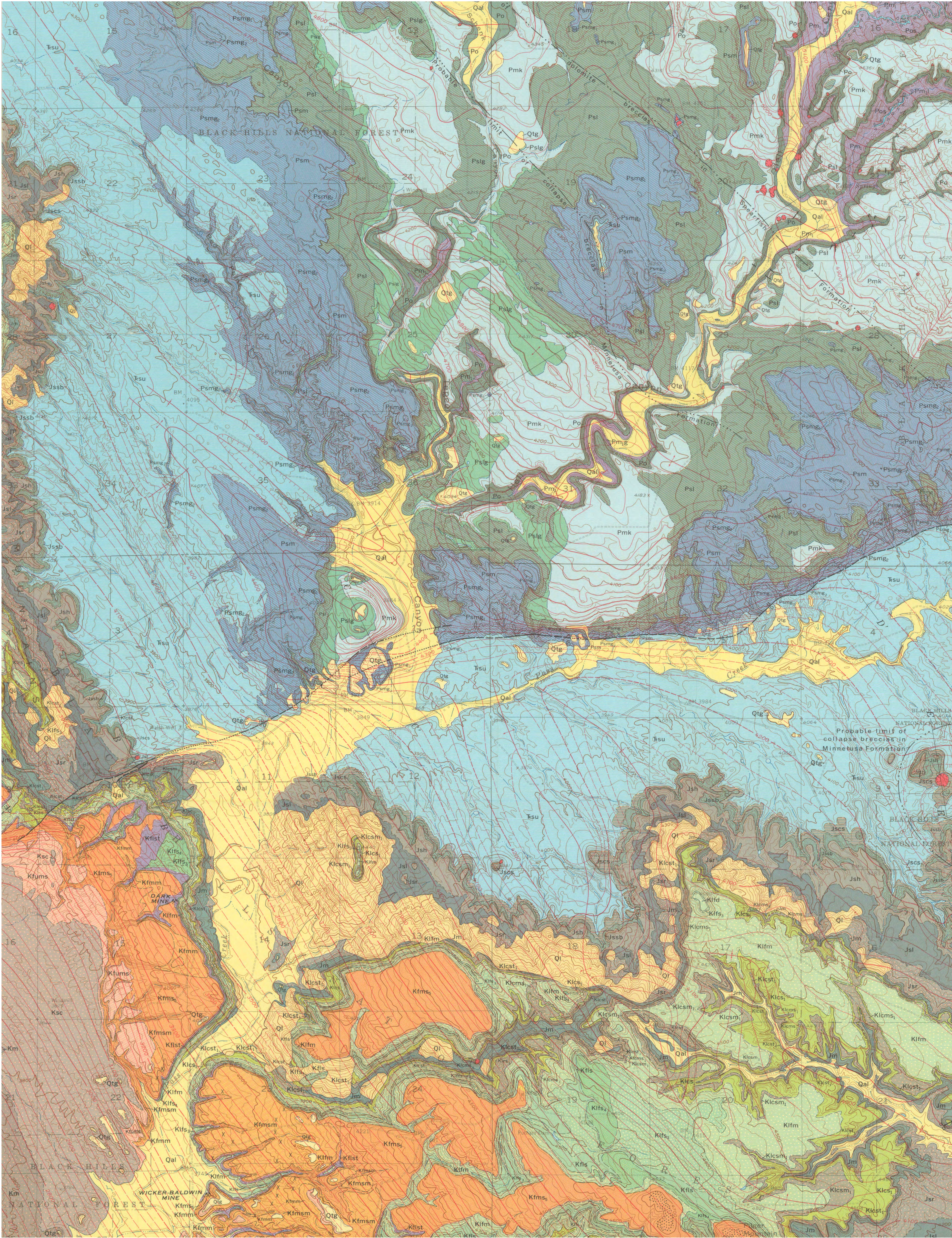
United States Nuclear Regulatory Commission Official Hearing Exhibit	
In the Matter of:	
(Dewey-Burdock In Situ Uranium Recovery Facility)	
ASLBP #: 10-898-02-MLA-BD01	Identified: 8/19/2014
Docket #: 04009075	Withdrawn:
Exhibit #: APP-015-F-00-BD01	Stricken:
Admitted: 8/19/2014	
Rejected:	
Other:	



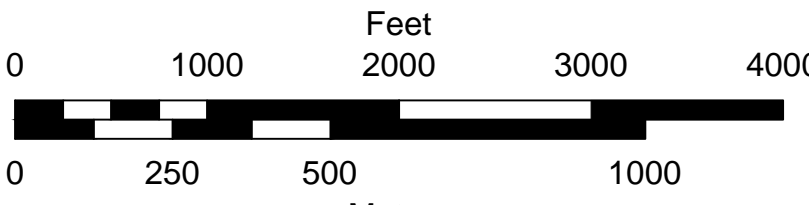
**Dewey-Burdock Project
Application for NRC
Uranium Recovery License
Fall River and Custer Counties
South Dakota
Technical Report**

LIST OF PLATES - VOLUME III

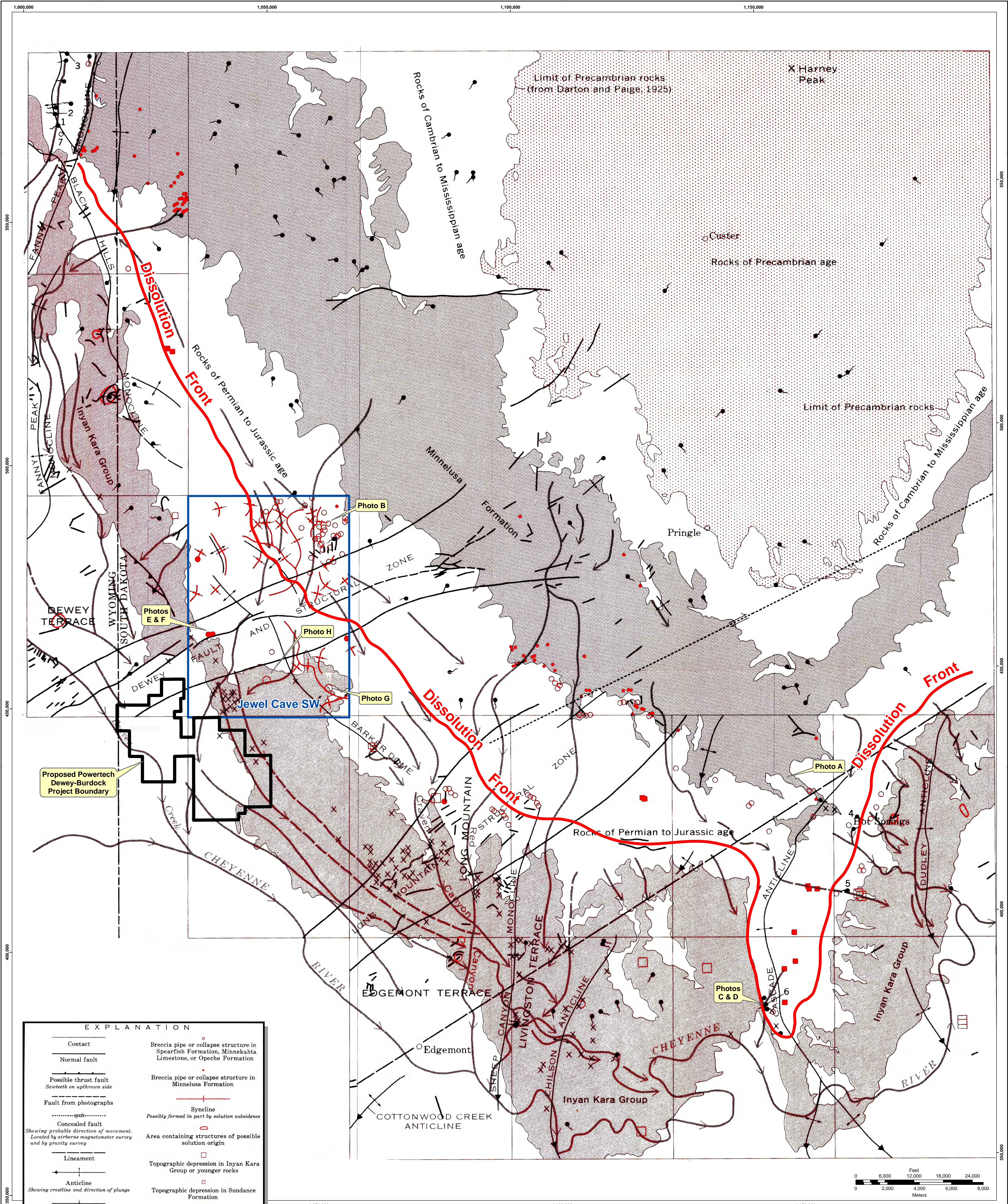
- | | |
|--------|---|
| 2.6-13 | Cross Section of the Morrison Formation |
| 2.6-14 | Geologic Map Jewel Cave SW |
| 2.6-15 | Location of Breccia Pipes Proposed by USGS Professional Paper 763 |
| 2.6-16 | Soil Map |
| 2.7-1 | Aerial Extent of 100-year Flood and Proposed Facilities and Potential Well Fields |
| 2.7-2 | Wells within 2 km of Project Boundary |
| 2.8-1 | Vegetation Communities Map |
| 2.8-2 | Wetland Assessment Map |
| 2.8-3 | Wildlife Features |
| 3.1-1 | Aquifer Exemption Boundaries Proposed in 2009 |
| 3.1-2 | Typical Well Field Layout, Dewey Area |
| 3.1-3 | Typical Well Field Layout, Burdock Area |
| 3.1-4 | Typical Well Field and Header House Layout, Dewey Area |
| 3.1-5 | Typical Well Field and Header House Layout, Burdock Area |
| 3.1-6 | Typical Header House, 100' and 70' Well Field |
| 5.7-1 | Operational Surface Water Monitoring Locations |



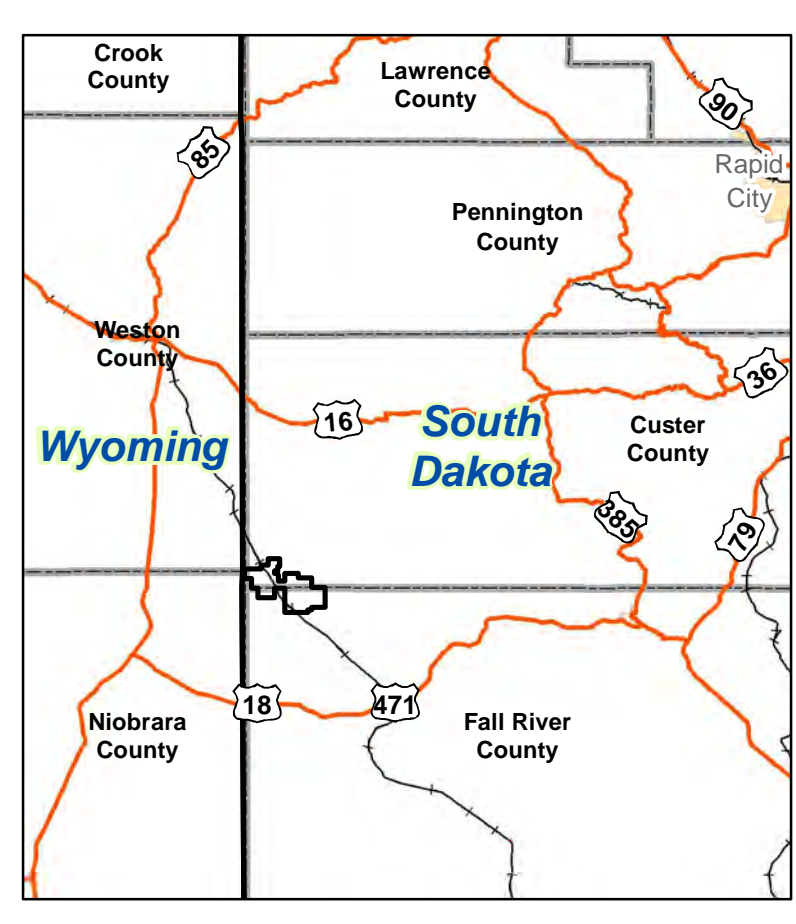
See Plate 2.6-15 for the location of this geologic map in relation to the Dewey-Burdock Project.



DRAWN		CHECKED		APPROVED		DATE
1						26-Jun-2013
2						26-Jun-2013
3						26-Jun-2013
4						26-Jun-2013
5						26-Jun-2013
6						26-Jun-2013
7						26-Jun-2013
8						26-Jun-2013
9						26-Jun-2013
10						26-Jun-2013
11						26-Jun-2013
12						26-Jun-2013
13						26-Jun-2013
14						26-Jun-2013
15						26-Jun-2013
16						26-Jun-2013
17						26-Jun-2013
18						26-Jun-2013
19						26-Jun-2013
20						26-Jun-2013
21						26-Jun-2013
22						26-Jun-2013
23						26-Jun-2013
24						26-Jun-2013
25						26-Jun-2013
26						26-Jun-2013
27						26-Jun-2013
28						26-Jun-2013
29						26-Jun-2013
30						26-Jun-2013
31						26-Jun-2013
32						26-Jun-2013
33						26-Jun-2013
34						26-Jun-2013
35						26-Jun-2013
36						26-Jun-2013
37						26-Jun-2013
38						26-Jun-2013
39						26-Jun-2013
40						26-Jun-2013
41						26-Jun-2013
42						26-Jun-2013
43						26-Jun-2013
44						26-Jun-2013
45						26-Jun-2013
46						26-Jun-2013
47						26-Jun-2013
48						26-Jun-2013
49						26-Jun-2013
50						26-Jun-2013
51						26-Jun-2013
52						26-Jun-2013
53						26-Jun-2013
54						26-Jun-2013
55						26-Jun-2013
56						26-Jun-2013
57						26-Jun-2013
58						26-Jun-2013
59						26-Jun-2013
60						26-Jun-2013
61						26-Jun-2013
62						26-Jun-2013
63						26-Jun-2013
64						26-Jun-2013
65						26-Jun-2013
66						26-Jun-2013
67						26-Jun-2013
68						26-Jun-2013
69						26-Jun-2013
70						26-Jun-2013
71						26-Jun-2013
72						26-Jun-2013
73						26-Jun-2013
74						26-Jun-2013
75						26-Jun-2013
76						26-Jun-2013
77						26-Jun-2013
78						26-Jun-2013
79						26-Jun-2013
80						26-Jun-2013
81						26-Jun-2013
82						26-Jun-2013
83						26-Jun-2013
84						26-Jun-2013
85						26-Jun-2013
86						26-Jun-2013
87						26-Jun-2013
88						26-Jun-2013
89						26-Jun-2013
90						26-Jun-2013
91						26-Jun-2013
92						26-Jun-2013
93						26-Jun-2013
94						26-Jun-2013
95						26-Jun-2013
96						26-Jun-2013
97						26-Jun-2013
98						26-Jun-2013
99						26-Jun-2013
100						26-Jun-2013
101						26-Jun-2013
102						26-Jun-2013
103						26-Jun-2013
104						26-Jun-2013
105						26-Jun-2013
106						26-Jun-2013
107						26-Jun-2013
108						26-Jun-2013
109						26-Jun-2013
110						26-Jun-2013
111						26-Jun-2013
112						26-Jun-2013
113						26-Jun-2013
114						26-Jun-2013
115						26-Jun-2013
116						26-Jun-2013
117						26-Jun-2013
118						26-Jun-2013
119						26-Jun-2013
120						26-Jun-2013
121						26-Jun-2013
122						26-Jun-2013
123						26-Jun-2013
124						26-Jun-2013
125						26-Jun-2013
126						26-Jun-2013
127						26-Jun-2013
128						26-Jun-2013
129						26-Jun-2013
130						26-Jun-2013
131						26-Jun-2013
132						26-Jun-2013
133						26-Jun-2013
134						26-Jun-2013
135						26-Jun-2013
136						26-Jun-2013
137						26-Jun-2013
138						26-Jun-2013
139						26-Jun-2013



EXPLANATION	
	Contact
	Normal fault
	Possible thrust fault <i>Sawtooth on upthrown side</i>
	Fault from photographs
	Concealed fault <i>Showing probable direction of movement. Located by airborne magnetometer survey and by gravity survey</i>
	Lineament
	Anticline <i>Showing crestline and direction of plunge</i>
	Syncline <i>Showing troughline</i>
	Monocline <i>Showing trace and direction of plunge. Dashed where indefinite</i>
	Breccia pipe or collapse structure in Inyan Kara Group or Morrison Formation
	Breccia pipe or collapse structure in Sundance Formation
	Breccia pipe or collapse structure in Spearfish Formation, Minnekahta Limestone, or Opeche Formation
	Breccia pipe or collapse structure in Minnelusa Formation
	Syncline <i>Possibly formed in part by solution subsidence</i>
	Area containing structures of possible solution origin
	Topographic depression in Inyan Kara Group or younger rocks
	Topographic depression in Sundance Formation
	Topographic depression in Spearfish Formation or Minnekahta Limestone
	Paleostream of Tertiary and (or) Quaternary age <i>Dashed where inferred</i>
	Uranium deposit <i>Some undeveloped prospects in pre-Inyan Kara rocks also shown</i>
	Spring <i>Showing locality number in table 9</i>
	Water well <i>Showing locality number in table 11</i>



Base map and legend shows scanned images taken from:
Stratigraphy of the Inyan Kara Group and Localization of Uranium Deposits, Southern Black Hills, South Dakota and Wyoming, Geological Survey Professional Paper 763, prepared by Garland B. Gott, Don E. Wolcott and C. Gilbert Bowles, US Government Printing Office, 1974, Plate 4, Map Showing Major Tectonic Elements, Minor Fault and Solution Collapse Structures, Springs, Paleostreams, and Uranium Deposits in the Southern Black Hills, South Dakota and Wyoming.

REVISIONS	
#	DATE
1	26-Jun-2013
2	26-Jun-2013
3	26-Jun-2013
4	26-Jun-2013
5	26-Jun-2013
6	26-Jun-2013
7	26-Jun-2013
8	26-Jun-2013
9	26-Jun-2013
10	26-Jun-2013
11	26-Jun-2013
12	26-Jun-2013
13	26-Jun-2013
14	26-Jun-2013
15	26-Jun-2013
16	26-Jun-2013
17	26-Jun-2013
18	26-Jun-2013
19	26-Jun-2013
20	26-Jun-2013
21	26-Jun-2013
22	26-Jun-2013
23	26-Jun-2013
24	26-Jun-2013
25	26-Jun-2013
26	26-Jun-2013
27	26-Jun-2013
28	26-Jun-2013
29	26-Jun-2013
30	26-Jun-2013
31	26-Jun-2013
32	26-Jun-2013
33	26-Jun-2013
34	26-Jun-2013
35	26-Jun-2013
36	26-Jun-2013
37	26-Jun-2013
38	26-Jun-2013
39	26-Jun-2013
40	26-Jun-2013
41	26-Jun-2013
42	26-Jun-2013
43	26-Jun-2013
44	26-Jun-2013
45	26-Jun-2013
46	26-Jun-2013
47	26-Jun-2013
48	26-Jun-2013
49	26-Jun-2013
50	26-Jun-2013
51	26-Jun-2013
52	26-Jun-2013
53	26-Jun-2013
54	26-Jun-2013
55	26-Jun-2013
56	26-Jun-2013
57	26-Jun-2013
58	26-Jun-2013
59	26-Jun-2013
60	26-Jun-2013
61	26-Jun-2013
62	26-Jun-2013
63	26-Jun-2013
64	26-Jun-2013
65	26-Jun-2013
66	26-Jun-2013
67	26-Jun-2013
68	26-Jun-2013
69	26-Jun-2013
70	26-Jun-2013
71	26-Jun-2013
72	26-Jun-2013
73	26-Jun-2013
74	26-Jun-2013
75	26-Jun-2013
76	26-Jun-2013
77	26-Jun-2013
78	26-Jun-2013
79	26-Jun-2013
80	26-Jun-2013
81	26-Jun-2013
82	26-Jun-2013
83	26-Jun-2013
84	26-Jun-2013
85	26-Jun-2013
86	26-Jun-2013
87	26-Jun-2013
88	26-Jun-2013
89	26-Jun-2013
90	26-Jun-2013
91	26-Jun-2013
92	26-Jun-2013
93	26-Jun-2013
94	26-Jun-2013
95	26-Jun-2013
96	26-Jun-2013
97	26-Jun-2013
98	26-Jun-2013
99	26-Jun-2013
100	26-Jun-2013

POWERTECH (USA) INC.
Plate 2.6-15
Location of Breccia Pipes
Proposed by
USGS Professional Paper 763
Dewey-Burdock Project