

APPENDIX B3

DEBRIS INVENTORY

APPENDIX B3.1
DEBRIS INVENTORY TABLE

Table B3.1
MINE SITE DEBRIS INVENTORY TABLE

ID Number	Description of Debris	Quantity	Easting ¹	Northing ¹	Composition	Major Compositon	Fixed	Estimated Total Volume (cu. ft) ²	Compressible	Biodegradable	Small	Activity Required Prior to Disposal
1	Vehicle Tires	10	2522968.8	1695930.9	Rubber	Rubber	No	70				
2	55-gal drum	1	2522562.4	1695790.6	Metal	Metal	No	7.3	X			Cut
3	10-inch Pipe	1	2522390.6	1695727.8	Metal	Metal	Yes	1			X	Flatten
4	4- 6x6 concrete pad w metal clad	1	2521699.8	1695628.3	Wood/Metal/Concrete	Concrete	Yes	72				Break Up
4	Concrete pad in shed debris (6 ft x 6 ft)	1	2521699.8	1695628.3	Concrete/Metal	Concrete	Yes	72				Break Up
5	Shed-Building Foundation Wall (3.5 ft high x 8 in thick)	1	2521678.2	1695602.7	Concrete	Concrete	Yes	420				Break Up
6	Concrete Tank pad (8 ft x 18 ft)	1	2521686.8	1695624.1	Concrete	Concrete	Yes	144				Break Up
7	Shed Building (10 ft x 20 ft)	1	2521679.7	1695620.1	Wood/Metal	Metal	Yes	132	X	Partially		Flatten
8	Anchored metal post	1	2521710.3	1695678.8	Metal	Metal	Yes	--			X	
9	3-inch Metal Pipe (10 ft exposed)	1	2521676.7	1695677.7	Metal	Metal	Yes	--			X	
10	12-inch Plastic Pipe (4 ft exposed)	1	2521688.5	1695690.8	Plastic	Plastic	Yes	4	X			Flatten
11	Pipe & Metal Debris		2521754.7	1695710.8	Metal/Plastic	Plastic	No	--			X	
12	3-ft metal pipe (5 ft exposed)	1	2521948.6	1695705	Metal	Metal	Yes	42	X			Cut
13	4-in Plastic Pipe (3 ft exposed)	1	2521726.4	1695503	Plastic	Plastic	No	--			X	Flatten
14	8-in perforated metal pipe (20 ft long)	1	2521689.1	1695435.3	Metal	Metal	Yes	8	X			Cut
15	0.5-in Metal Rod (4-ft exposed)	1	2521729	1695491.7	Metal	Metal	No	--			X	
16	Wood Debris (3-ft)	3?	2521699.5	1695493.5	Wood	Wood	No	12		X		
17	Perforated Metal Pipe and Screen (18in x 18in x 10ft)	1	2521657.7	1695499.4	Metal	Metal	Yes	33	x			Cut
18	Concrete Spillway (18 ft x 12 ft)	1	2521579.7	1695580.6	Concrete/Metal	Concrete	Yes	460				Break Up
19	Bridge (20ft x 20ft), Bridge Post, Bridge Abutment and Girder	1	2521583.7	1695630	Concrete/Metal	Concrete	Yes	1520				Break Up
20	10-in Steel Pipe	1	2521624.5	1695652.2	Metal	Metal	Yes	3	X			Cut
21	Power Pole	1	2521481.3	1695611.2	Wood/Metal/Plastic	Wood	Yes	31		X		Cut
22	Borehole Marker - 2.5-in Steel Pipe (3.5ft stickup)	1	2521370.9	1695503.9	Metal	Metal	Yes	2				
23	3-in Steel Pipe (3ft stickup)	1	2521397.1	1695389.9	Metal	Metal	Yes	--	X		X	Flatten
24	Power Pole	1	2521392	1695380.4	Wood/Metal	Wood	Yes	31		X		Cut
25	4-in Steel Pipe (20 ft exposed)	1	2521379.2	1695361.1	Metal	Metal	Yes	2				Flatten
26	1-in Steel Pipe (6-ft stickup)	1	2521333.2	1695327.6	Metal	Metal	Yes	--			X	
27	Concrete Debris (12in x 12in x 5ft)	1	2521325.3	1695325.2	Concrete	Concrete	No?	--			X	
28	Pipe Debris	3	2521321.8	1695355.7	Metal/Plastic	Metal	No/Yes	--			X	
29	Borehole Marker - 3.5-in Steel Pipe (18-in stickup)	1	2521190	1695339.1	Metal	Metal	Yes	2				
30	Power Pole	1	2521214.8	1695230.6	Wood/Metal	Wood	Yes	31		X		Cut
31	Borehole Marker - 3.5-in Steel Pipe (18-in stickup)	1	2521209.6	1695226	Metal	Metal	Yes	2				
32	3-ft Metal Culvert (35ft exposed)	2	2521100.5	1695119.6	Metal	Metal	Yes	304	X			Flatten
33	4-in Metal Pipe Inside Culvert (40 ft exposed)	1	2521107.2	1695111.8	Metal	Metal	Yes	5	X			Flatten
34	3-in Metal Pipe (6ft exposed)	1	2521114.6	1695093.5	Metal	Metal	Yes	--			X	
35	3-in Metal Pipe (6ft exposed)	1	2521035	1695084.8	Metal	Metal	Yes	3				
36	Power Pole	1	2521029.9	1695078.8	Metal/Wood/Plastic	Wood	Yes	31		X		Cut
37	NO POINT					#N/A						

Table B3.1
MINE SITE DEBRIS INVENTORY TABLE

ID Number	Description of Debris	Quantity	Easting ¹	Northing ¹	Composition	Major Compositon	Fixed	Estimated Total Volume (cu. ft) ²	Compressible	Biodegradable	Small	Activity Required Prior to Disposal
38	NO POINT					#N/A						
39	4-ft diam Metal Pipe/Culvert (20 ft)	1	2521013.1	1694886.3	Metal	Metal	Yes	126	X			Flatten
40	Power Pole	1	2521029.4	1694975.8	Wood/Metal	Wood	Yes	31		X		Cut
41	Small Metal Debris		2520960.3	1694958.9	Metal/Plastic/Wood	Wood	No	--		X	X	
42	6-in Metal Pipe, 15-ft long	1	2520873.8	1694946.7	Metal	Metal	No	3.5	X			Flatten
43	Borehole Marker - 3-in Metal Post, 2.5-ft tall	1	2520781.9	1694903.9	Metal	Metal	Yes	2				
44	Small Metal/Plastic Pipes	1	2520767.4	1694876.3	Metal/Plastic	Metal	No	--			X	
45	Metal Pipe Holder Sheet, 2.5ft x 1ft	1	2520734.2	1694853.7	Metal	Metal	No	--			X	
46	Twisted Metal Pipe and Sheeting, 10-ft Pipe		2520677.3	1694820.8	Metal	Metal	No	10				
47	Fixed Metal Debris, Sheets, Less than 10ft^2	1	2520637.5	1694803.8	Metal	Metal	No	5				
48	0.5-in Metal Pipe, 10-ft long	1	2520598.1	1694782.7	Metal	Metal	No	--			X	
49	1-in Metal Pipe, 5-ft	1	2520420.4	1694753	Metal	Metal	Yes	--			X	
50	1-in Plastic Coated Conduit Pipe, 3-ft long	1	2520387	1694742.5	Metal/Plastic	Plastic	Yes	--			X	
51	5-ft diam Metal Culverts (66ft Long)	2	2520316.1	1694723.3	Metal	Metal	Yes	1300	X			Flatten
52	Cement block with rebar (3.5ft x 2ft)	1	2520065.8	1694757.2	Metal/Concrete	Concrete	No	2				
53	1-ft Metal Anchor, upright	1	2520060	1694756.4	Metal	Metal	Yes	--			X	
54	5-ft Metal Rod, upright	1	2520044.1	1694748.6	Metal	Metal	Yes	--			X	
55	4-in Metal/Plastic Hose, 10-ft exposed	1	2520078.8	1694853.1	Metal/Plastic	Plastic	Yes	2	X			
56	0.5-in Metal Cable	1	2520068	1694830.9	Metal	Metal	Yes	3				
57	0.5-in Metal Pipe	1	2520064.8	1694835.6	Metal	Metal	Yes	--			X	
58	Metal Debris/Vent Cover	1	2520022.6	1694812.3	Metal	Metal	Yes	--			X	
59	0.5-in Metal Pipe (5-ft exposed)	1	2520004.2	1694823.6	Metal	Metal	Yes	--			X	
60	Metal Debris, Fan, Electrical		2520000.4	1694803	Metal	Metal	No	4				
61	1-ft Concrete Chunk (Partially buried)	1	2519991.8	1694790.1	Concrete	Concrete	Yes	--			X	
62	Electrical Debris + Control Panel		2519996.8	1694719.9	Metal/Plastic	Metal	No	5	X			
63	Metal Burial Area, Pipes/Cables/Sheeting/Plastic Sheeting/Taillight		2520005.6	1694651.6	Metal/Plastic	Metal	Yes	20				
64	Metal Grates + Debris in Wash		2520052.3	1694614.3	Metal/Plastic	Metal	Yes	--			X	
65	Plastic Pipe (1-ft exposed)	1	2520100.6	1694644.6	Plastic	Plastic	Yes	--			X	
66	1.5-in Red Hose (4-ft exposed)	1	2520128	1694667.7	Plastic/Metal	Plastic	Yes	--			X	
67	1-in Hose, 4-ft long	1	2520158.6	1694671.6	Plastic/Metal	Plastic	No	--			X	
68	Metal Debris		2520180	1694685.6	Metal	Metal	No	--			X	
69	Borehole Marker - 3-in Metal Pipe (3-ft exposed)	1	2520161.7	1694565.6	Metal	Metal	Yes	2				
70	0.25-in Metal Wire Across Channel (30-ft+ exposed)	1	2520180.1	1694558.6	Metal	Metal	Yes	--			X	
71	0.5-in Metal Rod (6-ft exposed)	1	2520204	1694581.9	Metal	Metal	Yes	--			X	
72	Electrical Debris		2520326.2	1694601.9	Metal/Plastic	Metal	No	--			X	
73	Vent Casing Supports (30ft x 15ft x 10ft) (pad is 30 ft)	1	2520448.4	1694552.7	Concrete	Concrete	Yes	2050				Break Up
74	10-ft Diam Support w/ Vent Hole 7 Cover	1	2520431.5	1694540.7	Concrete/Metal	Concrete	Yes	N/A				
75	Plastic Wrapped Metal Conduit, 1-in (3-ft exposed)	1	2520436.3	1694531.2	Metal/Plastic	Plastic	Yes	--			X	
76	Concrete Pad (20ft x 30ft x 1.5ft)	1	2520377.5	1694436.1	Concrete	Concrete	Yes	900				Break Up

Table B3.1
MINE SITE DEBRIS INVENTORY TABLE

ID Number	Description of Debris	Quantity	Easting ¹	Northing ¹	Composition	Major Compositon	Fixed	Estimated Total Volume (cu. ft) ²	Compressible	Biodegradable	Small	Activity Required Prior to Disposal
77	Metal Pipes, 1 plastic clad, 5-ft long	2	2520379	1694448.3	Metal/Plastic	Metal	No	3	X			Flatten
78	Buried Concrete Pad (>6ft x 10ft)	1	2520329.3	1694390.1	Concrete	Concrete	Yes	>60				Break Up
79	2-in Diam Metal Pipes (1ft & 1.5ft exposed)	2	2520275.2	1694375.9	Metal	Metal	Yes	--	X		X	Flatten
80	2-in Metal Pipe (4ft exposed)	1	2520339.7	1694308.3	Metal	Metal	Yes	--	X		X	Flatten
81	1-in Poly pipe (30-40ft exposed)		2520339.2	1694283.8	Plastic	Plastic	Yes	5				
82	2-in Metal Pipe, 1-in Poly Pipe in channel	2	2520309	1694147	Metal/Plastic	Metal	Yes	20	X			Flatten
83	Metal Barrels	3	2520298.4	1694034.2	Metal	Metal	No	27	X			Flatten
84	Metal Grate	1	2520308.2	1694033.7	Metal	Metal	Yes	2				
85	3-ft Wooden Spool (Hoist rope?)	1	2520310.1	1694044.7	Wood	Wood	Yes	30		X		
86	Wooden Frame (4ft x 2ft)	1	2520307.8	1694038.3	Wood	Wood	Yes	8		X		
87	Concrete Anchor (10ft x 2.5ft x 2.5ft)	1	2520337.2	1694058.2	Concrete	Concrete	No	63				Break Up
88	4-ft PVC Pipe (5-ft exposed)	1	2520389.1	1694041	Plastic	Plastic	Yes	24	X			Flatten
89	Scattered Sheet Metal Debris on Hillside		2520371.4	1694071.6	Metal	Metal	No	2				
90	2-in PVC Pipe, Metal Wrench	2	2520408.1	1694167.6	Metal/Plastic	Plastic	No	--	X		X	Flatten
91	1.5-in Metal Rope Cable, (30ft+ Exposed)	1	2520396.1	1694203.4	Metal	Metal	Yes	2				
92	2-in Metal Pipe (20ft exposed)	1	2520362	1694181.9	Metal/Plastic	Metal	Yes	--	X		X	Flatten
93	Metal Anchors, 2-3ft long	2	2520335.5	1694216.1	Metal	Metal	Yes	--	X		X	Flatten
94	Concrete Slab (8ft x 5 ft)	1	2520497.1	1694366	Concrete	Concrete	No	60				Break Up
95	4-in Metal Pipe (1-ft exposed)	1	2520499.5	1694378.6	Metal	Metal	Yes	--	X		X	Flatten
96	Metal Debris - Sheets/Cable/1-in Pipe		2520533.7	1694455.9	Metal	Metal	No	--			X	
97	2-in Metal Pipe (20-30ft)	1	2520699.1	1694569.9	Metal	Metal	No	--	X		X	Flatten
98	Scattered Metal Sheeting	10	2520741.8	1694531.8	Metal	Metal	No	20	X			Flatten
99	Wood Boards (1ft x 12ft x 8ft)	2	2520754.8	1694531.7	Wood	Wood	No	200		X		
100	4-ft Metal Culvert	1	2520791.7	1694495.3	Metal	Metal	Yes	628	X			Flatten
101	Metal Sheeting	1	2520820.1	1694661	Metal	Metal	No	--			X	
102	1.5-in Metal Pipe (2ft exposed)	1	2520841	1694743.9	Metal	Metal	Yes	--			X	
103	Metal T- Posts, 6ft tall	8	2520958.7	1694732.1	Metal	Metal	Yes	--			X	
104	Concrete Foundation (20ft x 20ft) (Flock House)	1	2521204.5	1694808.4	Concrete/Metal	Concrete	Yes	560				Break Up
105	Concrete/Wood Foundation (20ft x 20ft)	1	2521173.2	1694798.8	Concrete/Wood	Wood	Yes	400		Partially		Break Up
106	4-in Metal Pipes (3 ft exposed) + Metal Debris	2	2521195.8	1694814.8	Metal	Metal	yes	--			X	Flatten
107	Concrete Pad, Partially Buried (>5ft x 3ft)	1	2521210.8	1694824.1	Concrete	Concrete	Yes	>22.5				Break Up
108	Buried Concrete Pad and Debris		2521213.2	1694836.2	Concrete/Plastic	Concrete	Yes	??				Break Up
109	Pipe Rack Supports/Anchors, (1.5ft exposed)	6+	2521275.5	1694855.1	Metal	Metal	Yes	5				
110	Large Debris Pile		2521337	1694910.2	Metal/Wood/Tires	Metal	No	44000	X			Flatten
111	Concrete pad (60ft x 60ft) Metal and Wood Debris	1	2521372.9	1694945.4	Concrete	Concrete	Yes	50000	X			Break Up
112	Wood and Tire Pile (150ft x 60ft)	1	2521452.2	1694990.8	Wood/Rubber	Wood	No	67500	X			Cut
113	Concrete Debris and Rock Rubble Pile (150ft x 100ft)		2521551.7	1695068.4	Concrete/Rock	Concrete	No	112500				Break Up
114	TPH Soil Piles	2	2521697.8	1695175.2	Soil	Soil	No	175700				
115	1.5-ft Metal Corrugated Pipe/Culvert	1	2521716.3	1695229.4	Metal	Metal	Yes	44	X			Flatten
116	1.5-ft Poly Pipe (6ft exposed)	1	2521695.5	1695226.7	Plastic	Plastic	Yes	5	X			Flatten
117	0.5-in Metal Rope Cable	1	2521702.6	1695224.8	Metal	Metal	Yes	--			X	
118	Metal Debris - Sheets/T-Posts/Cable		2521693.9	1695208.8	Metal	Metal	Yes	--			X	

Table B3.1 MINE SITE DEBRIS INVENTORY TABLE												
ID Number	Description of Debris	Quantity	Easting ¹	Northing ¹	Composition	Major Compositon	Fixed	Estimated Total Volume (cu. ft) ²	Compressible	Biodegradable	Small	Activity Required Prior to Disposal
119	Metal and Wood Debris (2x4s)		2521469.6	1695047.4	Metal/Wood	Metal	Yes	5		Partially		
120	Metal Debris (Pipes/Cable/Chain-link)		2521320.7	1695004.3	Metal	Metal	No	5				
121	4-in Metal Pipes (30ft+)	2	2521307.3	1694997.4	Metal	Metal	Yes	12				Flatten
122	4-in Metal Pipes (3) + Metal Rope Cable	3	2521283.8	1694979.5	Metal	Metal	Yes	5				Flatten
123	Concrete Foundation (6ft x 38ft x 2ft) (Weir)	1	2521184.2	1694986.9	Concrete	Concrete	Yes	500				Break Up
124	4-ft Metal Culverts, 15ft Long	2	2521172.2	1695018.1	Metal	Metal	Yes	188	X			Flatten
125	4-ft Metal Culvert, 25 ft Long	1	2521007.7	1694891.9	Metal	Metal	Yes	157	X			Flatten
126	5-ft Metal Culvert Pipe, 50 ft	1	2519707.3	1694627.9	Metal	Metal	Yes	490	X			Flatten
127	5-ft Metal Culvert Pipe, 22 ft	1	2519625.1	1694468.5	Metal	Metal	Yes	216	X			Flatten
128	Corrugated 2-ft Metal Pipe, 20ft+	1	2519516.4	1694796.5	Metal	Metal	Yes	35	X			Flatten
129	8-in Metal Pipes (15-20ft exposed)	2	2519508.8	1694781.6	Metal	Metal	Yes	20	X			Flatten
130	~27 Above Ground Anchors/Supports See Below	27	2520615.3	1695230.3	Metal/Concrete	Concrete	Yes					
131	Power Pole	1	2520657.9	1695127.7	Wood/Metal/Plastic	Wood	Yes	31		X		Cut
132	Power Pole	1	2520670.4	1695119.7	Wood/Metal/Plastic	Wood	Yes	31		X		Cut
133	Power Pole + Small electrical debris	1	2520710.9	1695103.9	Wood/Metal/Plastic	Wood	Yes	31		X		Cut
132B	Power Pole	1	2520772.7	1695084.6	Wood/Metal/Plastic	Wood	Yes	31		X		Cut
134	2-in poly pipe, (~30-ft exposed)	2	2520761.8	1695095.4	Plastic	Plastic	Yes	--	X		X	Flatten
135	Concrete pad (10 ft x 12ft)	1	2520715.5	1695098.6	Concrete	Concrete	Yes	180				Break Up
136	Concrete pad (3ft x 5ft)	1	2520713.9	1695111.2	Concrete	Concrete	Yes	23				Break Up
137	1-ft diameter concrete pads w 3-in pipe exposed	6+	2520713.8	1695089.8	Concrete/Metal	Concrete	Yes	>42				Break Up
138	Concrete pad (3ft x 5ft)	1	2520688.1	1695104.3	Concrete	Concrete	Yes	23				Break Up
139	Concrete pad (10ft x 12ft)	1	2520684.4	1695116.7	Concrete	Concrete	Yes	180				Break Up
140	Concrete pad (6ft x 12ft) with PVC pipe	1	2520677.7	1695145.2	Concrete/Plastic	Concrete	Yes	108				Break Up
140B	Concrete pad (3ft x 18ft) with chain-link and PVC	1	2520688	1695158.4	Concrete/Plastic/Metal	Concrete	Yes	81				Break Up
140C	Concrete pad (15ft x 12ft)	1	2520696.5	1695149.3	Concrete	Concrete	Yes	270				Break Up
140D	Concrete pad (12ft x 12ft)	1	2520703	1695159.6	Concrete	Concrete	Yes	216				Break Up
141	2-in PVC Pipe with Electrical Cable	1	2520712.2	1695130.2	Plastic/Metal	Plastic	Yes	--			X	
142	Concrete Debris, ~10ft x 10ft pile	1	2520780.8	1695173.1	Concrete	Concrete	Yes	150				
143	Borehole Marker - 2.5-in Steel Pipe (3.5ft stickup)	1	2520839.8	1695200.7	Metal	Metal	Yes	2				
144	6-in Metal Pipe	1	2520867	1695239.5	Metal	Metal	Yes	7	X			Flatten
145	1-in Metal Rope Cable	1	2520789.9	1695285.3	Metal	Metal	Yes	--			X	
146	Concrete Pad (30ft x 30ft)	1	2520762	1695246.2	Concrete	Concrete	Yes	1350				Break Up
147	Concrete Anchor (12ft x 2ft x 2.5ft)	1	2520686.8	1695235.1	Concrete	Concrete	Yes	120				Break Up
148	Concrete Anchor (12ft x 2ft x 2.5ft)	1	2520682.1	1695229.5	Concrete	Concrete	Yes	120				Break Up
149	Concrete (12ft x 2ft x ?)	1	2520646.1	1695259.6	Concrete	Concrete	Yes	48				Break Up
150	Concrete pad (1ft x ?) with Metal Pipe	1	2520647.9	1695285.9	Concrete/Metal	Concrete	Yes	2				
151	Concrete (anchors?) (1ft x 3ft x 10ft)	4	2520599.9	1695250.9	Concrete/Metal	Concrete	Yes	200				Break Up
152	Concrete & Wood (2ft x 2ft x 3ft)	1	2520605.7	1695250.8	Concrete/Wood	Concrete	Yes	12		Partially		Break Up
153	Concrete (anchor?) + Wood (6ft x 10ft x 4ft)	1	2520591.2	1695241.8	Concrete/Wood/Metal	Concrete	Yes	360				Break Up
154	Concrete Cross (12ft x 15ft x 2.5ft)	2	2520572.2	1695227.3	Concrete	Concrete	Yes	250				Break Up
155	Red Concrete Barrier (2ft x 1ft x??)	1	2520577.7	1695233	Concrete	Concrete	Yes	312				Break Up
156	Hexagon Pad with I-Beams (Vent Hole 3)	1	2520561.8	1695232.4	Concrete/Metal	Concrete	Yes	NA				
157	6-ft tall pyramid anchors	2	2520568.5	1695227.3	Concrete	Concrete	Yes	572				Break Up

Table B3.1
MINE SITE DEBRIS INVENTORY TABLE

ID Number	Description of Debris	Quantity	Easting ¹	Northing ¹	Composition	Major Compositon	Fixed	Estimated Total Volume (cu. ft) ²	Compressible	Biodegradable	Small	Activity Required Prior to Disposal
158	5-ft Diam Metal/Concrete Anchors	7	2520589.2	1695201.5	Concrete/Metal	Concrete	Yes	700				?
159	Concrete (anchor?) (5ft x 5ft x 10ft)	1	2520612.5	1695183.5	Concrete	Concrete	Yes	350				Break Up
160	Concrete (anchor?) (10ft x 12ft x 10ft) (Cradle)	2	2520593.3	1695186	Concrete	Concrete	Yes	1880				Break Up
161	Concrete (1.5ft x 1.5ft)	2	2520177.5	1695516.1	Concrete	Concrete	Yes	8				
162	Concrete Pad (30ft x 60ft) with Vent Hole 8	1	2520166.8	1695544.5	Concrete	Concrete	Yes	1929				Break Up
163	Vent Casing Supports (10ft x 10ft x 1ft)	4	2520185.8	1695562.3	Concrete	Concrete	Yes	480				Break Up
164	Concrete Pad under vent casing supports (15ft x 30ft)	1	2520193.5	1695553.8	Concrete	Concrete	Yes	675				Break Up
165	Concrete pillars - 1ft tall with Metal Pipe	2	2519918.3	1695542.9	Concrete/Metal	Concrete	Yes	4				
165B	Concrete Blocks (1ft x 1ft) with metal pipe	10+	2519896.5	1695542.7	Concrete/Metal	Concrete	Yes	20+				
166	Concrete Blocks (3ftx1.5ftx1ft) with Metal Pipe	3	2519885.5	1695552.9	Concrete/Metal	Concrete	Yes	13.5				Break Up
167	Borehole Marker - 2-in Metal Pipe (2.5ft exposed)	1	2519794.5	1695491.3	Metal	Metal	Yes	2				
168	Borehole Marker - 2-in Metal Pipe (2.5ft exposed)	1	2519736.8	1695380.5	Metal	Metal	Yes	2				
169	Borehole Marker - 2-in Metal Pipe (2.5ft exposed)	1	2519498.2	1695138.6	Metal	Metal	Yes	2				
170	Borehole Marker - 2-in Metal Pipe (2.5ft exposed)	1	2519272	1694961.7	Metal	Metal	Yes	2				
171	Borehole Marker - 2-in Metal Pipe (2.5ft exposed)	1	2519698.9	1695119.7	Metal	Metal	Yes	2				
172	Borehole Marker - 2-in Metal Pipe (2.5ft exposed)	1	2520306.3	1694948.2	Metal	Metal	Yes	2				
173	Borehole Marker - 2-in Metal Pipe (2.5ft exposed)	1	2519435	1694627.8	Metal	Metal	Yes	2				
174	Borehole Marker - 2-in Metal Pipe (2.5ft exposed)	1	2519616.9	1694541.3	Metal	Metal	Yes	2				
175	Truck Tire	1	2519555.4	1694466	Rubber	Rubber	No	6				
176	Sheet Metal + 1/2 55-gal barrel	2	2519462.8	1694398.9	Metal	Metal	No	3	X			Flatten
177	Buried scrap pile. (< 15ft x 15ft x 2.5ft)	1	2519421.1	1694377.5	Metal	Metal	Yes	4				
178	1.5-in Metal Rope Cable, Metal Tube, Barrel	3	2519376.9	1694325	Metal	Metal	Yes	6	X			Flatten
179	1-in Metal Tubing, 3 pieces, ~25ft each	3	2519449.6	1694296.1	Metal	Metal	No	--			X	
180	Scrap Metal	1	2519512.7	1694087.3	Metal	Metal	No	--			X	
181	1.5-in Metal Rope Cable and Debris	1	2519503.3	1694090	Metal	Metal	Yes	--			X	
182	1-in Metal Pipe (20ft exposed)	1	2519487.4	1694072.1	Metal	Metal	Yes	--			X	Flatten
183	Scrap Metal (3ft x 5ft?)	1	2519480.9	1694072.1	Metal	Metal	Yes	--			X	
184	1.5-in Metal Rope Cable + 1-in Conduit	2	2519481.7	1694049.4	Metal/Plastic	Metal	Yes	--			X	
185	Metal Trash Can Lids + Debris		2519415.1	1694030.3	Metal	Metal	No	--			X	
186	Partially Buried Metal Debris Pile	1	2519418.8	1694053.5	Metal	Metal	Yes	10	X			Flatten
187	Metal Scrap Pile	1	2519406.7	1693995.6	Metal	Metal	Yes?	10				
188	1.5-in Metal Rope Cable	1	2519402.5	1693960	Metal	Metal	Yes	--			X	
189	0.25-in Steel Cable (50ft?)	1	2519372.1	1693817.2	Metal	Metal	No	--			X	
190	Sheet Metal Debris	1	2519203.5	1693674.7	Metal	Metal	No	--			X	
191	Metal+Plastic Debris - Pipes/Cables/Sheet		2519205	1693630.5	Metal/Plastic	Metal	Yes	317600				

Table B3.1
MINE SITE DEBRIS INVENTORY TABLE

ID Number	Description of Debris	Quantity	Easting ¹	Northing ¹	Composition	Major Compositon	Fixed	Estimated Total Volume (cu. ft) ²	Compressible	Biodegradable	Small	Activity Required Prior to Disposal
192	Small Building (collapsed)	1	2519125.2	1693624.7	Metal/Wood	Wood	No	300?		Partially		
193	Corrugated Metal and Wood Debris	1	2519065.4	1693585.3	Metal/Wood	Metal	No	5		Partially		
194	Large Pile of 1.5-in Metal Rope Cable (20ft x 10ft)		2519045	1693570.9	Metal	Metal	No	400				
195	PVC Pipe and Scrap Metal		2519196.8	1693560.3	Metal/Plastic	Plastic	Yes	--			X	
196	Scrap Metal (4ft x 1ft)	1	2519218	1693576.4	Metal	Metal	No	4				
197	4-in PVC Pipe (5ft)	1	2519651.1	1693435.2	Plastic	Plastic	No	--			X	
198	Concrete Tank Support (Vent Casing) on Small Pad (10ft x 10ft x 1ft)	1	2519645.7	1693346.9	Concrete	Concrete	Yes	120				Break Up
199	Concrete Pad (20ft x 20ft) with Metal Pipe	1	2519644.4	1693332.7	Concrete/Metal	Concrete	Yes	600				Break Up
200	Concrete Vent Hole 6 Pad and Cover (12ft x 12ft) - Bunch of buried tires behind vent hole (P.C. L.B.)	1	2519653.6	1693315.1	Concrete/Metal	Concrete	Yes	NA				
201	10-in Metal Pipe with Concrete	1	2520507.4	1694141.7	Concrete/Metal	Concrete	Yes	8	X			Flatten
202	2 Vent Casing Supports (12ft x 3ft x 1.5ft) w pad	2	2520270.1	1693804.8	Concrete	Concrete	Yes	144				Break Up
203	Concrete pad next to vent casing supports ((~15 ft x 15ft)	1	2520260.1	1693806.1	Concrete	Concrete	Yes	338				Break Up
204	Metal tank valve and fixed pipe	1	2520265.9	1693792.9	Metal	Metal	Yes	--			X	
205	30ft of 2-in PVC pipe	1	2520245.4	1693739.3	Plastic	Plastic	No	--	X		X	Flatten
206	Small Metal Debris (0.5ft x 3ft)	1	2520258.9	1693731.5	Metal/Plastic	Metal	No	--			X	
207	Metal Debris - small pipe	1	2520350.9	1693692.9	Metal	Metal	Yes	--			X	
208	Foundation (25ft x 25ft x 5ft+)	1	2520365.4	1693681	Concrete	Concrete	Yes	1325				Break Up
209	Concrete pad	1	2520404.7	1693681	Concrete	Concrete	Yes	1694				Break Up
210	NECR2 Shaft+ Plug	1	2520428.3	1693675.5	Concrete/Metal	Concrete	Yes	NA				
211	Concrete anchor (2ft x 2ft x 2ft+)	1	2520419	1693694.5	Concrete/Metal	Concrete	Yes	16				Break Up
212	1.5ft square concrete anchor, surface level	1	2520430.2	1693715.1	Concrete/Metal	Concrete	Yes	4.5				Break Up
213	Concrete/Metal drive through walls (20ft X 4ft+ x 1.5ft)	2	2520440.7	1693688.4	Concrete/Metal	Concrete	Yes	360				Break Up
214	Concrete pad, partially buried (20ft x 80ft x ?)	1	2520453.9	1693668.1	Concrete	Concrete	Yes	1600				Break Up
215	Concrete anchor (2ft x 2ft x 2ft+)	1	2520444.1	1693662.3	Concrete/Metal	Concrete	Yes	16				Break Up
216	8-in Metal Pipe, vertical	1	2520442.2	1693659.2	Metal	Metal	Yes	5	X			Flatten
217	Concrete pad (36ft x 24ft x 2ft+)	1	2520361.6	1693618.7	Concrete	Concrete	Yes	2592				Break Up
218	Metal Debris (<3ft)	1	2520369.5	1693628.5	Metal	Metal	Yes	--			X	
219	Anchors (6ft x 6ft x 6ft+) (Go pretty deep - P.C. L. Bush)	2	2520478	1693685.5	Concrete/Metal	Concrete	Yes	572				Break Up
220	Foundation with 18-in I-Beams (15ft x 15ft)	1	2520470	1693697	Concrete/Metal	Concrete	Yes	450				Break Up
221	Concrete Pad (Compressor Base)	1	2520507.2	1693738.6	Concrete	Concrete	Yes	1424				Break Up
222	Concrete Pad	1	2520540.8	1693716	Concrete	Concrete	Yes	1063				Break Up
223	Concrete Structure, ~3ft tall in middle	1	2520578.7	1693722.2	Concrete/Metal	Concrete	Yes	2175				Break Up
224	Concrete Block (2.5ft x 3ft x 18ft)	1	2520510.4	1693722.6	Concrete/Metal	Concrete	Yes	140				Break Up
225	Concrete Block (2.5ft x 10ft x 18ft)	1	2520503.1	1693731.5	Concrete/Metal	Concrete	Yes	278				Break Up
226	Concrete block shaped like a number 9.	1	2520496.8	1693744.6	Concrete/Metal	Concrete	Yes	242				Break Up
227	Power Pole	1	2520567.7	1693782.4	Wood/Metal/Plastic	Wood	Yes	31		X		Cut
228	Power Pole	1	2520598.1	1693779.6	Wood/Metal/Plastic	Wood	Yes	31		X		Cut
229	Power Pole	1	2520716.5	1693770.2	Wood/Metal/Plastic	Wood	Yes	31		X		Cut
230	Small electrical box	1	2520717	1693768.9	Metal	Metal	Yes	--			X	

<div>Table B3.1</div> <div>MINE SITE DEBRIS INVENTORY TABLE</div>												
ID Number	Description of Debris	Quantity	Easting ¹	Northing ¹	Composition	Major Compositon	Fixed	Estimated Total Volume (cu. ft) ²	Compressible	Biodegradable	Small	Activity Required Prior to Disposal
231	Power Pole (Did not map 2 power poles in background)	1	2520862.9	1693487.7	Wood/Metal/Plastic	Wood	Yes	31		X		Cut
232	Scrap in drainage (4 photos)	Lots	2520866.6	1693690.2	Metal/Concrete/Plastic/Wood	Metal	Yes	100?	X	X		Flatten
233	Power Pole	1	2520911.2	1693754.8	Wood/Metal/Plastic	Wood	Yes	31		X		Cut
234	Small plywood structure	1	2520936.9	1693746.9	Wood	Wood	Yes	10		X		
235	Concrete Pad (NECR2 admin building)	1	2520540.5	1693942.2	Concrete	Concrete	yes	3328				Break Up
236	4-in PVC Pipe fixed in pad, 2 pipes next to it.	3	2520597.5	1693965.7	Plastic	Concrete	Yes	--			X	Flatten
237	2-in vertical metal pipes fixed to 10-in metal pipe (buried/horizontal)	?	2520432.1	1693894.2	Metal	Metal	Yes	--			X	Flatten
238	Buried 4-in metal pipes	2	2520490.5	1693825.7	Metal	Metal	Yes	--			X	Flatten
239	Powder Magazine building, 15ft tall.	1	2520928.5	1694480.9	Concrete/Wood/Metal	Concrete	Yes	10500				Break Up
240	6-in Metal Pipe	1	2520932	1694507.9	Metal	Metal	Yes	--	X		X	Flatten
241	3ft corrugated culvert	1	2520894.2	1694256.9	Metal	Metal	Yes	106	X			Flatten
242	Cap Magazine	1	2520848.3	1694178.1	Concrete/Wood/Metal	Concrete	Yes	1116				Break Up
243	6-in metal pipes	4	2520853.5	1694184.7	Metal/Concrete	Metal	Yes	--	X		X	Flatten
244	1/2-in steel cable - 30ft+	1	2520919.1	1694044.9	Metal	Metal	Yes	--			X	
245	Power Pole	1	2520955.4	1694020.1	Wood/Metal/Plastic	Wood	Yes	31		X		Cut
246	Gas nozzle debris	1	2520968.8	1694086.7	Metal	Metal	No	--			X	
247	Borehole Marker - 2-in metal pipe vertical	1	2521016.4	1694132.9	Metal	Metal	Yes	2				
248	Power Pole	1	2521006.5	1694287.6	Wood/Metal/Plastic	Wood	Yes	31		X		Cut
249	Power Pole	1	2521050.6	1694554.8	Wood/Metal/Plastic	Wood	Yes	31		X		Cut
250	Green electrical box	1	2521042.7	1694560.1	Metal	Metal	Yes	--			X	
251	1/2-in electrical cable, 40ft+	1	2521042.9	1694579.6	Metal/Plastic	Plastic	Yes	--			X	
252	3ft metal culvert	1	2520925.7	1694585.9	Metal	Metal	Yes	106	X			Flatten
253	3ft x 3ft chunk of concrete w metal pipe	1	2520913.1	1694601.6	Concrete/Metal	Concrete	Yes	27				Break Up
254	2-in Metal Cable	1	2520911.8	1694574.1	Metal	Metal	Yes	--			X	
255	Borehole Marker - 2-in metal pipe vertical	1	2520982.4	1694595.7	Metal	Metal	Yes	2				
256	Cable across road (power cable?)	1	2521239.4	1694725.2	Metal/Plastic	Plastic	Yes	31		X		Cut
257	Green electrical box	1	2521233.5	1694734.8	Metal	Metal	Yes	--			X	
258	Green electrical box	1	2521393.9	1694843.2	Metal	Metal	Yes	--			X	
259	T-Post	1	2521457.2	1694835.6	Metal	Metal	Yes	--			X	
260	20ft of 1/2-in metal pipe	1	2521453.1	1694831.9	Metal	Metal	No	--			X	
261	2-in PVC pipe	1	2521485.9	1694830.5	Plastic	Plastic	Yes	--			X	Flatten
262	Green electrical boxes	2	2521801.8	1694970.7	Metal	Metal	Yes	--			X	
263	1.5-in cable	1	2521801	1694968.1	Metal	Metal	Yes	--			X	
264	Pond1 Buried Debris (cinder blocks, driscoll, etc) ~50ft x 30ft	?	2522026.3	1695053.9	Metal/Concrete/Plastic/Wood	metal	Yes	26750				
265	Power pole	1	2522044.9	1695218	Wood/Metal/Plastic	Wood	Yes	31		X		Cut
266	Power pole	1	2522263.1	1695286.7	Wood/Metal/Plastic	Wood	Yes	31		X		Cut
267	Tank Pad with 2 supports	1	2522390.8	1695403	Concrete	Concrete	Yes	257				Break Up
268	Concrete block (2ft x 2ft x 2ft)	1	2522408.7	1695402.1	Concrete/Wood	Concrete	Yes	8				Break Up
269	Power pole - left of GPS position (raining hard)	1	2522509.8	1695386.5	Wood/Metal/Plastic	Wood	Yes	31		X		Cut
270	Posts for gate	5	2522518.9	1695389.9	Metal	Metal	Yes	20				
271	2-ft metal culvert, no photo	1	2522579.6	1695417.6	Metal	Metal	Yes	47	X			Flatten

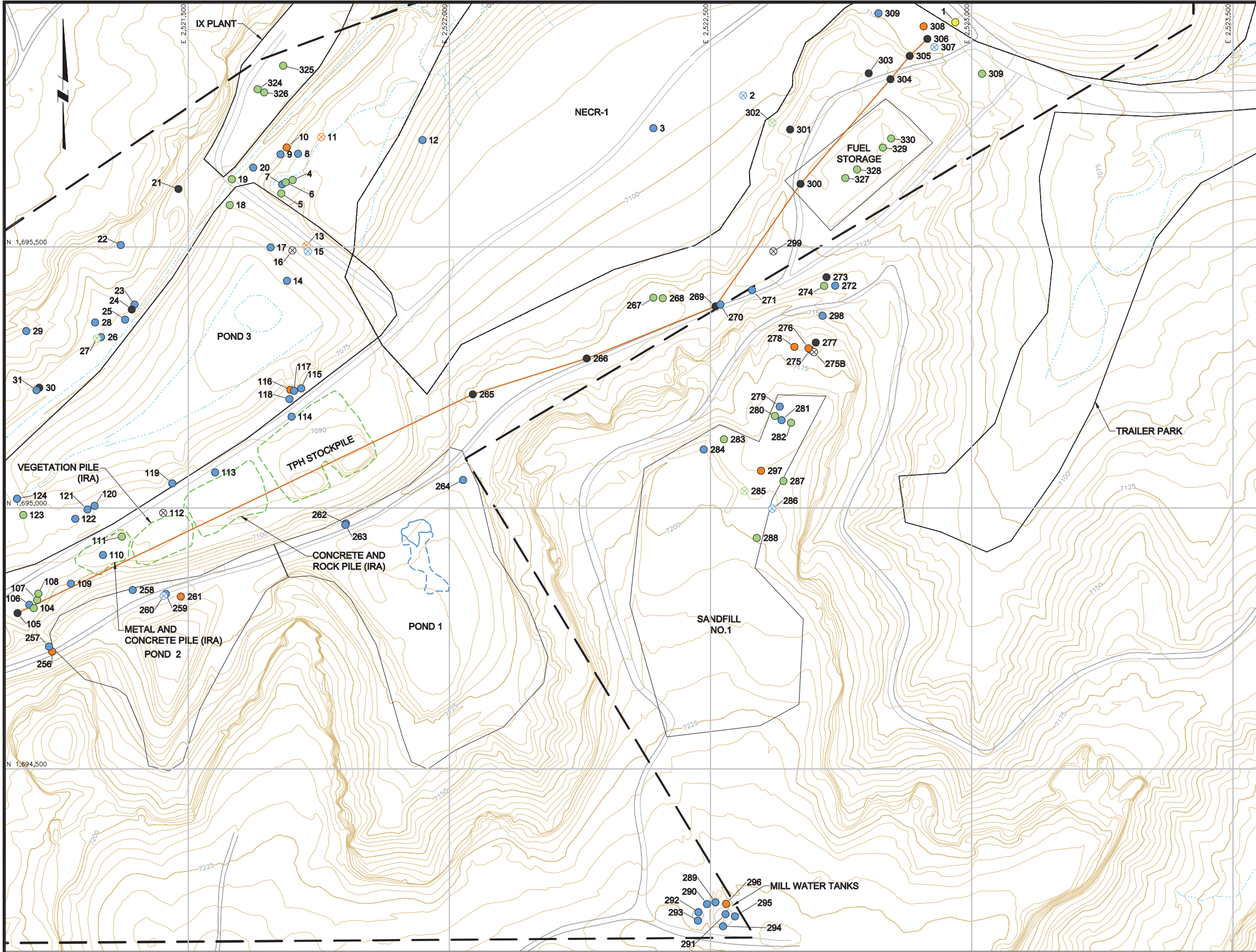
Table B3.1
MINE SITE DEBRIS INVENTORY TABLE

ID Number	Description of Debris	Quantity	Easting ¹	Northing ¹	Composition	Major Compositon	Fixed	Estimated Total Volume (cu. ft) ²	Compressible	Biodegradable	Small	Activity Required Prior to Disposal
272	15ft tall tank	1	2522738.8	1695426	Metal	Metal	No	586	X			Cut
273	Wood debris	1	2522722.1	1695442.4	Wood	Wood	Yes	10		X		
274	Pad with 2-in PVC (6ft x 8ft)	1	2522717.6	1695425.6	Concrete/Plastic	Concrete	Yes	96				Break Up
275	20-ft tall x 12ft diameter tank+platform	1	2522691.2	1695303.1	Metal	Metal	Yes	175	X			Cut
275B	Wood structure (20ft x 20ft x 4ft)	1	2522698.2	1695298.9	Wood	Wood	Yes	600?				Cut
276	3-in orange hose attached to tank, 40ft+	1	2522687.6	1695306.2	Plastic/Metal	Plastic	Yes	3				
277	Wood "vault"? With pipe (6ft x 6ft)	1	2522701.5	1695317.2	Wood/Metal	Wood	Yes	120		X		Cut
278	100ft+ of power cable	?	2522660.6	1695308.8	Metal/Plastic	Plastic	Yes	--			X	
279	Electrical Posts	2	2522632.5	1695194.5	Metal	Metal	Yes	--	X		X	Flatten
280	Concrete Pad (15ft x 15ft)	1	2522623.3	1695176.5	Concrete	Concrete	Yes	75				Break Up
281	Metal pipes, vertical, 3-in	3	2522636	1695168.5	Metal	Metal	Yes	--	X		X	Flatten
282	Old concrete pad (6ft x 6ft)	1	2522654.2	1695163.5	Concrete	Concrete	Yes	36				Break Up
283	Concrete Pad (20ft x 30ft)	1	2522525.8	1695131.8	Concrete	Concrete	Yes	600				Break Up
284	Metal pipe, 15ft exposed, 12-in pipe	1	2522487	1695112.3	Metal	Metal	Yes	12	X			Flatten
285	Concrete Debris (10ft x 15ft?)	1	2522565	1695032.7	Concrete	Concrete	No	450				Break Up
286	Metal tank on side (15ft x 20ft)	1	2522618.2	1694998.9	Metal	Metal	No	400	X			Cut
287	Concrete pad (36ft x 2ft x ??)	1	2522639.6	1695051.8	Concrete	Concrete	Yes	216				Break Up
288	Concrete pad (15ft x 5ft)	1	2522588.6	1694942.9	Concrete	Concrete	Yes	75				Break Up
289	Metal Pipe , 8-in	1	2522509.5	1694244.8	Metal	Metal	Yes	20	X			Flatten
290	Metal Pipe, 4-in	1	2522493.4	1694241.6	Metal	Metal	Yes	6.2	X			Flatten
291	30ft tall tank	1	2522528.7	1694222.2	Metal	Metal	Yes	2371.5	X			Cut
292	20ft tall tank	1	2522476.8	1694226	Metal	Metal	Yes	1095	X			Cut
293	8-in pipe from 20ft tank	1+	2522476.1	1694209.9	Metal	Metal	Yes	8	X			Flatten
294	18-in pipes from 30ft tank	2	2522523.9	1694199	Metal	Metal	Yes	23.5	X			Flatten
295	Gauge beside 30ft tank	1	2522546.8	1694218	Metal/Plastic	Metal	Yes	--			X	
296	18-in insulated pipe going up 30ft tank.	1	2522529.7	1694242.1	Plastic/Metal	Plastic	Yes	35	X			Flatten
297	1-in hose, buried	1	2522596.7	1695071.5	Plastic/Metal	Plastic	Yes	--			X	
298	Wood "vault"? With pipe (6ft x 6ft)	1	2522714.6	1695368.5	Wood/Metal	Wood	Yes	120		X		Cut
299	Pallets (10) and straw bales (6)	10,6	2522620.5	1695491.7	Wood	Wood	No	100		X		
300	Power pole	1	2522672.3	1695621.1	Wood/Metal/Plastic	Wood	Yes	31		X		Cut
301	Power pole	1	2522652.4	1695725.1	Wood/Metal/Plastic	Wood	Yes	31		X		Cut
302	Concrete blocks (3ft x 2ft x 2ft)	2	2522618.5	1695738.2	Concrete	Concrete	No	24				
303	Power pole	1	2522802.9	1695832.9	Wood/Metal/Plastic	Wood	Yes	31		X		Cut
304	Power pole	1	2522844.6	1695821.4	Wood/Metal/Plastic	Wood	Yes	31		X		Cut
305	Power pole	1	2522881.4	1695866.1	Wood/Metal/Plastic	Wood	Yes	31		X		Cut
306	Power pole	1	2522915.2	1695898.9	Wood/Metal/Plastic	Wood	Yes	31		X		Cut
307	Metal debris (BLURRY photo)	1	2522928.7	1695882.9	Metal	Metal	No	72?				
308	Buried 4-in metal pipes	1	2522908.1	1695922.8	Metal	Plastic	Yes	10				Decon
309	Active Power Station	1	2522821.6	1695947.8	Metal	Concrete	Yes	NA				
310	Concrete pad with drain (20ft x 20ft)	1	2523019.9	1695832.0	Concrete/Metal	Concrete	Yes	400				Break Up
311	Vent 10 Cover	1	2518513.8	1694109.1	Concrete	Concrete	Yes	NA				
312	5' Culvert Heavy Steel, 36 ft.	1	2520083.1	1693174.1	Metal	Metal	Yes	250	X			Flatten
313	Vent 9 Cover	1	2518986.1	1692184.2	Concrete/Metal	Concrete	Yes	NA				
314	Vent 9 Pad	1	2518985.6	1692184.3	Concrete	Concrete	Yes	NA				

Table B3.1
MINE SITE DEBRIS INVENTORY TABLE

ID Number	Description of Debris	Quantity	Easting ¹	Northing ¹	Composition	Major Compositon	Fixed	Estimated Total Volume (cu. ft) ²	Compressible	Biodegradable	Small	Activity Required Prior to Disposal
315	Crumbled Pad	1	2518974.8	1692196.7	Concrete	Concrete	Yes	400				Break Up
316	Vent Supports	4	2519008.4	1692178.1	Concrete/Metal	Concrete	Yes	60				Break Up
317	Concrete Supports	2	2519006.2	1692174.4	Concrete	Concrete	Yes	64				Break Up
318	Red Beam, 115 ft.	1	2519053.5	1692150.9	Concrete/Metal	Concrete	Yes	230				Break Up
319	Pad 1	1	2519097.3	1692119.5	Concrete/Plastic	Concrete	Yes	216				Break Up
320	Pad 2	1	2519105.0	1692106.5	Concrete/Plastic	Concrete	Yes	120				Break Up
321	Pad 3	1	2519083.7	1692103.6	Concrete/Plastic	Concrete	Yes	200				Break Up
322	Red Power Support Foundation	1	2519069.3	1692094.6	Concrete/Plastic	Concrete	Yes	16				Break Up
323	Rebar	5	2519157.0	1692086.7	Metal	Metal	Yes	--			X	
324	IX 8 12x2x2 supports 8 10x2x2 supports	16	2521632.8	1695802.3	Concrete	Concrete	Yes	704				Break Up
325	IX 4-15x2x2 Supports 4-12x2x2 supports	8	2521681.8	1695847.5	Concrete	Concrete	Yes	432				Break Up
326	IX 100'x56' Pad	1	2521645.4	1695796.3	Concrete	Concrete	Yes	5600				Break Up
327	Fuel Ring 1	1	2522758.0	1695632.2	Concrete	Concrete	Yes	45				Break Up
328	Fuel Ring 2	1	2522780.6	1695648.7	Concrete	Concrete	Yes	45				Break Up
329	Fuel Ring 3	1	2522830.1	1695690.6	Concrete	Concrete	Yes	45				Break Up
330	Fuel Ring 4	1	2522846.0	1695708.0	Concrete	Concrete	Yes	45				Break Up

Notes:
1 State Plane Coordinate System, NAD 83, Feet, New Mexico West
2 '-- Volume of item is <2 cu. ft. 2 cu. ft. used for volume calculation
3 The estimated volumes exclude void space for buildings and assume the compressible volume of culverts is one-half the total culvert volume.



LEGEND:

7040

NECR MINE PERMIT BOUNDARY

FACILITY BOUNDARY

APPROXIMATE NAVAJO NATION BOUNDARY

ROADS

NATURAL DRAINAGE

METALLIC DEBRIS

MIXED METALLIC AND NON-METALLIC DEBRIS

TELEPHONE POLES/LINES

PHYSICAL STRUCTURE

DEBRIS TYPE AND IDENTIFICATION NUMBER:

298

METAL

274

CONCRETE

278

PLASTIC

299

WOOD

1

OTHER

FIXED (COLOR CODED BY TYPE)

NON FIXED (COLOR CODED BY TYPE)

- NOTES:
1. SEE MINE DEBRIS SURVEY SUMMARY TABLE IN APPENDIX B.

2. IRA = 2009 INTERIM REMOVAL ACTION

D:\V04-Blocks\10504918 figure B3-3

A	DRAFT	CF	TL	07/18/14
ISSUE	DESCRIPTION	TECH	ENG	DATE
REV				

DISCLAIMER:
THIS DRAWING WAS DEVELOPED THROUGH THE APPLICATION OF PROFESSIONAL ENGINEERING SKILL AND PROPRIETARY METHODOLOGIES, PROCESSES AND KNOW HOW OF MWH AS AUTHOR ALL PURSUANT TO THE TERMS OF A CONTRACTUAL SCOPE OF WORK GOVERNING ITS PREPARATION. THIS DRAWING MAY NOT BE USED OR MODIFIED OTHER THAN IN STRICT ACCORDANCE WITH THE TERMS OF THE GOVERNING CONTRACT AND SCOPE OF WORK OR OTHERWISE ABSENT THE INVOLVEMENT AND CONSENT OF THE AUTHOR. ANY ALTERATION OR ADAPTATION OF THIS DRAWING SHALL BE CONSISTENT WITH THE AUTHOR'S CONTRACTUAL AND PROPRIETARY RIGHTS AND BE AT USER'S SOLE RISK AND WITHOUT ANY LIABILITY OR LEGAL RESPONSIBILITY OF MWH.

- DRAWING REFERENCE(S):
1. ORIGINAL SURFACE TOPOGRAPHY GENERATED FROM AERIAL PHOTOGRAPHS DATED MAY 2007 BY COOPER AERIAL SURVEYS CO. AND USGS 10m DIGITAL ELEVATION MODELS (DEM).

2. NECR-1, STEP-OUT NO.1 AND NO.2 REGRADE TOPOGRAPHY SURVEY DATA PROVIDED BY MORRIS SURVEYING ENGINEERING, LLC; DATED MAY 2010 AND DEC 2012.

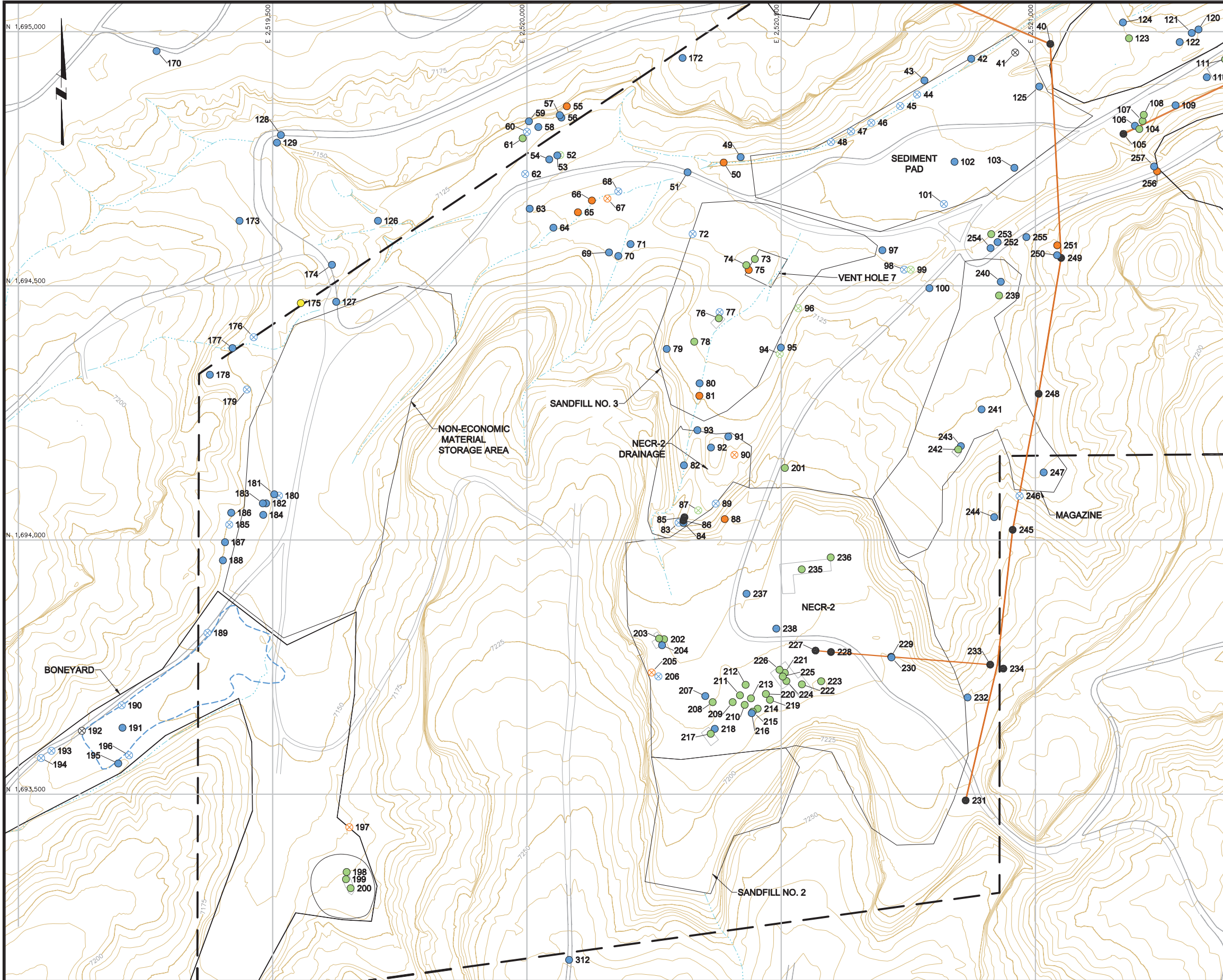
DESIGNED BY	T LEESON	05/15/14
DRAWN BY	C FOWLER	05/15/14
CHECKED BY	T LEESON	05/15/14
APPROVED BY	T LEESON	05/15/14
PROJECT MANAGER	T LEESON	05/15/14
CLIENT APPROVAL		
CLIENT REFERENCE NO.		



PROJECT LOCATION	MCKINLEY COUNTY, NEW MEXICO
PROJECT	NORTHEAST CHURCH ROCK MINE PRE-DESIGN STUDIES REPORT
TITLE	NECR MINE SITE SURFACE DEBRIS INVENTORY MAP 1



FIGURE	B3-1	REVISION	A
FILE NAME	10504918 figure B3-3		



LEGEND:

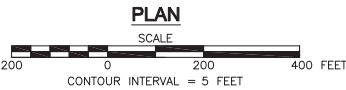
- 7040 EXISTING GROUND SURFACE CONTOUR & ELEVATION, FEET
- NECR MINE PERMIT BOUNDARY
- FACILITY BOUNDARY
- APPROXIMATE NAVAJO NATION BOUNDARY
- ROADS
- NATURAL DRAINAGE
- METALLIC DEBRIS
- MIXED METALLIC AND NON-METALLIC DEBRIS
- PHYSICAL STRUCTURE

DEBRIS TYPE AND IDENTIFICATION NUMBER:

- | | | | |
|-----|----------|---|---------------------------------|
| 298 | METAL | ● | FIXED (COLOR CODED BY TYPE) |
| 274 | CONCRETE | ⊗ | NON FIXED (COLOR CODED BY TYPE) |
| 278 | PLASTIC | | |
| 299 | WOOD | | |
| 1 | OTHER | | |

NOTE:

SEE MINE DEBRIS SURVEY SUMMARY TABLE IN APPENDIX B.




A	DRAFT	CF	TL	05/15/14
ISSUE	DESCRIPTION	TECH	ENG	DATE

DISCLAIMER:
THIS DRAWING WAS DEVELOPED THROUGH THE APPLICATION OF PROFESSIONAL ENGINEERING SKILL AND PROPRIETARY METHODOLOGIES, PROCESSES AND KNOW HOW OF MWH AS AUTHOR ALL PURSUANT TO THE TERMS OF A CONTRACTUAL SCOPE OF WORK GOVERNING ITS PREPARATION. THIS DRAWING MAY NOT BE USED OR MODIFIED OTHER THAN IN STRICT ACCORDANCE WITH THE TERMS OF THE GOVERNING CONTRACT AND SCOPE OF WORK OR OTHERWISE ABSENT THE INVOLVEMENT AND CONSENT OF THE AUTHOR. ANY ALTERATION OR ADAPTATION OF THIS DRAWING SHALL BE CONSISTENT WITH THE AUTHOR'S CONTRACTUAL AND PROPRIETARY RIGHTS AND BE AT USER'S SOLE RISK AND WITHOUT ANY LIABILITY OR LEGAL RESPONSIBILITY OF MWH.

DRAWING REFERENCE(S):
1. ORIGINAL SURFACE TOPOGRAPHY GENERATED FROM AERIAL PHOTOGRAPHS DATED MAY 2007 BY COOPER AERIAL SURVEYS CO. AND USGS 10m DIGITAL ELEVATION MODELS (DEM).
2. NECR-1, STEP-OUT NO.1 AND NO.2 REGRADE TOPOGRAPHY SURVEY DATA PROVIDED BY MORRIS SURVEYING ENGINEERING, LLC; DATED MAY 2010 AND DEC 2012.

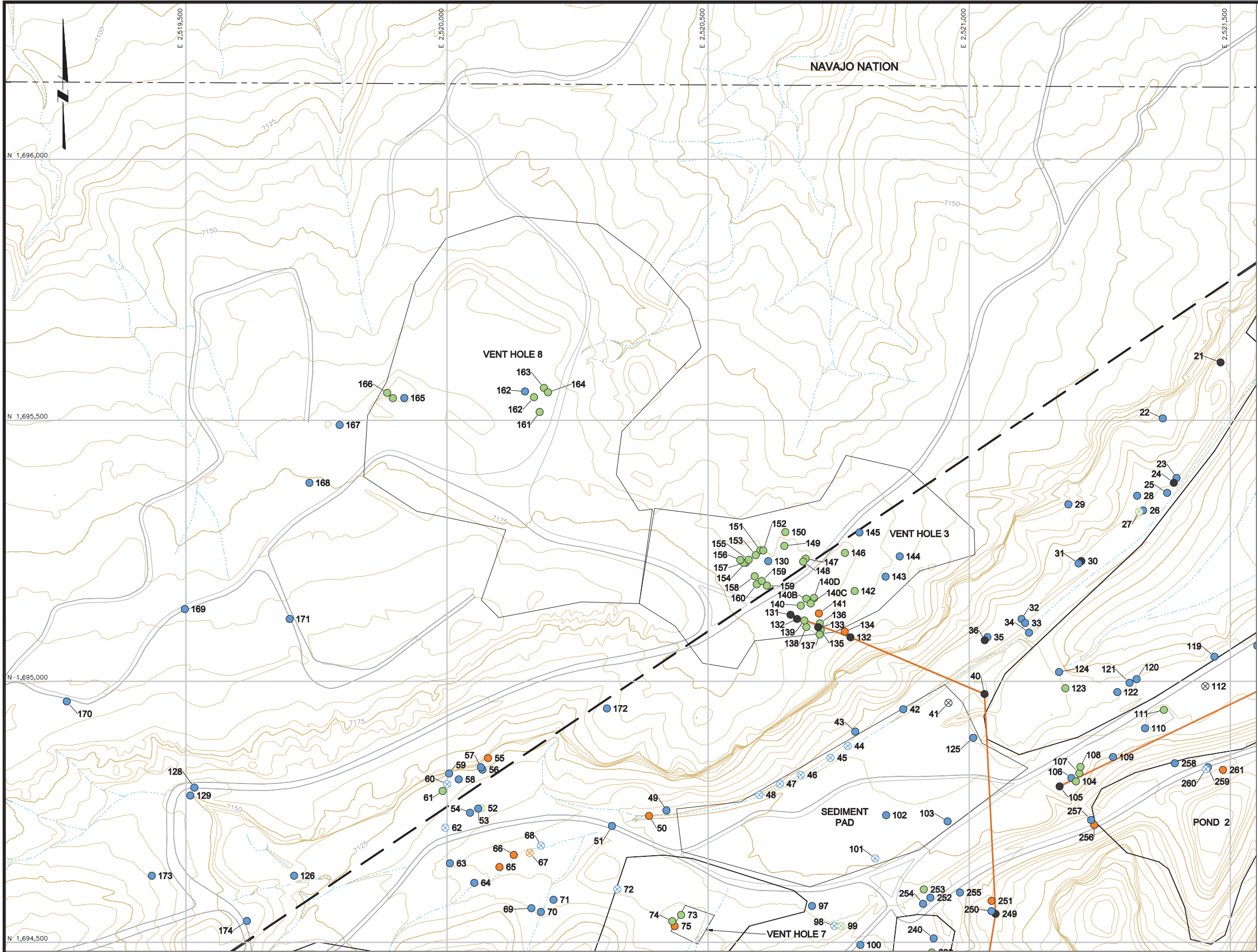
DESIGNED BY	T LEESON	05/15/14
DRAWN BY	C FOWLER	05/15/14
CHECKED BY	T LEESON	05/15/14
APPROVED BY	T LEESON	05/15/14
PROJECT MANAGER	T LEESON	05/15/14
CLIENT APPROVAL		
CLIENT REFERENCE NO.		



PROJECT LOCATION MCKINLEY COUNTY, NEW MEXICO			
PROJECT NORTHEAST CHURCH ROCK MINE PRE-DESIGN STUDIES REPORT			
TITLE NECR MINE SITE SURFACE DEBRIS INVENTORY MAP 2		FIGURE B3-2	REVISION A
		FILE NAME 10504918 figure B3-2	



MWH



LEGEND:

7040

NECR MINE PERMIT BOUNDARY

FACILITY BOUNDARY

APPROXIMATE NAVAJO NATION BOUNDARY

ROADS

NATURAL DRAINAGE

METALLIC DEBRIS

MIXED METALLIC AND NON-METALLIC DEBRIS

TELEPHONE POLES/LINES

PHYSICAL STRUCTURE

EXISTING GROUND SURFACE CONTOUR & ELEVATION, FEET

NECR MINE PERMIT BOUNDARY

FACILITY BOUNDARY

APPROXIMATE NAVAJO NATION BOUNDARY

ROADS

NATURAL DRAINAGE

METALLIC DEBRIS

MIXED METALLIC AND NON-METALLIC DEBRIS

TELEPHONE POLES/LINES

PHYSICAL STRUCTURE

DEBRIS TYPE AND IDENTIFICATION NUMBER:

298

274

278

299

1

METAL

CONCRETE

PLASTIC

WOOD

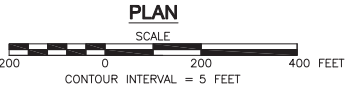
OTHER

FIXED (COLOR CODED BY TYPE)






NON FIXED (COLOR CODED BY TYPE)

NOTE:

SEE MINE DEBRIS SURVEY SUMMARY TABLE IN APPENDIX B.



CONTOUR INTERVAL = 5 FEET

					DISCLAIMER: THIS DRAWING WAS DEVELOPED THROUGH THE APPLICATION OF PROFESSIONAL ENGINEERING SKILL AND PROPRIETARY METHODOLOGIES, PROCESSES, AND KNOW HOW OF MWH AS AUTHOR, ALL PURSUANT TO THE TERMS OF A CONTRACTUAL SCOPE OF WORK GOVERNING ITS PREPARATION. THIS DRAWING MAY NOT BE USED OR MODIFIED OTHER THAN IN STRICT ACCORDANCE WITH THE TERMS OF THE GOVERNING CONTRACT AND SCOPE OF WORK OR OTHERWISE ABSENT THE INVOLVEMENT AND CONSENT OF THE AUTHOR. ANY ALTERATION OR ADAPTATION OF THIS DRAWING SHALL BE CONSISTENT WITH THE AUTHOR'S CONTRACTUAL AND PROPRIETARY RIGHTS AND BE AT USER'S SOLE RISK AND WITHOUT ANY LIABILITY OR LEGAL RESPONSIBILITY OF MWH.	DRAWING REFERENCE(S): 1. ORIGINAL SURFACE TOPOGRAPHY GENERATED FROM AERIAL PHOTOGRAPHS DATED MAY 2007 BY COOPER AERIAL SURVEYS CO. AND USGS 10m DIGITAL ELEVATION MODELS (DEM). 2. NECR-1, STEP-OUT NO.1 AND NO.2 REGRADE TOPOGRAPHY SURVEY DATA PROVIDED BY MORRIS SURVEYING ENGINEERING, LLC, DATED MAY 2010 AND DEC 2012.	PROJECTION: STATE PLANE COORDINATES ZONE: NEW MEXICO WEST DATUM: NAD 83 UNITS: US FEET	DESIGNED BY	T LEESON	05/15/14	 	PROJECT LOCATION	MCKINLEY COUNTY, NEW MEXICO					
		DRAWN BY	C FOWLER	05/15/14				PROJECT	NORTHEAST CHURCH ROCK MINE PRE-DESIGN STUDIES REPORT									
		CHECKED BY	T LEESON	05/15/14														
		APPROVED BY	T LEESON	05/15/14							 	TITLE	NECR MINE SITE SURFACE DEBRIS INVENTORY MAP 3		FIGURE	B3-3	REVISION	A
A		DRAFT	CF	TL	07/18/14							FILE NAME	10504918 figure B3-1					
ISSUE	REV	DESCRIPTION	TECH	ENG	DATE													