

**APPENDIX B**

**TEST TRENCH FIELD LOGS**



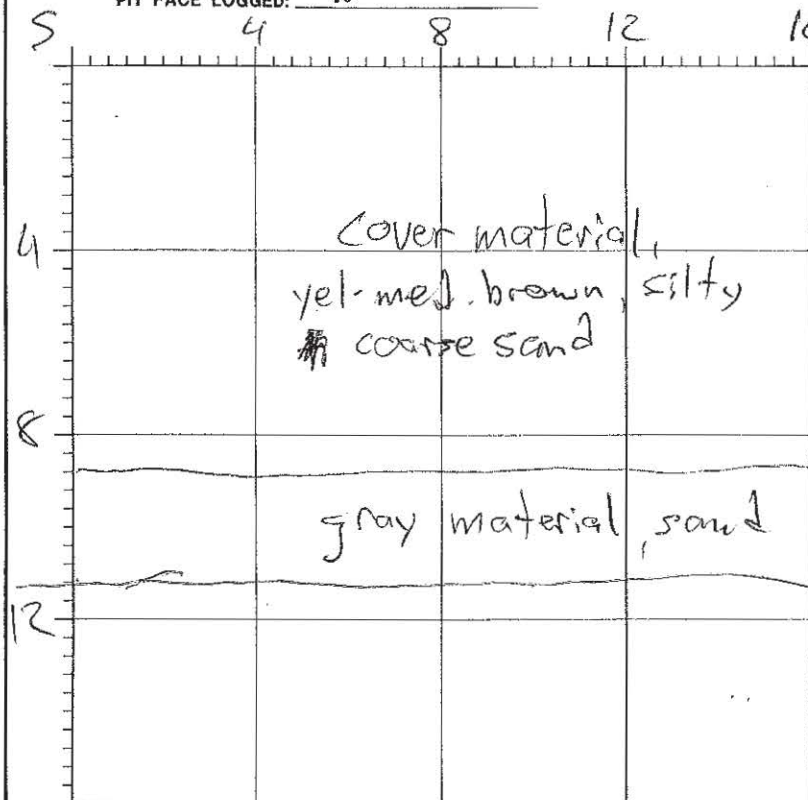
GENERAL LOCATION: TT-217PIT TREND: N-SPIT FACE LOGGED: WDATE: 4/29/11 1200-1220FIELD ENGINEER: L. Fehrig

## TEST PIT LOG

## LEGEND

SOIL HORIZON  
HORIZON CONTRACT  
GROUNDWATER LEVEL

SAMPLE No.	DEPTH	TIME
TT-217-GT1	Comp	1210
TT-217-GT2	Comp	1210

Pit Width: 2.8'  
Pit Length: 16  
Pit Depth: 11

SOIL UNIT	SOIL DESCRIPTION AND EXCAVATION NOTES
cover	Yellowish brown, silty c. sand w/ few gravels
gray	mostly sand, greenish-gray in color. coarser than cover material. samples collected from this area.

## SPECIAL NOTES:

cover material scanned at 20-22 gR/hr  
gray material " " 80 gR/hr  
Backfilled upon completion

REV. No.	REVISIONS	REV. DATE	DESIGN BY	DRAWN BY	REVIEWED AND SIGNED BY

 <b>MWH</b>	PROJECT No. PROJECT NUMBER
	AutoCAD FILE: FILE NAME
SCALE:	FIGURE No.
SCALE	

GENERAL LOCATION: TT-216  
PIT TREND: NE-SW  
PIT FACE LOGGED: \_\_\_\_\_

DATE: 4/29/11 135-1153  
FIELD ENGINEER: L. Ehrig

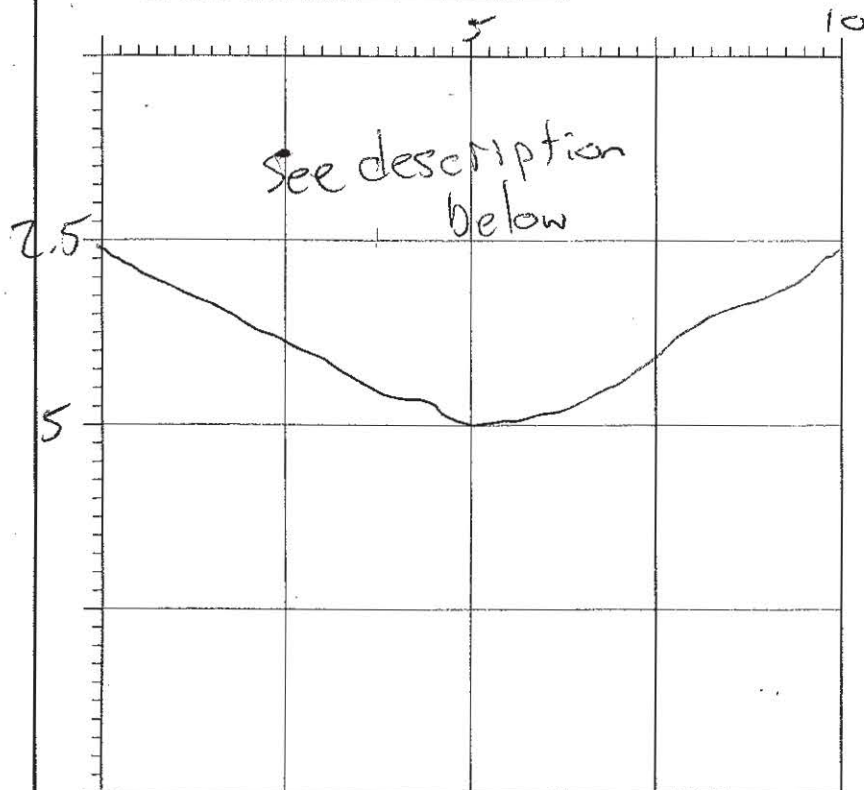
## TEST PIT LOG

### LEGEND

SOIL HORIZON  
HORIZON CONTRACT  
GROUNDWATER LEVEL

SAMPLE No.	DEPTH	TIME
TT-216-GT1	comp	1140
TT-216-GT2	comp	1145

Pit Width: 2'  
Pit Length: 10'  
Pit Depth: 5'



SOIL  
UNIT


### SOIL DESCRIPTION AND EXCAVATION NOTES

Yellowish brown, silty f-c sand w/ gravel  
cover material

### SPECIAL NOTES:

Scanned at 30-36 yR/hr. Backfilled trench upon completion

REV. No.	REVISIONS	REV. DATE	DESIGN BY	DRAWN BY	REVIEWED AND SIGNED BY
PROJECT No. PROJECT NUMBER			AutoCAD FILE FILE NAME		
SCALE: SCALE			FIGURE No:		



GENERAL LOCATION: TT-223 NECR-1

PIT TREND: E-W, N-S

PIT FACE LOGGED: N, W

DATE: 4/29/11 930-1000

FIELD ENGINEER: L. Fuhrig

## TEST PIT LOG

### LEGEND

SOIL HORIZON  
HORIZON CONTRACT  
GROUNDWATER LEVEL

SAMPLE No.	DEPTH	TIME
TT-223-G11	comp	1000
TT-223-G12	comp	1000

Pit Width: 2' / 2'  
Pit Length: 16' / 16'  
Pit Depth: 2' / 2'

SOIL  
UNIT

SOIL DESCRIPTION AND EXCAVATION NOTES

E-W

Yellowish med. brown, silty f-c sand with gravel. cover material for NECR-1. 18-24 gR/hr

N-S

Same as above

### SPECIAL NOTES:

Site moved appx. 80' west of original location  
Scanned at 18-24 gR/hr. Backfilled trenches upon completion

REV. No.	REVISIONS	REV. DATE	DESIGN BY	DRAWN BY	REVIEWED AND SIGNED BY
PROJECT No. PROJECT NUMBER			As per CAD FILE, FILE NAME		
SCALE			FIGURE No.		
SCALE			FIGURE No.		





GENERAL LOCATION: TT-209 Sed. pad  
 PIT TREND: E-W, N-S  
 PIT FACE LOGGED: S, W

DATE: 4/28/11 905 - 1000  
 FIELD ENGINEER: L. Fuhrig

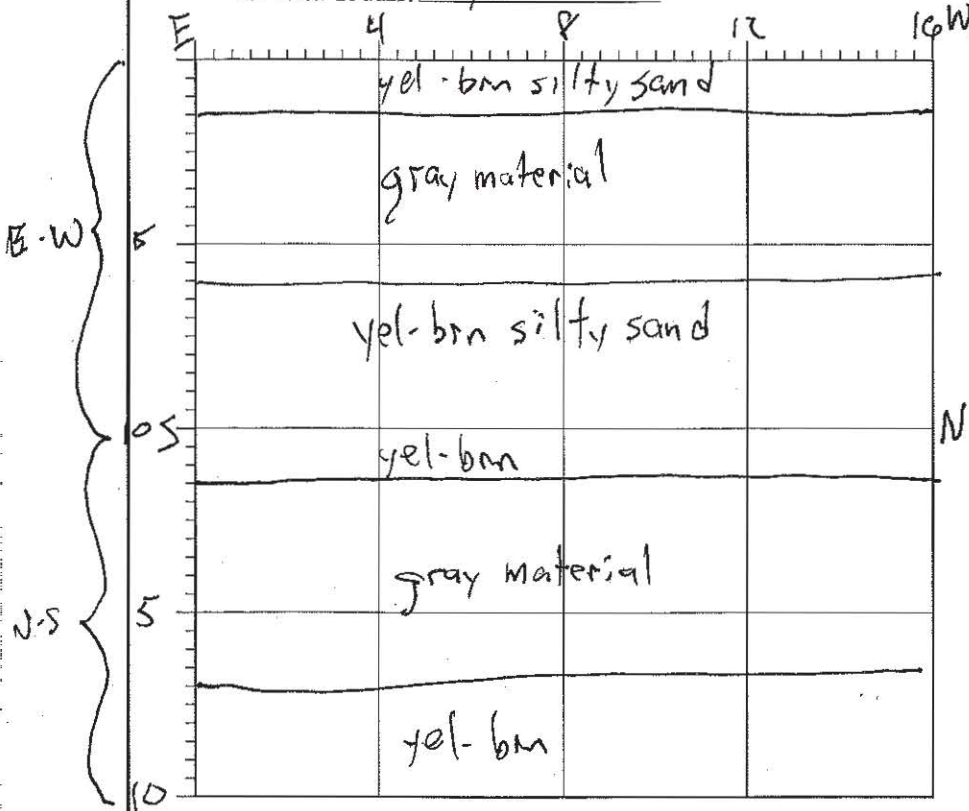
## TEST PIT LOG

### LEGEND

SOIL HORIZON  
 HORIZON CONTRACT  
 GROUNDWATER LEVEL

SAMPLE No.	DEPTH	TIME
TT-209-GT1	Comp	945
TT-209-GT2	Comp	945

Pit Width: 3' / 3'  
 Pit Length: 16' / 3'  
 Pit Depth: 10' / 10'



SOIL UNIT	SOIL DESCRIPTION AND EXCAVATION NOTES
E-W	Mix of silty sand, yellowish brown, and gray material with higher sand content between 1.5' and 6' bgs, then yell-bm 6'-10'
N-S	Same general profile as E-W, slightly deeper gray material

### SPECIAL NOTES:

Significant material caving/sluffing, soft/unconsolidated area  
 Scanned at 220-300 yR/hr. Backfilled trenches upon completion.

REV. No.	REVISIONS	REV. DATE	DESIGN BY	DRAWN BY	REVIEWED AND SIGNED BY
			PROJECT No. PROJECT NUMBER AutoCAD FILE: FILE NAME SCALE: SCALE FIGURE No:		

GENERAL LOCATION: Pond 1, TT-215  
 PIT TREND: NE-SW, NW-SE  
 PIT FACE LOGGED: NW, SW

DATE: 4/28/11 1015-1115  
 FIELD ENGINEER: L. Fehrig

## TEST PIT LOG

### LEGEND

SOIL HORIZON  
 HORIZON CONTRACT  
 GROUNDWATER LEVEL

SAMPLE No.	DEPTH	TIME
TT-215-GT1	comp	1055
TT-215-GT2	comp	1055

Pit Width: 3 / 3  
 Pit Length: 24 / 20  
 Pit Depth: 10 / 10

SOIL  
UNIT

### SOIL DESCRIPTION AND EXCAVATION NOTES

NE-SW

Yellowish dark brown, sandy silt dominant. Some black clayey material. Debris - miscellaneous metal, muscovite, hoist cables, PVC, wire mesh, rusted barrel. relatively moist

SE-NW

Some black material 2' - 6' on SE end. No new debris uncovered, trench dug just NE of hoist cables. mostly yellowish brown. Some orange / gray / black material, likely ore.

### SPECIAL NOTES:

Hot material, scanned at 600  $\mu$ R/hr. Background scanned at 100  $\mu$ R/hr  
 Backfilled upon completion

REV. No.	REVISIONS	REV. DATE	DESIGN BY	DRAWN BY	REVIEWED AND SIGNED BY
PROJECT No: PROJECT NUMBER			AutoCAD FILE: FILE NAME		
SCALE:			FIGURE No:		
SCALE					



GENERAL LOCATION: TT-214 / Pond 1  
 PIT TREND: N-S, E-W  
 PIT FACE LOGGED: W, S

DATE: 4/28/11 1125-1215  
 FIELD ENGINEER: L. Fuhdy

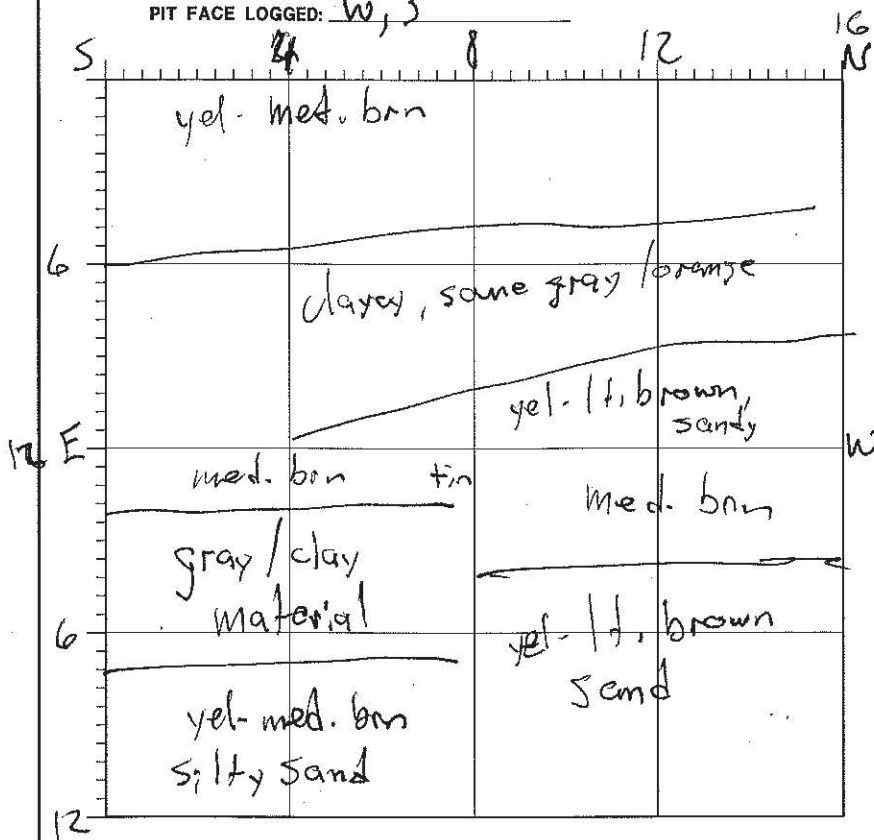
## TEST PIT LOG

### LEGEND

SOIL HORIZON  
 HORIZON CONTACT  
 GROUNDWATER LEVEL

SAMPLE No.	DEPTH	TIME
No sample collected		

Pit Width: 3' / 3'  
 Pit Length: 16' / 16'  
 Pit Depth: 12' / 12'



SOIL UNIT	SOIL DESCRIPTION AND EXCAVATION NOTES
N-S	Yellowish <sup>lt.</sup> med. brown sand-silt primarily. <sup>some</sup> orange / gray / rusty clay material. Corrugated tin sheets near surface (6")
E-W	Yellowish <u>medium</u> and <u>light brown</u> sand / silty sand. more gray / orange clayey material, some muscovite; no add'l metal

### SPECIAL NOTES:

Scanned at 240-260 RPM. Backfilled trenches upon completion.

REV. No.	REVISIONS	REV. DATE	DESIGN BY	DRAWN BY	REVIEWED AND SIGNED BY
PROJECT No. PROJECT NUMBER			AutoCAD FILE: FILE NAME		
SCALE:			FIGURE No:		
SCALE					





GENERAL LOCATION: Fuel oil/stg TT-221  
 PIT TREND: E-W, N-S  
 PIT FACE LOGGED: S, W

DATE: 4/28/11 1230-1300  
 FIELD ENGINEER: L. Fuhrig

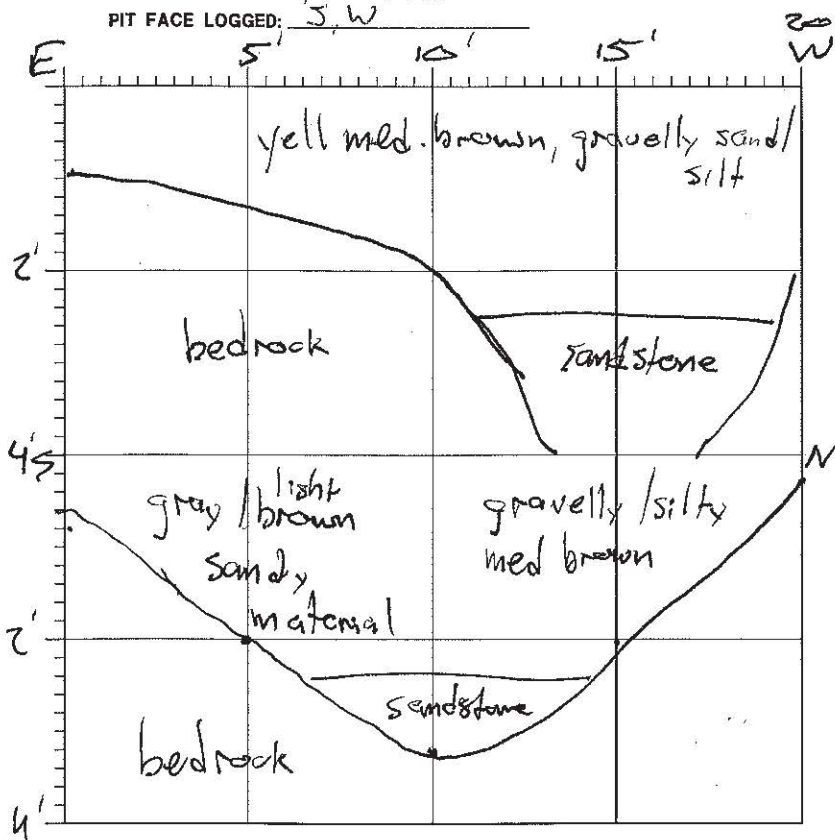
## TEST PIT LOG

### LEGEND

SOIL HORIZON  
 HORIZON CONTRACT  
 GROUNDWATER LEVEL

SAMPLE No.	DEPTH	TIME
no sample collected		

Pit Width: 2'-3" / 2'-3"  
 Pit Length: 20' / 20'  
 Pit Depth: 4' / 4'



SOIL UNIT	SOIL DESCRIPTION AND EXCAVATION NOTES
E-W	Yellowish med. brown, <del>fine sand</del> <sup>gravelly</sup> silty sand, broken sandstone pieces at 2-3' depth. moderate roots no metal pieces
N-S	Same as E-W, no metal, lighter brown sandy material on S. end of trench

### SPECIAL NOTES:

Shallow bedrock, no metal pieces found, back filled after completion  
 while digging, small (4'x10") metal scrap on ground surface nearby

REV. No.	REVISIONS	REV. DATE	DESIGN BY	DRAWN BY	REVIEWED AND SIGNED BY
PROJECT No. PROJECT NUMBER			AutoCAD FILE: FILE NAME		
SCALE			FIGURE No.		



GENERAL LOCATION: TT-222  
 PIT TREND: NE-SW, NW-SE  
 PIT FACE LOGGED: SE, NE

DATE: 4/28/11 1305-1355  
 FIELD ENGINEER: L. Fehrig

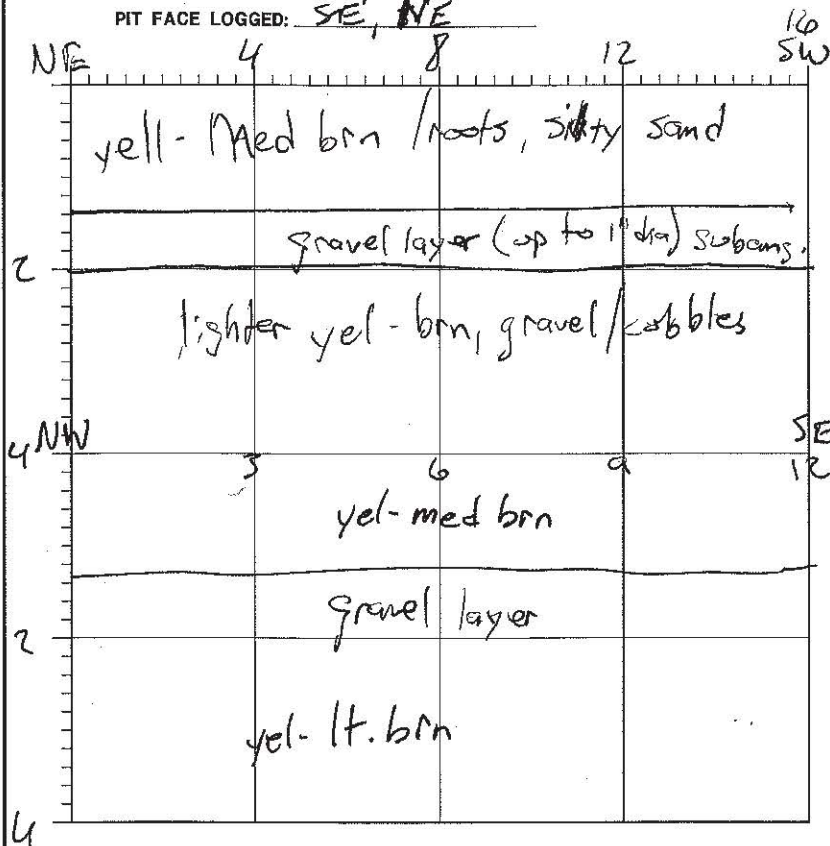
## TEST PIT LOG

### LEGEND

SOIL HORIZON  
 HORIZON CONTRACT  
 GROUNDWATER LEVEL

SAMPLE No.	DEPTH	TIME
No sample collected		

Pit Width: 3' / 3'  
 Pit Length: 16' / 12'  
 Pit Depth: 4' / 4'



SOIL UNIT	SOIL DESCRIPTION AND EXCAVATION NOTES
NE-SW	Yellowish lt to med brown, silty f.c sand, encountered 10' diam circular concrete structure similar to others in area (photos) moved trench over to E at 30° angle. 3/4" <sup>ground</sup> cable found
SE-NW	Same as above, no metal found.

### SPECIAL NOTES:

Scanned at 26-34 yR/hr. Hoe could not dig into circ. concrete structure but it is possible that the anomaly is in this due to the location of the point. Backfilled trenches upon completion.

REV. No.	REVISIONS	REV. DATE	DESIGN BY	DRAWN BY	REVIEWED AND SIGNED BY
PROJECT No: PROJECT NUMBER			AutoCAD FILE: FILE NAME		
SCALE:			FIGURE No:		
SCALE			FIGURE No:		





GENERAL LOCATION: TT-219  
 PIT TREND: E-W, N-S  
 PIT FACE LOGGED: N, W

DATE: 4/28/11 1530 - 1620  
 FIELD ENGINEER: L. Fehrig

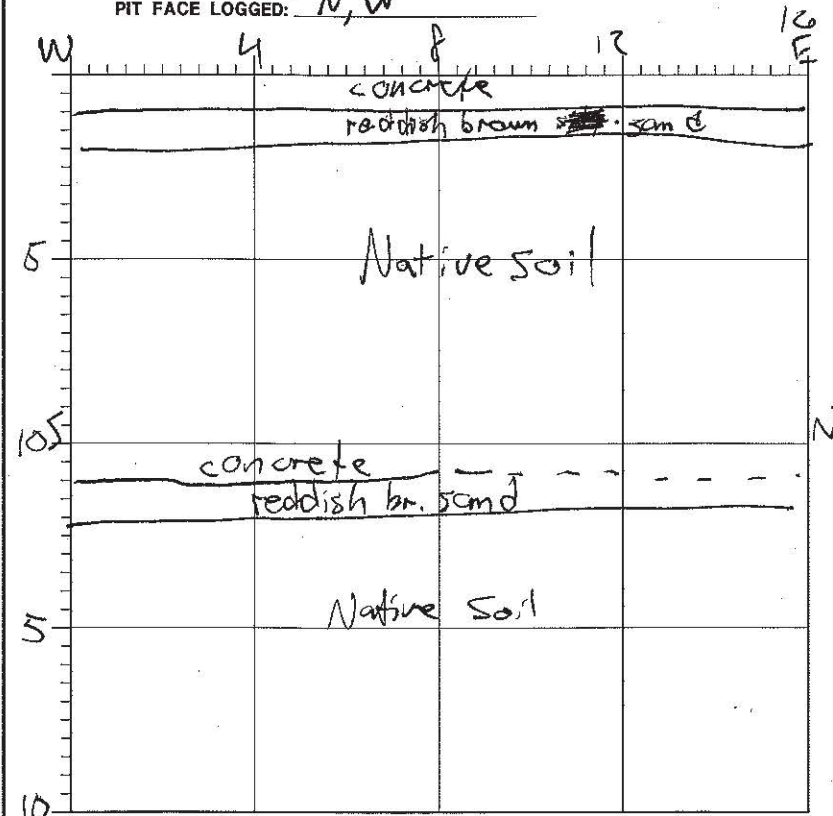
## TEST PIT LOG

### LEGEND

SOIL HORIZON  
 HORIZON CONTRACT  
 GROUNDWATER LEVEL

SAMPLE No.	DEPTH	TIME
TT-219-GT1	comp	1600
TT-219-GT2	comp	1600

Pit Width: 3' / 3'  
 Pit Length: 16' / 16'  
 Pit Depth: 10' / 10'



SOIL UNIT	SOIL DESCRIPTION AND EXCAVATION NOTES
E-W	Concrete at surface, likely from an old road. reddish-brown sand layer below, native soil (yellowish med. brown, silty f. sand w/ gravel) below. No metal objects found.
N-S	Same as above, <sup>less</sup> <del>no</del> concrete on N. side of trench. No metal objects

### SPECIAL NOTES:

Scanned at 14-204R/hr. Back-filled upon completion.

REV. No.	REVISIONS	REV. DATE	DESIGN BY	DRAWN BY	REVIEWED AND SIGNED BY
PROJECT No. PROJECT NUMBER			AutoCAD FILE: FILE NAME		
SCALE			FIGURE No.		





GENERAL LOCATION: TT-220, trailer park  
 PIT TREND: E-W, N-S  
 PIT FACE LOGGED: N, W

DATE: 4/28/11 1620-1700  
 FIELD ENGINEER: L. Fehrig

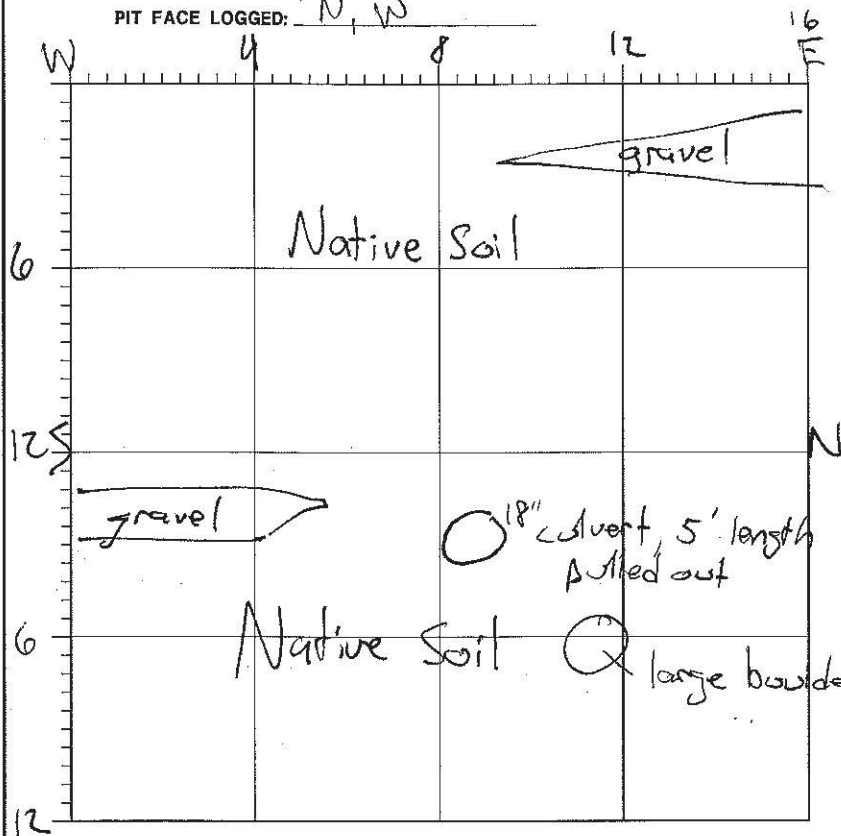
## TEST PIT LOG

### LEGEND

SOIL HORIZON  
 HORIZON CONTRACT  
 GROUNDWATER LEVEL

SAMPLE No.	DEPTH	TIME
No sample collected		

Pit Width: 2' / 2'  
 Pit Length: 16' / 16'  
 Pit Depth: 12' / 12'



SOIL UNIT	SOIL DESCRIPTION AND EXCAVATION NOTES
E-W	Root layer near surface, then native soil (yellowish med. brown silty f. sand w/ some gravel). 18" corrugated metal culvert within 10' from point.
N-S	Same as E-W but 18" metal culvert (5' length) pulled up, buried appx. 1' by s

### SPECIAL NOTES:

Metal culvert nearby. Scanned at 24-26 W R/hr. Backfilled trenches upon completion.

REV. No.	REVISIONS	REV. DATE	DESIGN BY	DRAWN BY	REVIEWED AND SIGNED BY
PROJECT No. PROJECT NUMBER			AUTOCAD FILE: FILE NAME		
SCALE:			FIGURE No:		
SCALE			FIGURE No:		



DATE: 4/27/11 0930-1010  
FIELD ENGINEER: L. Fuhry

## LEGEND

15

yel-brn

greenish-gray material

E-W

yel-brn

Same as E-W


N-S

[illegible]

Pit Width: 10' 10"  
Pit Length: 3' 3"  
Pit Depth: 15' 15"

SOIL UNIT	SOIL DESCRIPTION AND EXCAVATION NOTES
	<p>yellowish-brown and greenish-gray material (1-5'). Several miscellaneous metal pieces found, incl. rock bolts, cable. 5-6 pcs total</p> <p>primarily silty sand</p>

Scanned at 70-80  $\mu\text{R/hr}$ , backfilled upon completion.

REV. No.	REVISIONS			REV. DATE	DESIGN BY	DRAWN BY	REVIEWED AND SIGNED BY	
 MWH						PROJECT No: PROJECT NUMBER		
						AutoCAD FILE NAME		
						SCALE:		FIGURE No:
						SCALE		

GENERAL LOCATION: TT-204  
PIT TREND: N-S, E-W  
PIT FACE LOGGED: E, S

DATE: 4/27/11 1020-1100  
FIELD ENGINEER: E. Fohrig

## TEST PIT LOG

### LEGEND

SOIL HORIZON  
HORIZON CONTRACT  
GROUNDWATER LEVEL

SAMPLE No.	DEPTH	TIME
TT-204-GT1	comp	1055
TT-204-GT2	comp	1055

Pit Width: 10'10" D  
Pit Length: 3'4"3'4" W  
Pit Depth: 15'15" L

SOIL  
UNIT

### SOIL DESCRIPTION AND EXCAVATION NOTES

N-S

yellowish brown material, silty sand w/ some boulders, up to 2' across, some grayish-green pieces. Rock bolt, wire mesh, wires from blasting caps were the metal items found.


E-W

Same as N-S

### SPECIAL NOTES:

Scanned at 40-50 yR/hr, background approx. 70 yR/hr  
Backfilled upon completion.

REV. No.	REVISIONS	REV. DATE	DESIGN BY	DRAWN BY	REVIEWED AND SIGNED BY
PROJECT No. PROJECT NUMBER					
AutoCAD FILE: FILE NAME					
SCALE:			FIGURE No:		
SCALE					



GENERAL LOCATION: TT-207  
PIT TREND: N-S, E-W  
PIT FACE LOGGED: S, E

DATE: 4/27/11 1115-1145  
FIELD ENGINEER: L. Fisher

## TEST PIT LOG

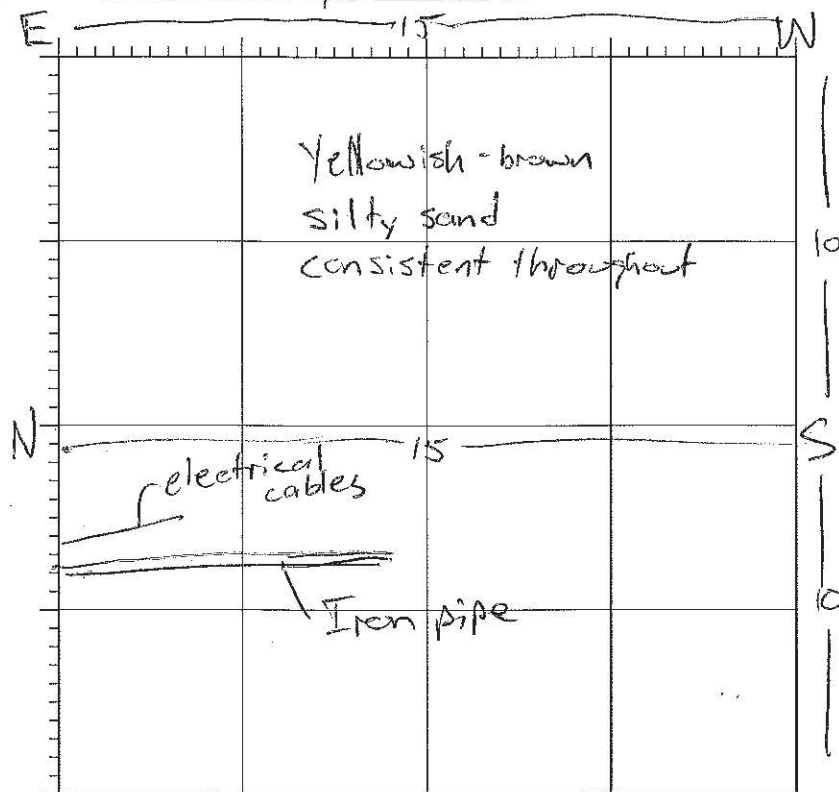
### LEGEND

SOIL HORIZON  
HORIZON CONTRACT  
GROUNDWATER LEVEL

SAMPLE No.	DEPTH	TIME
No sample collected		

E-W N-S

Pit Width: 3' / 3'  
Pit Length: 15' / 15'  
Pit Depth: 10' / 10'



SOIL UNIT	SOIL DESCRIPTION AND EXCAVATION NOTES
E-W	Yellowish brown silty sand w/ some cobbles. No metal
N-S	Same color / texture as above. 4" Iron pipe w/ black coating, copper electric line at a depth of approximately 4' bgs on north end of N-S trench.

### SPECIAL NOTES:

Scanned at approximately 200R/hr. Backfilled upon completion.

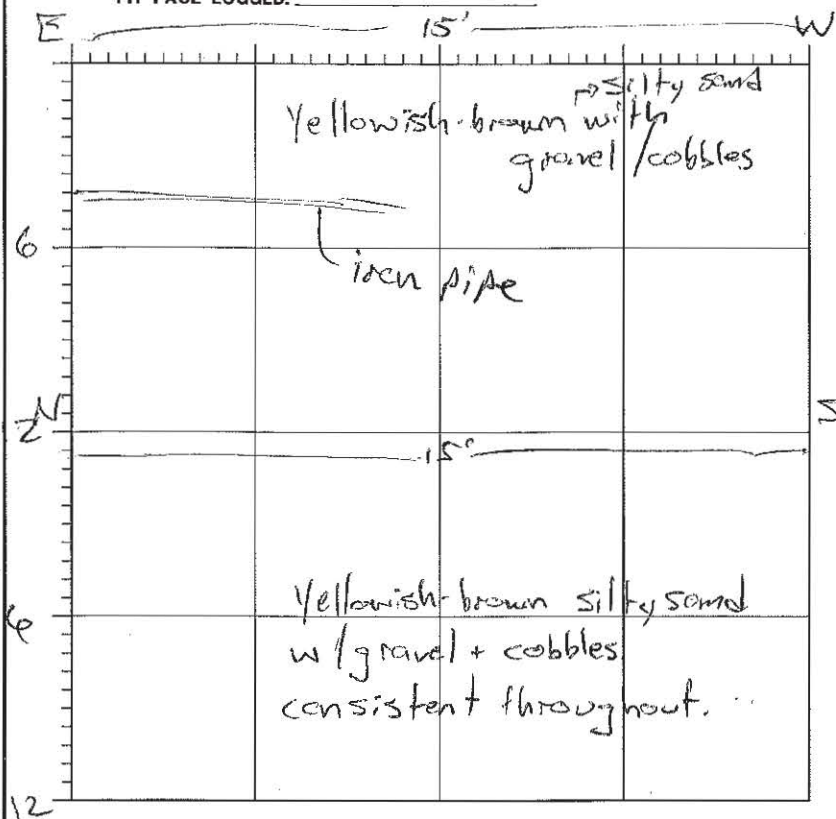
REV. No.	REVISIONS	REV. DATE	DESIGN BY	DRAWN BY	REVIEWED AND SIGNED BY
PROJECT No: PROJECT NUMBER			AutoCAD FILE: FILE NAME		
SCALE:			FIGURE No:		
SCALE					

 MWH



GENERAL LOCATION: TT-208  
 PIT TREND: N-S, E-W  
 PIT FACE LOGGED:

DATE: 4/27/10 1155-1230  
 FIELD ENGINEER: L. Fubry



## TEST PIT LOG

### LEGEND

SOIL HORIZON  
 HORIZON CONTACT  
 GROUNDWATER LEVEL

SAMPLE No.	DEPTH	TIME
No sample collected		

N-S E-W  
 Pit Width: 3' / 3'  
 Pit Length: 15' / 15'  
 Pit Depth: 10' - 12' / 12'

SOIL UNIT	SOIL DESCRIPTION AND EXCAVATION NOTES
E-W  N-S	Yellowish-brown with some gravel/cobbles, mostly silty sand. same pipeline found as in TT-207, black coated iron. This pipe was possibly for a fire extinguisher as TT-208 and 207 are near the magazine.

### SPECIAL NOTES:

Metal culvert 10 ft. west of stake, 15' section of black coated iron pipe laying on ground surface just south of stake. Backfilled upon completion. Scanned at 284R/hr, 6kgd 22-24 yR/hr.

REV. No.	REVISIONS	REV. DATE	DESIGN BY	DRAWN BY	REVIEWED AND SIGNED BY
PROJECT No. PROJECT NUMBER			AutoCAD FILE: FILE NAME		
SCALE			FIGURE No.		



GENERAL LOCATION: TT-204PIT TREND: N-S, NW-SEPIT FACE LOGGED: E, NEDATE: 4/27/11 1320-1410FIELD ENGINEER: L. Fahmy**TEST PIT LOG****LEGEND**SOIL HORIZON  
HORIZON CONTRACT  
GROUNDWATER LEVEL

SAMPLE No.	DEPTH	TIME
Geophysical - no sample collected		

Pit Width: 2'-3" / 2'-3"  
Pit Length: 15' / 18'  
Pit Depth: 8' / 8'SOIL  
UNIT

## SOIL DESCRIPTION AND EXCAVATION NOTES

N-S


Small piece of cable, bedrock encountered at 8'6"  
Silty sand w/ cobbles, gravel throughout, yellowish brown  
Scanned at 22-24 uR/hr. No metals.

SE-NW

Same color + texture as above. Small rusted thin  
metal piece, approx 4" x 10"

## SPECIAL NOTES:

First trench dug N-S, second done just east, at an SE-NW angle  
due to topography of area. Some pipes/cable (rusty) on ground  
surface nearby, bolt/cable 20 ft. NE, photo taken. Backfilled upon completion

REV. No.	REVISIONS	REV. DATE	DESIGN BY	DRAWN BY	REVIEWED AND SIGNED BY
		PROJECT No. PROJECT NUMBER			
		AutoCAD FILE, FILE NAME			
		SCALE:		FIGURE No.	
		SCALE			

GENERAL LOCATION: TT-205

PIT TREND: SE-NW, N-S

PIT FACE LOGGED: SW, E

DATE: 4/27/11 1415-1510

FIELD ENGINEER: L. Fuhay

## TEST PIT LOG

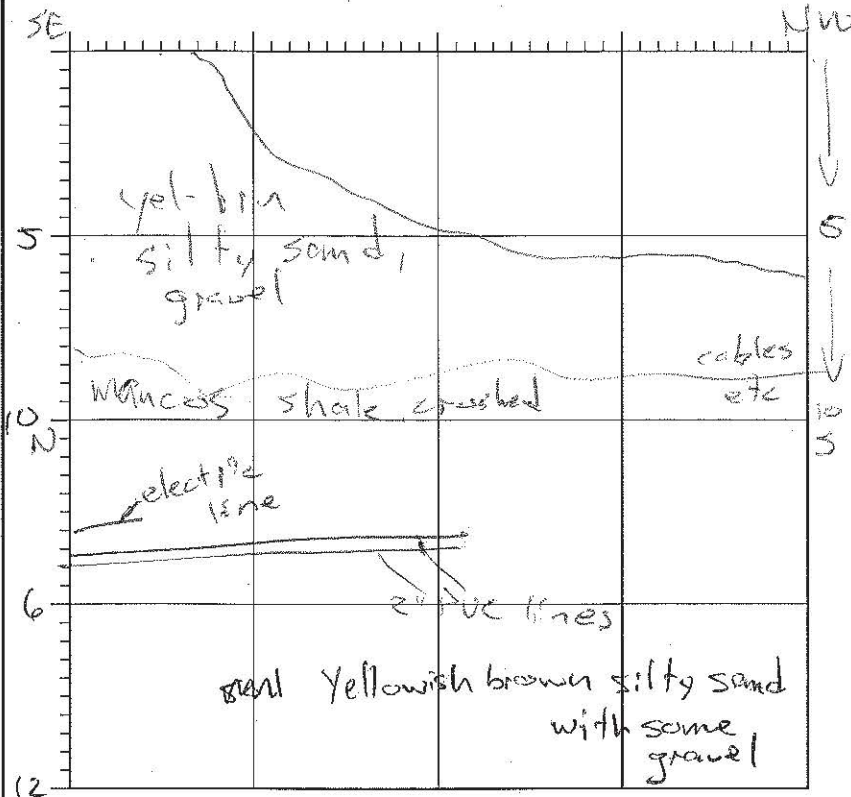
### LEGEND

SOIL HORIZON  
HORIZON CONTRACT  
GROUNDWATER LEVEL

SAMPLE No.	DEPTH	TIME
TT-205-GT-1 (comp)		1435
TT-205-GT-2 (comp)		1500

SE-NW N-S

Pit Width: 3 / 3  
Pit Length: 18 / 15  
Pit Depth: 10 / 12



SOIL UNIT	SOIL DESCRIPTION AND EXCAVATION NOTES
SE-NW	yellowish brown silty sand w/ gravel, darker brown crushed angular gravel. Dog into hill side so trench depth dependent on length along trench. wound, rusty cable, wire mesh
N-S	yellowish brown silty sand w/ some gravel. Trench dug on top side of pond area. rusted pipe 25'-30' E of trench. Two 2" PVC lines and one electric line on center N side of trench

### SPECIAL NOTES:

Sm. Rusted cable on ground surface 5 ft. from stake  
Scanned at 20-30 mph. Backfilled upon completion.

REV. No.	REVISIONS	REV. DATE	DESIGN BY	DRAWN BY	REVIEWED AND SIGNED BY



PROJECT No. PROJECT NUMBER

AUTOCAD FILE: FILE NAME

SCALE:

FIGURE No:

SCALE



GENERAL LOCATION: TT-210PIT TREND: E-W, N-SPIT FACE LOGGED: N, WDATE: 4/27/11 15:55 - 16:25FIELD ENGINEER: L. Fehrig

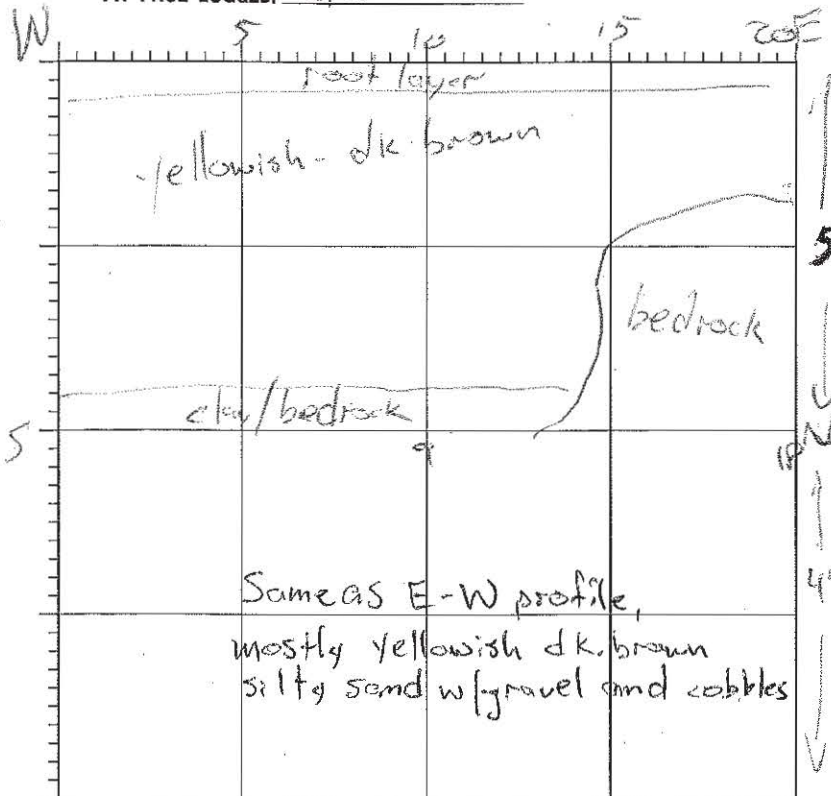
## TEST PIT LOG

## LEGEND

SOIL HORIZON  
HORIZON CONTRACT  
GROUNDWATER LEVEL

SAMPLE No.	DEPTH	TIME
Geophysical location - no sample collected		

W-E S-N

Pit Width: 2.5/2.5  
Pit Length: 20/18  
Pit Depth: 5/4SOIL  
UNIT

## SOIL DESCRIPTION AND EXCAVATION NOTES

E-W

Yellowish dk. brown, some vegetation on surface, shallow bedrock, clay/bedrock at appx. 11 ft through deeper area. silty sand w/ many cobbles and gravel


N-S

Same as E-W, yellowish larger rocks pulled up, up to 12"

## SPECIAL NOTES:

Near Vent Hole 8, Scanned at 18-24 yR/hr  
No apparent metallic anomalies  
Backfilled upon completion.

REV. No.	REVISIONS	REV. DATE	DESIGN BY	DRAWN BY	REVIEWED AND SIGNED BY



PROJECT No.: PROJECT NUMBER  
AutoCAD FILE: FILE NAME  
SCALE: SCALE  
FIGURE No: FIGURE No



GENERAL LOCATION: TT-211

PIT TREND: E-W N-S

PIT FACE LOGGED: S, E

DATE: 4/27/11 1630-1650

FIELD ENGINEER: L. F. ...

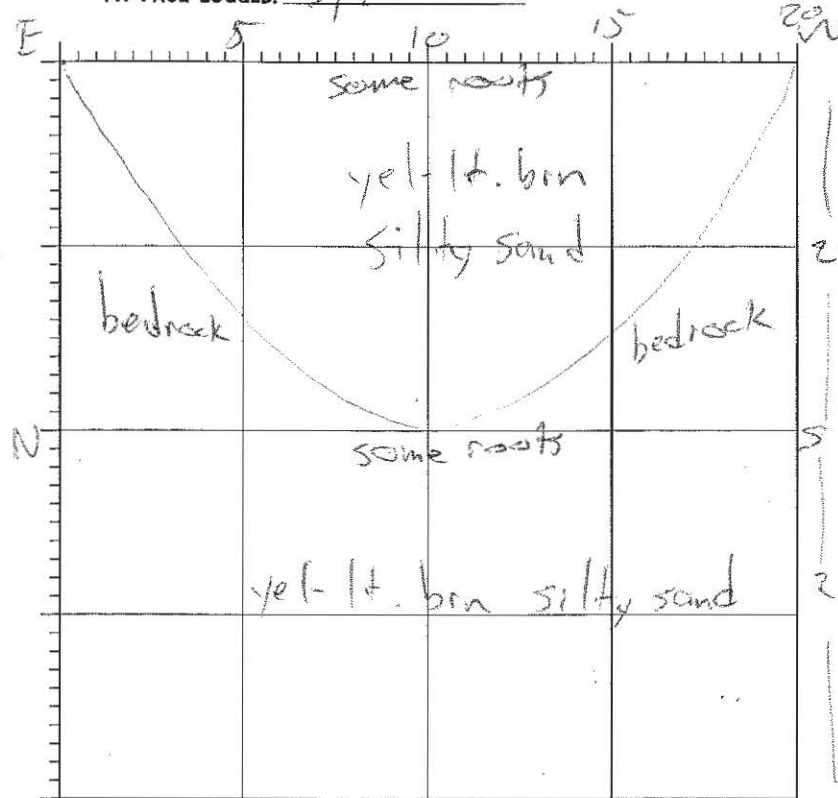
## TEST PIT LOG

### LEGEND

SOIL HORIZON  
HORIZON CONTRACT  
GROUNDWATER LEVEL

SAMPLE No.	DEPTH	TIME
No Sample collected		

Pit Width: 2' / 2'  
Pit Length: 20' / 20'  
Pit Depth: 2' / 2'



SOIL UNIT	SOIL DESCRIPTION AND EXCAVATION NOTES
E-W	Yellowish lt. brown, few cobbles/gravel, mostly silty sand Shallow bedrock, about 2' deep
N-S	Yellowish light brown, silty sand with few cobbles/gravel

### SPECIAL NOTES:

Scanned at 18:20 4R/hr  
No metals found  
Backfilled upon completion

REV. No.	REVISIONS	REV. DATE	DESIGN BY	DRAWN BY	REVIEWED AND SIGNED BY
PROJECT No. PROJECT NUMBER			AutoCAD FILE: FILE NAME		
SCALE:			FIGURE No:		
SCALE			FIGURE No:		



GENERAL LOCATION: TT-212

PIT TREND: E-W, N-S

PIT FACE LOGGED: N, W

DATE: 4/27/11 1655 - 1715  
FIELD ENGINEER: C. Fuhay

## TEST PIT LOG

### LEGEND

SOIL HORIZON  
HORIZON CONTRACT  
GROUNDWATER LEVEL

SAMPLE No.	DEPTH	TIME
TT-212-GT1	Comp	1705
TT-212-GT2	Comp	1710

Pit Width: 2' / 2'  
Pit Length: 20' / 20'  
Pit Depth: 2' / 2'

SOIL  
UNIT

### SOIL DESCRIPTION AND EXCAVATION NOTES

N-S


Yellowish med. brown sand, some darker brown shale material (silt/sand), some gravel, no metal found

E-W

Black PVC at W end of trench, same as above otherwise

### SPECIAL NOTES:

Scanned at 14-16 gR/hr. Backfilled upon completion

REV. No.	REVISIONS	REV. DATE	DESIGN BY	DRAWN BY	REVIEWED AND SIGNED BY
			PROJECT No: PROJECT NUMBER AutoCAD FILE: FILE NAME SCALE: SCALE FIGURE No: FIGURE No		

GENERAL LOCATION: N. of NEMSA, TT-203  
 PIT TREND: NE-SW, SE-NW  
 PIT FACE LOGGED: NW, NE

DATE: 4/26/11, 16:10 - 16:50  
 FIELD ENGINEER: L. Fuhlig

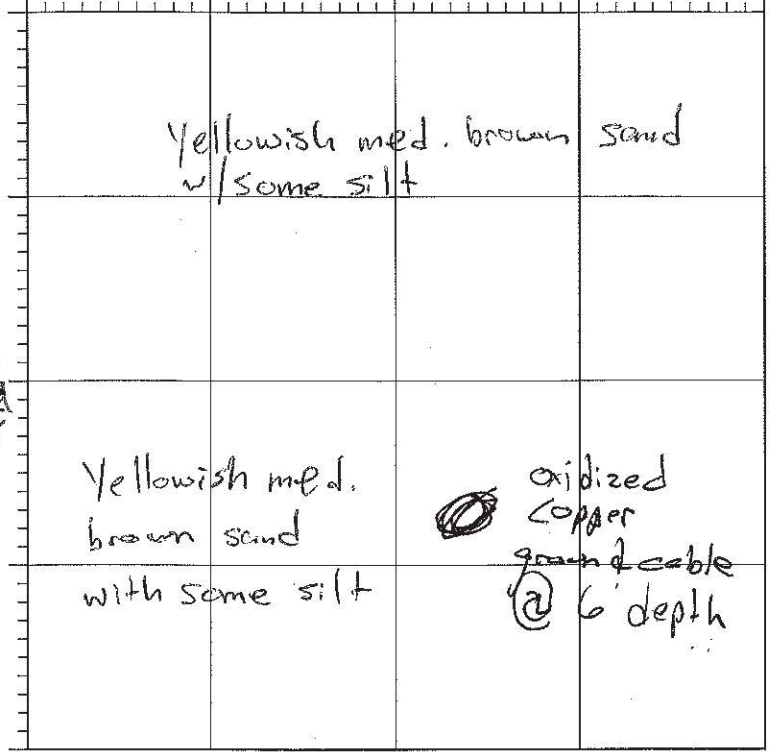
NE 5 10 15 20 SW

### TEST PIT LOG

### LEGEND

SOIL HORIZON  
 HORIZON CONTRACT  
 GROUNDWATER LEVEL

SAMPLE No.	DEPTH	TIME
yellowish med. brown sand w/ some silt	med. brown sand w/ some silt	
No Sample collected		



Pit Width: 2-3  
 Pit Length: 20  
 Pit Depth: 10

SOIL UNIT	SOIL DESCRIPTION AND EXCAVATION NOTES
NE-SW	Encountered rock at appx. 10'
SE-NW	strand of oxidized (green) copper ground cable at 6' Rock at 10'

### SPECIAL NOTES:

Backfilled trenches upon completion

REV. No.	REVISIONS	REV. DATE	DESIGN BY	DRAWN BY	REVIEWED AND SIGNED BY
PROJECT No. PROJECT NUMBER			AutoCAD FILE: FILE NAME		
SCALE:			FIGURE No:		
SCALE			FIGURE No:		



GENERAL LOCATION: NEMSA, JT-202  
 PIT TREND: E-W, N-S  
 PIT FACE LOGGED: N, E

DATE: 4/26/10 15:20 - 16:00  
 FIELD ENGINEER: L. Fuhrig

## TEST PIT LOG

### LEGEND

SOIL HORIZON  
 HORIZON CONTRACT  
 GROUNDWATER LEVEL

SAMPLE No.	DEPTH	TIME
gray w/green nodules, sand		

E-W N-S

Pit Width: 3', 3'  
 Pit Length: 12', 20'  
 Pit Depth: 6', 10'

SOIL  
UNIT

### SOIL DESCRIPTION AND EXCAVATION NOTES

E-W Gray material, 120-140  $\mu$ R underneath yel-brn soil cover  
 2" cable at appx. 5' depth  
 N-S Rock bolt, gray material, 130-140  $\mu$ R/hr

### SPECIAL NOTES:

Scanned at 120-140  $\mu$ R/hr w/ Ludlum 19. Backfilled trenches upon completion.

REV. No.	REVISIONS	REV. DATE	DESIGN BY	DRAWN BY	REVIEWED AND SIGNED BY
PROJECT No: PROJECT NUMBER			AutoCAD FILE: FILE NAME		
SCALE:			FIGURE No:		
SCALE					





310SG 17re

GENERAL LOCATION: Boneyard TT-224

PIT TREND: E-W

PIT FACE LOGGED: N

DATE: 4/26/11 13:43-1510

FIELD ENGINEER: L. Fuhrig

## TEST PIT LOG

### LEGEND

SOIL HORIZON  
HORIZON CONTRACT  
GROUNDWATER LEVEL

SAMPLE No.	DEPTH	TIME
Sand w/ silt, yel-b'n		
No sample collected		

EW NS

Pit Width: 6.6 10  
Pit Length: 20  
Pit Depth: 10

SOIL  
UNIT

SOIL DESCRIPTION AND EXCAVATION NOTES

Surface	Numerous rusted metal parts (cables, pipes, etc) in vicinity of TT224 on ground surface
E-W	Rusted cables, misc-metal parts, fire extinguisher, PVC, 1 gal, refrigerant can, rusted drum, chainlink fence, tarps white and yellow, hoses, braddis cloth (yellow), wood
N-S	More cables, cloth, fire electric cable/sheath
W	more large/mid-sized cables, majority of debris seems to be at a depth of 2-5' <u>E</u> drum, clothes, cables

### SPECIAL NOTES:

East pile is from E-W dig, West pile from N-S  
Max C. Scanned 16, 16, 16, 14, 16, 20, 20, 4R/hr. w/ Lysol in bkgsd 15-4R/hr  
more debris appears to be west, dig further in this direction

REV. No.	REVISIONS	REV. DATE	DESIGN BY	DRAWN BY	REVIEWED AND SIGNED BY
PROJECT No: PROJECT NUMBER			AutoCAD FILE: FILE NAME		
SCALE:			FIGURE No:		
SCALE					

