

APPENDIX B4.2

DEBRIS PHOTOGRAPHS



Metal Tank 8 ft. Diameter
Reference Point 1 (11/19/13)



1-inch Metal Cable Partially Buried
Reference Point 2 (11/19/13)



1-inch Metal Pipe
Reference Point 3 (11/19/13)



Metal Pipe and 6x6s
Reference Point 4 (11/19/13)



Metal Gate or Grate
Reference Point 5 (11/19/13)



Small Wood Building 5x5
Reference Point 6 (11/19/13)



Hose
Reference Point 7 (11/19/13)



Wood Pile
Reference Point 8 (11/19/13)



55-gallon Barrel
Reference Point 9 (11/19/13)



6x6s and 8x8s
Reference Point 10 (11/19/13)



2-inch PVC Pipe
Reference Point 11 (11/19/13)



8-inch Drisco and Plastic Pipe
Reference Point 12 (11/19/13)



6-inch Metal Pipe Approximately 50 ft
Reference Point 13 (11/19/13)



Catwalks/Walkways Mostly Metal Some Wood
Reference Point 14 (11/19/13)



2-inch Tubing
Reference Point 15 (11/19/13)



5-ft Diameter Metal Tanks
Reference Point 16 (11/19/13)



55-gallon Barrel Trash Cans
Reference Point 17 (11/19/13)



2.5-ft Diameter Plastic Pipe
Reference Point 18 (11/19/13)



12-inch Metal Pipe 8 ft Long
Reference Point 19 (11/19/13)



5-gallon Buckets Full Contents Unknown
Reference Point 20 (11/19/13)



Large Pile of 2x6s
Reference Point 21 (11/19/13)



Metal Tubing with Wires Sticking Out
Reference Point 22 (11/19/13)



Catwalks
Reference Point 23 (11/19/13)



2-inch Plastic Pipe
Reference Point 24 (11/19/13)



Drisco and Other Pipe Approximately 100 ft
Reference Point 25 (11/19/13)



Drisco 8 ft
Reference Point 26 (11/19/13)



Single Plastic Pipe
Reference Point 27 (11/19/13)



Metal Fence ~5 ft and Pallet Made of 6x6s
Reference Point 28 (11/19/13)



Drisco 15-20 feet
Reference Point 29 (11/19/13)



Wooden Corral
Reference Point 30 (11/19/13)



Metal Drum Pans 3.5 ft Diameter
Reference Point 31 (11/19/13)



Metal Track and 2-ft Pipe
Reference Point 32 (11/19/13)



2-inch Plastic Pipe
Reference Point 33 (11/19/13)



1/2-inch Metal Bar 3 ft Exposed
Reference Point 34 (11/19/13)



3-inch PVC Pipe
Reference Point 35 (11/19/13)



Wood Posts with Rad Monitor Boxes
Reference Point 36 (11/19/13)



Old Electrical Station
Reference Point 37 (11/19/13)



1/2-inch Plastic Tubing Coils
Reference Point 38 (11/19/13)



2.5-inch Plastic Pipe Approximately 40 ft.
Reference Point 39 (11/19/13)



Drisco 2.5-inch Pipe
Reference Point 40 (11/19/13)



Long Piece of Drisco
Reference Point 41 (11/19/13)



Long Piece of Drisco
Reference Point 42 (11/19/13)



4-inch Pipe
Reference Point 43 (11/19/13)



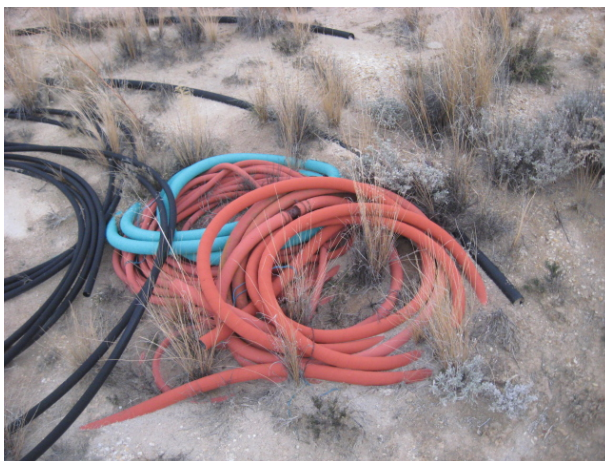
Drill Bit
Reference Point 44 (11/19/13)



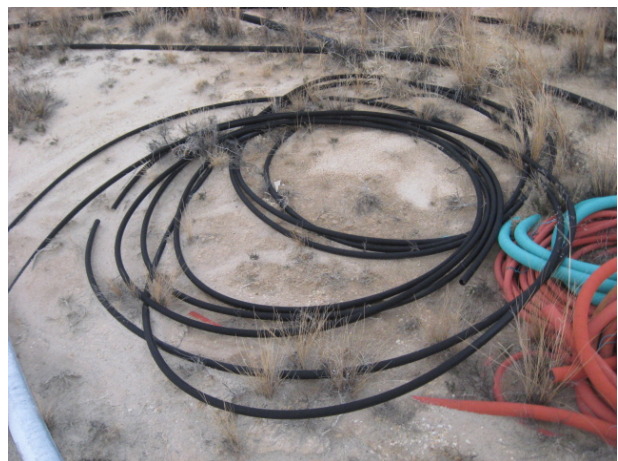
Electric Pole Debris
Reference Point 45 (11/19/13)



4-inch Fire Hose
Reference Point 46 (11/19/13)



Insulated Hose
Reference Point 47 (11/19/13)



1-inch Tubing
Reference Point 48 (11/19/13)



Insulated Hose and Fittings
Reference Point 49 (11/19/13)



Drisco and 1- and 2-inch Pipe
Reference Point 50 (11/19/13)



2-inch Pipe
Reference Point 51 (11/19/13)



Electrical Pole Top
Reference Point 52 (11/19/13)



Electric Station
Reference Point 53 (11/19/13)



Pipe Debris
Reference Point 54 (11/19/13)



Metal Drisco Fittings
Reference Point 55 (11/19/13)



4-ft Diameter Round Metal Screens
Reference Point 56 (11/19/13)



Gate Valves
Reference Point 57 (11/19/13)



Metal Pipe Junction/Pump
Reference Point 58 (11/19/13)



Fixed Drisco Pipe
Reference Point 59 (11/20/13)



5 ft Hoist Spool
Reference Point 60 (11/20/13)



55-gallon Barrel Full
Reference Point 61 (11/20/13)



Wood Debris 4x6s (2)
Reference Point 62 (11/20/13)



Drisco Joints
Reference Point 63 (11/20/13)



Electrical Panel
Reference Point 64 (11/20/13)



Drisco Pipe and Joints
Reference Point 65 (11/20/13)



Metal Pipe Rack 12 x 6 x 3 ft
Reference Point 66 (11/20/13)



55-gallon Barrels 7 Full No Labels
Reference Point 67 (11/20/13)



4-inch Hoses (2) and 2-inch Hoses (1) Attached to
Pipe Rack
Reference Point 68 (11/20/13)



Drisco Pipes ~30 ft
Reference Point 69 (11/20/13)



2-inch Poly Pipe
Reference Point 70 (11/20/13)



4-inch Poly Pipe
Reference Point 71 (11/20/13)



Approximately 100 ft of 4-inch Poly Pipe
Reference Point 72 (11/20/13)



Sprinkler Barrel
Reference Point 73 (11/20/13)



Sprinkler Barrels
Reference Point 74 (11/20/13)



2-inch Pipe Uncertain Length
Reference Point 75 (11/20/13)



Approximately 100 ft of Drisco 2-inch and 4-inch
Pipe. Fixed. Numerous
Reference Point 76 (11/20/13)



4-inch Poly Pipe
Reference Point 77 (11/20/13)



Small Metal Debris and Plastic
Reference Point 79 (11/20/13)



1 ft x 1 ft Concrete Chunk
Reference Point 80 (11/20/13)



Approximately 6 ft of ½-inch Metal Pipe with Plate
Reference Point 81 (11/20/13)



Dump Piles with Metal Debris
Reference Point 82 (11/20/13)



4-inch Poly Pipe
Reference Point 83 (11/20/13)



Pipe Joint? Cap?
Reference Point 84 (11/20/13)



20-gallon Plastic Jug
Reference Point 85 (11/20/13)



6-inch Plastic Pipe Approximately 3 ft Length
Reference Point 86 (11/20/13)



Small Anchor
Reference Point 87 (11/20/13)



15 ft x 15 ft Shed Contains Metal Pipes Plastic
Debris
Reference Point 88 (11/20/13)



15 ft x 15 ft Shed Contains Metal Pipes Plastic
Debris
Reference Point 88 (11/20/13)



10 ft x 15 ft Shed Containing Insulation
Reference Point 89 (11/20/13)



10 ft x 15 ft Shed Containing Insulation
Reference Point 89 (11/20/13)



12ft x 12 ft Metal Shed Containing Insulation
Reference Point 90 (11/20/13)



12 ft x 12 ft Metal Shed Containing Insulation
Reference Point 90 (11/20/13)



Valves Pipe Junctions Hoses
Reference Point 91 (11/20/13)



2-inch Hose and 4-inch Pipe and Fittings
Reference Point 92 (11/20/13)



1-inch PVC Pipe 100 ft(?) Lengths
Reference Point 93 (11/20/13)



3-inch Green Hose
Reference Point 94 (11/20/13)



30 ft Well Pipes and Stand
Reference Point 95 (11/20/13)



Gate Valves Pipes and T Posts
Reference Point 97 (11/20/13)



Drisco Junctions/Pipe
Reference Point 98 (11/20/13)



3-inch Hose and Gate Valves
Reference Point 99 (11/20/13)



3-inch Hose and Gate Valves
Reference Point 99 (11/20/13)



Drisco 2-inch and 4-inch Pipe Running Length of
NE Pond
Reference Point 100 (11/20/13)



2 Drisco Pipes and 2-inch and 4-inch Pipe Running
Length
Reference Point 101 (11/20/13)



Cement Septic Tank 10 ft Tall
Reference Point 132 (6/12/14)



Concrete Loading Dock
Reference Point 133 (6/12/14)



Downed Phone Poles
Reference Point 134 (6/12/14)



Wood Debris 30 cu. ft.
Reference Point 135 (6/12/14)



Metal Plates
Reference Point 136 (6/12/14)



Hoist Rope Spool
Reference Point 137 (6/12/14)



Electrical Cage 12 ft x 12 ft x 8 ft
Reference Point 138 (6/12/14)



Wood Debris 8 ft x 12 ft
Reference Point 139 (6/12/14)



4 ft x 4 ft x 4 ft Red Metal Box
Reference Point 140 (6/12/14)



20 ft x 25 ft Metal Building
Reference Point 141 (6/12/14)



4 ft x 10 ft Round Metal Tank
Reference Point 142 (6/12/14)



12 6 ft x 12 ft Posts
Reference Point 143 (6/12/14)



Wood Debris 200 cu. ft
Reference Point 144 (6/12/14)



25 ft x 25 ft x 12 ft Shed
Reference Point 145 (6/12/14)



8 ft x 15 ft x 10 ft Shed with Electrical
Reference Point 146 (6/12/14)



8 ft x 15 ft x 10 ft Shed with Electrical
Reference Point 147 (6/12/14)



Wood Wire Chicken Coop
Reference Point 148 (6/12/14)



8 ft x 4 ft Round Tank
Reference Point 149 (6/12/14)



Hoist House 12 ft x 12 ft x 12 ft
Reference Point 150 (6/12/14)



6 ft x 6 ft x 10 ft Small Building
Reference Point 151 (6/12/14)



Vent Tube Metal/Fiber 15
Reference Point 152 (6/12/14)



45 ft x 60 ft x 30 ft Building 2 Hoists Ins
Reference Point 153 (6/12/14)



100 ft x 35 ft Concrete Pad
Reference Point 154 (6/12/14)



25 ft x 25 ft Concrete Pad
Reference Point 155 (6/12/14)



10 ft x 4 ft x 3 ft Metal Thing
Reference Point 156 (6/12/14)



60 ft x 28 ft Loading Dock
Reference Point 157 (6/12/14)



Shaft Heater Parts
Reference Point 158 (6/12/14)



Metal Vent Tube 3
Reference Point 159 (6/12/14)



30 ft Diameter 30 ft Tall Tank
Reference Point 160 (6/12/14)



30 ft Diameter 30 ft Tall Tank HOT
Reference Point 161 (6/12/14)



Four 10 ft x 2 ft Fiberglass Troughs
Reference Point 162 (6/12/14)



10 ft x 5 ft Metal Pipe
Reference Point 163 (6/12/14)



Metal 15 ft x 10 ft x 12 ft Building
Reference Point 164 (6/12/14)



10 ft x 10 ft x 1.5 ft Metal
Reference Point 165 (6/12/14)



30 ft x 20 ft x 18 ft Building with Hoist
Reference Point 166 (6/12/14)



12 ft Vent Tube Metal 6
Reference Point 167 (6/12/14)



20 ft x 20 ft x 4 ft Concrete Debris Pile
Reference Point 168 (6/12/14)



Barrel Floats Hot
Reference Point 169 (6/12/14)



Concrete Debris ~20 ft x ~20 ft
Reference Point 170 (6/12/14)



Metal Debris Scrap
Reference Point 171 (6/12/14)



Catwalks 11e2
Reference Point 172 (6/12/14)



8 ft x 8 ft x 8 ft Sheet Metal Thing
Reference Point 173 (6/12/14)



Catwalks 11e2
Reference Point 174 (6/12/14)



Metal Debris
Reference Point 175 (6/12/14)



Metal Debris
Reference Point 176 (6/12/14)



15 ft Round 20 ft Tank
Reference Point 177 (6/12/14)



15 ft x 5 ft Tank
Reference Point 178 (6/12/14)



Rubber Tube 30 cu. ft
Reference Point 179 (6/12/14)



Hose and Pipes
Reference Point 180 (6/12/14)



Tires 100
Reference Point 181 (6/12/14)



12 ft x 4 ft Tank Debris Propeller
Reference Point 182 (6/12/14)



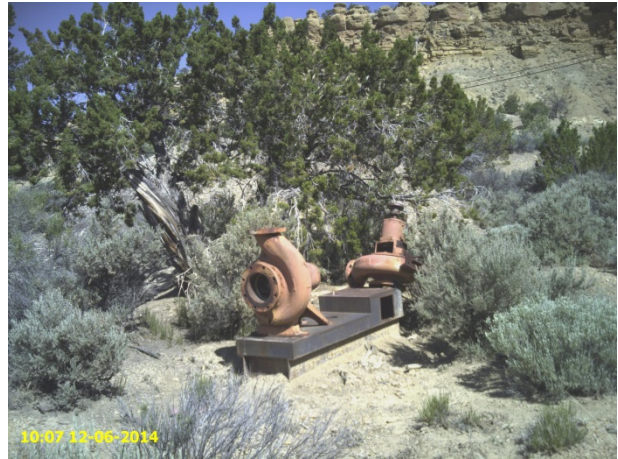
Metal Debris 30 cu ft
Reference Point 183 (6/12/14)



Metal Debris 30 cu. ft
Reference Point 184 (6/12/14)



Metal Pipes
Reference Point 185 (6/12/14)



Metal Debris
Reference Point 186 (6/12/14)



Metal Debris 20 cu. ft
Reference Point 187 (6/12/14)



Hoist Spool
Reference Point 188 (6/12/14)



Aluminum Cable Spool
Reference Point 189 (6/12/14)



Shaft Heater
Reference Point 190 (6/12/14)



15 ft x 10 ft Tank
Reference Point 191 (6/12/14)



Cable/Pipes
Reference Point 192 (6/12/14)



Wood Debris 30 cu. ft
Reference Point 193 (6/12/14)



Metal Debris 15 ft Tall
Reference Point 194 (6/12/14)



Chainlink Debris
Reference Point 195 (6/12/14)



Steel Cable
Reference Point 196 (6/12/14)



Barrels with Scrap (4)
Reference Point 197 (6/12/14)



Hoist Rope Spools (2)
Reference Point 198 (6/12/14)



12 ft x 12 ft x 10 ft Building
Reference Point 199 (6/12/14)



10 ft x 10 ft x 8 ft Metal Cooler
Reference Point 200 (6/12/14)



10 ft x 5 ft x 5 ft Building
Reference Point 201 (6/12/14)



Metal Debris Cable
Reference Point 202 (6/12/14)



12 ft Metal Tank
Reference Point 203 (6/12/14)



Wood Debris Poles 60 cu. ft
Reference Point 204 (6/12/14)



Metal Debris 80 cu ft
Reference Point 205 (6/12/14)



Transformer Fence
Reference Point 206 (6/12/14)



12 ft x 5 ft Concrete Foundation
Reference Point 207 (6/12/14)



10 ft x 15 ft x 10 ft Shed
Reference Point 208 (6/12/14)



Square Tube Frame
Reference Point 209 (6/12/14)



Metal Fence/Tubing
Reference Point 210 (6/12/14)



4 ft Vault Pipe Confined Sign
Reference Point 211 (6/12/14)



10 ft x 8 ft x 4 ft Metal Building
Reference Point 212 (6/12/14)



Metal Debris
Reference Point 213 (6/12/14)



Metal Support Arches 12 ft Lots
Reference Point 214 (6/12/14)



Pallets Wood Debris 100 cu ft
Reference Point 215 (6/12/14)



Wood Debris 60 cu. ft
Reference Point 216 (6/12/14)



Fiberglass Vent Tube Tons
Reference Point 217 (6/12/14)



Metal Vent Tube Junctions
Reference Point 218 (6/12/14)



Metal Building 12 ft x 20 ft x 3 ft Flat
Reference Point 219 (6/12/14)



24 ft Metal Trusses
Reference Point 220 (6/12/14)



Metal Building 12 ft x 20 ft x 3 ft
Reference Point 221 (6/12/14)



Sheet Metal Pipes
Reference Point 222 (6/12/14)



Sheet Metal Debris
Reference Point 223 (6/12/14)



30 ft Tall Tank with Tar in Bottom
Reference Point 224 (6/12/14)



30 ft Tall Tank with Tar in Bottom
Reference Point 224 (6/12/14)



Tank Pipes
Reference Point 225 (6/12/14)



Hydrant
Reference Point 226 (6/12/14)



Vault
Reference Point 227 (6/12/14)



2 ft x 2 ft x 1 ft Concrete Block Vault
Reference Point 228 (6/12/14)



Spillway
Reference Point 229 (6/12/14)



Active Pump House
Reference Point 230 (6/12/14)



Vault 20 ft x 20 ft Foundation
Reference Point 231 (6/12/14)



Metal Debris and Tank
Reference Point 233 (6/12/14)



Green Tank 5 ft x 12 ft
Reference Point 234 (6/12/14)



Concrete Cradle 20 ft x 12 ft x 2 ft Four
Reference Point 235 (6/12/14)



6 ft x 6 ft x 3 ft Wood Building
Reference Point 236 (6/12/14)



10 ft x 10 ft x 5 ft Wood Structure
Reference Point 237 (6/12/14)



25 ft x 8 in x 4 in Wood (7)
Reference Point 238 (6/12/14)



60 ft Beams (12)
Reference Point 239 (6/12/14)



Metal Debris 100 cu ft
Reference Point 240 (6/12/14)



Hoses
Reference Point 241 (6/12/14)



Metal Racks
Reference Point 242 (6/12/14)



Tall Tank 15 ft Diameter 15 ft
Reference Point 243 (6/12/14)



Metal Debris Fan
Reference Point 244 (6/12/14)



Concrete Metal Debris 200 cf
Reference Point 245 (6/12/14)



Cradles 8 ft x 20 ft Fou 5 ft x 15 ft x 2 ft
Reference Point 246 (6/12/14)



Concrete Debris 20 ft x 40 ft x 2 ft
Reference Point 247 (6/12/14)



Pipe Fittings
Reference Point 248 (6/12/14)



Diesel Tank 15 ft x 5 ft
Reference Point 249 (6/12/14)



Metal Debris
Reference Point 250 (6/12/14)



Concrete Debris
Reference Point 251 (6/12/14)



Pole Barn
Reference Point 252 (6/12/14)



Metal Debris ~1000 cf
Reference Point 253 (6/12/14)



Concrete Debris
Reference Point 254 (6/12/14)



Cattle Guards (2) 8 ft x 20 ft
Reference Point 255 (6/12/14)



Hose
Reference Point 256 (6/12/14)



Metal Debris
Reference Point 257 (6/12/14)



Pallets Metal Debris
Reference Point 258 (6/12/14)



Pipe and Screen
Reference Point 259 (6/12/14)



Wood Debris
Reference Point 260 (6/12/14)



2-inch PVC
Reference Point 261 (6/12/14)



55-gallon Barrels Empty (65)
Reference Point 262 (6/12/14)



Foundation 50 ft x 30 ft x 2 ft
Reference Point 263 (6/12/14)



Concrete Debris Partially Buried
Reference Point 264 (6/12/14)



Large Debris Pit
Reference Point 265 (6/12/14)



Orange Sewer Pipe Haz Metal
Reference Point 266 (6/12/14)



PVC Pipe 25 ft
Reference Point 267 (6/12/14)



Dump Truck Body
Reference Point 268 (6/12/14)



Metal Post Debris
Reference Point 269 (6/12/14)



Metal Debris ~350 cf
Reference Point 270 (6/12/14)



Tires 4 on Axles
Reference Point 271 (6/12/14)



6 ft x 8 ft Concrete Pipe
Reference Point 272 (6/12/14)



Metal Debris
Reference Point 273 (6/12/14)



Metal Debris
Reference Point 274 (6/12/14)



Metal Debris
Reference Point 275 (6/12/14)



Metal Debris
Reference Point 276 (6/12/14)



Metal Debris Pallets Tire
Reference Point 277 (6/12/14)



Yellow Metal Container
Reference Point 278 (6/12/14)



Hoist Cage
Reference Point 279 (6/12/14)



Metal Debris Wood Fiberglass
Reference Point 278 (6/12/14)



Metal Debris
Reference Point 279 (6/12/14)



Metal Pipe 20 ft
Reference Point 280 (6/12/14)