

ACCELERATED DOCUMENT DISTRIBUTION SYSTEM

REGULATORY INFORMATION DISTRIBUTION SYSTEM (RIDS)

ACCESSION NBR: 9303180179 DOC. DATE: 93/03/09 NOTARIZED: NO DOCKET #
 FACIL: 50-261 H.B. Robinson Plant, Unit 2, Carolina Power & Light C 05000261
 50-400 Shearon Harris Nuclear Power Plant, Unit 1, Carolina 05000400
 50-325 Brunswick Steam Electric Plant, Unit 1, Carolina Powe 05000325

AUTH. NAME AUTHOR AFFILIATION
 WATSON, R.A. Carolina Power & Light Co.
 RECIP. NAME RECIPIENT AFFILIATION
 Document Control Branch (Document Control Desk)

SUBJECT: Discusses organization changes re increasing line-mgt
 accountability for operations, improving effectiveness of
 support functions & increasing functional consistency among
 three nuclear sites.

DISTRIBUTION CODE: M006D COPIES RECEIVED: LTR 1 ENCL 1 SIZE: 5
 TITLE: Changes of Personnel/Address

NOTES: Application for permit renewal filed. 05000400 A

RECIPIENT ID CODE/NAME	COPIES LTTR ENCL	RECIPIENT ID CODE/NAME	COPIES LTTR ENCL
PD2-1 LA	1 1	PD2-1 PD	1 0
MOZAFARI, B	1 1	LE, N	1 1
MILANO, P	1 1		
INTERNAL: ACRS	1 1	ADM STEVENSON, L	1 1
ASLBP	1 1	CAA-16B-13	1 1
OC/LFMB	1 0	OGC/HDS2	1 1
OGC/HDS1	1 1	REG FILE 01	1 1
SECY/DSB	1 1		
EXTERNAL: NRC PDR	1 1		

NOTE TO ALL "RIDS" RECIPIENTS:

PLEASE HELP US TO REDUCE WASTE! CONTACT THE DOCUMENT CONTROL DESK,
 ROOM P1-37 (EXT. 504-2065) TO ELIMINATE YOUR NAME FROM DISTRIBUTION
 LISTS FOR DOCUMENTS YOU DON'T NEED!

TOTAL NUMBER OF COPIES REQUIRED: LTTR 15 ENCL 13



Carolina Power & Light Company

P. O. Box 1551 • Raleigh, N. C. 27602

MAR 09 1993

R. A. WATSON
Senior Vice President
Nuclear Generation

SERIAL: NLS-93-074

United States Nuclear Regulatory Commission
ATTENTION: Document Control Desk
Washington, DC 20555

H. B. ROBINSON STEAM ELECTRIC PLANT, UNIT NO. 2
DOCKET NO. 50-261/LICENSE NO. DPR-23

SHEARON HARRIS NUCLEAR POWER PLANT
DOCKET NO. 50-400/LICENSE NO. NPF-63

BRUNSWICK STEAM ELECTRIC PLANT, UNIT NOS. 1 AND 2
DOCKET NOS. 50-325 AND 50-324/LICENSE NOS. DPR-71 AND DPR-62

ORGANIZATION CHANGES

Gentlemen:

As described in our correspondence to you on November 30, 1992 (NLS-92-317), the Nuclear Generation Group has undertaken an organizational study as part of our Corporate Improvement Initiatives (Initiative No. 1). The initiatives are intended to lead us to world class performance in safety, generation, and cost. The organization changes will prepare the NGG to meet these goals by:

- o increasing line-management accountability for operations,
- o improving the effectiveness of support functions, and
- o increasing functional consistency among the three nuclear sites.

CP&L has completed the initial phases of the study regarding the overall organizational structure for the Nuclear Generation Group. The organizational structure covers primary functions and units at the three nuclear plants and functions in the four corporate departments. Summary charts are included as Attachment 1 for your information. The specific organizational changes will be incorporated into the Final Safety Analysis Report for each of the nuclear facilities in a manner and timeframe consistent with the requirements of 10 CFR 50.71(e)(4). We will keep you informed as we make the transition into the new structure for the Nuclear Generation Group, finalize the implementation plan, and staff the key positions.

Questions regarding this matter may be referred to D. C. McCarthy at (919) 546-6901.

Yours very truly,

R. A. Watson
R. A. Watson

180017

DCM/SDC

Attachment

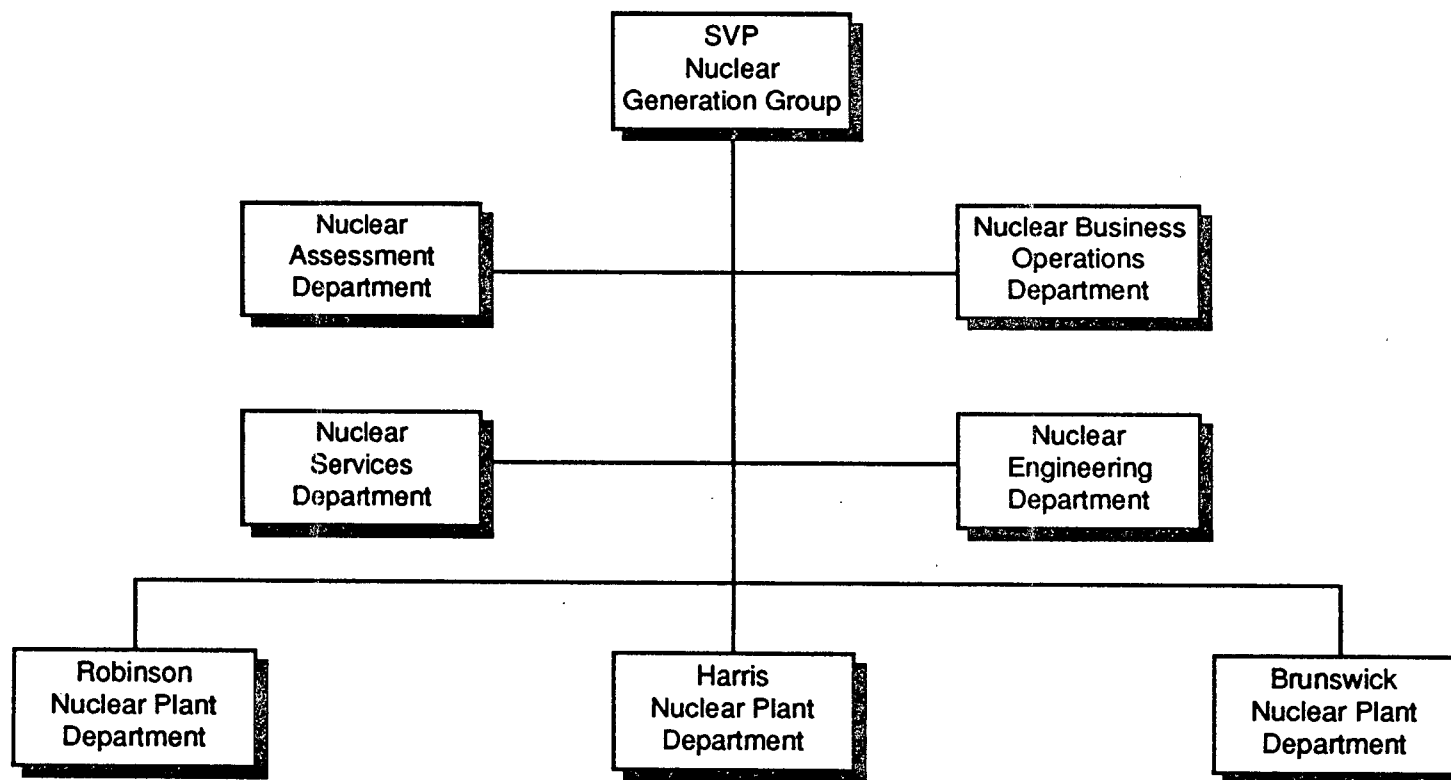
cc: Mr. S. D. Ebnetter Ms. B. L. Mozafari
Mr. L. W. Garner Mr. R. L. Prevatte
Mr. N. B. Le Mr. J. E. Tedrow
Mr. P. D. Milano

9303180179 930309
PDR ADDCK 05000261
H PDR

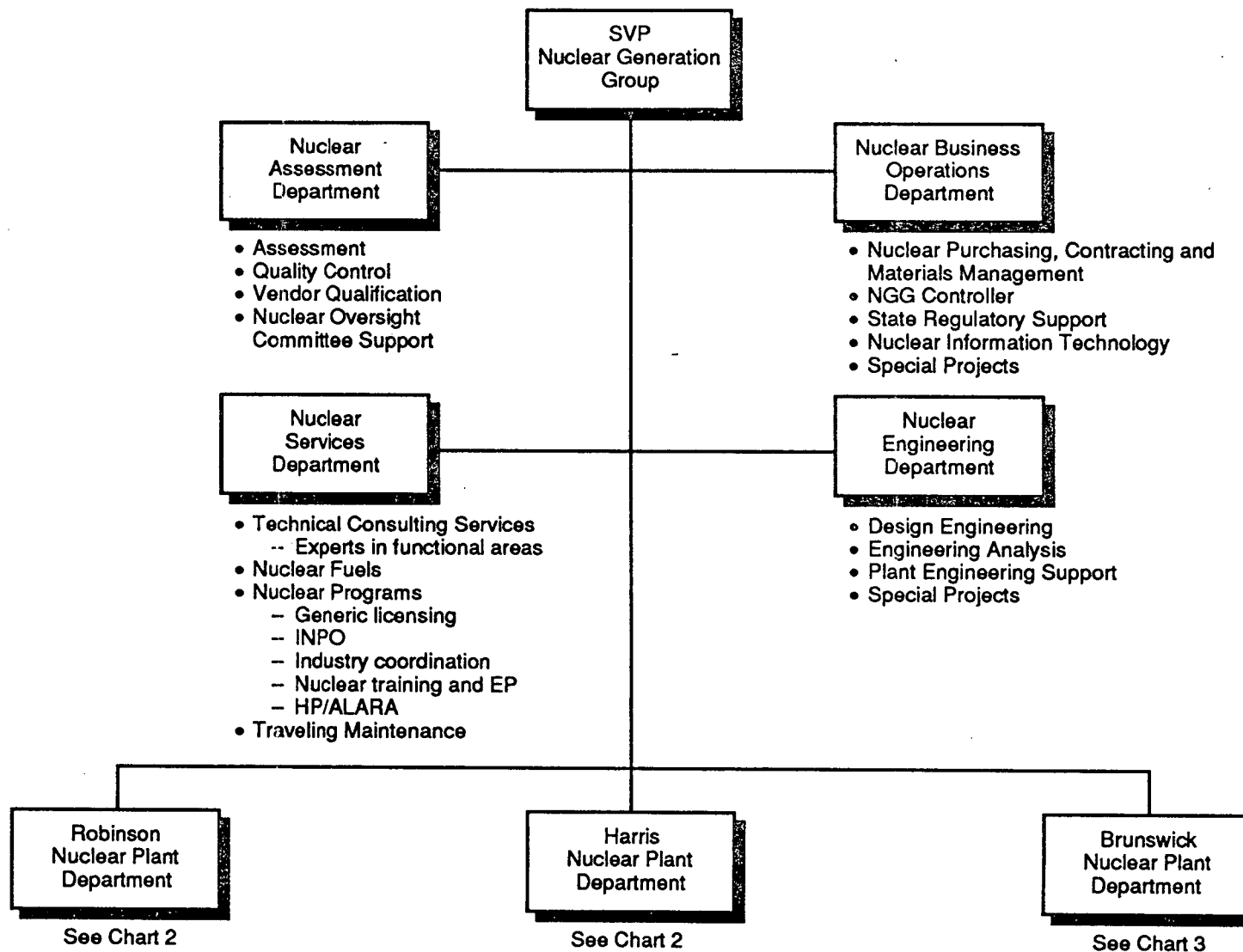
modk

Nuclear Organization Study

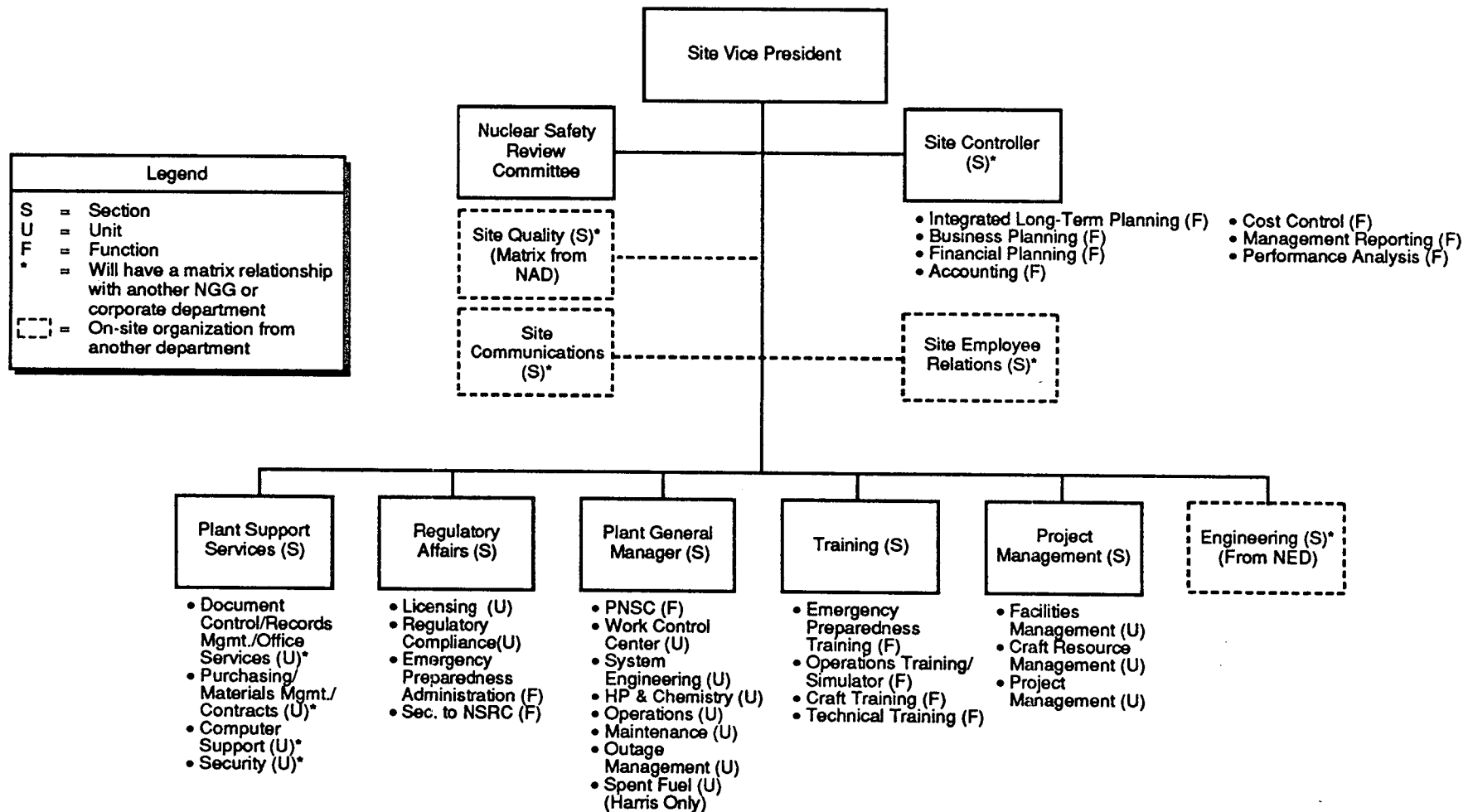
Overall Structure



Overall Structure of Nuclear Generation Group (Primary Functions Listed Under Departments)

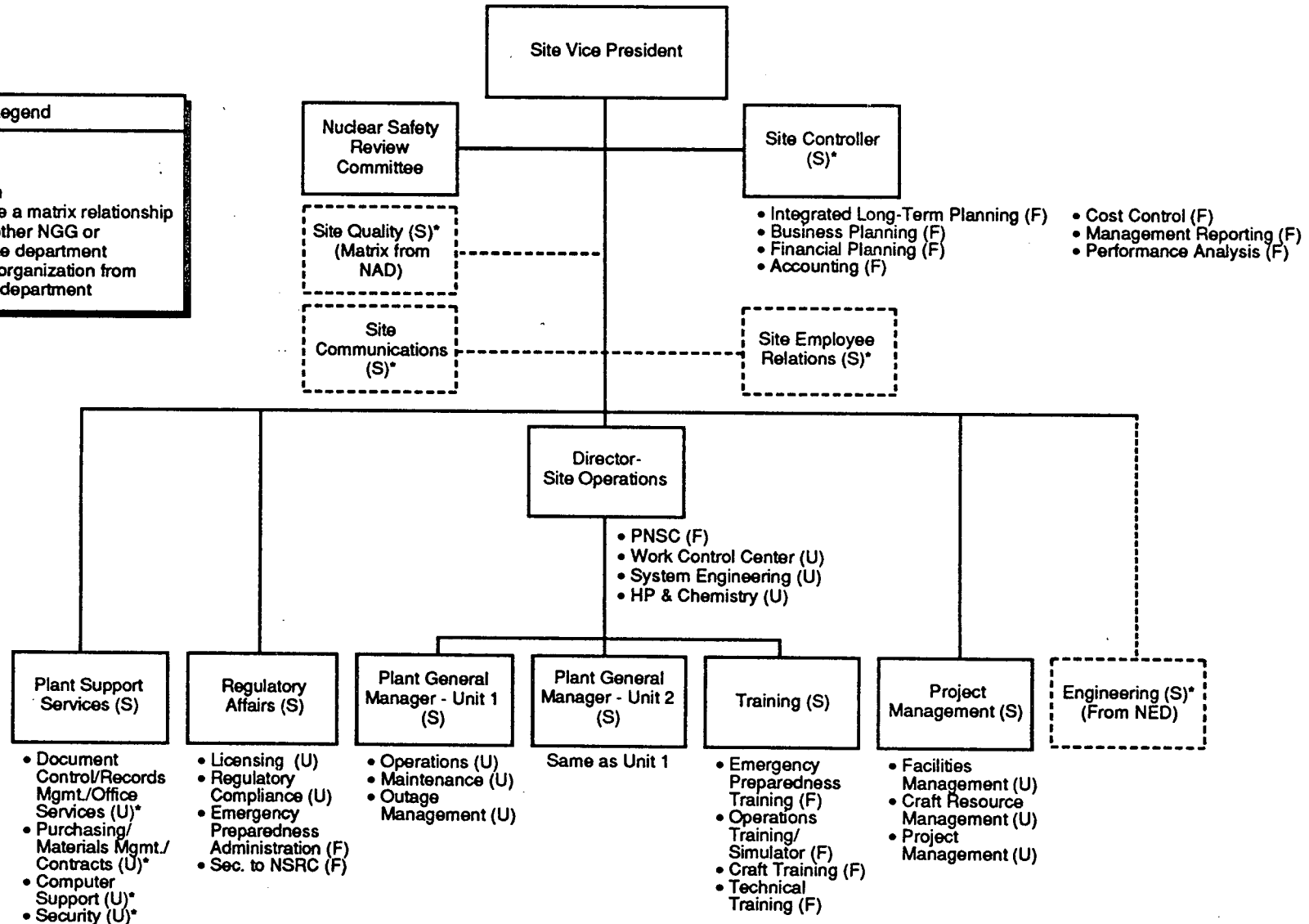
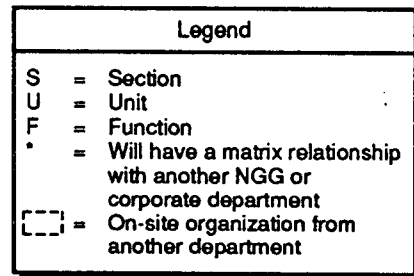


Organization Structure -- Harris and Robinson Nuclear Plants (Chart 2)



Functions may be either organizational units or performed by direct contributors.

Organization Structure -- Brunswick Nuclear Plant (Chart 3)



Functions may be either organizational units or performed by direct contributors.