

REGULATORY INFORMATION DISTRIBUTION SYSTEM (RIDS)

ACCESSION NBR: 8305250249 DOC. DATE: 83/05/23 NOTARIZED: NO DOCKET #  
 FACIL: 50-261 H. B. Robinson Plant, Unit 2, Carolina Power and Light 05000261  
 AUTH. NAME AUTHOR AFFILIATION  
 EURY, L.W. Carolina Power & Light Co.  
 RECIP. NAME RECIPIENT AFFILIATION  
 VARGA, S.A. Operating Reactors Branch 1

SUBJECT: Forwards Rev 1 to figures from 830331 final steam generator  
 repair rept. Corrected page list & figure list encl. *REV 6/2/83*

DISTRIBUTION CODE: A001S COPIES RECEIVED: LTR 1 ENCL 1 SIZE: 19 *718*  
 TITLE: OR Submittal: General Distribution

NOTES:

RECIPIENT ID CODE/NAME	COPIES LTTR ENCL	RECIPIENT ID CODE/NAME	COPIES LTTR ENCL
NRR ORB1 BC 01	7 7		
INTERNAL: ELD/HDS1	1 0	NRR/DE/MTEB	1 1
NRR/DL DIR	1 1	NRR/DL/ORAB	1 0
NRR/DSI/METB	1 1	NRR/DSI/RAB	1 1
<u>REG FILE</u> 04	1 1	RGN2	1 1
EXTERNAL: ACRS 09	6 6	LPDR 03	1 1
NRC PDR 02	1 1	NSIC 05	1 1
NTIS	1 1		



Carolina Power & Light Company  
MAY 23 1983

Serial: LAP 83-177

Director of Nuclear Reactor Regulation  
Attention: Mr. Steven A. Varga, Chief  
Operating Reactors Branch No. 1  
Division of Licensing  
United States Nuclear Regulatory Commission  
Washington, DC 20555

H. B. ROBINSON STEAM ELECTRIC PLANT, UNIT NO. 2  
DOCKET NO. 50-261  
LICENSE NO. DPR-23  
REVISION 1 - FINAL STEAM GENERATOR REPAIR REPORT  
REVISED FIGURES

Dear Mr. Varga:

In Carolina Power & Light Company's (CP&L) letter to you dated March 31, 1983, Serial No. LAP-83-75, transmitting Revision 1 of the Final Steam Generator Repair Report (FSGRR), CP&L stated that it would provide to you a Revision 1 to selected figures from the FSGRR. The purpose of this letter is to provide those revised figures, to correct an error on the effective page list, and to revise the effective page list and the list of figures to reflect the revised figures.

Attachment 1 lists the figures being revised and a brief description of the changes involved. Also attached is an instruction sheet describing the page changeouts to be made to the FSGRR, a revised list of effective pages, and the revised figures. These instructions should be followed to update the FSGRR to current status.

Should you have any questions regarding this material please contact a member of my staff.

Yours very truly,



L. W. Eury  
Senior Vice President  
Power Supply

A001

8305250249 830523  
PDR ADOCK 05000261  
P PDR

DCS/ce (6848DCS)  
Attachment

cc: Dr. David L. Hetrick (ASLB) Mr. B. A. Matthews (Hartsville Group)  
Mr. Myron Karman, Esquire (NRC-ELD) Mr. J. P. O'Reilly (NRC-RII)  
Ms. Jacqueline Kirven (CFDC) Mr. G. Requa (NRC)  
Dr. Jerry R. Kline (ASLB) Dr. John Ruoff (Hartsville Group)  
Ms. Karen E. Long, Esquire (PS-NCUC) Mr. George F. Trowbridge, P.C.  
Mr. Morton B. Marquies (Chm.-ASLB) Mr. Steve Weise (NRC-HBR)

ATTACHMENT 1  
REVISED FIGURE LIST

<u>Figure No.</u>	<u>Major Changes</u>
3.0-2	Removes upper dome from frames B through E. Adds upending/downending assembly and low profile saddles.
3.0-4, Sheet 1	Removes lifting frame assembly, revises design of transfer skid, and adds upending/downending assembly.
3.0-5, Sheet 2	Removes lifting frame assembly and adds a crane.
3.0-6	New drawing - Removal sequence for upper domes.
3.1-1	Revises location of new SG storage area and tomb. Revises site plan for new structures.
3.1-2	Removes dress out area due to new crane location, adds upper assembly storage stands.

H. B. ROBINSON UNIT NO. 2  
STEAM GENERATOR REPAIR REPORT  
LIST OF FIGURES

<u>Figure</u>	<u>Title</u>	<u>Page</u>
2.2-1	STEAM GENERATOR LOWER ASSEMBLY	17
2.2-2	TUBE-TO-TUBESHEET JUNCTURE	18
2.2-3	FLOW DISTRIBUTION BAFFLE AND BLOWDOWN	19
2.2-4	QUATREFOIL TUBE SUPPORT PLATE SCHEMATIC	20
3.0-1	OUTAGE SEQUENCE	70
3.0-2	REMOVAL SEQUENCE	71
3.0-3	DELETED BY REVISION NO. 1	72
3.0-4	REMOVAL THROUGH HATCH, SHEET 1	73
3.0-5	REMOVAL THROUGH HATCH, SHEET 2	74
3.1.1	SITE PLAN	75
3.1-2	PLAN VIEW ENTRY/EXIT FACILITY AT CB EQUIPMENT HATCH	76
3.1-3	MOVEMENT PATHWAYS	77
3.2-0	PIPING CUTS - MAIN STEAM AND FEEDWATER LINES	78
3.4-1	TYPICAL WORK AREA EXPOSURE RATES	79
3.4-2	AIRBORNE RELEASE CALCULATION FOR CHANNEL HEAD CUT	80

H. B. Robinson Unit No. 2  
Steam Generator Repair Report

Revision No. 1 Instruction Sheet - Figure Changes

This revision consists of replacement pages for several of the figures in the H. B. Robinson Unit No. 2 Steam Generator Repair Report. The following page removals and insertions should be made to incorporate this revision into the report.

Remove  
Existing Pages

Entire Effective Page  
List (3 pages)

vii

Figure 3.0-2

Figure 3.0-4

Figure 3.0-5

-

Figure 3.1-1

Figure 3.1-2

Insert  
Existing Pages

Entire Effective Page  
List (3 pages)

vii

Figure 3.0-2

Figure 3.0-4

Figure 3.0-5

Figure 3.0-6

Figure 3.1-1

Figure 3.1-2

# NOTES

## FRAME 'A'

REMOVE APPROX. 2' 0" OF UPPER PORTION OF GENERATOR BIOLOGICAL SHIELD WALL - ATTACH RIGGING - CUT UPPER DOME LOOSE.

## FRAME 'B'

LIFT AND STORE UPPER DOME IN DESIGNATED AREA - ATTACH RADIATION SHIELD TO TOP OF LOWER ASSEMBLY WHILE IT'S STILL IN PLACE - CUT LOWER ASSEMBLY AT BASE -

## FRAME 'C'

LIFT LOWER ASSEMBLY TO OPERATING FLOOR LEVEL AND ATTACH RADIATION SHIELD TO BOTTOM OF ASSEMBLY WHILE SUPPORTED BY CRANE - MOVE TO FLOOD OPENING -

## FRAME 'D'

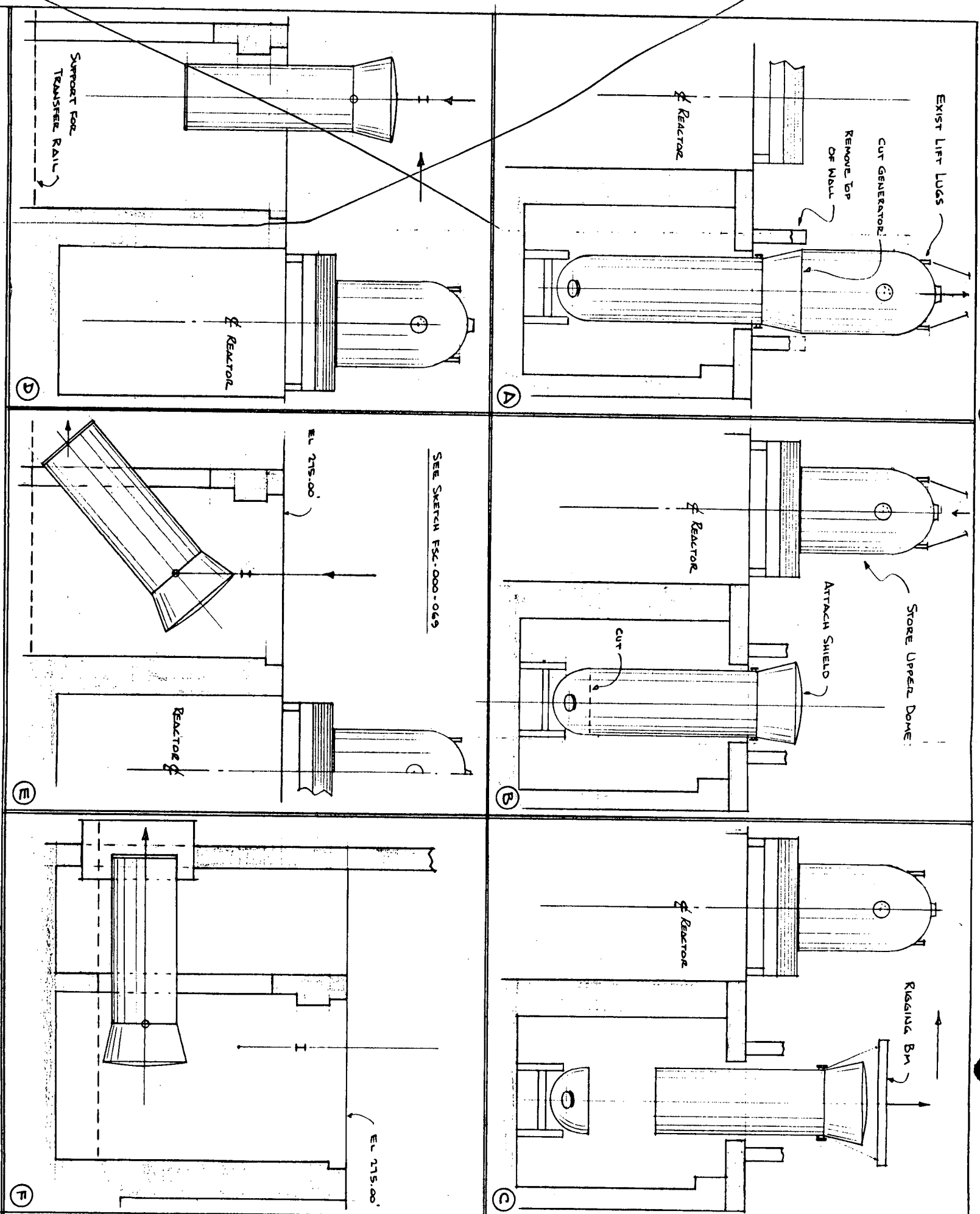
LOWER THE ASSEMBLY THRU FLOOD OPENING -

## FRAME 'E'

AS ASSEMBLY IS LOWERED TO THE TRANSFER TRACK, THE BOTTOM WILL BE WINCHED TOWARD THE EQUIPMENT EXIT HATCH.

## FRAME 'F'

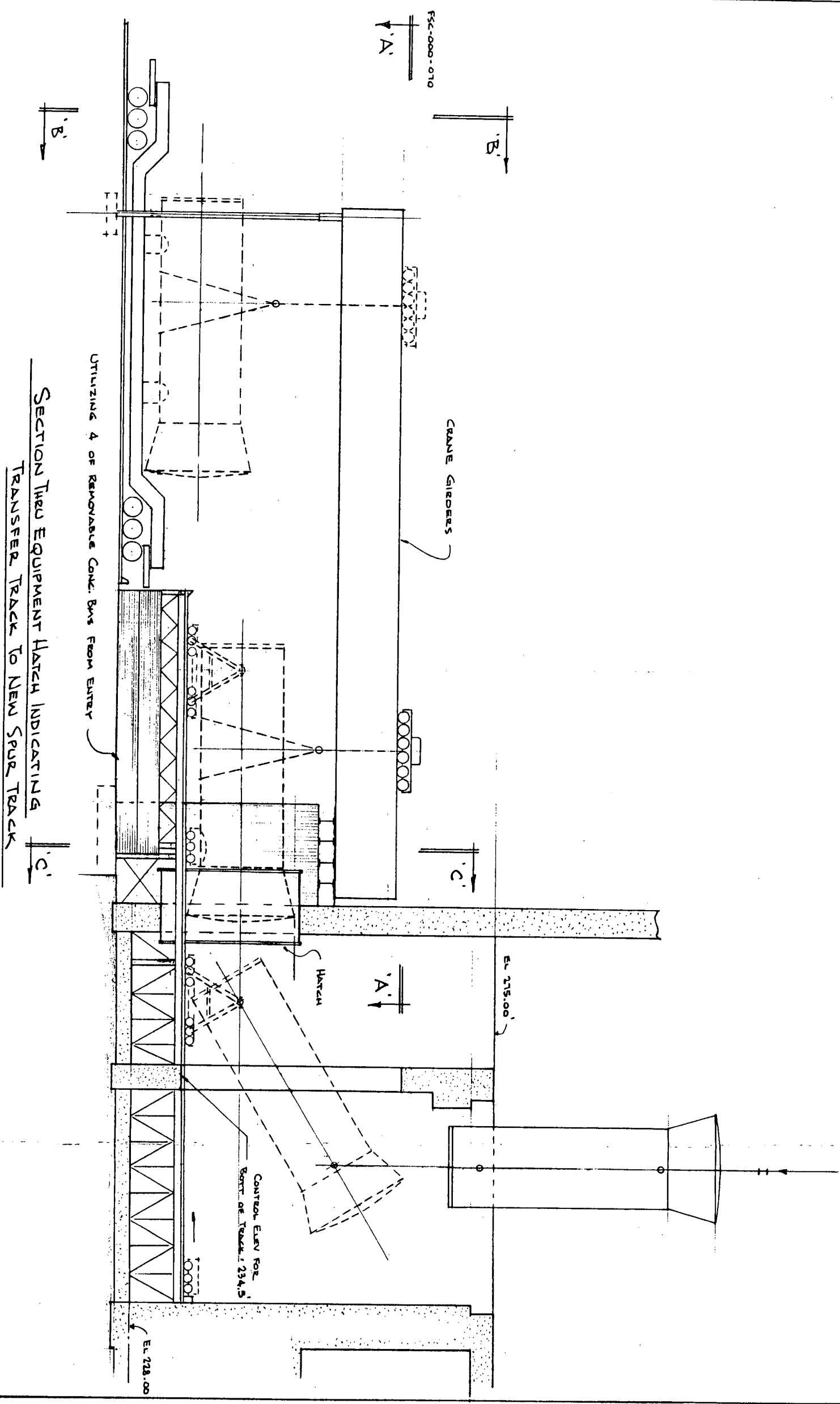
WITH ASSEMBLY RESTING ON TROLLEYS, THE RIGGING WILL BE DETACHED AND IT WILL BE ROLLED OUTSIDE.



R. B. ROBINSON UNIT NO. 2  
STEAM GENERATOR REPAIR REPORT

REMOVAL SEQUENCE

FIGURE 3.0-2

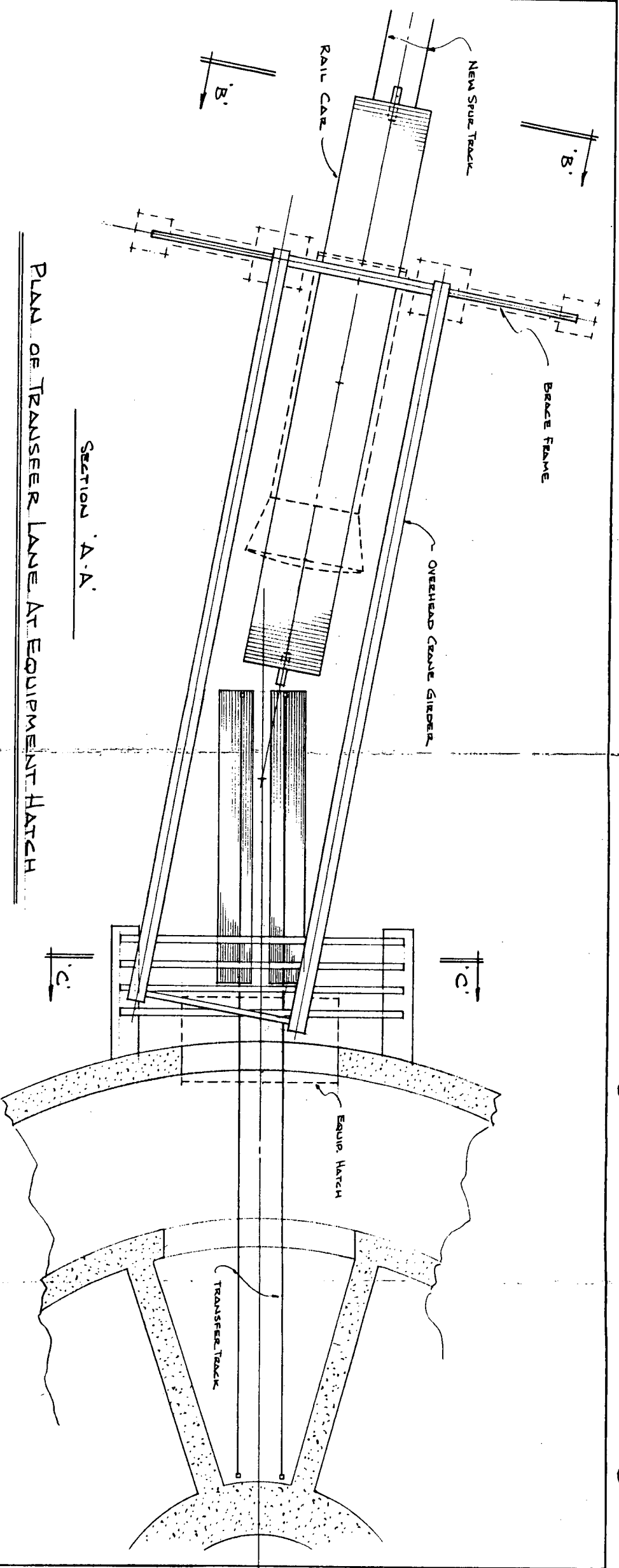


SECTION THRU EQUIPMENT HATCH INDICATING  
TRANSFER TRACK TO NEW SPUR TRACK

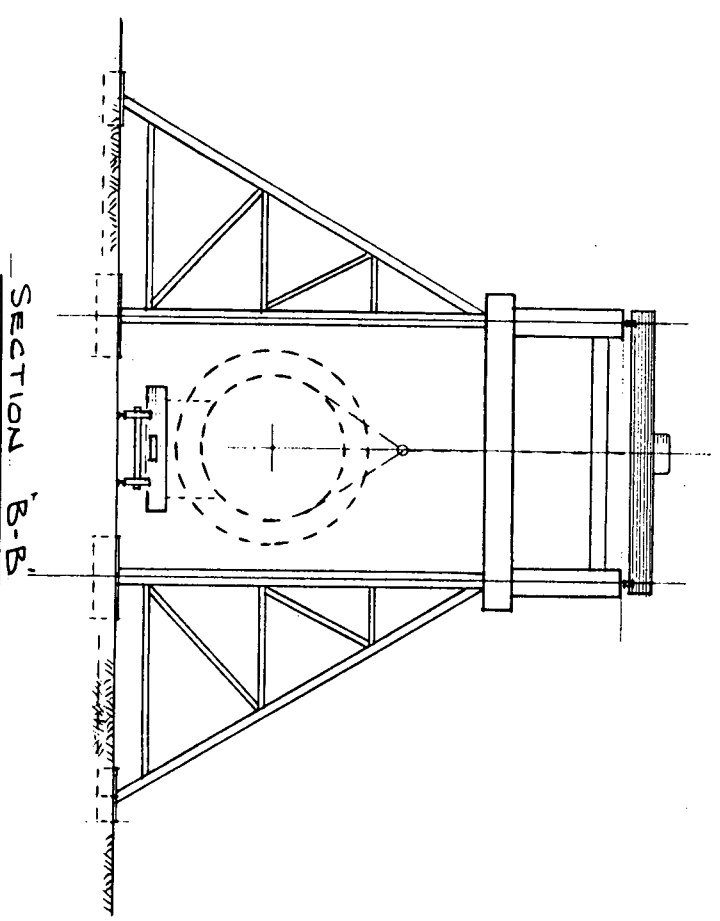
H. B. ROBINSON UNIT NO. 2  
STEAM GENERATOR REPAIR REPORT

REMOVAL THROUGH HATCH

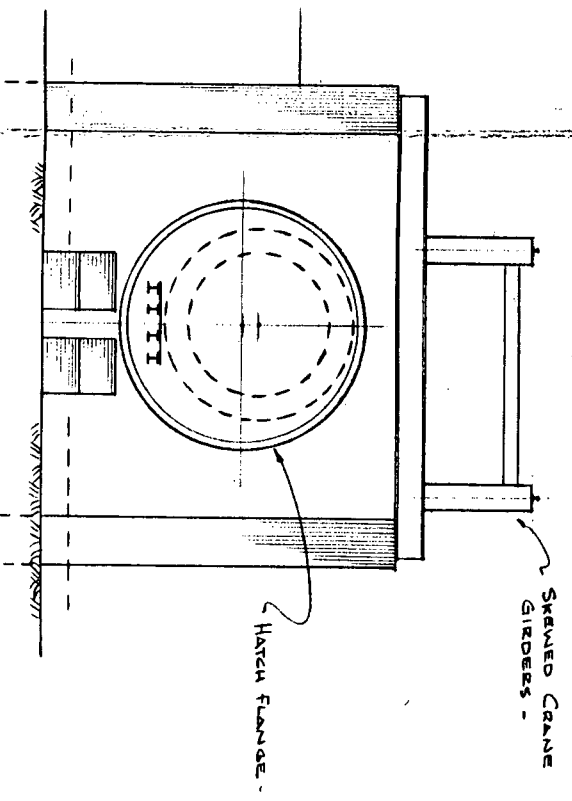
FIGURE 3.0-4, SHEET 1



PLAN OF TRANSVERSE LANE AT EQUIPMENT HATCH



SECTION 'B-B'



SECTION 'C-C'

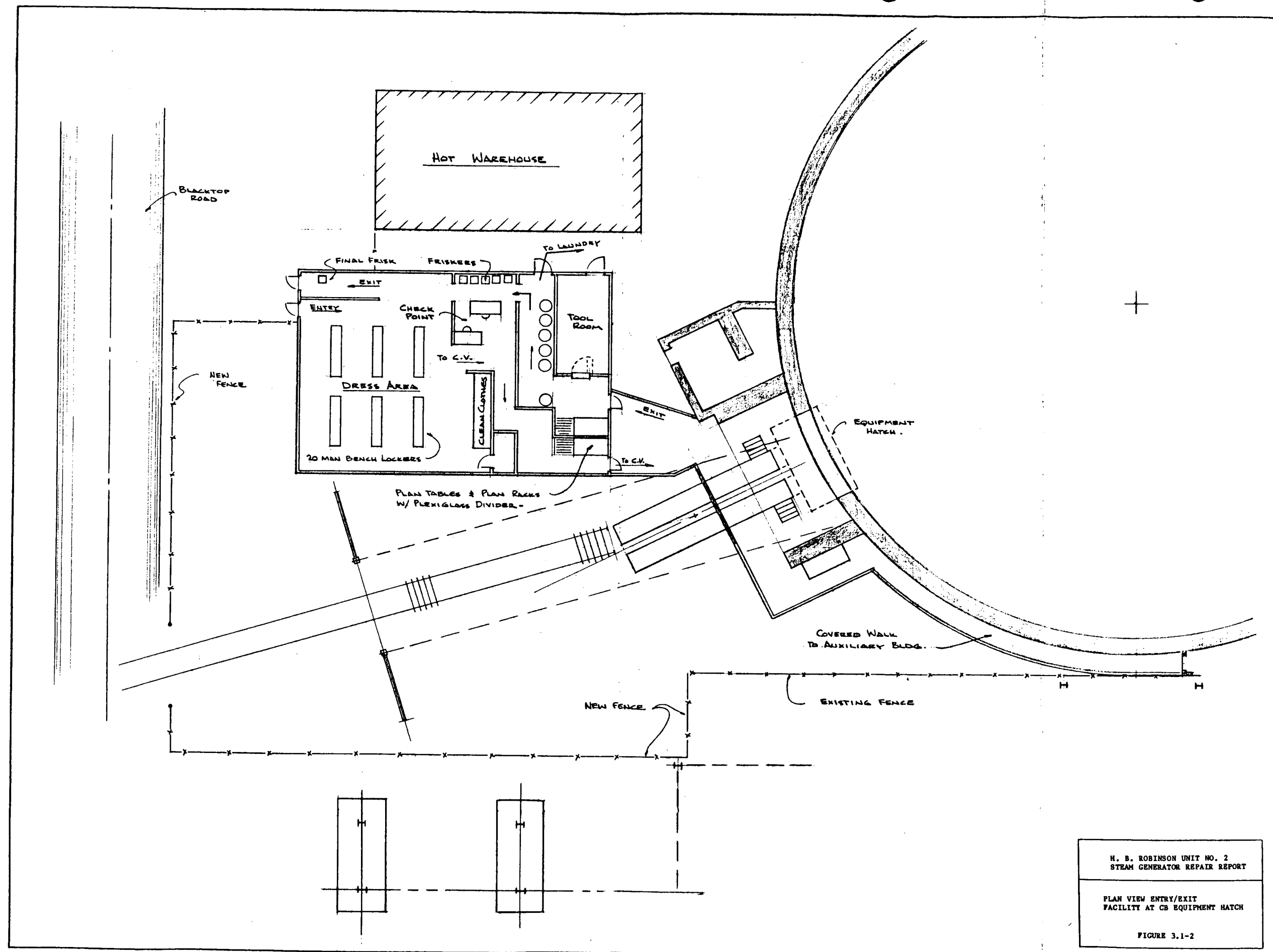
H. B. ROBINSON UNIT NO. 2  
STEAM GENERATOR REPAIR REPORT

REMOVAL THROUGH HATCH

FIGURE 3.0-5, SHEET 2







H. B. ROBINSON UNIT NO. 2  
STEAM GENERATOR REPAIR REPORT

PLAN VIEW ENTRY/EXIT  
FACILITY AT CB EQUIPMENT HATCH

FIGURE 3.1-2