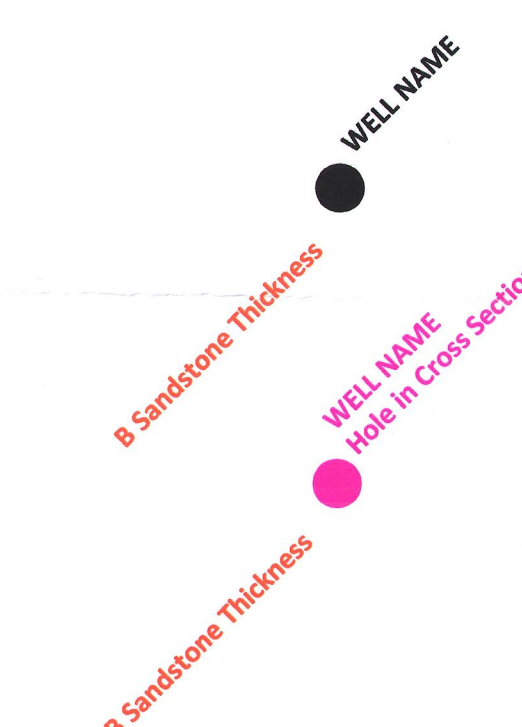
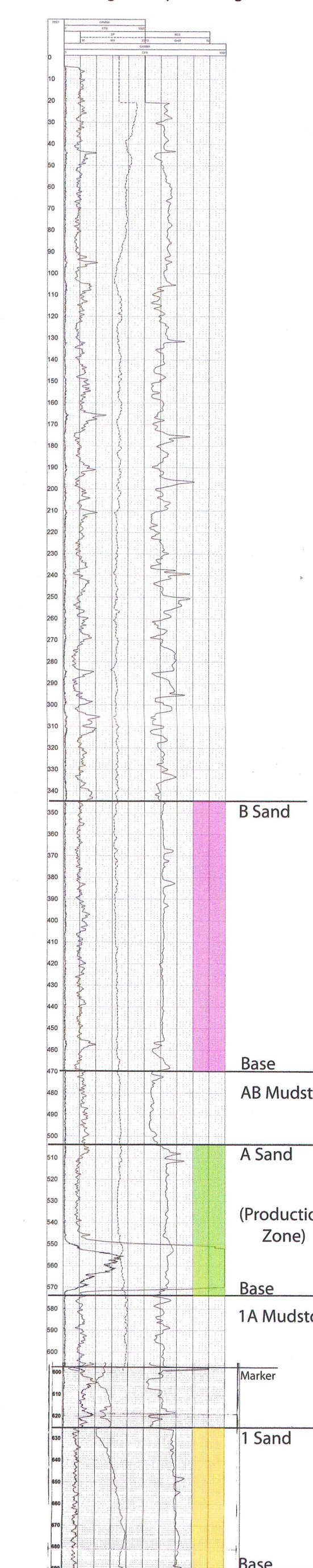
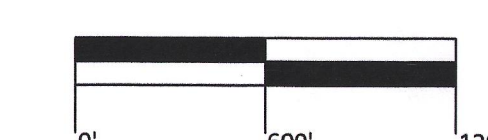


Jane Dough Composite Log



The well names on this map have been modified due to the scale of the map. The first 4 characters on most well names were omitted. For example A36-29-001 is labeled as 29-001. All hole locations are labeled with unique names.



Uranerz
ENERGY CORPORATION
1701 EAST "E" STREET P.O. BOX 50850
CASPER, WYOMING, USA 82505-0850
PHONE 307.265.8800 FAX 307.265.8806

NICHOLS RANCH ISR PROJECT
EXHIBIT JD-D5-16
JANE DOUGH UNIT
B SAND ISOPACH

BY: DALTON TIMM DATE: 02-07-2014
REV. # 00 REV. DATE:
SCALE: 1" = 600' SHEET: 1 OF 1
CONTOUR INTERVAL: 20'
FILE LOCATION: T:\VT\Drafting\JaneDough