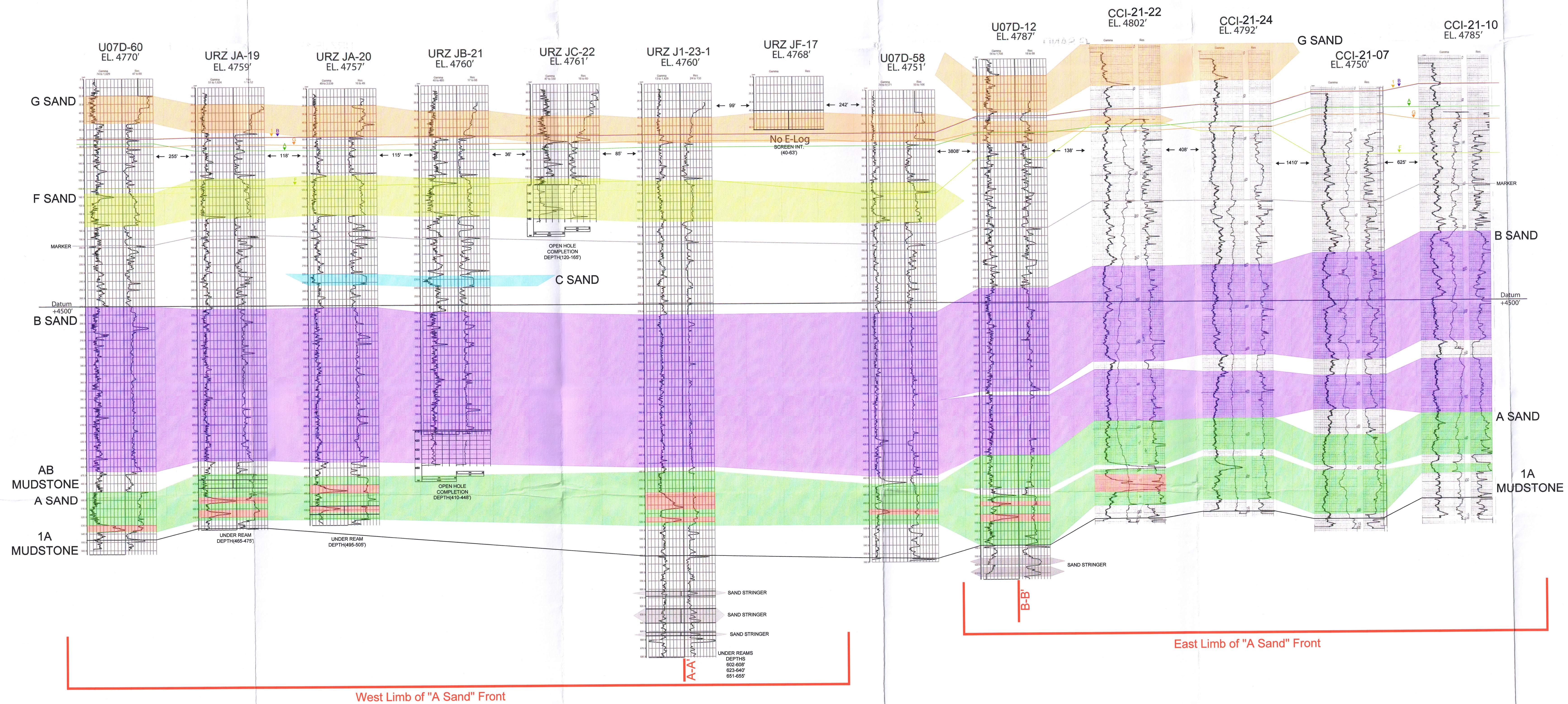
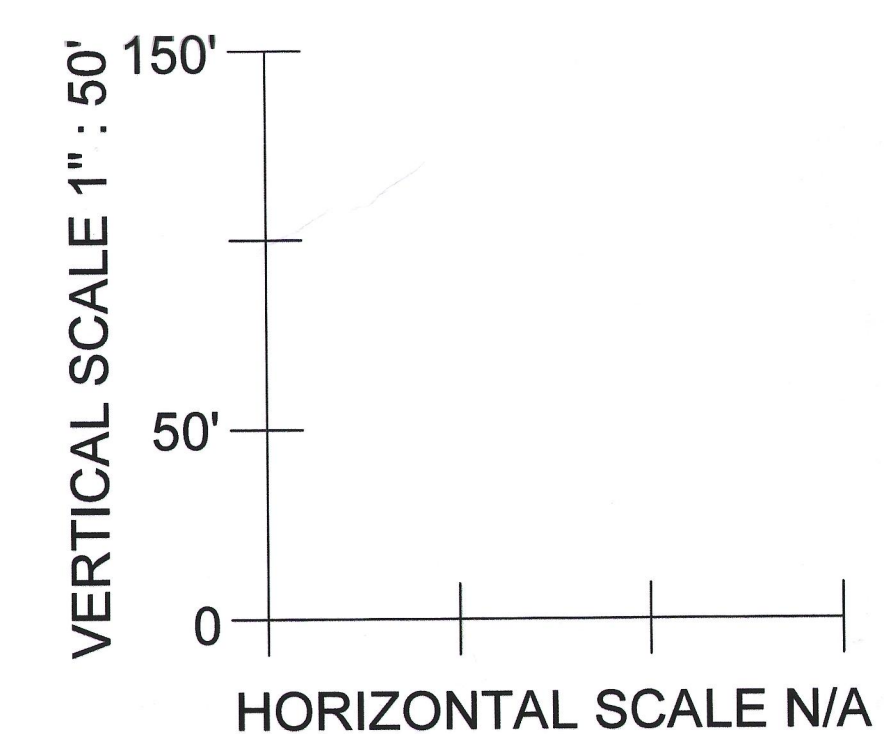


F
WEST

F'
EAST



TIE LOG TO CROSS SECTION
URANIUM ORE / MINERALIZATION
PIEZOMETRIC WATER LEVEL (per appropriate sand)
Note: Water-level elevations that are below base of the corresponding sand indicate the sand is dry.



Uranerz
ENERGY CORPORATION
1701 EAST "E" STREET P.O. BOX 50860
CASPER, WYOMING, USA 82605-0860
PHONE 307.255.8800 FAX 307.255.8804

NICHOLS RANCH ISR PROJECT
EXHIBIT JD-D5-6
JANE DOUGH UNIT EAST-WEST
CROSS SECTION F-F'

BY: LS / DT DATE: 10-31-2013
REV. #: 00 REV. DATE: 10-31-2013
SCALE: 1" = 50' SHEET: 1 OF 1
CONTOUR INTERVAL: N/A
FILE LOCATION: T:\IT\Drafting\CROSS SECTIONS TEMP FOLDER