






LEGEND

SURFACE RIGHT OWNERS

IBERLIN
STATE OF WYOMING
T-CHAIR LAND COMPANY
DRY FORK LAND & LIVESTOCK INC.
U.S FEDERAL GOVERNMENT

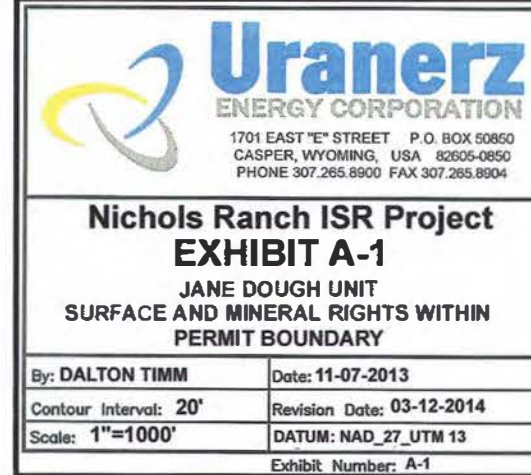
MINERAL RIGHT OWNERS

	PAX IRVINE ET.AL.
	PAX IRVINE
	POWER RESOURCES, INC.
	UNITED STATES FEDERAL GOVERNMENT
	NELROY ET.AL.

Document Path: T:\Drafting\GIS\Drawings\Jane Dough Exhibit A-1 (03-12-2014).mxd



DOI



A scale bar with markings at 0, 500, and 1,000 feet. The bar is divided into two equal segments, each representing 500 feet.