



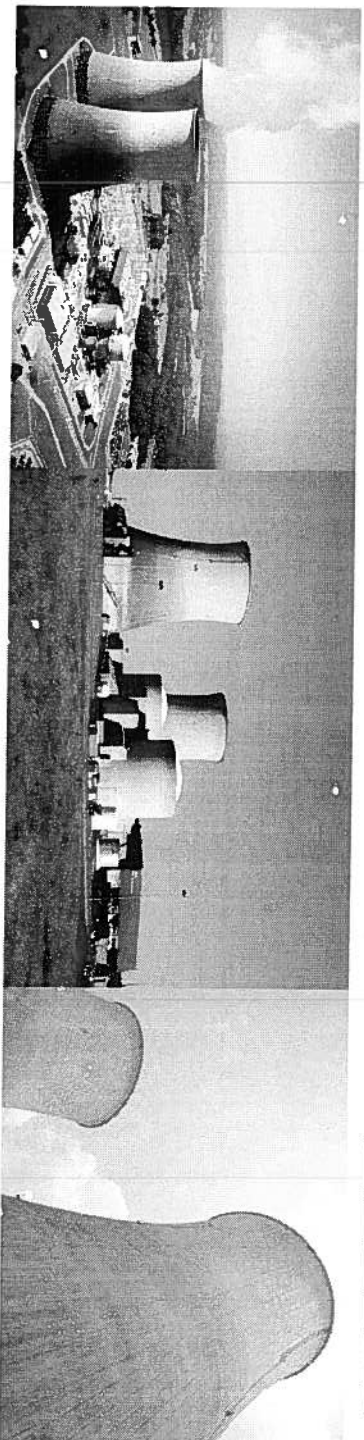
---

# **Watts Bar Nuclear Plant**

## **Reactivation Assessment Group (WRAG) Meeting**

April 9, 2014

---



# **IWA** Agenda

---

- Construction Completion Status
- Startup & Testing
- Licensing Path Forward
- Dual-Unit Operation
- Special Topics
  - Hydrology
  - Fukushima
  - Outreach
- Closing Comments



---

# Construction Completion Status Update

---



## **Watts Bar 2 Construction Reactivation**

---

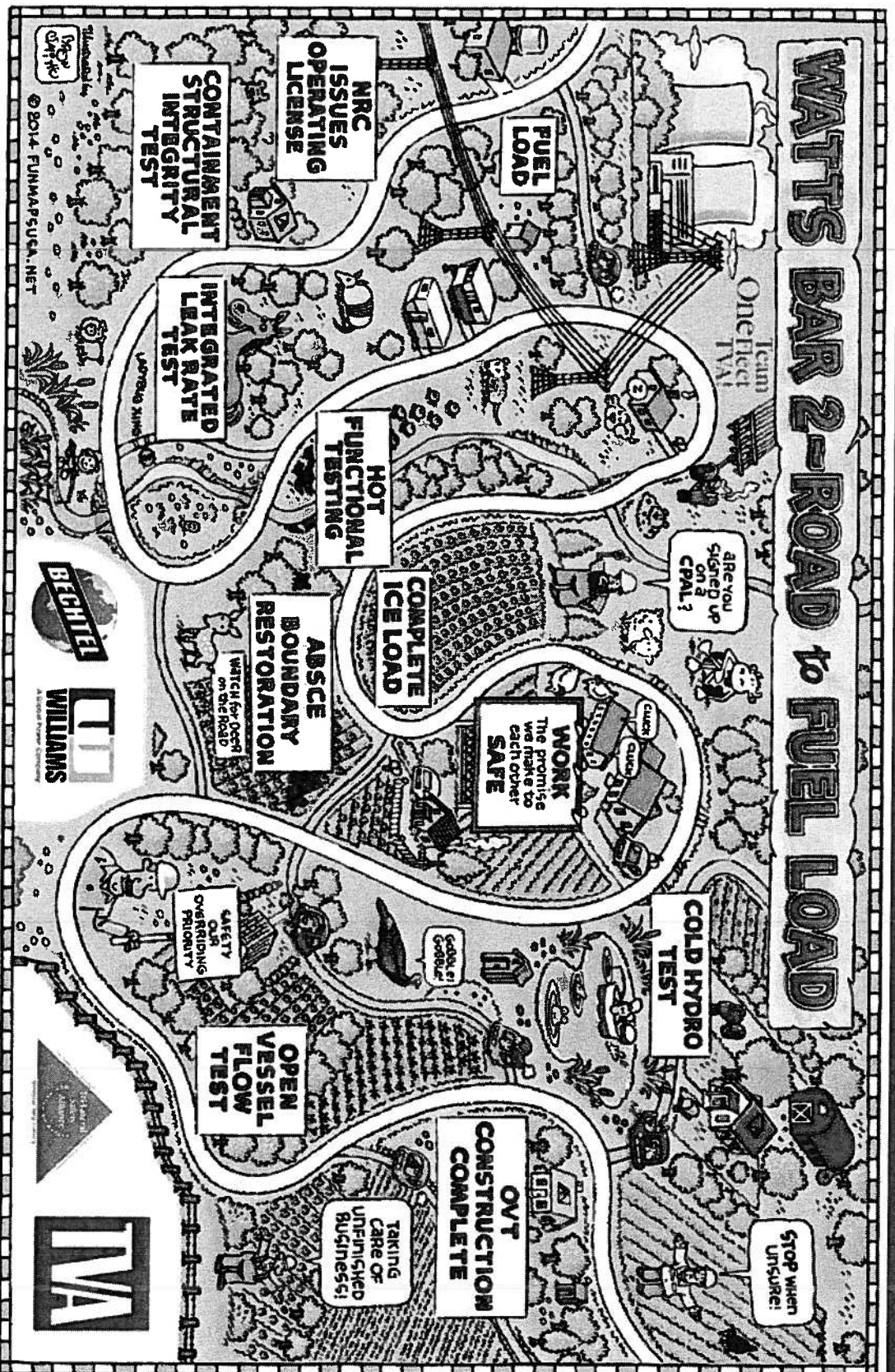
- Guiding Principles for Construction Completion
  - Ensuring public health and safety
  - Safe continued/uninterrupted operation of Watts Bar 1
  - Fidelity of the Unit 1 and Unit 2 Design Basis and physical operation
  - Maintaining a consistent, predictable, transparent process for completion and licensing

## **IVA Watts Bar 2 Construction Summary**

---

- Safety
  - Over 26+ million hours without lost-time incident
  - Fiscal year-to-date Recordable Injury Rate at 0.21
- Quality
  - Project Quality Control Acceptance Rate >96%
- Cost & schedule
  - Cost and schedule adherence meeting expectations

# IWA Watts Bar 2 Completion





# Startup & Testing



## **Watts Bar 2 Startup & Testing - Overview**

---

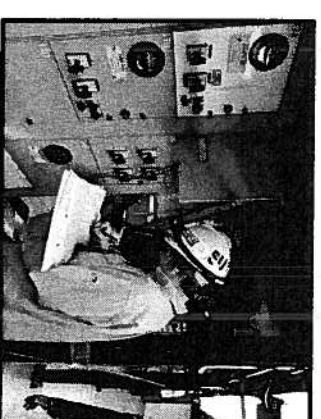
- Activities in progress
  - Component-level testing
  - System flushes
  - Pre-Op and acceptance testing
  - System turnovers



# **Watts Bar 2 Startup & Testing - Overview**

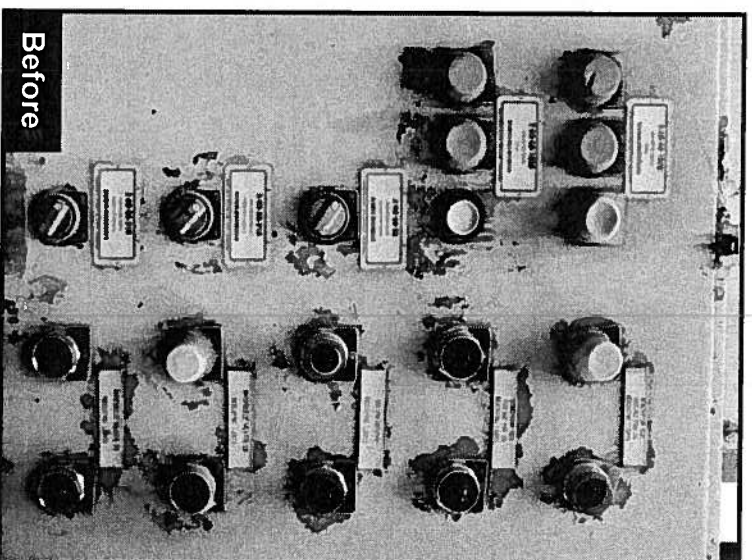
---

- Component-level testing
  - Current count is 8,634 component tests, 48% complete
- System flushing
  - Total number of clean plans – 68
  - Seven completed, six in progress
- Pre-operational and acceptance test performance
  - Overall test instruction generation – 81% complete
  - 41 of 87 systems turned over for pre-operational testing
  - Test instruction performance – on schedule
  - Startup testing – Nuclear Regulatory Commission (NRC) Region II interface



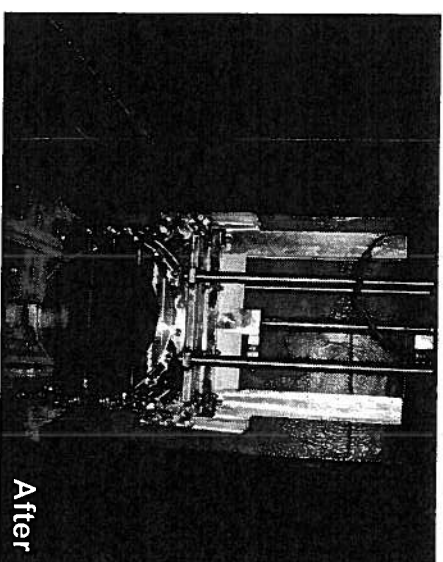
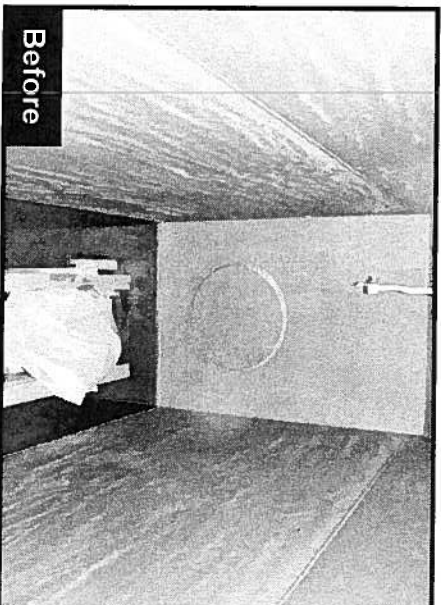
# Watts Bar 2 Components Before and After

Local Control Panel

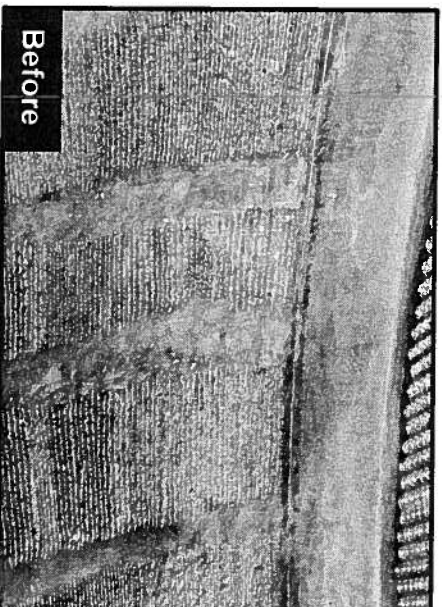


## **IVA Watts Bar 2 Components Before and After**

---



**Fuel Transfer Tube**



**Steam Generator Channel Head**



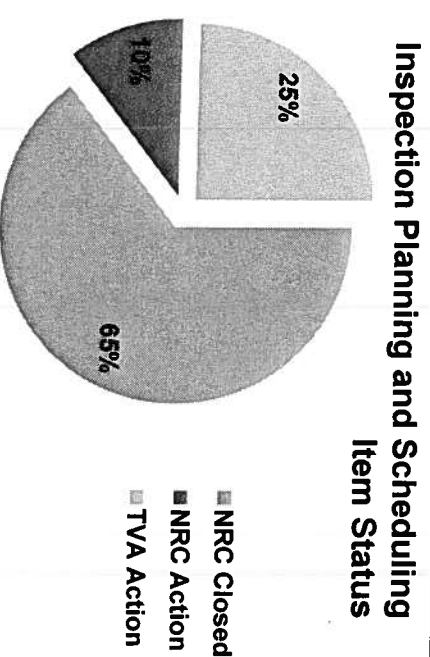
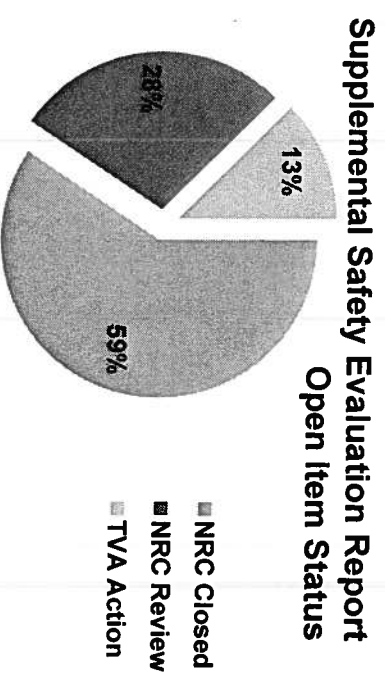
---

# Licensing Path Forward

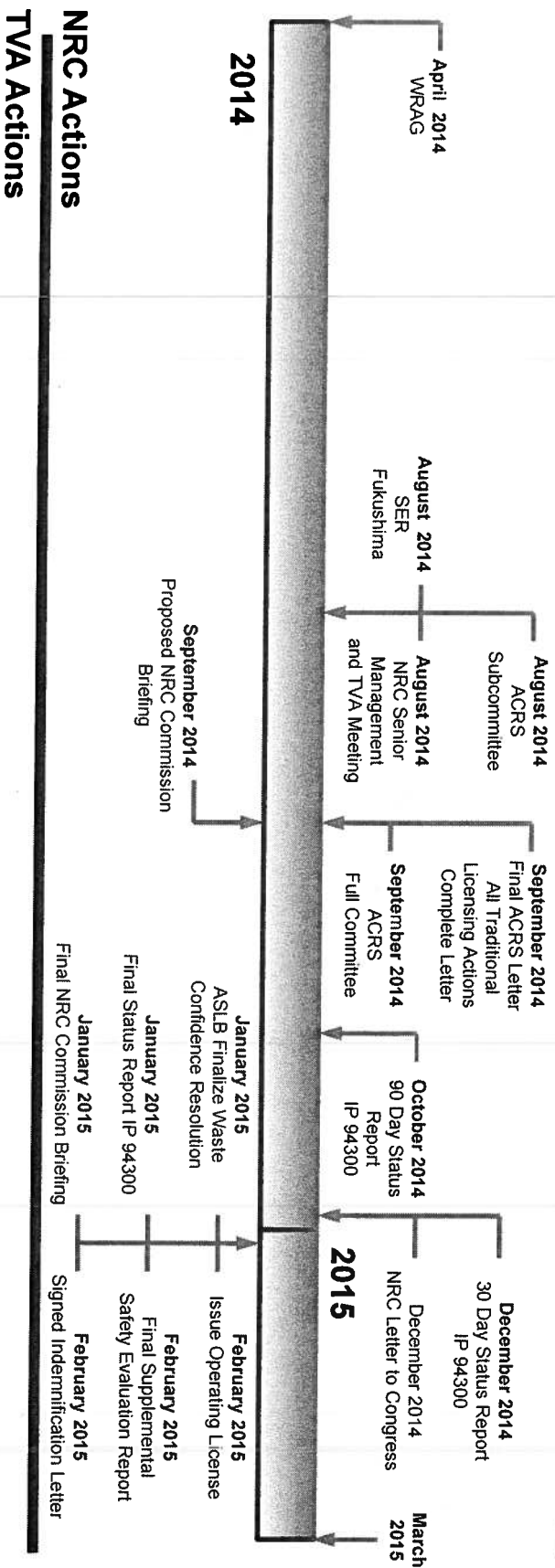
---

## **TVA Watts Bar 2 Licensing Path Forward**

- Final environmental statement is complete
- Safety evaluation nearing completion
- Closure of regulatory commitments accelerating
- No Watts Bar 2 specific contentions remain open



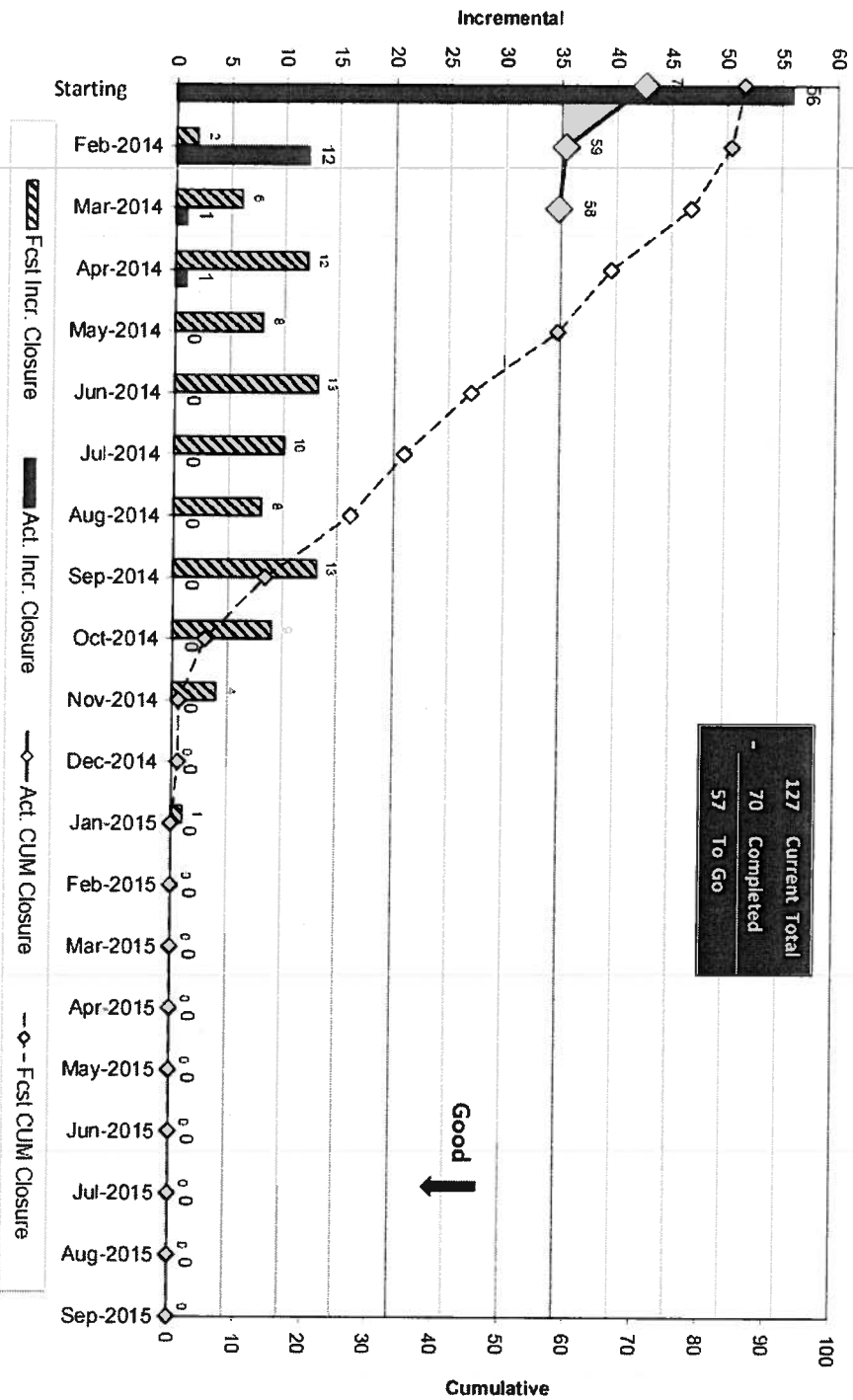
# **Watts Bar 2 Licensing Fuel Load Schedule**





# Watts Bar 2 Inspection Planning & Scheduling

Watts Bar Nuclear Unit 2 Completion Project  
Critical NRC Inspections - NRC Notified IPS Item Is Ready for Inspection  
Actual vs. Forecast





---

# Dual-Unit Operation

---



## **Watts Bar Dual-Unit Operation - Readiness Team**

---

- Governance and coordination role
  - Prepare organizational transition plans
  - Provide operational readiness self-assessment oversight
  - Ensure every process, program, and procedure has owner and schedule for completion that supports the project schedule
  - Coordinate and oversee system and area turnover
  - Coordinate resolution of issues/items between Watts Bar 1 operations and Watts Bar 2 completions
  - Power ascension testing

## **IMA Watts Bar Dual-Unit Operation - Readiness Team**

- Ensure Watts Bar's transition from safe, reliable single-unit operation to safe, reliable dual-unit operation





---

## Special Topics

---

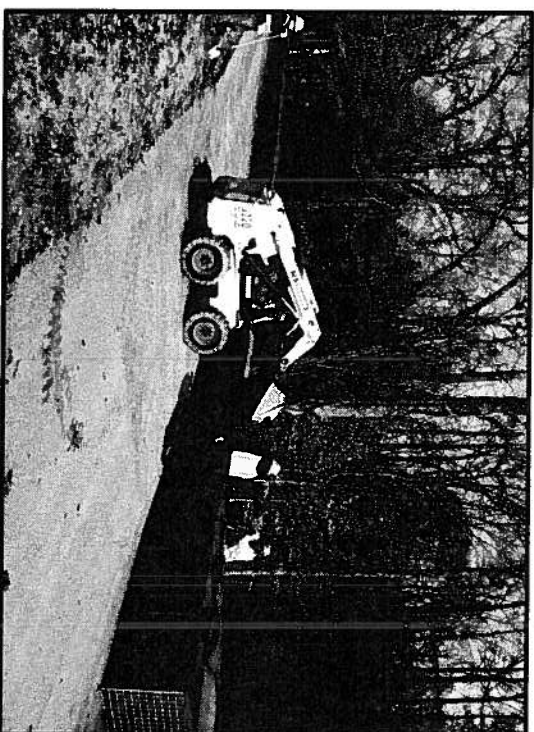
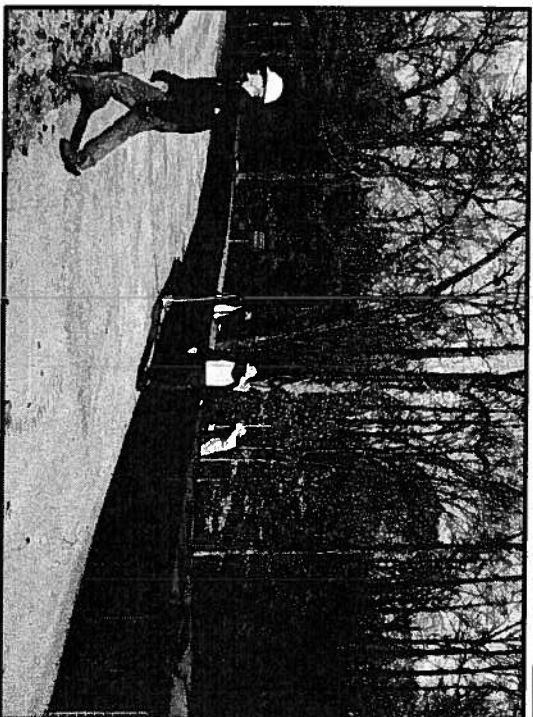
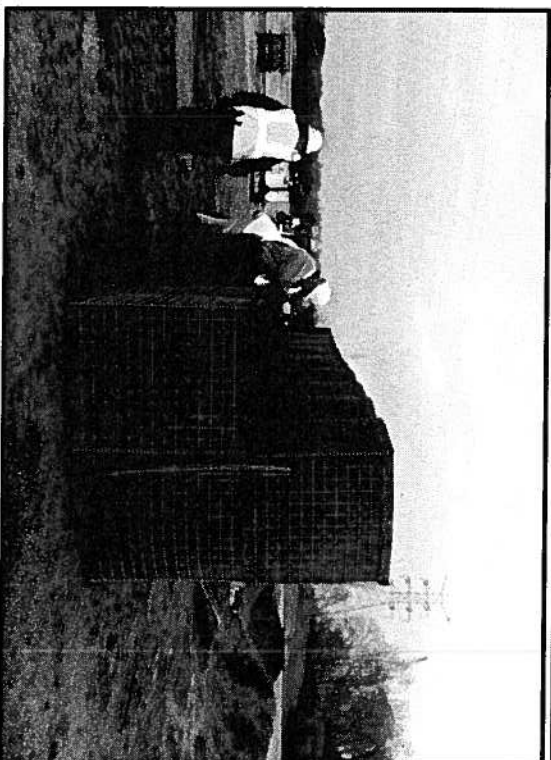
## TWA

- Williams**



# **IMA Flood Barrier (HESCO) Basket**

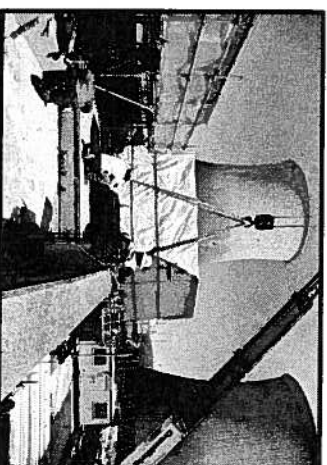
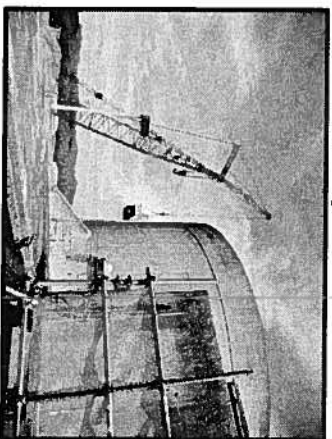
---



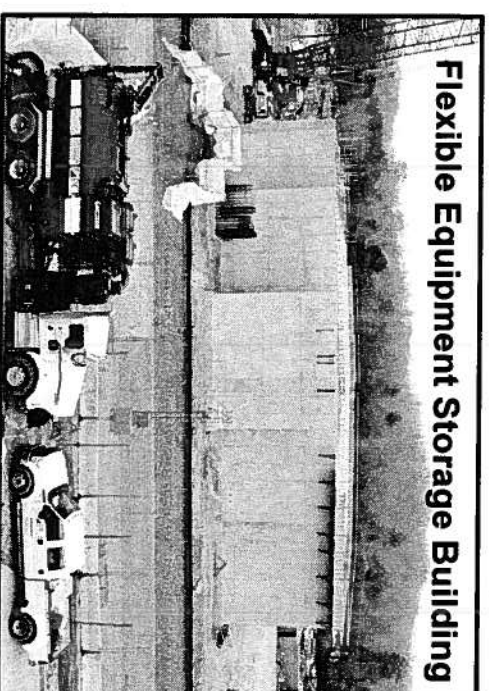
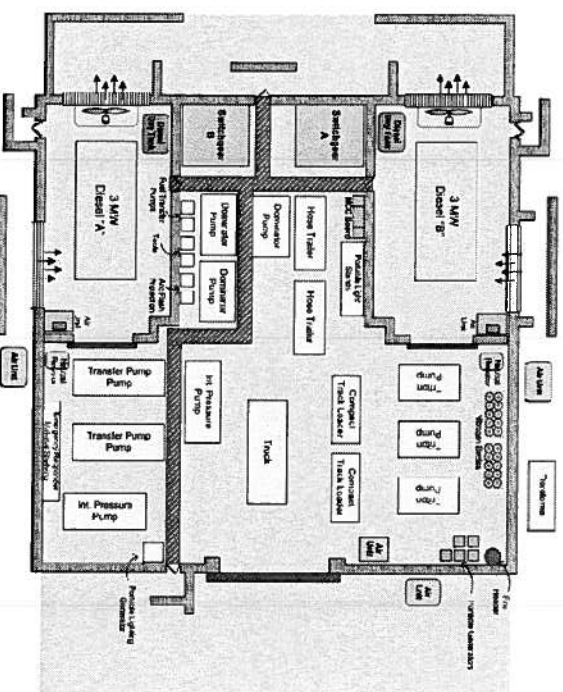
Williams

# Watts Bar Fukushima Response

- Designs for Fukushima modifications complete
- Construction of Flexible Equipment Storage Building underway
- Support equipment delivered
- NRC review in progress
- Procedures and training in development



**Diesel Generators Being Placed on Auxiliary Building Roof**

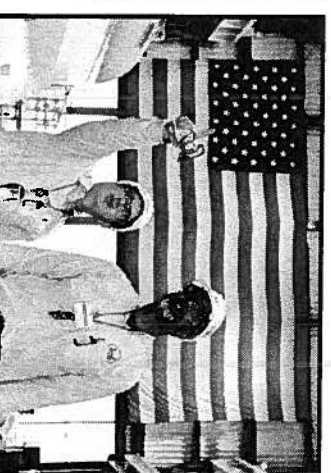


# **TVA Outreach Key Objectives**

- Visits/tours by key stakeholders
  - Commissioners with the NRC
  - Clean and Safe Energy Coalition
  - Nuclear Energy Institute's Washington International Representative Committee
  - Customers
- Speeches
- Community panel
- Public meetings
- Proactive media strategy
- Family & Friends, TVA, and Community Days



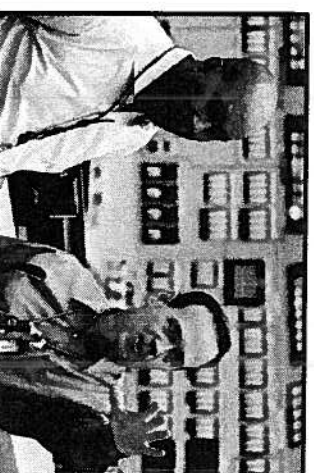
Commissioner Magwood



Commissioner Ostendorf



Ambassador Kirk





---

## Closing Remarks

---





## Conclusion

---

- Workers continue to deliver good safety performance.
- Quality work remains high as measured by the Quality Control Acceptance Rate.
- Cost and schedule performance are slightly ahead of the Watts Bar 2 Estimate to Complete values.
- Startup testing and system turnovers are in progress.
- Project challenges are being identified and addressed to ensure project impacts are minimized.
- Fukushima response and hydrology actions continue to progress in support of the operating license schedule.
- A comprehensive outreach plan is being implemented.



# Questions