

100-JAN-502

**REVISIONS**

A) AS BUILT-  
INCORPORATE  
DWS INTO THE SYS  
PER NDR NO. 145  
DWN: BAB 1-17-83  
CHK: 11-17-83  
FILMED: 1-17-83

B) AS BUILT  
ADDED DRAIN PORT  
IN SHIELDING PLUG  
PER DRR NO. 84-267  
DWN: 11-21-84  
CHKD: 11-21-84  
ENR: 11-21-84  
RPE: 11-21-84  
DC: 11-21-84  
FILMED: 1-14-85

C) AS BUILT  
ADDED LIFTING LUG  
UPGRADES THAT  
ARE REQUIRED FOR  
MEETING HEAVY  
LOAD SAFETY  
FACTORS PER DRR\*  
NO. 85-19  
DWN: 1-22-85  
CHKD: 1-22-85  
MOD: 1-22-85  
FILMED: 2-6-85

UNLESS OTHERWISE SPECIFIED USE THE FOLLOWING:

APPLIED PRACTICES	SURFACES	TOLERANCES	FINISHES	WELDS
✓	✓	✓	✓	✓

GENERAL ELECTRIC 205-NSP-001

**SHIELDING PLUG**

FIRST MADE FOR: MONTICELLO

**MATERIALS LIST FOR ONE PLUG**

NO.	SHAPE	LENGTH	MARK	REMARKS
2	R	1/4" x 17 1/2" DIA	P1	
4	R	1/4" x 30" x 17 1/2" DIA (17 1/2" DIA.)	P2	
4	R	1/4" x 8 1/2" x 15 1/2"	P3	
4	BAR	2" x 6" x 31"	P4	
8	R	1/4" x 5" x 8"	P5	
8	R	1/4" x 5" x 15 1/2"	P6	
6	V	4" x 13" x 30"	V1	
4	R	1/4" x 7 1/2" x 14 1/2"	P7	
4	R	1/2" x 4 1/4" x 7 1/2"	P8	
2	R	1/2" x 8" x 7 1/2"	P9	
1	R	1/2" x 6 1/4" x 6 1/4"	P10	1 CUTS 2
1	NELSON STUD	3/4" x 3"	N1	
1	BAR	1/2" x 4" x 17"	P6	

**NOTES:**

1. WELD N1 AS SHOWN ON 18" CENTER TO CENTER BOTTOM PLATE ONLY

2. SUPPLY C-CUTS (2" x 2" x 10") FOR FIELD WELD AFTER CONC. FILL.

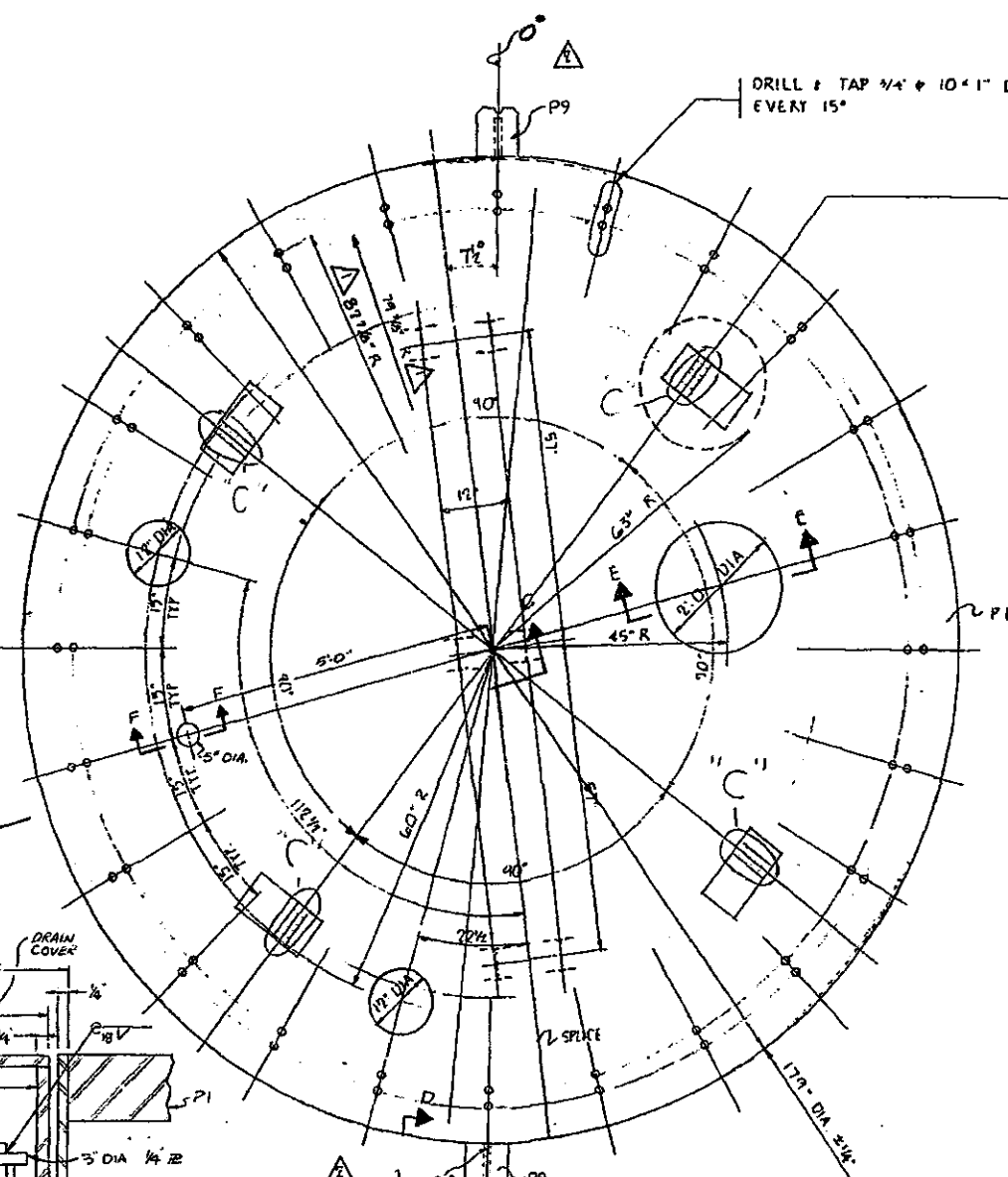
3. FILL PLUG W/ CONC. AFTER FIELD ASM.

**CONCRETE SPEC'S**

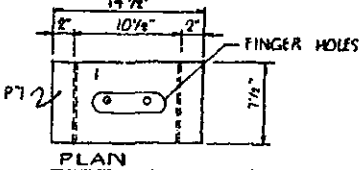
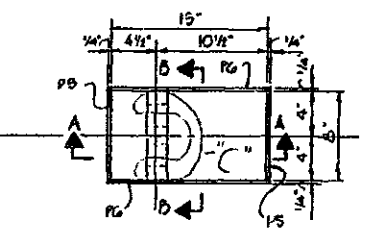
a) 3500 PSI COMPRESSIVE

b) DENSITY = 170 #/cu ft. 120 #/cu ft.

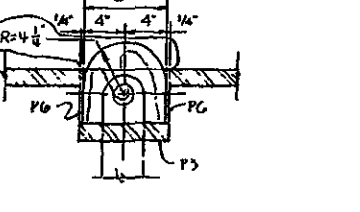
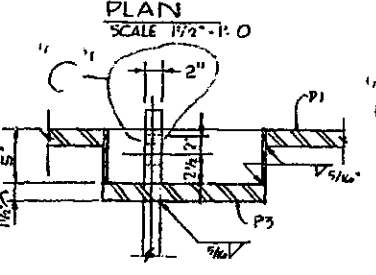
c) HIGH-EARLY CEMENT PROHIBITED



**PLAN OF SHIELDING PLUG**  
SCALE 3/4" = 1'-0"

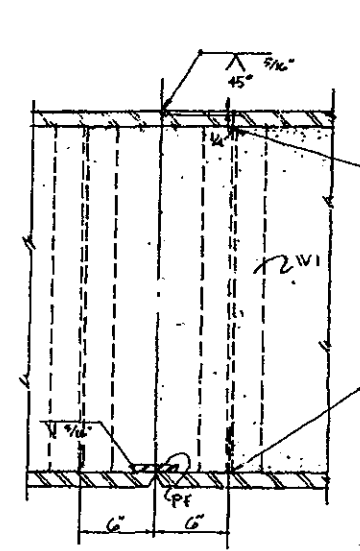
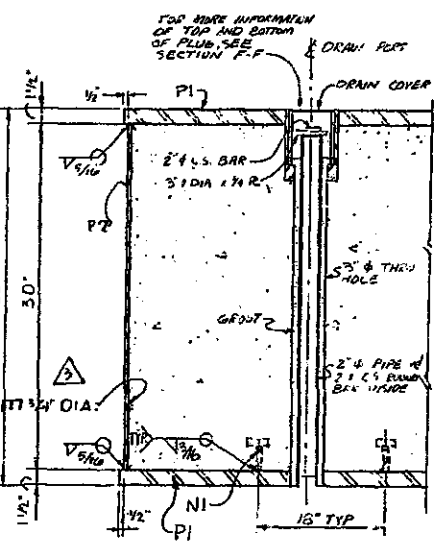
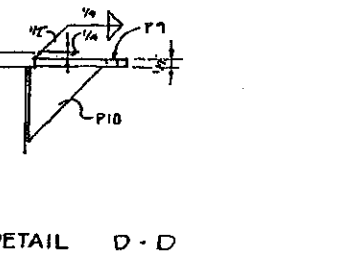
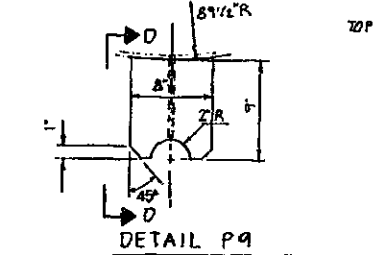


**SHACKLE BOX COVER**



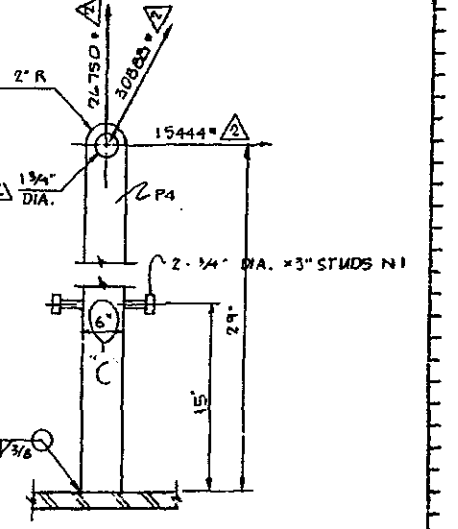
**SECTION A-A**  
SCALE 1/2" = 1'-0"

**SECTION B-B**  
SCALE 1/2" = 1'-0"



**SECTION C-C**  
SCALE 1/2" = 1'-0"

**SECTION C-C**  
SCALE 1/2" = 1'-0"



**LIFT LUG**  
SCALE 1/2" = 1'-0"

NOTE: USE IT TON SHACKLE (CROSSY OR EQUAL) 1 1/8" DIA. PIN.

NX-8290-159 REV. C

**REVISIONS**

NO.	DESCRIPTION	DATE	BY	CHKD.
1	REV. B	8-23-77		
2	REV. C	8-26-77		
3	REV. D	9-1-77		